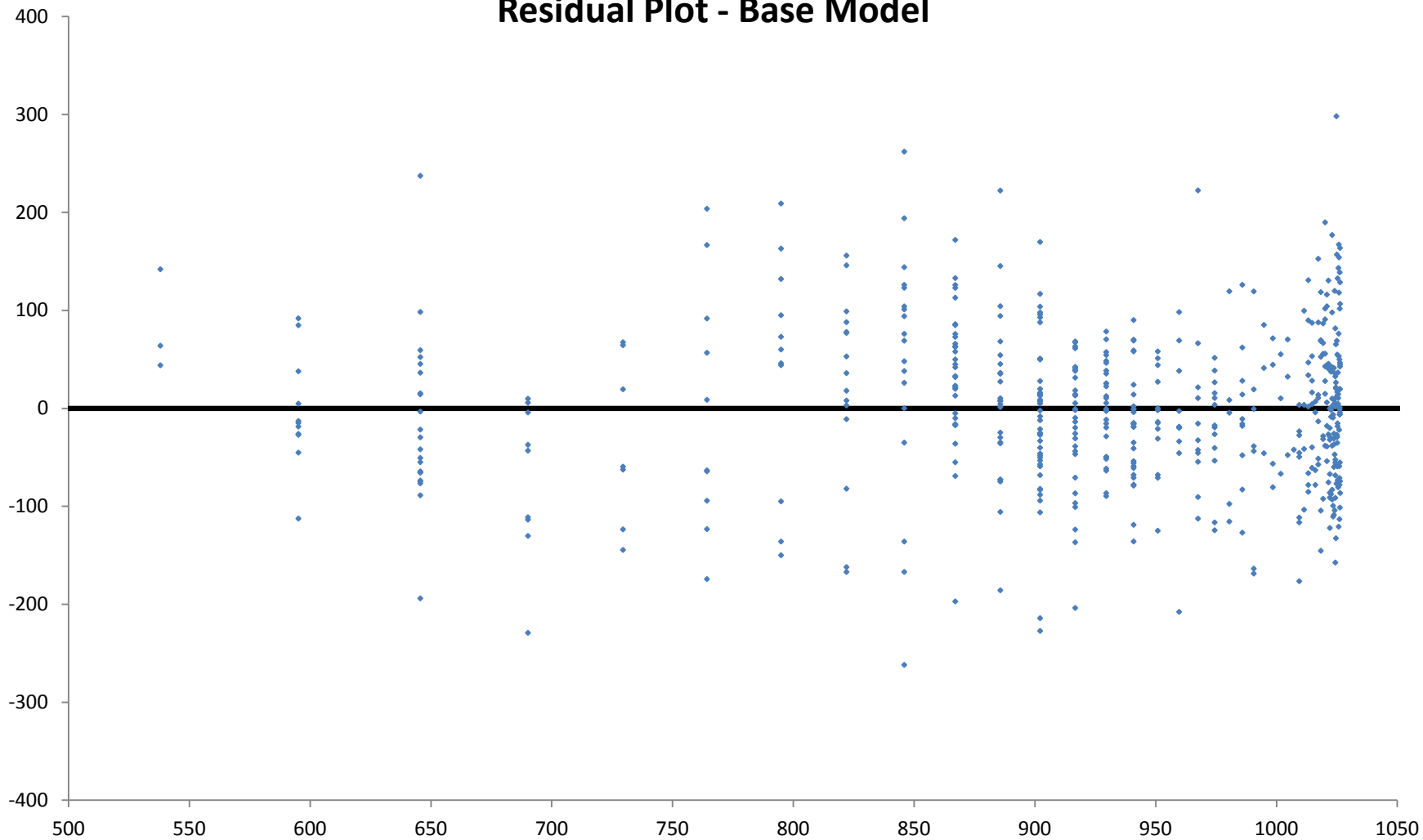
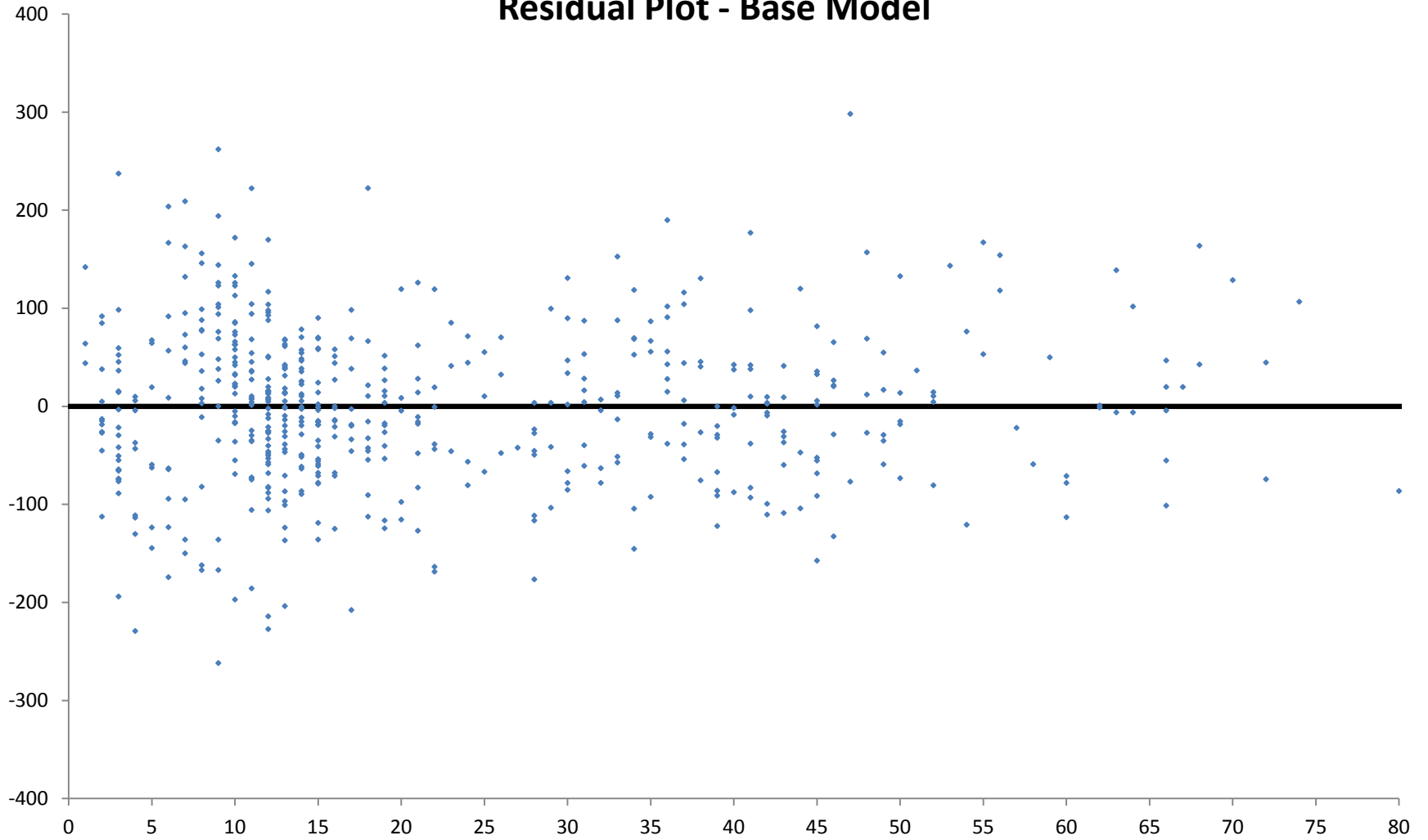


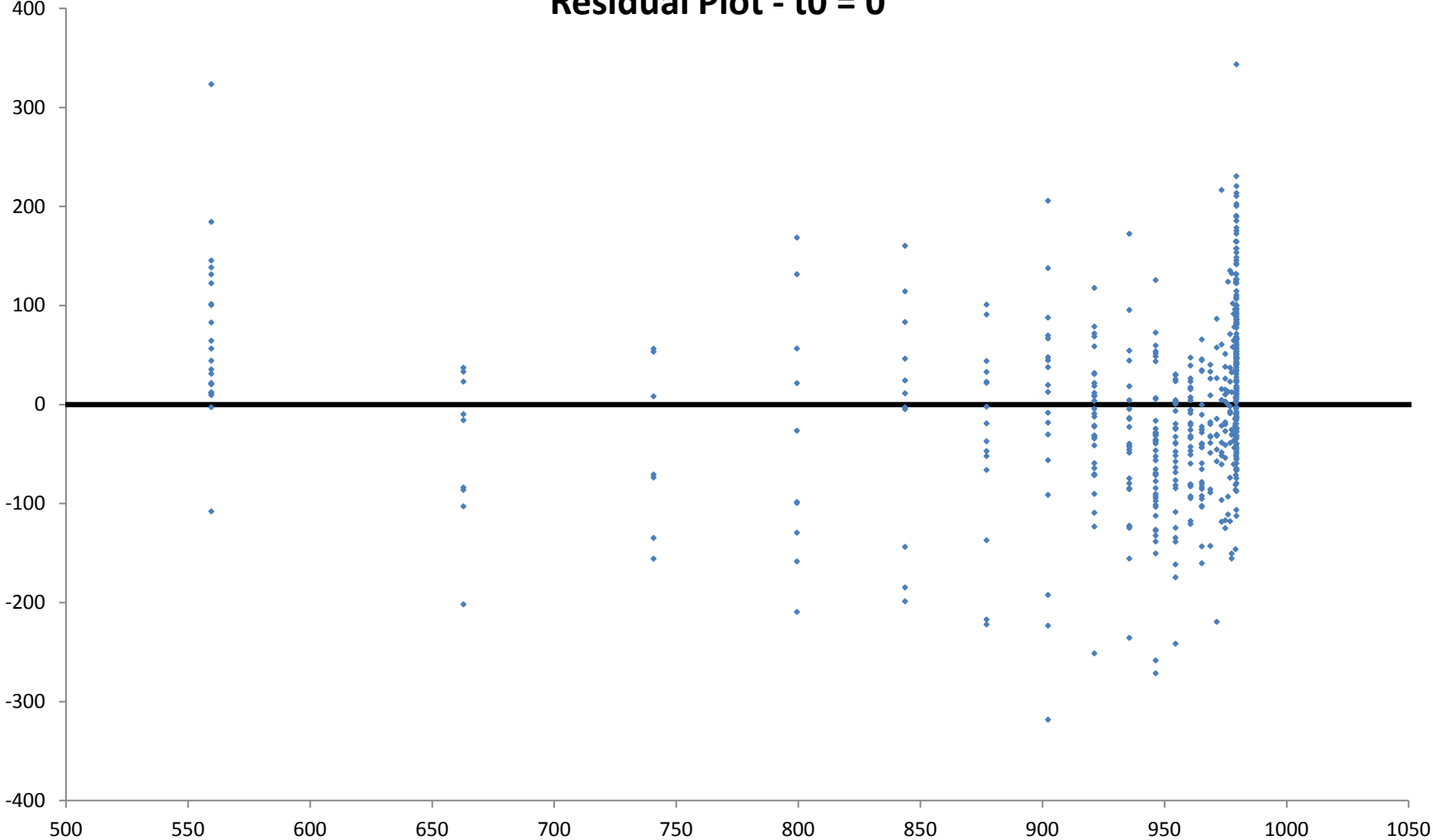
# Residual Plot - Base Model



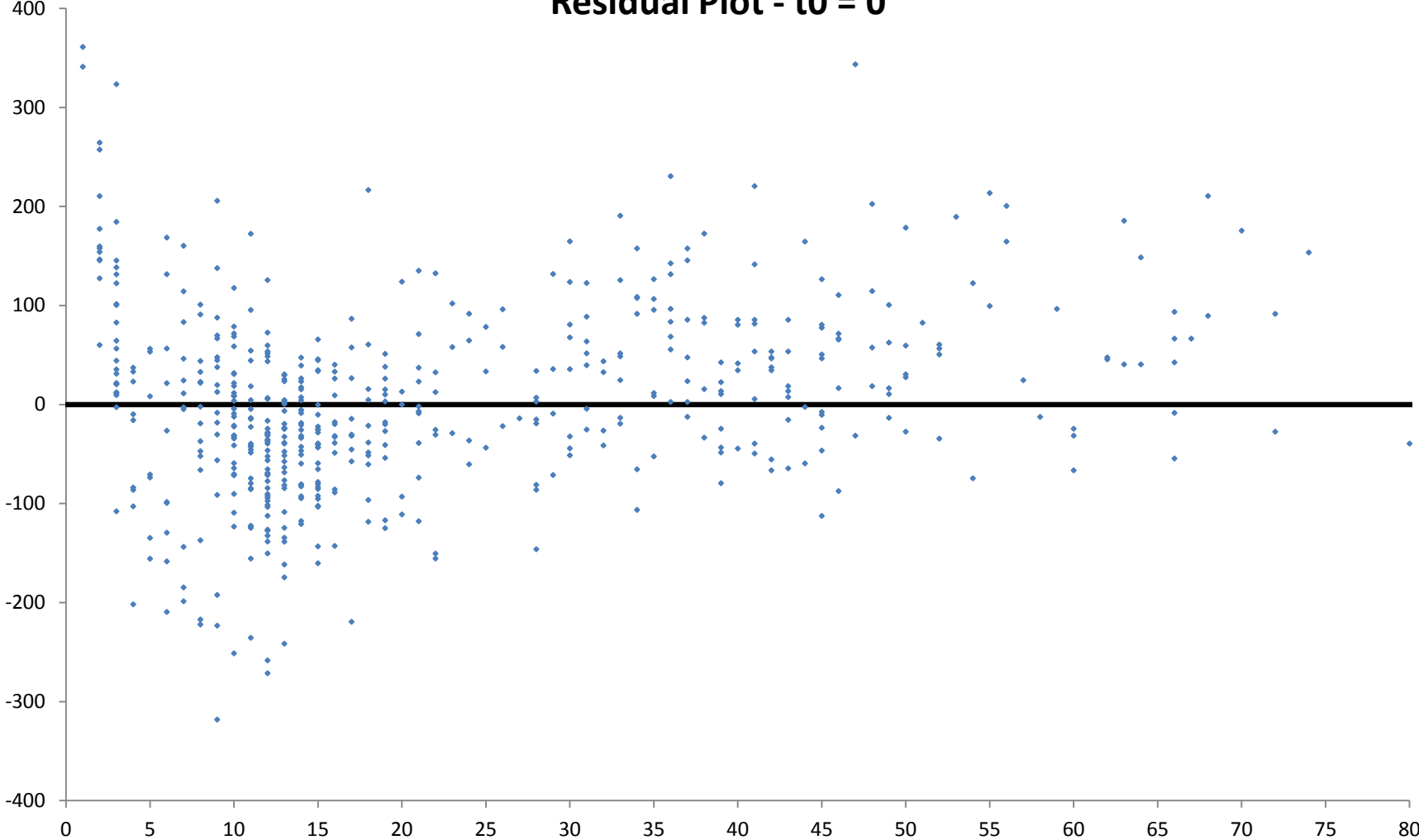
# Residual Plot - Base Model



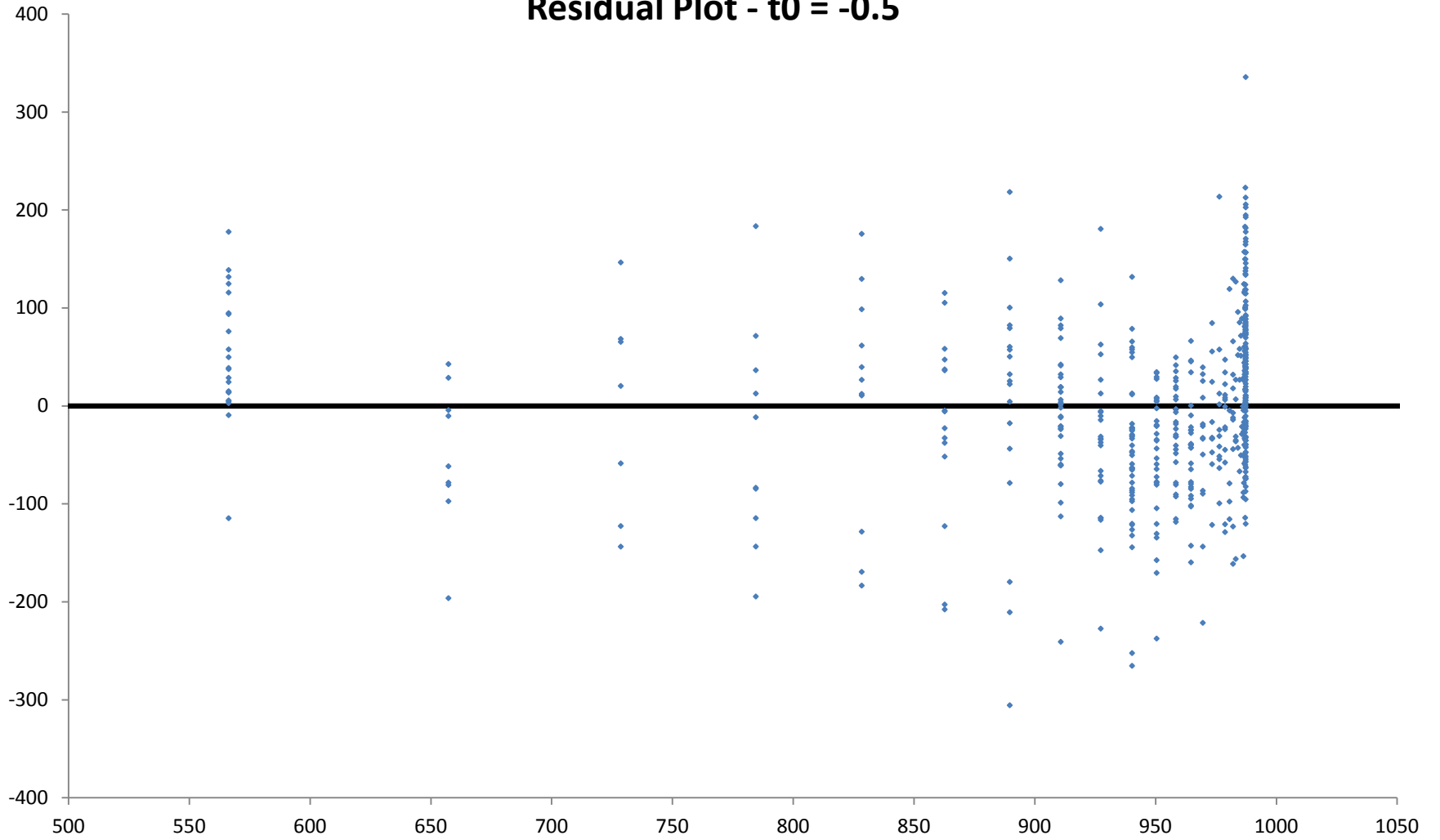
# Residual Plot - $t_0 = 0$



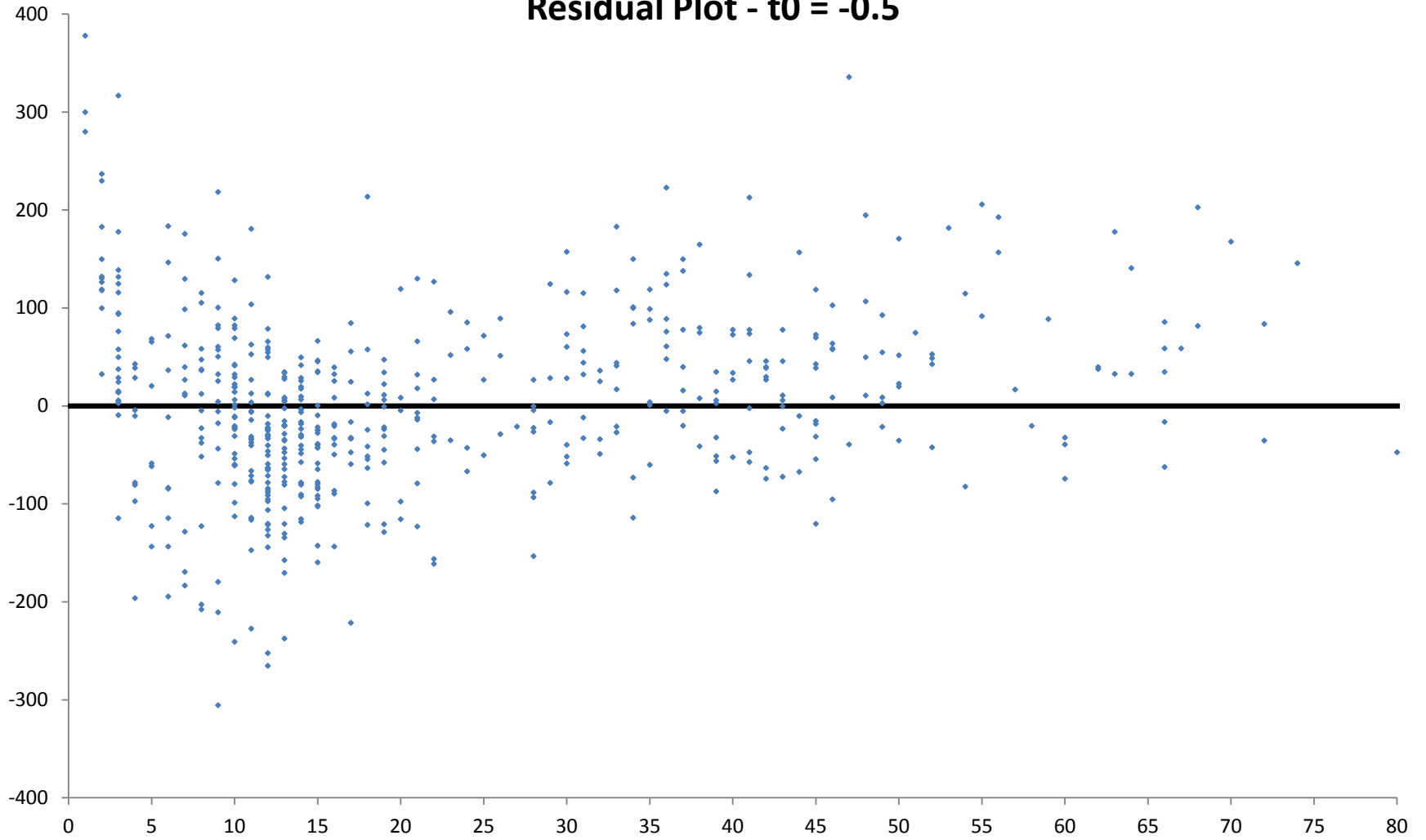
# Residual Plot - $t_0 = 0$



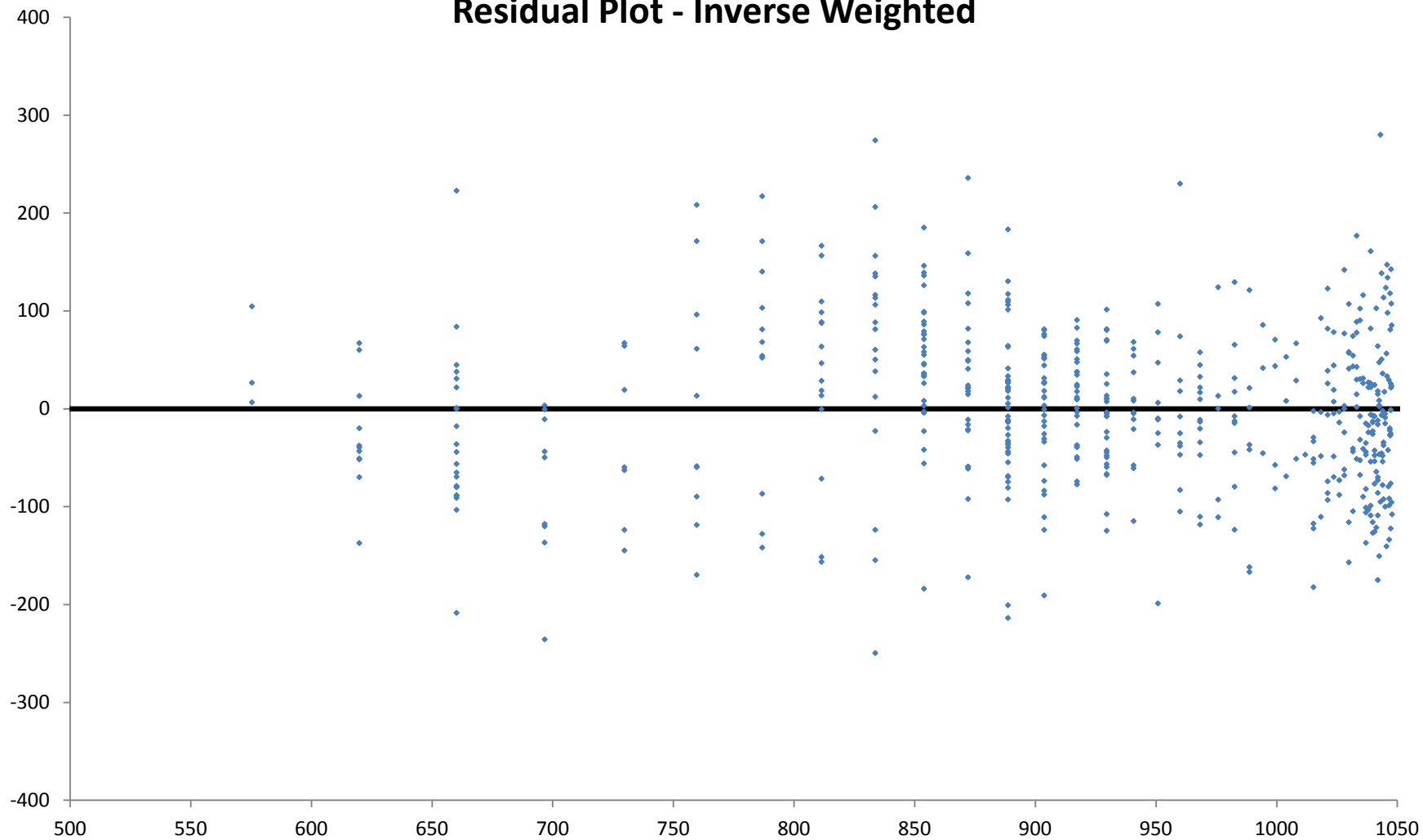
**Residual Plot -  $t_0 = -0.5$**



**Residual Plot -  $t_0 = -0.5$**



# Residual Plot - Inverse Weighted





# Residual Plot - Inverse Weighted

