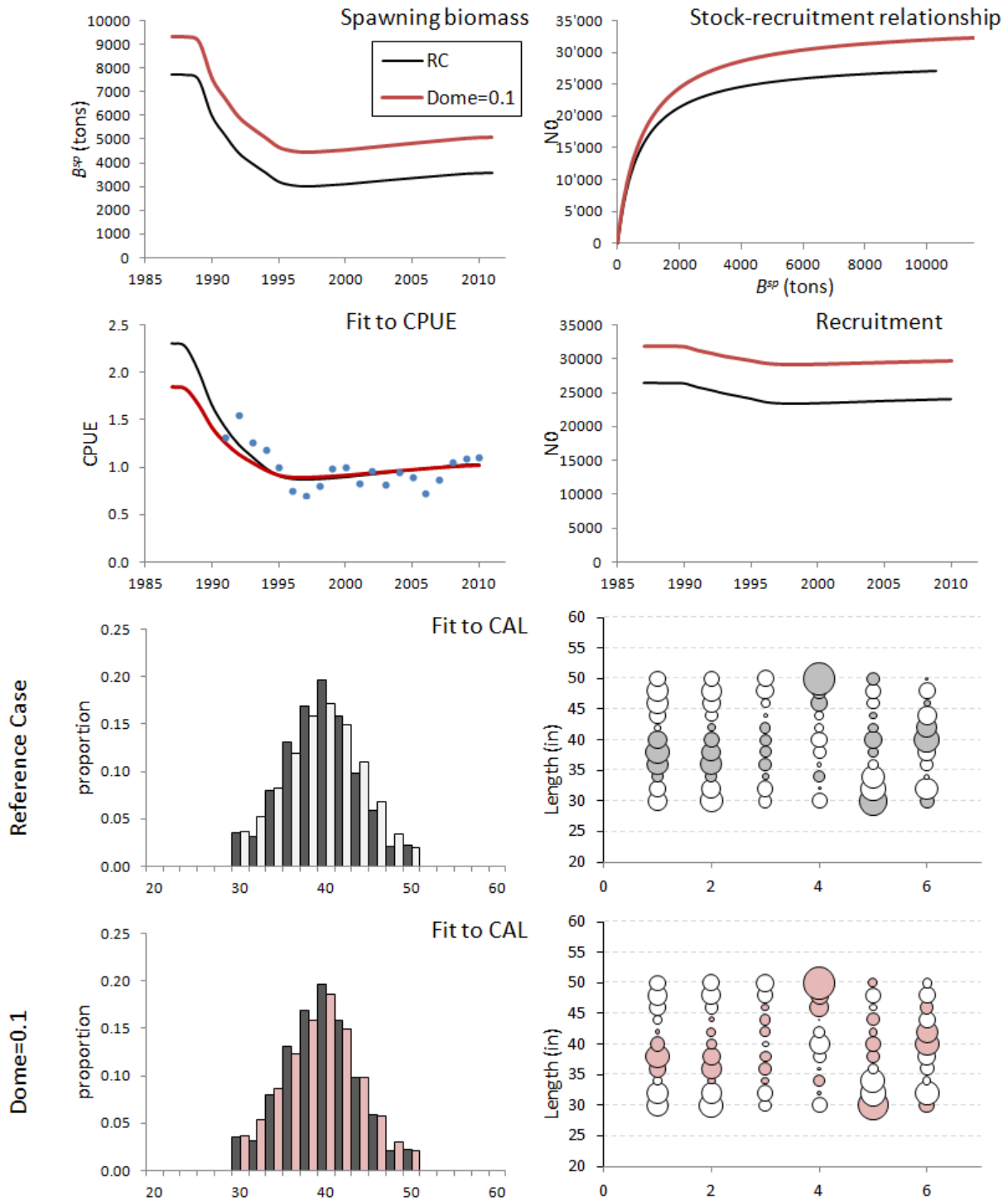


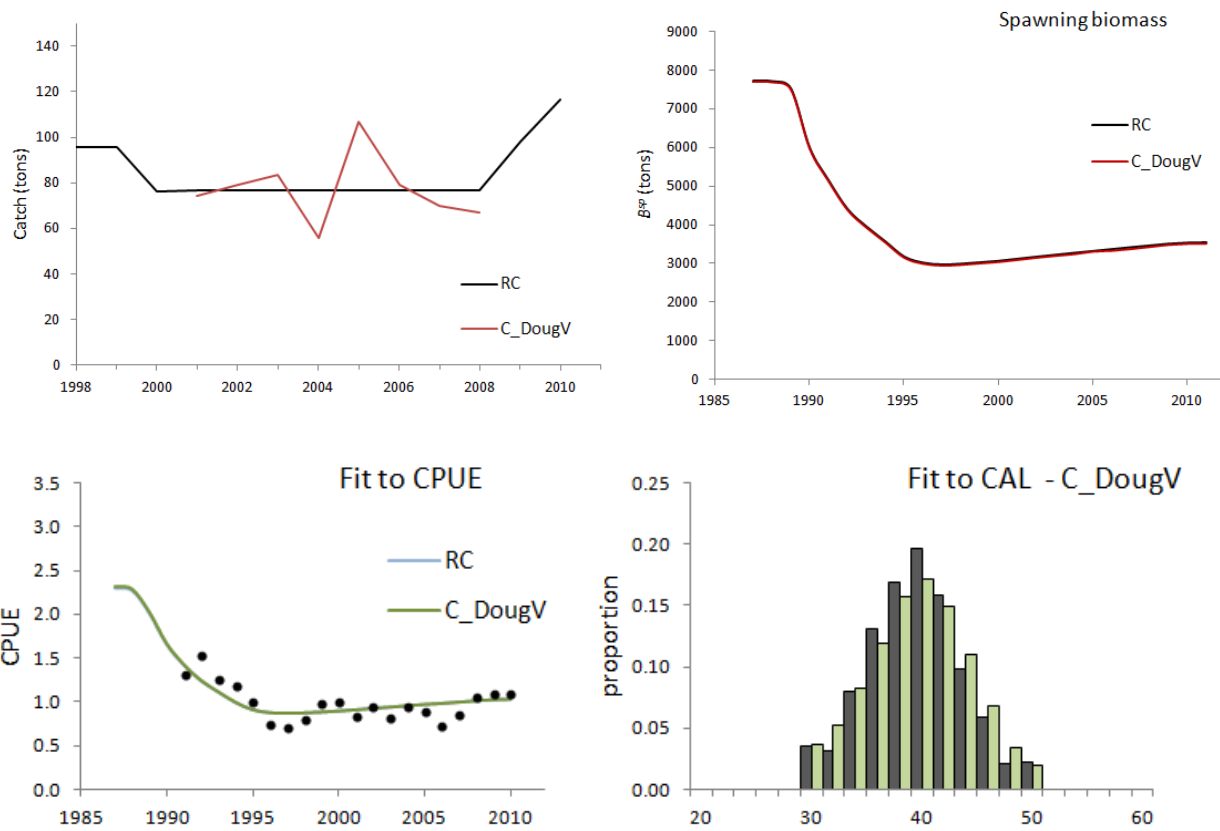
REFERENCE CASE VS DOME=0.1



Hessian CVs in parenthesis

Run	RC		Dome0.1	
¹ -lnL:overall	-67.8		-71.4	
¹ -lnL:CPUE	-30.4		-27.9	
¹ -lnL:CAL	-37.5		-43.5	
¹ -lnL:RecRes	-		-	
<i>h</i>	0.75	-	0.75	-
<i>M</i>	0.04	-	0.04	-
γ	1	-	1	-
θ	1	-	1	-
ξ	0	-	0	-
K^{sp} (tons)	7725	(0.11)	9302	(0.20)
B^{sp}_{2010} (tons)	3550	(0.25)	5053	(0.37)
B^{sp}_{2010}/K^{sp}	0.46	(0.13)	0.54	(0.17)
$MSYL^{sp}$	0.26	(0.03)	0.25	(0.02)
B^{sp}_{MSY} (tons)	2020	(0.09)	2331	(0.19)
$B^{sp}_{2010}/B^{sp}_{MSY}$	1.76	(0.16)	2.17	(0.17)
MSY (tons)	144	(0.10)	173	(0.19)
F_{MSY}	0.08	-	0.07	-
F_{2010}	0.03	(0.26)	0.02	(0.36)
σ_{com}	0.13	(0.06)	0.15	(0.09)
σ_{len}	0.09	(0.02)	0.08	(0.03)
Dome	0.0	-	0.10	-

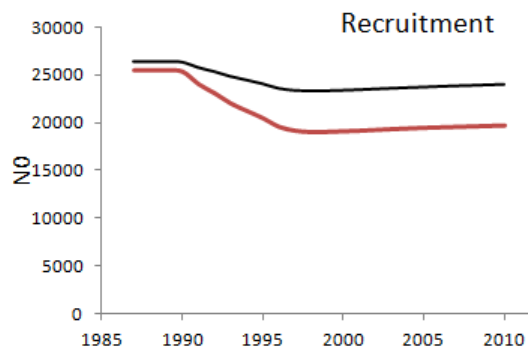
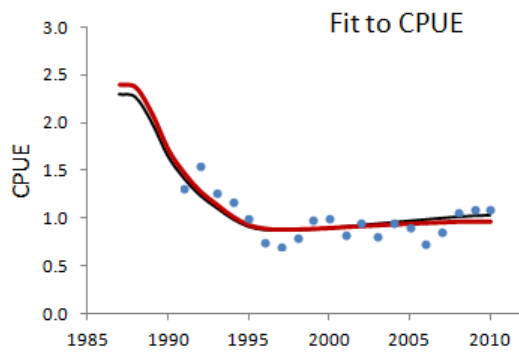
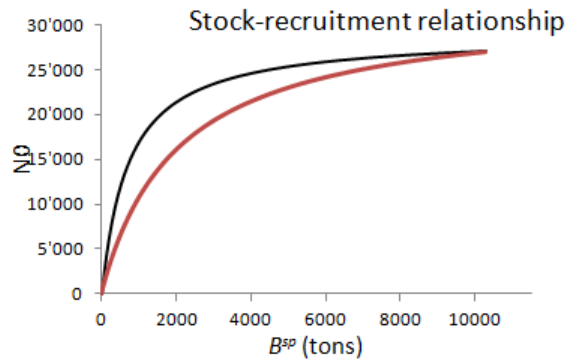
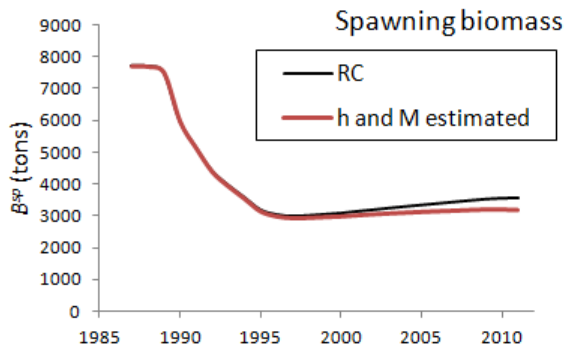
REFERENCE CASE VS DougV 2001-2008 catches



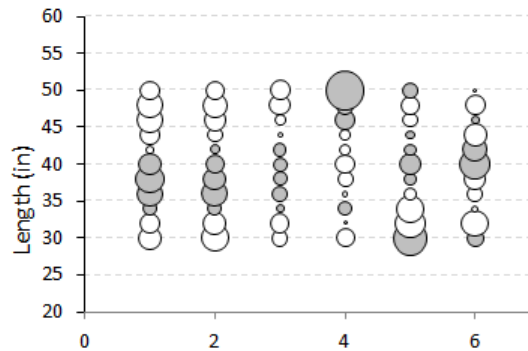
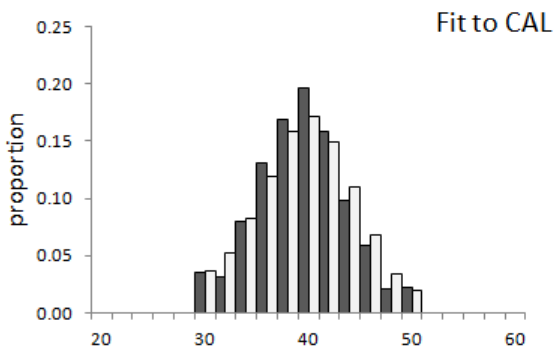
(Note: RC and C_DougV fit to CPUE: the lines are on top of each other)

	RC	CDougV
$^{-1}\ln L$:overall	-67.8	-67.9
$^{-1}\ln L$:CPUE	-30.4	-30.5
$^{-1}\ln L$:CAL	-37.5	-37.4
$^{-1}\ln L$:RecRes	-	-
γ	1	1
θ	1	1
ζ	0	0
K^{sp} (tons)	7725	7694
B^{sp}_{2010} (tons)	3550	3519
B^{sp}_{2010}/K^{sp}	0.46	0.46
$MSYL^{sp}$	0.26	0.26
B^{sp}_{MSY} (tons)	2020	2012
$B^{sp}_{2010}/B^{sp}_{MSY}$	1.76	1.75
MSY ('000 lb and tons)	317 (144)	316 (143)
F_{MSY}	0.08	0.08
F_{2010}	0.03	0.03
σ_{com}	0.13	0.13
σ_{len}	0.09	0.09

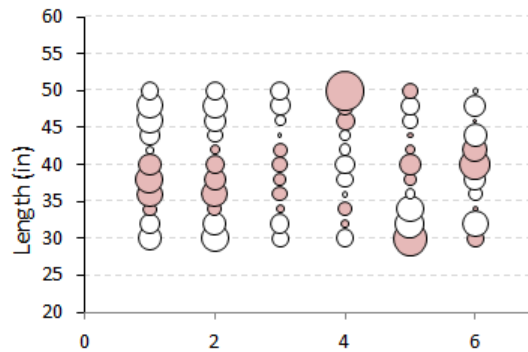
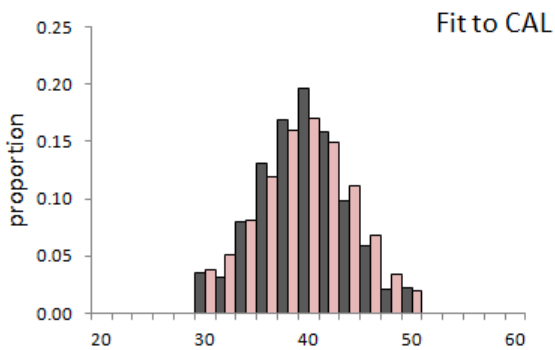
REFERENCE CASE VS h and M estimated



Reference Case



h and M estimated



Run	RC	<i>h</i> and <i>M</i> estimated		
'-lnL:overall	-67.8		-68.4	
'-lnL:CPUE	-30.4		-30.8	
'-lnL:CAL	-37.5		-37.7	
'-lnL:RecRes	-		-	
<i>h</i>	0.75	-	0.54579	(0.43)
<i>M</i>	0.04	-	0.0391	(0.21)
γ	1	-	1	-
θ	1	-	1	-
ξ	0	-	0	-
K^{sp} (tons)	7725	(0.11)	7698	(0.10)
B^{sp}_{2010} (tons)	3550	(0.25)	3187	(0.24)
B^{sp}_{2010}/K^{sp}	0.46	(0.13)	0.41	(0.15)
MSY^{sp}	0.26	(0.03)	0.34	(0.39)
B^{sp}_{MSY} (tons)	2020	(0.09)	2580	(0.37)
$B^{sp}_{2010}/B^{sp}_{MSY}$	1.76	(0.16)	1.24	(0.39)
MSY (tons)	144	(0.10)	99	(0.38)
F_{MSY}	0.08	-	0.04	-
F_{2010}	0.03	(0.26)	0.04	(0.25)
σ_{com}	0.13	(0.06)	0.13	(0.10)
σ_{len}	0.09	(0.02)	0.09	(0.04)
Dome	0.0	-	0.0	-

REFERENCE CASE VS CONSTANT SE ON AGE DISTRIBUTION

Run	RC	cteSE
'-lnL:overall	-67.8	-68.2
'-lnL:CPUE	-30.4	-29.2
'-lnL:CAL	-37.5	-39.0
'-lnL:RecRes	-	-
<i>h</i>	0.75 -	0.75 -
<i>M</i>	0.04 -	0.04 -
γ	1 -	1 -
θ	1 -	1 -
ζ	0 -	0 -
K^{sp} (tons)	7725 (0.11)	8124 (0.11)
B^{sp}_{2010} (tons)	3550 (0.25)	4078 (0.22)
B^{sp}_{2010}/K^{sp}	0.46 (0.13)	0.50 (0.11)
$MSYL^{sp}$	0.26 (0.03)	0.25 (0.00)
B^{sp}_{MSY} (tons)	2020 (0.09)	2041 (0.11)
$B^{sp}_{2010}/B^{sp}_{MSY}$	1.76 (0.16)	2.00 (0.11)
MSY (tons)	144 (0.10)	159 (0.10)
F_{MSY}	0.08 -	0.09 -
F_{2010}	0.03 (0.26)	0.03 (0.22)
σ_{com}	0.13 (0.06)	0.14 (0.05)
σ_{len}	0.09 (0.02)	0.08 (0.02)
Dome	0.0 -	0.0 -

