

Dolphin ABC

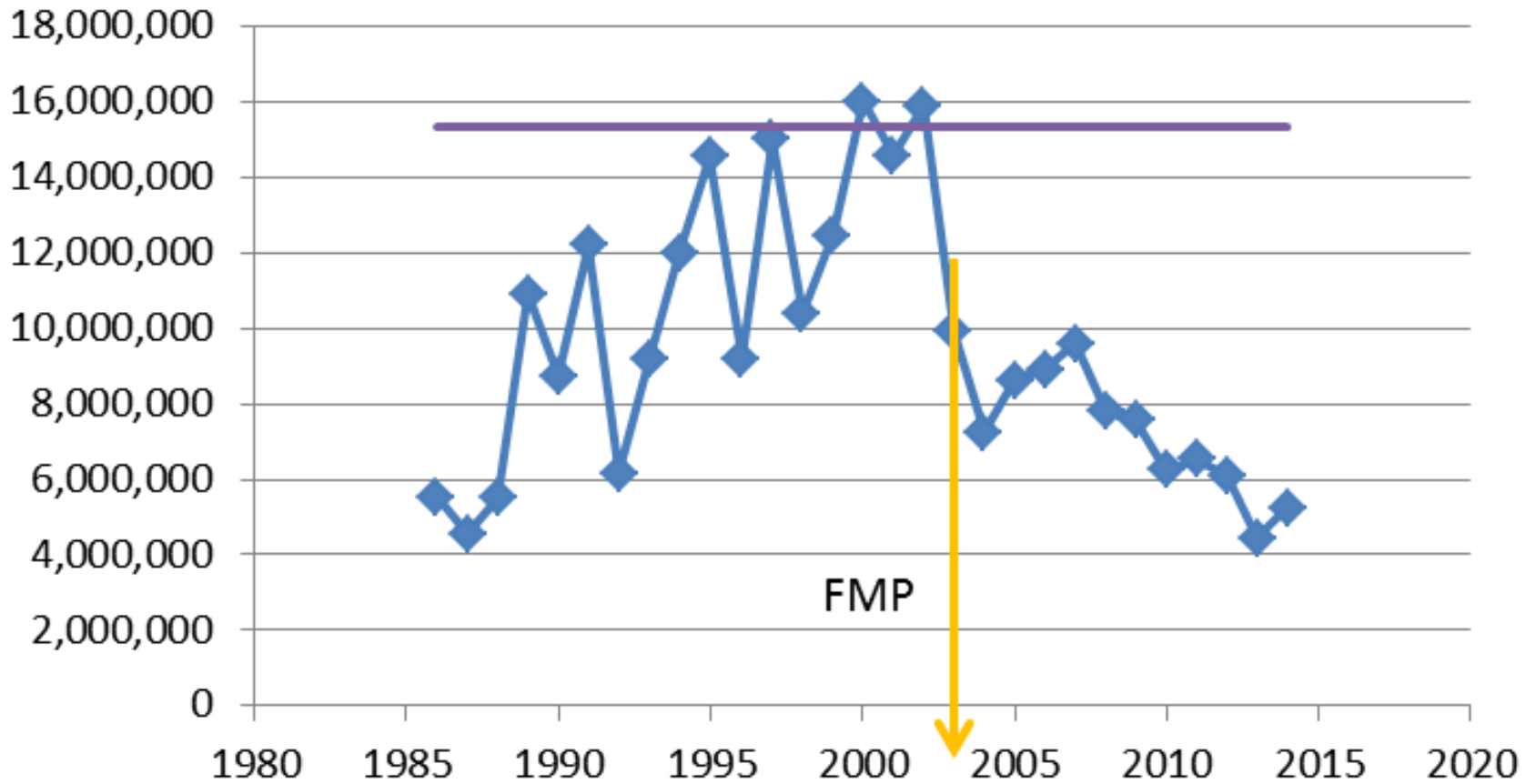
SSC April 2010

- Initial ABC control rule for data limited stocks
- OFL
 - Reference period of 1994-1997
 - Reference value: mean landings
- ABC
 - Reduced by 25% for uncertainty

SSC April 2011

- Revised data poor approach based on council and agency recommendations
 - Led to decision tree approach
- OFL unknown
- ABC
 - Reference period 1999 – 2008
 - Reference statistic 3rd highest
 - 14,596,216
- Comprehensive Amendment
 - ABC=ACL=OY

Dolphin Recreational Trends



Note: The ABC was updated in Amendment 5 to incorporate revised MRIP estimates, to 15.3 million pounds

2003 FMP

- 10 fish recreational possession limit
 - Predicted 7% reduction in weight
 - 1998-2002 landings = 13.9 mpds
 - 2004-2008 landings = 4.4 mpds
 - Reduction of 39%
- Did other measures have an amplifying effect?