

Oculina Bank Habitat Area of Particular Concern

Quarterly Enforcement Report

FY 2013
Oct 2012 - Sep 2013



Prepared by:
Richard Chesler
Special Agent, NOAA OLE

November 2013

CONTENTS:

Case Dispositions

Enforcement media stories

Enforcement outreach activities

Enforcement training

Patrol Activity Highlights

Patrol Reports

CASE DISPOSITIONS:

No Oculina specific case dispositions this quarter.

MEDIA:

No Oculina specific media this quarter.

OUTREACH:

In February, SA Chesler responded to a request from a commercial snapper-grouper fisher for Oculina Bank information.

TRAINING:

SA Chesler conducted two Oculina Bank and St. Lucie Humps MPA training sessions at USCG Station Fort Pierce:

Jan 2013 - USCG Station Fort Pierce personnel

Mar 2013 - USCG Station Fort Pierce, USCGC BLUEFIN, and USCGC CORMORANT boarding officers

PATROL ACTIVITY HIGHLIGHTS:

- 1. The USCG conducted a total of 2 hours (1 day on scene) of cutter and 30 hours of boat patrols within the OHAPC. A breakdown by month of boat patrols was not available at time of submission.**
- 2. The FL FWCC utilized the P/V SEAHAWK, 12 Meter RHIB, and an aircraft to patrol the OHAPC and OECA this fiscal year. FL FWCC conducted a total of 36 hours (5 days on scene) of patrol resulting in a total of 1 commercial fishing vessel and 2 recreational vessel boardings with one state warning issued. The patrol vessel C.T. RANDALL was down for most of the year.**
- 3. SA Chesler, FL FWCC, and a Customs and Border Protection (CBP) Marine Interdiction Unit conducted a patrol of the Western OHAPC east of Port Canaveral. No vessels detected.**

PATROL REPORTS:

Attachment A: USCG and FL FWCC Oculina Bank patrol effort report, Oct - Dec, 2012 (Spreadsheet)

Attachment B: Oculina patrols by agency, Oct - Dec, 2012 (Graph)

Attachment C: Oculina detections and boardings, Oct - Dec, 2012 (Graph)

Attachment D: USCG and FL FWCC Oculina Bank patrol effort report, Jan – Mar, 2013 (Spreadsheet)

Attachment E: Oculina patrols by agency, Jan - Mar, 2013 (Graph)

Attachment F: Oculina detections and boardings, Jan - Mar, 2013 (Graph)

Attachment G: USCG and FL FWCC Oculina Bank patrol effort report, Apr – Jun, 2013 (Spreadsheet)

Attachment H: Oculina patrols by agency, Apr – Jun, 2013 (Graph)

**Attachment I: Oculina detections and boardings, Apr – Jun, 2013
(Graph)**

**Attachment J: USCG and FL FWCC Oculina Bank patrol effort
report, Jul - Sep, 2013 (Spreadsheet)**

Attachment K: Oculina patrols by agency, Jul - Sep, 2013 (Graph)

**Attachment L: Oculina detections and boardings, Jul - Sep, 2013
(Graph)**

NOTES:

This report is comprised of data submitted by LCDR Elizabeth Buendia, and LT Morgan Fowler, USCG; Cortney Sims, and Lt. Brad Givens, FL FWCC.

Secondary hours for the USCG indicates hours an asset (aircraft, cutter, boat) was in the Oculina Bank but on a non-fisheries mission.

Secondary hours for the FL FWCC and NOAA indicate hours an asset (aircraft, patrol vessel, boat) was transiting to the Oculina Bank or patrolling near the area and available to respond.

**USCG AND FL FWCC OCULINA BANK PATROL EFFORT REPORT:
OCT-DEC 2012**

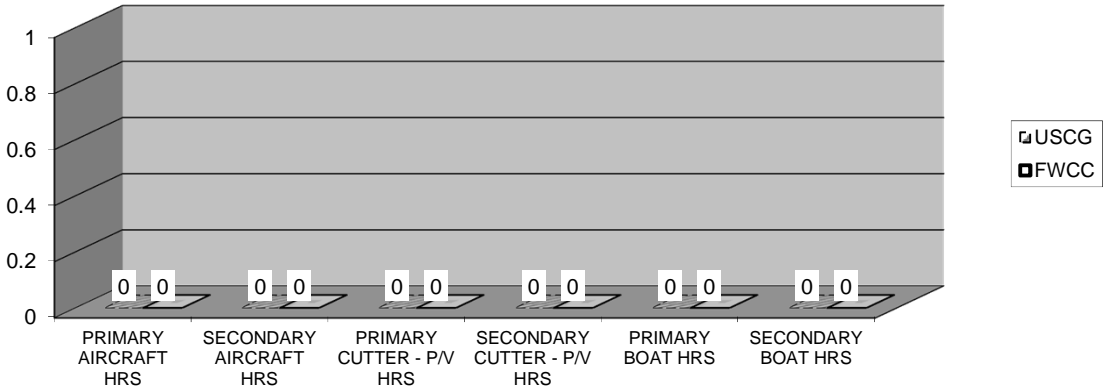
	USCG		FWCC		MONTHLY TOTAL	Notes
	OCT	YTD	OCT	YTD		
	COMMERCIAL F/V DETECTED	0	0	0		
COMMERCIAL F/V BOARDED	0	0	0	0	0	
RECREATIONAL F/V DETECTED	0	0	0	0	0	
RECREATIONAL F/V BOARDED	0	0	0	0	0	
PRIMARY AIRCRAFT HRS	0	0	0	0	0	
SECONDARY AIRCRAFT HRS	0	0	0	0	0	
PRIMARY CUTTER - P/V HRS	0	0	0	0	0	
SECONDARY CUTTER - P/V HRS	0	0	0	0	0	
PRIMARY BOAT HRS	0	0	0	0	0	
SECONDARY BOAT HRS	0	0	0	0	0	
VIOLATIONS DETECTED	0	0	0	0	0	
SUB TOTAL PATROL HRS	0	0	0	0	0	
	USCG		FWCC		MONTHLY TOTAL	Notes
	NOV	YTD	NOV	YTD		
	COMMERCIAL F/V DETECTED	0	0	0		
COMMERCIAL F/V BOARDED	0	0	0	0	0	
RECREATIONAL F/V DETECTED	0	0	0	0	0	
RECREATIONAL F/V BOARDED	0	0	0	0	0	
PRIMARY AIRCRAFT HRS	0	0	0	0	0	
SECONDARY AIRCRAFT HRS	0	0	0	0	0	
PRIMARY CUTTER - P/V HRS	0	0	0	0	0	
SECONDARY CUTTER - P/V HRS	0	0	0	0	0	
PRIMARY BOAT HRS	0	0	0	0	0	
SECONDARY BOAT HRS	0	0	0	0	0	
VIOLATIONS DETECTED	0	0	0	0	0	
SUB TOTAL	0	0	0	0	0	
	USCG		FWCC		MONTHLY TOTAL	Notes
	DEC	YTD	DEC	YTD		
	COMMERCIAL F/V DETECTED	0	0	0		
COMMERCIAL F/V BOARDED	0	0	0	0	0	
RECREATIONAL F/V DETECTED	0	0	0	0	0	
RECREATIONAL F/V BOARDED	0	0	0	0	0	
PRIMARY AIRCRAFT HRS	0	0	0	0	0	
SECONDARY AIRCRAFT HRS	0	0	0	0	0	
PRIMARY CUTTER - P/V HRS	0	0	0	0	0	
SECONDARY CUTTER - P/V HRS	0	0	0	0	0	
PRIMARY BOAT HRS	0	0	0	0	0	
SECONDARY BOAT HRS	0	0	0	0	0	
VIOLATIONS DETECTED	0	0	0	0	0	
SUB TOTAL	0	0	0	0	0	

FY 2013 - 1st QUARTER



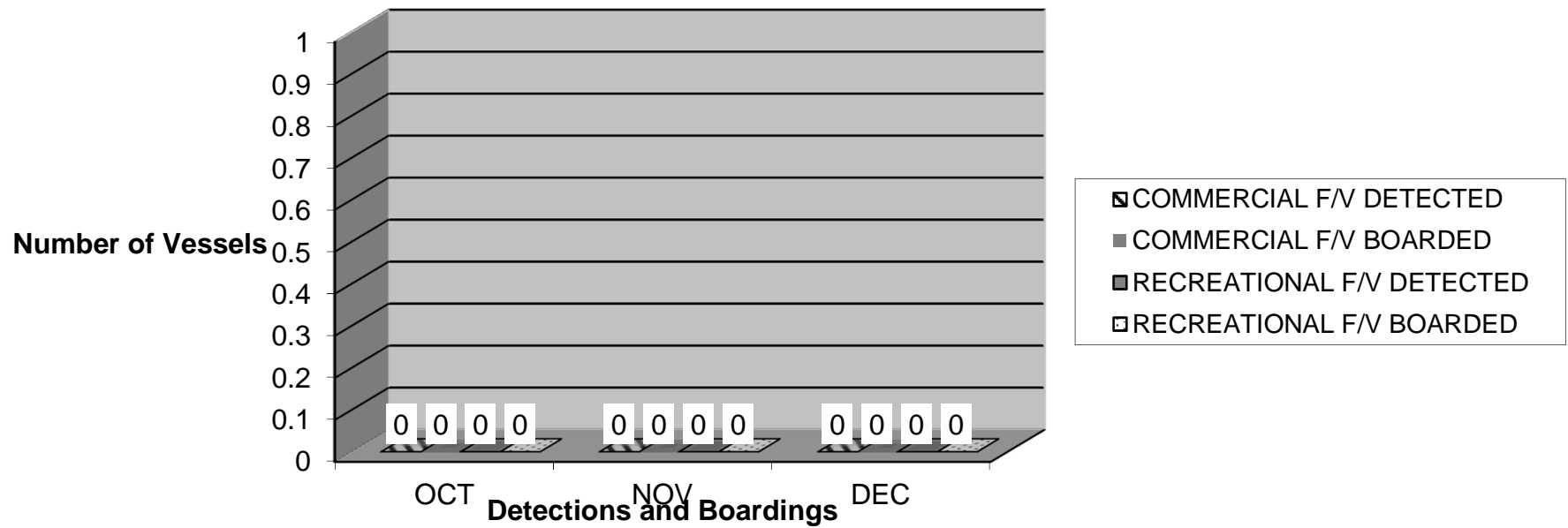
1st Quarter FY 2013

Hours



Patrol Asset

1st Quarter FY 2013

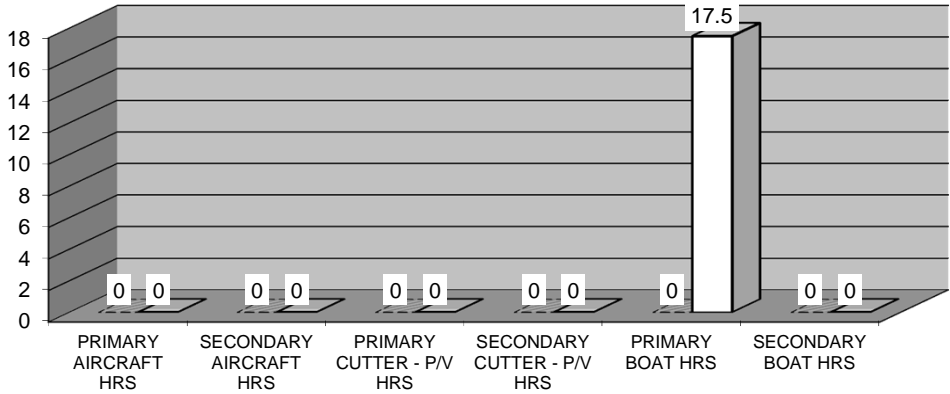


**USCG AND FL FWCC OCUлина BANK PATROL EFFORT REPORT:
JAN-MAR 2013**

	USCG		FWCC		MONTHLY TOTAL	Notes
	JAN	YTD	JAN	YTD		
FY 2013 - 2nd QUARTER	COMMERCIAL F/V DETECTED	0	0	0	0	FWCC CT RANDALL down FWCC 0 days on-scene USCG 0 days on-scene
	COMMERCIAL F/V BOARDED	0	0	0	0	
	RECREATIONAL F/V DETECTED	0	0	0	0	
	RECREATIONAL F/V BOARDED	0	0	0	0	
	PRIMARY AIRCRAFT HRS	0	0	0	0	
	SECONDARY AIRCRAFT HRS	0	0	0	0	
	PRIMARY CUTTER - P/V HRS	0	0	0	0	
	SECONDARY CUTTER - P/V HRS	0	0	0	0	
	PRIMARY BOAT HRS	0	0	0	0	
	SECONDARY BOAT HRS	0	0	0	0	
	VIOLATIONS DETECTED	0	0	0	0	
SUB TOTAL PATROL HRS	0	0	0	0	0	
	FEB	YTD	FEB	YTD	MONTHLY TOTAL	Notes
COMMERCIAL F/V DETECTED	0	0	0	0	0	FWCC 12 Meter RHIB patrolled the OECA
COMMERCIAL F/V BOARDED	0	0	0	0	0	No vessels detected within OECA/OHAPC
RECREATIONAL F/V DETECTED	0	0	0	0	0	
RECREATIONAL F/V BOARDED	0	0	0	0	0	FWCC CT RANDALL down
PRIMARY AIRCRAFT HRS	0	0	0	0	0	
SECONDARY AIRCRAFT HRS	0	0	0	0	0	
PRIMARY CUTTER - P/V HRS	0	0	0	0	0	
SECONDARY CUTTER - P/V HRS	0	0	0	0	0	USCG 0 days on-scene
PRIMARY BOAT HRS	0	0	0	8.5	8.5	FWCC 1 day on-scene
SECONDARY BOAT HRS	0	0	0	0	0	
VIOLATIONS DETECTED	0	0	0	0	0	
SUB TOTAL	0	0	0	8.5	8.5	
	MAR	YTD	MAR	YTD	MONTHLY TOTAL	Notes
COMMERCIAL F/V DETECTED	0	0	0	0	0	FWCC 12 Meter RHIB patrolled the OECA
COMMERCIAL F/V BOARDED	0	0	0	0	0	Two recreational vessels detected in OECA
RECREATIONAL F/V DETECTED	0	0	2	2	2	and boarded, no violations noted
RECREATIONAL F/V BOARDED	0	0	0	0	0	Several vessels detected and boarded outside
PRIMARY AIRCRAFT HRS	0	0	0	0	0	
SECONDARY AIRCRAFT HRS	0	0	0	0	0	FWCC CT RANDALL down
PRIMARY CUTTER - P/V HRS	0	0	0	0	0	
SECONDARY CUTTER - P/V HRS	0	0	0	0	0	
PRIMARY BOAT HRS	0	0	9	17.5	9	USCG day on-scene
SECONDARY BOAT HRS	0	0	0	0	0	FWCC 1 day on-scene
VIOLATIONS DETECTED	0	0	0	0	0	
SUB TOTAL	0	0	9	17.5	9	

2nd Quarter FY 2013

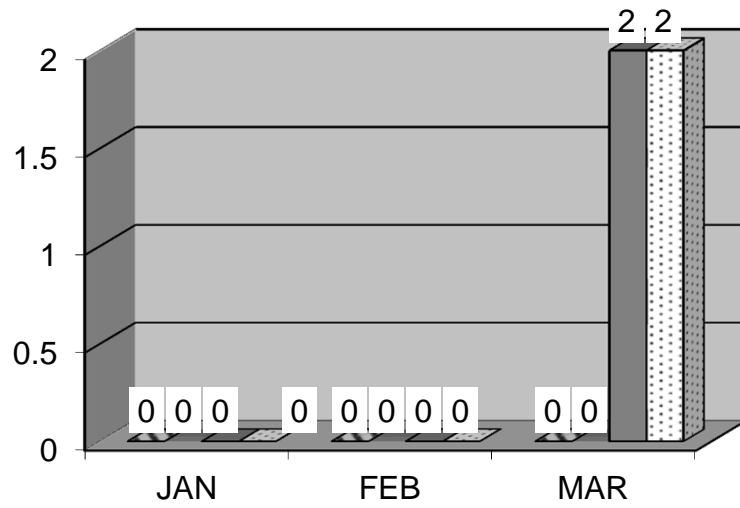
Hours



Patrol Asset

2nd Quarter FY 2013

Number of Vessels

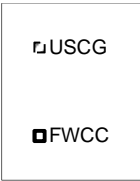
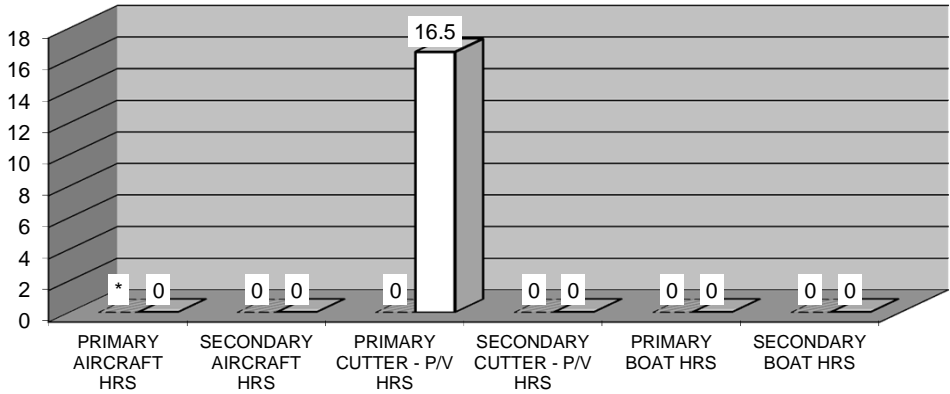


- COMMERCIAL F/V DETECTED
- COMMERCIAL F/V BOARDED
- RECREATIONAL F/V DETECTED
- RECREATIONAL F/V BOARDED

Detections and Boardings

3rd Quarter FY 2013

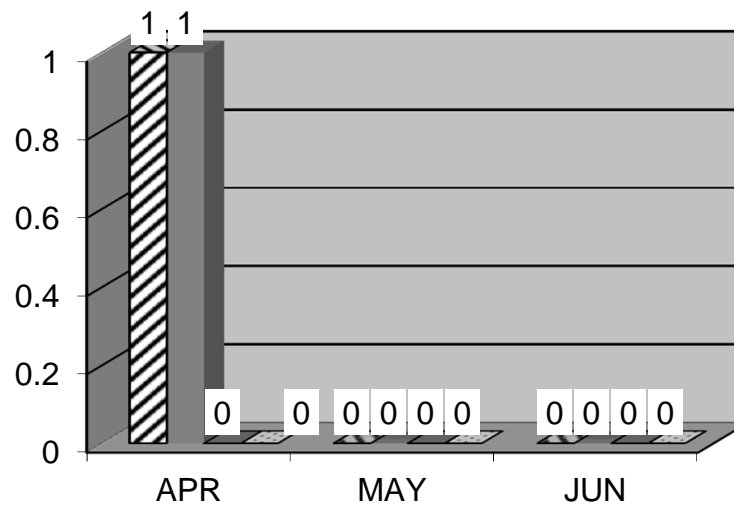
Hours



* Unknown USCG UAV hours

3rd Quarter FY 2013

Number of Vessels



- COMMERCIAL F/V DETECTED
- COMMERCIAL F/V BOARDED
- RECREATIONAL F/V DETECTED
- RECREATIONAL F/V BOARDED

Detections and Boardings

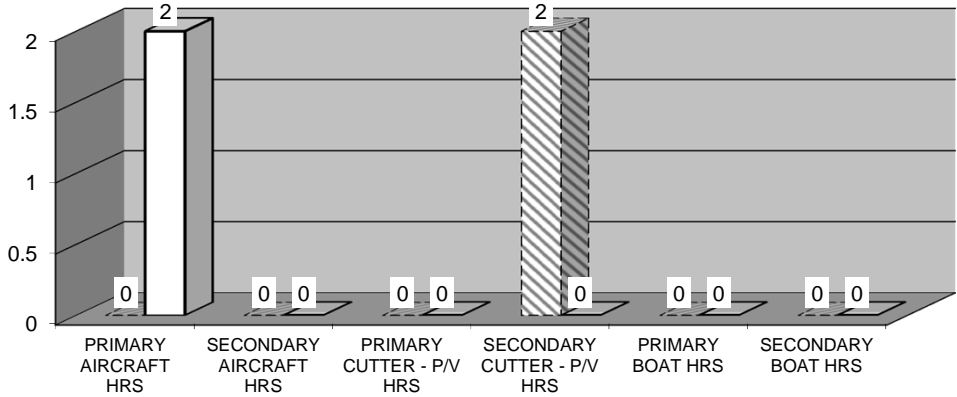
**USCG AND FL FWCC OCULINA BANK PATROL EFFORT REPORT:
JUL - SEP 2013**

	USCG		FWCC		MONTHLY TOTAL	Notes
	JUL	YTD	JUL	YTD		
COMMERCIAL F/V DETECTED	0	0	0	1	0	FWCC Aircraft patrol of OECA and St. Lucie Humps MPA No vessels detected in OECA or St. Lucie Humps MPA FWCC CT RANDALL down USCG 0 days on-scene FWCC 1 day on-scene
COMMERCIAL F/V BOARDED	0	0	0	1	0	
RECREATIONAL F/V DETECTED	0	0	0	2	0	
RECREATIONAL F/V BOARDED	0	0	0	2	0	
PRIMARY AIRCRAFT HRS	0	0	2	2	2	
SECONDARY AIRCRAFT HRS	0	0	0	0	0	
PRIMARY CUTTER - P/V HRS	0	0	0	16.5	0	
SECONDARY CUTTER - P/V HRS	0	0	0	0	0	
PRIMARY BOAT HRS	0	0	0	17.5	0	
SECONDARY BOAT HRS	0	0	0	0	0	
VIOLATIONS DETECTED	0	0	0	0	0	
SUB TOTAL PATROL HRS	0	0	2	36	2	
	AUG	YTD	AUG	YTD	MONTHLY TOTAL	Notes
COMMERCIAL F/V DETECTED	0	0	0	1	0	USCG 0 days on-scene FWCC 0 days on-scene
COMMERCIAL F/V BOARDED	0	0	0	1	0	
RECREATIONAL F/V DETECTED	0	0	0	2	0	
RECREATIONAL F/V BOARDED	0	0	0	2	0	
PRIMARY AIRCRAFT HRS	0	0	0	2	0	
SECONDARY AIRCRAFT HRS	0	0	0	0	0	
PRIMARY CUTTER - P/V HRS	0	0	0	16.5	0	
SECONDARY CUTTER - P/V HRS	0	0	0	0	0	
PRIMARY BOAT HRS	0	0	0	17.5	0	
SECONDARY BOAT HRS	0	0	0	0	0	
VIOLATIONS DETECTED	0	0	0	0	0	
SUB TOTAL	0	0	0	36	0	
	SEP	YTD	SEP	YTD	MONTHLY TOTAL	Notes
COMMERCIAL F/V DETECTED	0	0	0	1	0	USCGC KINGFISHER patrolled OHAPC during transit, no vessels detected. Note: 30 hours of USCG Sta. Fort Pierce small boat patrols reported; breakdown by month not available at time of report USCG 1 day on-scene FWCC 0 days on-scene
COMMERCIAL F/V BOARDED	0	0	0	1	0	
RECREATIONAL F/V DETECTED	0	0	0	2	0	
RECREATIONAL F/V BOARDED	0	0	0	2	0	
PRIMARY AIRCRAFT HRS	0	0	0	2	0	
SECONDARY AIRCRAFT HRS	0	0	0	0	0	
PRIMARY CUTTER - P/V HRS	0	0	0	16.5	0	
SECONDARY CUTTER - P/V HRS	2	2	0	2	2	
PRIMARY BOAT HRS	0	30	0	17.5	0	
SECONDARY BOAT HRS	0	0	0	0	0	
VIOLATIONS DETECTED	0	0	0	0	0	
SUB TOTAL	2	32	0	38	2	

FY 2013 - 4th QUARTER

4th Quarter FY 2013

Hours



Patrol Asset

4th Quarter FY 2013

