



# The new and improved Simple Viewer for the South Atlantic Conservation Blueprint

---

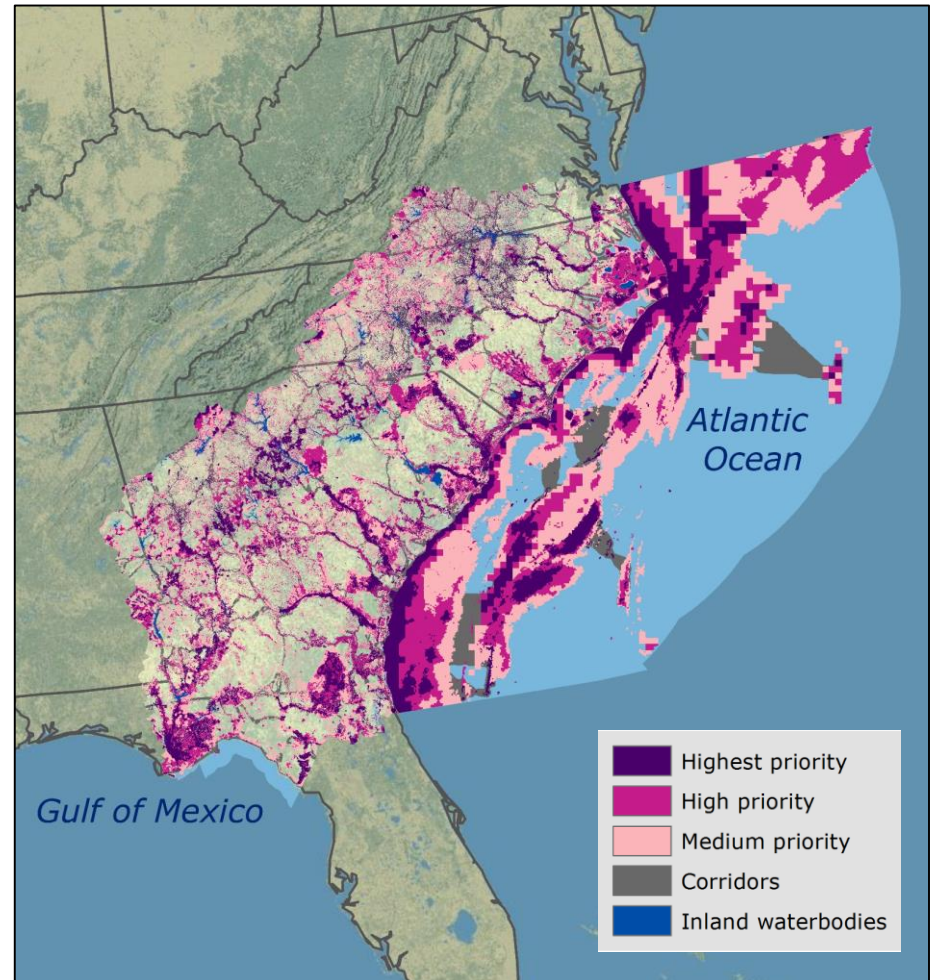
Hilary Morris, Blueprint User Support & Communications



# What does the South Atlantic LCC do?

## Our mission

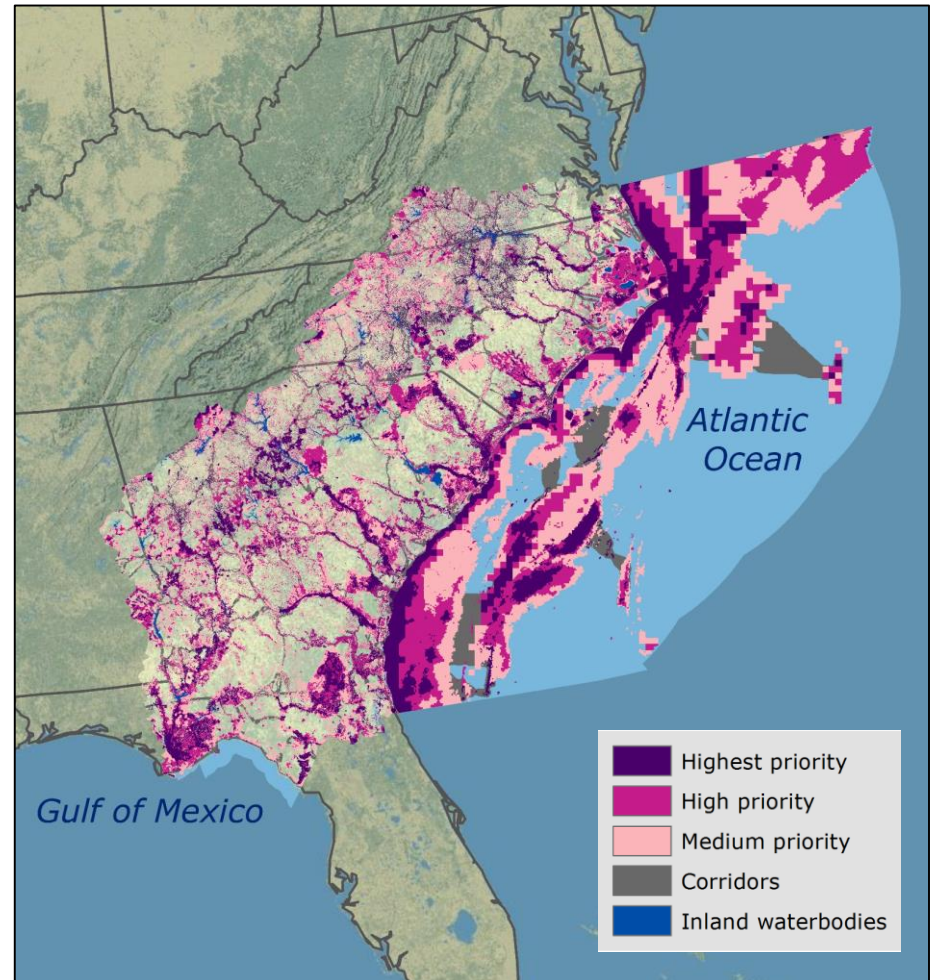
- To facilitate conservation actions that sustain natural and cultural resources, guided by a shared adaptive blueprint



# What does the South Atlantic LCC do?

## What is the Blueprint?

- A living spatial plan prioritizing opportunities for shared conservation action in the face of future change



# Accessing Data

## The Conservation Planning Atlas

- <http://salcc.databasin.org>

**South Atlantic Conservation Planning Atlas**  
powered by DATA BASIN

Search by keyword or location

**Welcome to the South Atlantic LCC Conservation Planning Atlas (CPA)!**  
The South Atlantic CPA is a free mapping portal designed to share regional spatial data. You can overlay multiple layers, create and export maps, and download data. In addition to the Conservation Blueprint, you'll find information about connectivity, protected lands, urban growth, and much more.

Get started quickly with the South Atlantic LCC CPA [Take a Tour](#)

**Explore the Blueprint 2.2 in the Simple Viewer**

**Learn More About the Conservation Blueprint**

**Access Blueprint 2.2 Data**

- Conservation Blueprint 2.2
- Ecosystem Indicators
- Future Threats

## The Simple Viewer

- <http://blueprint.southatlanticlcc.org>

**South Atlantic Conservation Blueprint 2.2**

Zoom in to select an area

**Welcome to the South Atlantic Conservation Blueprint Simple Viewer**  
The Conservation Blueprint is a living spatial plan to conserve natural and cultural resources for future generations. It identifies priority areas for shared conservation action. Blueprint 2.2 is completely data-driven, prioritizing the lands and waters of the South Atlantic region based on ecosystem indicator models and a connectivity analysis. Better indicator condition suggests higher ecosystem integrity and higher importance for natural and cultural resources across all ecosystems collectively. So far, more than 500 people from 150 organizations actively participated in the collaborative development of the Blueprint.

This Simple Viewer summarizes the Blueprint priorities and supporting information within subwatersheds and marine lease blocks. In a new pixel mode, you can also explore pixel-level details of what indicators are driving the Blueprint priorities.

**Blueprint Priorities**

- Highest priority** 10% of South Atlantic  
The most important areas for natural and cultural resources based on indicator condition.
- High priority** 15% of South Atlantic  
Important areas for natural and cultural resources based on indicator condition.
- Medium priority** 20% of South Atlantic  
Above-average areas for natural and cultural resources based on indicator condition, capturing potential restoration opportunities.
- Corridors** 5% of South Atlantic  
These are connections between large patches of highest priority areas and secured lands, optimized for efficiency and indicator condition in a least cost path analysis.

Legend: **Blueprint 2.2 Priority**  
Highest priority  
High priority  
Medium priority  
Corridors  
Inland waterbodies

# New and improved Simple Viewer live demo

---

- Video on YouTube: <https://youtu.be/GrFy7baRpak>

Questions?

