



# ***Dolphin Wahoo Participatory Workshop Update***

Julia Byrd, John Hadley  
SAFMC

Matt McPherson, Mandy Karnauskas, Skyler Sagarese, Scott  
Crosson, Kevin Craig, Cassidy Peterson, Anthony Mastitski  
NOAA Fisheries Southeast Fisheries Science Center

**Dolphin/Wahoo AP Meeting**

**October 28 2020**





# Workshop Overview

**GOAL:** Increase information flow between scientists, managers, and fishermen in support of improved fishery resources in the Atlantic

**Develop a conceptual model of the Dolphin Wahoo fishery in NC/VA & FL Keys**

- *Major factors affecting the fishery*
- *Where risks in fishery lie*
- *What targeted research needed*
- *What is valued in the ecosystem*
- *How changes in ecosystem affect businesses & communities*
- *How environmental factors affect the fishery*

## Collaborators

- *SEFSC (lead): Mandy Karnauskas & Matt McPherson*
- *SAFMC*
- *MREP & Gulf of Maine Research Institute*
- *All of the fishermen & community participants!*

# What we hope to accomplish

- Opportunity for industry to voice concerns and perspectives
- Convey these perspectives to science and management community
- Common understanding fosters improved management
- Understand what people value → end-goals of management
- Identify data gaps → research priorities



# Workshop Locations & Timing

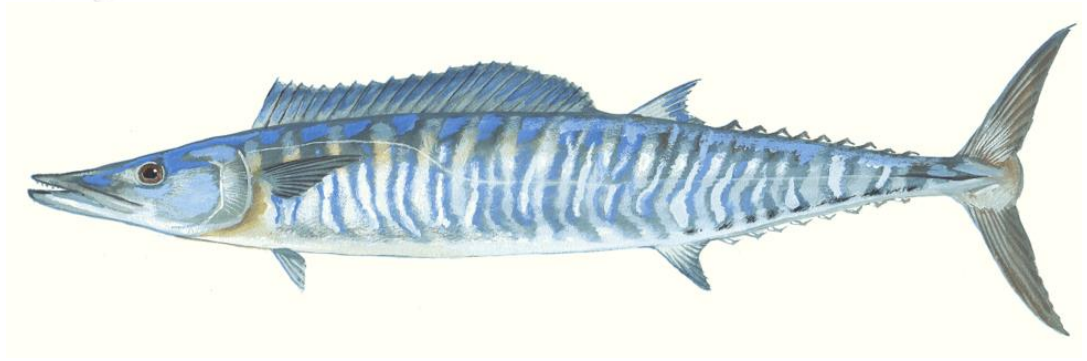
## NC/VA Workshops

- *March 9: Beaufort, NC*
- *March 10: Wanchese, NC*
- *March 11: Virginia Beach, VA*



## FL Keys Workshops

- *Originally scheduled for Summer 2020*
- *COVID-19 impacted planning*
- *Potentially reschedule for early 2021*
- *Will be contacting Council members, AP members, and other interested parties to get input on timing & locations*







# NC/VA Workshop Overview

## Beaufort, NC: March

*7 industry participants*

*Primarily for-hire & limited recreational*



## Wanchese, NC: March

*14 industry participants*

*Primarily commercial & for-hire*



## Virginia Beach, VA

*4 industry participants*

*Primarily for-hire & recreational*

# Workshop Process: Starting Point

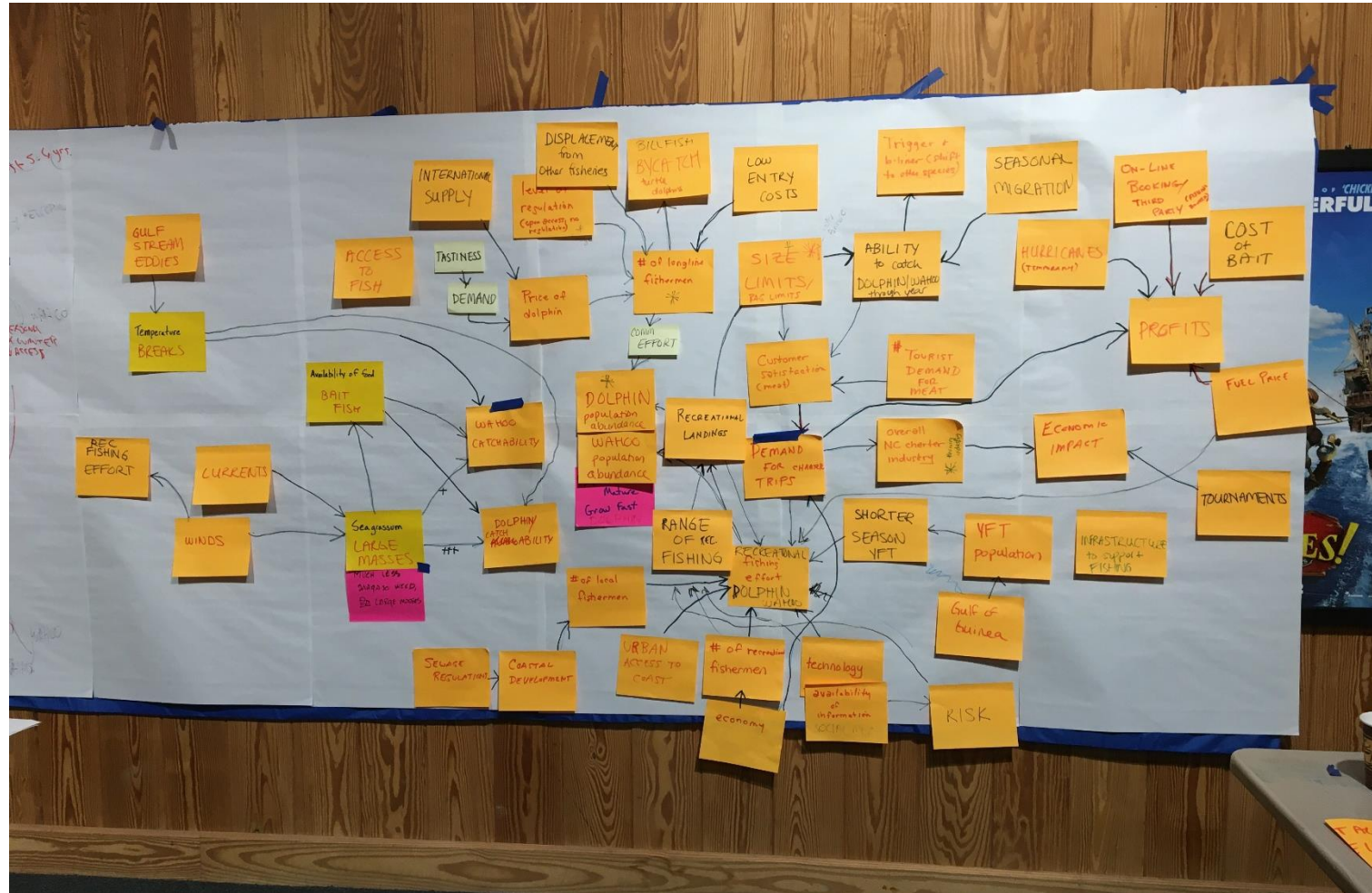




# Workshop Process: Underway

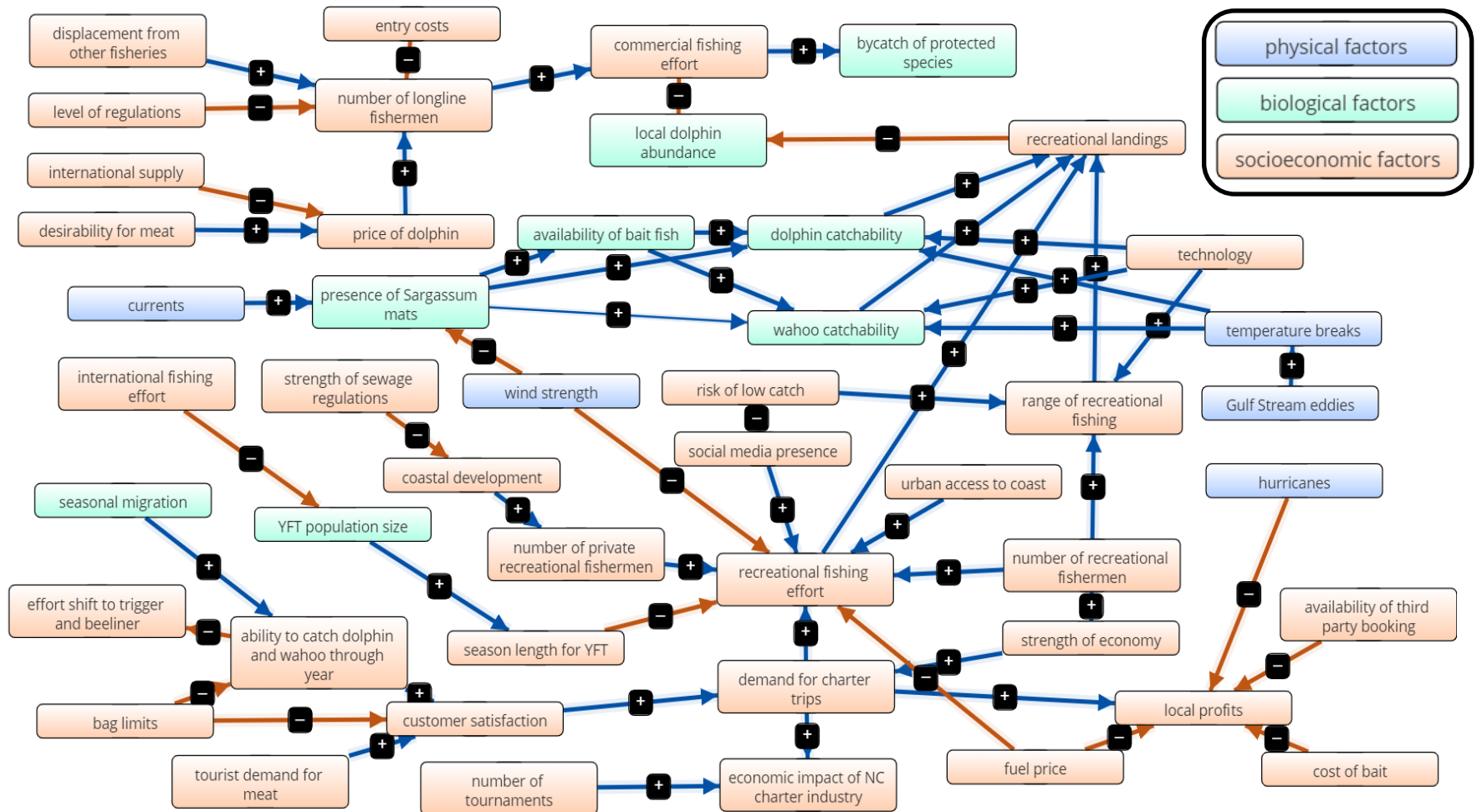


# Workshop Process: End Products





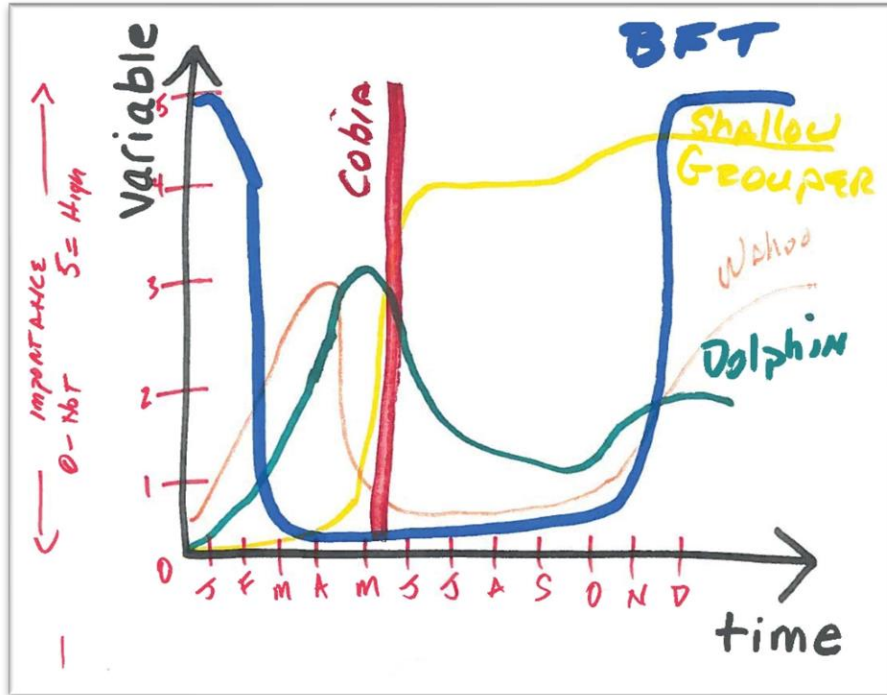
# End Result: Conceptual model



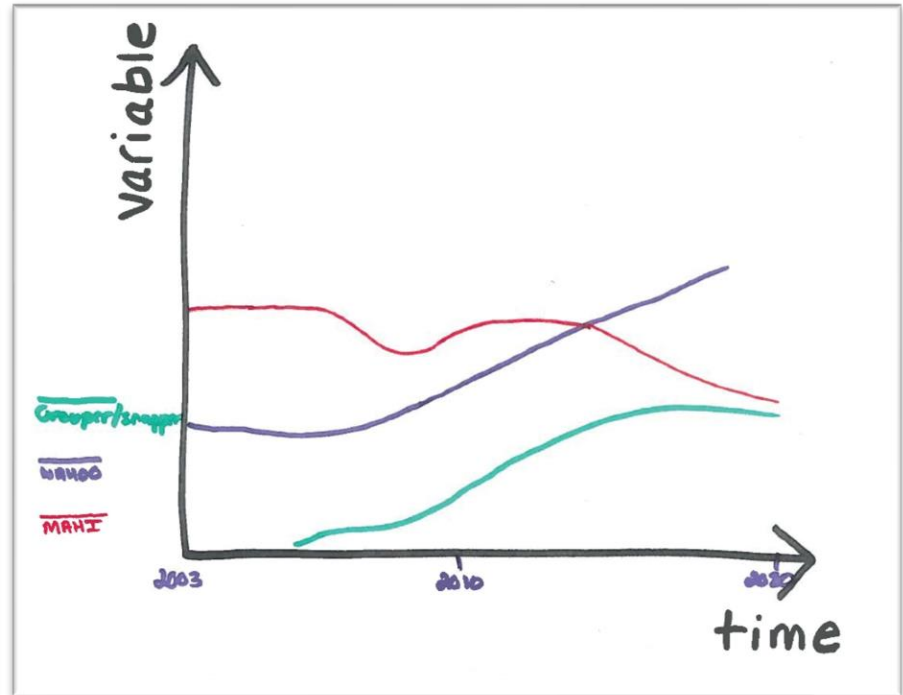
## Digitized model from Beaufort workshop



# Graphs provide further insight



Participants plotted the importance of different species to their fishing operations throughout the year



Participants plotted perceived local abundance trends over time for dolphin, wahoo and other species





# Results

- Perceived overall population trends
- Perceived drivers of commercial sector
- Perceived drivers of recreational sector
  - Social media analysis
- Summary: themes emerging from results compiled to date

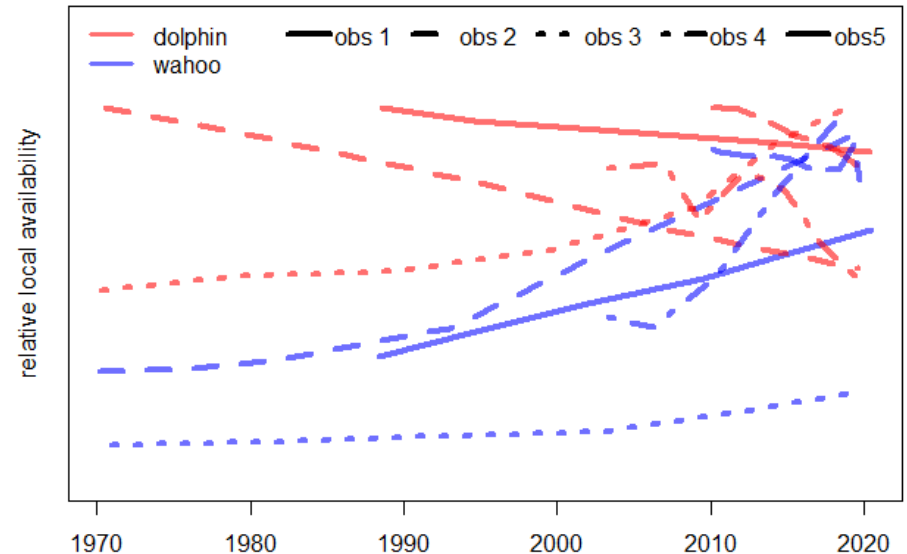
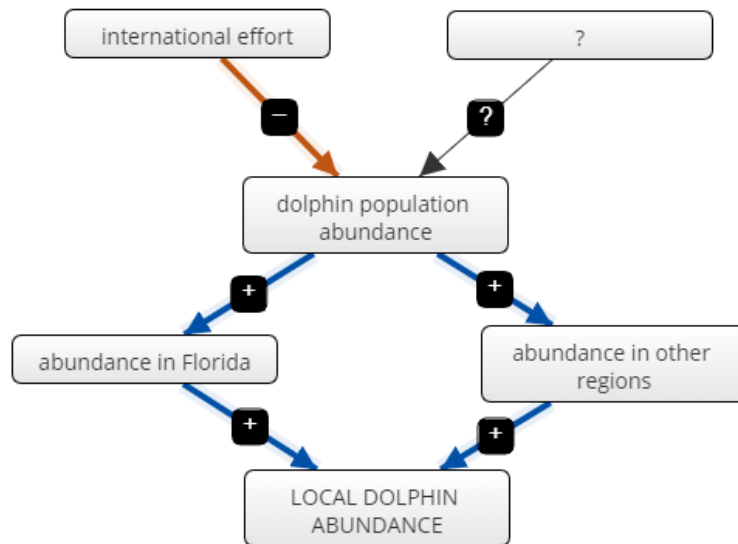
## Caveats:

- Results represent workshop participant perspectives (e.g., issues that warrant further investigation)
- Perspectives are regionally specific (do not necessarily represent the average over management area)



# Perceived abundance trends

Observations were largely attuned to local abundance. Few insights on overall stock abundance.



Beaufort - average perception: local dolphin availability has been gradually decreasing and local wahoo availability has been increasing.

Virginia Beach - average perception: no change in dolphin or wahoo

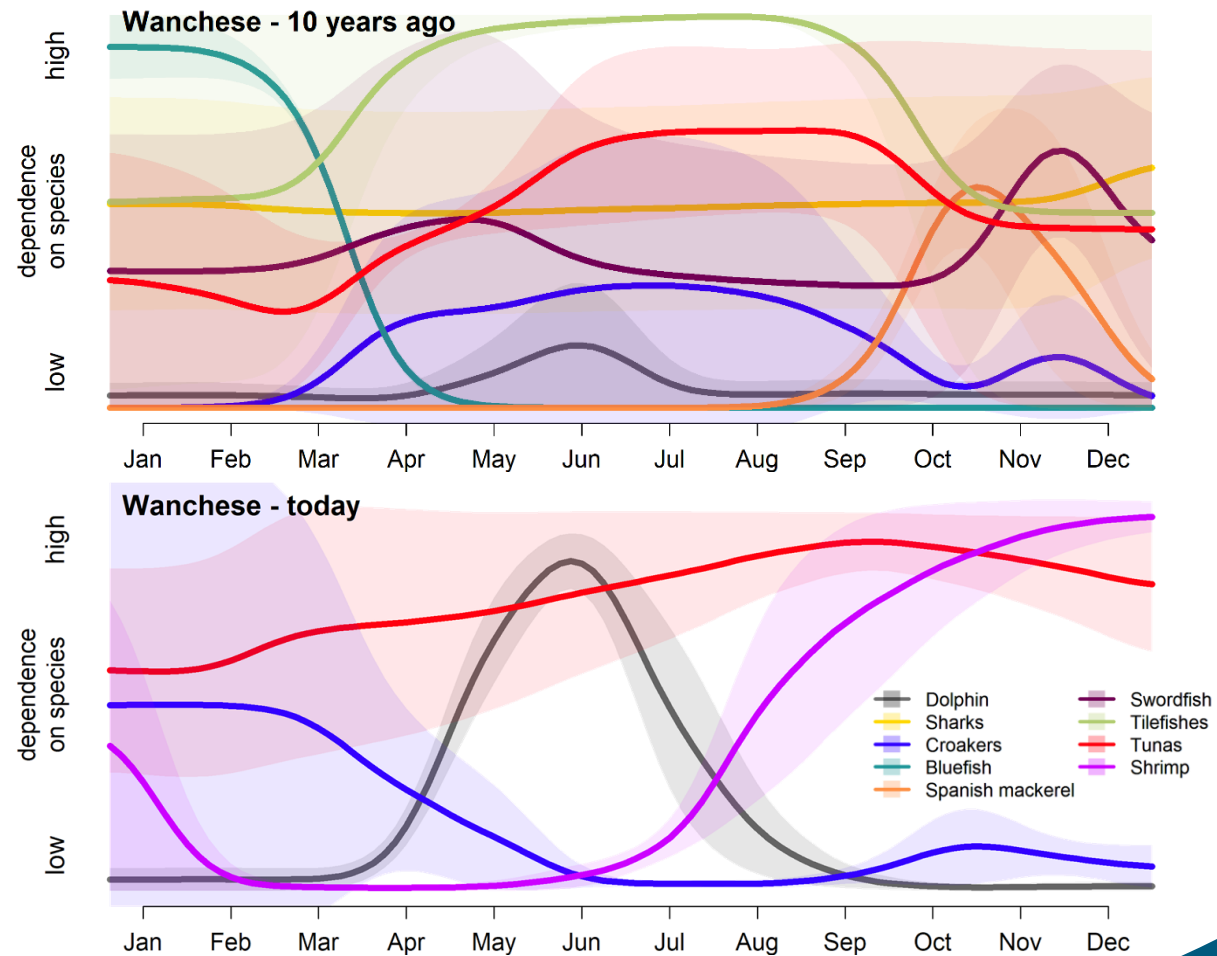




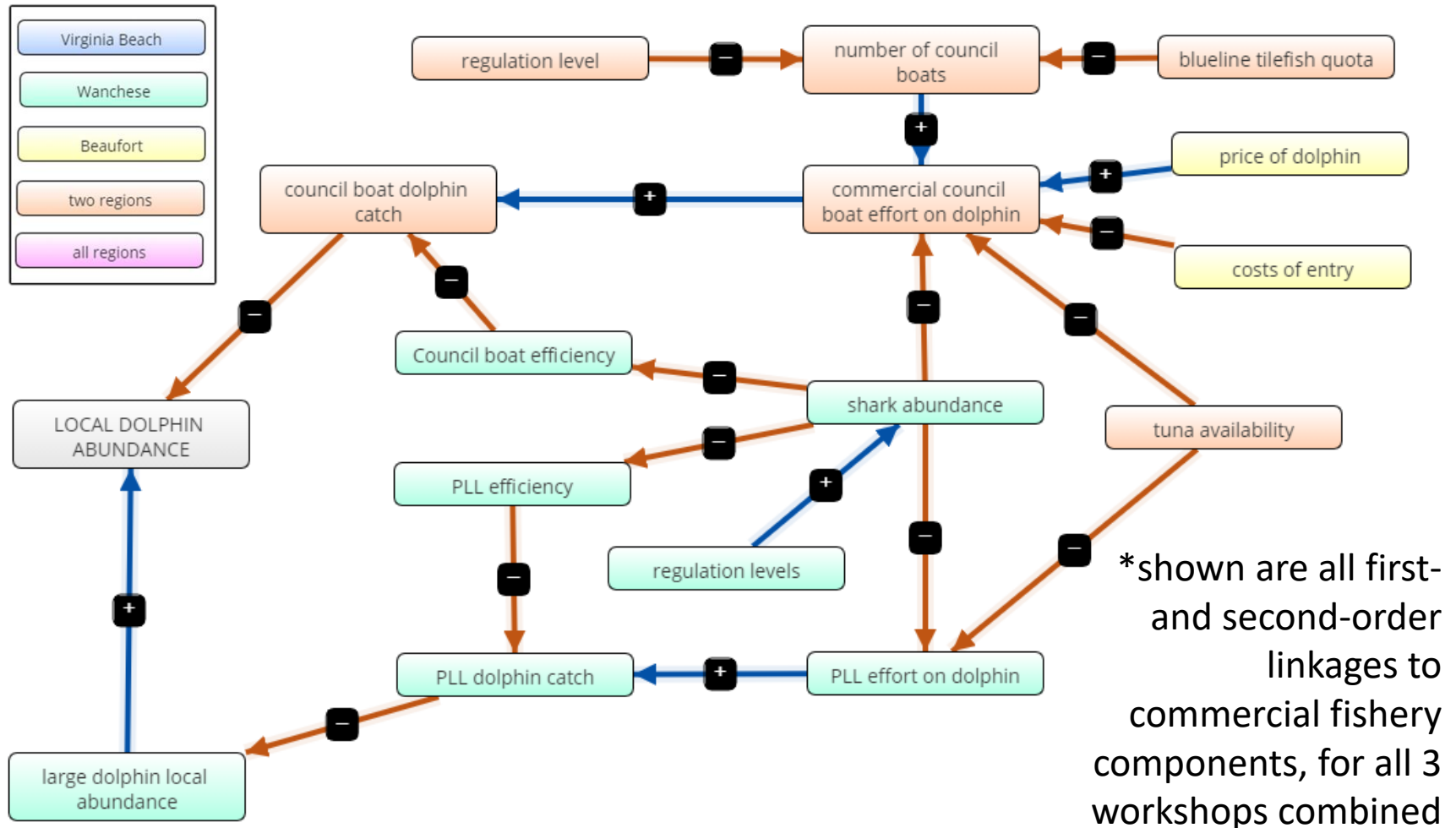
# Which species do your businesses depend on throughout the year?

## Commercial fleet

- Substantial shifts occurred in last 10 years
- Historical reliance on tilefishes, tunas, sharks, but low dependence on dolphin
- Present dependence on dolphin increased in summer, shrimp in fall
- *Charts represent value to businesses, not landings*

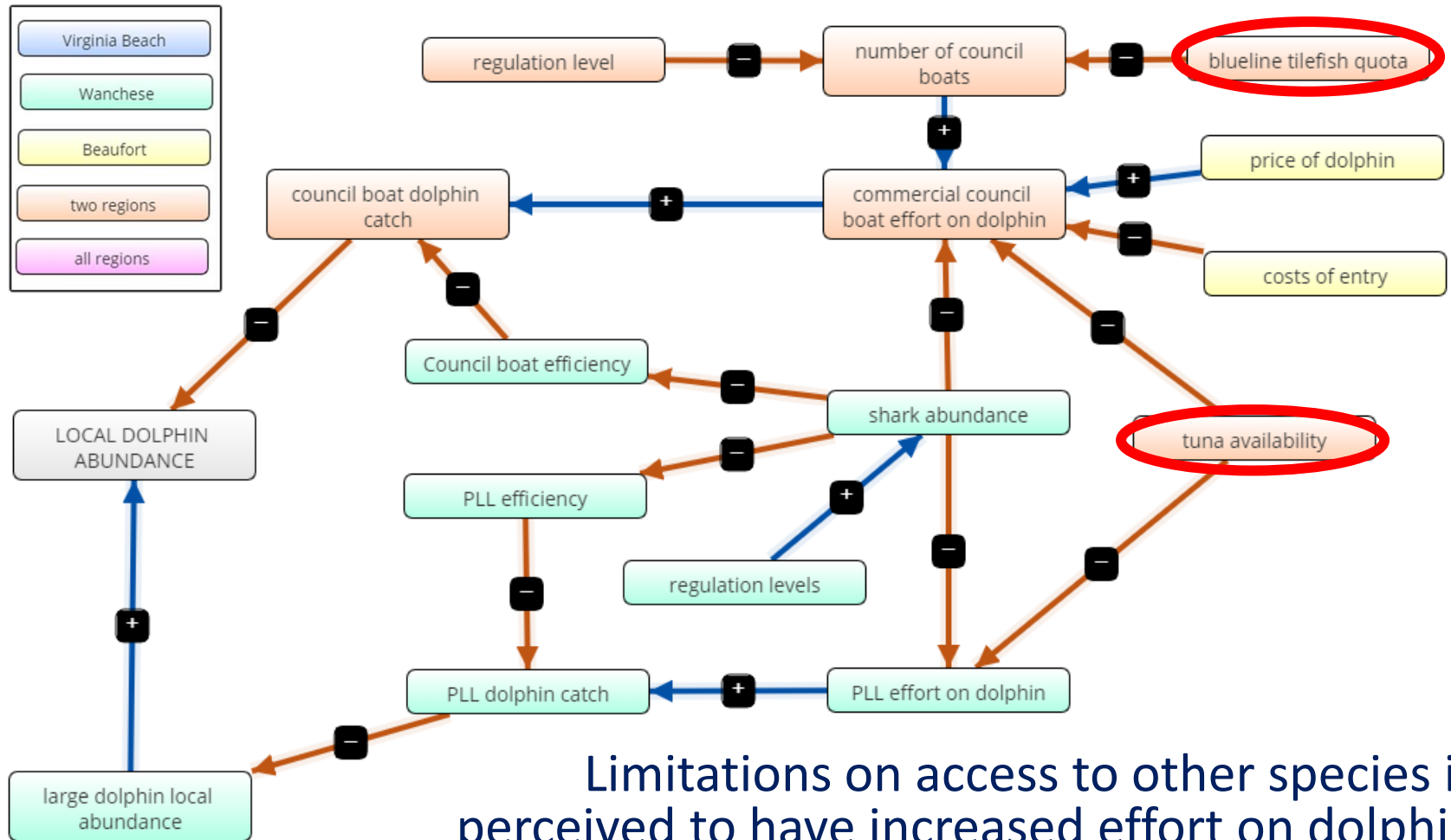


# Commerical conceptual model

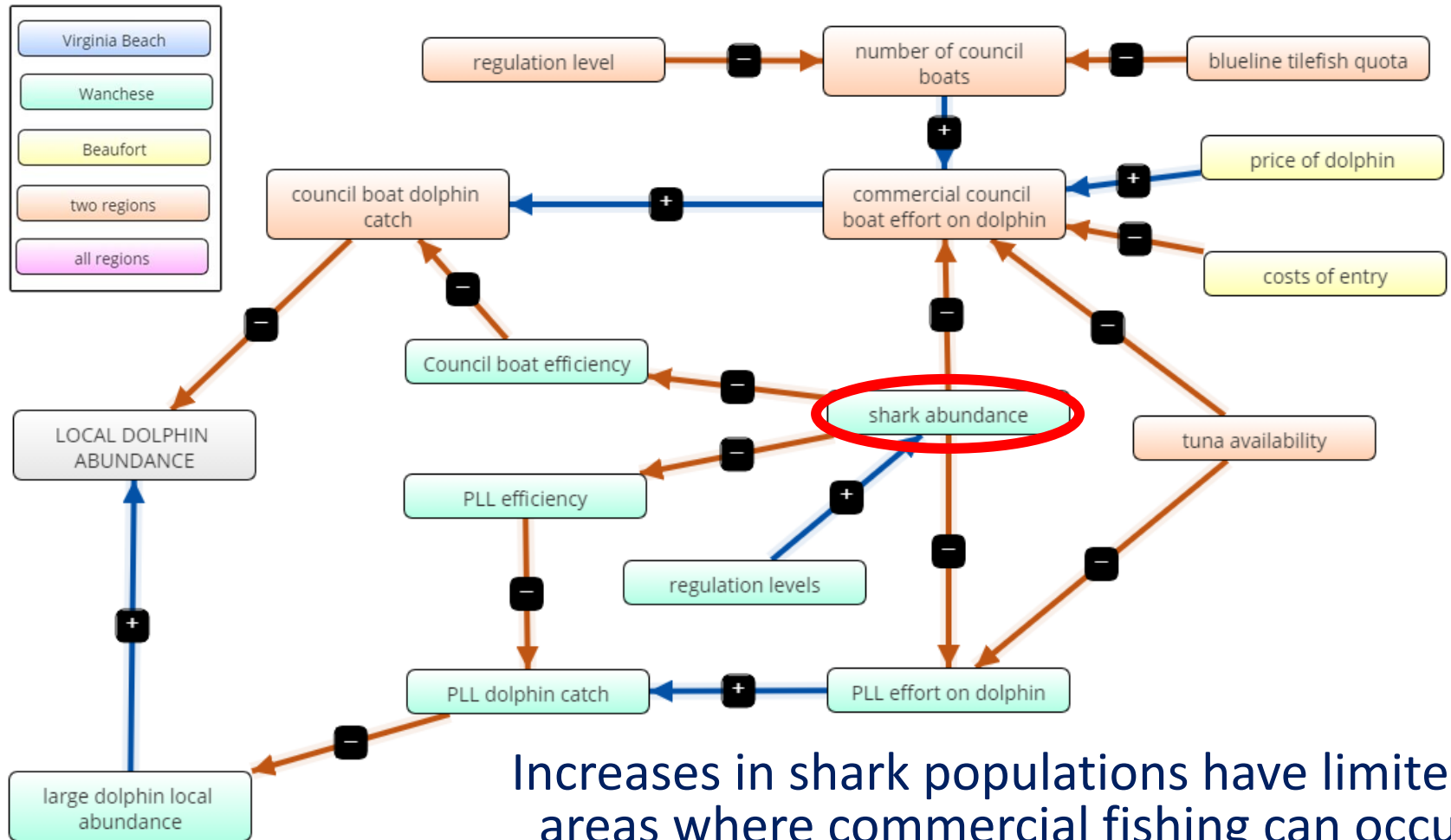




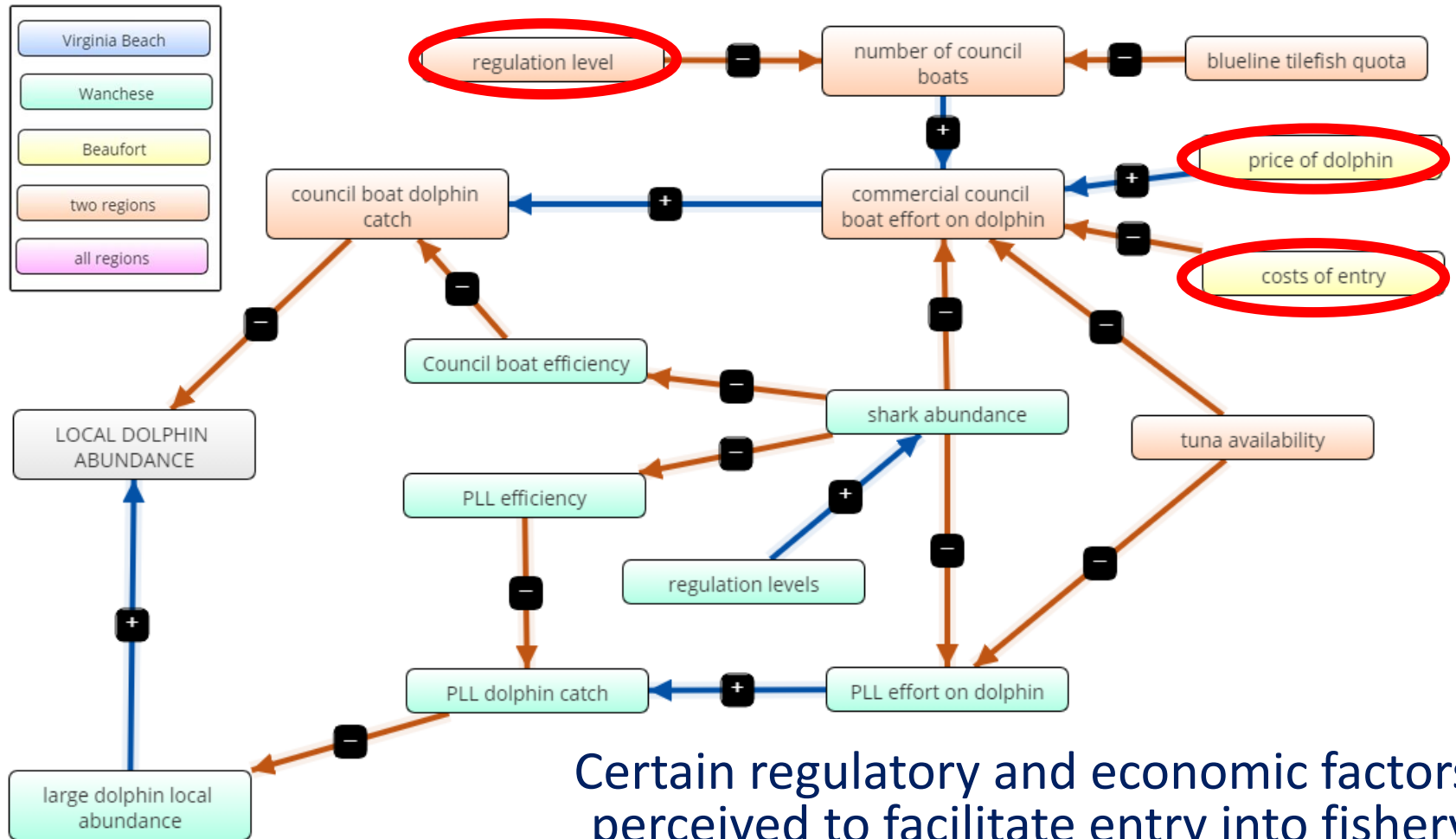
# Commerical conceptual model



# Commerical conceptual model

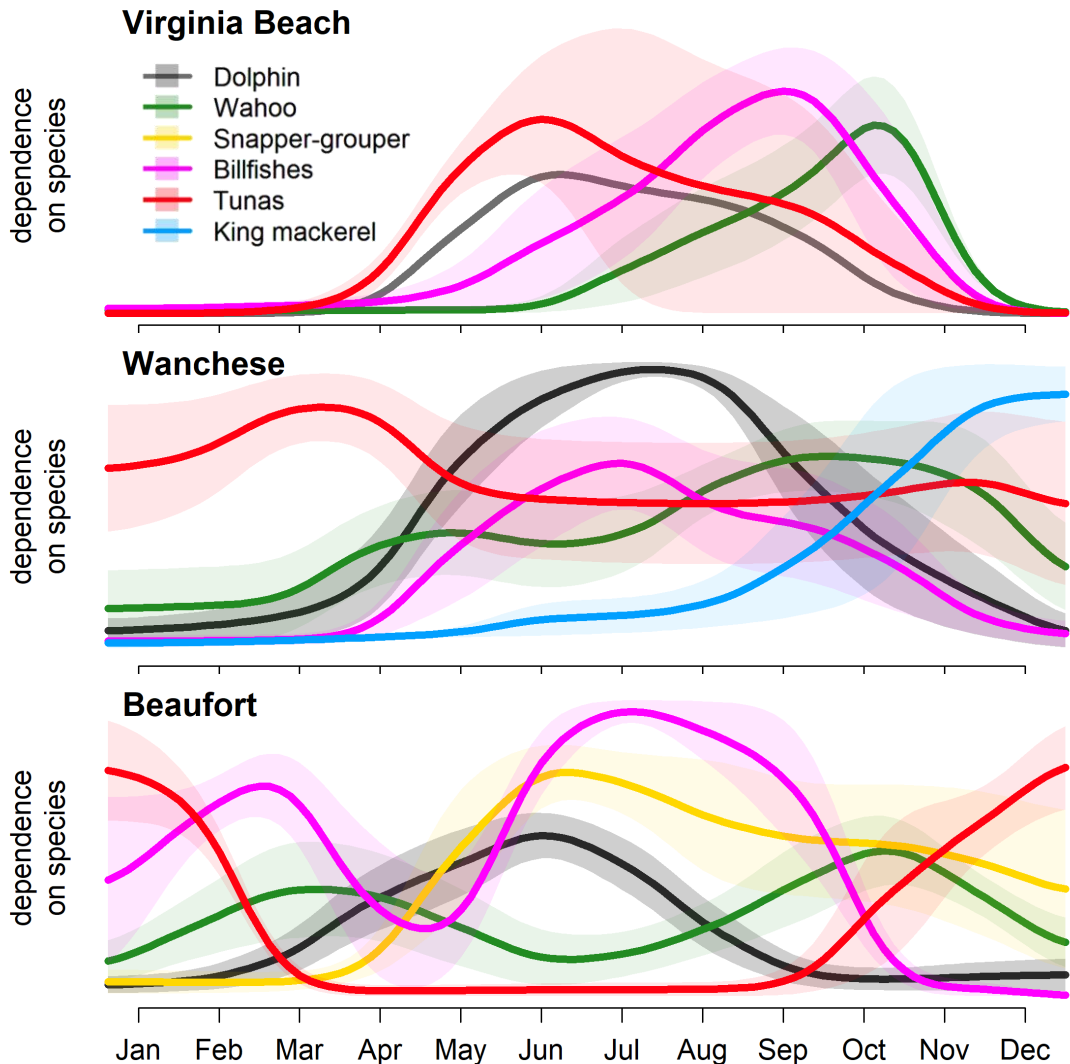


# Commerical conceptual model



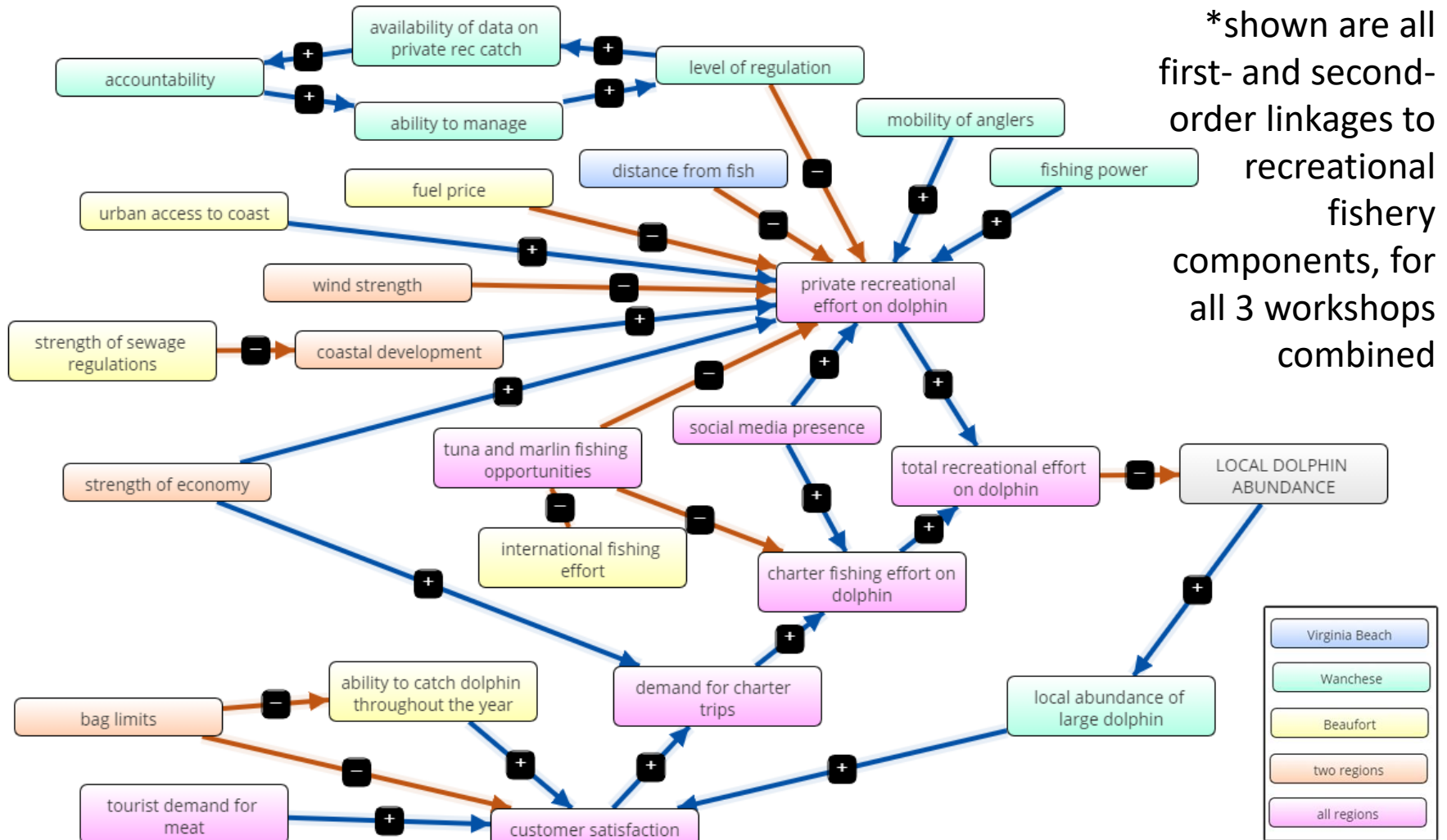
# Which species do your businesses depend on throughout the year?

- High variation across regions
- Later arrival of dolphin and wahoo moving north
- High dependence on dolphin in Wanchese during summer months

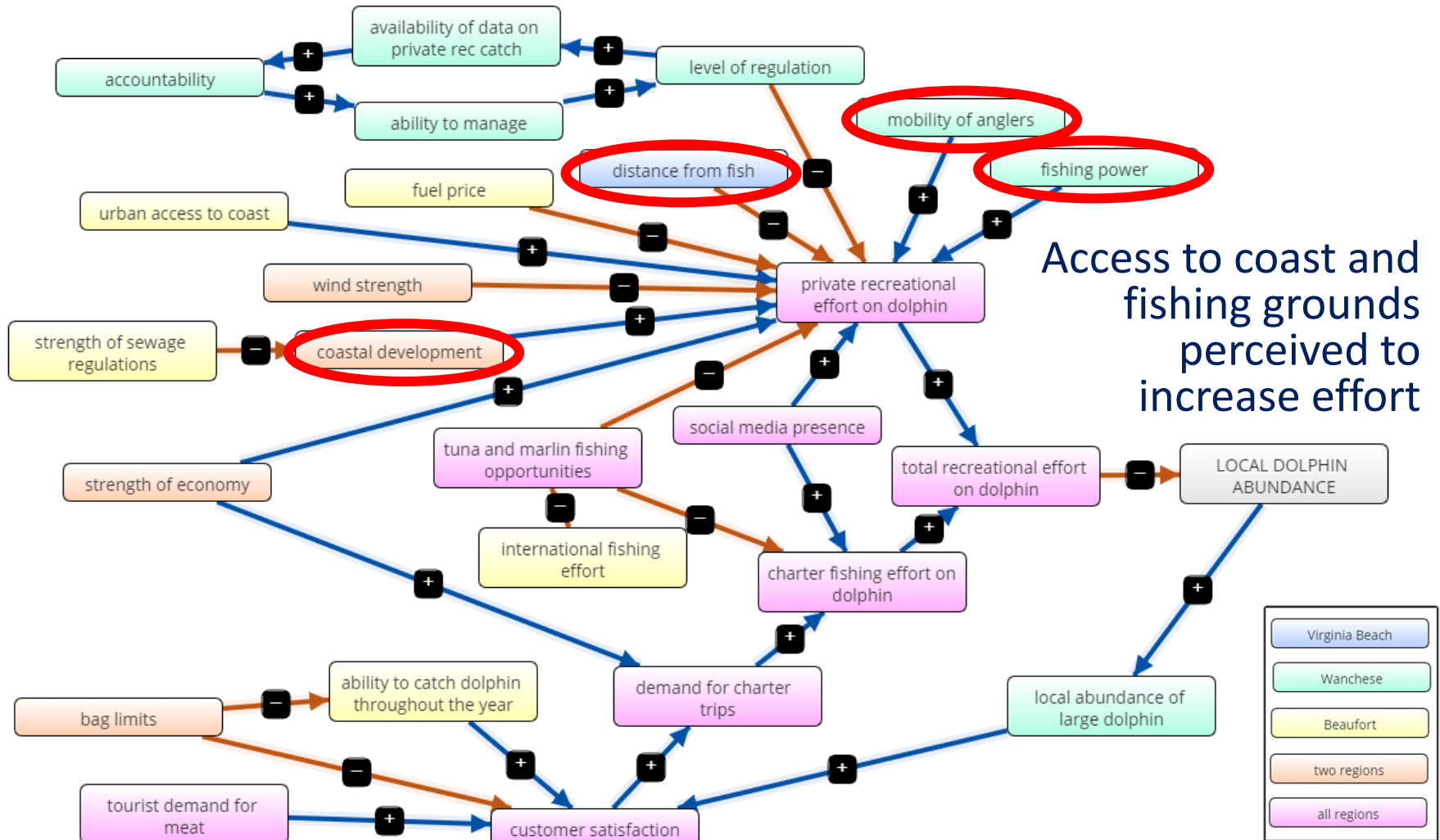




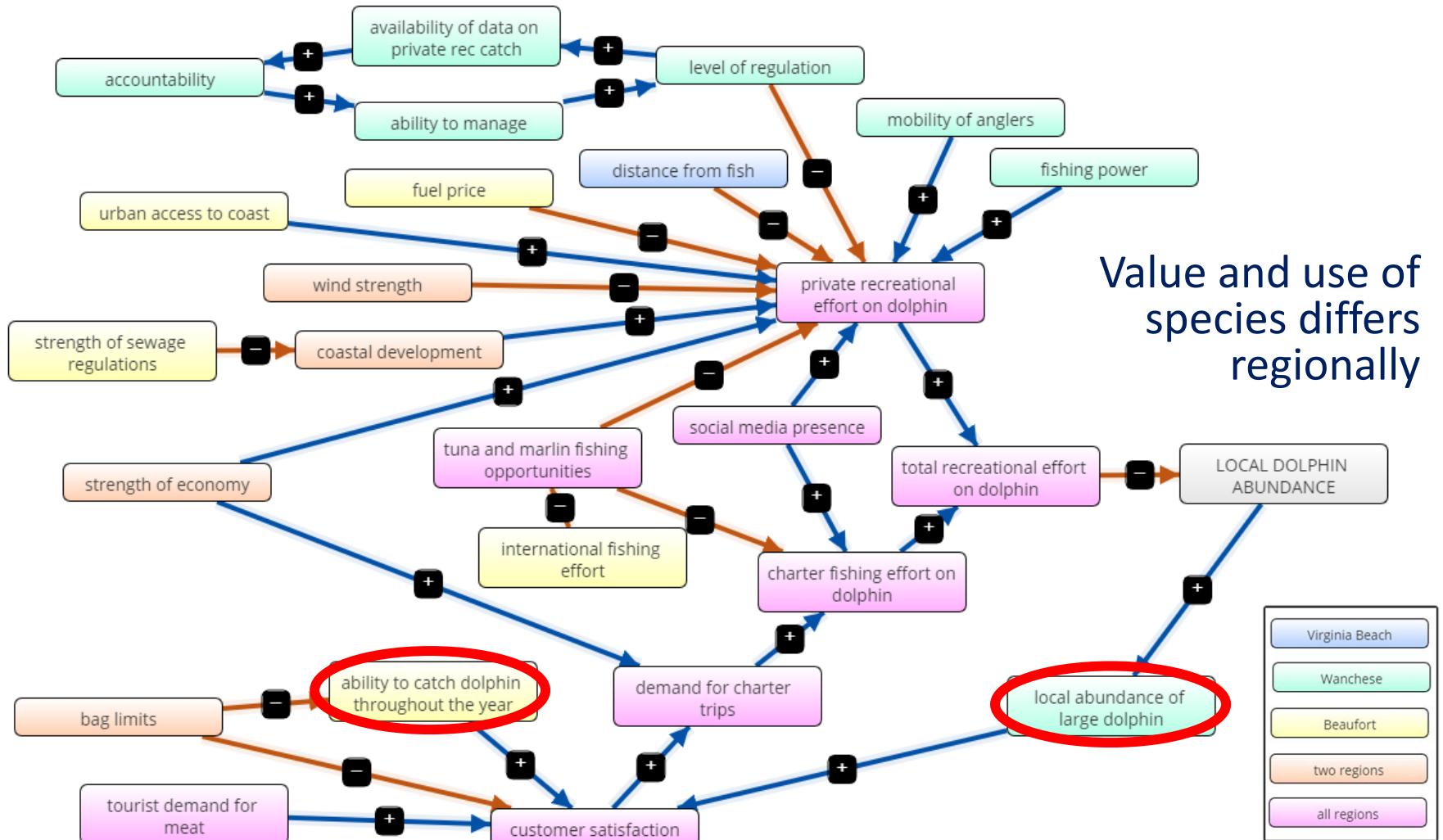
# Recreational conceptual model



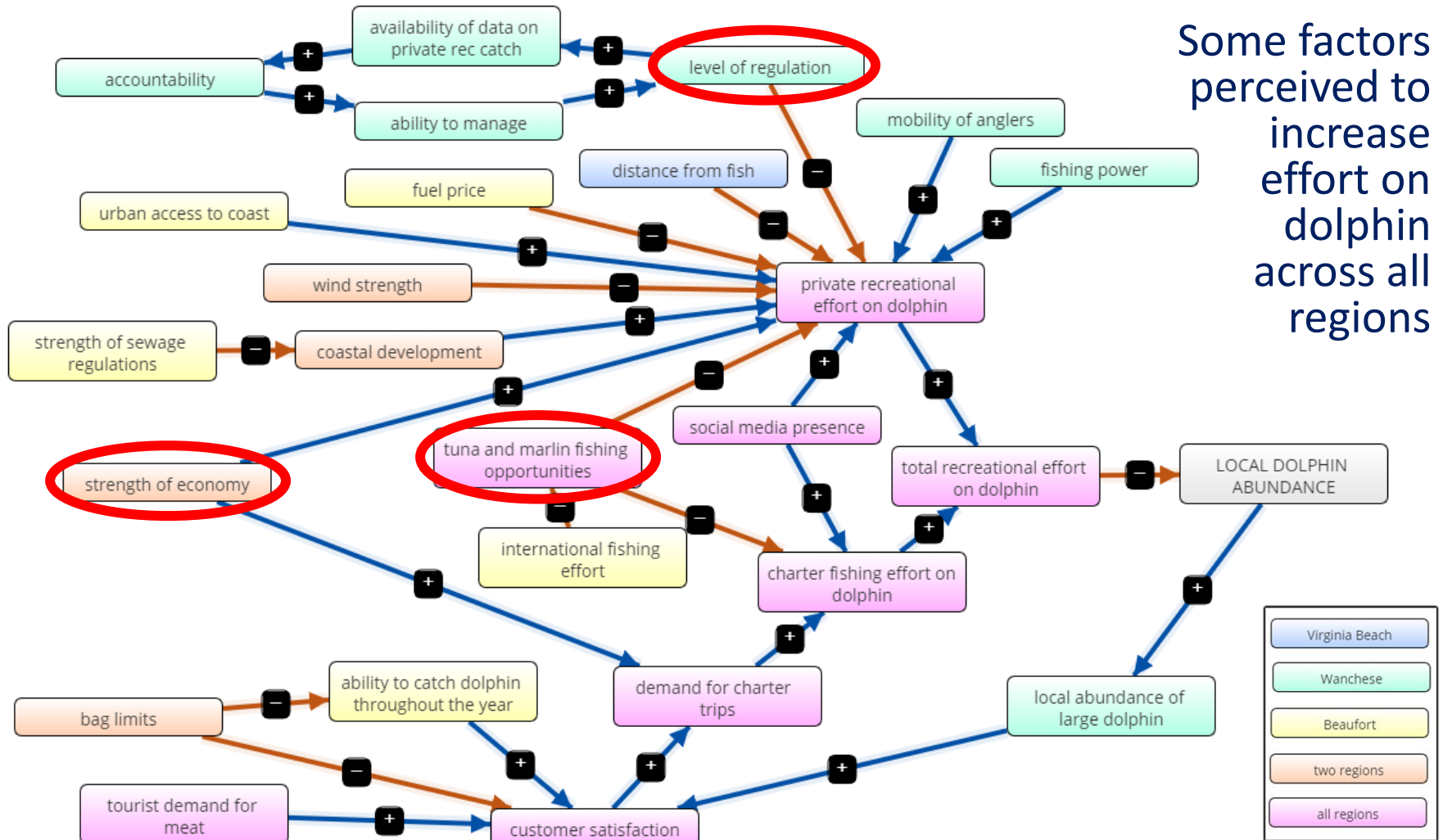
# Recreational conceptual model



# Recreational conceptual model



# Recreational conceptual model





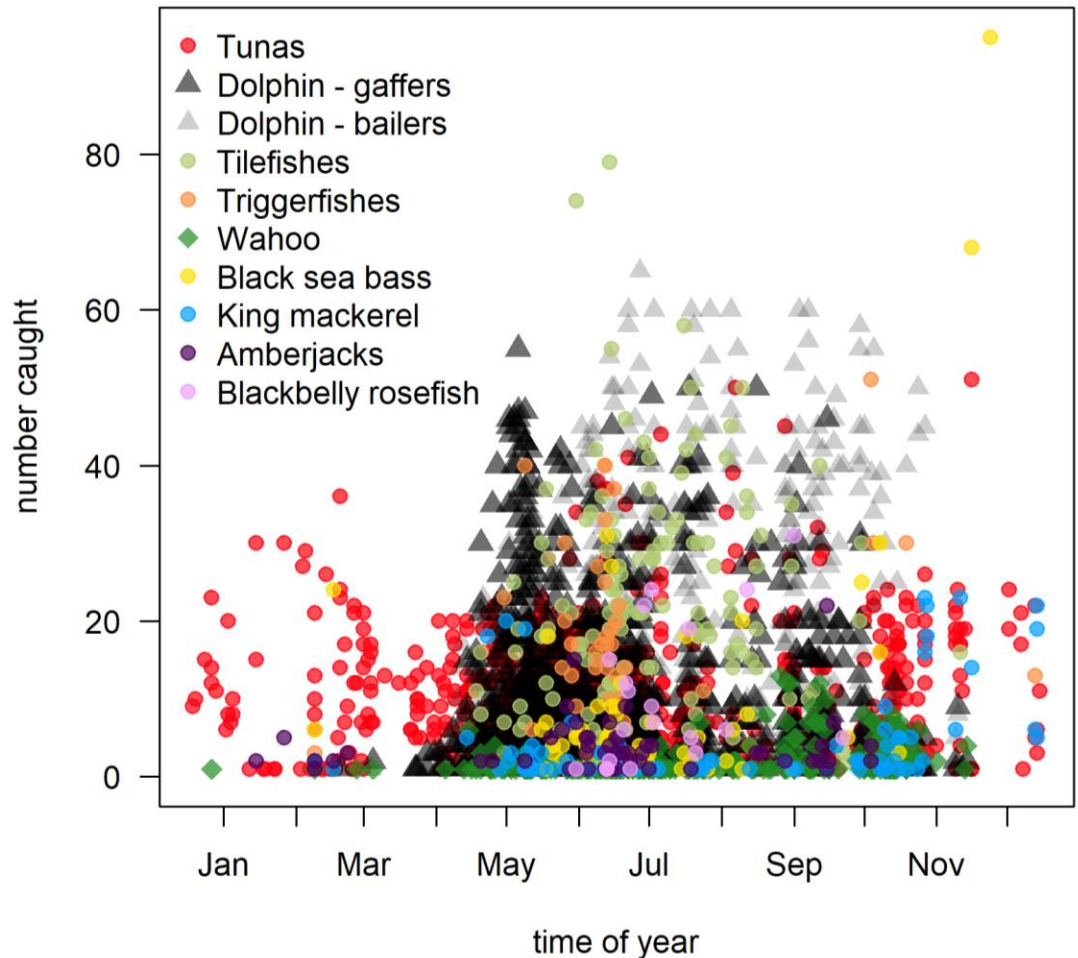
# Analysis of social media photos

- How representative are the perspectives of the workshop participants?
- How do charter operations vary across the region?

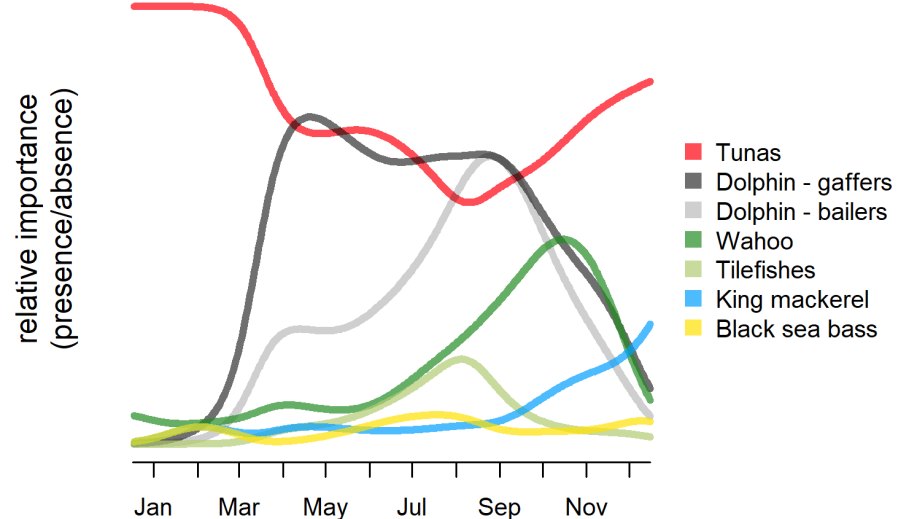
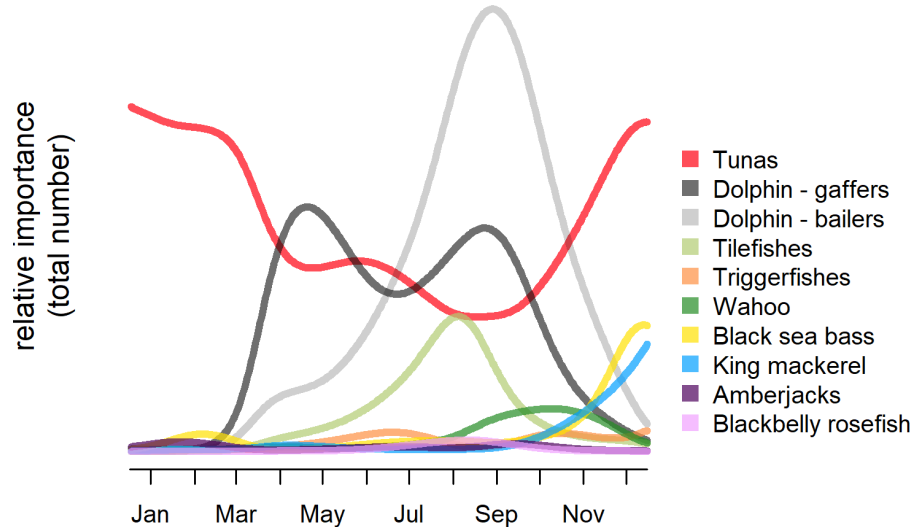
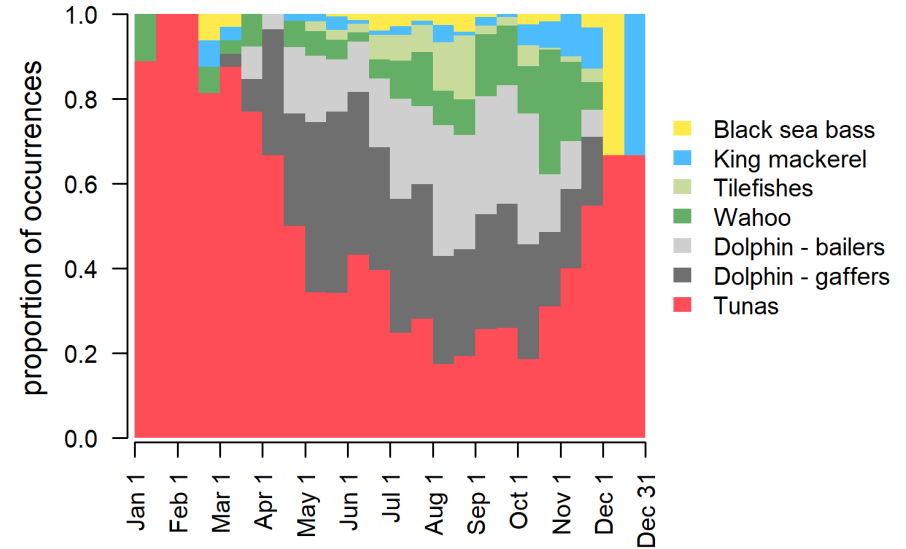
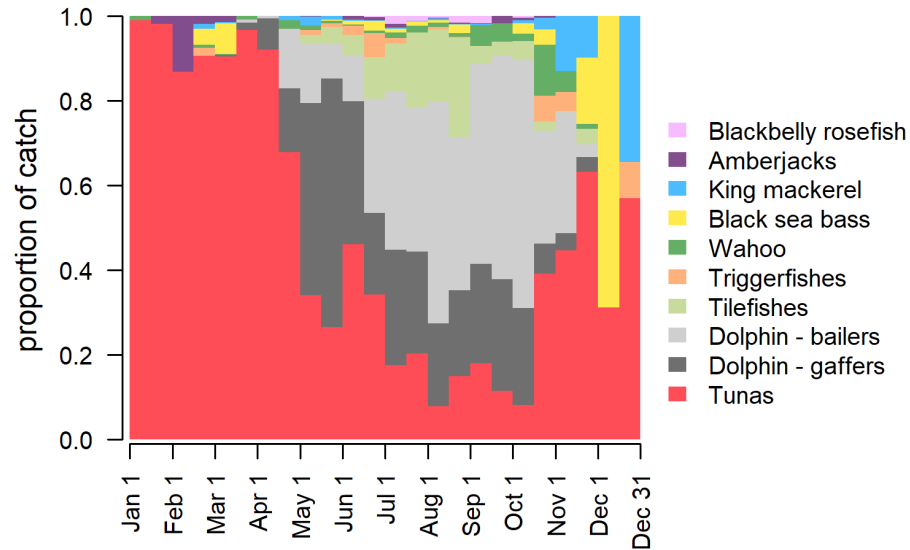


# Analysis of social media photos

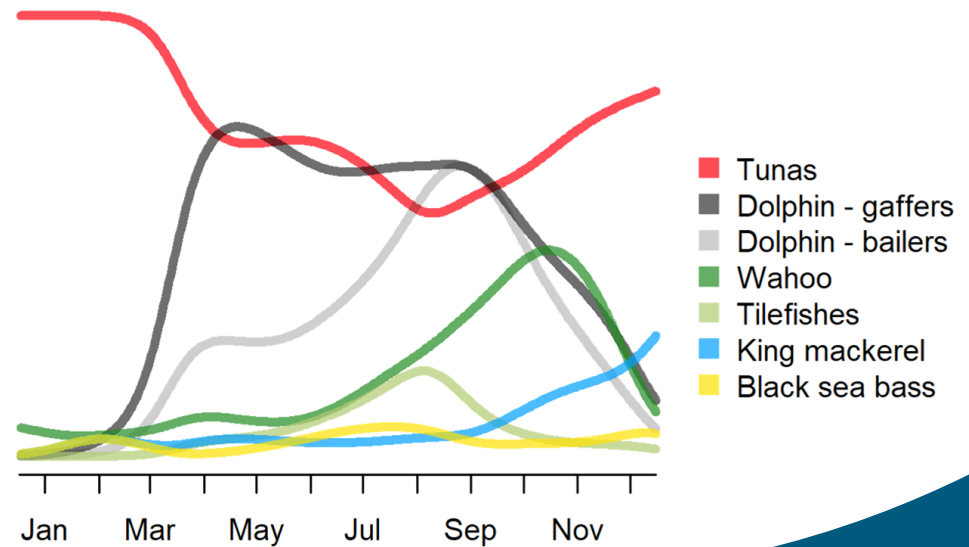
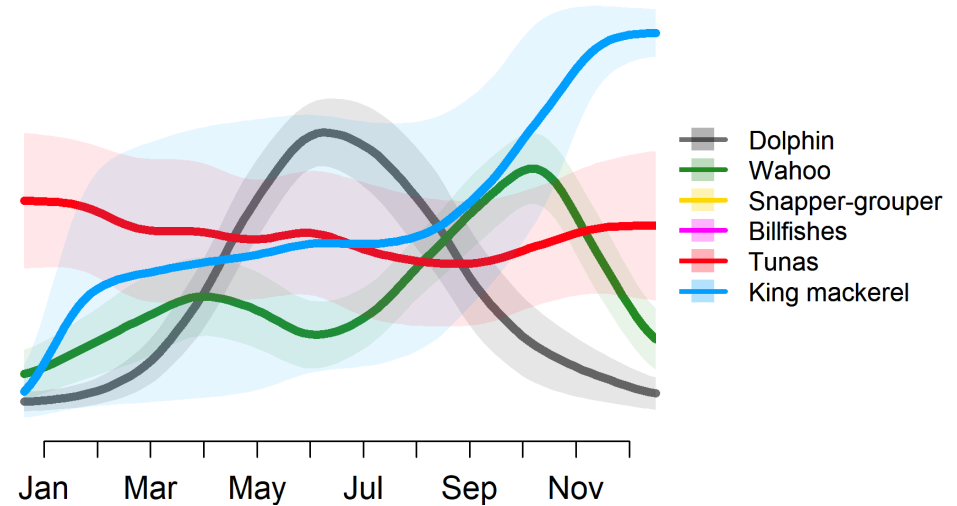
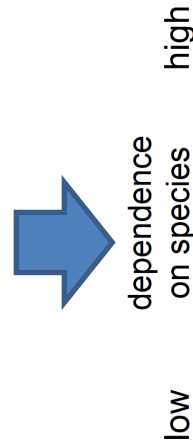
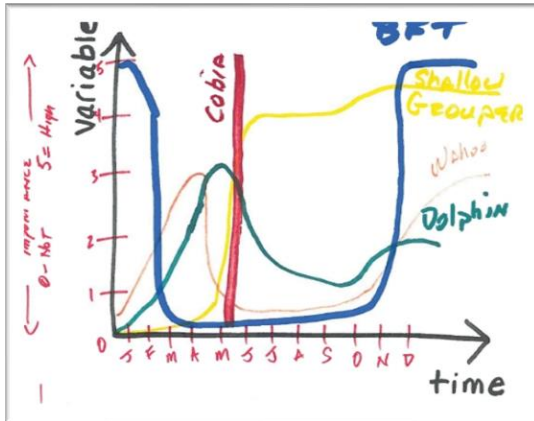
1,864 photos  
—Morehead (39)  
—Hatteras (419)  
—Wanchese (1,133)  
—Virginia Beach (273)  
38,936 fish  
19 species or  
species groups



# Seasonal trends - social media

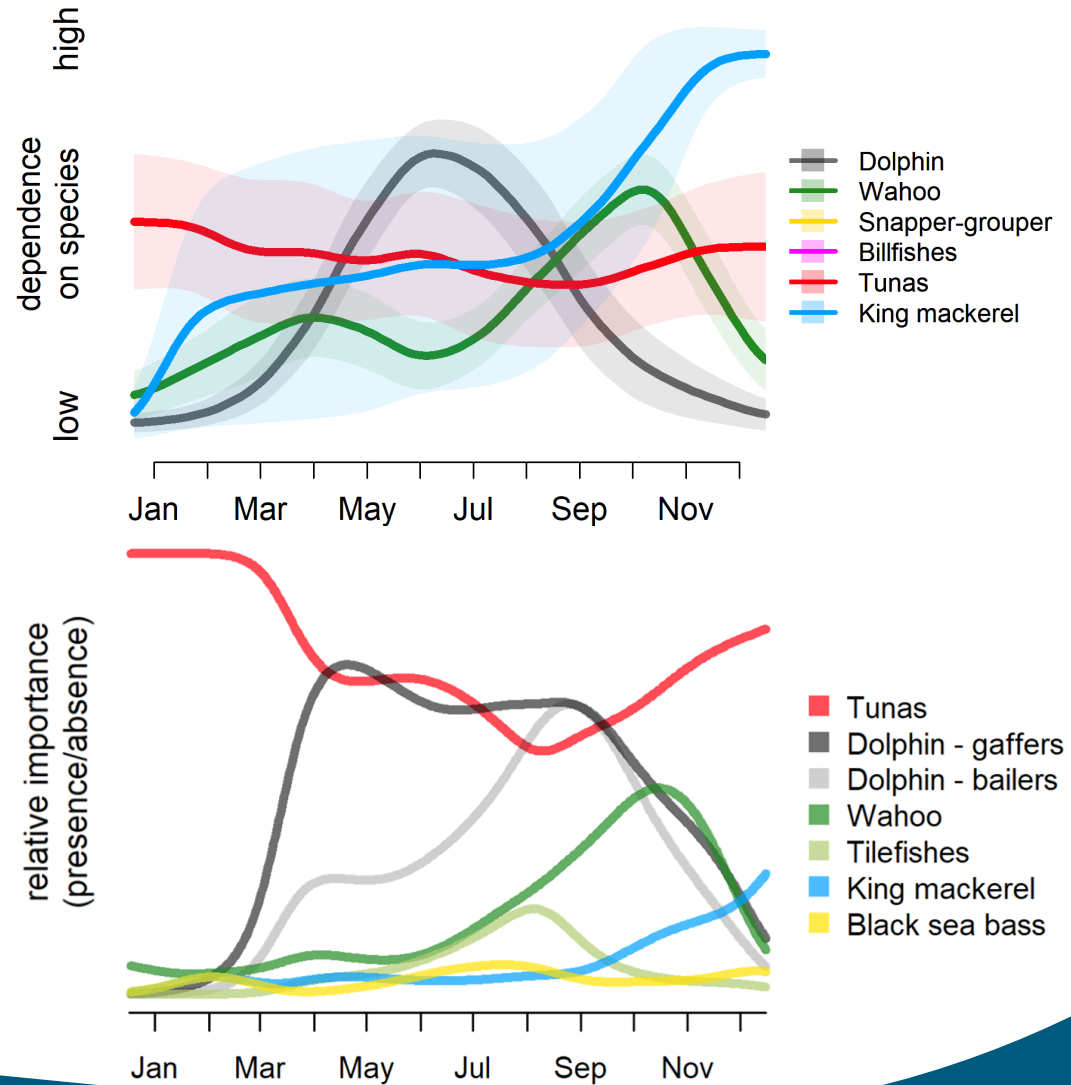
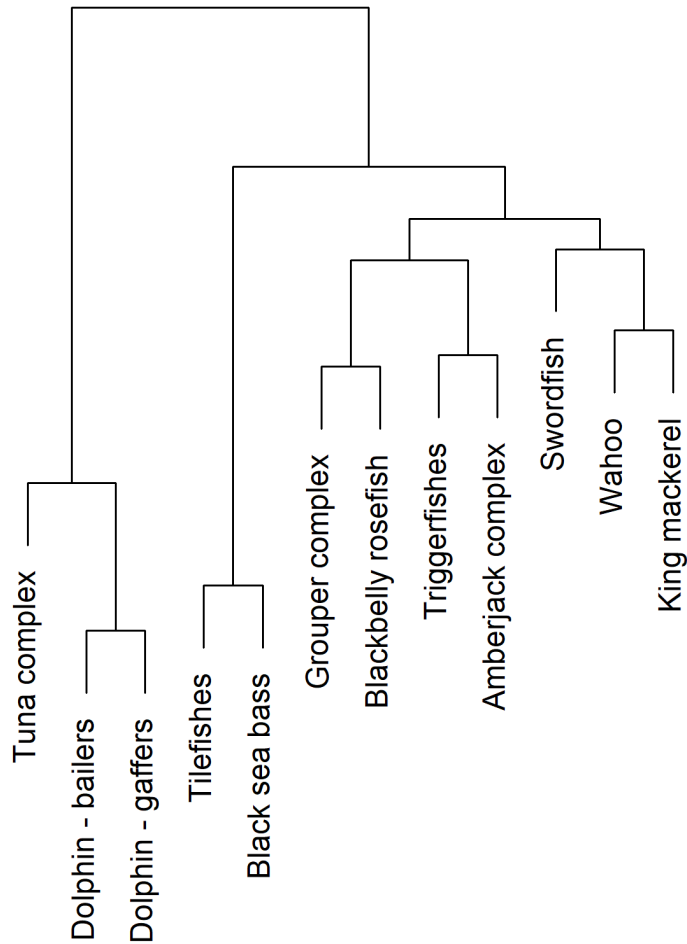


# Workshop input vs. social media





# Workshop input vs. social media



# Summary

Factors influencing usage of dolphin and wahoo:

Recreational	Commercial
Accessibility of fishing grounds	Shark abundance
Seasonal importance, value of particular size classes	Cost/difficulty of entry into fishery
Availability of other target species	Availability of other target species
Strength of economy	

- Most factors are highly variable in space and time
- Factors may act synergistically and can lead to high concentration of effort and local depletion at small scales, even if overall effort or catch has not increased



# Emerging Themes

- Dolphin vs. wahoo: same fishery participants but large differences between species
- Overall, relatively little discussion of wahoo
- No clear hypotheses regarding overall stock drivers and abundance patterns
- Importance of social and economic considerations for management
- Concerns about accountability, particularly regarding overall recreational effort, in all areas



# Emerging Themes - Dolphin

- Within small geographic range there is large variation in role of species in the fishery
- Impact of dolphin bag limits on consumer satisfaction (meat vs. sport fishing)
- Dependence of different size classes (gaffers vs. bailers) variable across area and sector
- Perception of localized depletion at small scales
- Perception of increased private recreational effort on dolphin, accountability concerns





# Next Steps

- Conceptual modeling in South Florida when travel restrictions are lifted  
(How do folks feel about workshops at this time?)
- More in-depth analysis forthcoming
- Final report for Council

