



**NOAA**  
**FISHERIES**

# SEDAR 78 Spanish Mackerel: 2020 MRIP Data Update

Prepared for SAFMC SSC meeting  
October, 2022

SEFSC/SFD/AFB

Received notice of updated MRIP estimates on Oct. 17, 2022. Re-estimated times series on Oct. 18, 2022

The main Spanish Mackerel changes in landings:

2020W5, EFL, SH:

State Territorial Sea: from 2327 to 223812 (+221K)

Inland: from 1297439 to 484547 (-813K)

2021W2, EFL, SH

State Territorial Sea: from 2536976 to 1220303 (-1.3M)

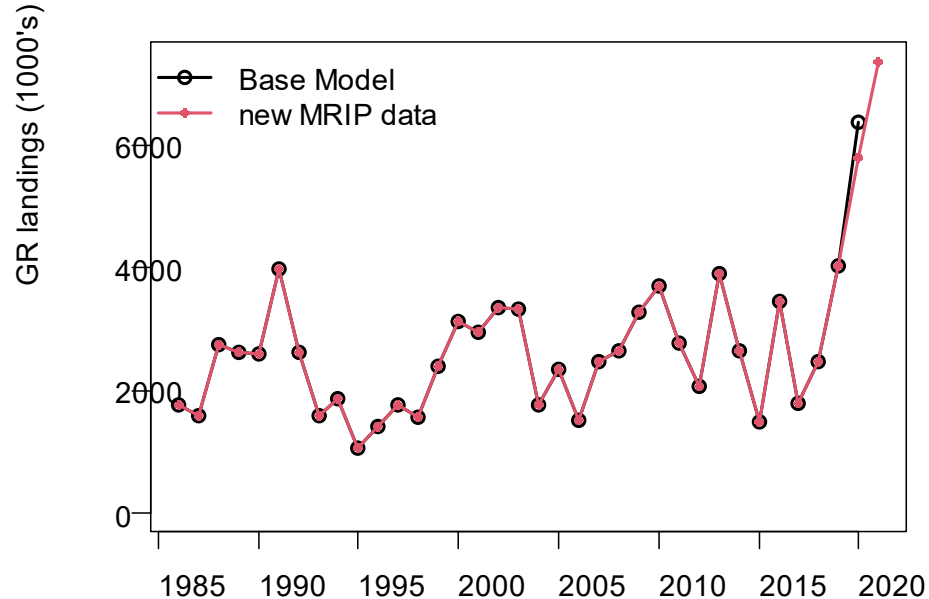
Inland: from 82423 to 175438 (+93K)

Re-ran base SEDAR 78 Spanish Mackerel stock assessment model on Oct. 19, 2022. Due to time constraints, we were unable to re-run the MCBE and projection analyses, nor generate a new report.

# Time series of general recreational (GR) removals (landings and dead discards).

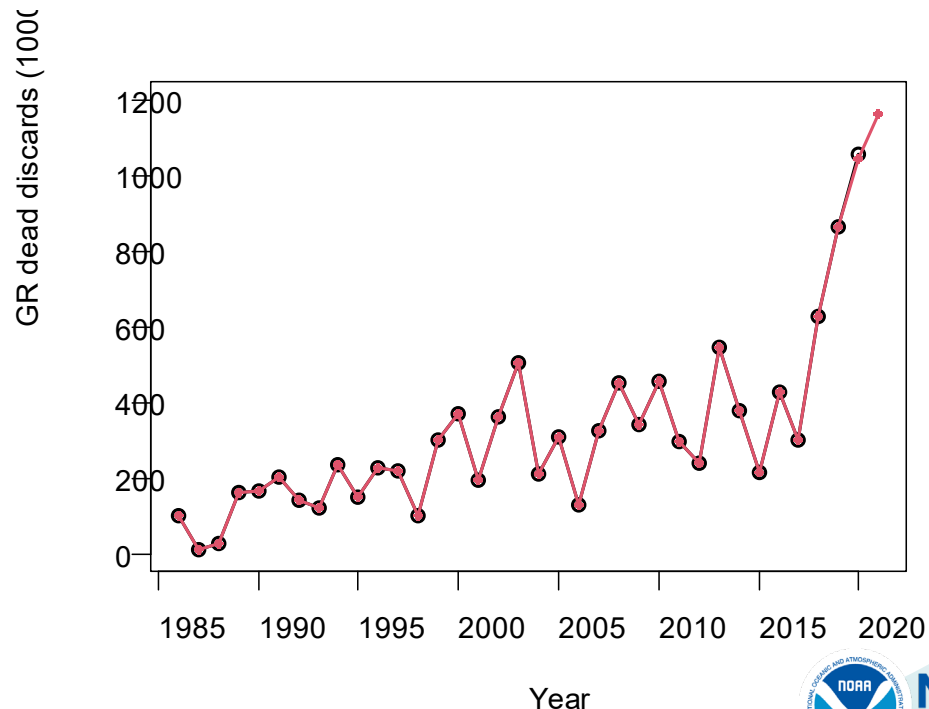
## Base Model:

SEDAR 78 Spanish Mackerel base stock assessment model input with old 2020 MRIP data



## new MRIP data:

SEDAR 78 Spanish Mackerel base stock assessment model input with new updated 2020. 2021 data shown for comparison purposes – not included in updated model run.



*\*note that 2021 GR data includes a 3 year average from 2018-2020 from the Headboat sector, which accounts for about 0.1% of total GR removals.*

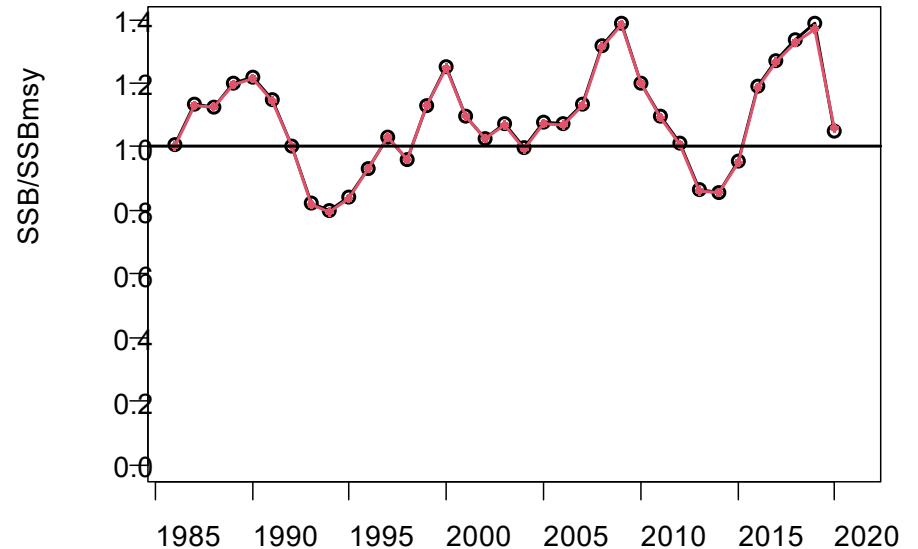
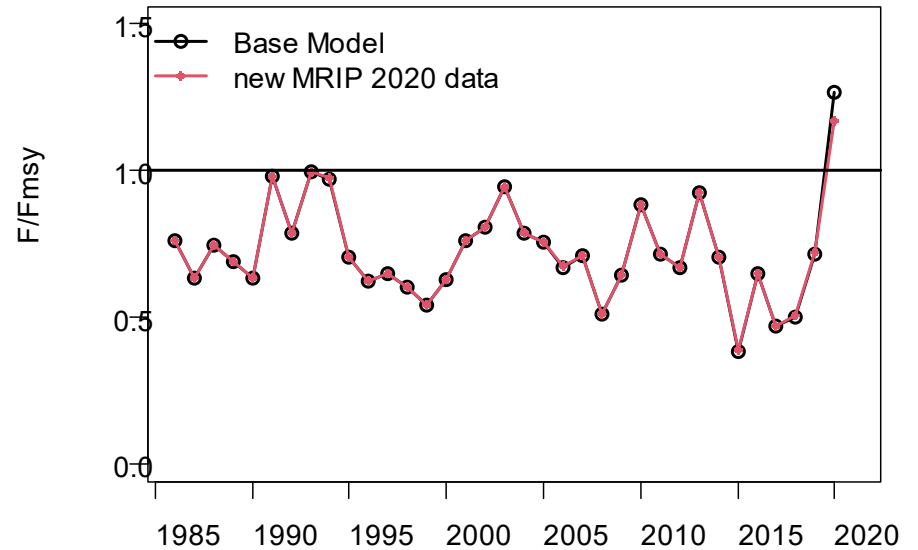
# Time series of stock status indicators.

## Base Model:

SEDAR 78 Spanish Mackerel base stock assessment model with old 2020 MRIP data.

## new MRIP data:

SEDAR 78 Spanish Mackerel base stock assessment model with new updated 2020 data.



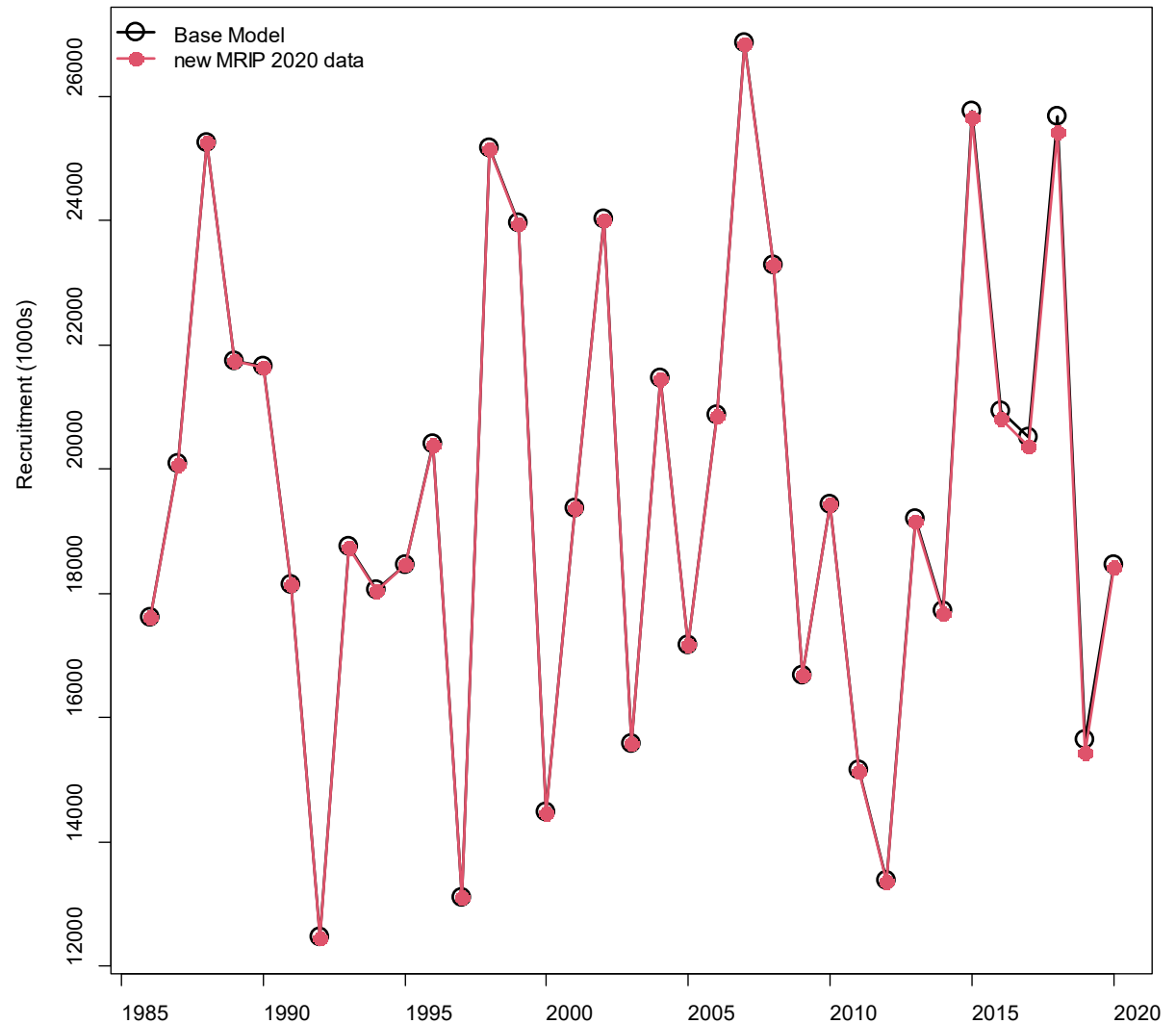
# Time series of recruitment.

## Base Model:

SEDAR 78 Spanish Mackerel base stock assessment model with old 2020 MRIP data.

## new MRIP data:

SEDAR 78 Spanish Mackerel base stock assessment model with new updated 2020 data.



# Reference point values

Base Model:

SEDAR 78 Spanish Mackerel base stock assessment model with old 2020 MRIP data.

new MRIP data:

SEDAR 78 Spanish Mackerel base stock assessment model with new updated 2020 data.

Quantity	Units	Base Model	new MRIP data
R0	1000's	21939	21898
F <sub>M<sub>SY</sub></sub>	1/y	0.5161	0.5165
F <sub>30%</sub>	1/y	0.6076	0.6100
B <sub>M<sub>SY</sub></sub>	metric tons	19588.3	19586.5
SSB <sub>M<sub>SY</sub></sub>	metric tons	6405.9	6411.8
MSST	metric tons	4804.4	4808.8
MSY	1000 lb	8210.2	8180.4
F <sub>(2018-2020)/F<sub>M<sub>SY</sub></sub></sub>	-	0.768	0.752
SSB/MSST	-	1.400	1.408



# Questions?

