

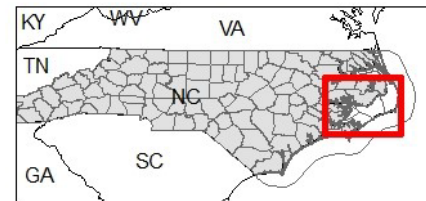
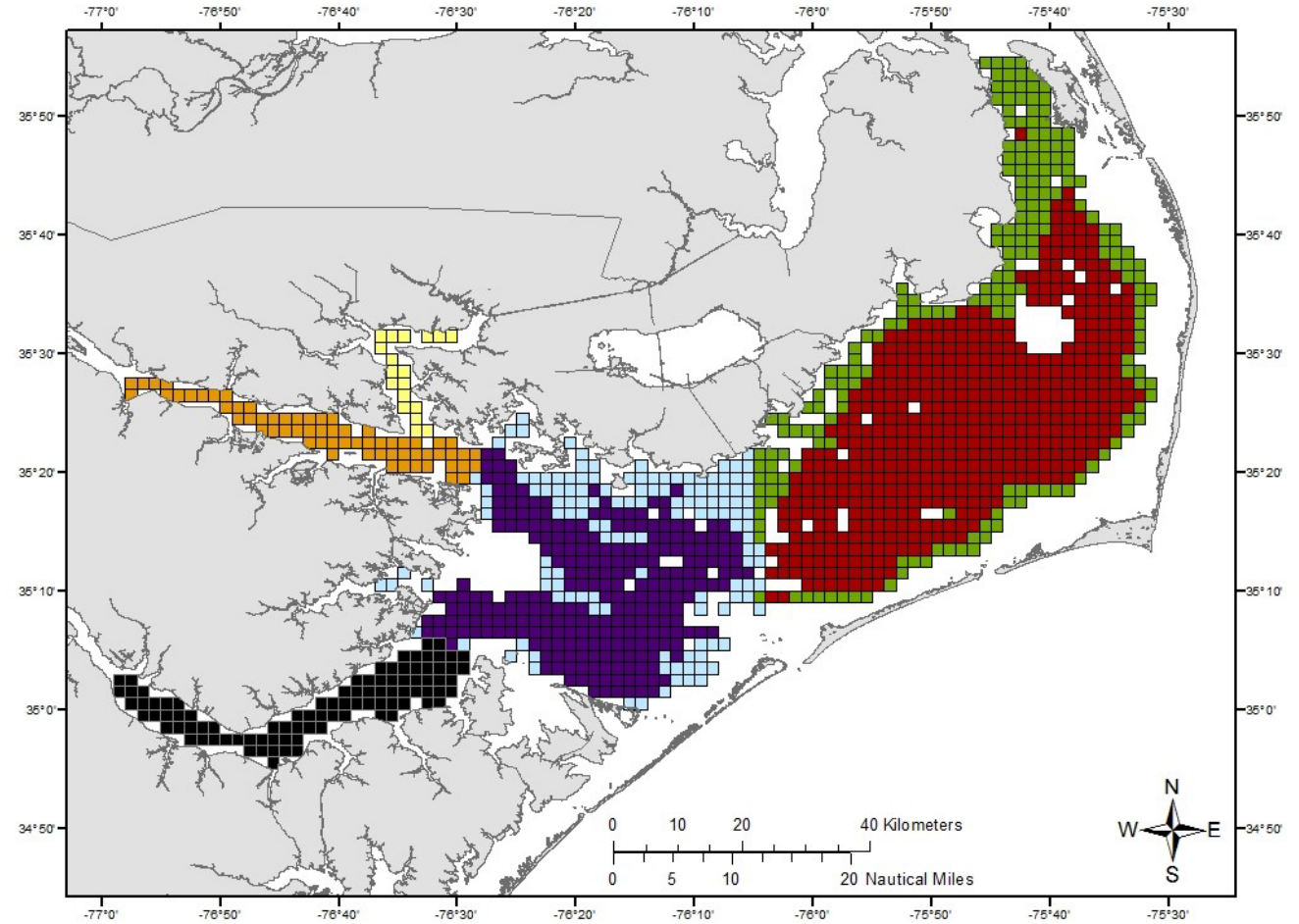
A complex network diagram with various sized nodes (black, blue, and grey) connected by thin grey lines. Some nodes are highlighted with larger circles. The background is light blue with faint circular patterns.

SEAMAP-SA DATA MANAGEMENT

Current and Future Online Data Systems
Dr. Tracey Smart and C. Michelle Willis
South Carolina Dept. of Natural Resources
smartt@dnr.sc.gov, willisc@dnr.sc.gov

SURVEYS INCLUDED

- Coastal Trawl Survey (SCDNR)
- Pamlico Sound Survey (NCDMF)
- Coastal Longline Survey (GADNR, SCDNR, NCDMF)
- Southeast Reef Fish Survey (SCDNR & SEFSC)



Pamlico Sound Survey Strata

- | | |
|------------------------------------|------------------------------------|
| ■ Neuse River (NR) | ■ Pamlico Sound Shallow West (PSW) |
| ■ Pamlico Sound Deep East (PDE) | ■ Pamlico River (PR) |
| ■ Pamlico Sound Deep West (PDW) | ■ Pungo River (PUR) |
| ■ Pamlico Sound Shallow East (PSE) | |

TARGETED DATA PRODUCTS

Abundance & Biomass by Species

Multispecies Downloads

Length Frequency

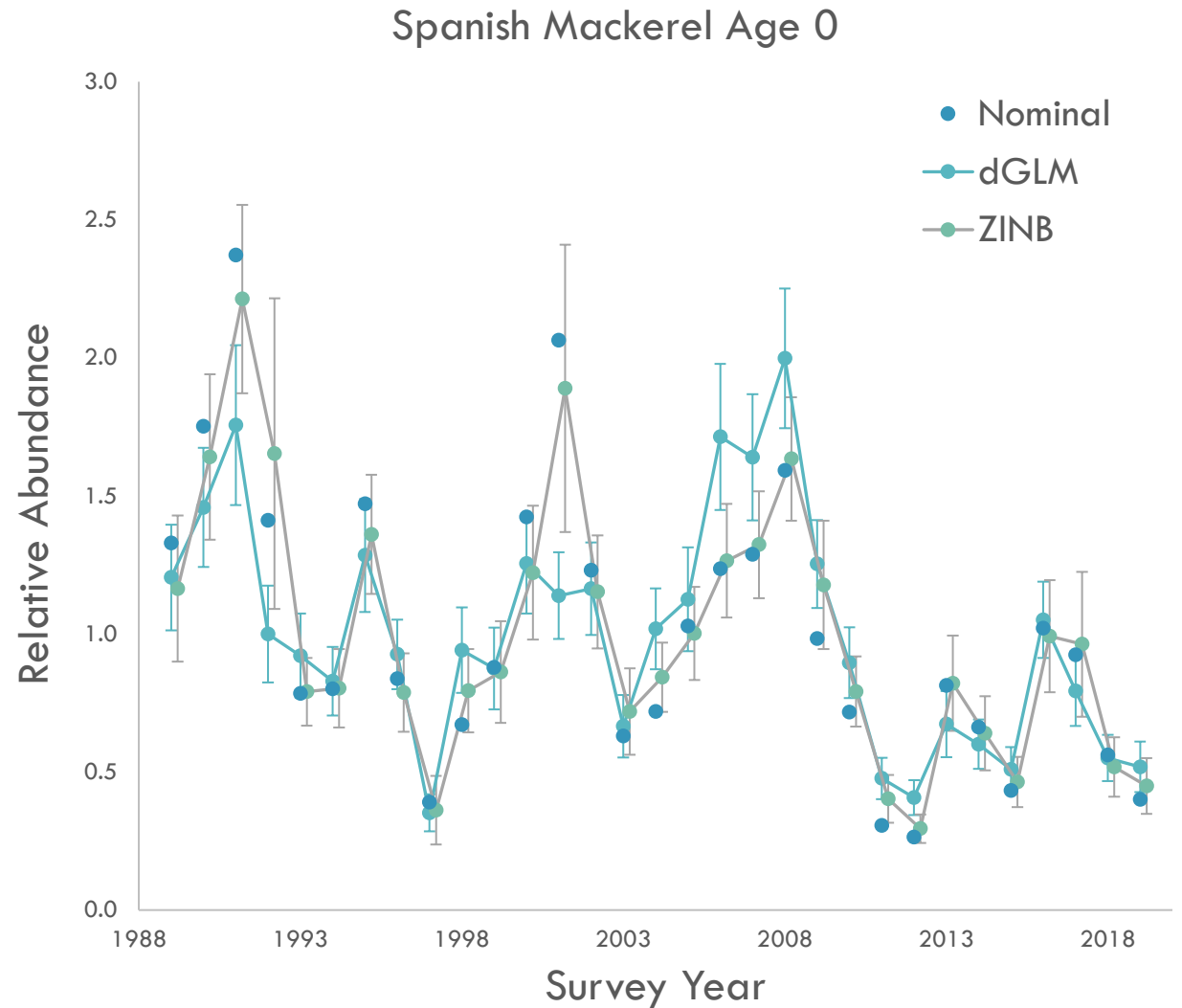
Life History (age, repro, etc.)

New Data System:

Tagging

Sea Turtles

Diet



SEAMAP-SA ONLINE DATABASE

Iteration 1 (Active)

Developed and maintained by SCDNR IT

All funded SEAMAP-SA Surveys

One shared structure

Administrator Interface for data & code
table importation & deletion

User-driven queries by Survey and Data
Type

Metadata on SEAMAP.org

User tracking

Type of Data:
Choose Data to Download [Data Types](#)
Choose Data to Download
Event Information
Abundance and Biomass
Length Frequency
Individual Specimen
Tagging Information
no selected option 32 available options
1989
1990
1991

States:
no selected option 4 available options
FL
GA
NC

Latitude Range:
no selected option 428 available options
28.75
28.76
28.77

Seasons:
no selected option 3 available options

SEAMAP-SA ONLINE DATABASE

Iteration 2 (Under Development)

Developed and maintained by Axiom DS

Hosted within SECOORA Data Portal

All funded SEAMAP-SA Surveys

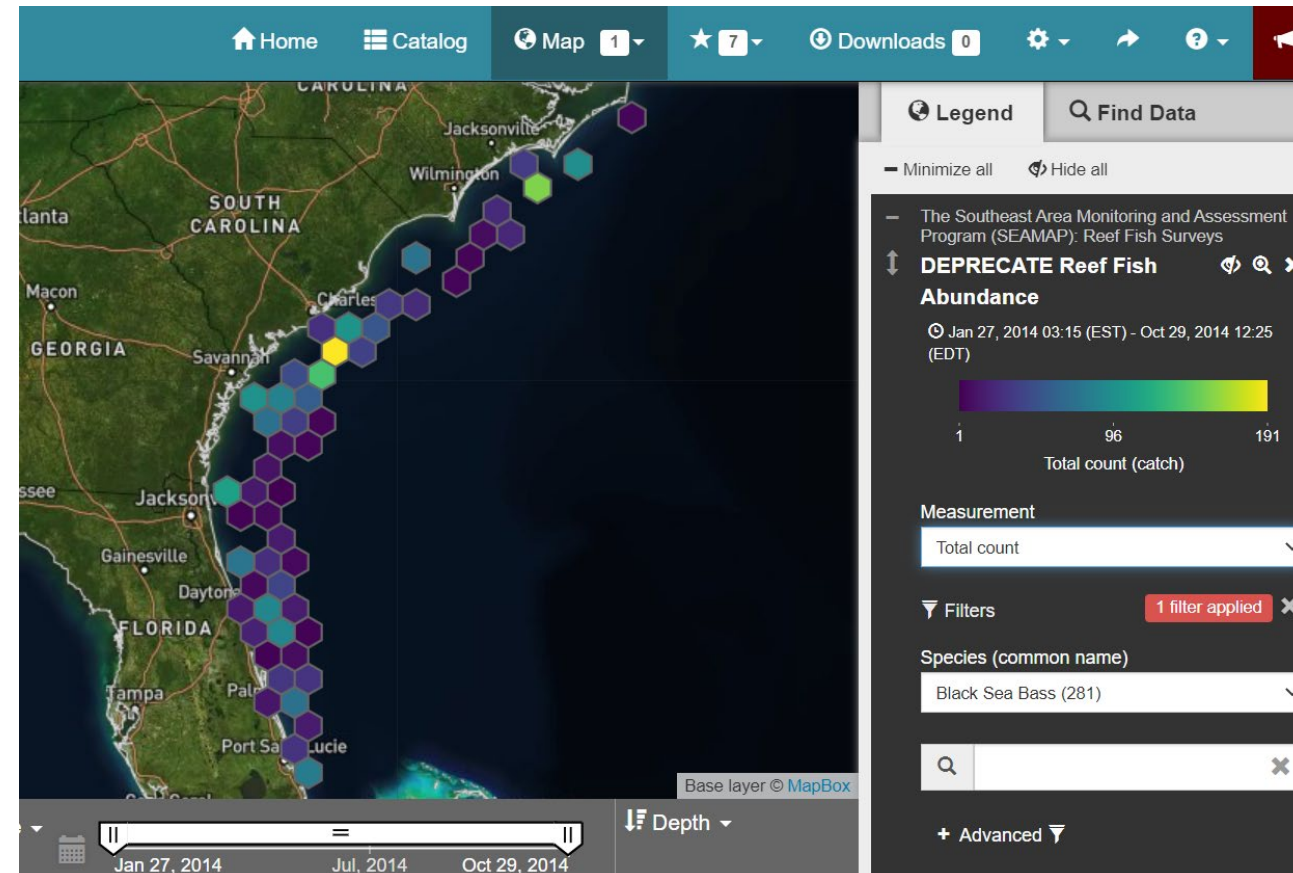
Administrator Interface for data & code table importation & deletion

User-driven queries by Survey and Data Type

User-driven data summaries and comparisons among SEAMAP-SA Surveys & other SECOORA data

Metadata zipped with data download

User tracking



WHY MIGRATE?

SECOORA mostly physical data
limited biological data

Capabilities:

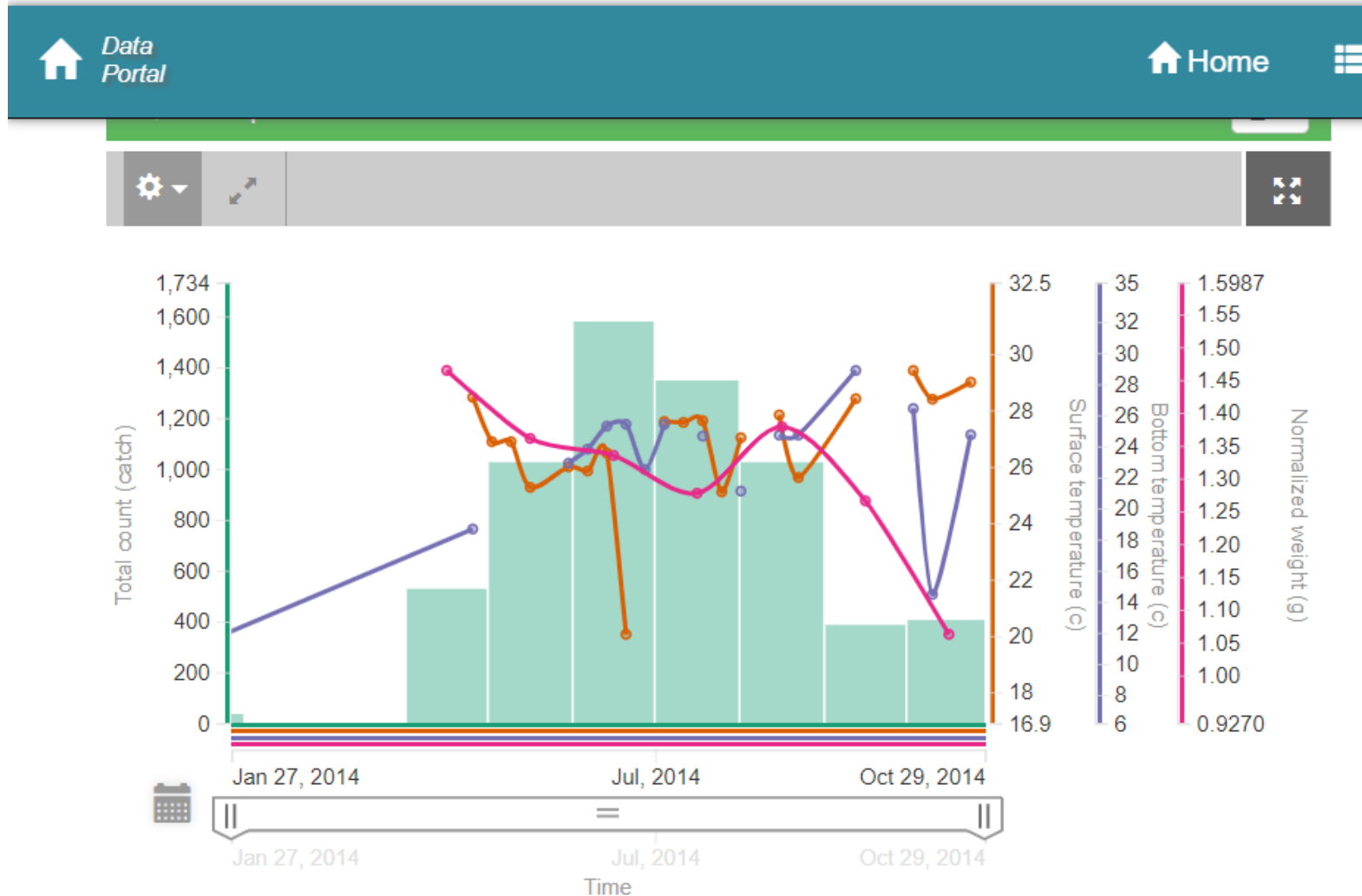
summarization

visualization

mapping

download raw data

cross comparison of data sets



DATA PROCESSING RESPONSIBILITIES

Each survey maintains and provides their data annually (Spring)

- Queries or programs to translate to SEAMAP-SA formats

SCDNR checks format data for online system compatibility

SCDNR uploads and imports into online system

SCDNR deletes and replaces as needed for corrections

Metadata:

Each survey provides updates as needed to SCDNR/ASMFC for website
(or download package in new system)



CHALLENGES

Ownership and Branding

Responsibility for Updates

Programmers in Demand