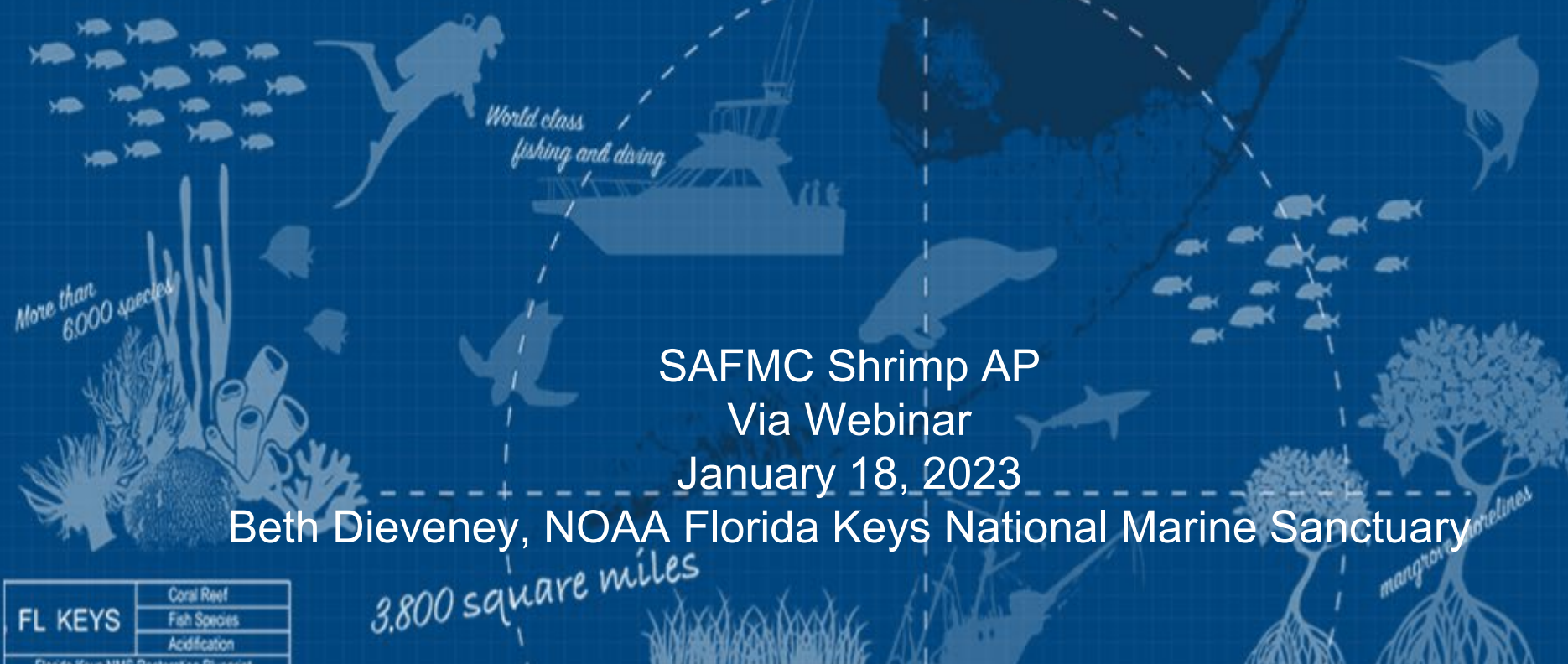




FLORIDA KEYS NATIONAL MARINE SANCTUARY RESTORATION BLUEPRINT



SAFMC Shrimp AP
Via Webinar
January 18, 2023

Beth Dieveney, NOAA Florida Keys National Marine Sanctuary

| | |
|----------------------------------------|---------------|
| FL KEYS | Coral Reef |
| | Fish Species |
| | Acidification |
| Florida Keys NMS Restoration Blueprint | |



Presentation Outline

- Why Create a Restoration Blueprint
- Proposed Rule highlights specific to South Atlantic Fishery Management Council comment letter and authorities
 - Sanctuary boundary
 - Sanctuary-wide regulations
 - Marine zones & associated regulations
- Socio-Economic Analysis
- Management Plan
- Public outreach products and tools



Economic Impact of Visitors

A Healthy Florida Keys Ecosystem Provides:

\$2.9 Billion

in tourism spending*

44%

of Jobs
(Highest percentage in FL)**

60%

of Monroe County economy**



*Gazal, Andrew & Burns/2021

**TBD Economics/2019

Blue Economy of the Keys



Tourism

5.3 million visitors in 2019

Boating

4.5 million boaters per annum

Diving and Snorkeling

1.86 million divers and snorkelers per annum

Commercial Fishing

79% of the catch from the sanctuary is processed in Monroe County

Recreational Fishing

2.7 million people fish in FKNMS each year





NATURAL RESOURCES IN THE FLORIDA KEYS

The Future of the Keys Marine Environment is at Risk

Office of National Marine Sanctuaries
National Oceanic and Atmospheric Administration



Florida Keys

National Marine Sanctuary

CONDITION REPORT 2011



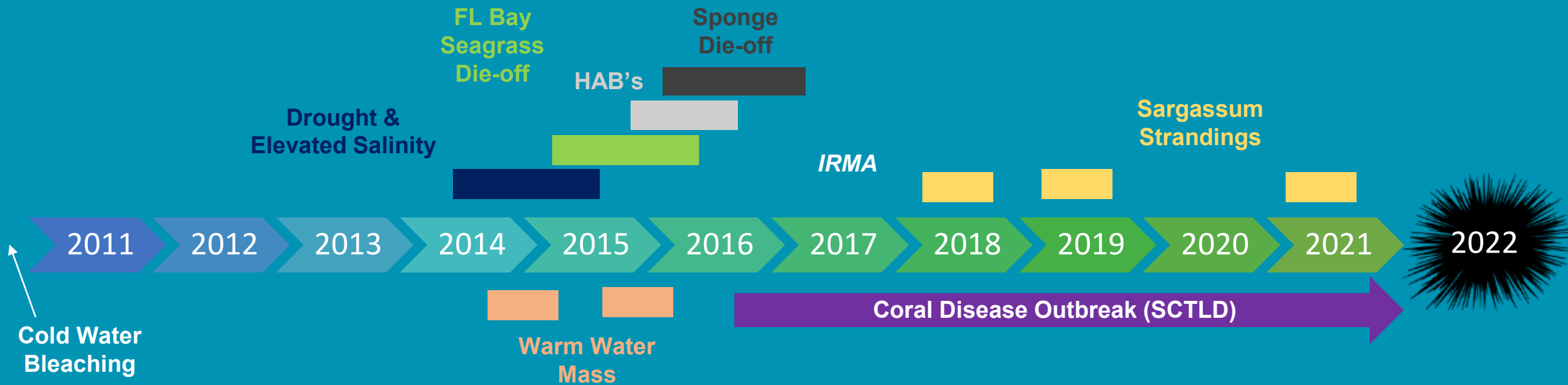
September 2011

17

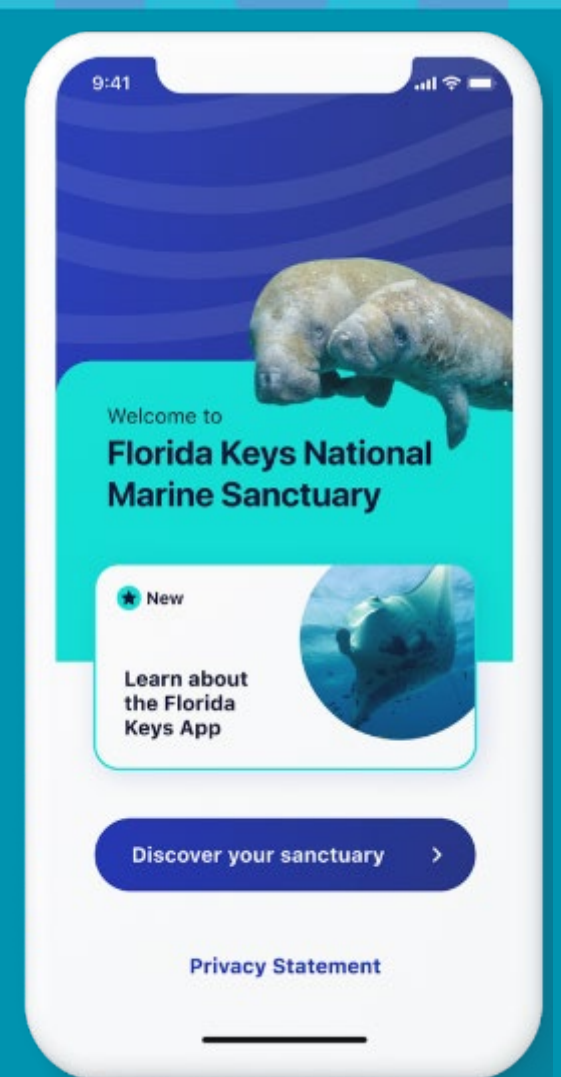
QUESTIONS

on the health of the ecosystem

Since 2011...



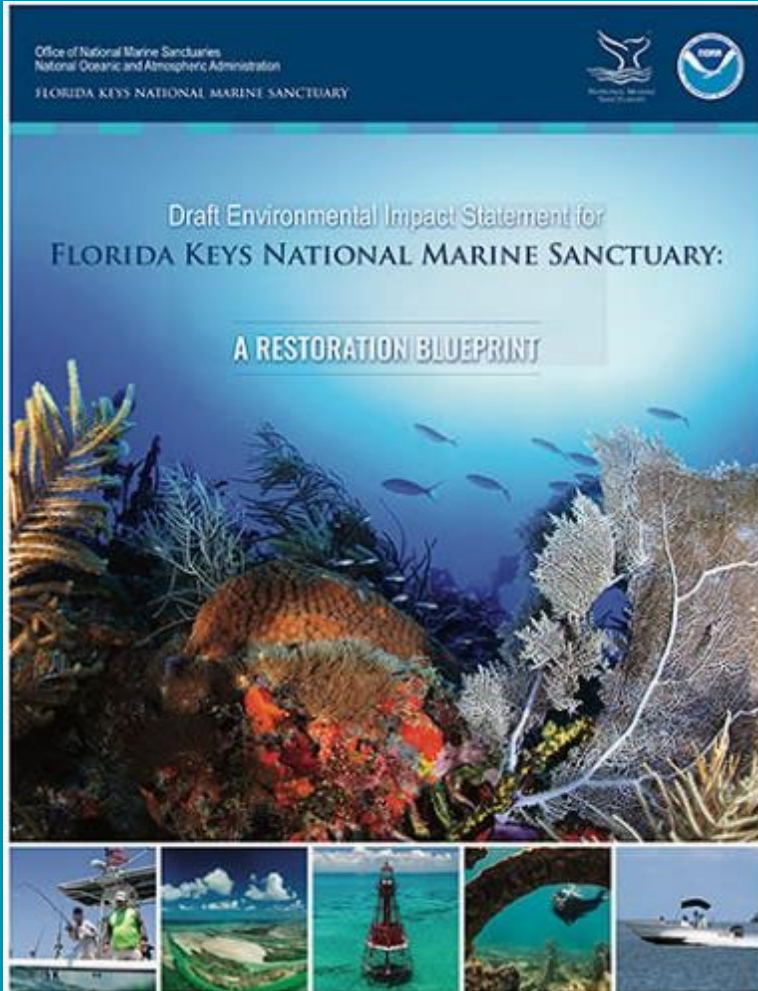
Local Action to Enhance Resilience





FLORIDA KEYS
NATIONAL MARINE
SANCTUARY

Notice of Proposed Rulemaking



Proposed regulations for:

- Sanctuary boundary
- Sanctuary-wide regulations
- Marine zones & zone-specific regulations

Proposed Rule is informed by:

- Public and agency comment
- Updated socio-economic and environmental data

Pulls from all four alternatives included in the Draft Environmental Impact Statement

*Management Plan is a separate document

SAFMC comment letter topics & FKNMS proposed rule content

| Topics in 2020 SAFMC comment letter | Included in the proposed rule |
|------------------------------------------------------------|--------------------------------------|
| <i>Spiny Lobster Fishery Management Plan, Amendment 11</i> | <i>Not included</i> |
| <i>Delta Shoal SPA</i> | <i>Not included</i> |
| <i>Key Largo Management Area - no anchor</i> | <i>Not included</i> |
| <i>New Large Contiguous Areas</i> | <i>Not included</i> |
| <i>FKNMS Live Rock Aquaculture permit</i> | <i>Not included</i> |

SAFMC comment letter topics & FKNMS proposed rule content

| Topics in 2020 SAFMC comment letter | Included in the proposed rule |
|------------------------------------------------------------------------------------------------------------------|--------------------------------------|
| Sanctuary boundary expansion & Tortugas South | Included |
| Temporary Regulation for Emergency & Adaptive Management | Included |
| Traditional Fishing definition and process for coordination | Included |
| Key Largo Dry Rocks-Grecian Rocks, Sombrero, and Alligator Reef SPAs, Tennessee Reef CA, coral restoration areas | Included |
| Baitfishing permits in Sanctuary Preservation Areas | Included |
| Water Quality and FKNMS role | Included in draft management plan |
| Impacts of climate change and coral disease | Included in draft management plan |



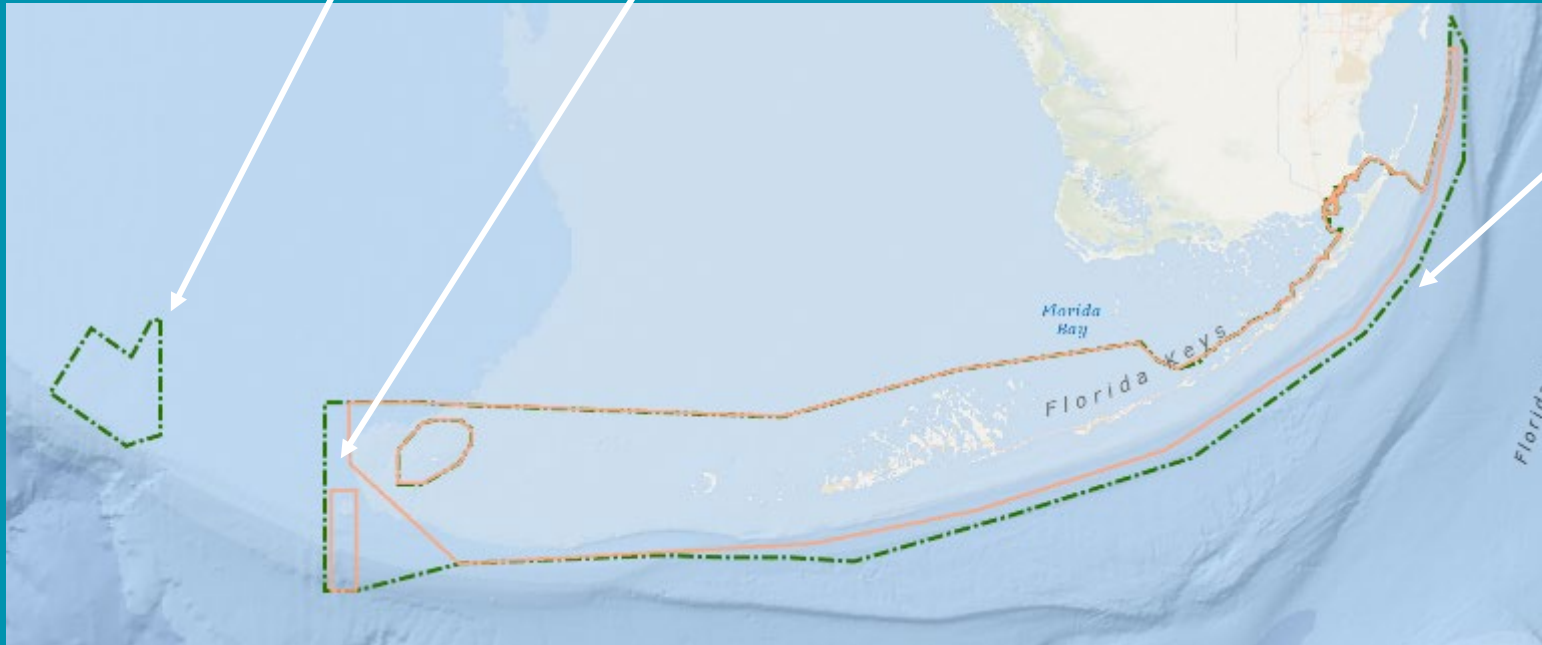
FLORIDA KEYS
NATIONAL MARINE
SANCTUARY

Sanctuary Boundary: Proposed Expansion



Nationally Significant - Pulley Ridge

Connect & Preserve Special Habitats

Connectivity - Tortugas Region



Consistent regulation - Expand boundary to include areas already closed to large vessel traffic

-  Existing: 3,800 sq miles
-  Proposed: 4,800 sq miles



TEMPORARY REGULATION EMERGENCY & ADAPTIVE MANAGEMENT

Act Quickly to Respond & Protect

Proposed regulation:

180-day action + optional 186-day extension

3 Categories:

Minimize
resources
impacts

Initiate
restoration

Facilitate
timely
research



Sets process for implementation





Traditional fishing means those commercial or recreational fishing activities that were customarily conducted within the sanctuary prior to its designation as identified in the 1996 Environmental Impact Statement and Management Plan for this sanctuary.

Next Steps and Implementation:

- Work with NMFS, FWC, and the Gulf of Mexico and South Atlantic FMCs on an updated Protocol for Cooperative Fisheries Management to:
 - clarify traditional fishing activities, and
 - develop a transparent process to evaluate new or modified fishing activities and other relevant changes to fisheries management.

Marine Zones & Associated Regulations: Proposal Goals

- Protect sensitive habitats and ecological functions
- Facilitate ecosystem restoration
- Simplify and create consistent regulations

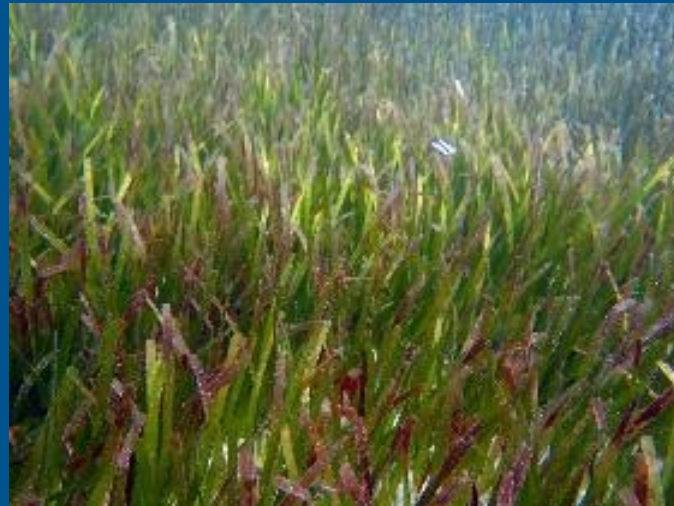


Photo Credit: Shawn
Verne



FLORIDA KEYS
NATIONAL MARINE SANCTUARY



FLORIDA KEYS
NATIONAL MARINE
SANCTUARY

SANCTUARY PRESERVATION AREAS

Separate Conflicting Uses, Protect Habitats, Create Consistency

**Sanctuary
Preservation
Areas**

| | |
|-----|------|
| 6.4 | 12.1 |
|-----|------|

○ ○ ○ ○ ○

○ ○ ○ ○ ○

○ ○ ○ ○ ○

● 17 ○ ○

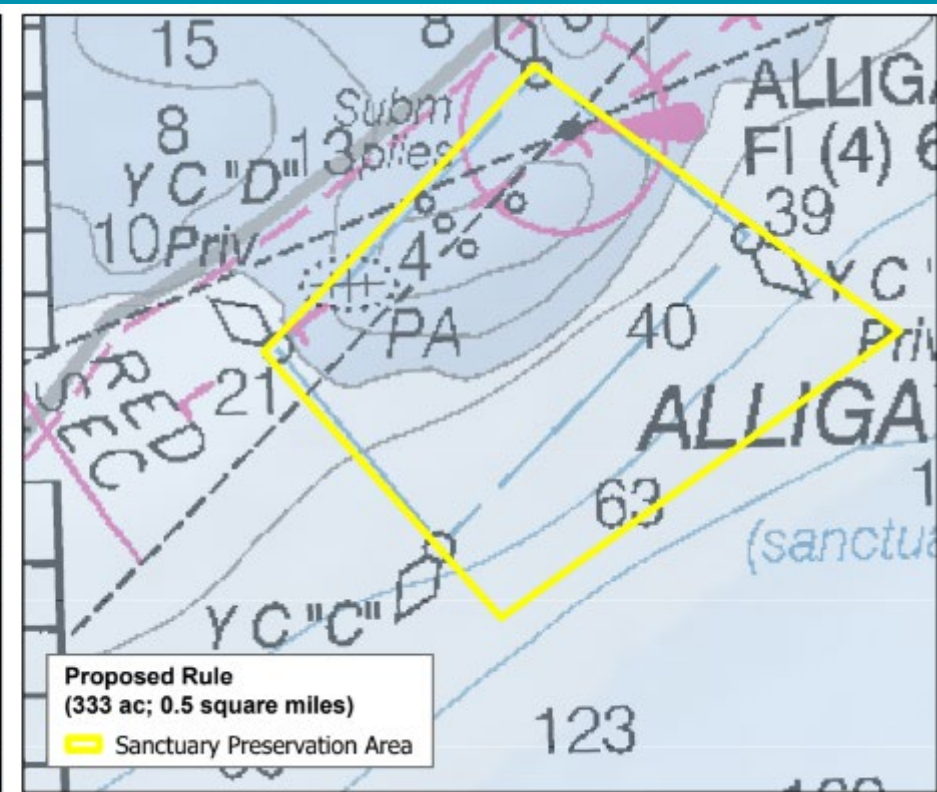
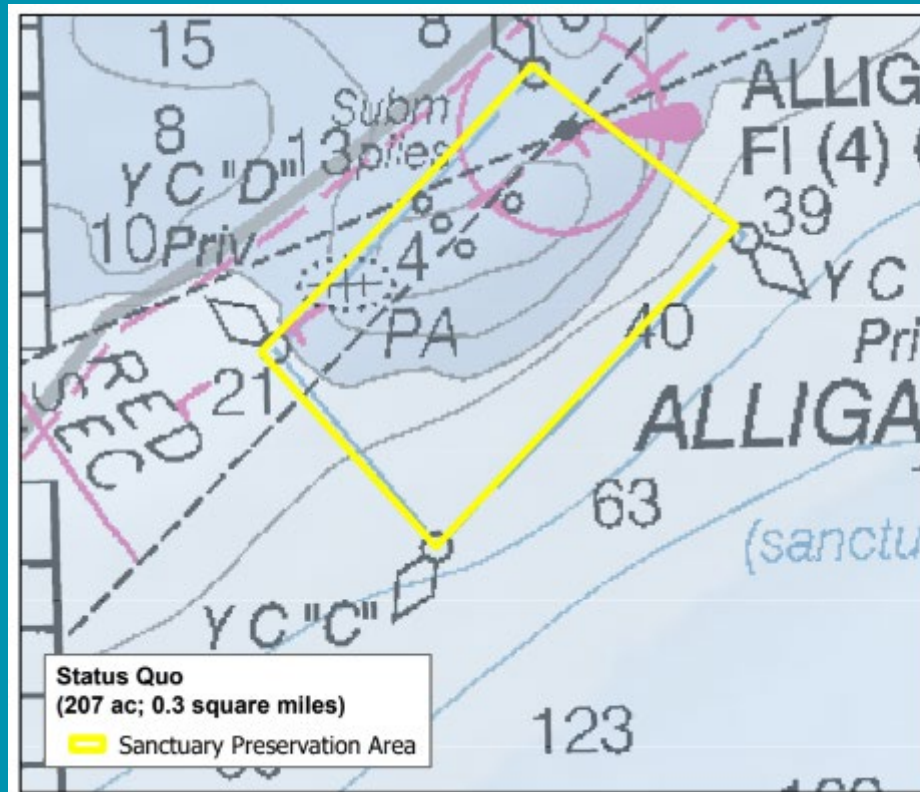




Separate Conflicting Uses, Protect Habitats, Create Consistency



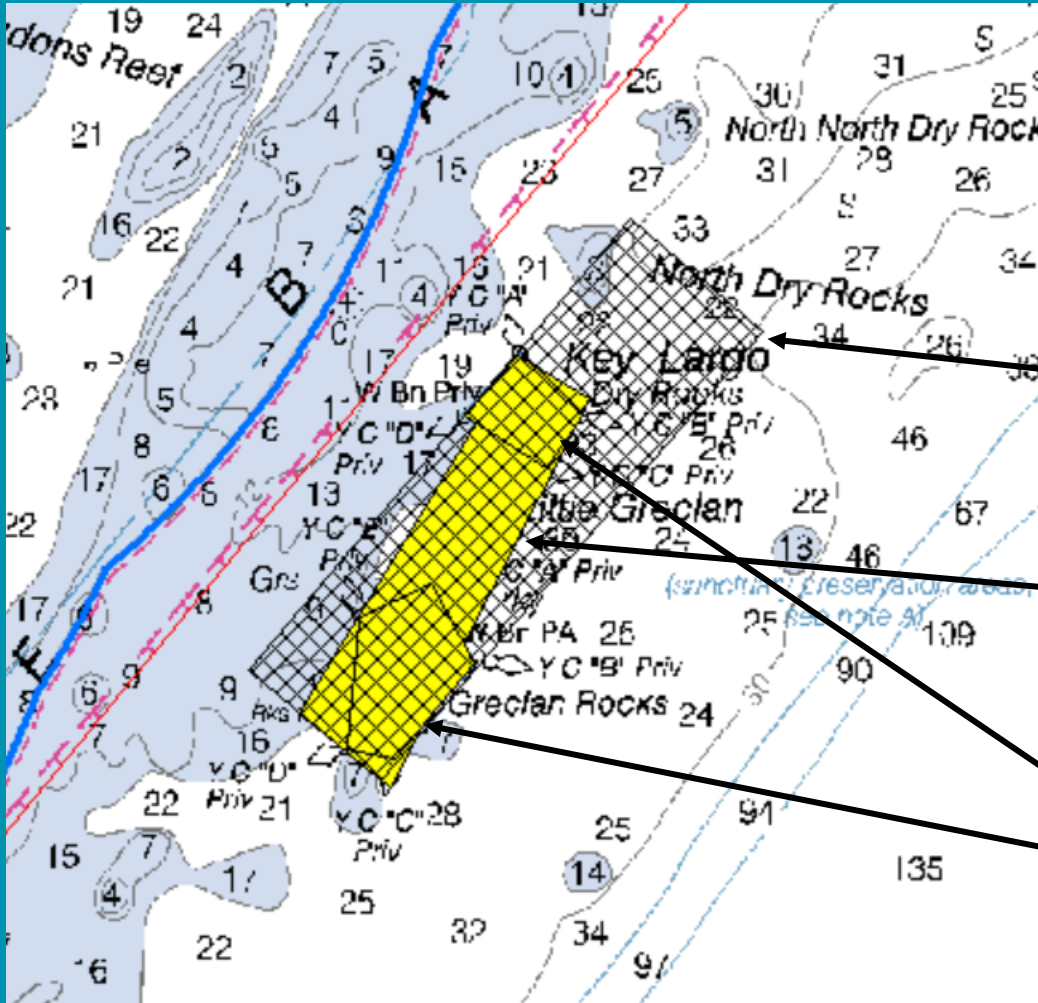
Photo Credit: Jack Fishman





Key Largo Dry Rocks-Grecian Rocks SPA

*Separate Conflicting Uses,
Protect Habitats, Create
Consistency*



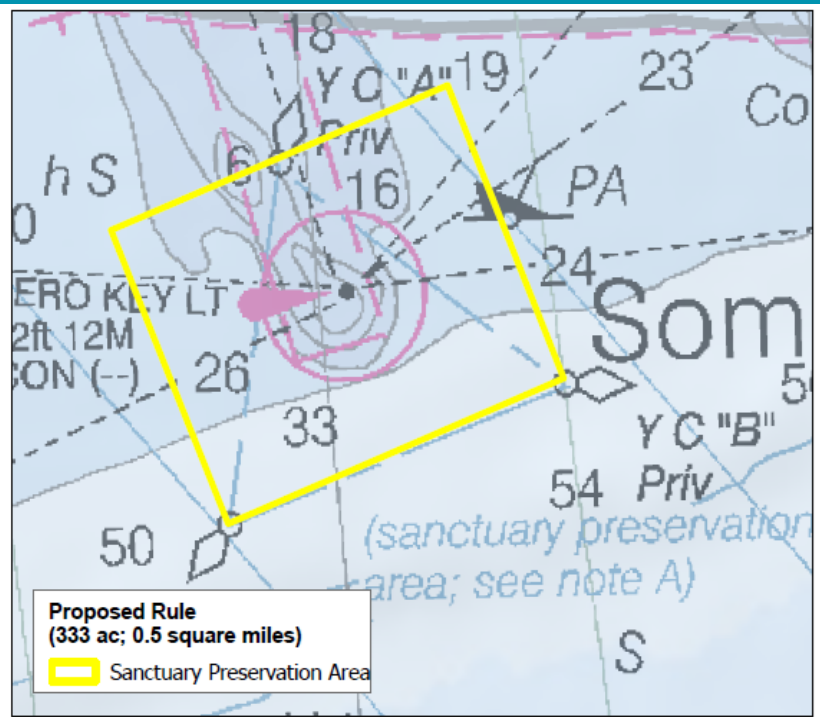
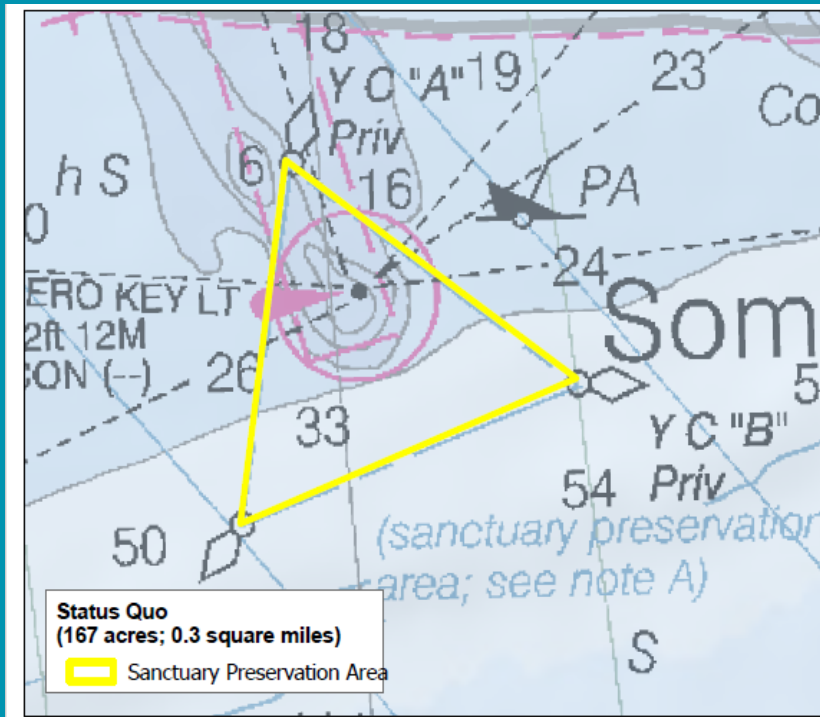
DEIS proposal (1.2 square miles)

Propose rule marine zone (0.5 square miles)

Existing marine zones (0.3 square miles combined)



Separate Conflicting Uses, Protect Habitats, Create Consistency





FLORIDA KEYS
NATIONAL MARINE
SANCTUARY

CONSERVATION AREAS

Protect Contiguous, Diverse Habitats & Facilitate Research

Conservation Areas*

194

213



6



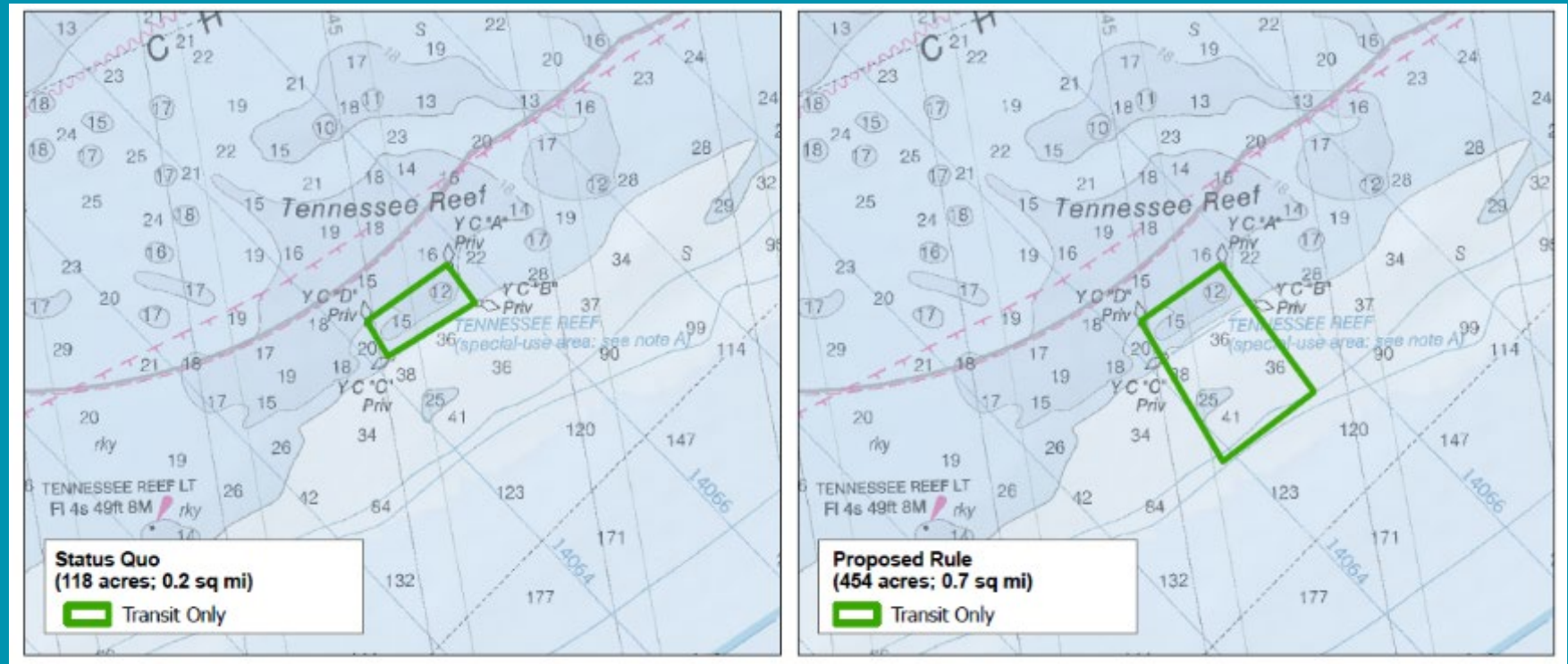


Tennessee Reef Conservation Area

Facilitate Research, Protect Habitats



Photo Credit: USCG

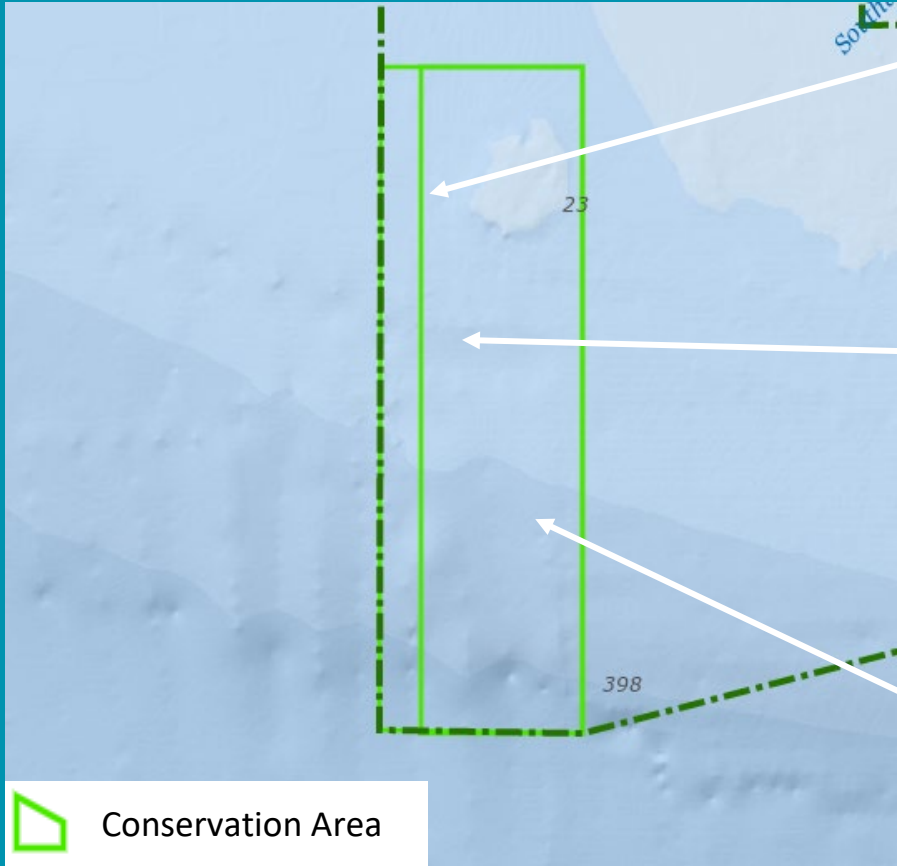




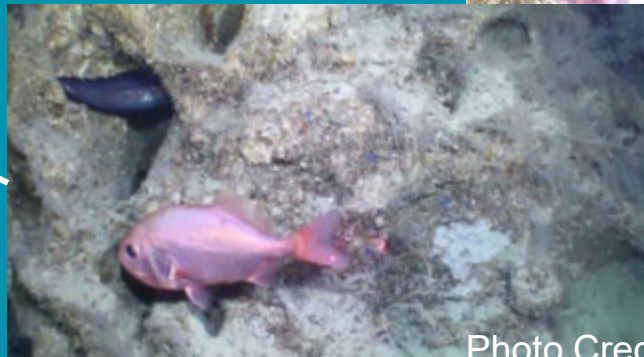
CONSERVATION AREAS

Modified:

Tortugas South (90.38 sq miles)



*Protect Additional
Fish Spawning
Habitat*





Protect Nurseries & Facilitate Restoration

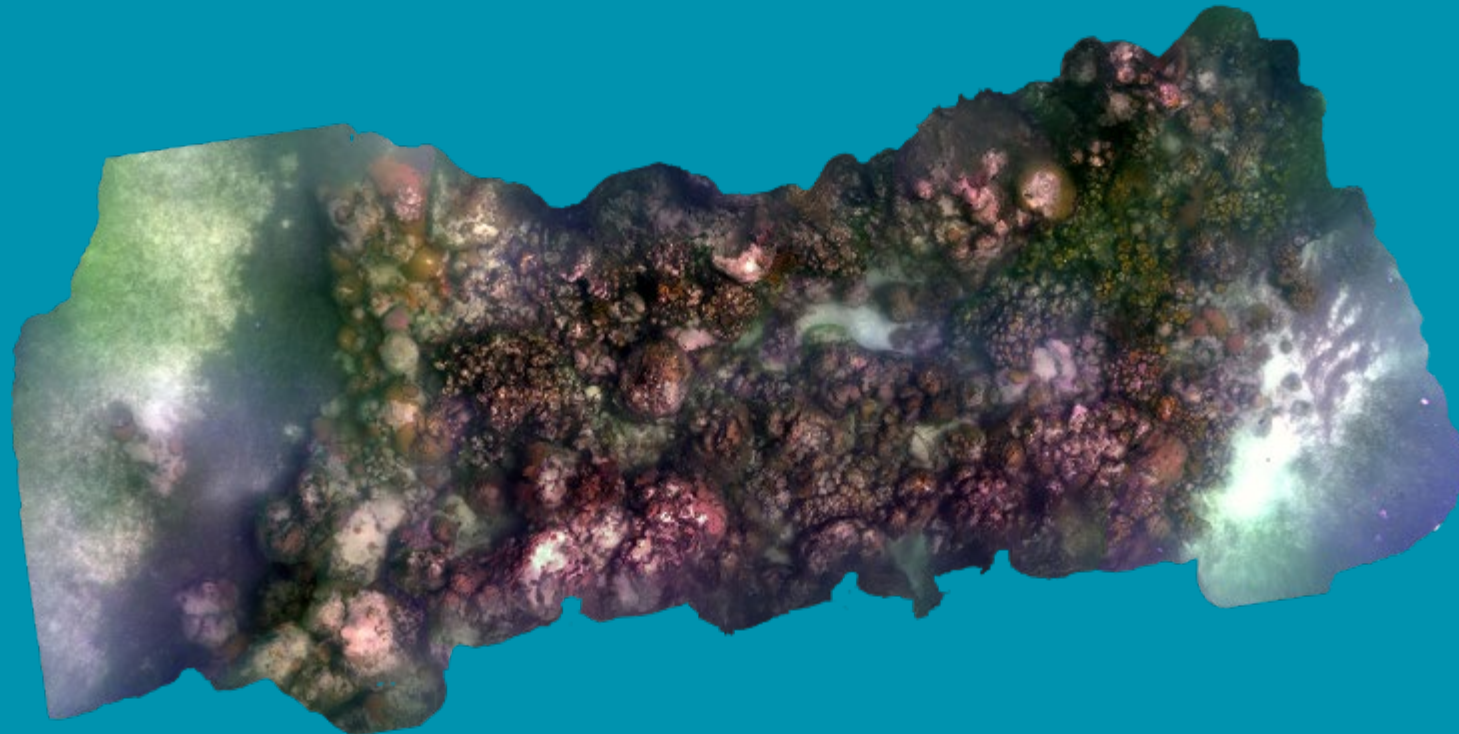




FLORIDA KEYS
NATIONAL MARINE
SANCTUARY

RESTORATION AREAS

Cheeca Rocks East and Cheeca Rocks South Habitat Restoration Areas - proposed new (0.15 sq miles including Cheeca Rocks SPA)





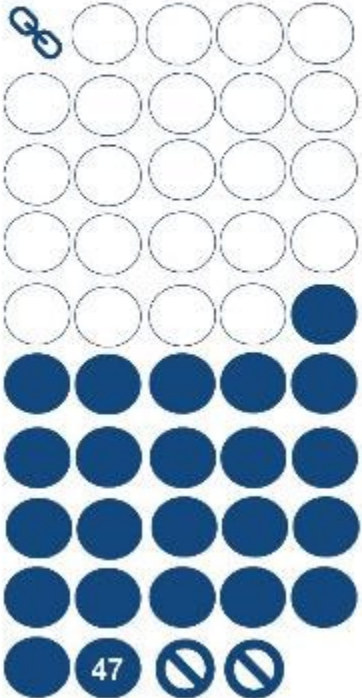
FLORIDA KEYS
NATIONAL MARINE
SANCTUARY

WILDLIFE MANAGEMENT AREAS

Protect & Minimize Wildlife Disturbance

Wildlife Management Areas**

37.5 322.6



Regulations Vary



**Note: Proposed rule WMA area includes Pulley Ridge and Tortugas Bank No Anchor Area










FLORIDA KEYS
NATIONAL MARINE
SANCTUARY

WILDLIFE MANAGEMENT AREAS

Proposed Rule



-  No Entry
-  No Anchor
-  Idle Speed
-  No Anchor Vessels Greater than 50 m
-  No Motor
-  Transit Only and No Anchor April 1 to July 31
-  No Motor and No Anchor

Socio-Economic Analysis

Benefits

Maintaining the flow of services afforded by healthy marine ecosystems:

- productive fisheries
- tourism
- recreational opportunities
- non-market value

Costs

Maximum potential loss (assuming no replacement):

- less than 1% of annual revenue for all affected fisheries (commercial and recreational)
 - Excepting lobster fishery (~2% annual loss)

Office of National Marine Sanctuaries
National Oceanic and Atmospheric Administration



NATIONAL MARINE SANCTUARIES CONSERVATION SERIES

Florida Keys National Marine Sanctuary Restoration Blueprint: Updated Socioeconomic Supporting Documentation for the 2019 Draft Environmental Impact Statement and 2022 Proposed Rule



July 2022 | sanctuaries.noaa.gov
National Marine Sanctuaries Conservation Science Series ONMS-22-03



Florida Keys National Marine Sanctuary Restoration Blueprint: Revised Draft Management Plan



floridakeys.noaa.gov/blueprint/

Management Plan

Focuses on understanding and improving the condition of sanctuary resources through reducing threats and addressing emerging issues

Proposed actions focus on:

- targeted research
- updated and adaptive management efforts
- regulatory compliance
- community involvement
- stewardship



Management Plan: Priority Themes

- Management Effectiveness and Adaptive Management
- Water Quality
- Restoration
- Visitor Use Management
- Enforcement
- Stewardship and Engagement

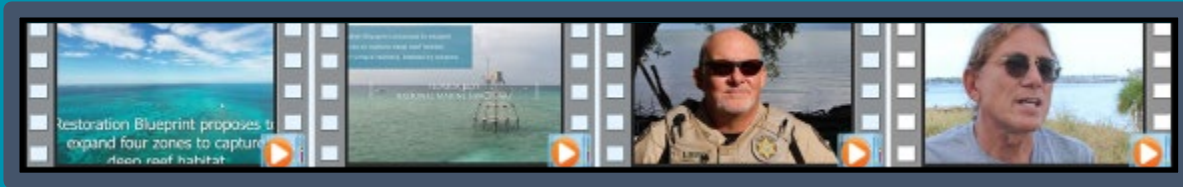




FLORIDA KEYS
NATIONAL MARINE
SANCTUARY

Resources for public engagement: <https://floridakeys.noaa.gov/blueprint/>

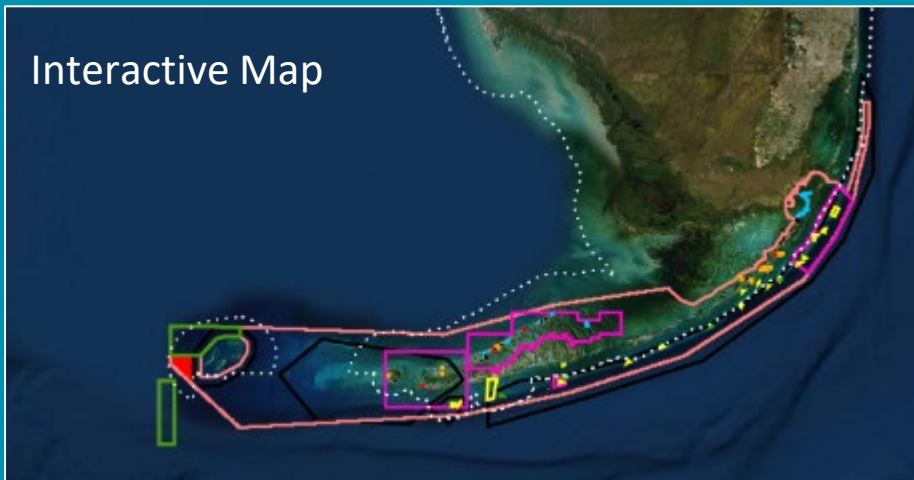
Video Library



Document Library



Interactive Map



Public Meeting Information & Registration Links

COMMENT
NOW

Summary Presentation



FLORIDA KEYS
NATIONAL MARINE
SANCTUARY

Presentation Outline

- Why Create a Restoration Blueprint
- Restoration Blueprint timeline and status
- Proposed Rule highlights
 - Sanctuary boundary
 - Sanctuary-wide regulations
 - Marine zones & associated regulations
- Public outreach products and tools
- Next steps and how to stay engaged



Photo Credit: Corals Seawater Society



FLORIDA KEYS
NATIONAL MARINE
SANCTUARY

Public Comment Opportunities

Q&A

- August 16 - Virtual ✓

Public Comment



- August 30 - Virtual ✓
- September 20 – Coral Shores H.S. ✓
- September 21 – Marathon H.S.
- September 22 – Key West H.S.
- October 18 – Marathon - Sanctuary Advisory Council Meeting
- Oct. 26 – COMMENT CLOSES

A graphic featuring a central white QR code on a dark blue circular background. Surrounding the QR code are silhouettes of marine life: a school of fish in the top left, a manatee in the top right, a sea turtle in the bottom left, and a shark in the bottom right. The entire graphic is set against a white grid background.

**Learn more and make your comments
by scanning the QR code or visit:
floridakeys.noaa.gov/blueprint/**



**FLORIDA KEYS
NATIONAL MARINE SANCTUARY**