



SSC Meeting
April 2026

THE SOUTH ATLANTIC FISHERY MANAGEMENT COUNCIL

Background Information and Schedule for Upcoming Assessments



South Atlantic SEDAR Schedule

Steering Committee Approved and SEFSC Scheduled Projects
 Steering Committee Approved, PENDING SEFSC SCHEDULING
 FUTURE Requests
 No SEDAR Involvement



- Terms of Reference approved by Council at March Council meeting:
 - Dolphin MSE
 - Spanish Mackerel
 - King Mackerel
 - Gag (previously approved)
- Terms of Reference to Review – SSC April 2026:
 - Black Sea Bass
 - Vermilion Snapper

| Year | South Atlantic Branch | | | | Florida FWCC | |
|------|---------------------------|---------------------|---|-------------------------------------|--------------|-----------------------|
| | 1 | 2 | 3 | 4 | 1 | 2 |
| 2026 | S90 Red Snapper Benchmark | BSB RW? | | | S96 YTS OA | |
| | | S104 Dolphin MSE RW | | SATL - King Mackerel (Gulf Analyst) | S94 Hogfish | |
| 2027 | Spanish Mack (TWG) | S106 Gag Grouper | | | | |
| | Red Grouper (DW/Stock ID) | Vermilion Update | | | | Black Grouper MSE RW? |
| 2028 | | Snowy Update /TWG | | | | |
| | Red Porgy (TWG) | GAJ (TWG) | | | | |
| 2029 | | | | | | |
| | Tilefishes | Scamp | | | | |
| 2030 | | | | | | |
| | | | | | | |



Progress Updates

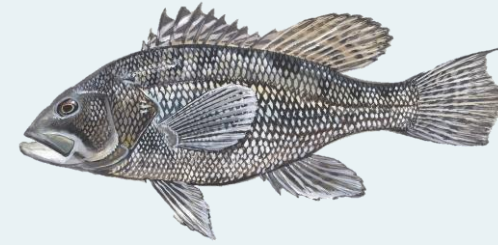
- **MRIP-FES Updates**
 - Calibrations scheduled to be completed August 31.
 - Prioritize Black Sea Bass and Red Snapper for South Atlantic region.
- **Black Sea Bass Assessment (ToR: Agenda item 10)**
- **SEDAR 90 South Atlantic Red Snapper**
 - Assessment Webinars → Underway
 - Review Workshop → December 14-18, 2026
- **SEDAR 94: Florida Hogfish**
 - Assessment Webinars → Underway
 - Review Workshop → July 13-17, 2026
 - Joint Sub-Group SSC Review w/ Gulf
- **Black Grouper Management Procedure**
 - Joint Sub-Group SSC Review w/ Gulf
- **SEFSC Precision Thresholds Workgroup Report**
- **SEDAR infographics and new materials**



Black Sea Bass Next Assessment



- **Type:** Conducted internally by SEFSC
- **Review Workshop:** SSC subgroup and full SSC



Preliminary Schedule:

| | |
|---|---|
| Apr | - Draft Terms of Reference to SSC |
| May | - Council Terms of Reference Approval (Expedited) |
| Jun-Aug | - Aggregate available data - Assessment model development |
| <u>Aug 31</u> | - <u>MRIP-FES Calibration completed</u> - All data finalized |
| Oct 15 <i>(4-6 weeks)</i> | - Integrate new MRIP-FES into assessment model |
| Nov 1 <i>(6-8 weeks)</i> | - Final assessment report submitted |
| Dec 1 <i>(10-12 weeks)</i> | - Convene Review Workshop |
| Jan 2027 <i>(14-16 weeks)</i> | - Special SSC Meeting: Final assessment review and setting of catch level recommendations |
| Mar 2027 | - Recommendations to Council |

Uncertainties identified during SSC review of SEDAR76 Update:



- MRIP-FES recreational catch timeseries
- Direct estimate of MSY vs. Proxy
 - Mean Recruitment vs. B-H stock recruit relationship (steepness)
 - Nonstationarity and Recent Low Recruitment/Biomass
- Magnitude of Selectivity of Discards
 - Discard selectivity of the general recreational fleet
 - Inshore v. Offshore discard trends
 - Commercial logbooks
- Terminal year fishing mortality potential bias
 - Relationship between high F and low biomass
 - Impacts on Projections

Uncertainties identified during SSC review of SEDAR 55, 83



- MRIP-FES recreational catch timeseries
- Poor Index fits:
 - SERFS fishery-independent index (not tracking abundance)
 - Fishery-dependent indices
 - Index-based interim analysis (S83): *not recommended*
- Steepness profiling (fixed vs. estimated)
- Potential changes in selectivity due to management actions

Vermilion Update Assessment

- **Type:** Conducted internally by SEFSC
- **Review:** Full SSC
- **Preliminary Schedule:**



| | |
|-------------------|---------------------------------------|
| Sep 2026 | - Council Terms of Reference Approval |
| Fall 2027 | - Assessment start |
| April 2028 | - Full SSC Review |
| June 2028 | - Recommendations to Council |



SEDAR Committee
SAFMC Meeting
March 2026

THE SOUTH ATLANTIC FISHERY MANAGEMENT COUNCIL

Scopes of Work and Terms of Reference for Upcoming Assessments

