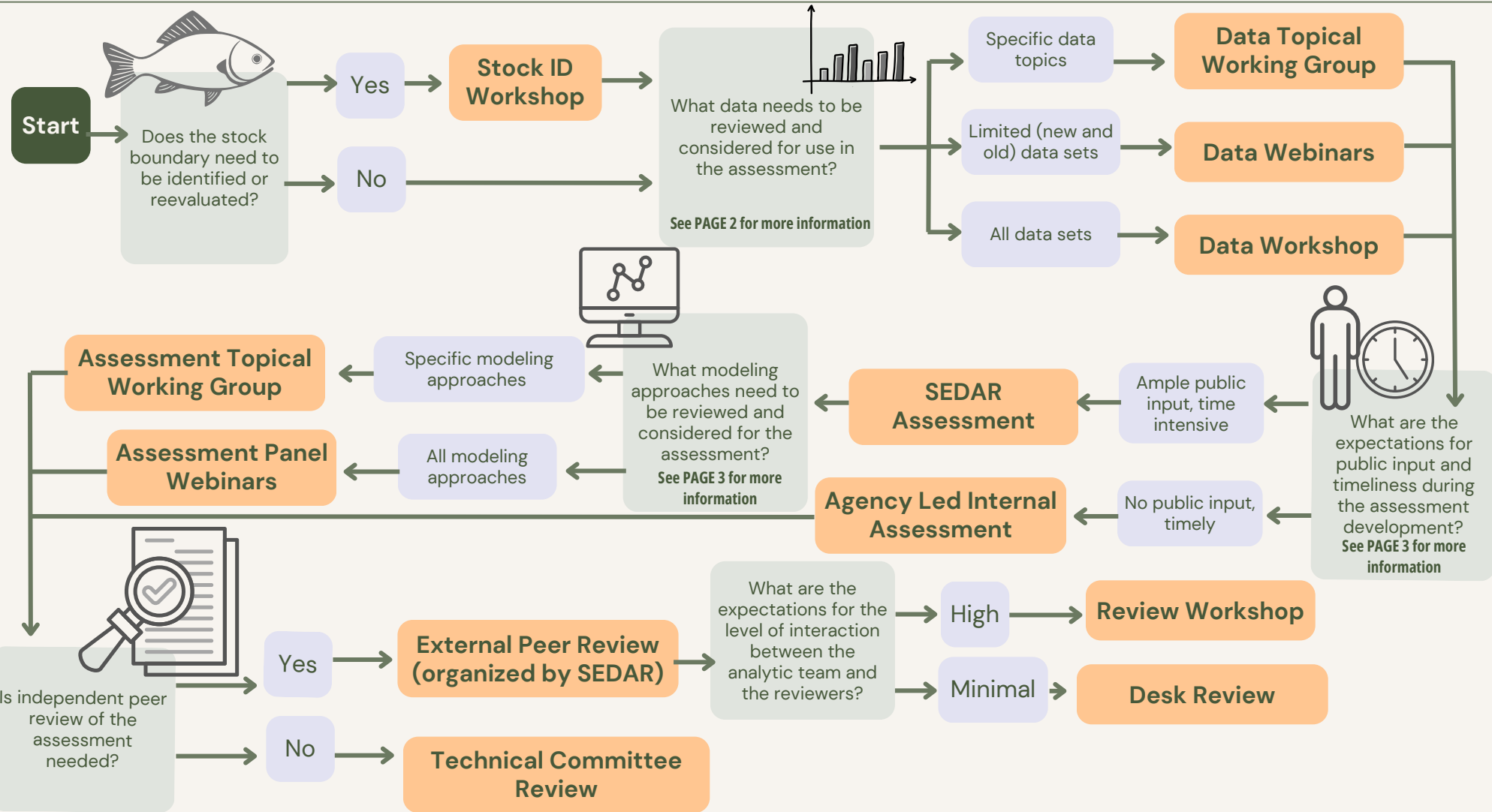


SEDAR Stock Assessment Components

DECISION TREE



Data Components



Details	Topical Working Group	Data Webinars	Data Workshop
Stock Identification	<ul style="list-style-type: none"> If needed 	<ul style="list-style-type: none"> If needed 	<ul style="list-style-type: none"> If needed
Data Scoping	✓	✓	✓
Participants	<ul style="list-style-type: none"> Small working group comprised of analytic team, SSC members, stakeholders and other technical experts 	<ul style="list-style-type: none"> Panel of appointed individuals (agency scientists, academics, data subject matter experts, stakeholders) 	<ul style="list-style-type: none"> Panel of appointed individuals (agency scientists, academics, data subject matter experts, stakeholders)
Scope of Data	<ul style="list-style-type: none"> Review and provide recommendations on specific data topics as defined in the Terms of Reference Discussion of other data topics not specifically identified is limited 	<ul style="list-style-type: none"> Review and provide recommendations on the use of new data streams or data analysis approaches data as defined in the Terms of Reference Only select data sets up for discussion and consideration 	<ul style="list-style-type: none"> Review and provide recommendations on all available fishery data, monitoring programs, and life history information All data sets up for discussion and consideration
Timing	<ul style="list-style-type: none"> Series of webinars Shortest timeframe 	<ul style="list-style-type: none"> Series of webinars Medium timeframe 	<ul style="list-style-type: none"> One week workshop
Platform	<ul style="list-style-type: none"> Webinars 	<ul style="list-style-type: none"> Webinars 	<ul style="list-style-type: none"> In person or webinar
Coordinating Body	<ul style="list-style-type: none"> SEDAR All meetings organized by SEDAR are open to the public 	<ul style="list-style-type: none"> SEDAR All meetings organized by SEDAR are open to the public 	<ul style="list-style-type: none"> SEDAR All meetings organized by SEDAR are open to the public



Assessment Components



Details	Topical Working Group	Internal Assessment	Assessment Webinars
Pre-decisional Briefing	✓	✓	✗
Participants	<ul style="list-style-type: none"> • Small working group comprised of analytic team, SSC members, other technical experts 	<ul style="list-style-type: none"> • Lead analytic agency with unstructured input from group of technical experts recommended by the cooperator to lead agency 	<ul style="list-style-type: none"> • Panel of appointed individuals (agency scientists, academics, other technical experts)
Scope of Modeling	<ul style="list-style-type: none"> • Review and provide recommendations on specific modeling approaches as defined in the Terms of Reference • Discussion of other modeling topics not specifically identified is limited 	<ul style="list-style-type: none"> • Develop assessment without structured input from an assessment panel 	<ul style="list-style-type: none"> • Review and provide recommendations on assessment models, model configuration and uncertainty evaluation • All modeling topics are up for discussion and consideration
Timing	<ul style="list-style-type: none"> • Series of webinars • Shortest timeframe 	<ul style="list-style-type: none"> • No structured meetings • Medium timeframe 	<ul style="list-style-type: none"> • 6-8 month series of webinars
Platform	<ul style="list-style-type: none"> • Webinars 	<ul style="list-style-type: none"> • N/A 	<ul style="list-style-type: none"> • Webinars
Coordinating Body	<ul style="list-style-type: none"> • SEDAR • All meetings organized by SEDAR are open to the public 	<ul style="list-style-type: none"> • Lead Analytic Agency • No publicly noticed meetings 	<ul style="list-style-type: none"> • SEDAR • All meetings organized by SEDAR are open to the public





Terms of Reference Development Timeline

Estimated Timeline

(time before start of assessment)



1. Species Selected

Species selected for stock assessment at **SEDAR Steering Committee** and added to SEDAR project grid.

SEDAR Steering Committee
Winter (February or March)
~1.5 years



2. SSC Component Recommendations

The **SSC** provides feedback on desired assessment components.

Science and Statistical Committee
Spring (April)
~1.25 years



3. Statement of Work

Council staff develop statement of work (SoW) using SSC component recommendations. SoW presented at **council meeting**.

Council Meeting
Summer (June)
~1 year



4. Component Negotiations

Components from SoW are negotiated between council staff and SEFSC.

SEFSC and SAFMC Negotiations
Summer and Fall



5. Terms of Reference

Terms of reference (ToRs) are developed using negotiated components. ToRs are presented at **SSC meeting**.

Science and Statistical Committee
Fall (October)
~8 months



6. SEDAR Publishes ToRs

ToRs are then presented at the **council meeting**. Once approved by the council, the ToRs are sent to SEDAR to be posted.

Council Meeting
Winter (December)
~6 months

SOUTH ATLANTIC	ASSESSMENTS	COORDINATING BODY	ANALYTIC AGENCY	STATUS	STOCK ID	DATA STAGE						ASSESSMENT STAGE				REVIEW STAGE		SSC			COUNCIL/ COOPERATOR	
					Stock ID workshop	Data Topical Working Group	Data Webinars	Pre-DW Webinars	Data Workshop	Pos-DW Webinars	Agency Led Assessment	Assessment Webinars	Assessment Topical Working Group	SSC Check In	CIE Desk Review	CIE Review Workshop	Initial SSC Review	Round 2?	Round 3?	Council Presentation		
						Nov-24		Mar/Apr 25	Apr-25			In progress			Nov/Dec 26		Spring 27			Jun-27		
	SEDAR 90 Reid Snapper	SEDAR	SEFSC	Underway																		
	SEDAR 104 Dolphin MSE	SEDAR - RW	SEFSC and Blue Matter Science	Underway																		
	SEDAR 106 Gag Grouper	SEDAR	SEFSC	Approved																		
	SEDAR 1XX Red Grouper	SEDAR	SEFSC	Approved	Jan-27																	
	SEDAR 1XX Spanish Mackerel	SEDAR	SEFSC	Approved	Jan-27				virtual													
	SEDAR 1XX King Mackerel	SEDAR	SEFSC	Approved																		
	SEDAR 1XX Snowy Update	SEDAR	SEFSC	Approved																		
	SEDAR 1XX Red Porgy	SEDAR	SEFSC	Requested																		
	SEDAR 1XX Greater Amberjack	SEDAR	SEFSC	Requested																		
	SEDAR 1XX Scamp	SEDAR	SEFSC	Requested																		
	SEDAR 1XX Tilefish	SEDAR	SEFSC	Requested																		
	BSB RW	SEDAR	SEFSC	Underway											Mid 26						Dec-26	
	Wreckfish MSE	SAFMC	Lynker	Underway																		
	Vermillion Update	SEFSC	SEFSC	Requested																		
	Snapper Grouper MSE	SAFMC	Blue Matter Science	Underway																	Jun-27	
	GAC- joint	SEDAR- RW & MS/AL sea grant	University of South Alabama	Underway											Mar-26						Apr-26	Jun-26