



# The Southeast Reef Fish Survey

2016 Update  
Sampling Activities and Relative Abundance Indices





# Southeast Reef Fish Survey (SERFS)

- ▶ MARMAP (1972)
  - ▶ 1978 → Reef fish sampling with (chevron) traps, bottom longlines, rod-&-reel, etc.
- ▶ SEAMAP-SA (1986)
  - ▶ 2009 → Reef fish sampling (longlines, diet, new stations)
- ▶ SEFIS 2010
  - ▶ Video, bottom mapping



R/V Lady Lisa



R/V Savannah



NOAA Vessel Pisces



Marine Resources Monitoring, Assessment & Prediction Program  
Southeast Area Monitoring & Assessment Program (South Atlantic)  
Southeast Fishery Independent Survey

# Primary Sampling Gears

Soak time for all gears:  
90 minutes

Chevron Video Trap



CTD



Short Bottom Longline



Long Bottom Longline





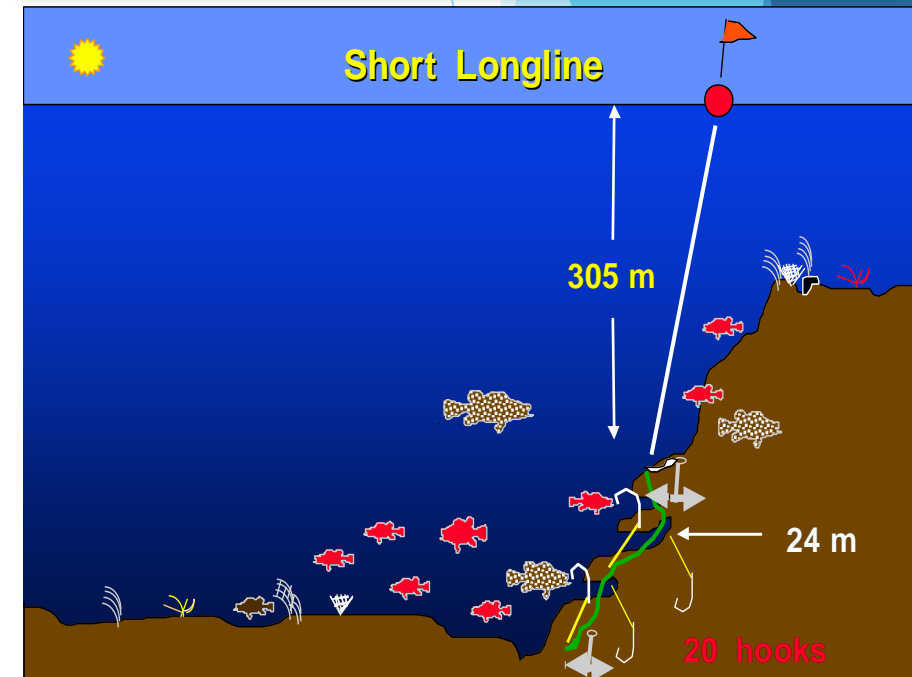
# Chevron Video Trap

- ▶ R/V *Palmetto*, R/V *Savannah*, and *Pisces*
- ▶ Used since 1990
- ▶ (April) May - Sept. (Oct.)
- ▶ Depths **to ~110 m**
- ▶ Baited with Menhaden
- ▶ 1-3 video cameras on each trap
- ▶ ≈4,500 sampling stations  
≈1,500 stations randomly selected  
and sampled



# Short Bottom Longline

- ▶ R/V *Palmetto* (SCDNR)
- ▶ Deeper  $\approx 70$  meters
- ▶ (April) May - Sept. (Oct.)
- ▶ Baited with whole squid
- ▶ Species: Snowy grouper, jacks, tilefish, speckled hind



# Short Bottom Longline

- ▶ R/V *Palmetto* (SCDNR)
- ▶ Deeper **≈70** meters
- ▶ (April) May - Sept. (Oct.)
- ▶ Baited with whole squid
- ▶ Species: Snowy grouper, jacks, tilefish, speckled hind



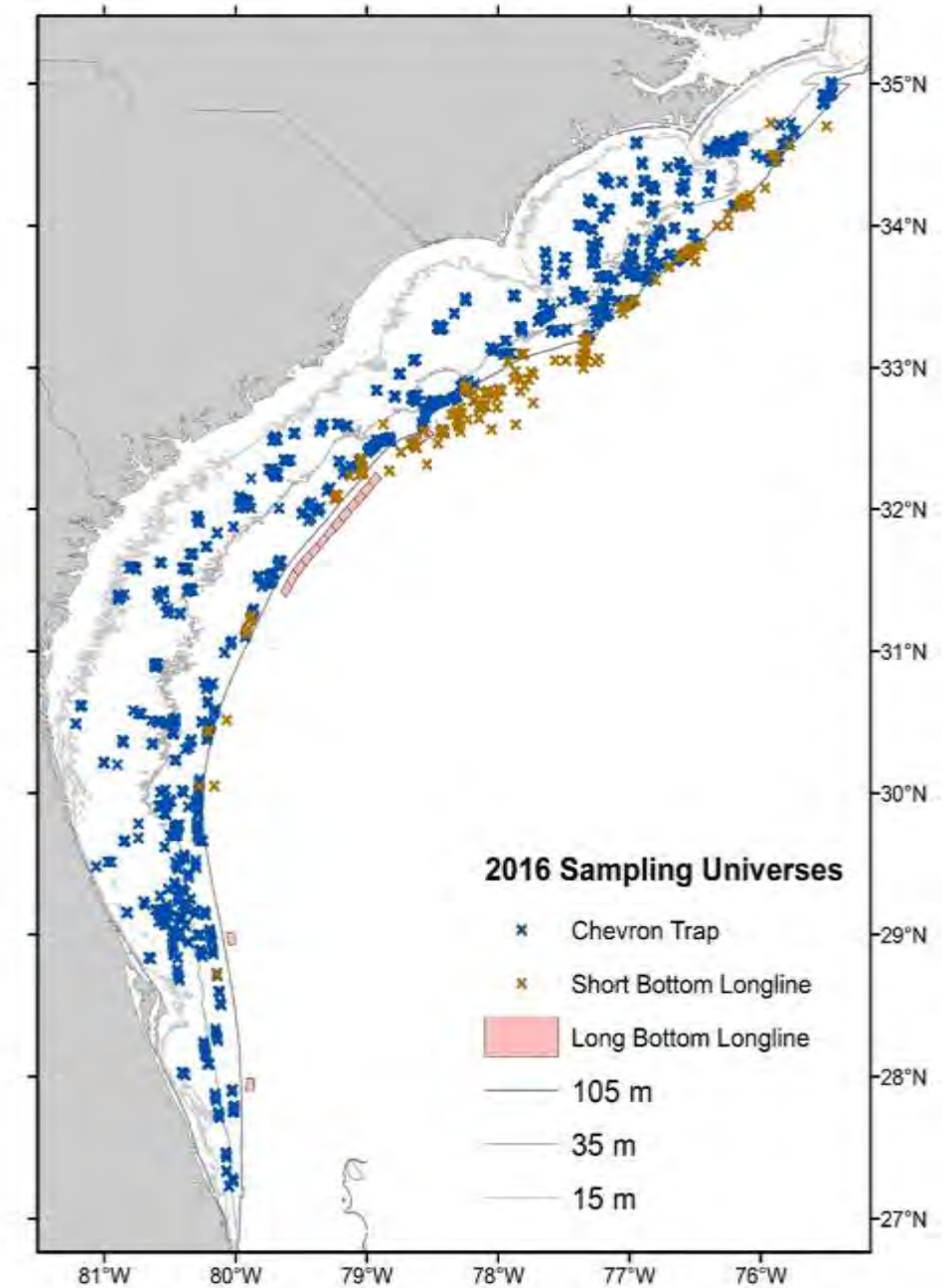
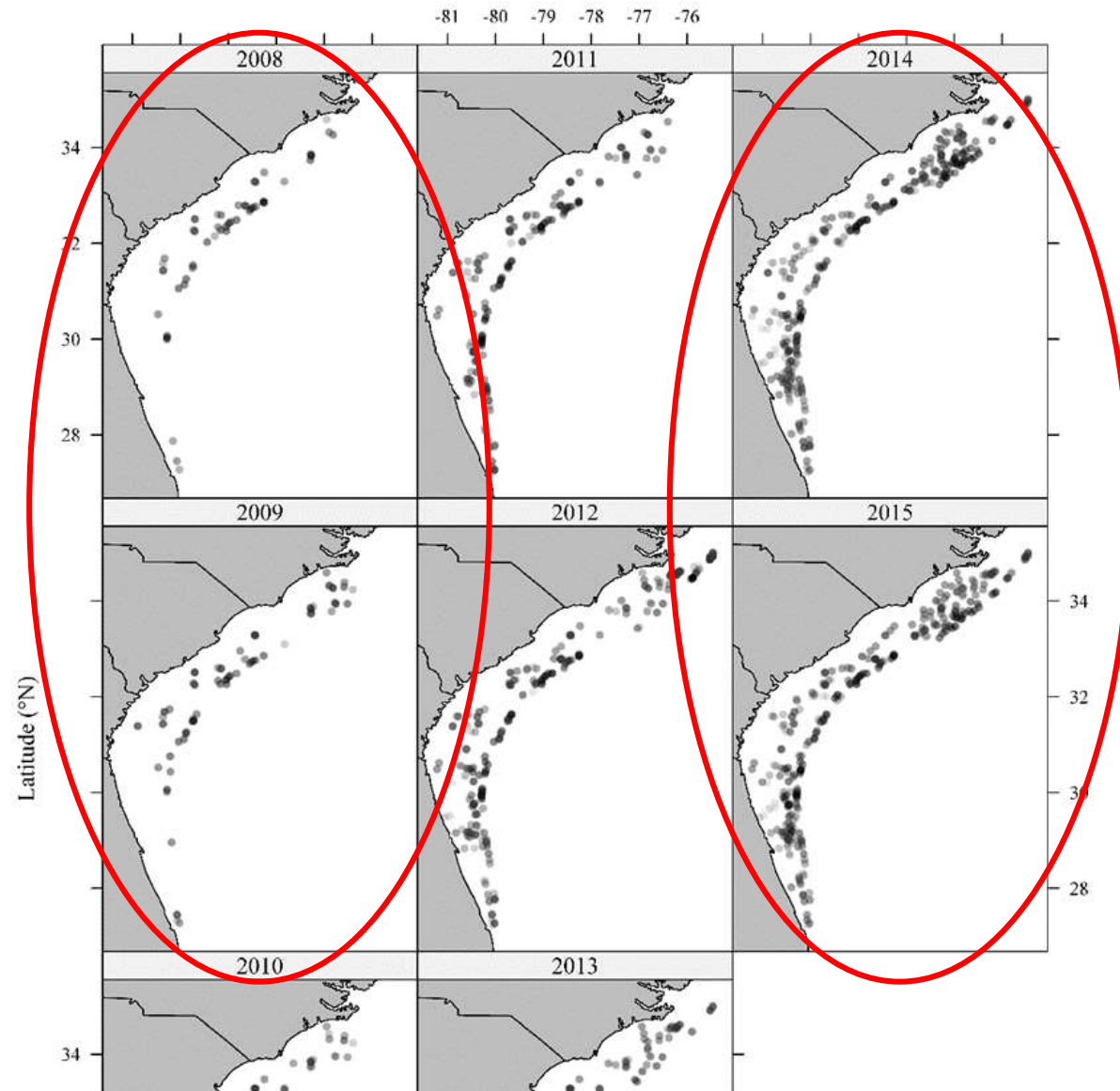
# Long Bottom Longline

- ▶ R/V *Lady Lisa* (SCDNR)
- ▶ **Depths ≈ 170 - 270 m (550 - 900 ft off SC and GA)**
- ▶ Aug. - Sept.
- ▶ Baited with whole squid
- ▶ Species: Golden Tilefish (Sharks)
  - ▶ **15 blocks in “tilefish” habitat, target 2 lines/blocks each year**





# Sampling Increase



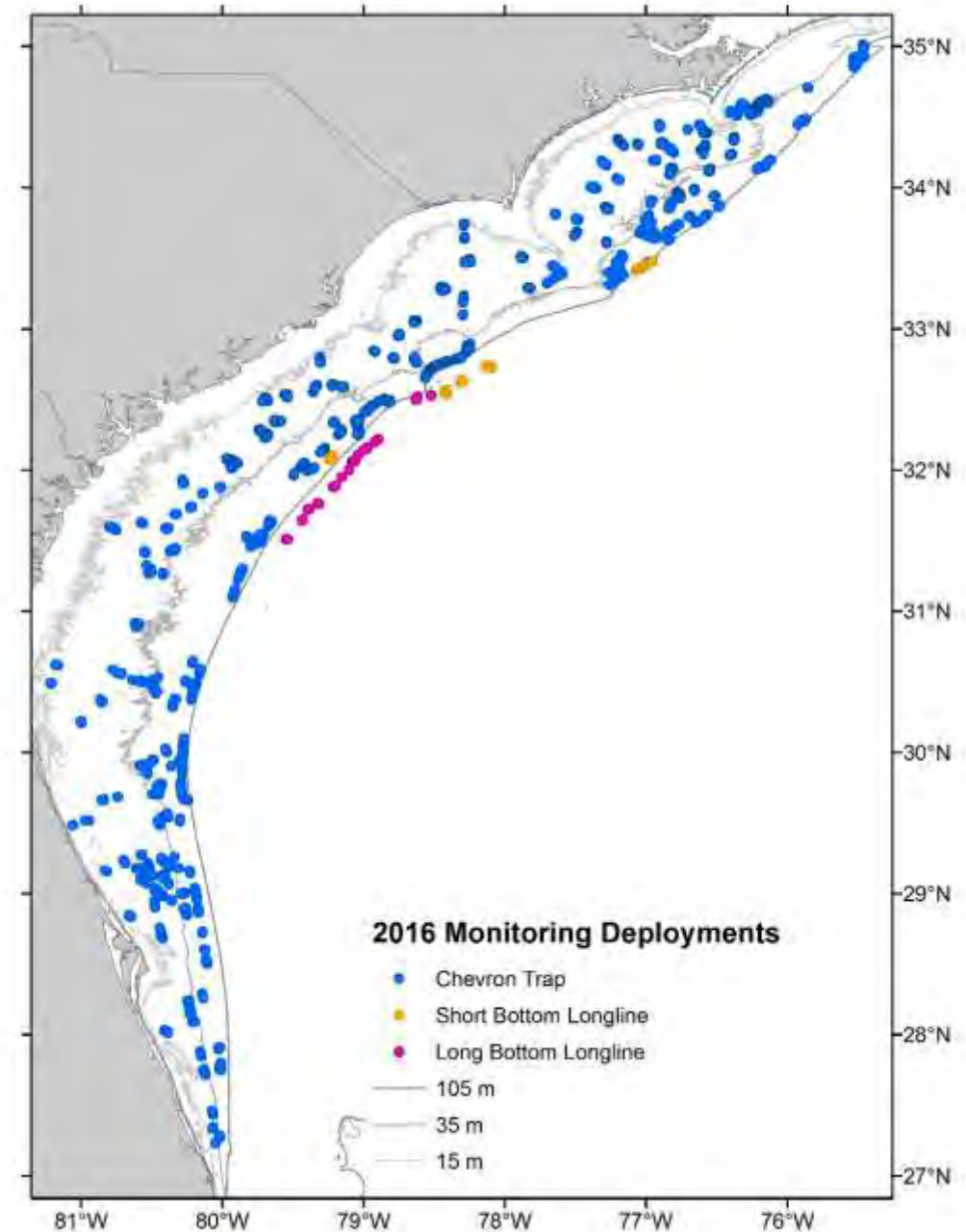
The background of the slide is an underwater photograph showing a large, dense school of fish, likely a species of surgeonfish, swimming in a clear blue ocean. The fish are concentrated in the middle ground, moving towards the left. The seabed is visible as a sandy and rocky reef floor. On the right side of the image, there are several overlapping, semi-transparent blue geometric shapes, including triangles and polygons, which create a modern, abstract design element.

# 2016 Southeast Reef Fish Survey Results



# 2016 Summary

- ▶ 1,537 chevron video traps (SERFS)
- ▶ 78 short bottom longline
- ▶ 30 long bottom longline
- ▶ 431 other gears  
(incl. CTD and rod-&-reel)



Species	rank	CHV	SBLL	LBLL	Total	%
Tomtate	1	18,559			18,559	42
Black Sea Bass*	2	7,989			8,036	18
Vermilion Snapper	3	4,555			4,555	10
Scup/Longspine Porgy	4	2,945			2,945	7
Gray Triggerfish	5	2,589			2,589	6
Red Porgy	6	1,917	7		1,924	4
White Grunt	7	1,275			1,300	3
Red Snapper	8	1,098			1,114	3
Bank Sea Bass	9	734			734	2
Knobbed Porgy	12	137			138	<1
Snowy Grouper	13	27	82		110	<1
Almaco Jack	14	73	14		87	<1
Scamp	16	53	4		61	<1
Blueline Tilefish	20	31	15		46	<1
Gag	23	31	1		38	<1
Tilefish	25	0	8	25	33	<1
Red grouper	32	19			20	<1
<b>Total</b>	<b>89</b>	<b>43 502</b>	<b>175</b>	<b>93</b>	<b>43 896</b>	

\* 20% kept for LH

21 Lionfish  
(rank 31)



# Overview of CPUE for selected species

- ▶ Gears
  - ▶ chevron video trap (1990-2016),
  - ▶ short & long bottom longline (1996-2016)
- ▶ CPUE in  $\frac{\text{Catch}}{\text{Trap} \cdot \text{hr}}$ 
  - ▶ Standardized using Delta-GLM method
  - ▶ Index normalized to long term average
  - ▶ Error bars are  $\pm$  95% CI



# Caveats

- ▶ Summary overview, not an update of stock status
- ▶ Constraints, stratification, units, and models for CPUE may be different from those used in (SEDAR) stock assessments
- ▶ Many species not assessed or updated (SEDAR) and not all trends discussed in assessment framework



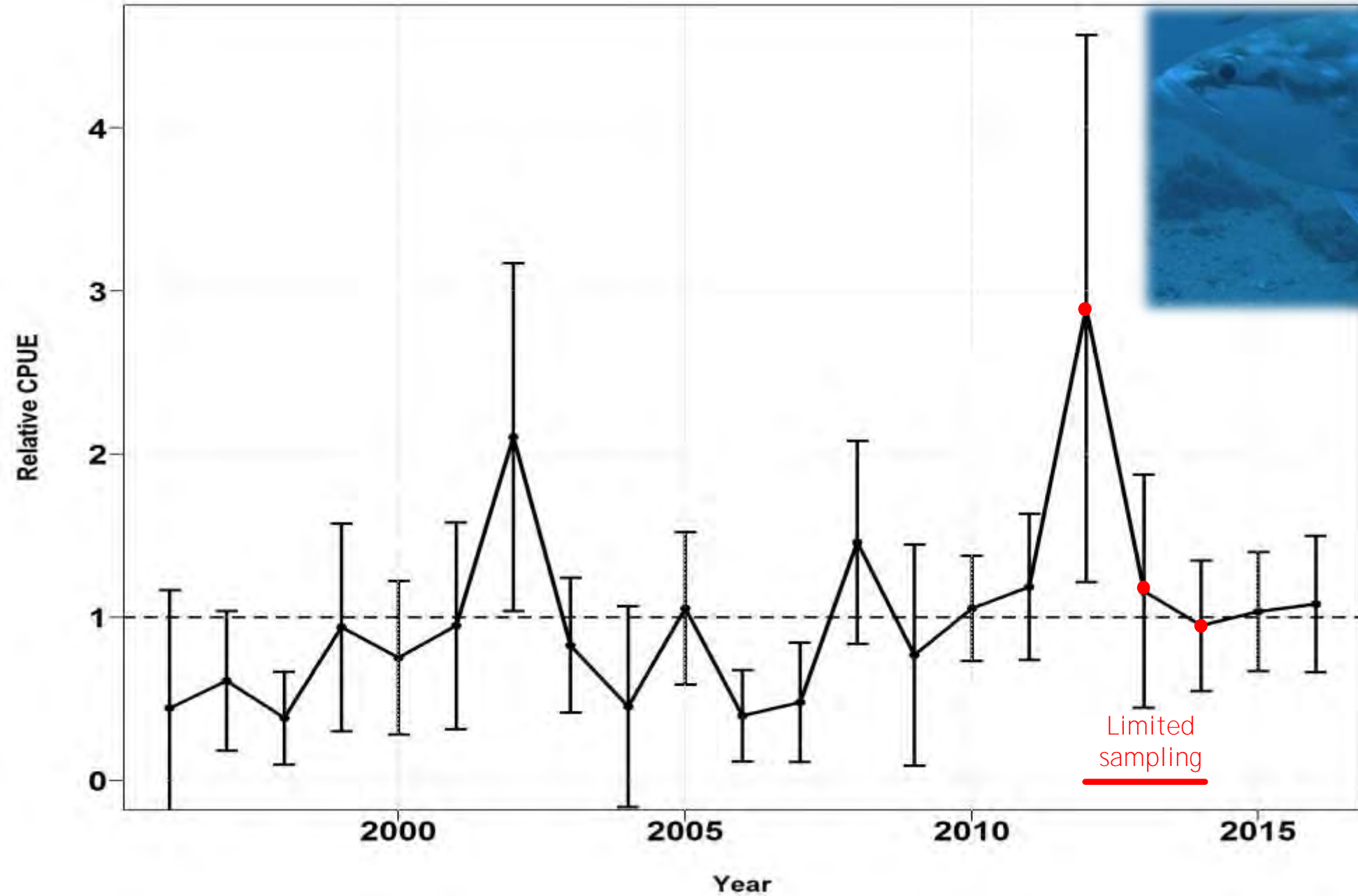




# Overview

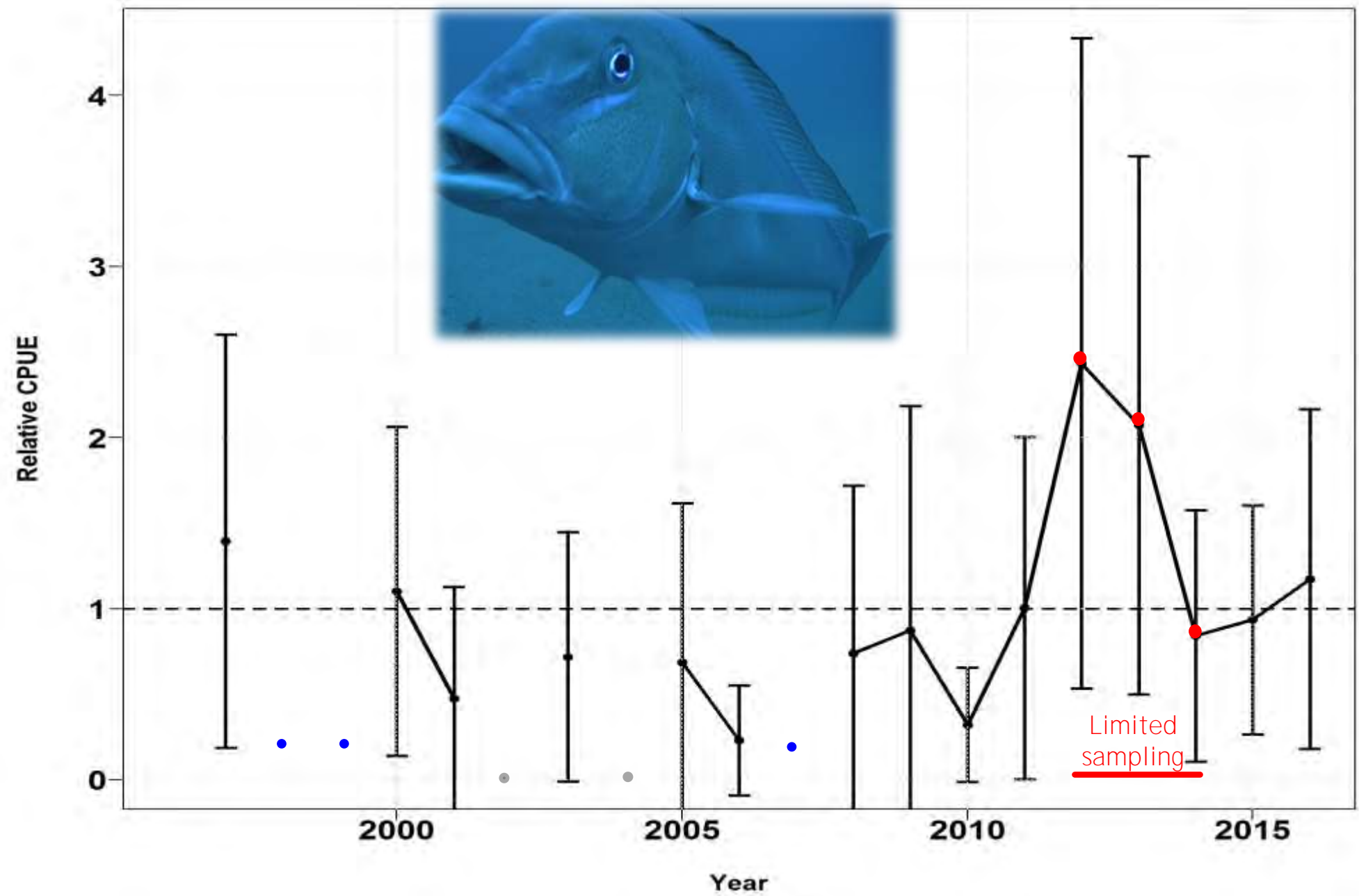


# Snowy Grouper - Short Bottom Longline

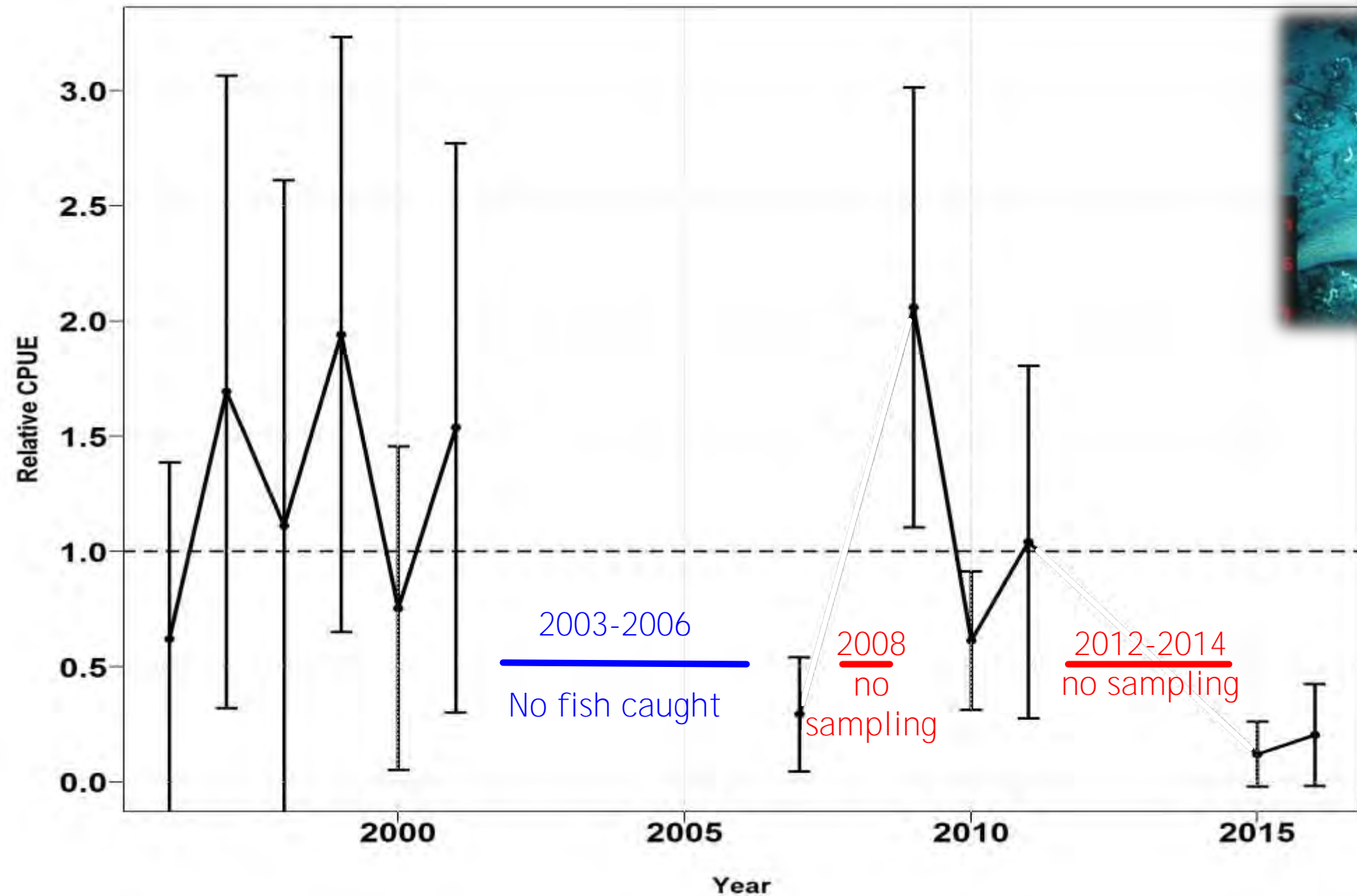




# BlueLine Tilefish - Short Bottom Longline

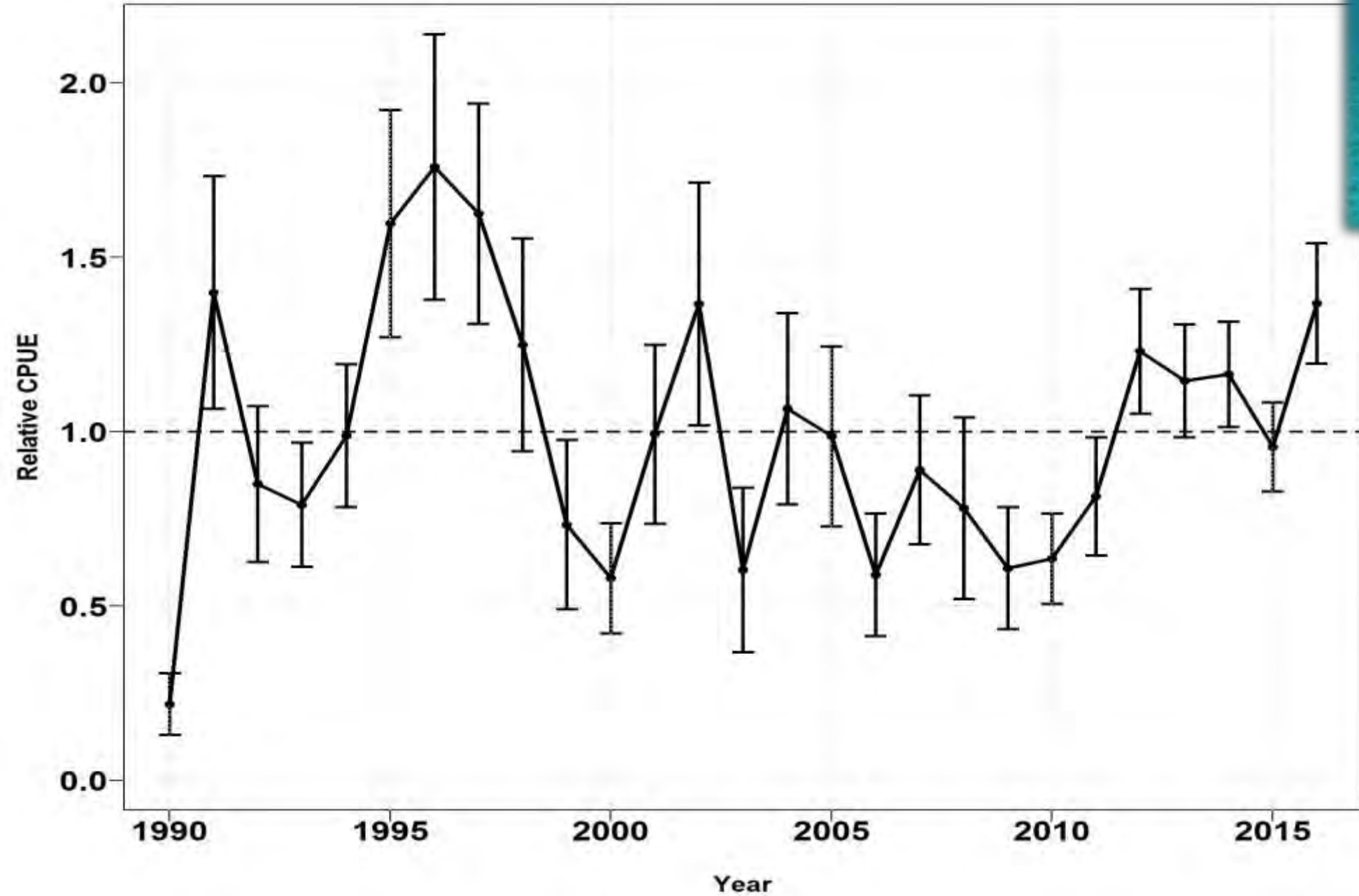


# Golden Tilefish - Long Bottom Longline

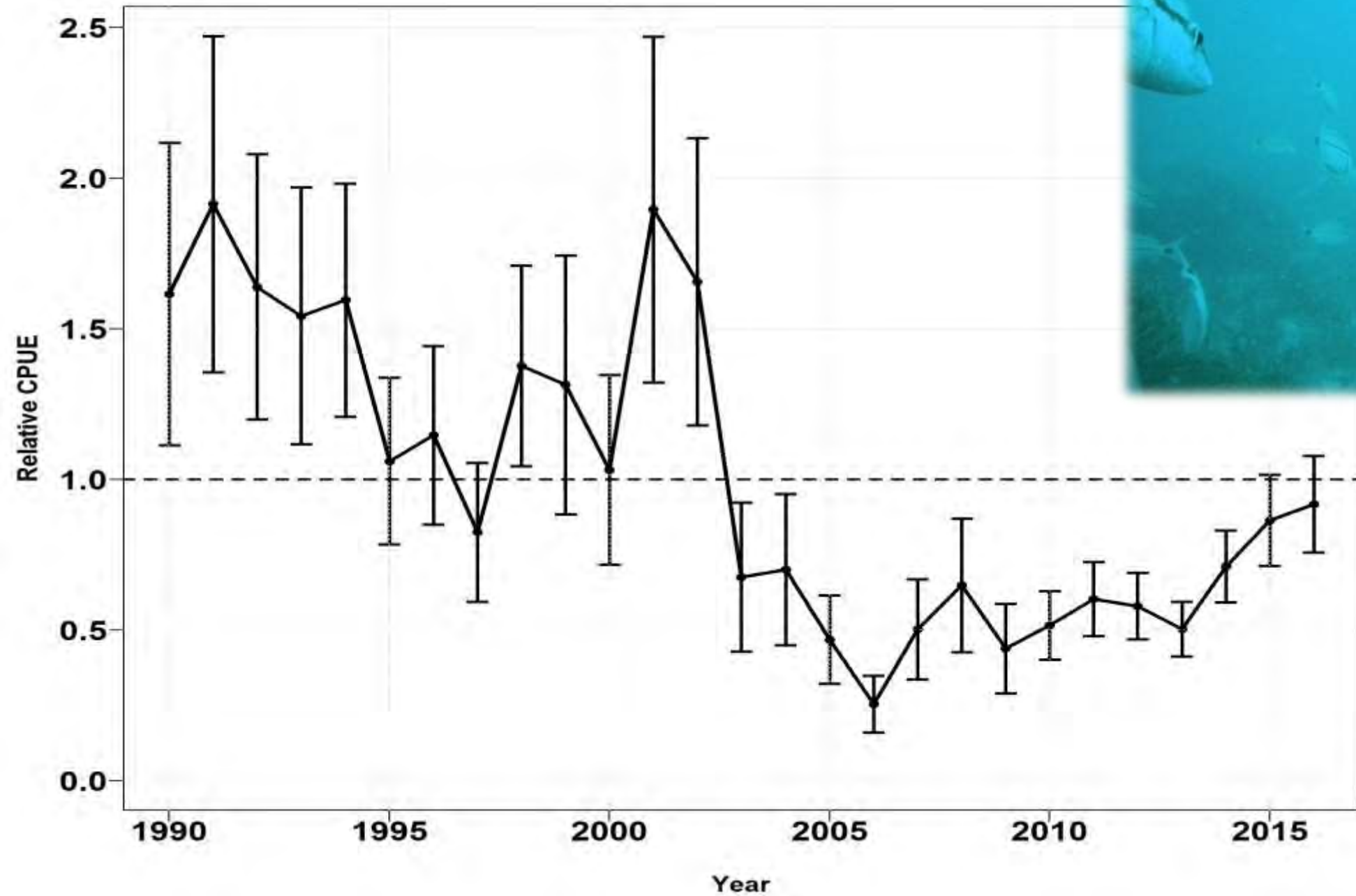




# Gray Triggerfish - Chevron Video Trap

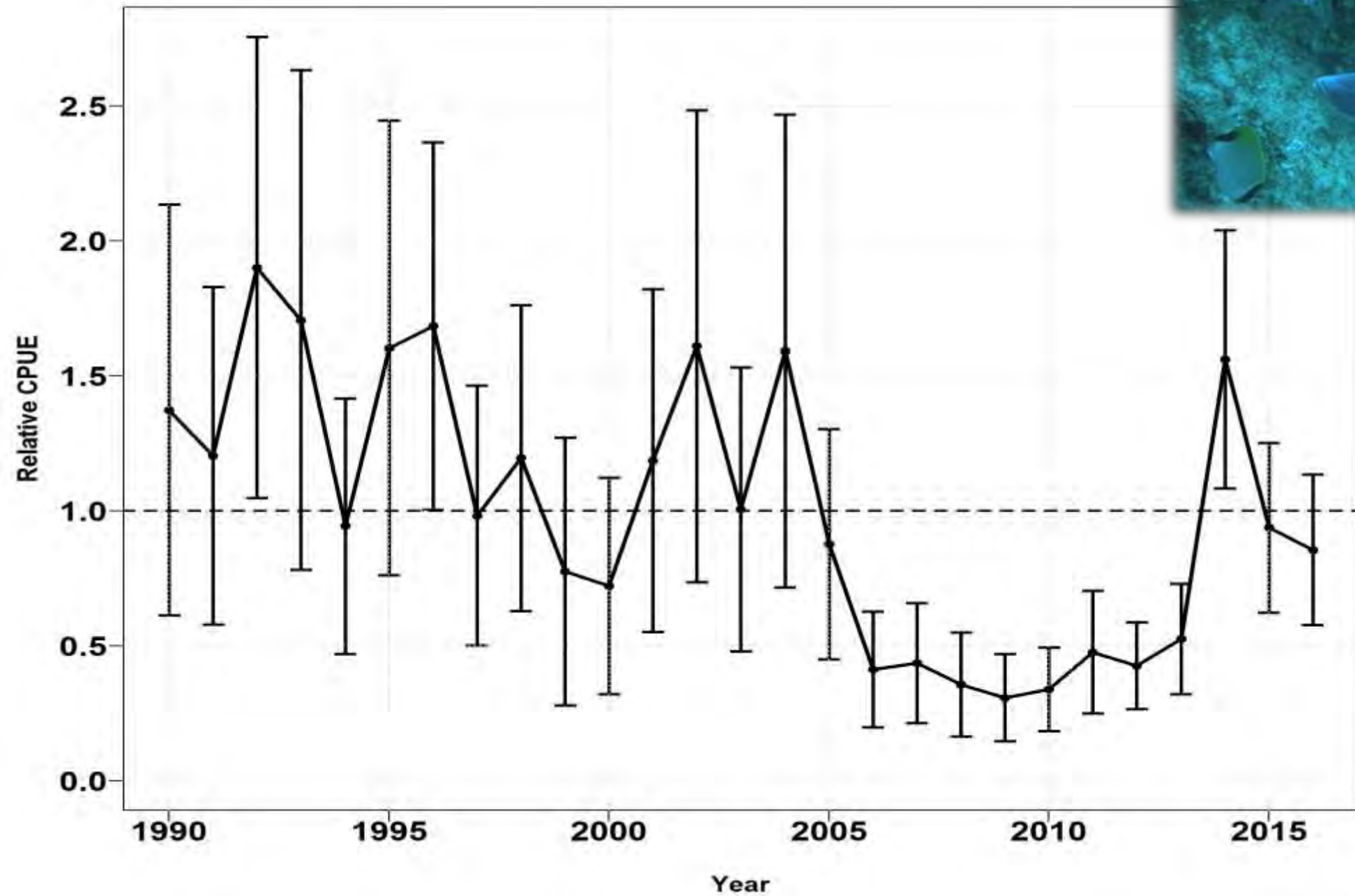


# Tomtate - Chevron Video Trap

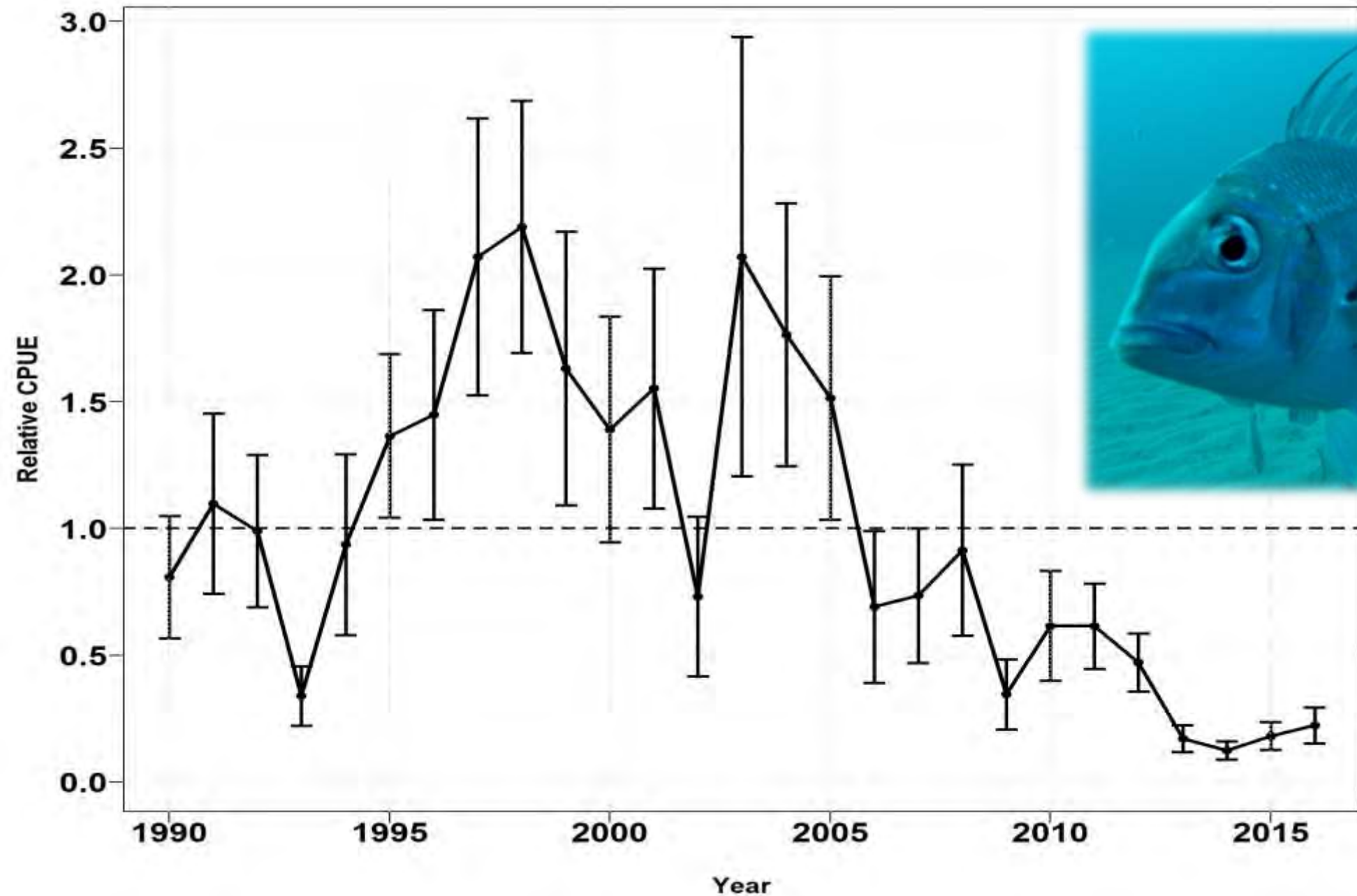




# White Grunt - Chevron Video Trap

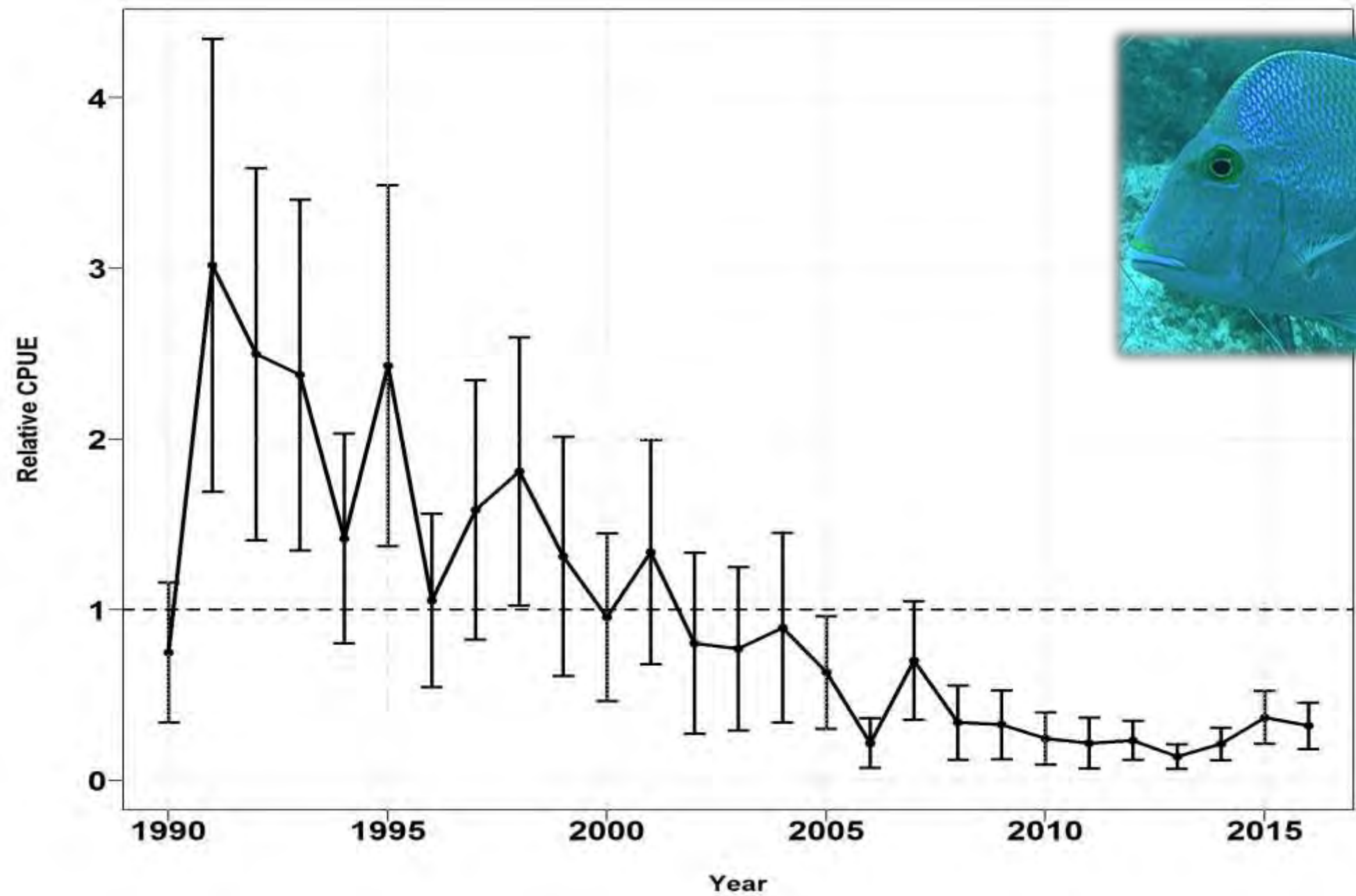


# *Stenotomus* sp. - Chevron Video Trap

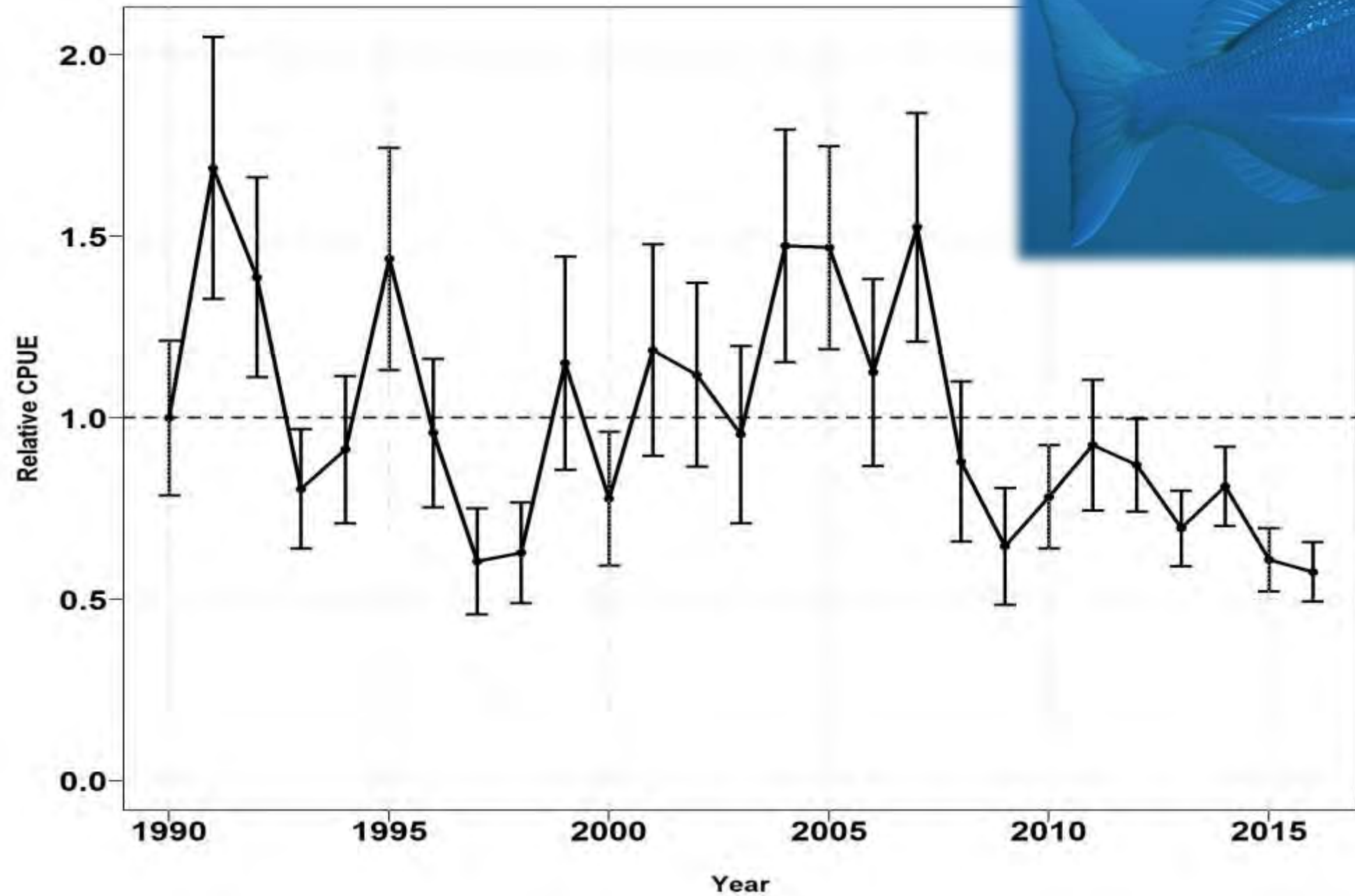




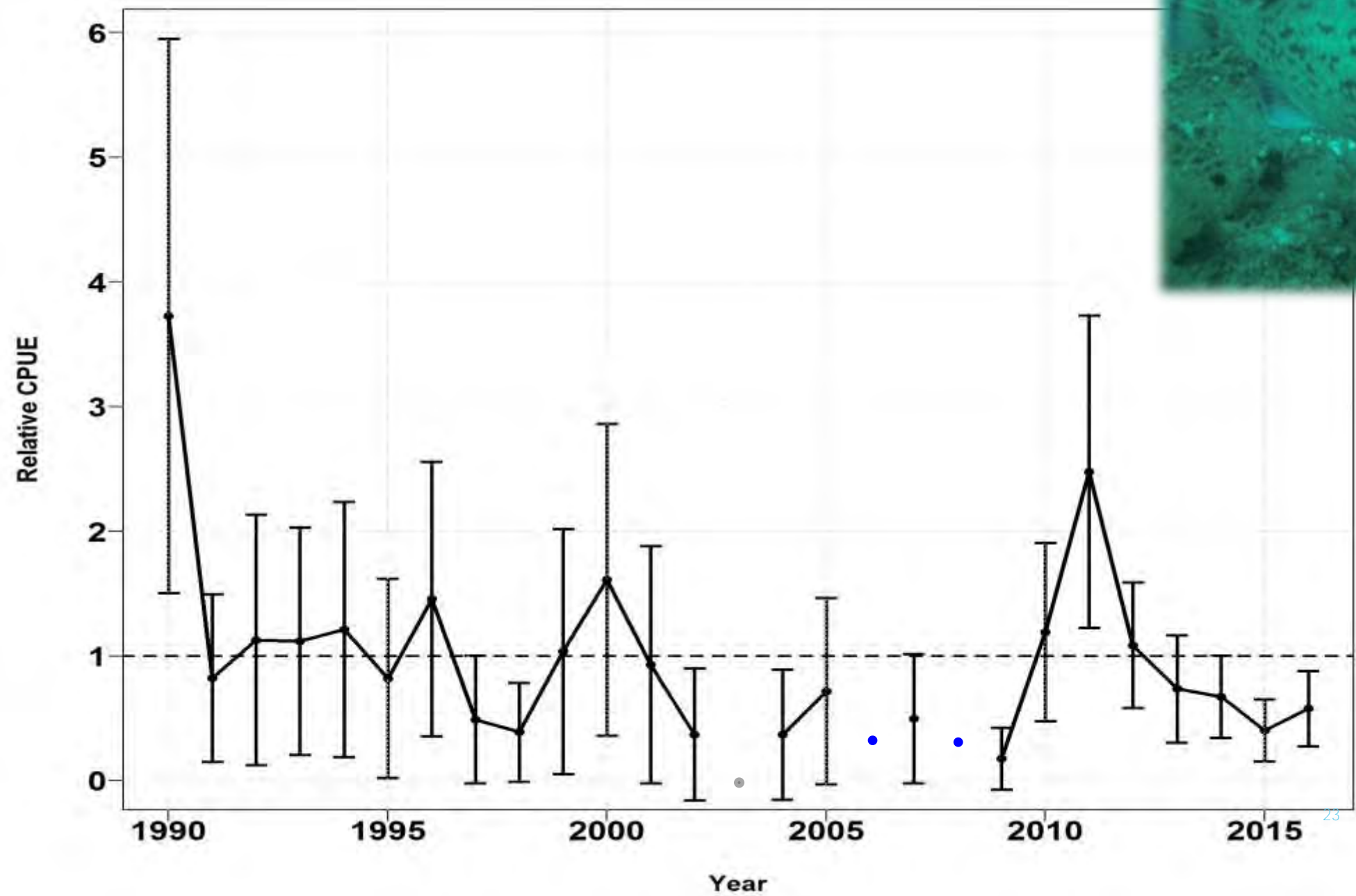
# Knobbed Porgy - Chevron Video Trap



# Red Porgy - Chevron Video Trap

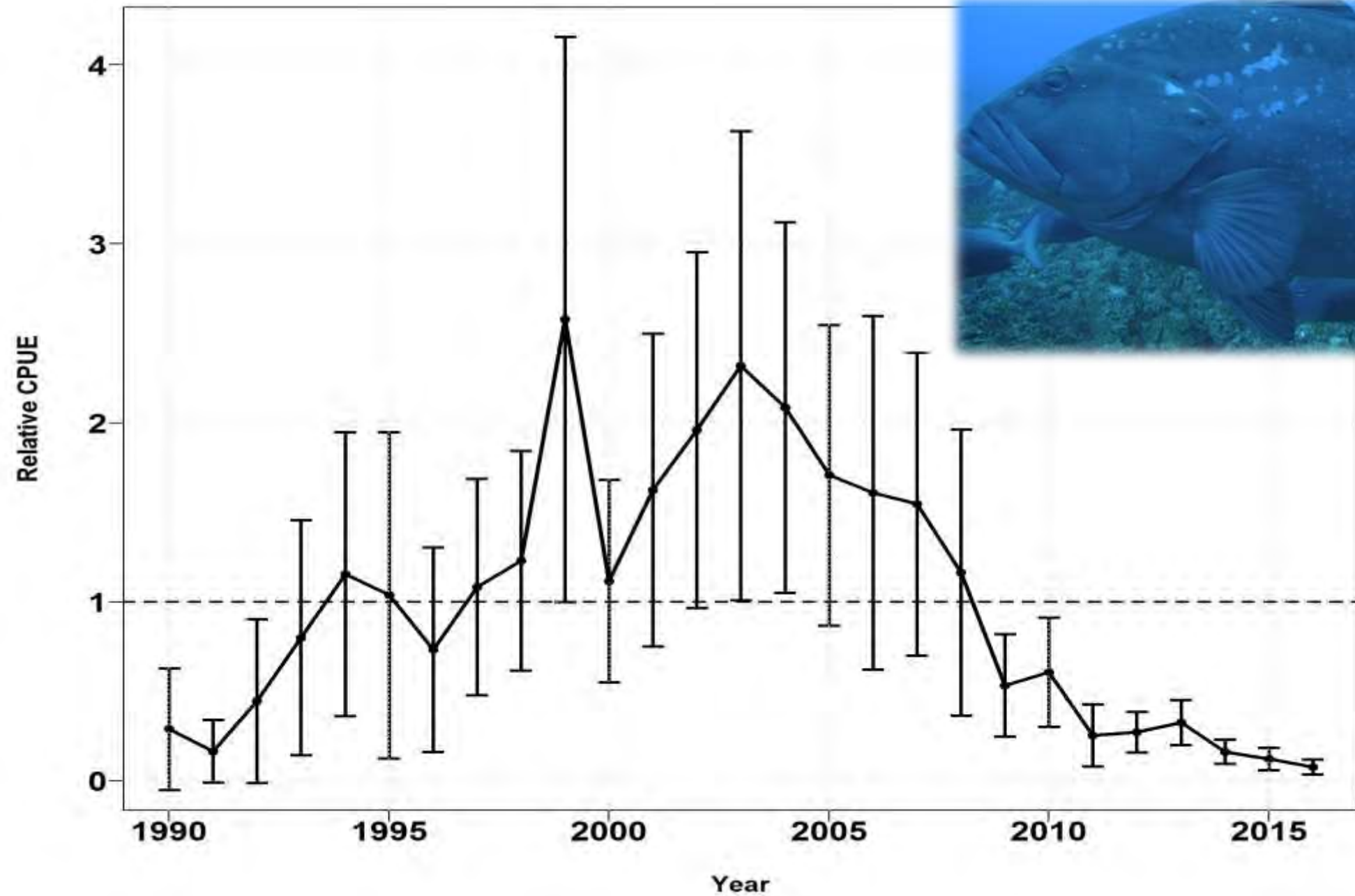


# Gag - Chevron Video Trap

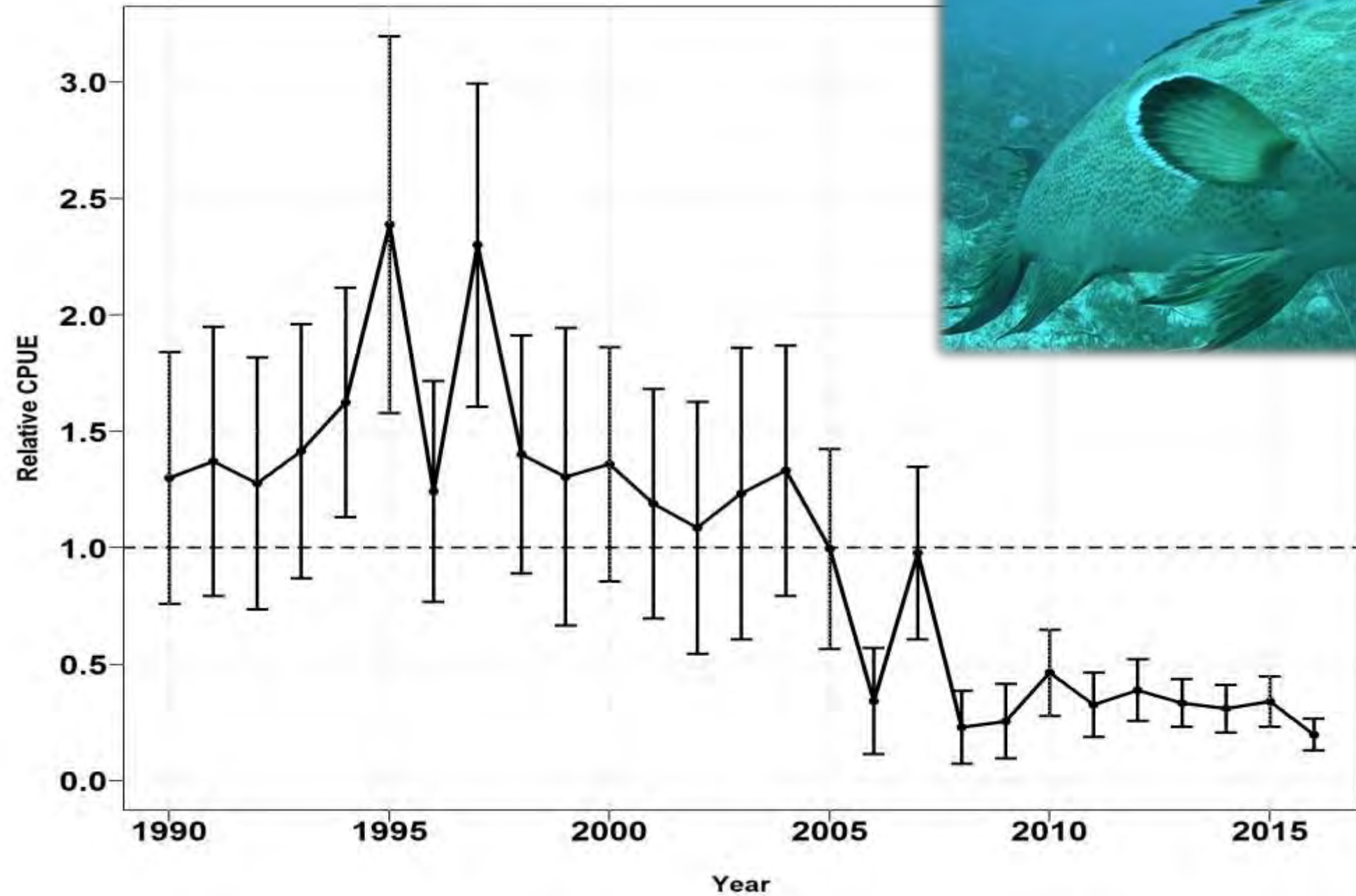




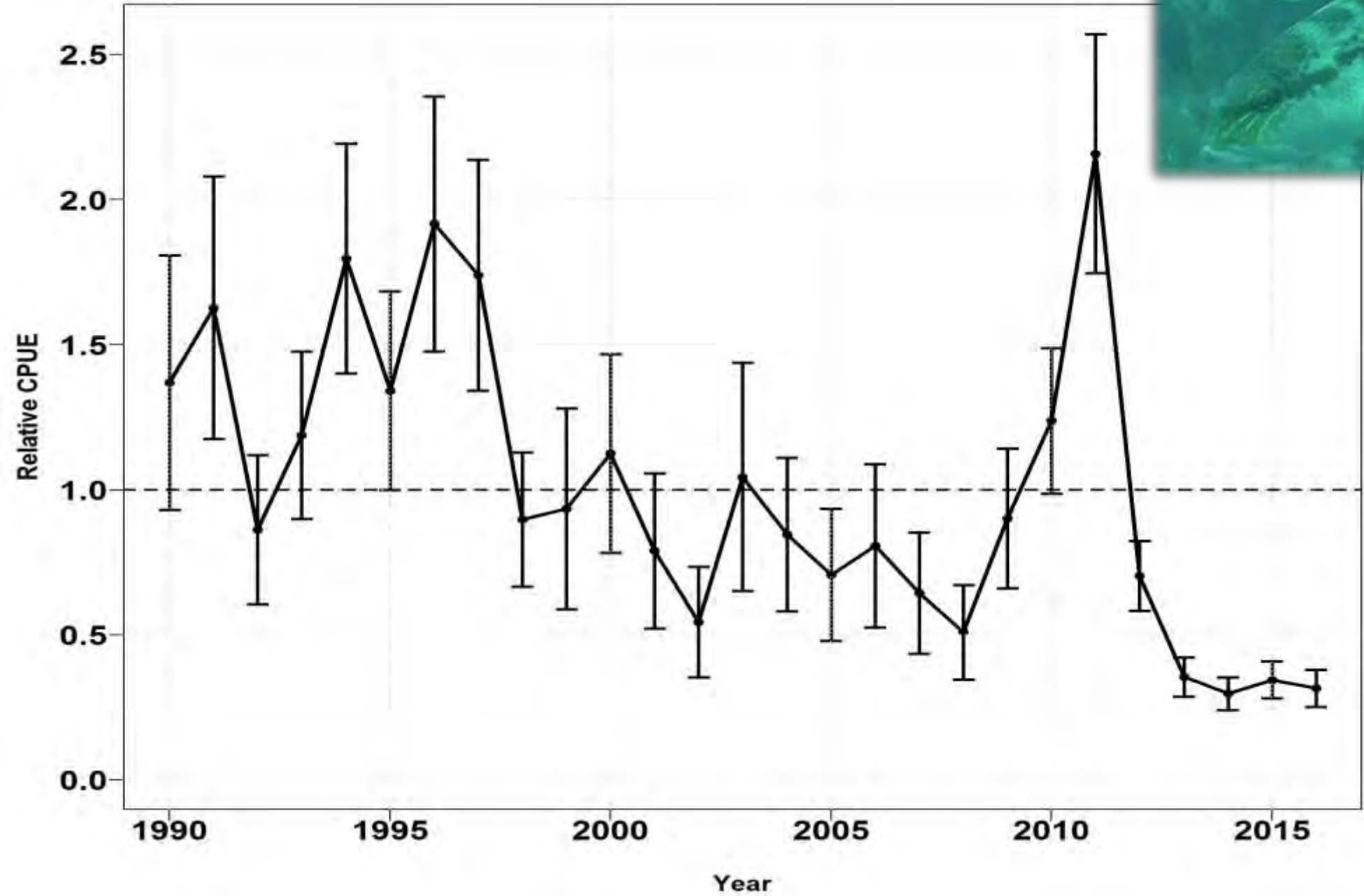
# Red Grouper - Chevron Video Trap



# Scamp - Chevron Video Trap

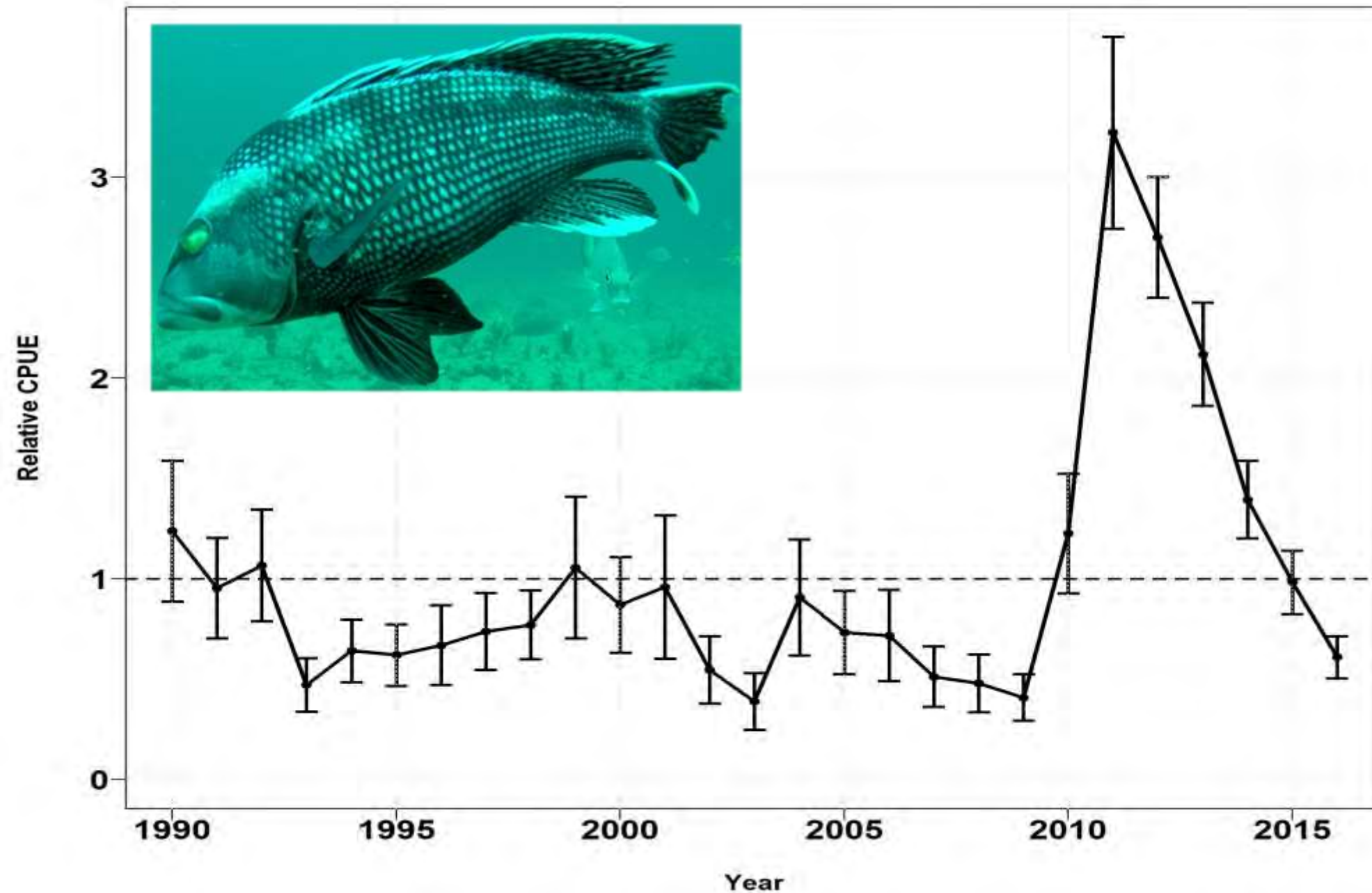


# Bank Sea Bass - Chevron Video Trap

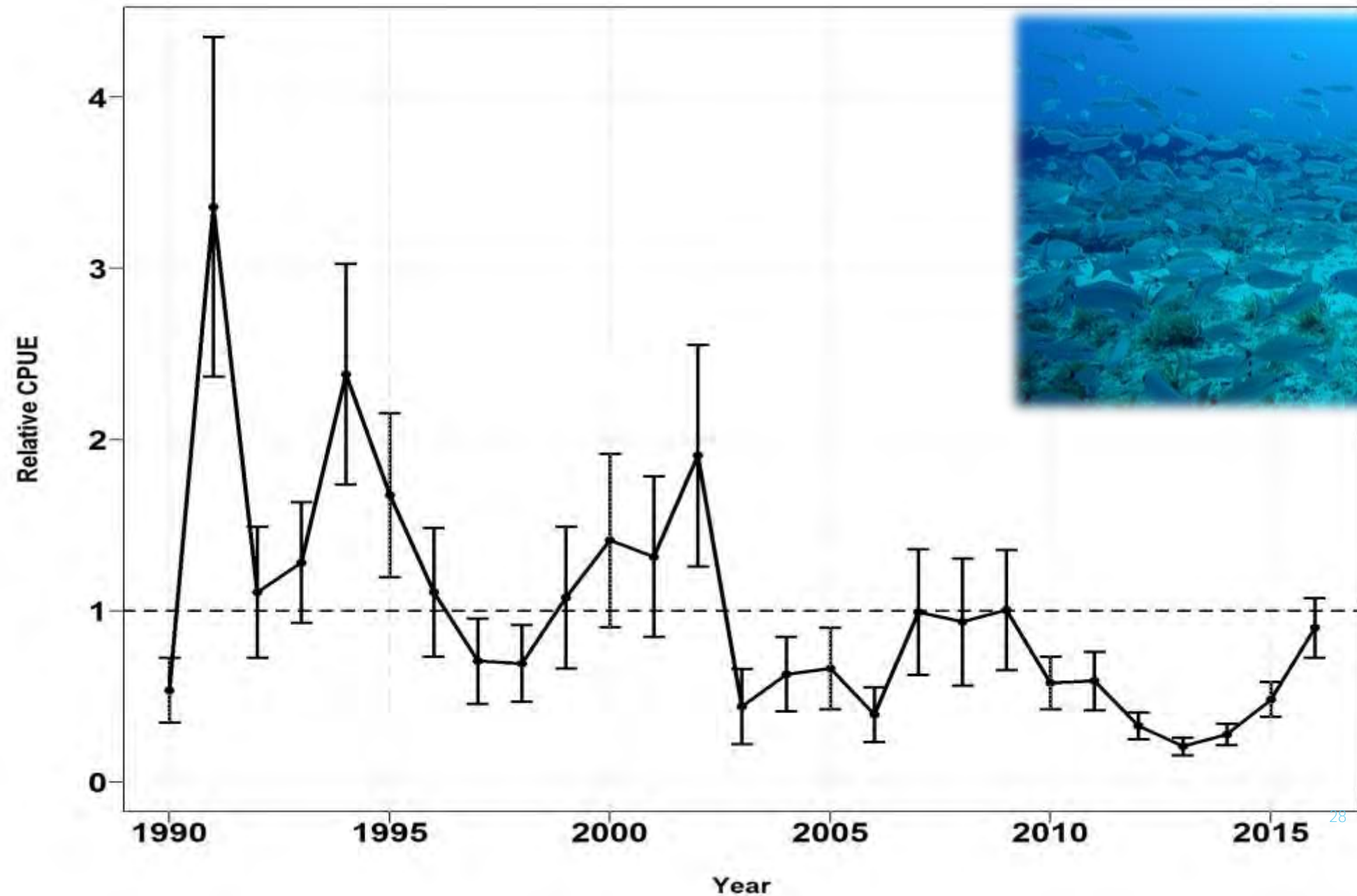




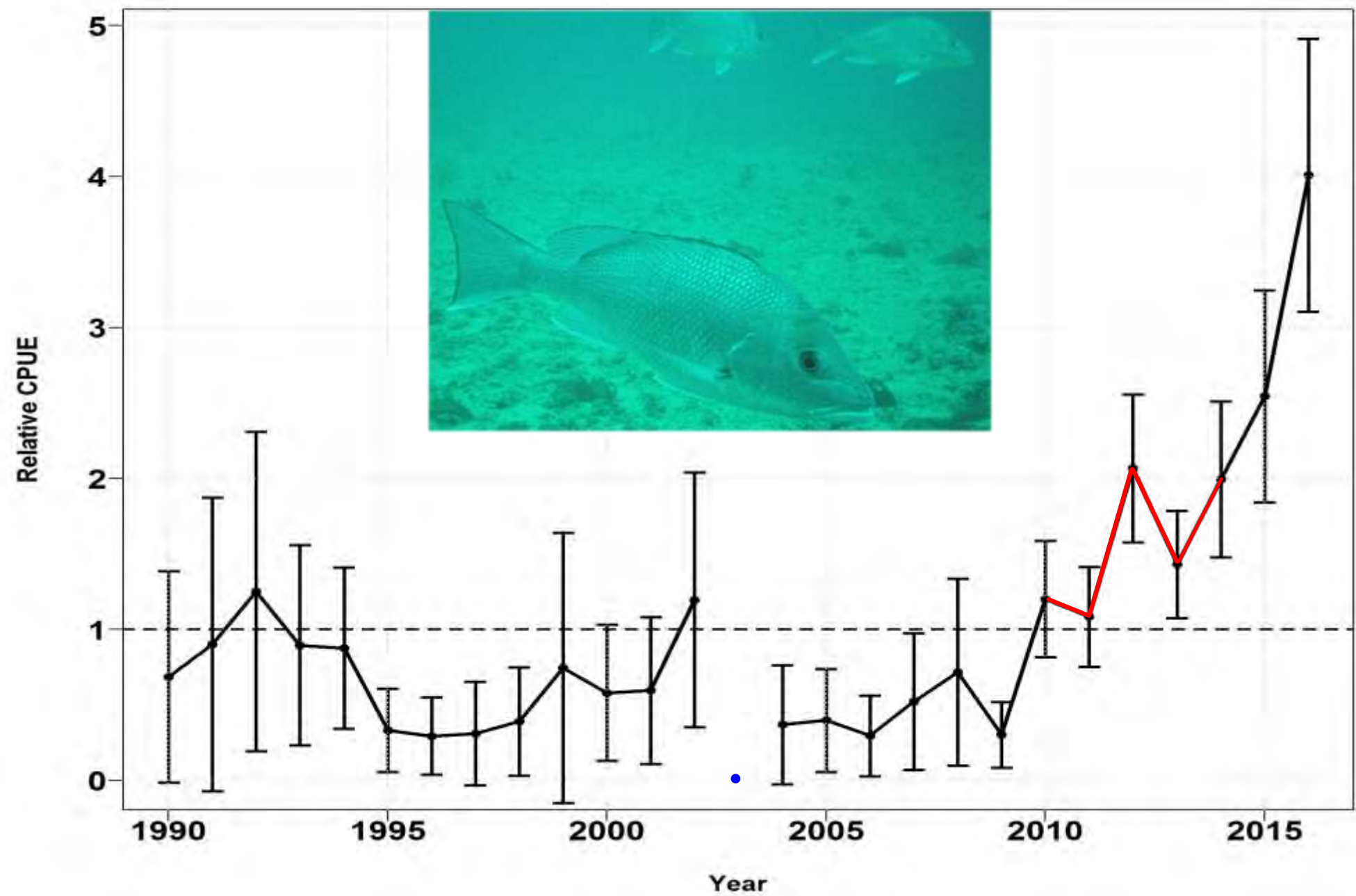
# Black Sea Bass - Chevron Video Trap



# Vermilion Snapper - Chevron Video Trap



# Red Snapper - Chevron Video Trap





# 2017 Reef Fish Monitoring update

Sampling Season:

April 24<sup>th</sup> - October 20<sup>th</sup> (2 cruises completed)

MARMAP and SEAMAP-SA funding:

July 1, 2017 - June 30, 2018: **unknown**

2017 trends report:

Use Zero Inflated Negative Binomial (ZINB)  
methodology for all species





## Acknowledgements:

Walter Bublely,  
Joseph Ballenger,  
Tracey Smart

MARMAP/SEAMAP-SA/SEFIS  
Staff & Students  
Research Vessel Crews

Past and present







Questions?