



# **South Atlantic States Pilot Project: Charterboat Electronic Reporting**

Co-PI: Dr. Mike Errigo, SAFMC

Co-PI: Francine Karp, Harbor Light Software, Inc.



# Project Background

- 4 major components
  1. Electronic logbook for charterboat captains to log catch
  2. Reporting tool for electronic dockside validation of trip reports
  3. Electronic measuring boards to be used for discards on trips and during dockside interviews
  4. Phone app allowing law enforcement officers to check reporting compliance



# Project Update

- Component 1: Electronic logbook - eTRIPS/Mobile
  - All software development is complete
  - Data collection from actual trips has begun
  - 48 trip reports submitted by captains using the mobile app
    - 25 submitted since the Dec Meeting update
    - Over 75% of those are from GA and FL
    - Over 75% of those were logged in Feb of this year.
  - Most of the data collection will happen this Spring

Data Element	Trip							
State	GA				FL			
Trip Start Date	2/*/2017				2/*/2017			
Trip Start Time	700				645			
Trip End Date	2/*/2017				2/*/2017			
Trip End Time	1500				1500			
Num Crew	2				2			
Num Anglers	6				4			
Distance	EEZ				EEZ			
Gear	Hook and Line				Hook and Line			
Gear Quantity	6				4			
Fishing Hours	8				9			
Hours/Days	H				H			
Total Gear					4			
Species Caught	Black Sea Bass	Whitebone Porgy	White Grunt	Bluefish	Ballyhoo	Sailfish	King Mackerel	Great Barracuda
Disposition	Food	Food	Food	Food	Bait	Released Alive	Food	Released Alive
Reported Quantity	50	2	3	6	35	2	2	5
Unit Of Measure	CN	CN	CN	CN	CN	CN	CN	CN
Length	33.02	35.56	50.8	33.02	-	182.88	101.6	-
Unit Of Length	CM	CM	CM	CM	CM	CM	CM	CM
Catch Latitude	-	-	-	-	-	-	-	-
Catch Longitude	-	-	-	-	-	-	-	-
Target Species	Black Sea Bass				Sailfish			
Avg Depth (ft)	70				120			
Latitude	*				*			
Longitude	*				*			
Upload Date	2/*/2017				2/*/2017			



# Progress Update

- Component 2: Dockside Intercept/Validation App
  - Development of the validation tool is underway, with collaboration of MRIP/OST
  - Decided to build an electronic version of the current MRIP APAIS survey
    - Following the direction of the ongoing MRIP Validation Pilot in SC
  - Currently developing a working prototype of the app for testing



# Project Update

- Component 3: Electronic measuring boards
  - Work will begin on this component as the Dockside Validation app is developed
- Component 4: Law Enforcement phone app
  - Work on LE tool has not begun yet, but will once more progress has been made on validation app



# Questions?





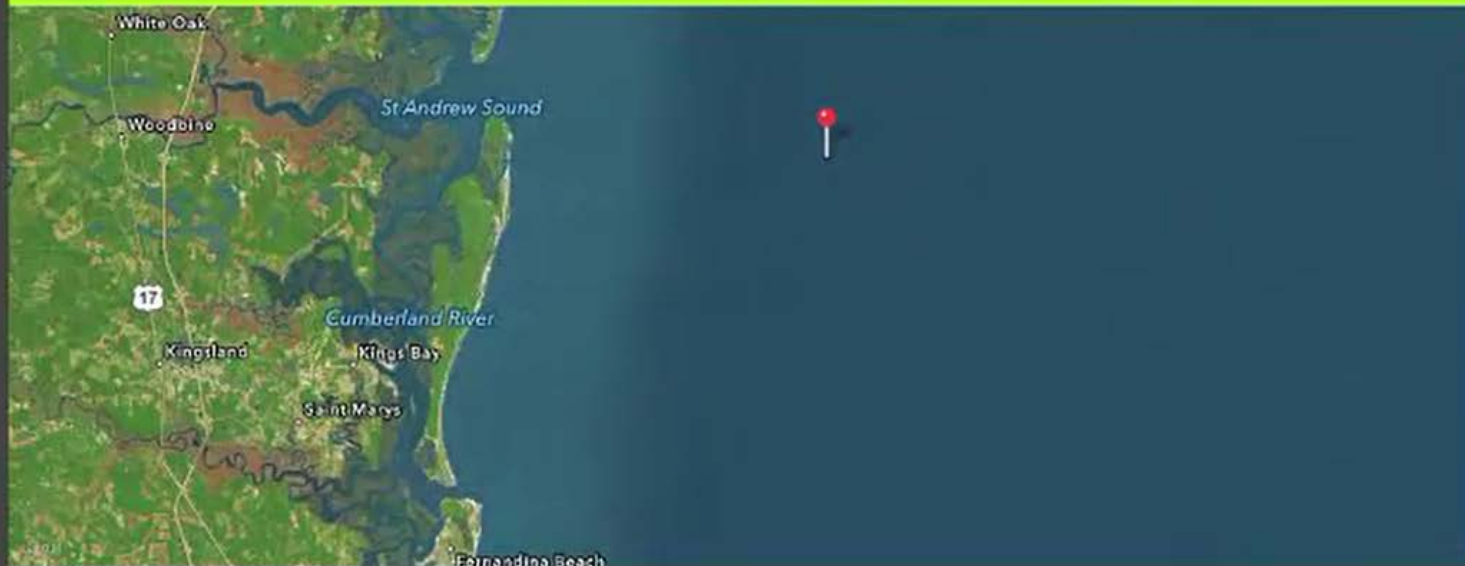
# Dispositions

Dispositions
General: No Catch
General: Food
General: Personal Use
General: Bait
General: Research
Discard due to Regs: Too small
Discard due to Regs: Too large
Discard due to Regs: Quota filled
Discard due to Regs: Closed season
Discard due to Regs: No retention
Not Brought on Board: Dead discard
Not Brought on Board: Released alive
Other: Seized by Law Enforcement





# Location



30° 56' 43.6, -81° 8' 28.3





# ← Intercepts ☰

Would you say you were fishing from...

Pier

Jetty, Breakwater

Other Man-made Structure

Headboat

Private Boat

Dock

Bridge, Causeway

Beach or Bank

Charterboat 

Rental Boat



 Group  
Group 2

 Angler  
Angler 4





# ← Intercepts ☰

## Is this vessel on the list?

Yes, vessel is on the list

Vessel name or registration

Vessel has no name  
(record Registration Number to determine "on list" status)

Navigation bar with icons: back, microphone, pencil, + Group 2, Angler 4, +, forward





← Inte **Counts** ☰

Angler Trips Counted (Not Interviewed)	0	⊖	⊕
Initial Refusal	0	⊖	⊕
Language Barrier	0	⊖	⊕
Not Done (Shore Mode)	0	⊖	⊕
Not Recreational	3	⊖	⊕
Not Salt Water	0	⊖	⊕
Not Fin Fishing	0	⊖	⊕
Not U.S.	0	⊖	⊕

✓

⏪ ⏩





# Intercepts



Did you catch any fish that are not here for me to look at? For example, any that you may have thrown back or used for bait?

Catch U

## Type 2 Unavailable Catch

Quantity	Species
1	Species 2
Disposition	
Eaten/plan to eat	

## Disposition

Throw back alive

Throw back alive

Eaten/plan to eat

Used/plan to use for bait

Sold/plan to sell

Thrown back dead/plan to throw away

Some other purpose



Group Group 2



May I look at your fish? What do you plan to do with the MAJORITY of each species?

Individual

### Type 3 Available Catch

Quantity

1

Species

Species 1

Disposition

Length (MM)

0

Weight (KG)

0



Group  
Group 2



Angler  
Angler 4

