



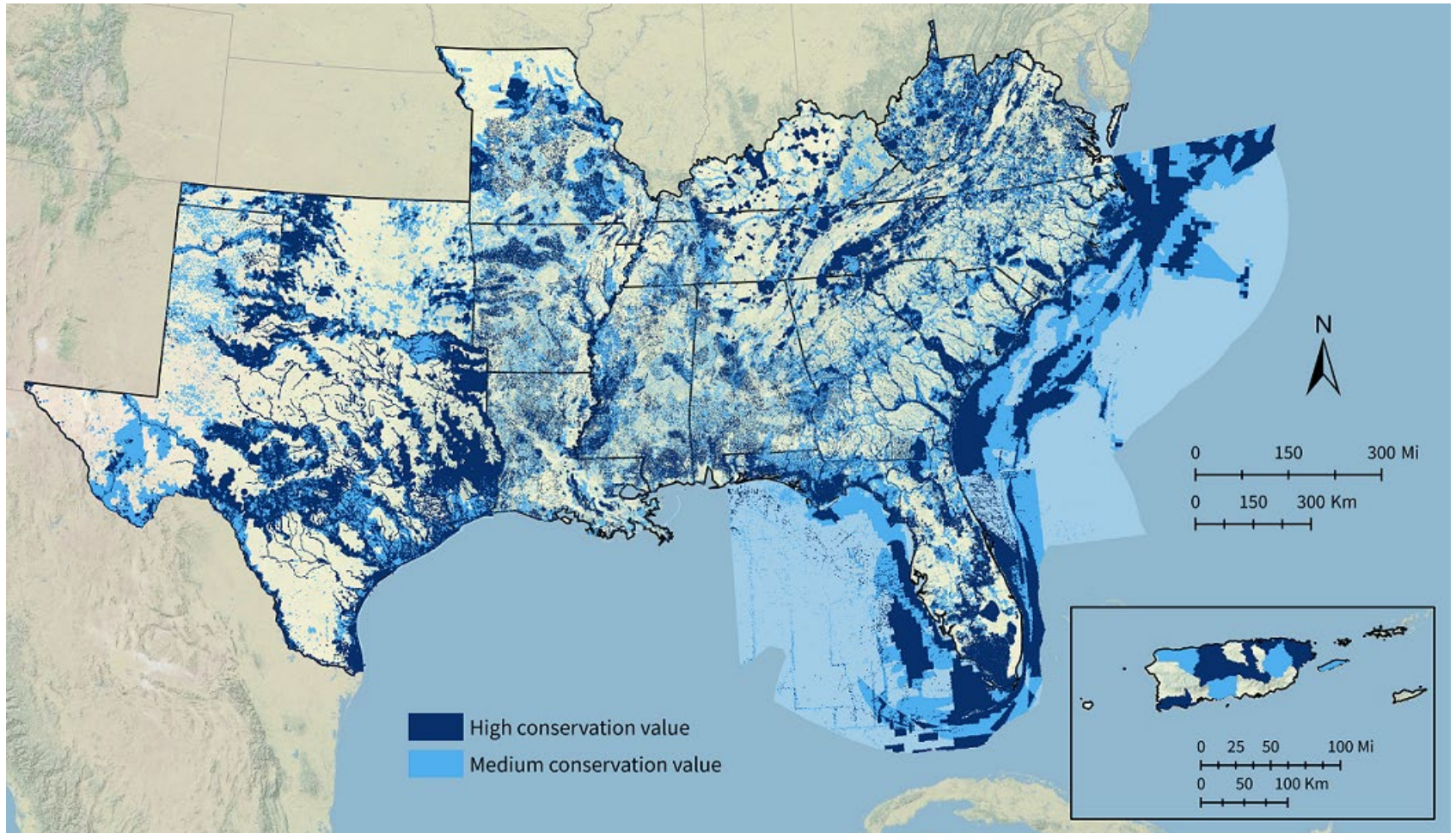
Update on Southeast Conservation Blueprint

Rua Mordecai, Blueprint Coordinator

Blueprint background

- Living, spatial plan that identifies important places for conservation and restoration
- Helping more than 225 people from at least 100 organizations bring in new funding and inform their conservation decisions
- Set up to help bring in new conservation funding to the South and help us all use our current conservation resources more efficiently

Southeast Blueprint 2020



The Southeast Conservation Blueprint

- **High conservation value:** areas that are most important for ecosystem health, function, and connectivity
- **Medium conservation value:** areas that might require restoration, but are important for buffering high value areas and connectivity

Keep in mind as you explore the Blueprint...

- It identifies potential areas for a range of conservation actions, such as management, economic incentives, and protection
- It's a work in progress that regularly incorporates new data, partner input, and information about on-the-ground conditions
- It provides a regional perspective and can be used in combination with local data and knowledge

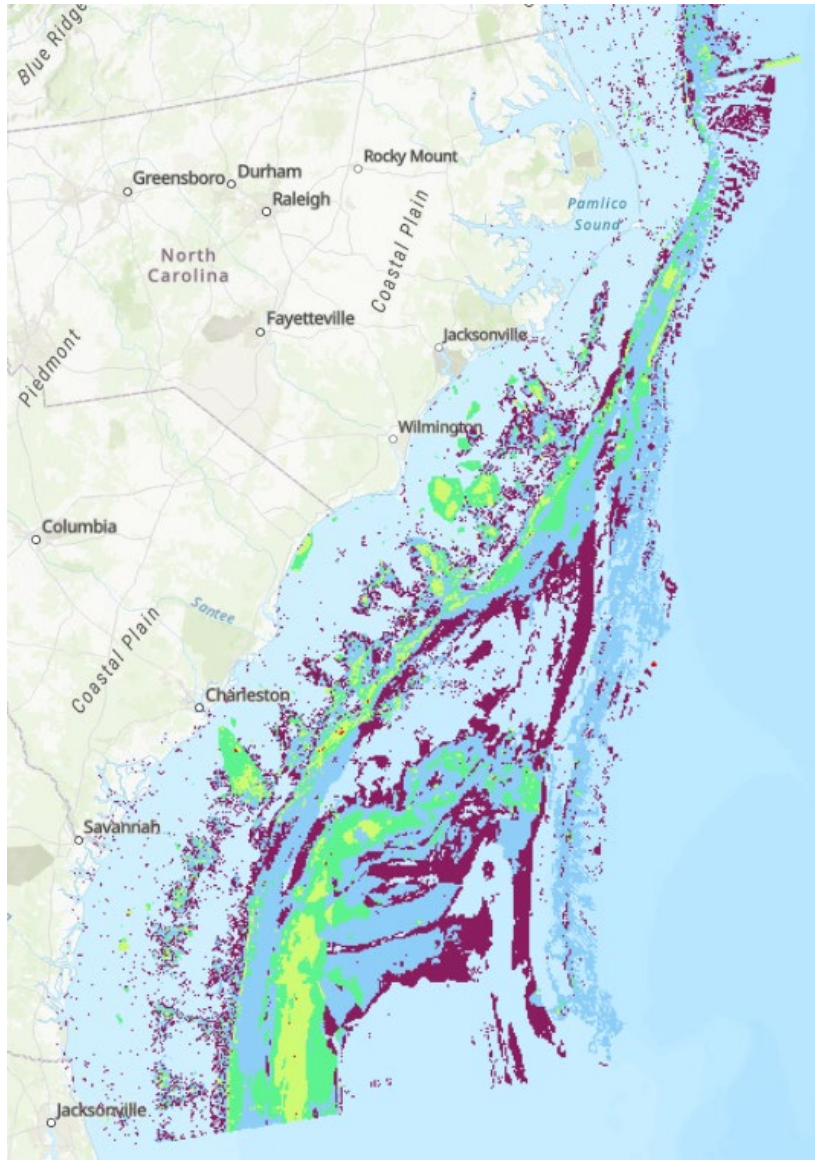
Looking closer at what's in the Blueprint...

- Let's go to the soon to be released Southeast Blueprint viewer

Things in the works for 2021 Blueprint

- Improved hardbottom and deep sea coral indicator
- More actionable approach to nearshore priorities
- Updated Marine mammal indicator
- Alignment of fish priorities with ACFHP
- Improved approach to inland salt marsh migration corridors

Hardbottom & deep sea coral suitability



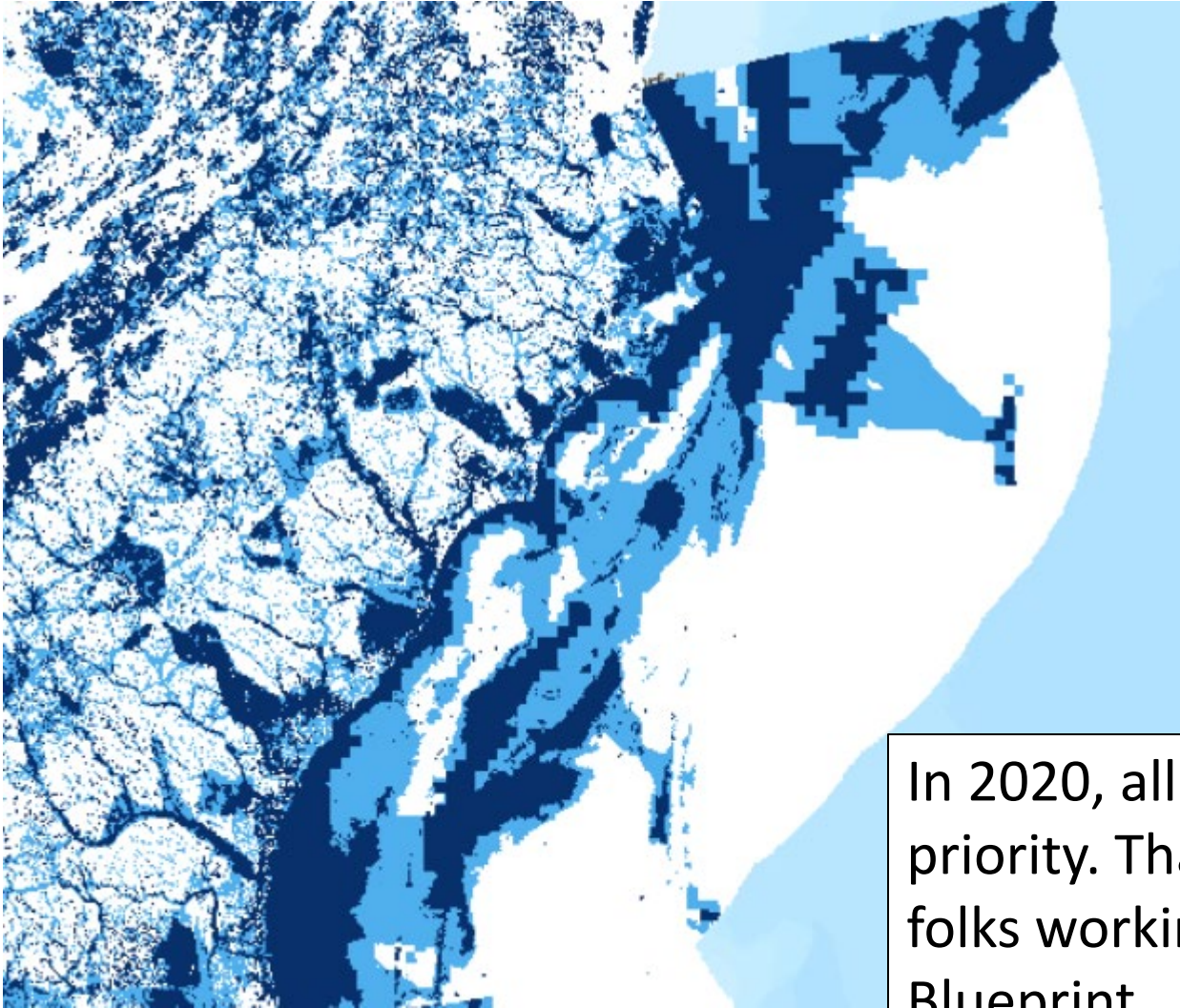
- Updated indicator combines
 - NOAA coral models
 - TNC South Atlantic Bight Assessment
 - NOAA unpublished hardbottom assessment
 - Known coral locations

HardbottomAndDeepSeaCoral.tif

descript

- 1 = Low suitability for coral or hardbottom
- 2 = Medium suitability for coral or hardbottom
- 3 = High suitability for coral or hardbottom
- 4 = Very high suitability for coral or hardbottom
- 5 = Observed coral or hardbottom

Improving nearshore priorities



In 2020, all nearshore was a priority. That makes it hard for folks working there to use the Blueprint

Improving nearshore priorities



- For the 2021 draft, we extended coastal subregions into the ocean
- This better accounts for coastal ecosystems and not everything will be a priority in that nearshore area
- We are also testing out splitting the rest of the marine area into ecoregions

Next steps for 2021 Blueprint

- Online workshops to review draft in late May / early June
- Working on improvements from workshop until August
- South Atlantic Blueprint update final August 15
- Southeast Blueprint update final in October

Things in the works for 2022

- Incorporation of new SAFMC modeling data
- Including potential future locations of currents/eddies?
- New NOAA coral models?