



Socio-Economic Profile of Fisheries for Species Managed by the South Atlantic Fishery Management Council

**Socioeconomic Panel Meeting
Charleston, South Carolina
February 2018**

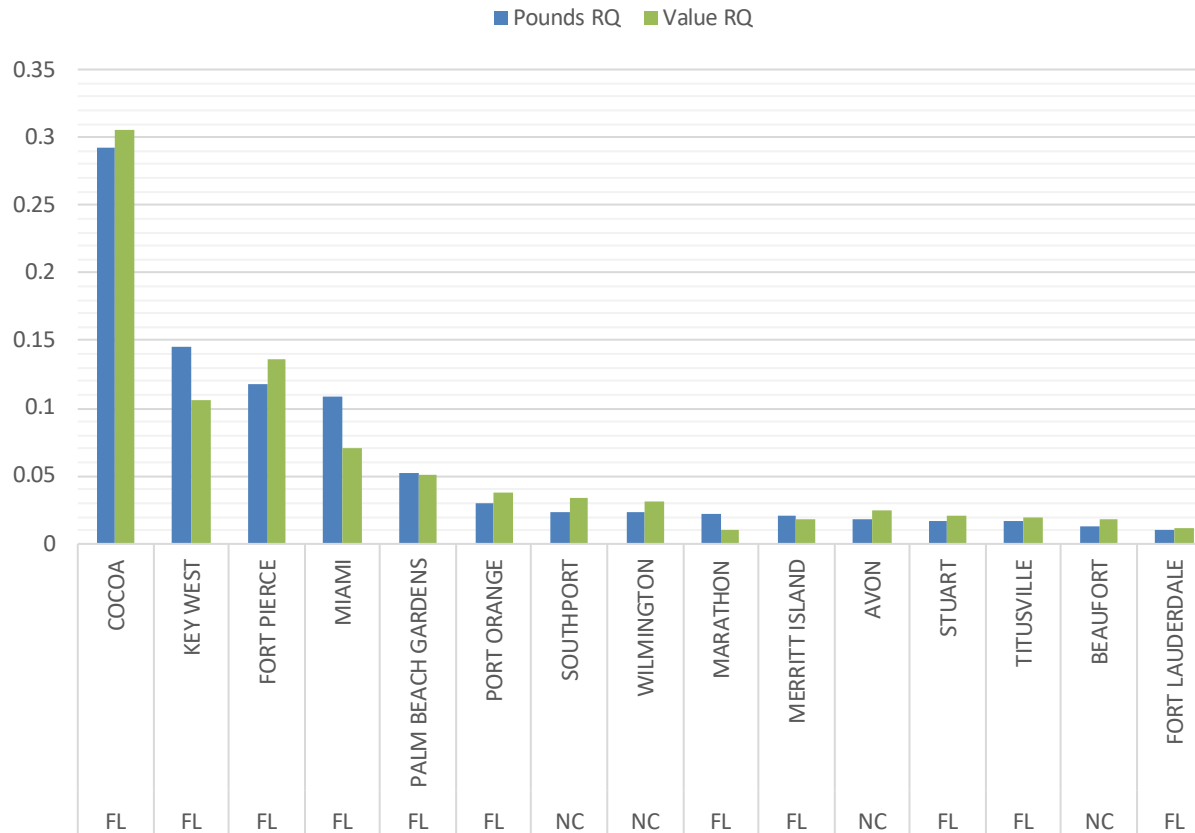
Purpose

- To provide comprehensive information on South Atlantic Council managed species, including:
 - Communities
 - Fishing trends
 - Imports
 - Infrastructure
 - Safety
- Enhancing the socioeconomic sections of the FEP to provide a more comprehensive understanding of the human environment.



Section 1: Chapters by FMPs

Description of Major Fishing Communities



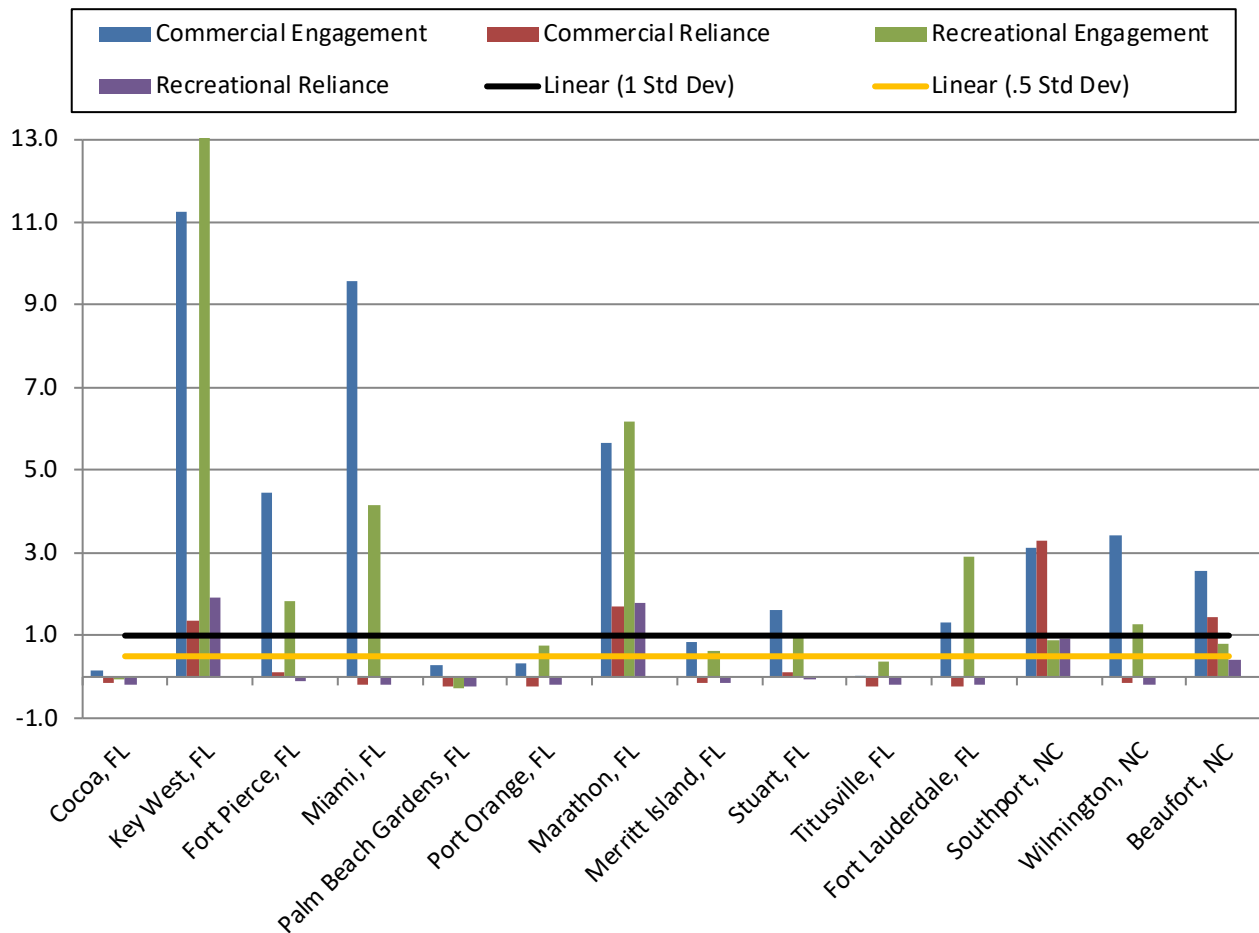
Top fifteen South Atlantic communities ranked by pounds and value regional quotient (RQ) of king mackerel.

Source: SERO,
Community ALS



Section 1: Chapters by FMPs

Description of Major Fishing Communities



Commercial and recreational reliance and engagement for South Atlantic communities with the top regional quotients for king mackerel.

Source: SERO Social Indicator Database

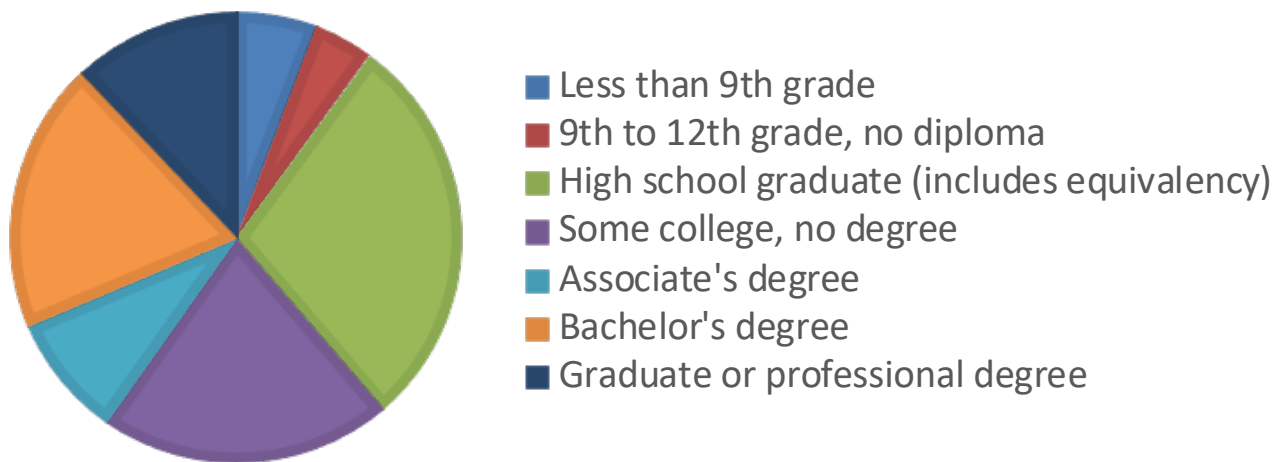


Section 1: Chapters by FMPs

Description of Major Fishing Communities

Key West

- Population: 24,649
- 52% age 40 or older
- Median Household Income: \$58,494

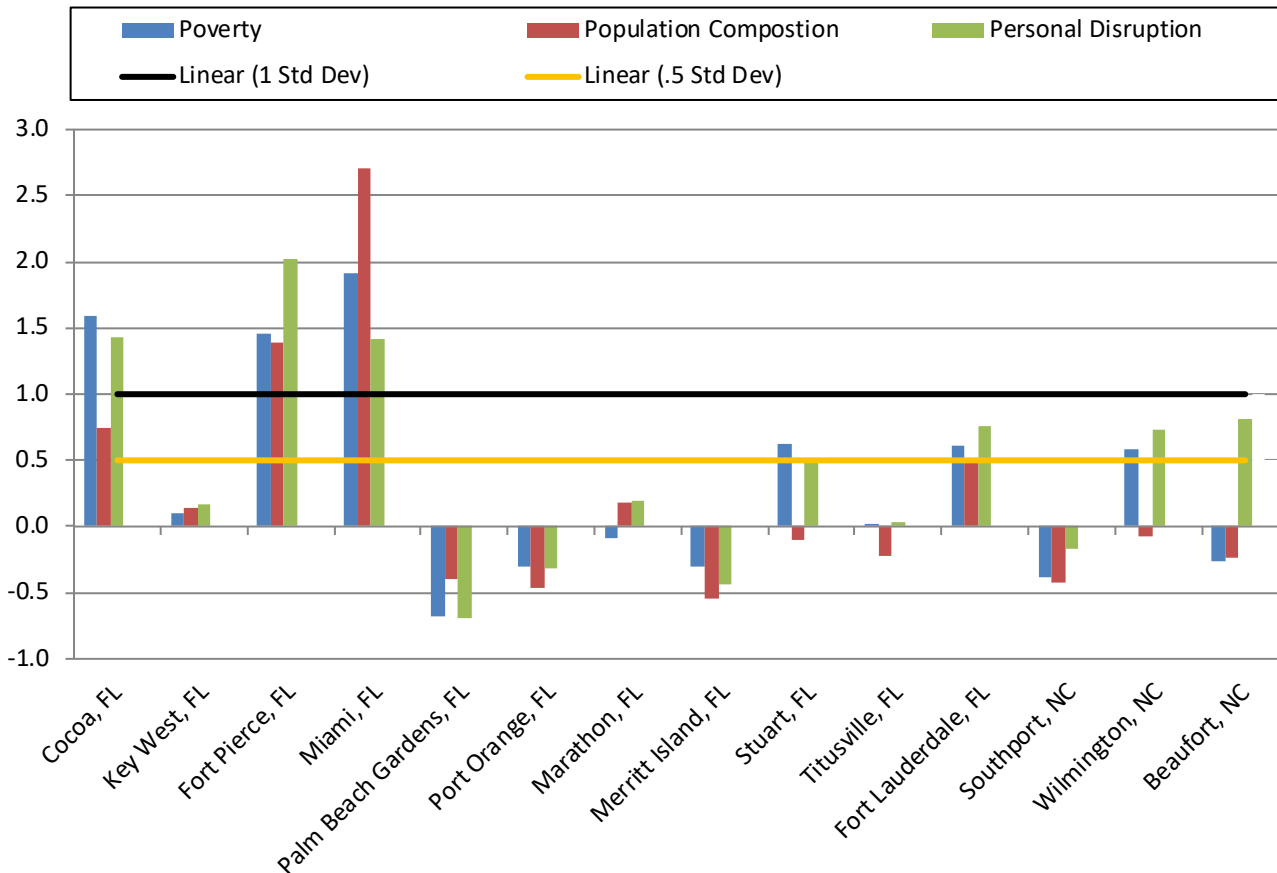


Source: U.S. Census Bureau



Section 1: Chapters by FMPs

Description of Major Fishing Communities



Social vulnerability indices for fifteen South Atlantic communities with the top regional quotients for king mackerel.

Gentrification Indices:

- Retire Migration
- Urban Sprawl
- Natural Amenities
- Housing Disruption

Source: SERO Social Indicator Database



Section 1: Chapters by FMPs

- Fishing Trends

1. Effort

Year	# of vessels landing king mackerel	# of trips landing king mackerel	Total king mackerel landings	Landings of other species jointly caught w/ king mackerel	# of trips only catching other species	Landings of other species on trips w/o king mackerel
2010	277	1,710	1,859,629	692,630	1,868	3,414,763
2011	290	2,006	2,194,213	589,794	2,248	4,827,227
2012	287	2,162	1,932,385	597,163	2,074	4,289,260
2013	267	2,161	1,932,985	661,216	1,731	3,882,970
2014	251	2,055	1,923,477	615,797	1,659	3,679,388
Average	274	2,019	1,968,538	631,320	1,916	4,018,722

Commercial vessels and trips with king mackerel landings by weight (lb gw), Gulf, 2010–2014.

Source: SEFSC SSRG Socioeconomic Panel Data.



Section 1: Chapters by FMPs

- Fishing Trends

- Landings

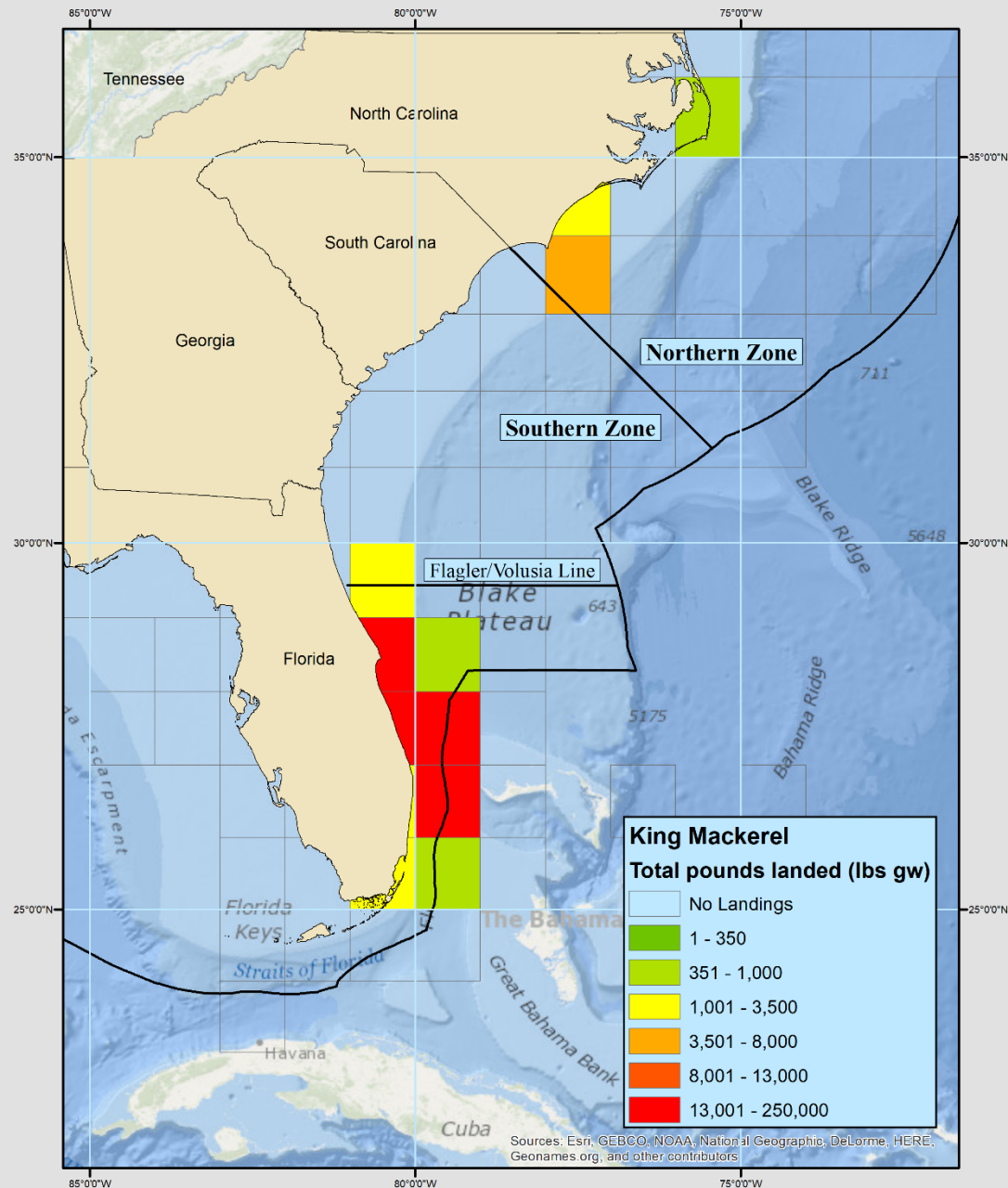
Fishing Year	Atlantic Migratory Group		
	Pounds	Revenues	Price/lb
2003/04	1,860,064	\$3,471,749	\$1.87
2004/05	2,776,748	\$5,487,732	\$1.98
2005/06	2,249,711	\$4,861,494	\$2.16
2006/07	2,992,672	\$6,041,002	\$2.02
2007/08	2,664,751	\$5,734,915	\$2.15
2008/09	3,105,889	\$6,114,044	\$1.97
2009/10	3,561,139	\$6,506,967	\$1.83
2010/11	3,402,677	\$6,118,822	\$1.80
2011/12	2,052,139	\$5,048,520	\$2.46
2012/13	1,346,459	\$3,612,517	\$2.68
2013/14	1,141,601	\$3,274,106	\$2.87
Avg (2000-14)	2,351,642	\$4,965,704	\$2.11
Avg (2009-14)	2,300,803	\$4,912,186	\$2.13

Commercial king mackerel landings, dockside revenues, and price per pound by migratory group, 2000/01-2013/14. Revenues and price per pound are in 2014 dollars.

Source: SEFSC ACL Database

- Regional/State breakdown
- By gear
- Seasonality

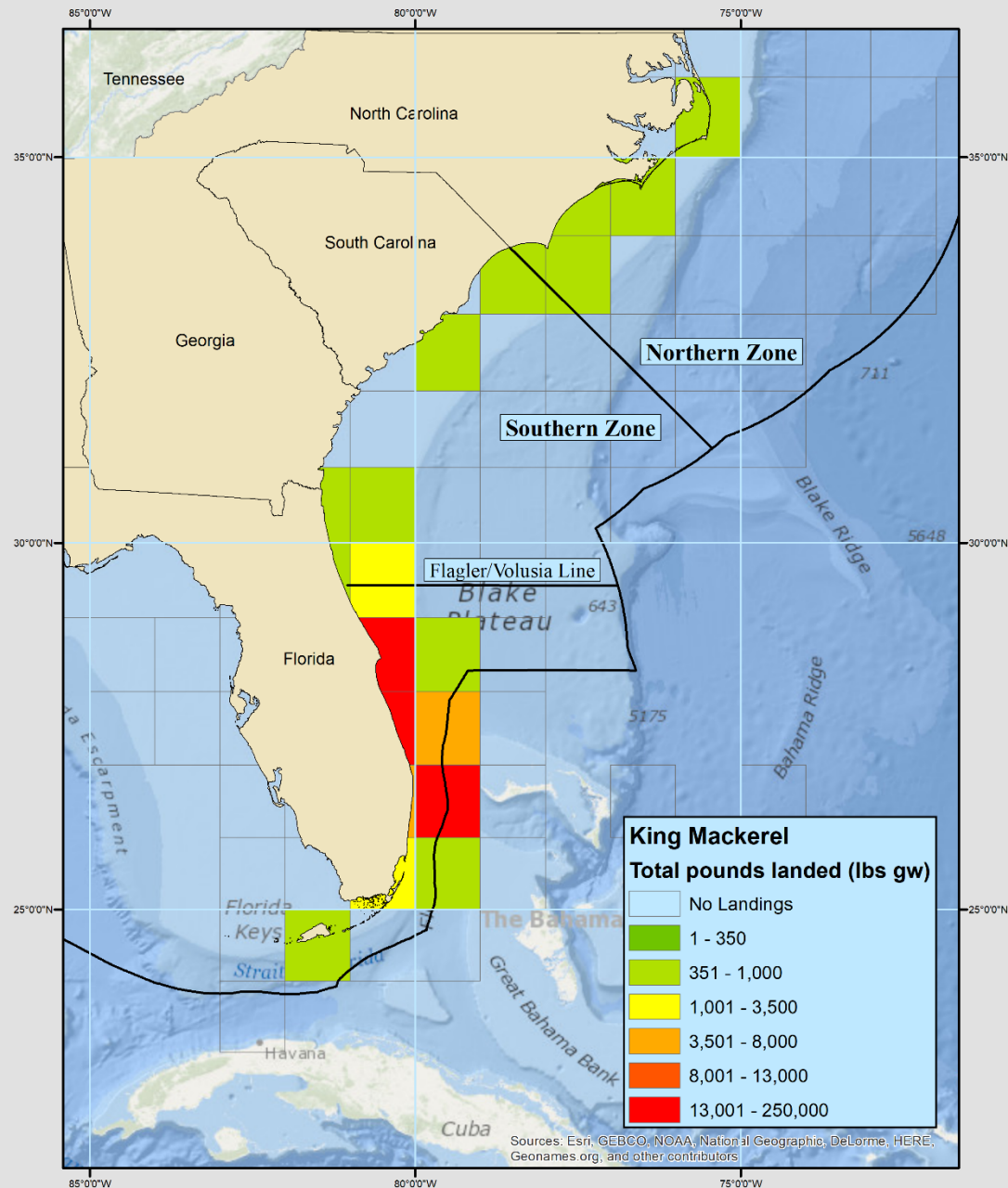




King Mackerel Total Reported Logbook Catch
2015/2016 Season
March

0 80 160 320 Miles

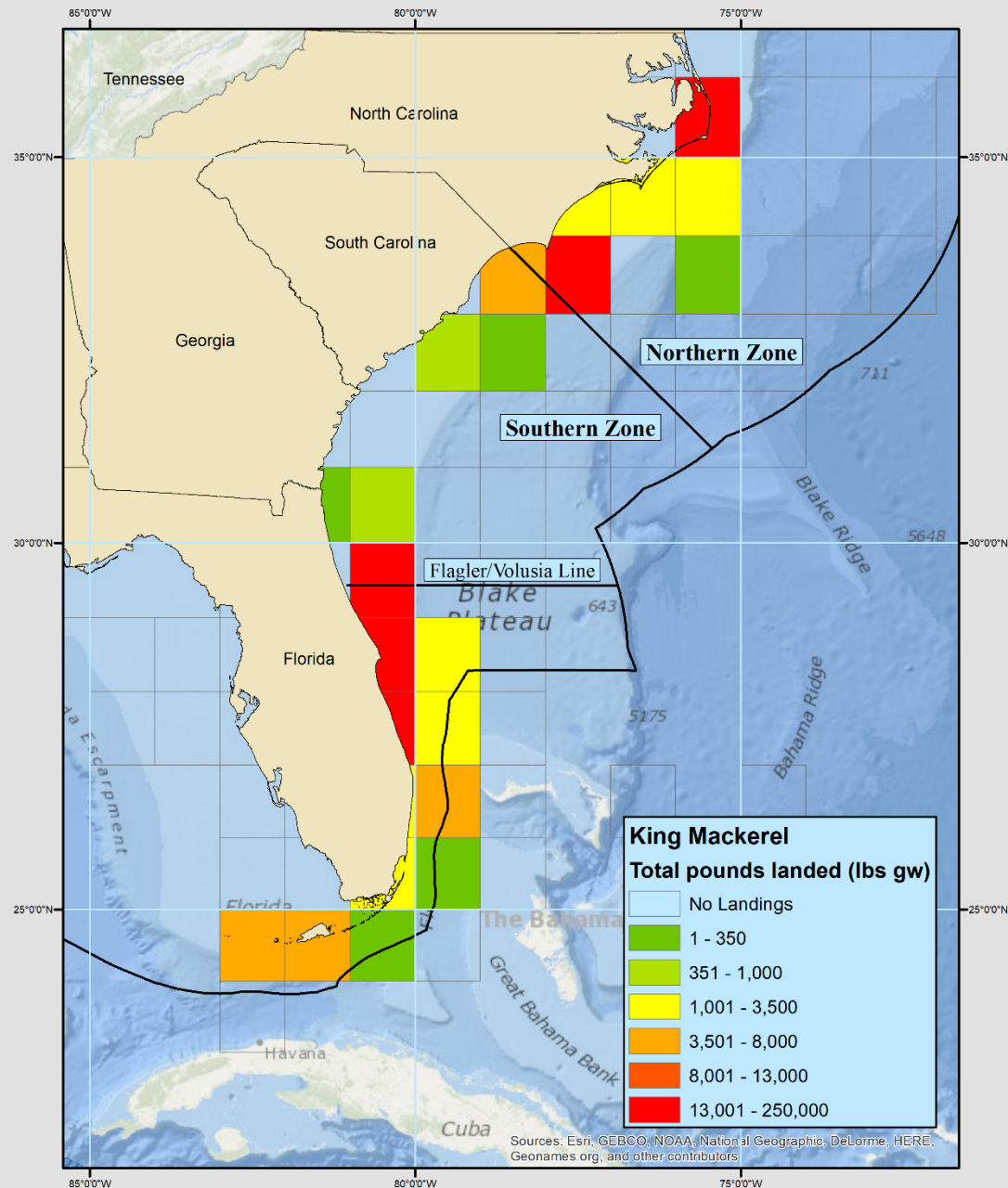




King Mackerel Total Reported Logbook Catch
2015/2016 Season
April - September

0 80 160 320 Miles





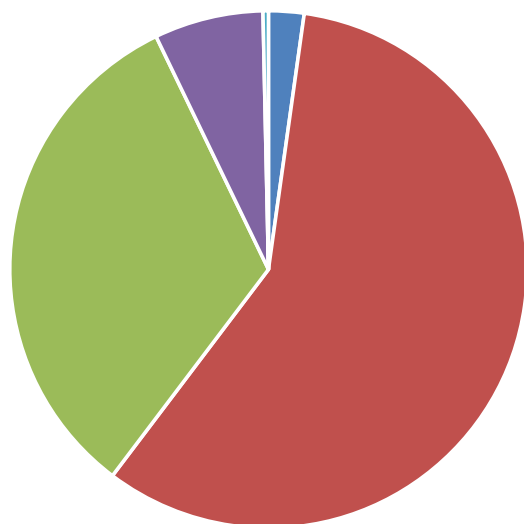
King Mackerel Total Reported Logbook Catch
2015/2016 Season
October - February

0 80 160 320 Miles

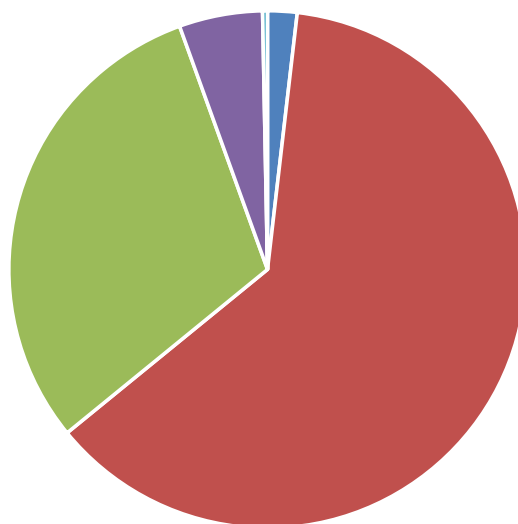


Section 1: Chapters by FMPs

- Fishing Trends
- Vessel Characteristics
 - Average age of commercial king mackerel vessels.
 - 2006: 20 years
 - 2016: 24 years



2006



2016

Commercial King Mackerel
Vessels by Size

Source: SATL Logbook Data

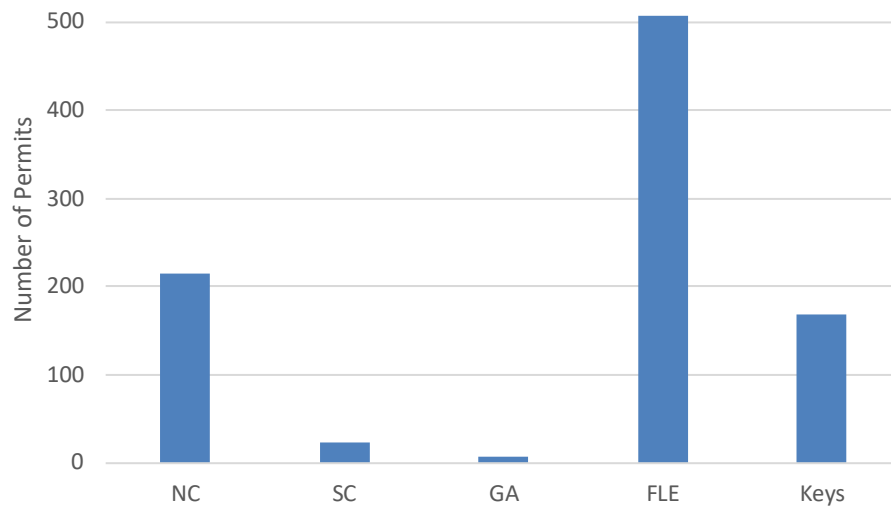
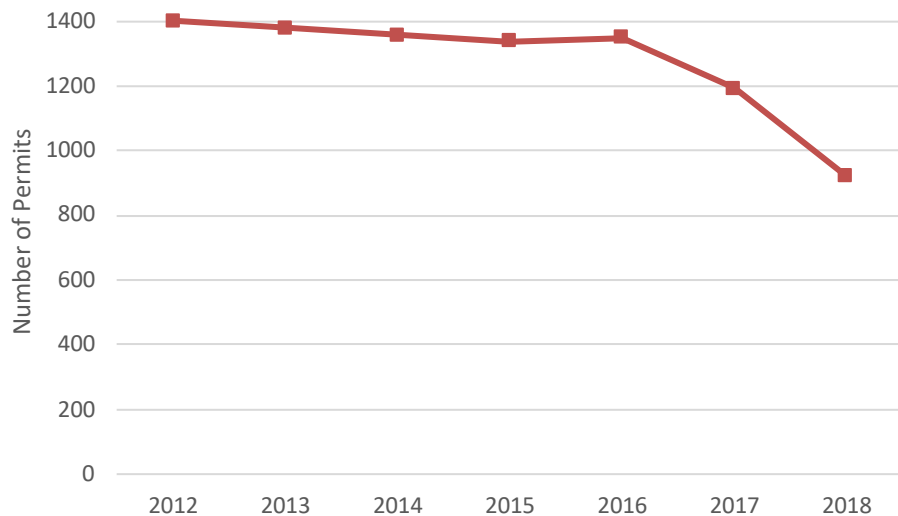
- < 20ft
- 20ft - 29ft
- 30ft - 39ft
- 40ft - 49ft
- >= 50ft



Section 1: Chapters by FMPs

- Fishing Trends

1. SAFMC-related Permits



Limited Access Commercial King Mackerel Permits by year (2012-2018) and by state (2018).

Source: SERO Permits Page



Section 1: Chapters by FMPs

- Imports
 - In 2012, imports of *all* mackerel species (fresh, frozen, salted, smoked) were approximately 44.18 million pounds valued at approximately \$64.97 million (2014 dollars).
 - Domestic production: 138.03 mp (all mackerel) valued at approximately \$37.97 million.

Source: NOAA Foreign Trade Query



Question for Discussion

- The intent of this report is to provide a “snapshot” of SAFMC managed fisheries. What sort of timeframe would be sufficient? Is the most recent 5 years sufficient?
- Which FMPs should take priority?



Section 2: Chapters by Region

* Only for stations in the South Atlantic region.

- Description of Major Fishing Communities
 - As identified in the FMP chapters.
- Fishing Trends
 - Same as FMP chapters, but summarized by state.



Section 2: Chapters by Region

- Infrastructure
 - Mapping of dealer locations vs. homeport locations.
 - Fishery Performance Reports – qualitative discussion of fishability.
 - Other?



Section 2: Chapters by Region

- **Safety at Sea**
 - **Investigation data:** Casualty summary information for USCG investigations involving commercial fishing vessel casualties, personnel injuries or pollution.
 - **Events data :** identifies a series of events making up the casualty of commercial fishing vessels.
 - **PCAS data:** personnel casualty and injuries data on commercial fishing vessel and drive trips.
 - **Pollution:** spill data records for commercial fishing vessels.

Source: Coast Guard Analytics CGBI cubes system



Questions for Discussion

- Is there other readily available (i.e. no primary research required) data sources that could be used to show the distribution of fishing infrastructure?
- Is there other readily available information not included in the outline that could help better describe the social and economic characteristics of SAFMC managed fisheries?
- Are there another analyses that could provide insight into the social and economic characteristics of SAFMC managed fisheries?

