

# Southeast Reef Fish Survey

## 2021 Sampling Activities and Relative Abundance

Marcel Reichert, Walter Buble, Dawn Glasgow, Tracey Smart (SCDNR)

Christina Schobernd, Nate Bacheler, Todd Kellison, Adam Pollack (SEFSC)

April 2022 SSC Meeting

# Southeast Reef Fish Survey (SERFS)

Current Funding & Sampling:

MARMAP + SEAMAP-SA + SEFIS

Historical Funding & Sampling:

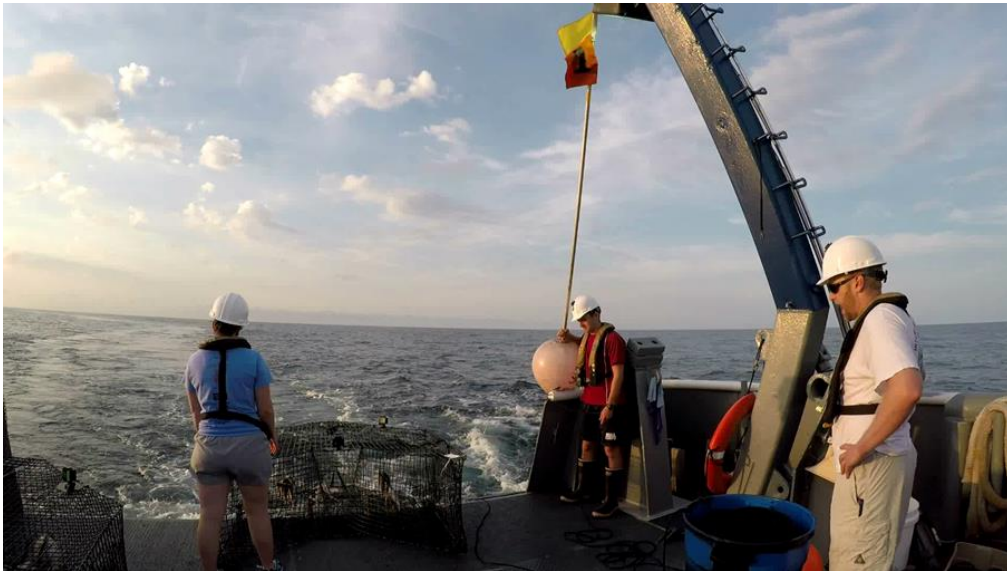
MARMAP

Marine Resources Monitoring, Assessment & Prediction Program (SCDNR)  
Southeast Area Monitoring & Assessment Program - South Atlantic (SCDNR)  
Southeast Fishery-Independent Survey (SEFIS)



# Chevron Video Trap Sampling

- Target low to medium relief, live-bottom habitats
- Depths ~15-110 m
- Trap used consistently and standardized since 1990
- Baited with menhaden, soak time  $\approx$ 90 minutes
- Since 2011: all traps have 2 video cameras



# Chevron Video Trap Universe

- $\approx$  4,300 trap sampling stations (NC– FL)
- $\approx$  2,500 randomly selected
- Sampling mid-April – mid-October

## Sample and data processing & analyses

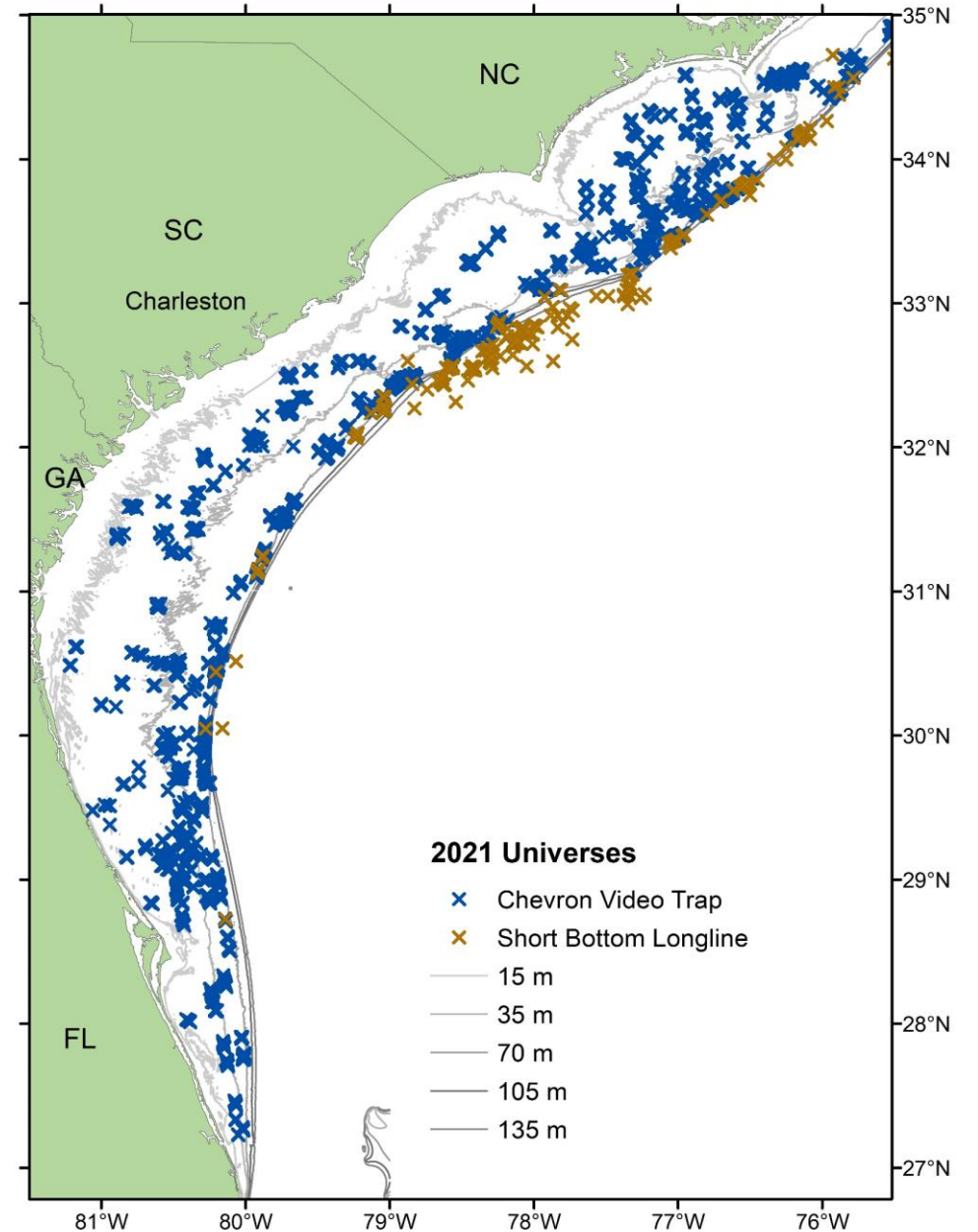
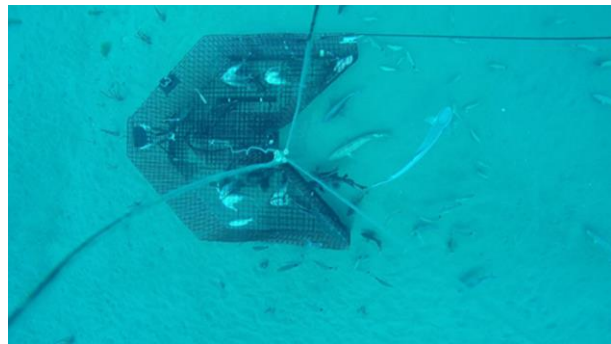
MARMAP/SEAMAP-SA (SCDNR):

- Trap and longline indices
- Life history

SEFIS (SEFSC)

- Video indices

One combined database (SEAMAP.ORG)



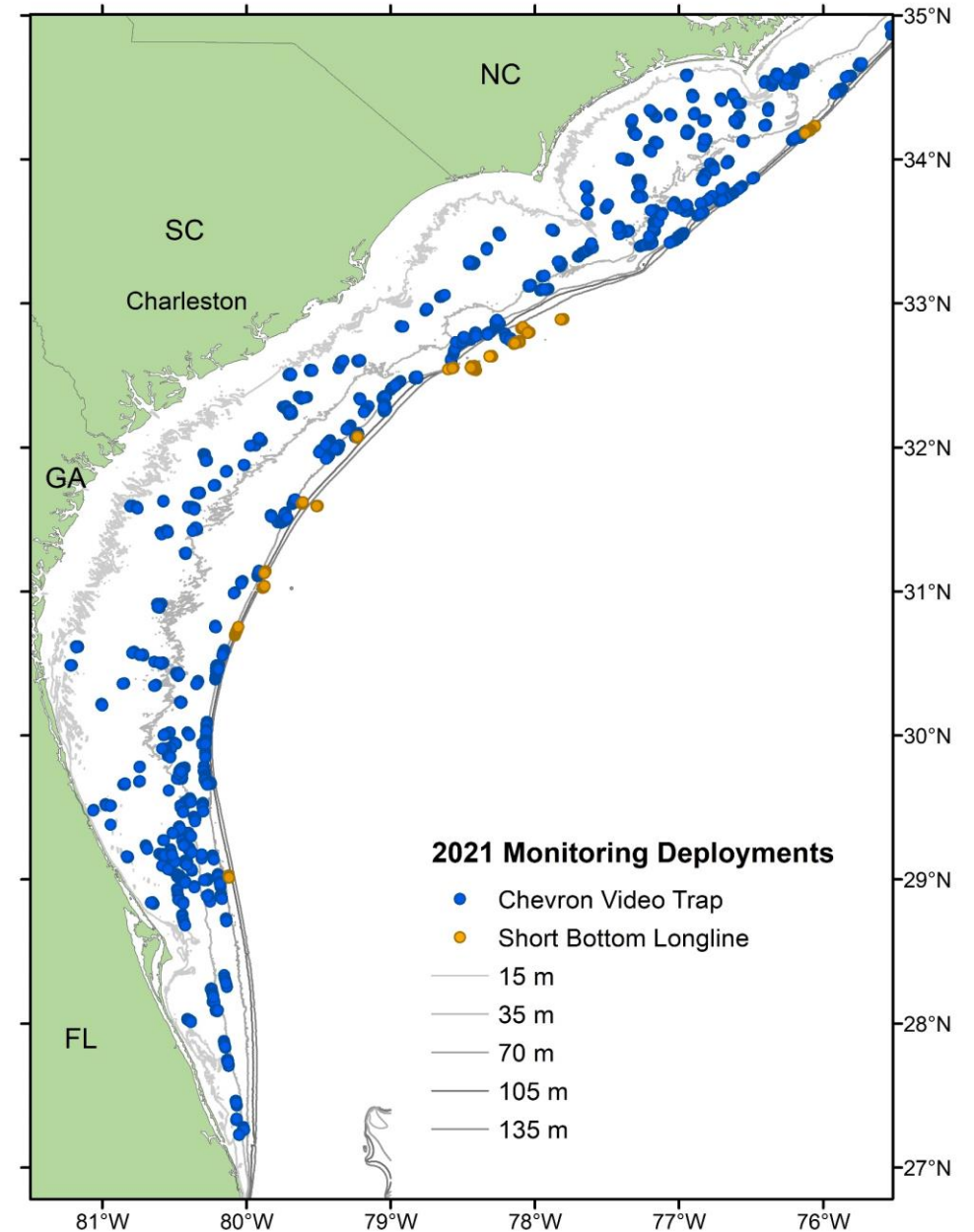
# 2021

No sampling in 2020 (COVID-19)

Full cruise schedule, but

- Reduced scientific crew
- Optimized # traps deployed
- Reduced life history sampling focus on otolith sampling (age)

- **118.5** days at sea
- **2,755** gear deployments
  - 2,025** Chevron Video Traps
  - 144** Short Bottom Longlines (MARFIN)
  - 351** CTD deployments
- **39,210** fish (**86** species) collected
- **6,018** fish (**33** species) processed for life history (age, repro., DNA)



# Most Encountered Species 2021

Common Name (2019 CHV Rank)	Chevron	Short BLL	Total
1. Tomtate (1)	22,698		22,698
2. Vermilion Snapper (3)	3,584	1	3,585
3. Black Sea Bass (2)	3,583		3,583
4. Red Snapper (6)	1,969	9	1,978
5. Scup/Longspine Porgy (4)	1,834		1,834
6. White Grunt (5)	914		916
7. Gray Triggerfish (8)	890		890
8. Red Porgy (7)	852	10	862
9. Sand Perch (9)	566		566
10. Spottail Pinfish (10)	489		489
11. Bank Sea Bass (11)	430		430
12. Knobbed Porgy (12)	151		151
13. Snowy Grouper*	12	107	119
16. Silk Snapper*	68	5	73
19. Scamp*	23	16	39
22. Gag (20)	26	2	28

Increase  
Decrease

\*Mostly due to increased SBLL efforts

# Overview of Relative Abundance

- No sampling in 2020
- No update for longline indices (analyses ongoing)
- Chevron index (**1990-2021**) - Video index (**2011-2019**)
- Standardized using Zero-Inflated Negative Binomial model (ZINB)  
Most appropriate method, reduces uncertainty

## Traps:

- Number of fish
- Trap soak time

## Videos:

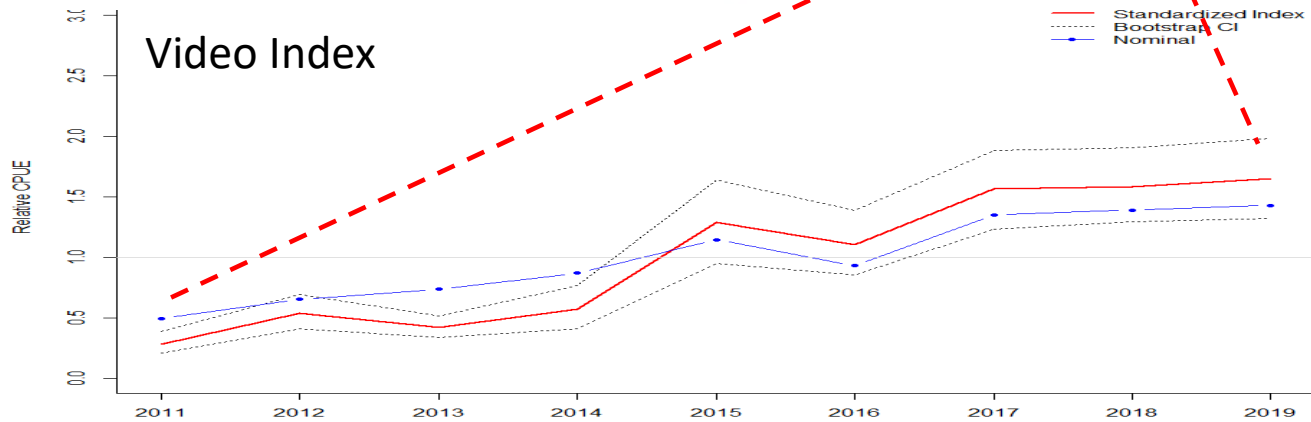
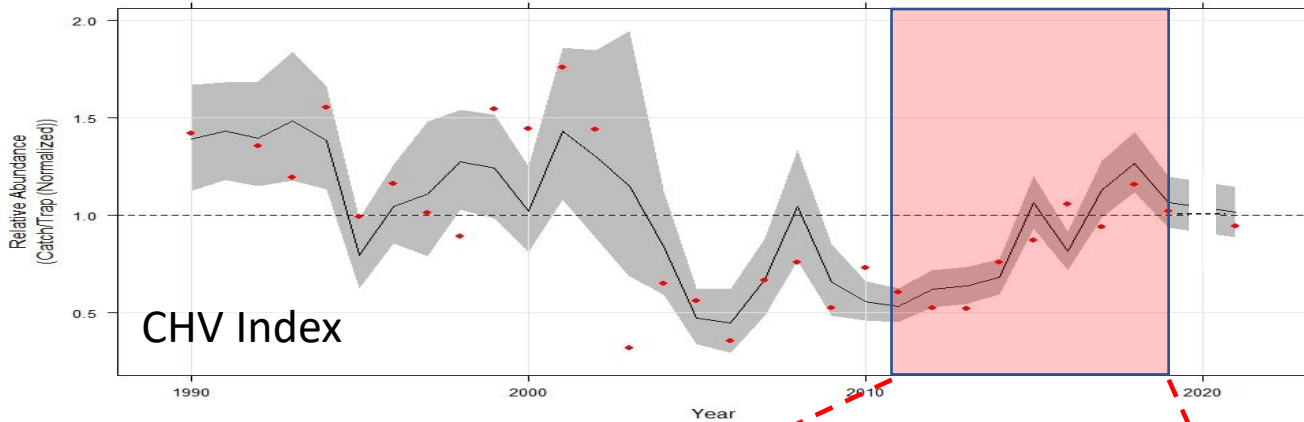
- MeanCount method
- 10 min after trap lands on bottom
- One snapshot every 30 s for 20 min



# Indices- Example

Normalized to long-term average (dashed or solid line at 1)

e.g. 2 = twice long-term average, and 0.5 = half long-term average

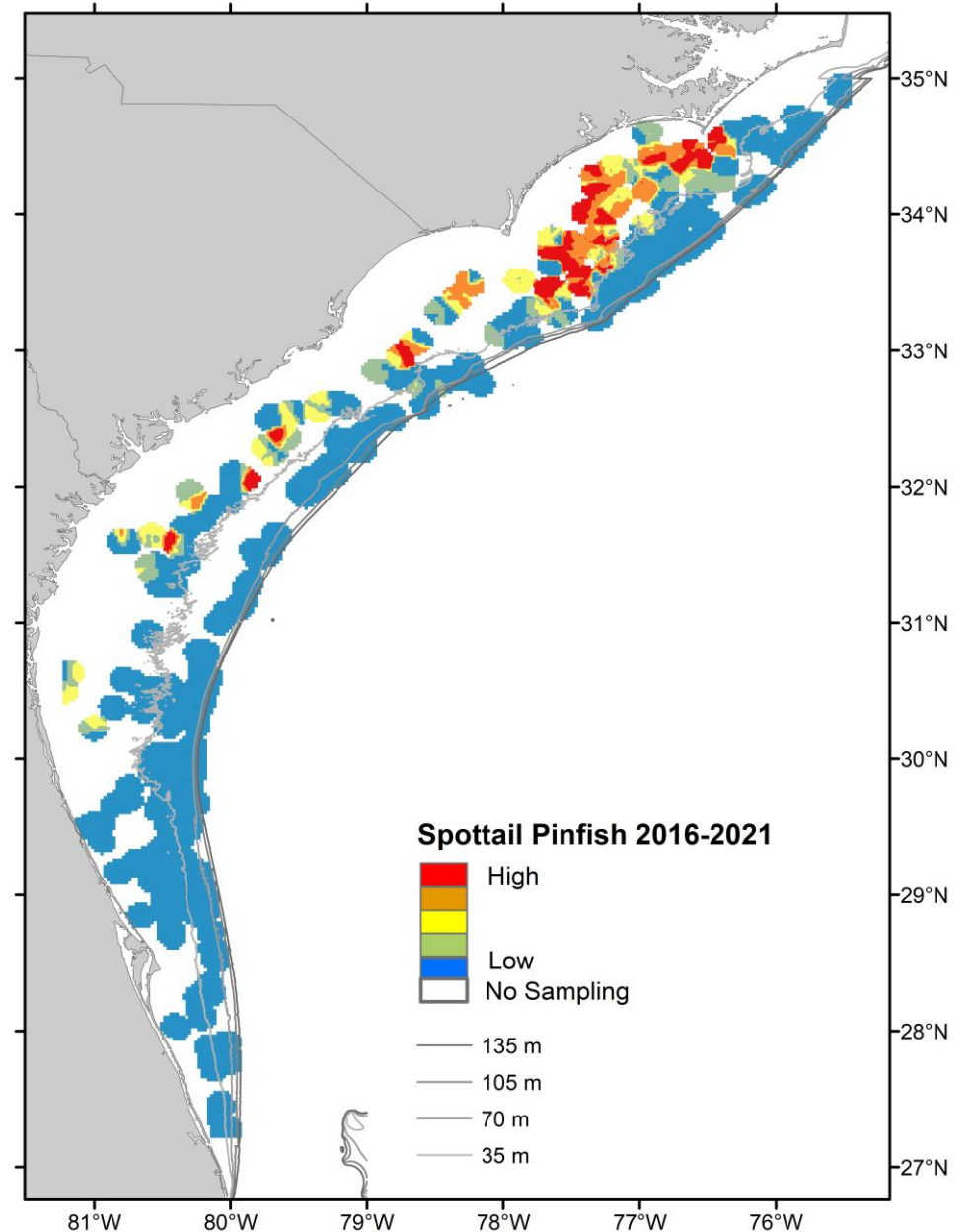


Gear	ZINB Index	95% C.I.	Nominal Values
CHV	Black Line	Gray Shading	Red Dots
Video	Red Line	Dotted Lines...	Blue Dots & Line

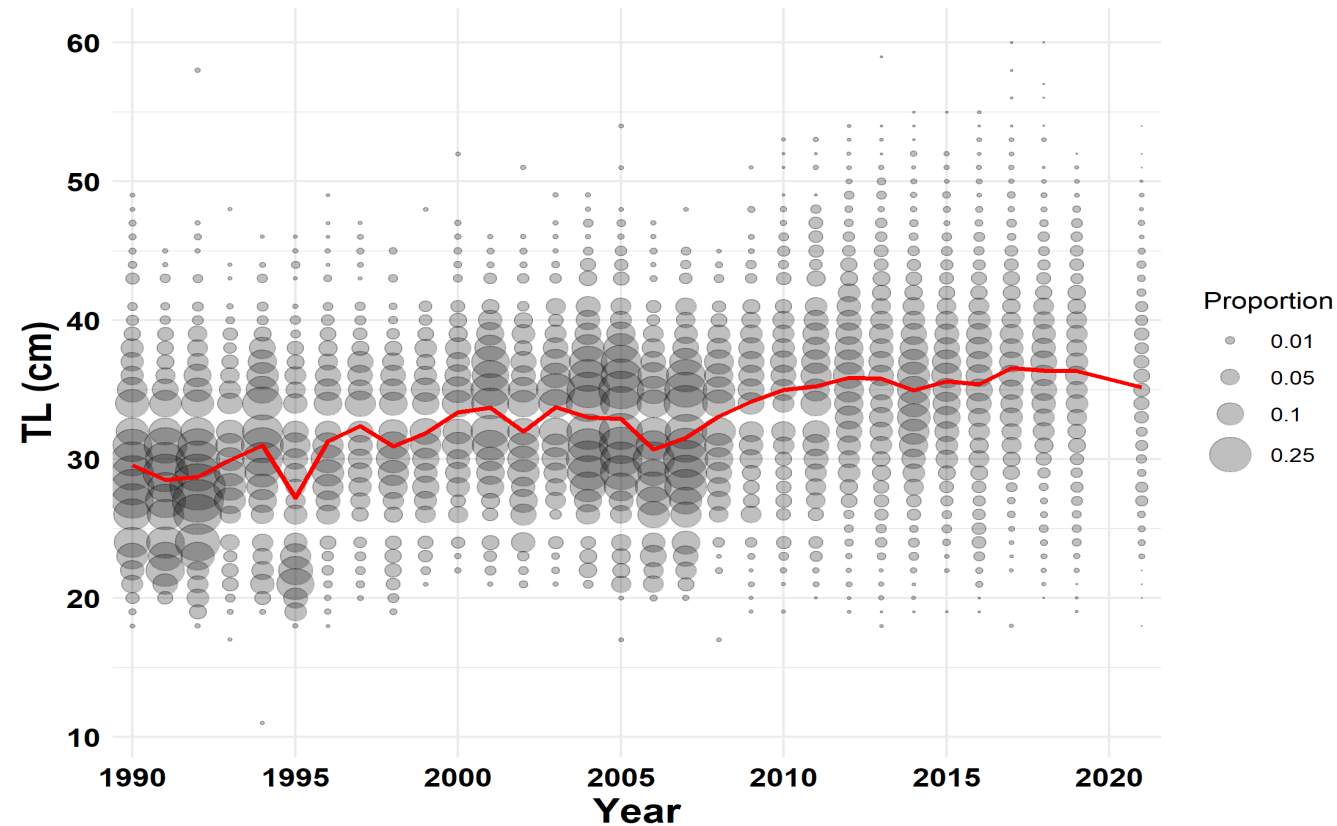


# Maps- Example

- Nominal CHV abundance in quartiles
  - # fish / trap hour
- 2016-2019 & 2021
- Cooler colors => lower nominal abundance
- Warmer colors => higher nominal abundance
- White => no sampling



# Length Compositions- Example



- Chevron Trap Only
- Maximum (Pinched) Total Length (cm)
- 1-cm Length Bins
- Bubble size = # fish in length bin / total fish measured in a year
- **Red Line** = Average TL
- "Missing" length bins in some graphs are effect of converting between FL & TL and rounding to cm

# Relative Abundance Overview

## Caveats



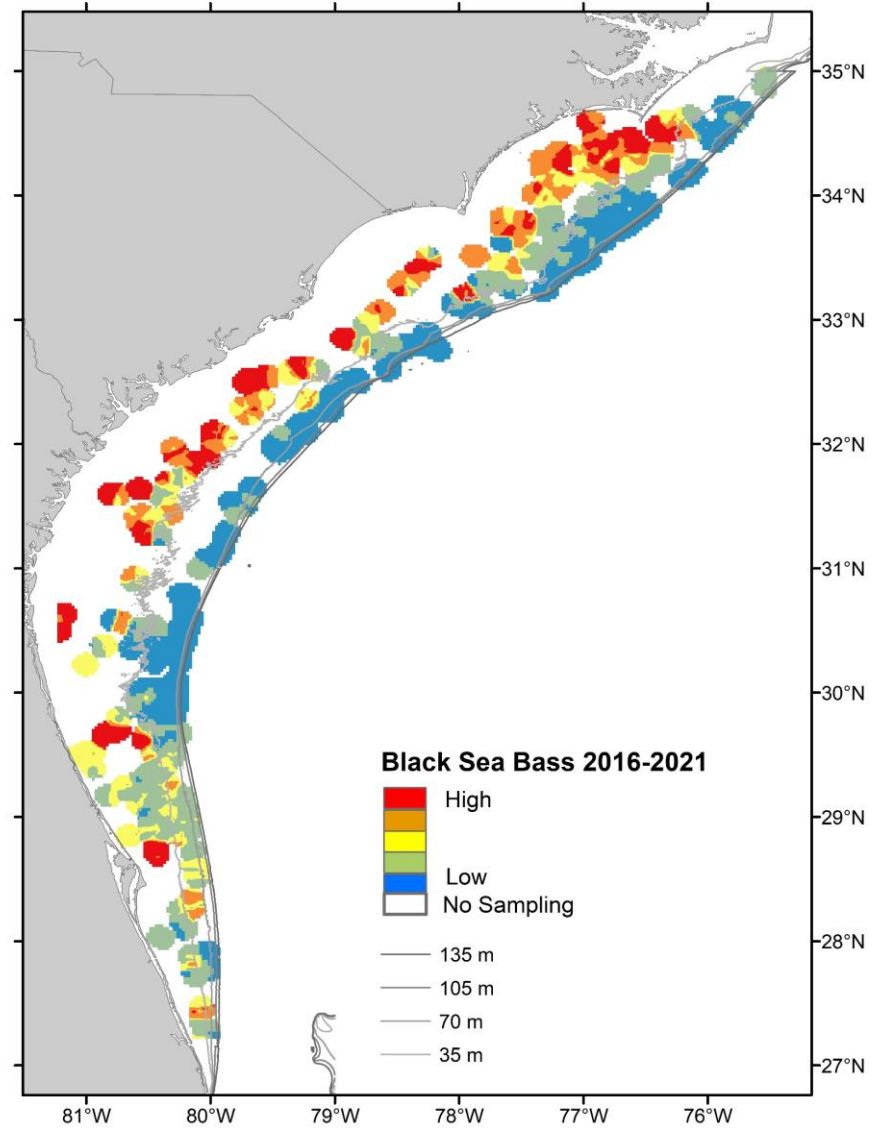
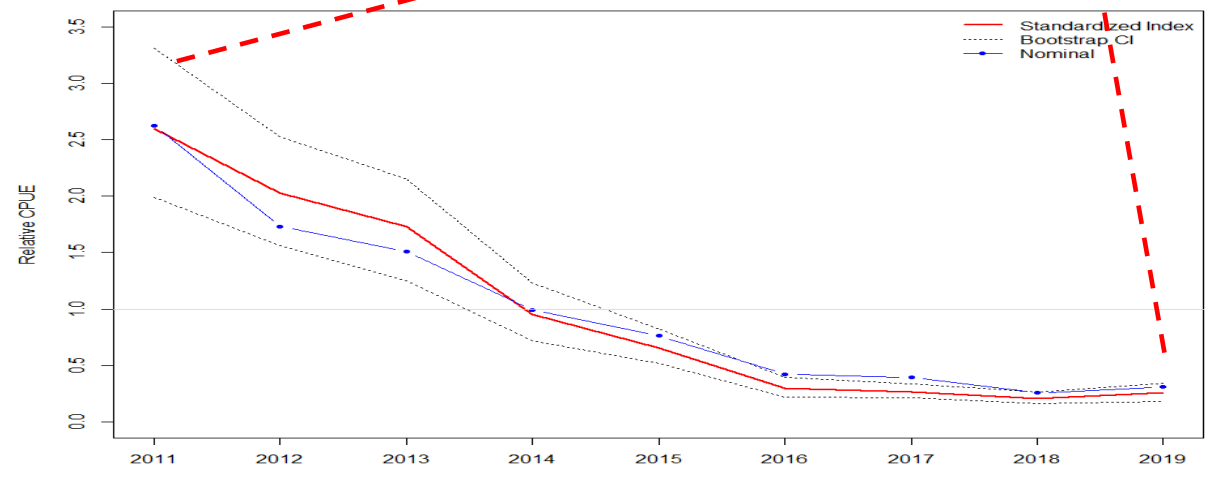
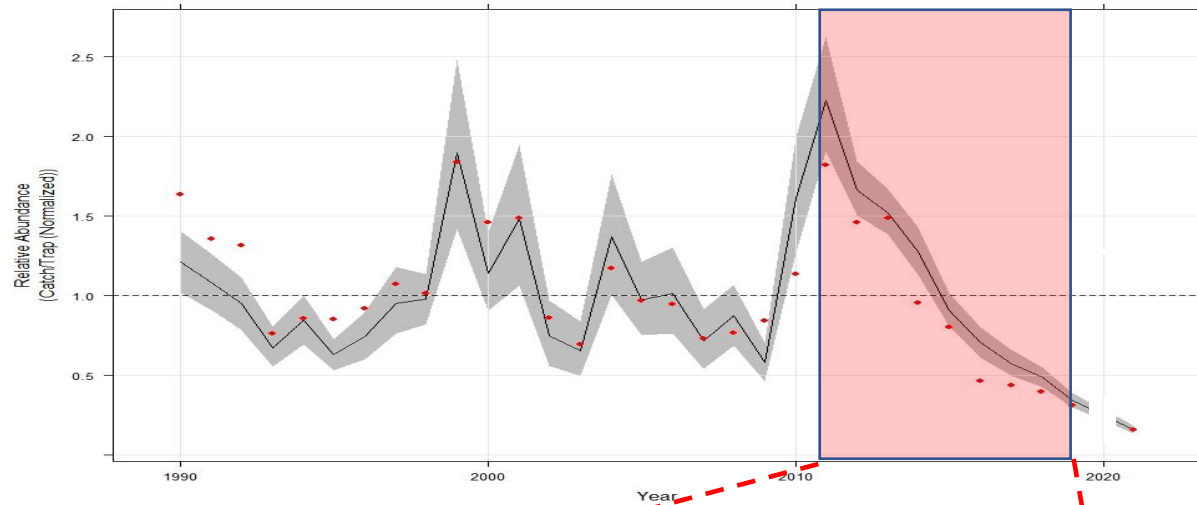
- Not an update of stock status
- Trap: Constraints, stratification, units, and models may be different from those used in (SEDAR) stock assessments
- Video: Index for species that have been assessed through SEDAR, with video index model used in the assessment
- Not all species have been assessed or updated (SEDAR) and not all updated trends and analyses have been discussed in assessment framework

# Fishery-Independent Abundance Trends 2021

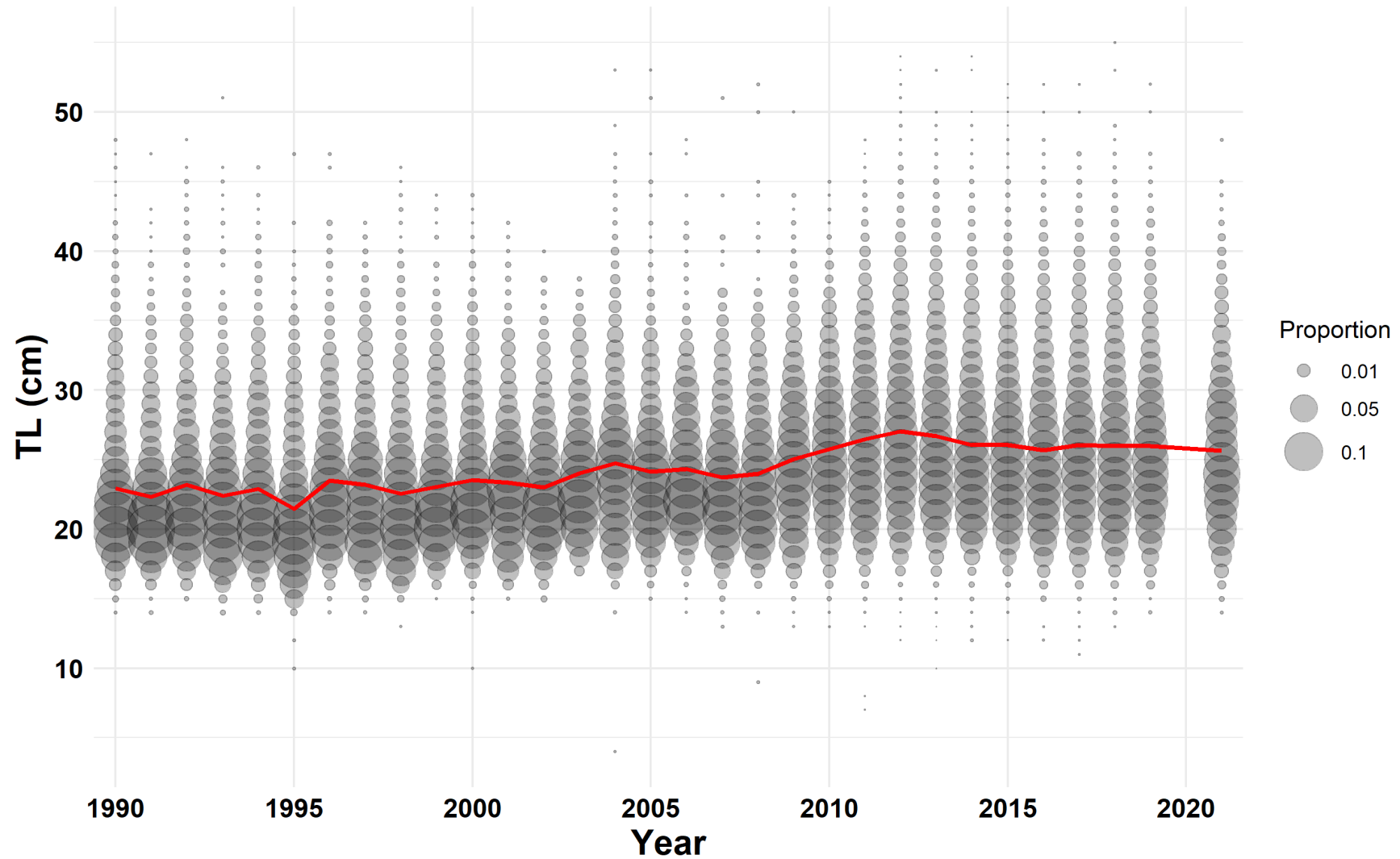
Species	CHV	Video
Black Sea Bass	X	X
Gag Grouper	X	X
Red Grouper	X	X
Scamp (& Yellowmouth)	X	X
Red Snapper	X	X
Vermilion Snapper	X	X
Red Porgy	X	X
Gray Triggerfish	X	
White Grunt	X	
Tomtate	X	



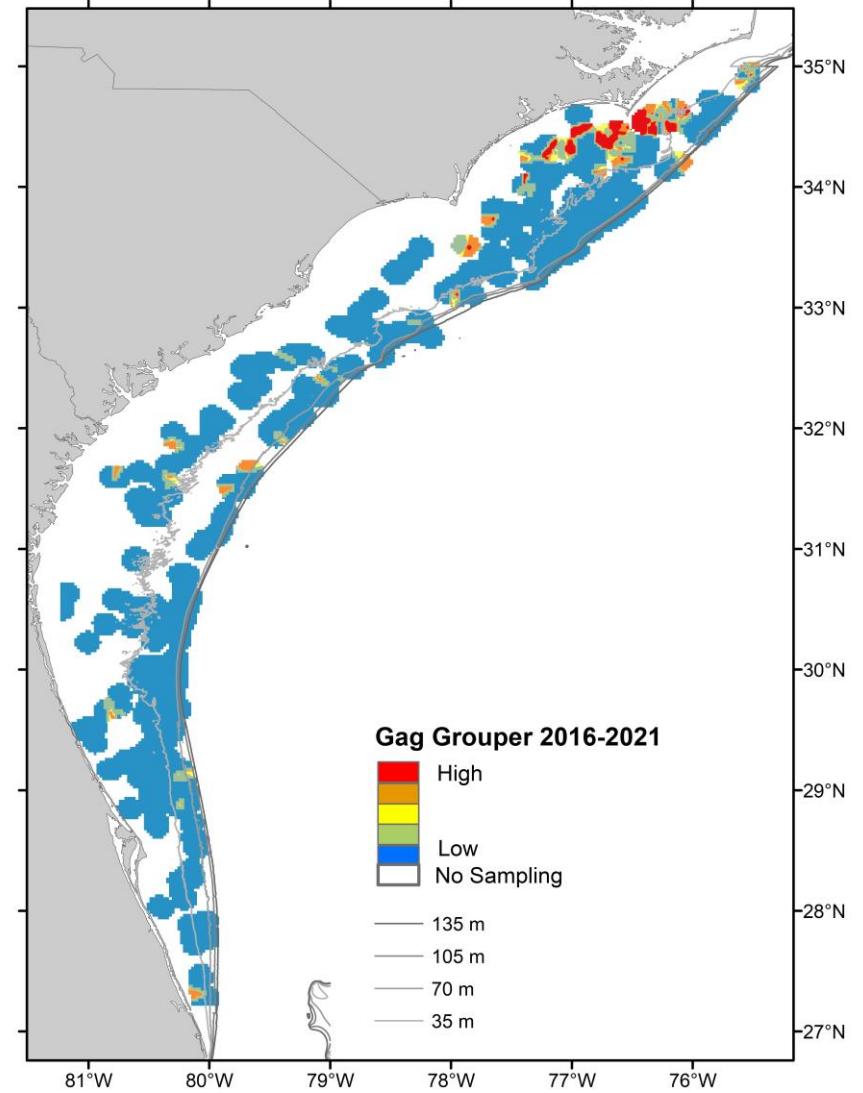
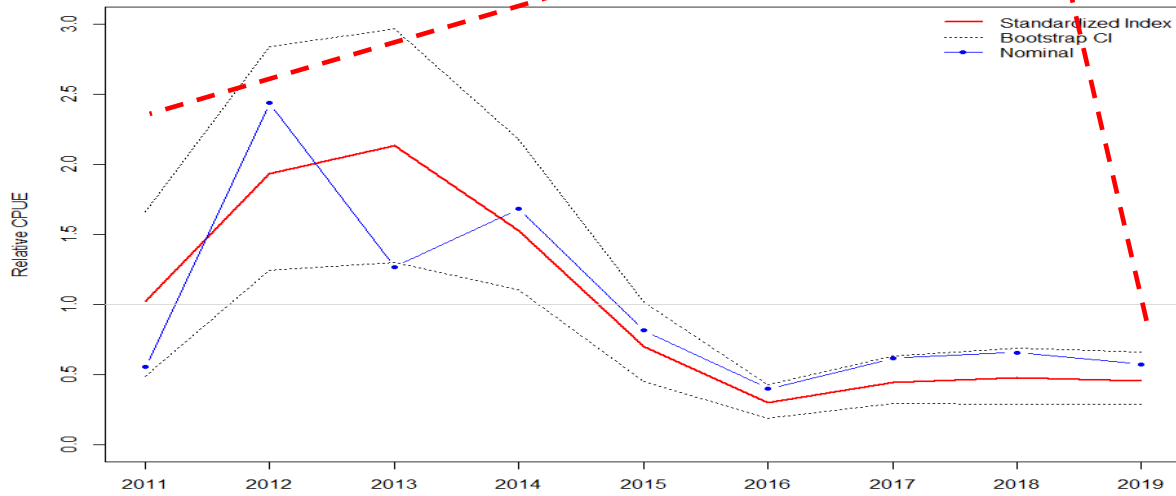
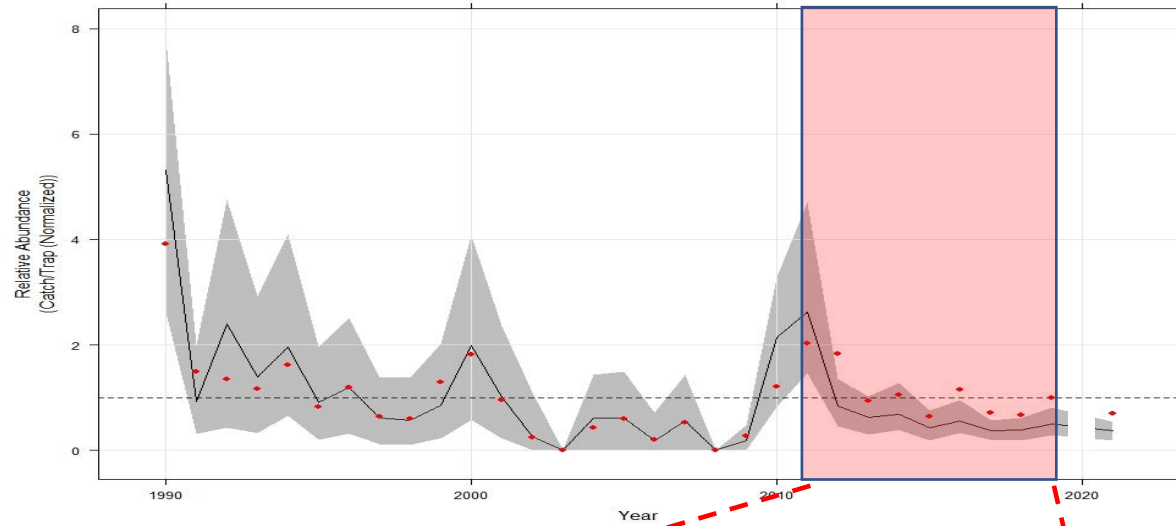
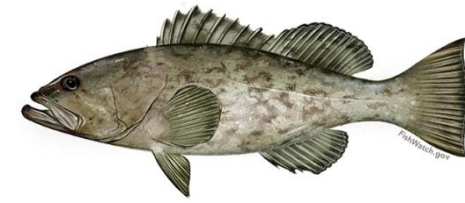
# Black Sea Bass



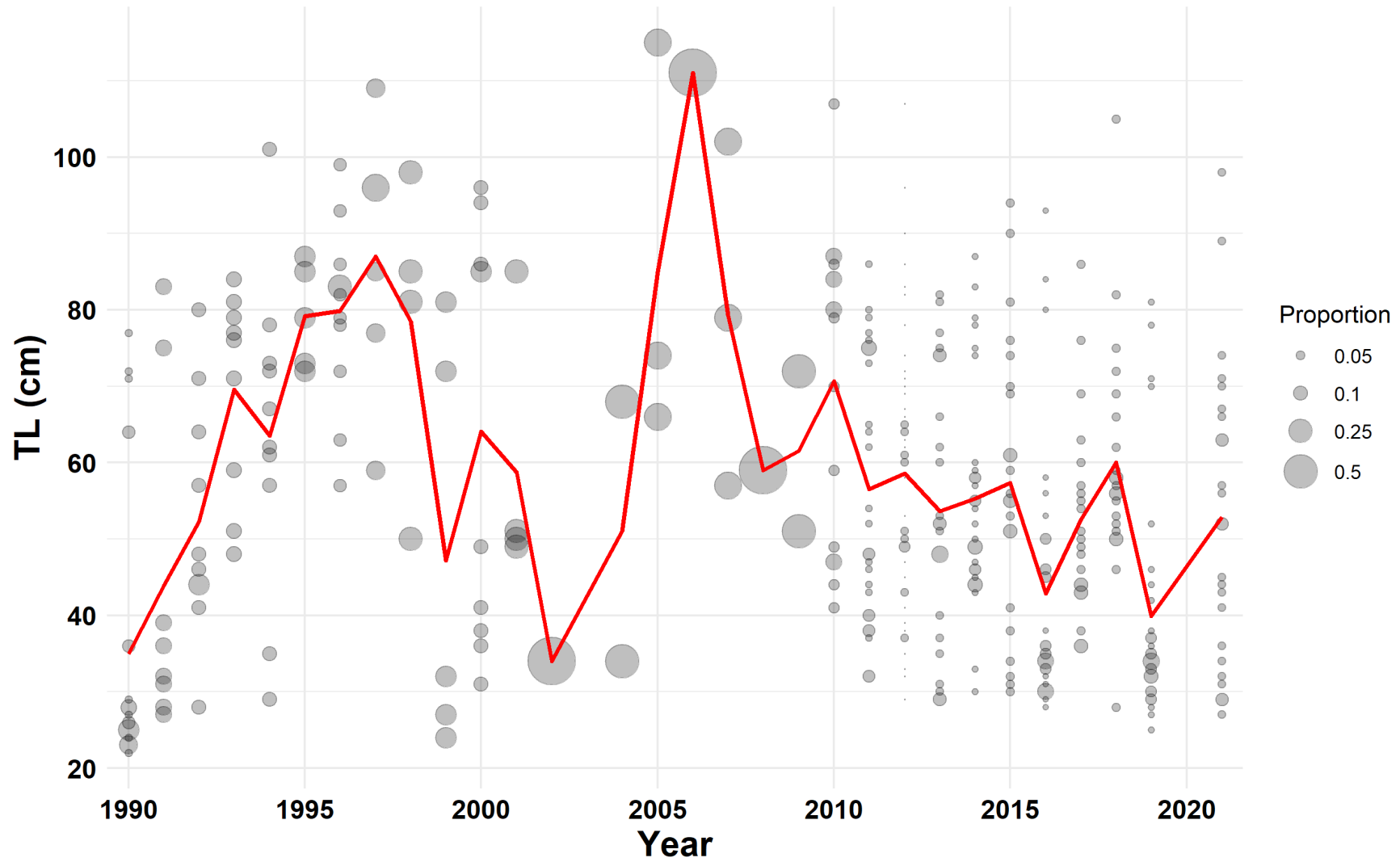
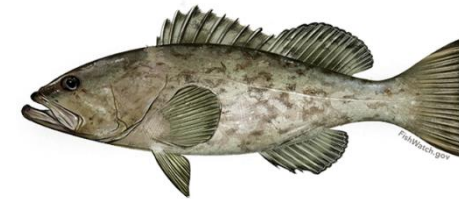
# Black Sea Bass



# Gag

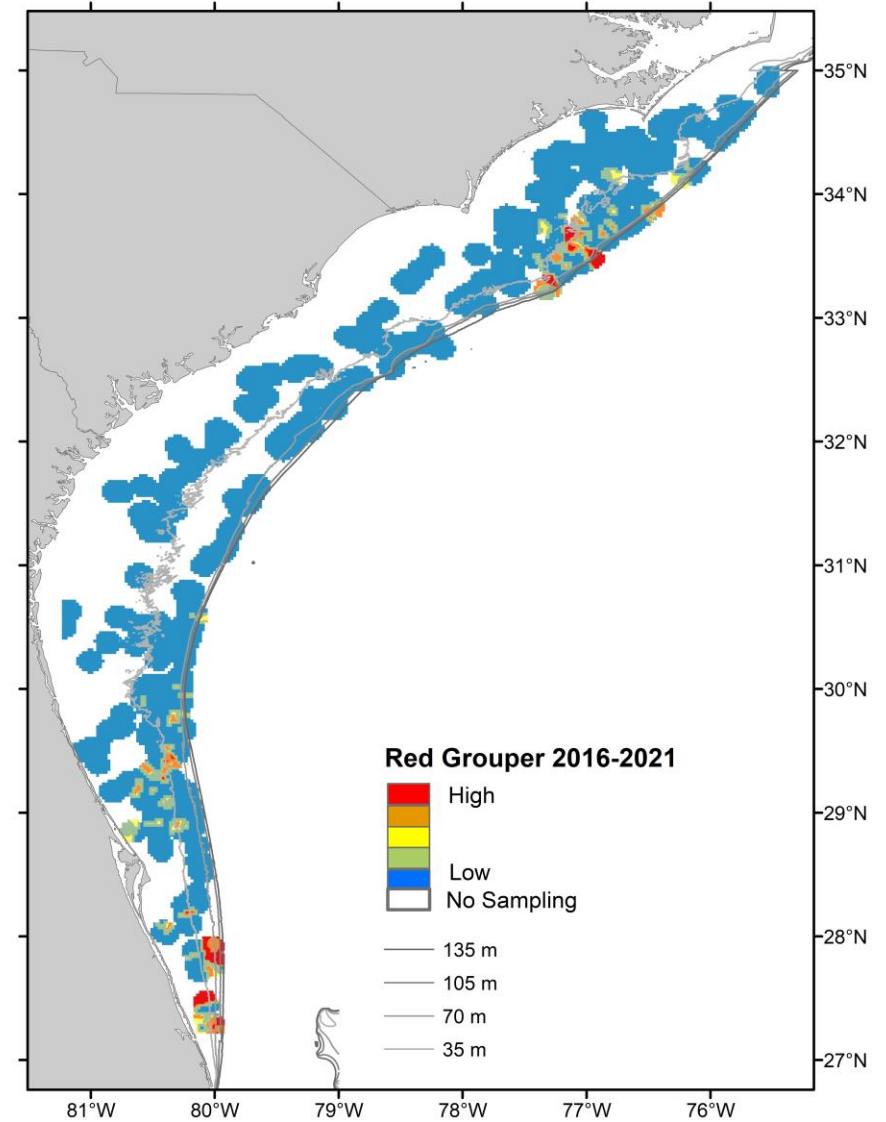
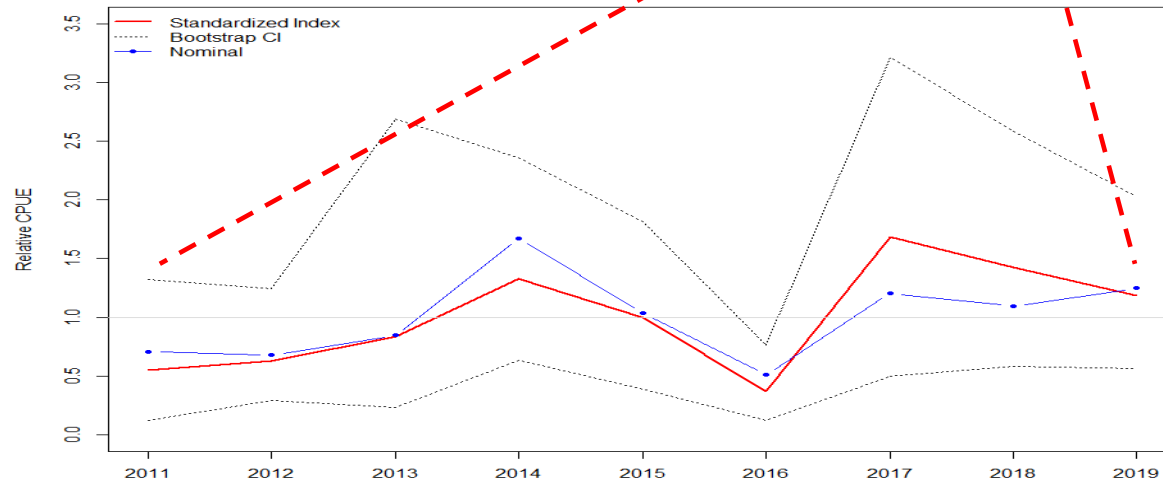
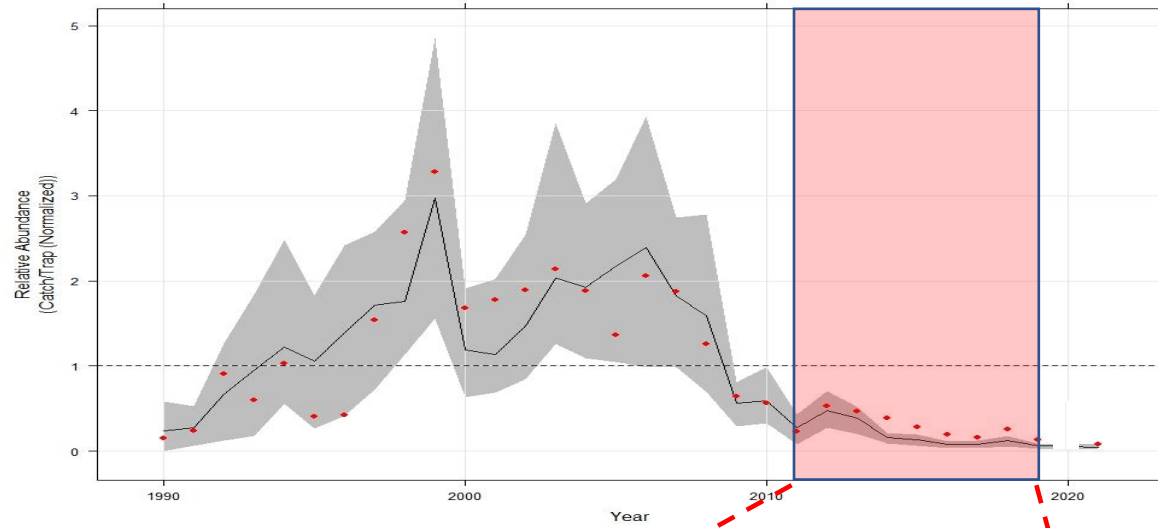
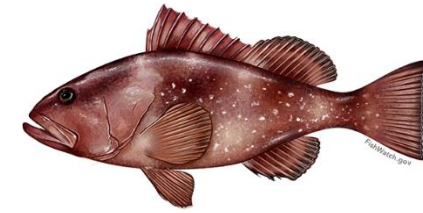


# Gag

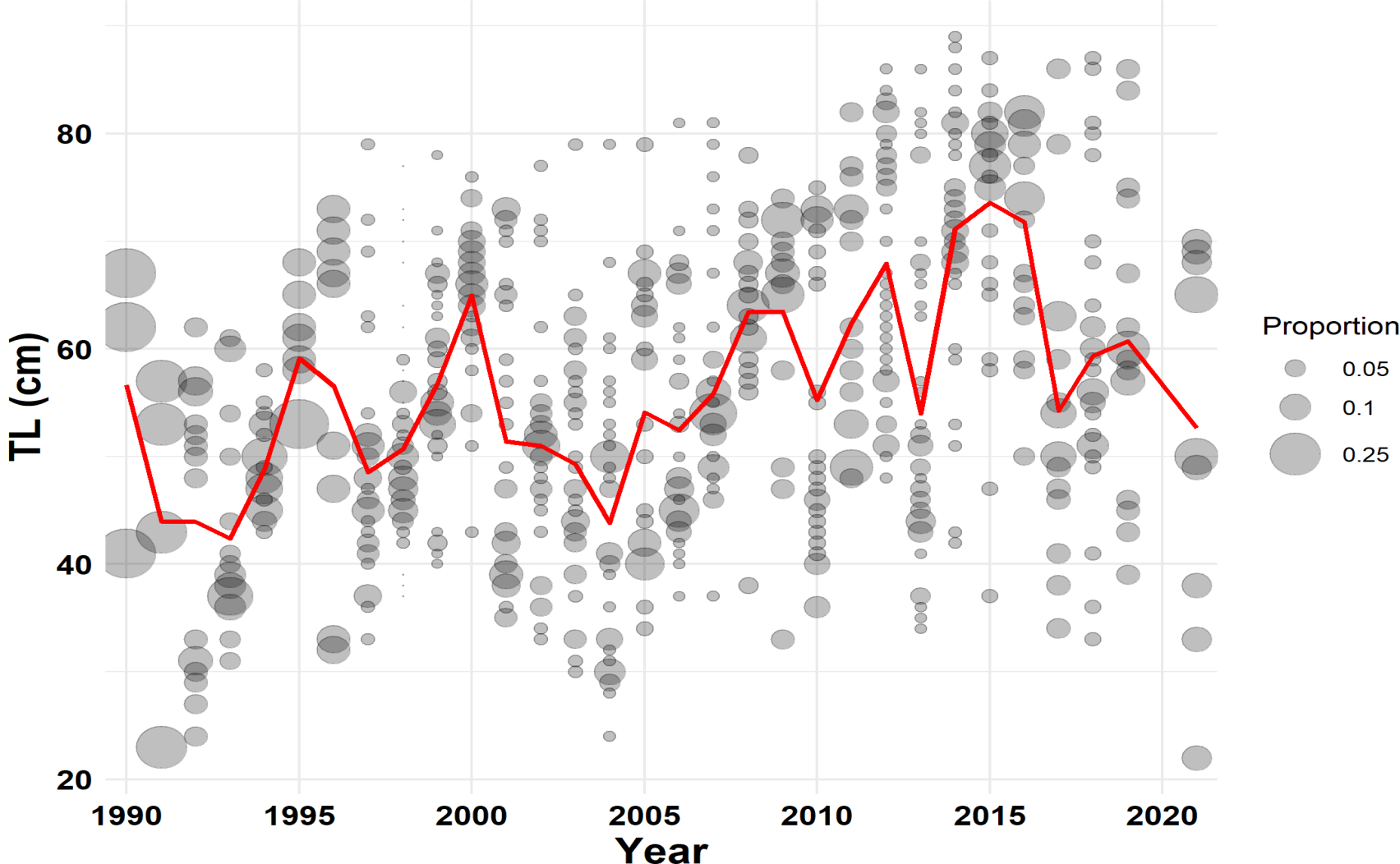
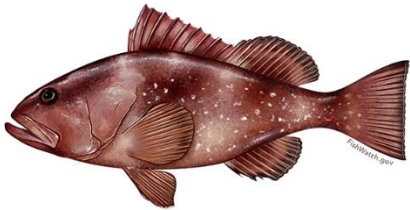




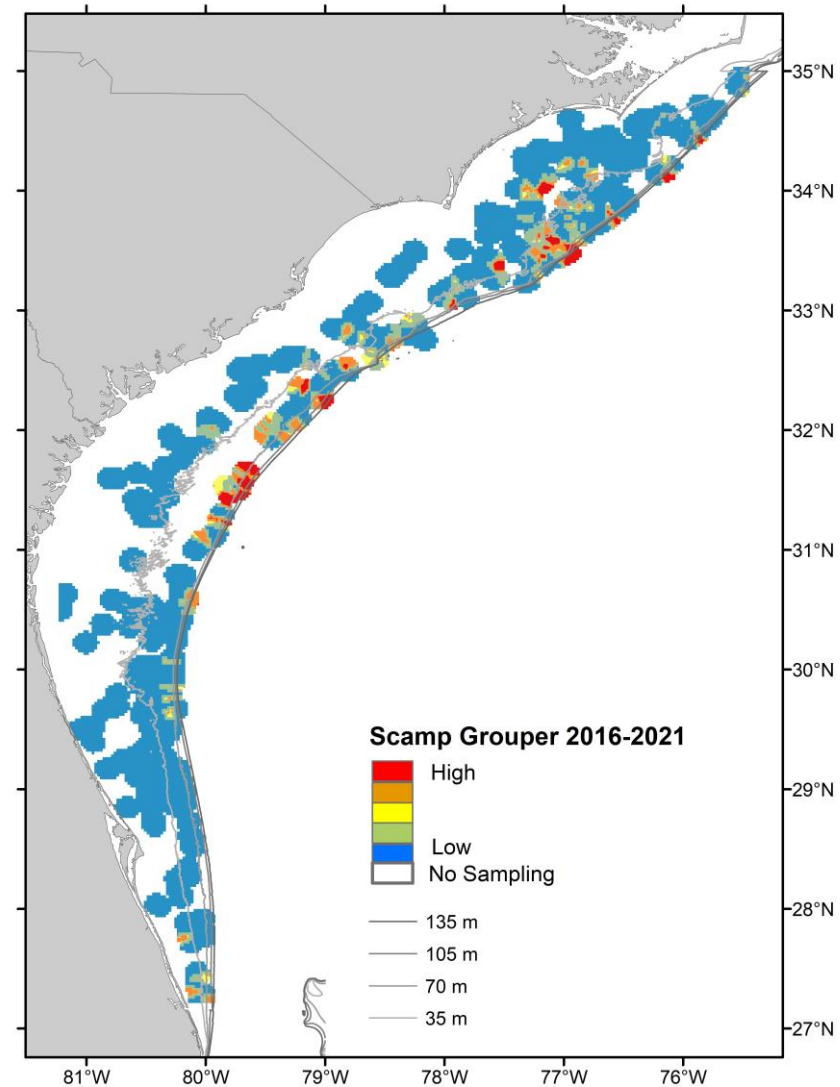
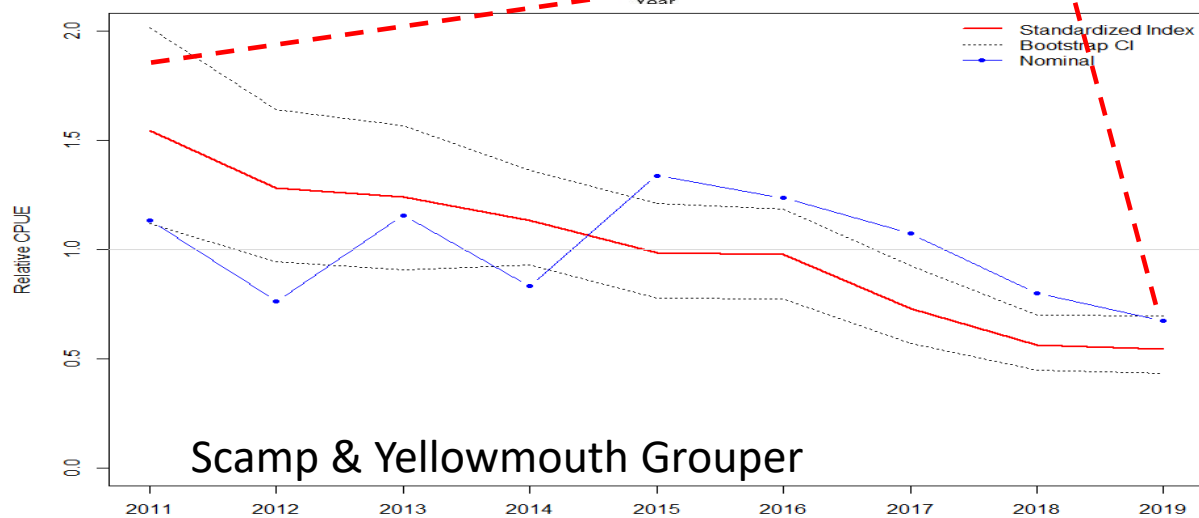
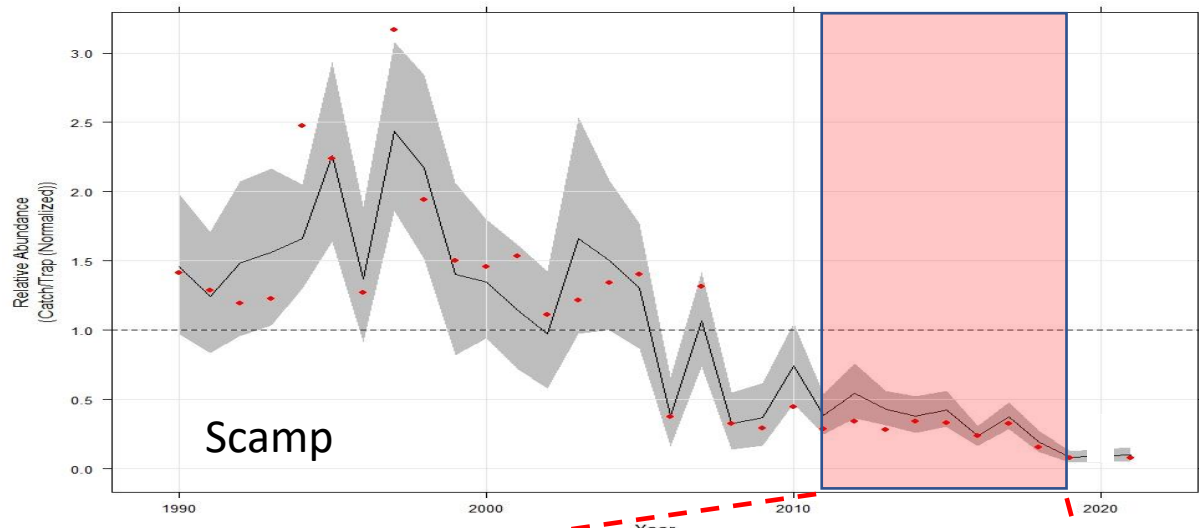
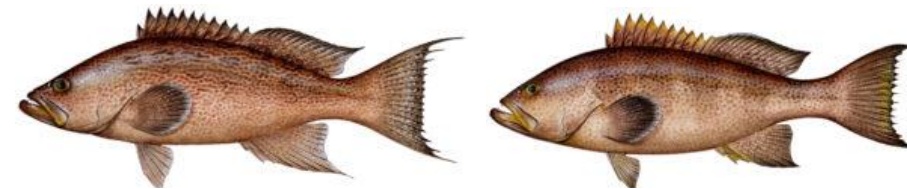
# Red Grouper



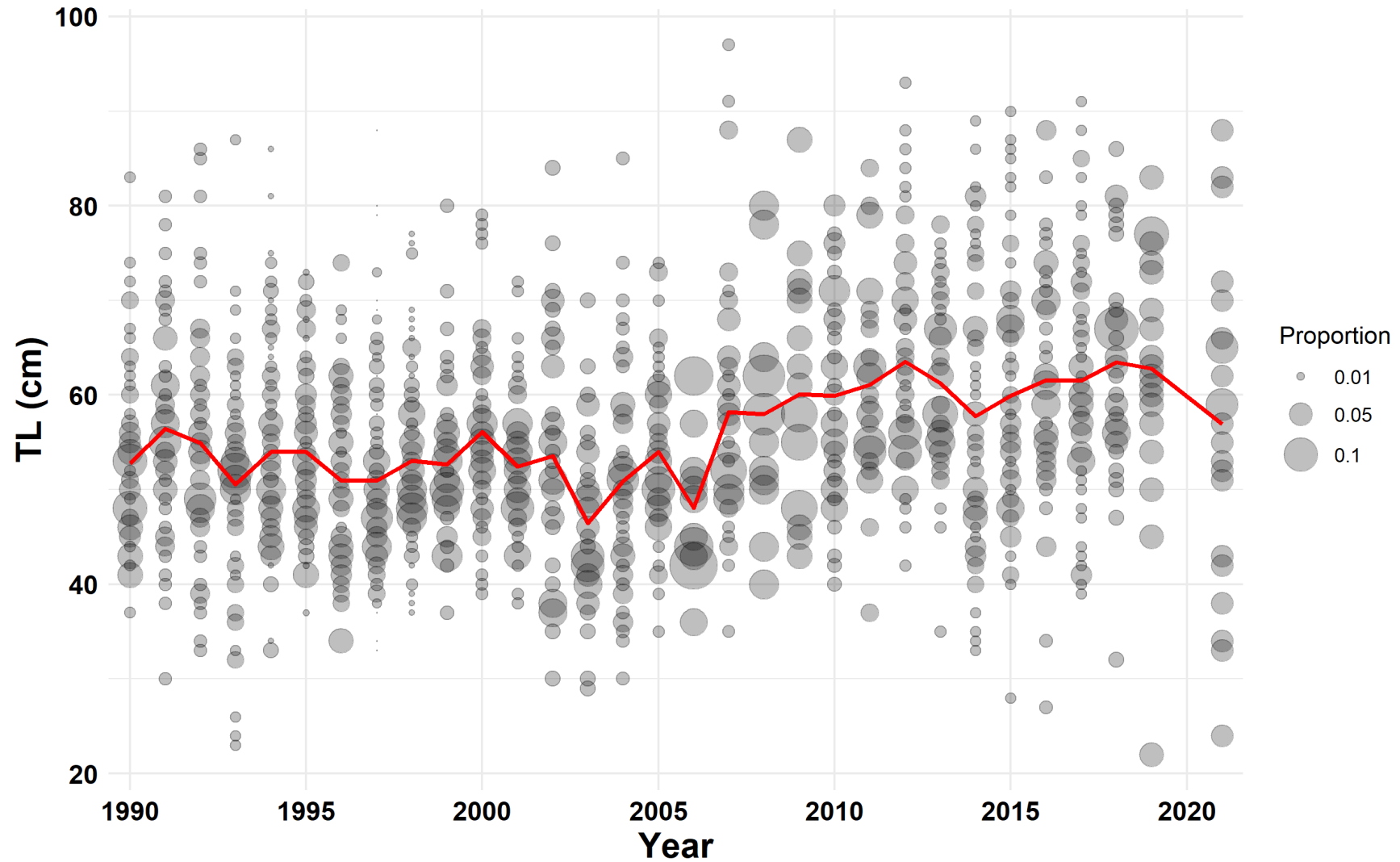
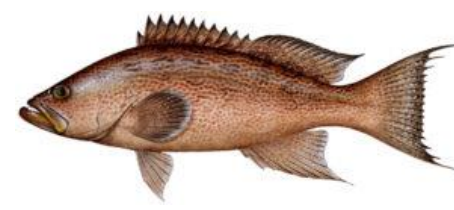
# Red Grouper



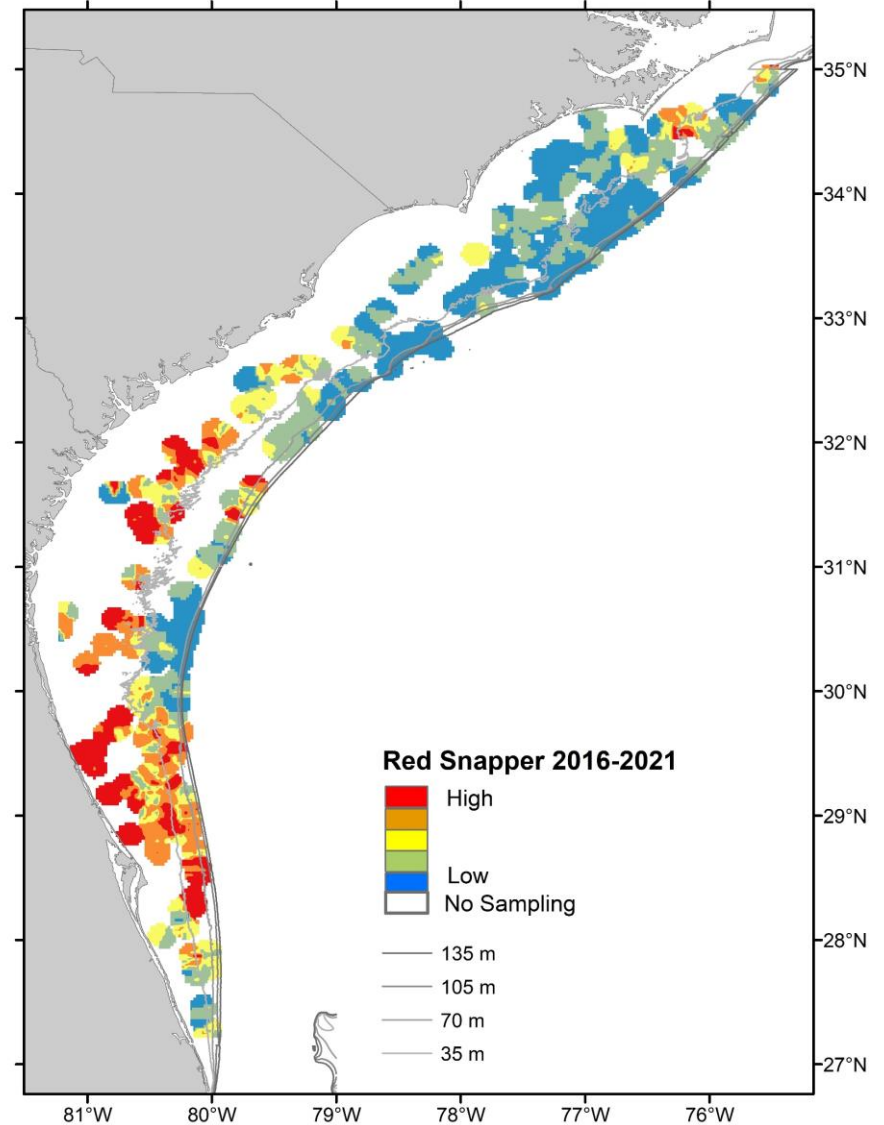
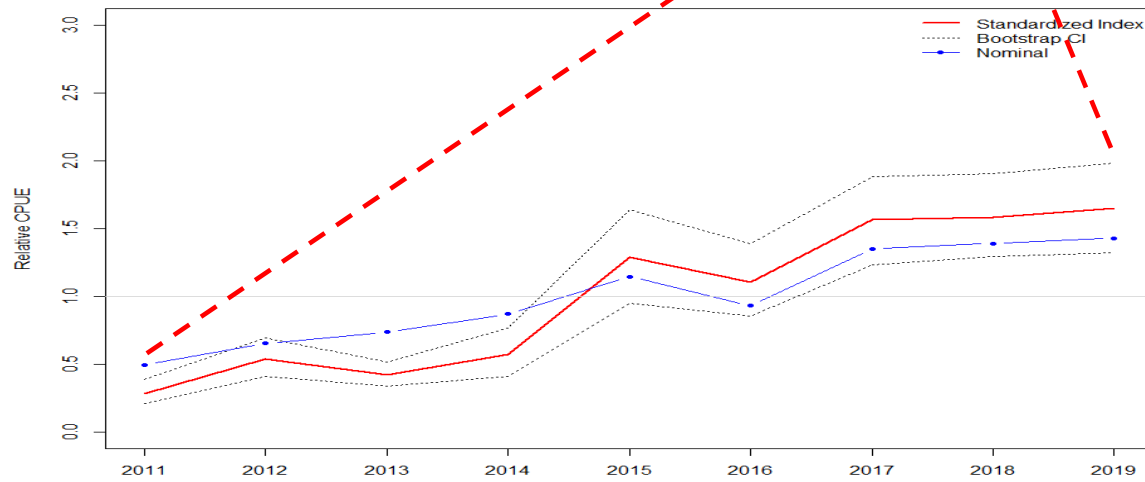
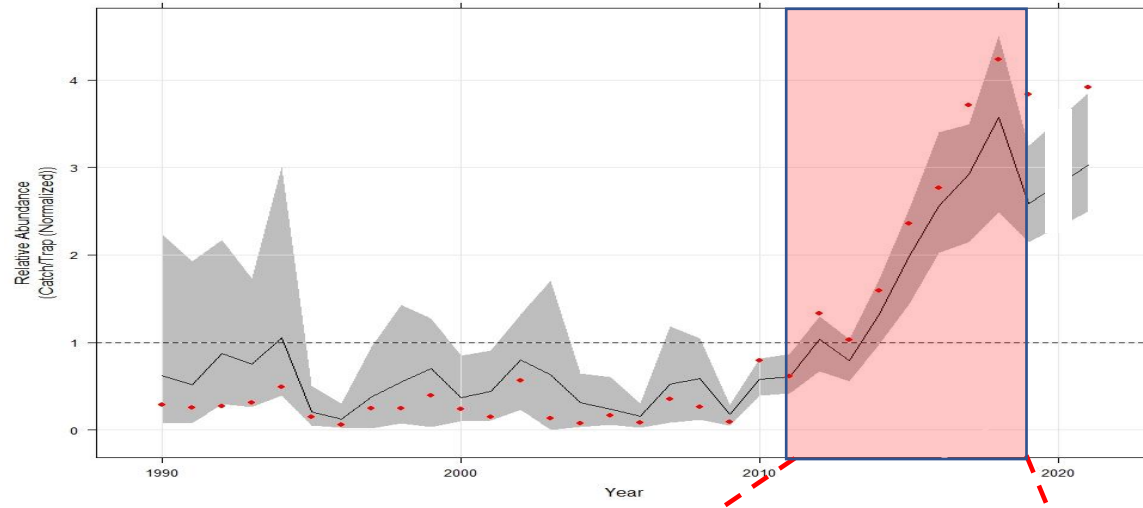
# Scamp & Yellowmouth



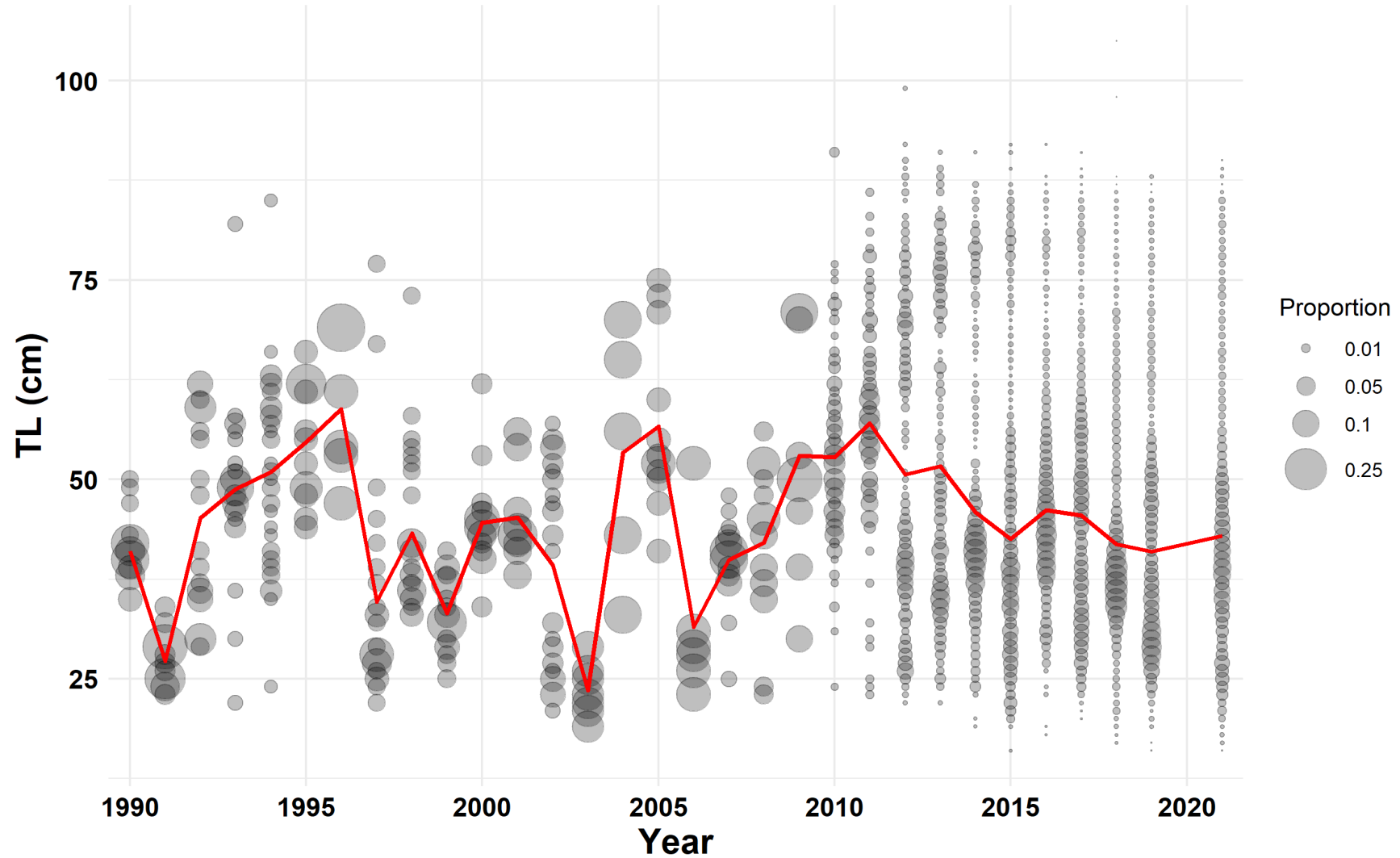
# Scamp



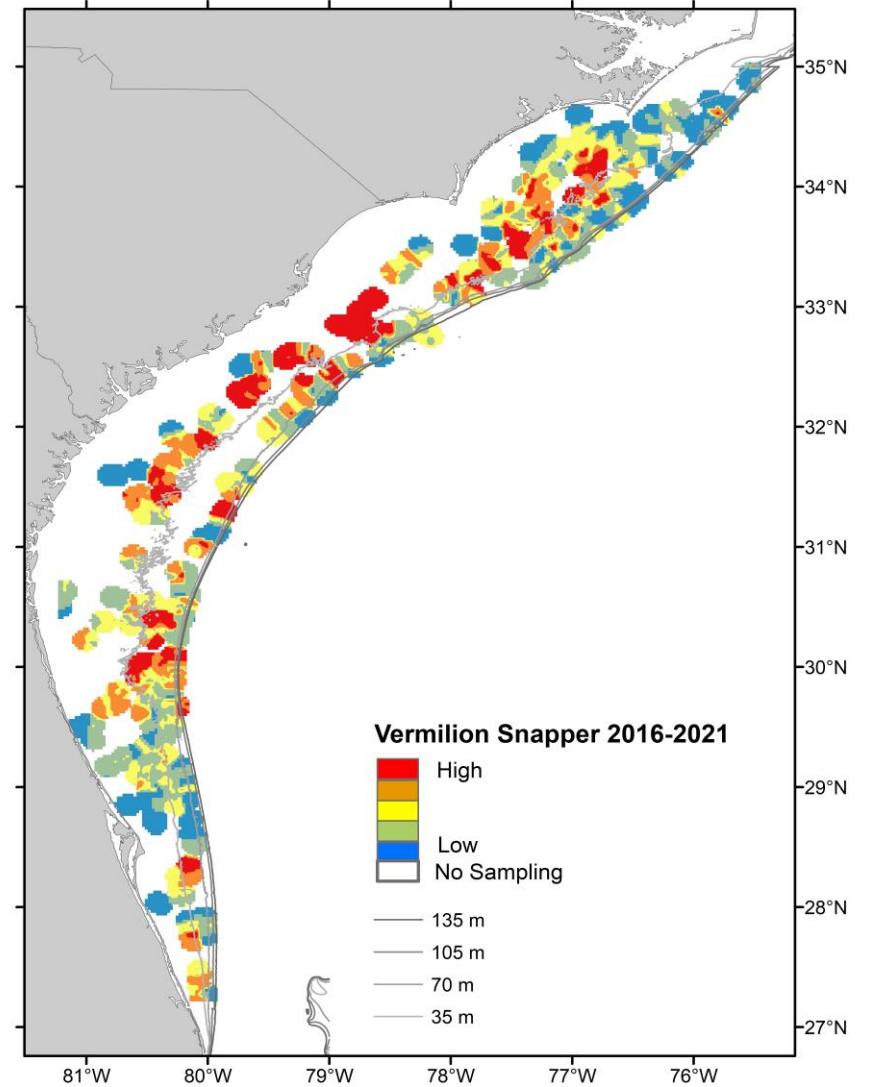
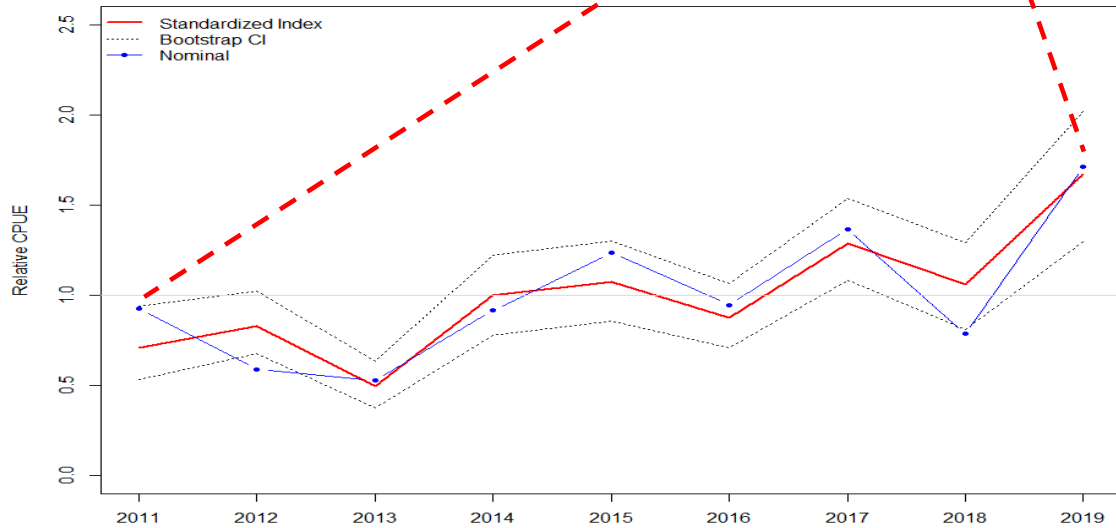
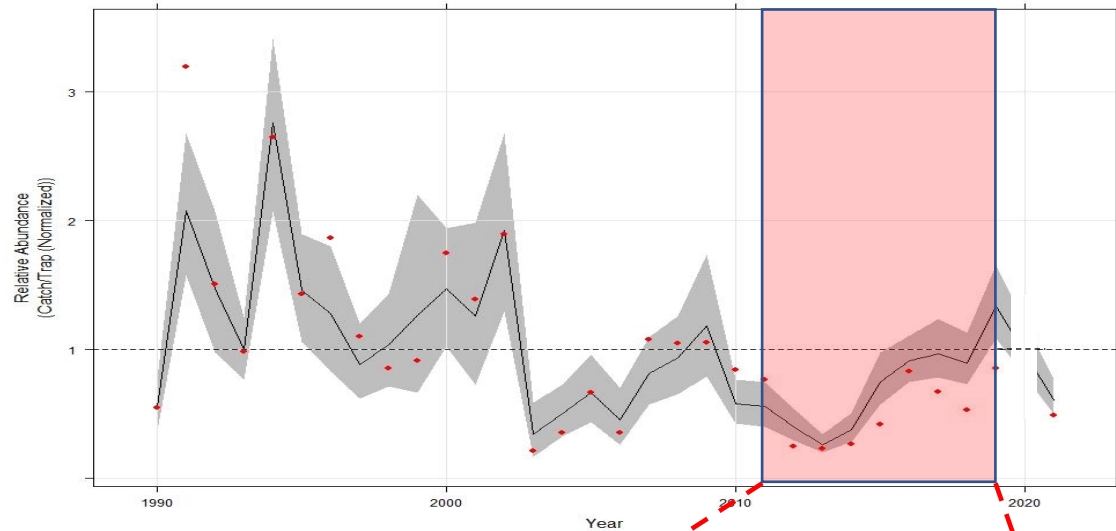
# Red Snapper



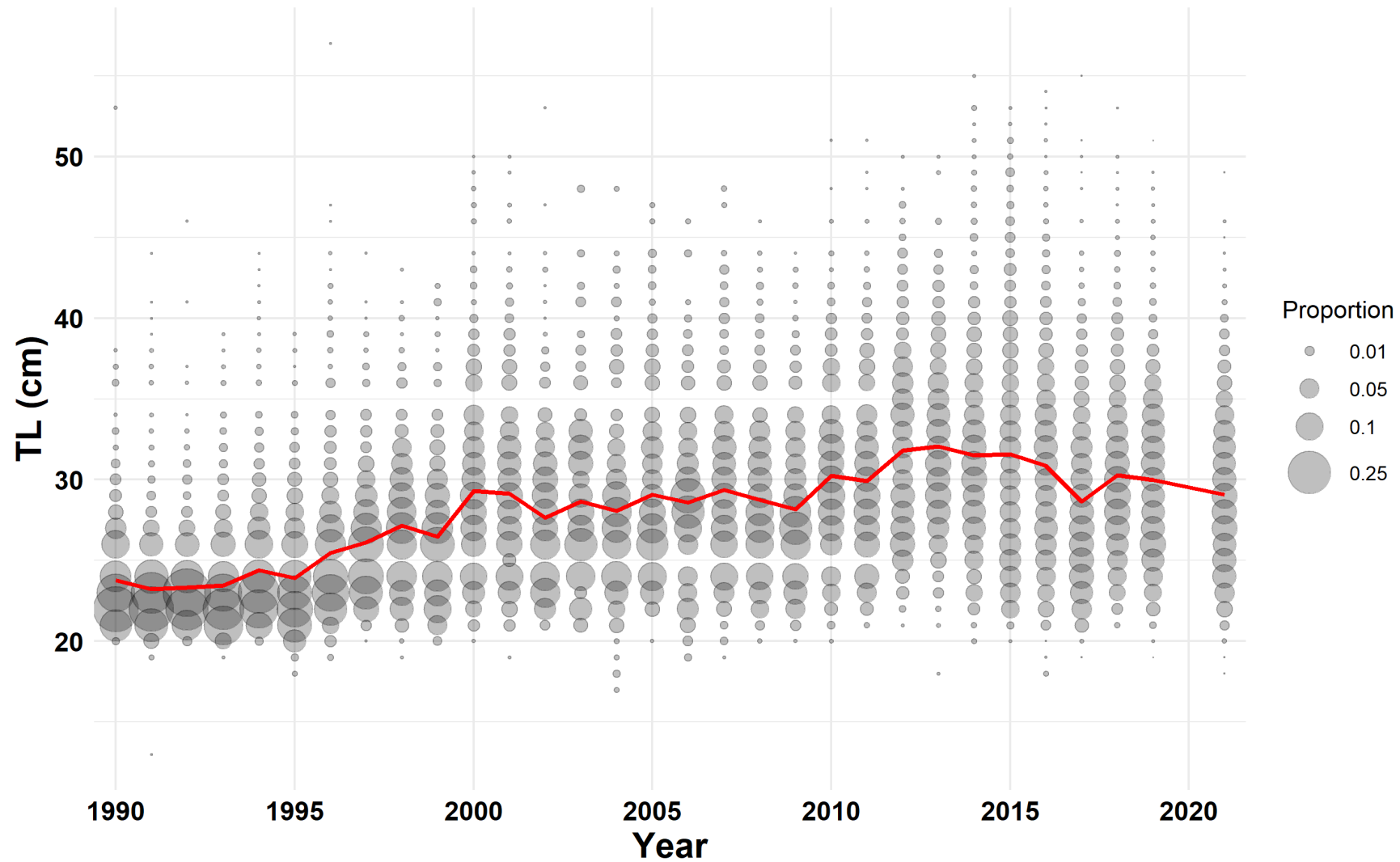
# Red Snapper



# Vermilion Snapper

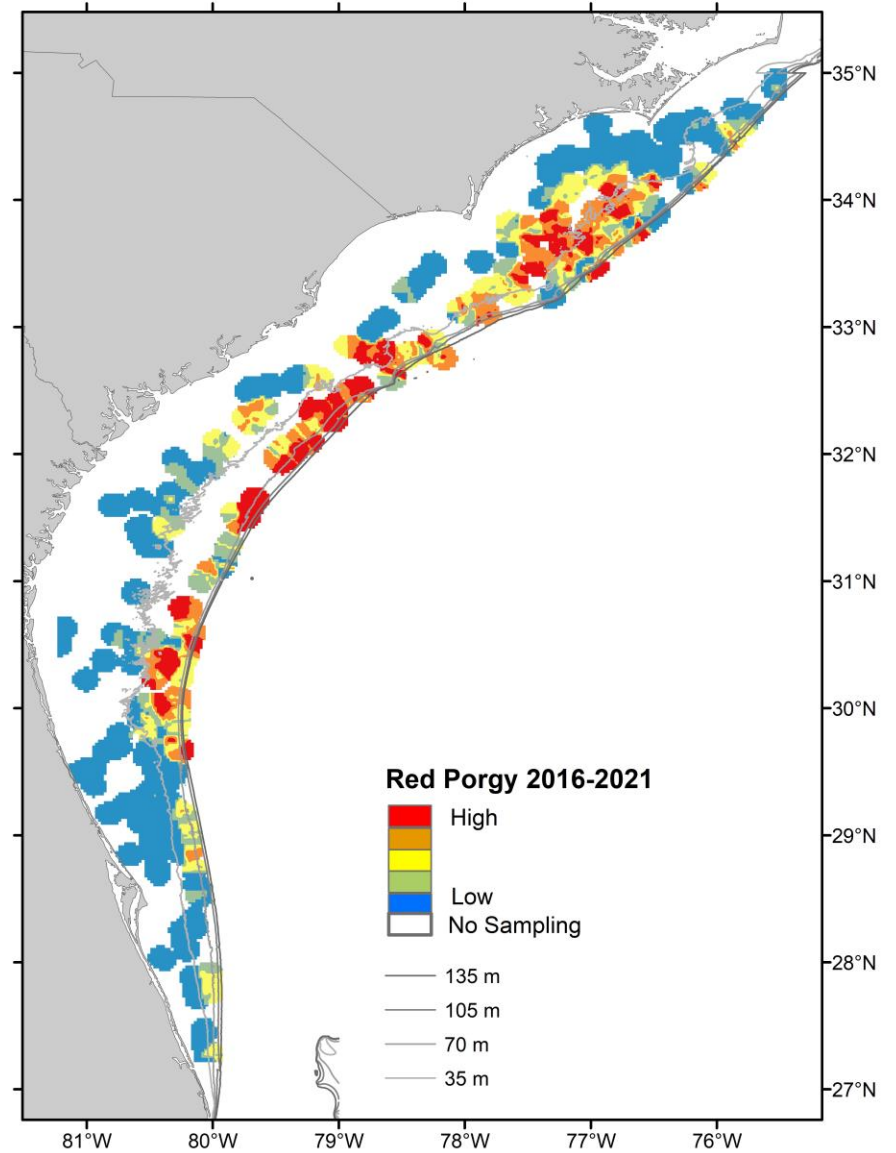
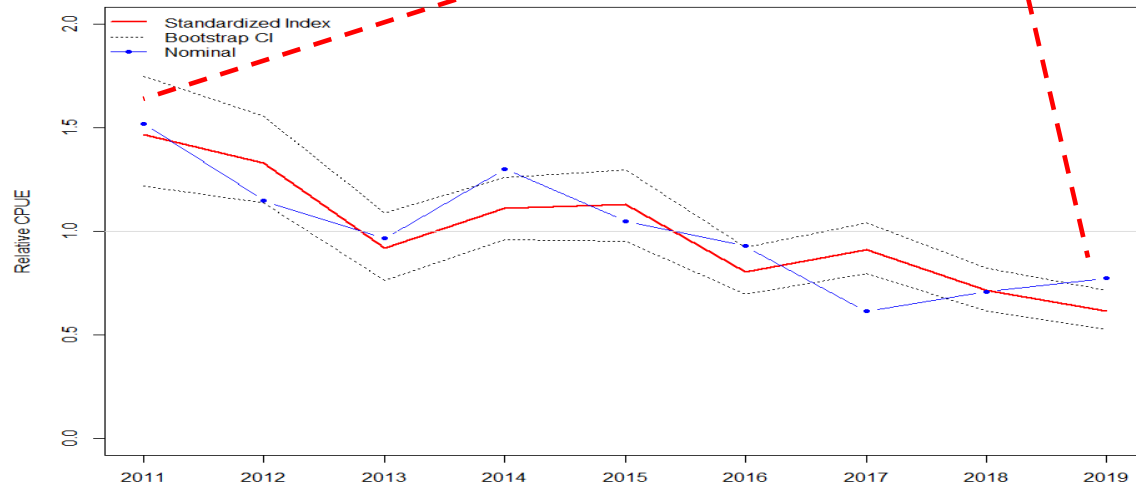
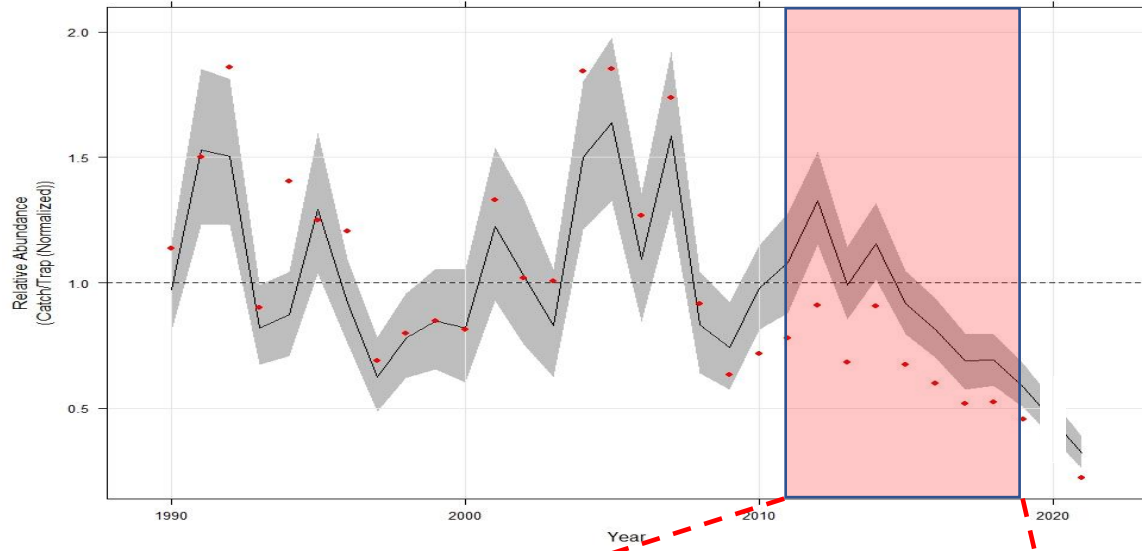


# Vermilion Snapper

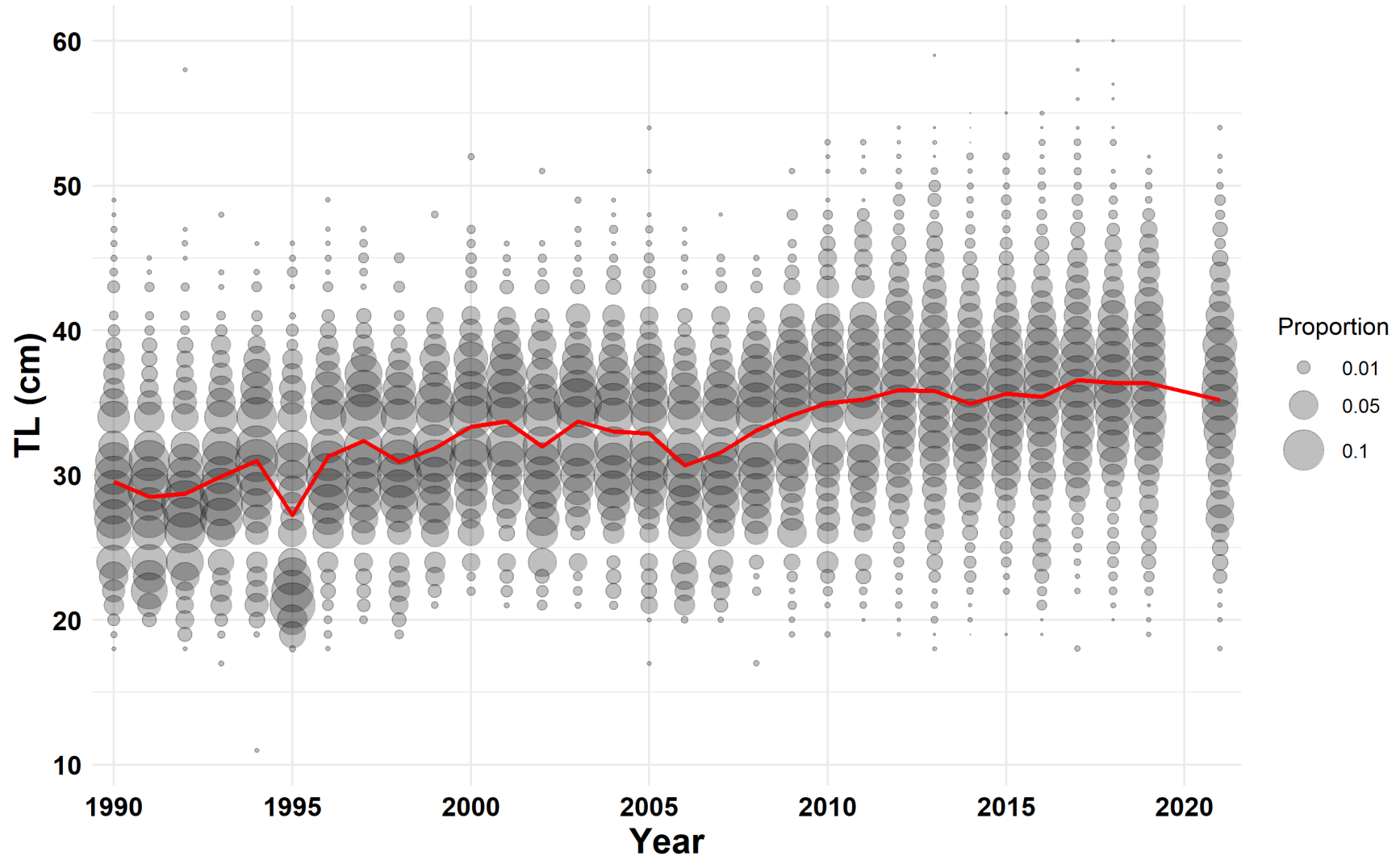




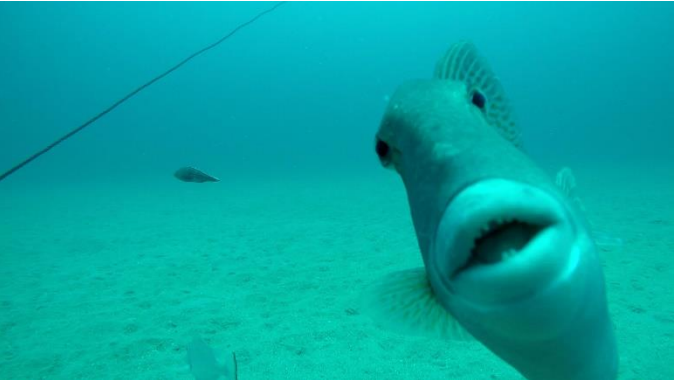
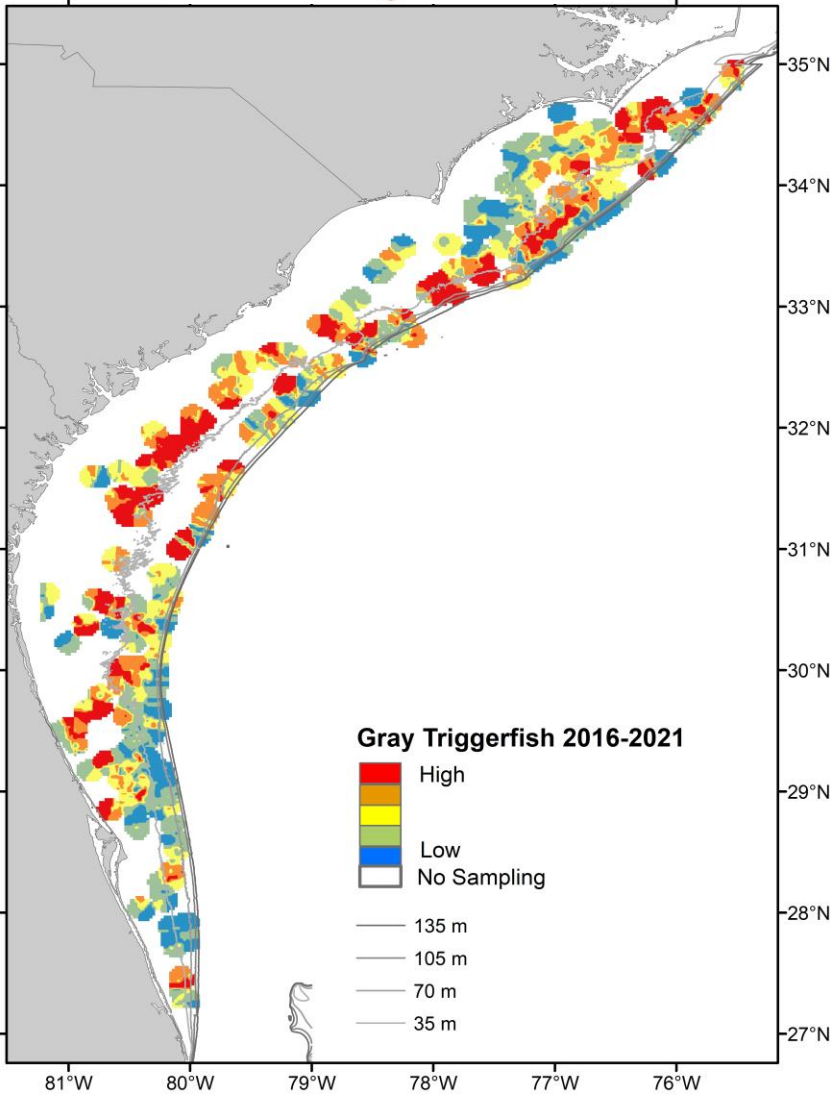
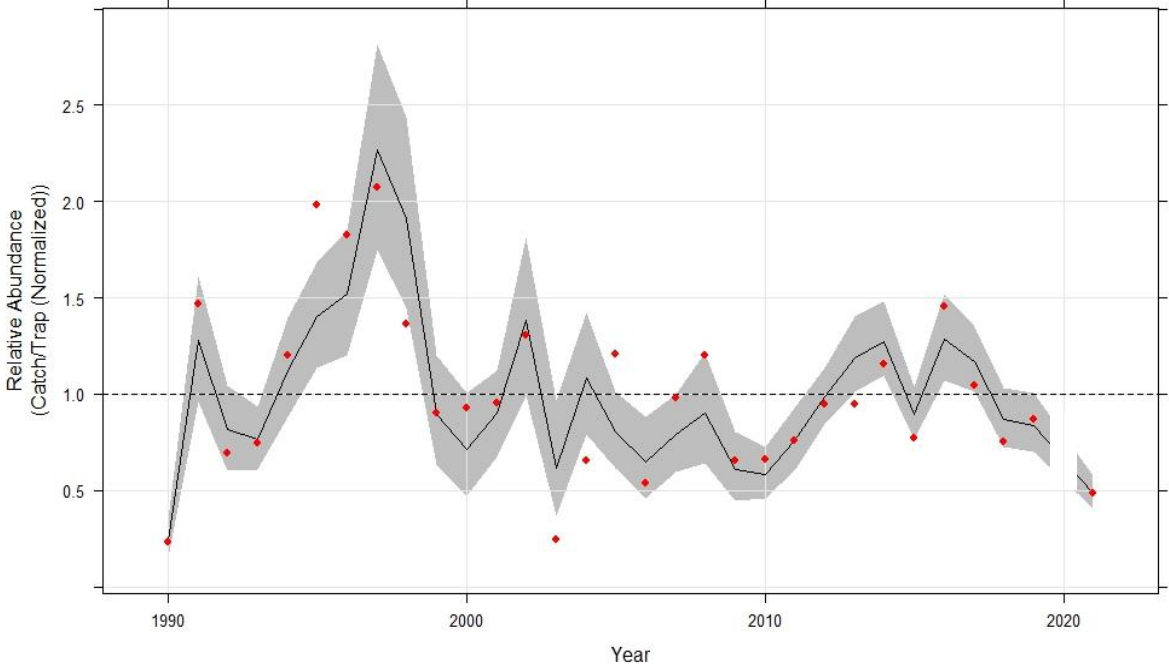
# Red Porgy



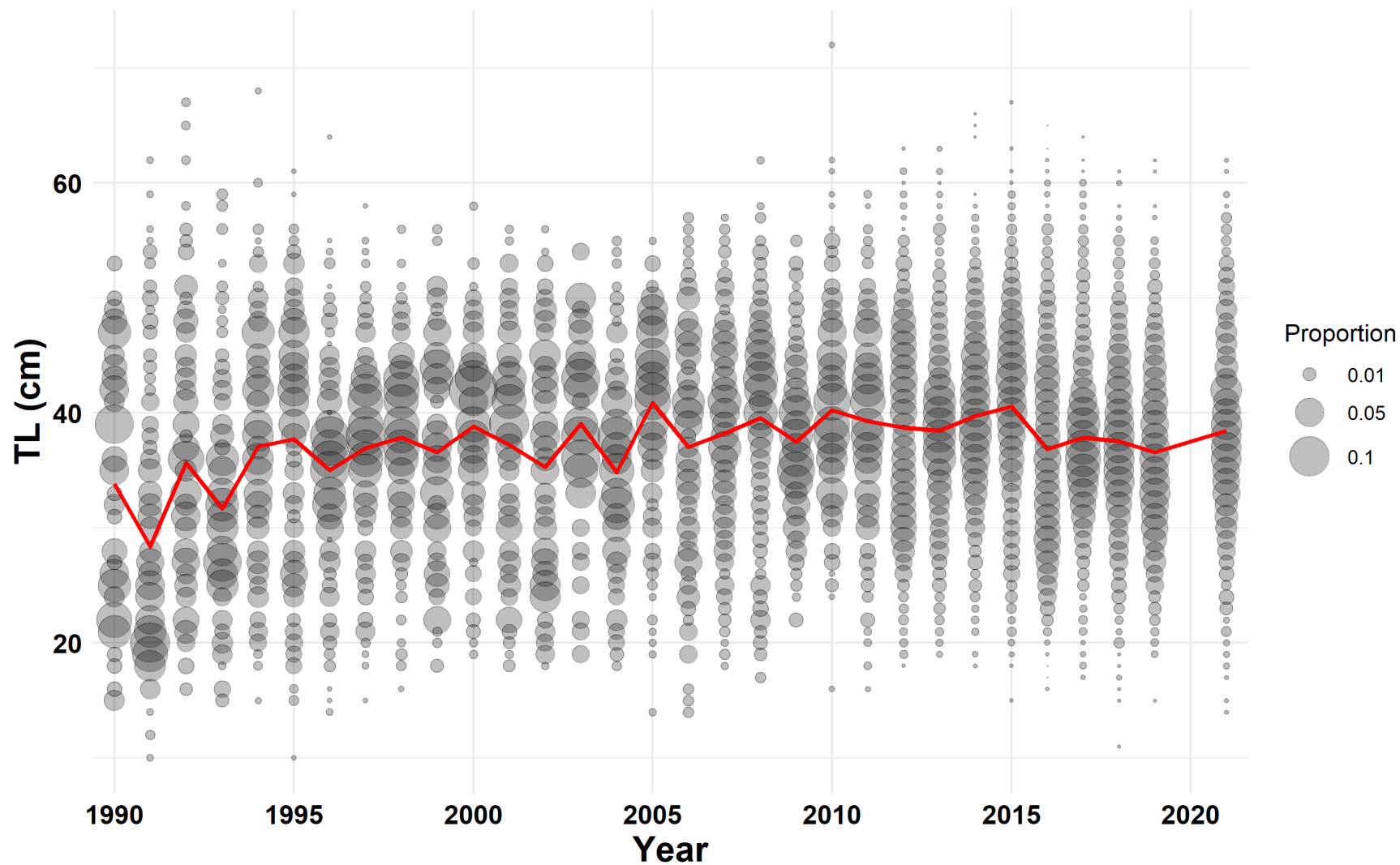
# Red Porgy



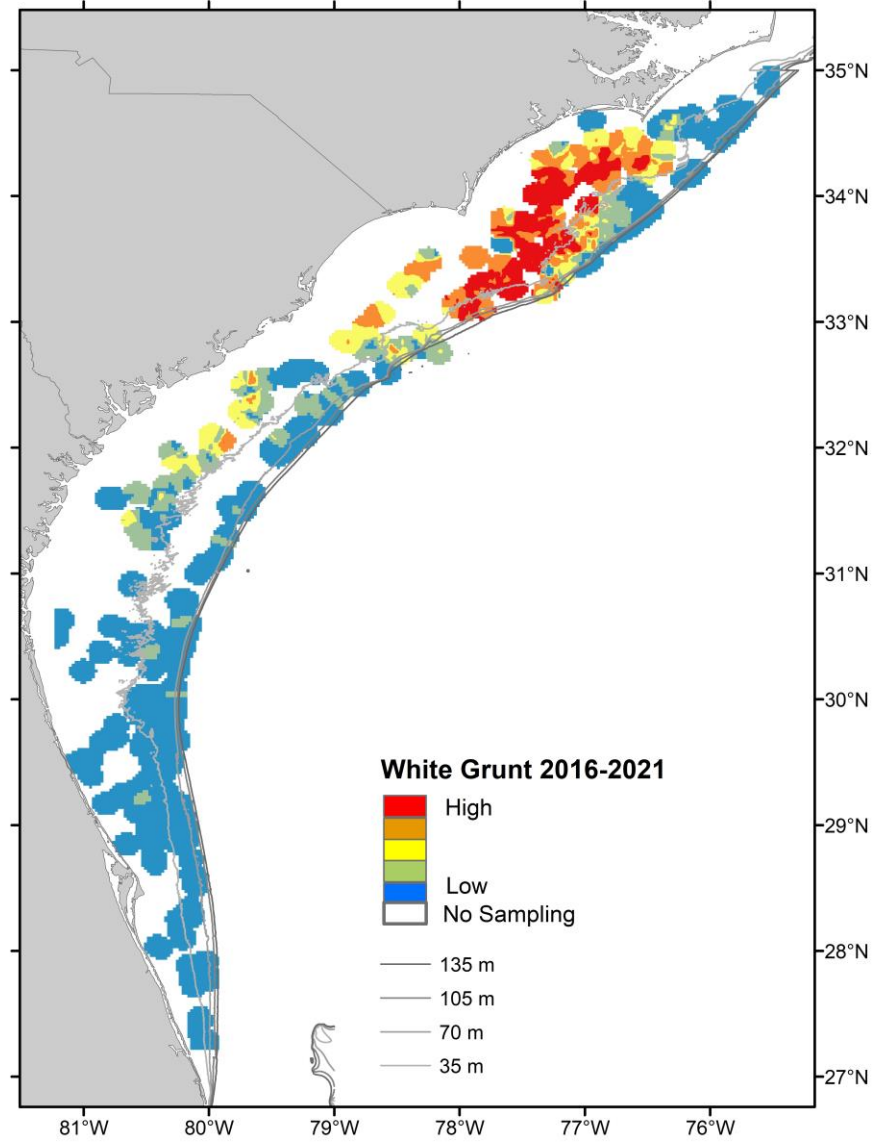
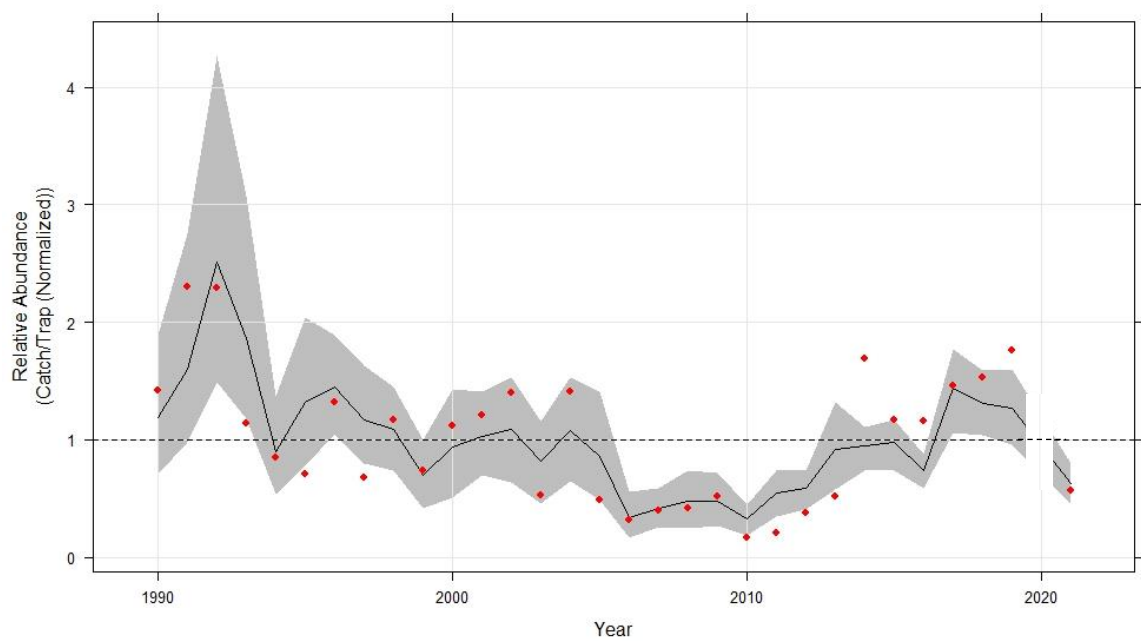
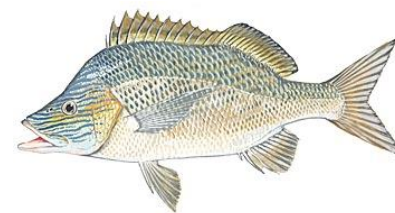
# Gray Triggerfish



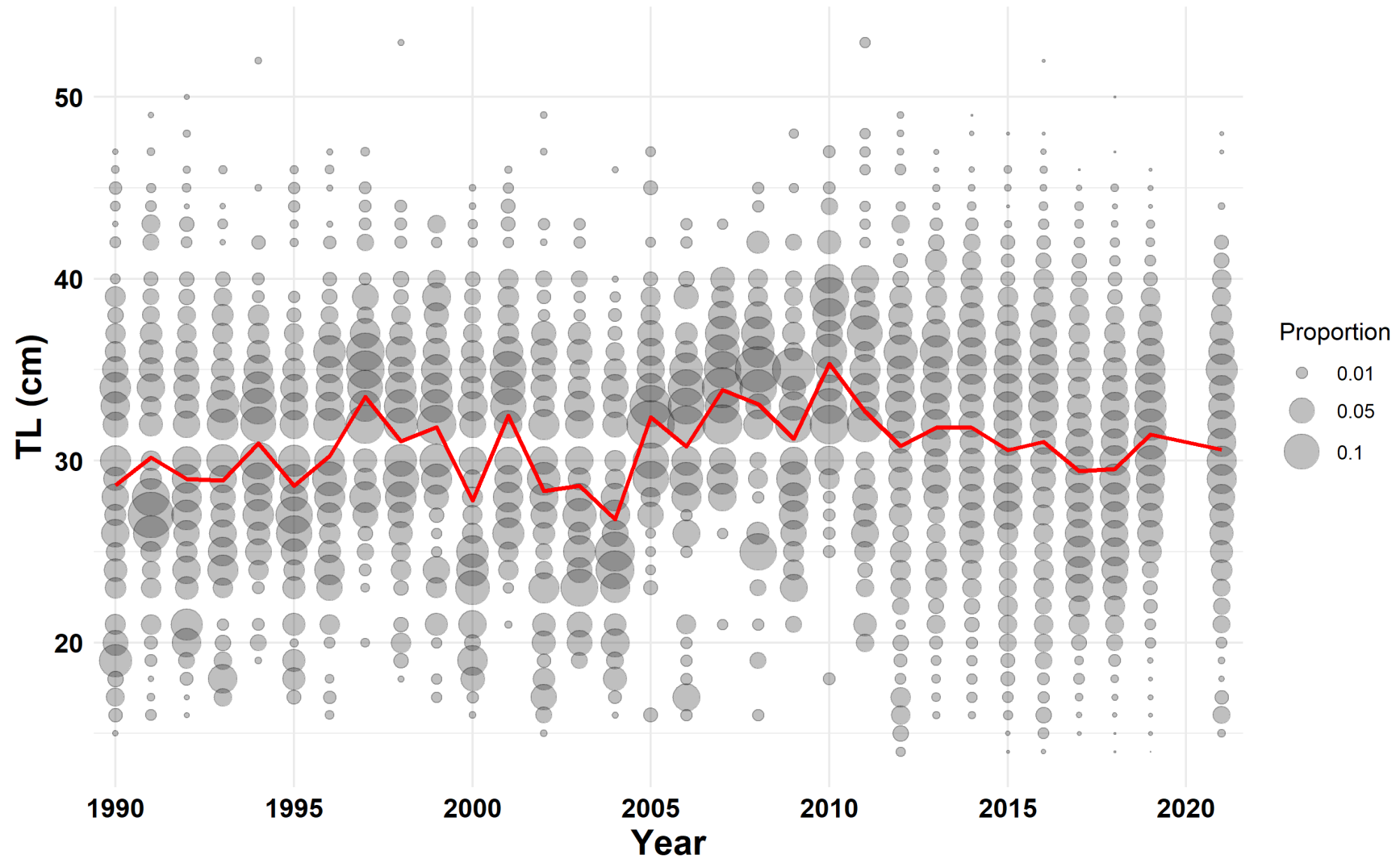
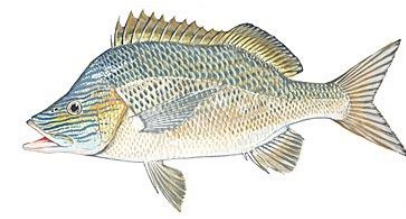
# Gray Triggerfish



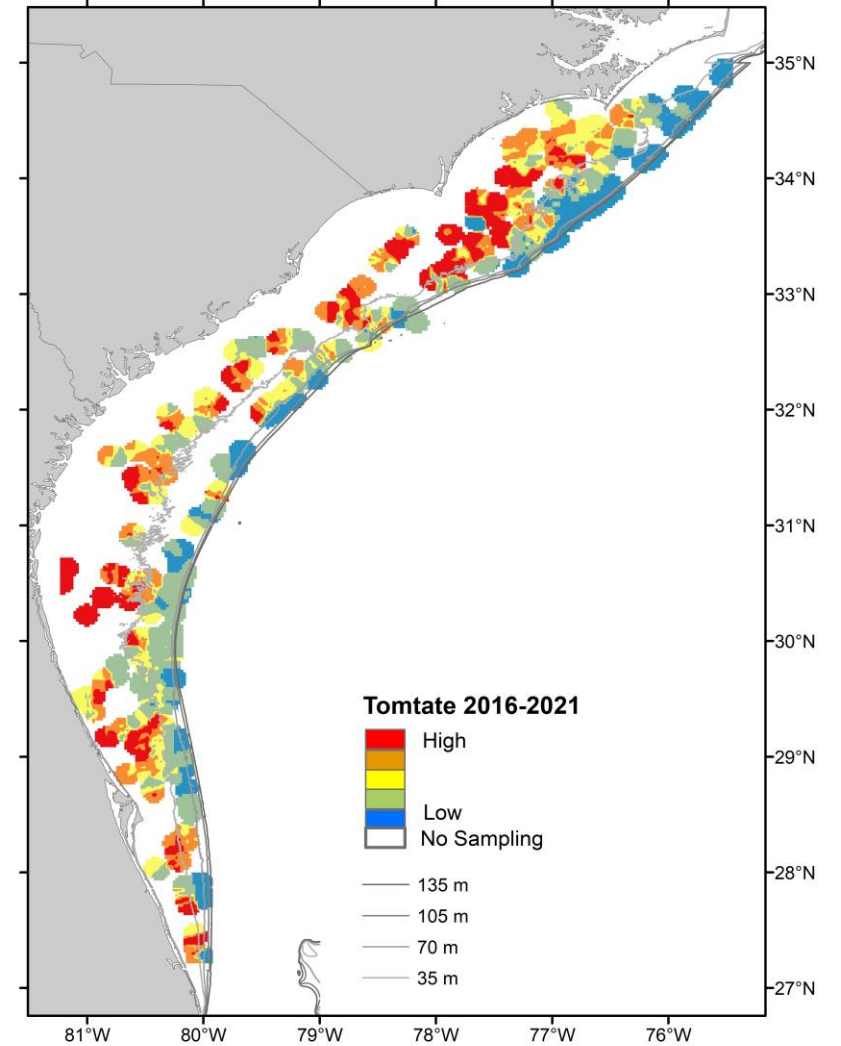
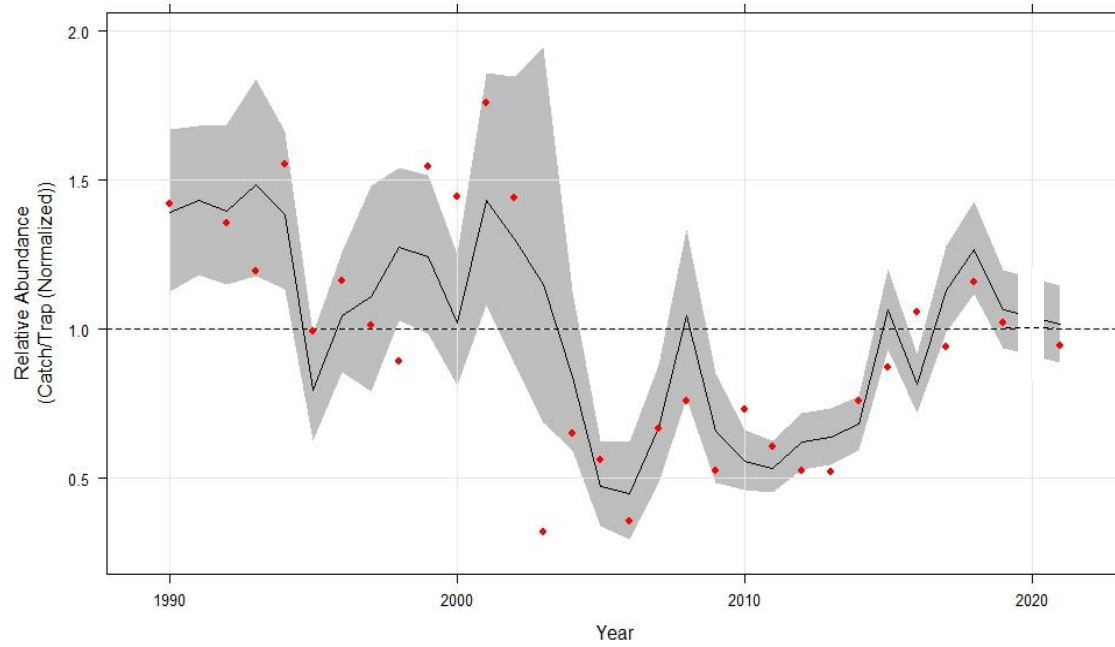
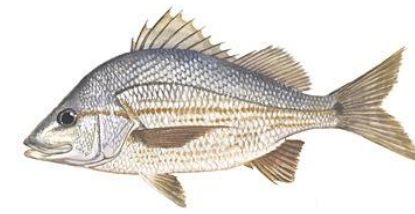
# White Grunt



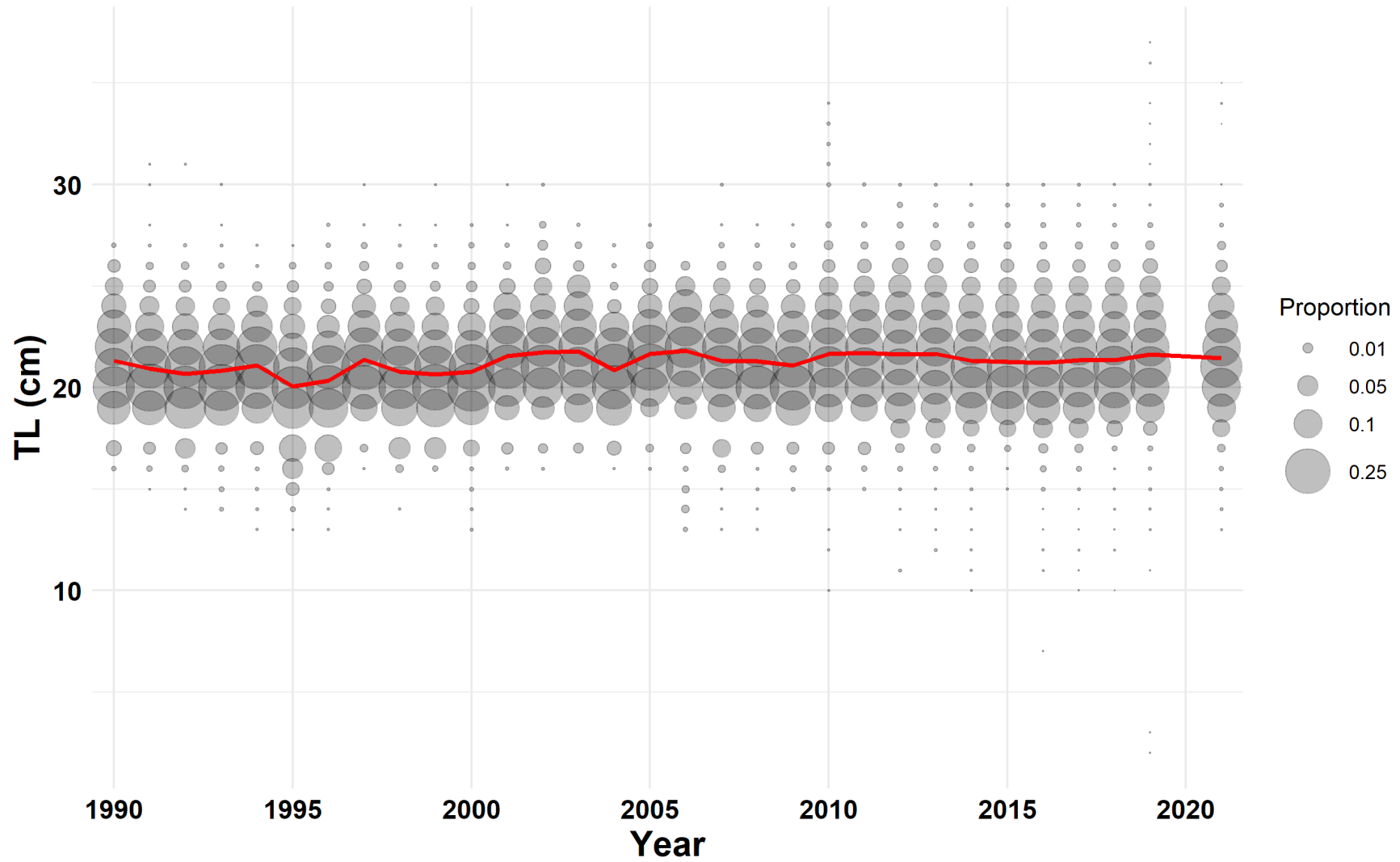
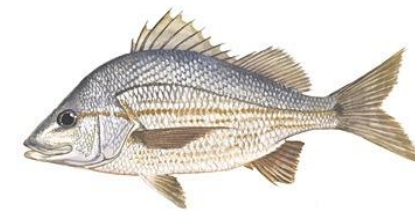
# White Grunt



# Tomtate



# Tomtate





# 2022 SERFS Plans



## Sampling Season:

Mid-April → Mid-October

≈ 100 days at sea

3 vessels- Chevron Trap

Complete scientific crew

Full life history sampling





**Acknowledgements:**

MARMAP/SEAMAP-SA/SEFIS  
Staff & Students  
Research Vessel Crews  
*Past and Present*

NOAA funding  
SCDNR support



Questions?