



# Atlantic Renewable Energy Program Update

---

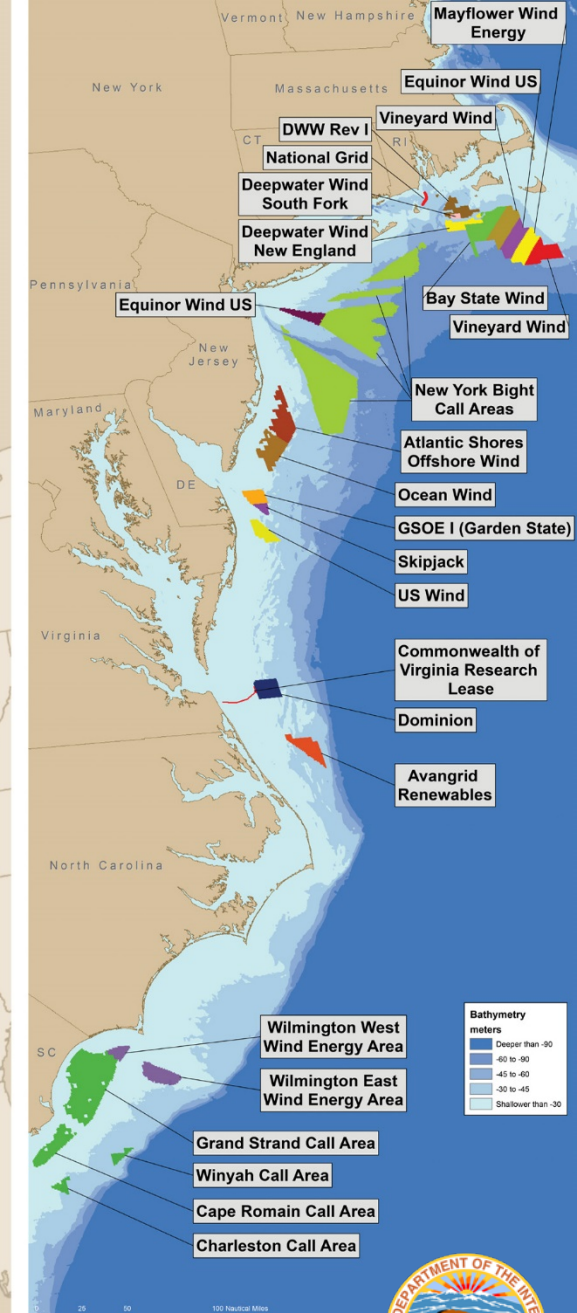
South Atlantic Fisheries Management Council  
Habitat Advisory Panel  
April 16, 2021

BOEM Office of Renewable Energy Programs





# Renewable Energy Program by the Numbers



# Leasing Withdrawals

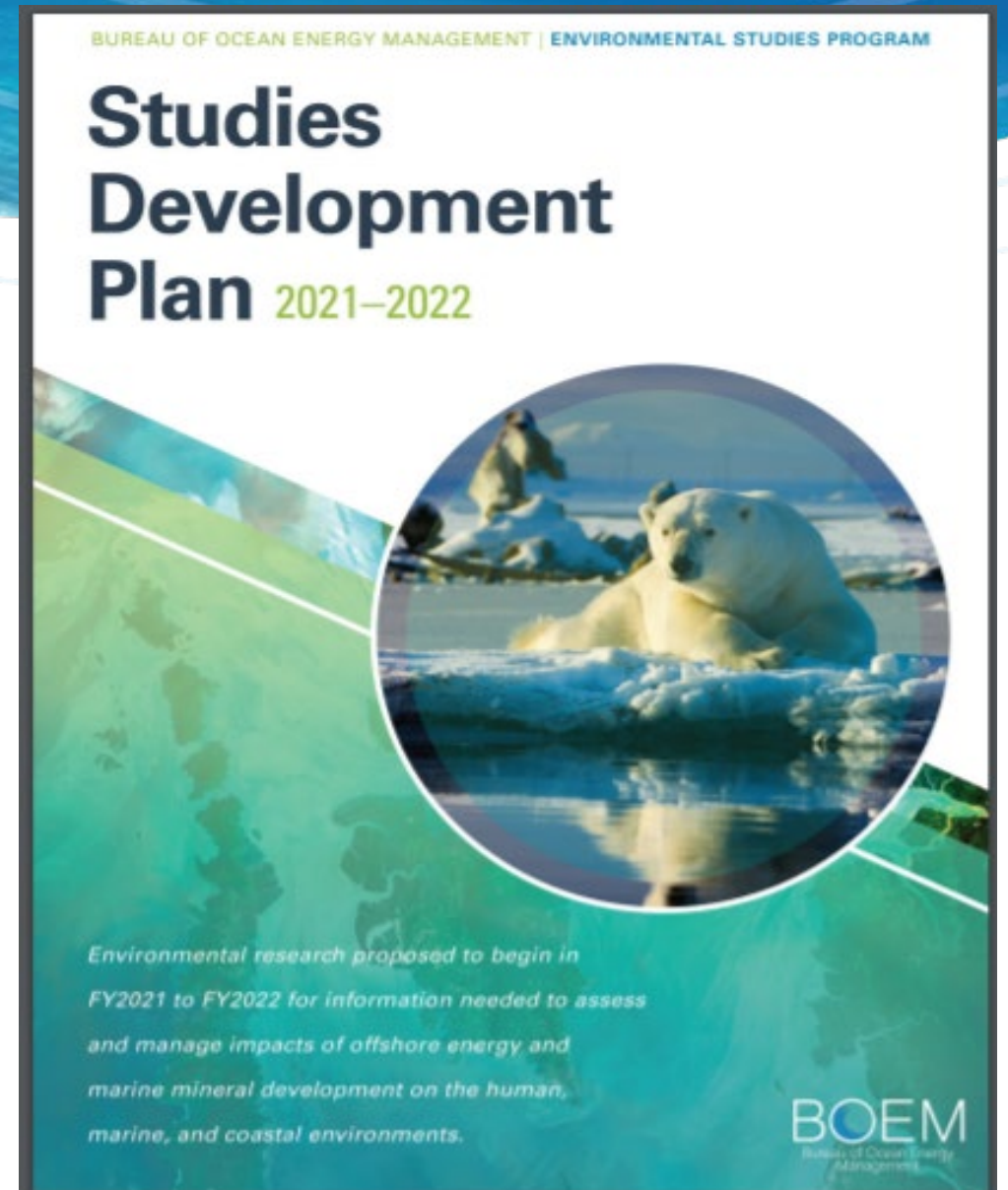
- **On September 25, 2020 the President issued “Withdrawal of Certain Areas of the United States Outer Continental Shelf from Leasing Disposition”**
- This withdrawal prevents consideration of this area for any leasing for purposes of exploration, development, or production during the 10-year period beginning on July 1, 2022, and ending on June 30, 2032.
- This withdrawal does not apply to leasing for environmental conservation purposes, including the purposes of shore protection, beach nourishment and restoration, wetlands restoration, and habitat protection.
- Nothing in this withdrawal affects the rights under existing leases in the withdrawn area.

<https://www.whitehouse.gov/presidential-actions/presidential-determination-withdrawal-certain-areas-united-states-outer-continental-shelf-leasing-disposition/>



# Environmental Studies Program

- BOEM just concluded solicitation for 2022 study ideas last winter
- Study ideas are reviewed by the Standing Committee on Offshore Science and Assessment (COSA) convened under the National Academy of Sciences
- Results of studies are incorporated into BOEM environmental assessment and decision-making process





Bureau of Ocean Energy  
Management

BOEM.gov



Brian Hooker | [brian.hooker@boem.gov](mailto:brian.hooker@boem.gov) | 703-787-1634