



SAFMC Citizen Science Initiative:

Program Development Update

December 8, 2016



SAFMC December 2016 Meeting

SAFMC Citizen Science Program

Working definition for SAFMC:

“A growing field in which trained members of the public collaborate and engage with scientists in the inquiry and discovery of new knowledge.”

Vision Statement:

“more collaboration + more data + more trust = better management”

Mission Statement:

“Improve fisheries management through collaborative science”



2016 – Program Development

January 2016:

- *SAFMC Citizen Science Program Design Workshop*
- *Council Cit Sci Organizing Committee drafts Blueprint*

March 2016:

- *Council Reviews and Adopts SAFMC Citizen Science Program Blueprint*

May 2016:

- *Council Staff Present Citizen Science Program Development Efforts for NMFS QUEST Webinar Series*



2016 – Program Development *(cont.)*

July 2016:

- ***Council Cit Sci Organizing Committee present Council's work at International Marine Conservation Congress***

September 2016:

- ***Citizen Science Council Committee is initiated***

November 2016:

- ***NMFS Grant Opportunity – kickstarter project***



2016 – Council Investment

Total Investment To-Date: \$110,000

- *Staff time for coordinating 2015-2016 activities -
 - *3 primary staff; other staff support: \$37,000**
- *Sampling with scientists/fishermen - \$28,000*
- *January 2016 Workshop - \$35,000 (plus Sea Grant support)*
- *IMCC Participation (2 staff and 1 Council member) - \$10,000*



SAFMC Citizen Science Program – *Needs*

Dedicated Council staff (FTE) to operate program

Objectives/Activities

Long term –

- Implement/organize a program based on blueprint

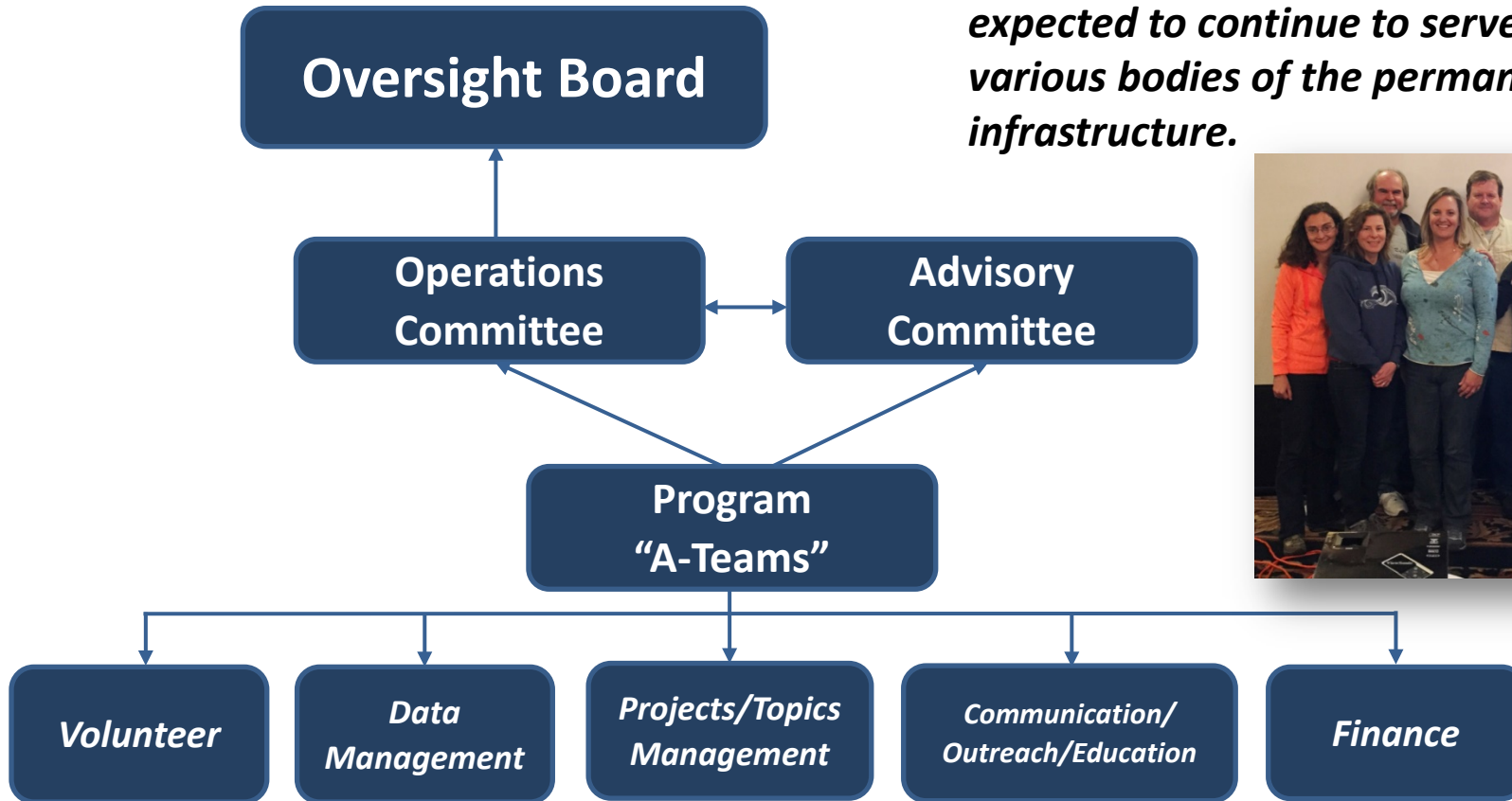
Short term –

- Support projects that will become inclusive of providing program support;
- Initiate a kickstarter project;
- Develop program partnerships - engage other organizations and agency partners on a successful project



Tiered Program Structure*:

*****Organizing Committee members are expected to continue to serve key roles in various bodies of the permanent infrastructure.***



SAFMC Citizen Science Program – *Challenges*

1. Funding –

- Opportunities to directly receive funding are limited (*can only receive direct funds from NMFS*)
- Program will need to be creative on this front (*partnerships will be key*)

2. Program Staff –

- No dedicated staff to pursue program level support or project funding and general organization

3. Initial Project –

- Need for a successful project that is applied directly to the science and management used by the Council;
- Risk - if first project fails, the program is at risk of failing.



SAFMC Citizen Science Program – *Pursuit of Funding*

2016 Efforts:

- Initial budget request to NMFS (\$173,000)
- Exploration of other program partnerships and project-level funding opportunities
- Partners begin approaching Council staff about engagement on Citizen Science projects
- Internal NMFS grant opportunity – Fishery Information System program focused on Electronic Reporting/Monitoring projects
- Submission of citizen science program kickstarter project idea – *scamp grouper discard proposal*



Options for Pursuing Kickstarter Project

	OPTION #1: No Program/ Staff Support	OPTION #2: Temporary Staff Support	OPTION #3: Full Time Staff Support
Activity:	<ul style="list-style-type: none"> • Build mobile app/database to receive data • Project is open to anyone; no oversight 	<ul style="list-style-type: none"> • Build mobile app/ database • Temporary staff for project oversight 	<ul style="list-style-type: none"> • Build mobile app/ database • Permanent FTE to develop program and manage project
Benefits:	<ul style="list-style-type: none"> • Low cost • Mobile app is built 	<ul style="list-style-type: none"> • Moderate cost • Temporary staff 	<ul style="list-style-type: none"> • Program has support to get off the ground
Risks:	<ul style="list-style-type: none"> • Success rate is low • No dedicated staff Project disorganized & participants not satisfied • Less chance data could be used 	<ul style="list-style-type: none"> • Success rate is moderate • Staff time/ availability limited • Buy-in limited • Temporary staff requires supervision • Data may not be available in time 	<ul style="list-style-type: none"> • Success rate is high • Cost is also high

Items to Consider for Next Steps:

- Existing staff time/resources to work on program – not sustainable
- Budgeting for full-time dedicated program staff with existing resources
- Kickstarter project funding
- Risk of losing stakeholder support and program development momentum
- Missed opportunities for partnership development





<http://www.safmc.net/citizen-science-initiative>



Imagine what my eyes have seen...