

Science, Service, Stewardship



SAFMC Meeting
December 2016

Report on Compliance for Commercial and Headboat Logbook Reporting Requirements

Southeast Fisheries Science Center

**NOAA
FISHERIES
SERVICE**

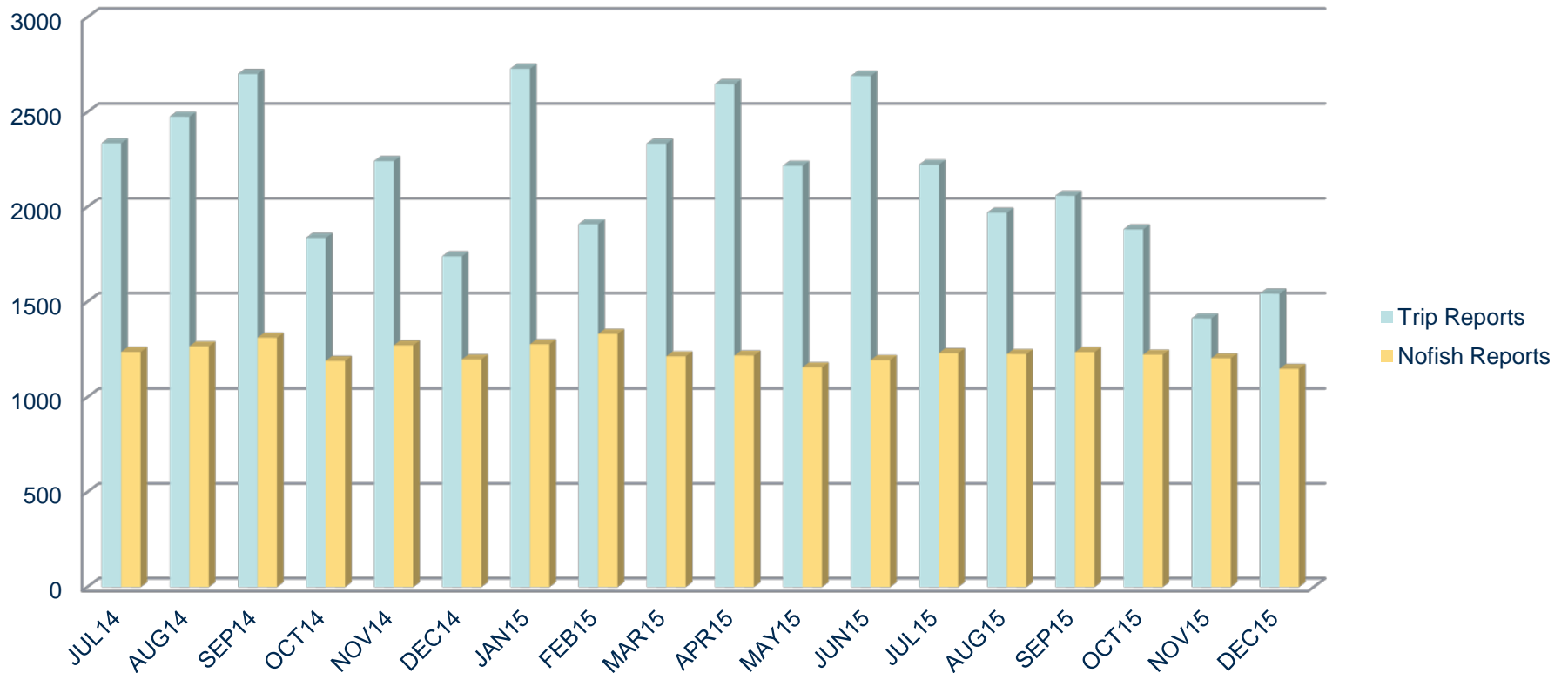


South Atlantic (SAT) Commercial Vessel Logbook Reporting Timeliness between July 2014 and December 2015



Commercial Vessel Logbook System 2014 -15

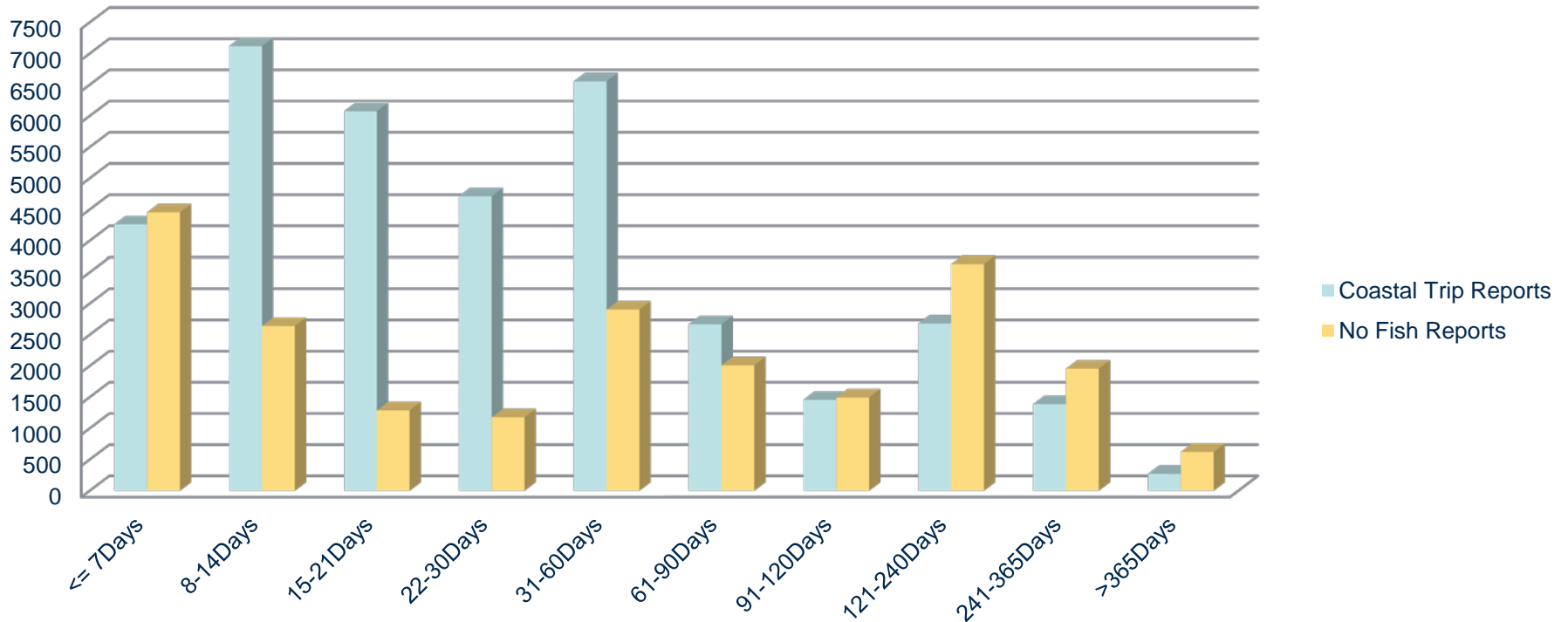
Total Logbook SAT Trip and No Fishing Reports Received by Month





Commercial Vessel Logbook System 2014 - 15

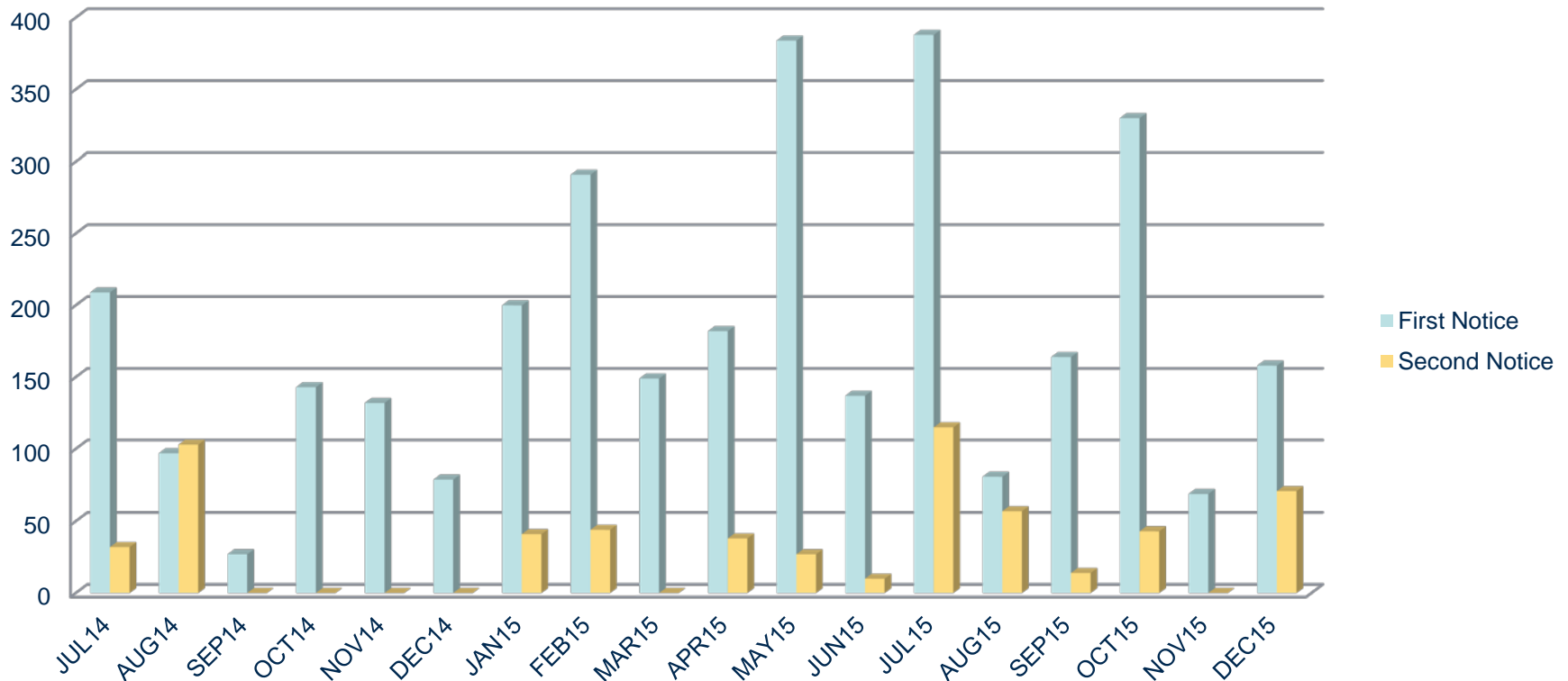
SAT Coastal Trip and No Fish Report Counts by Number of Days reported after Trip Landing Date Between July 2014 and December 2015





Commercial Vessel Logbook System 2014 - 15

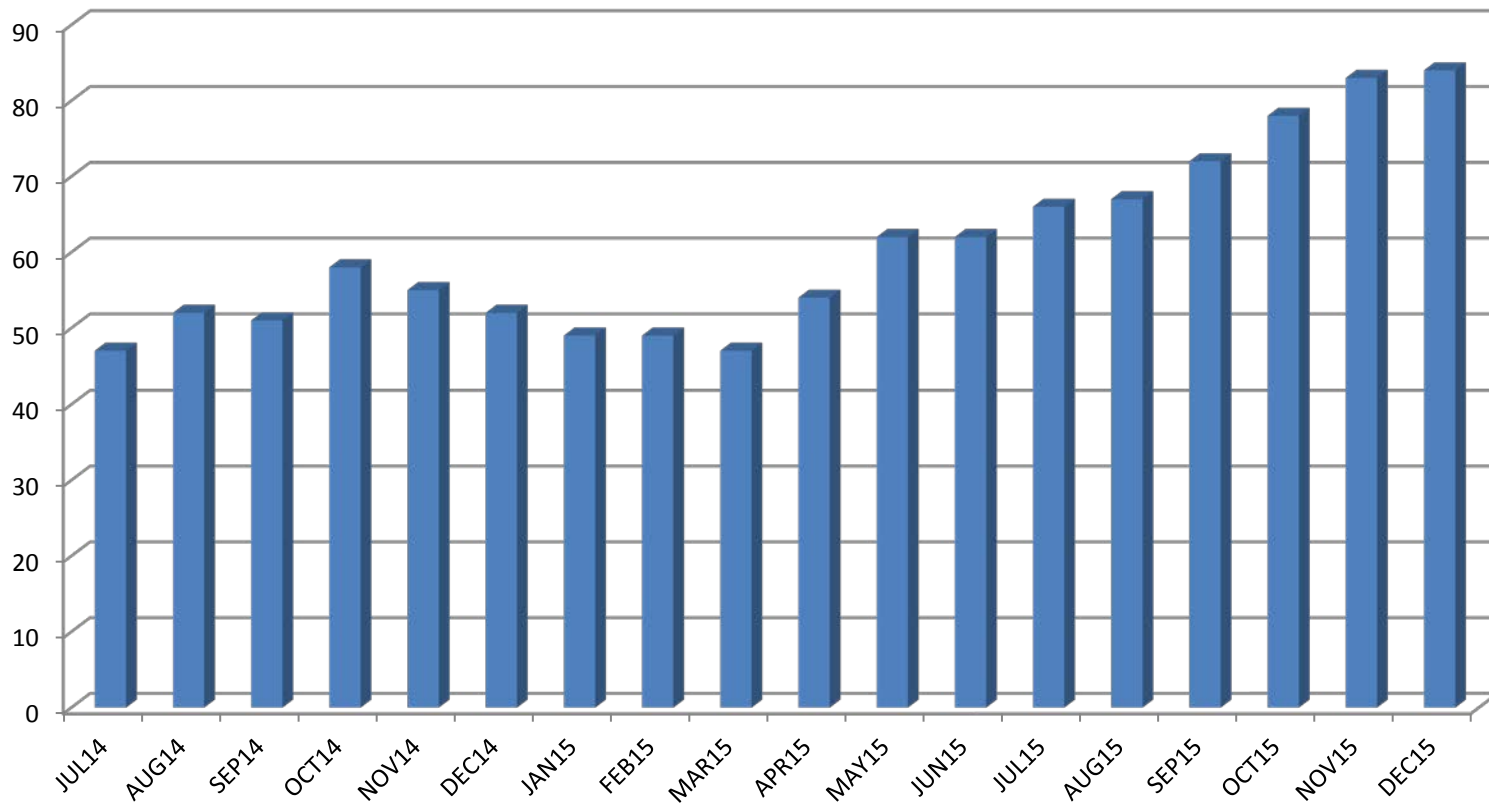
SAT Coastal Trip Report Sendback Counts





Commercial Vessel Logbook System 2014 - 15

**Nonreporting Vessel Count by Month of Vessels with Active Permits Between July 2014
and June 2015**



*Contains both SAT and GOM Vessels



Headboat Logbook Reporting Compliance Measures and Timeliness between January 2015 and August 2016



SRHS Compliance Measures

One week past due:

- Port agents notify delinquent vessels and attempts to reconcile late records

Two weeks past due:

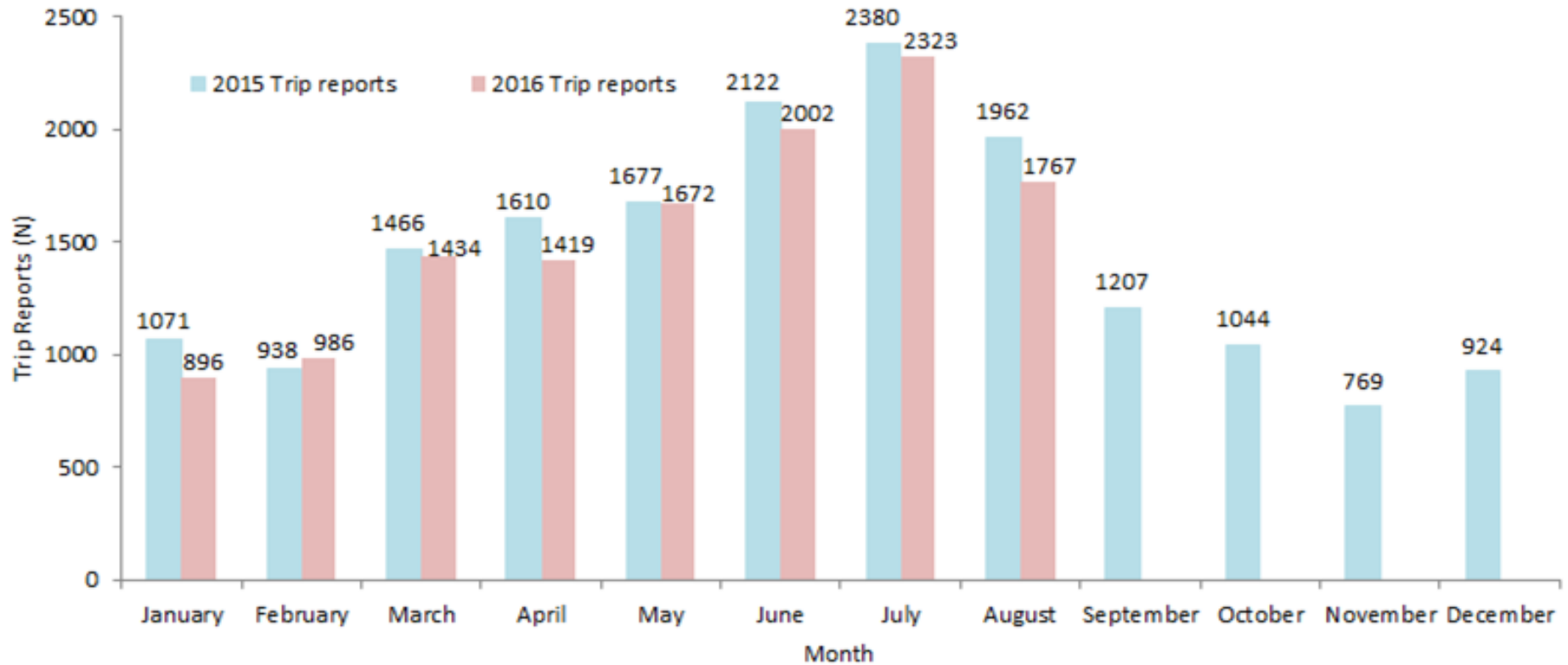
- Vessel is sent an automated email reminder

Three weeks past due:

- Delinquent vessels sent a warning letter
- Vessel permit renewal is placed on hold with the SERO Permit Office
- Port agent continues efforts to reconcile late reports
- OLE notified of egregious offenders

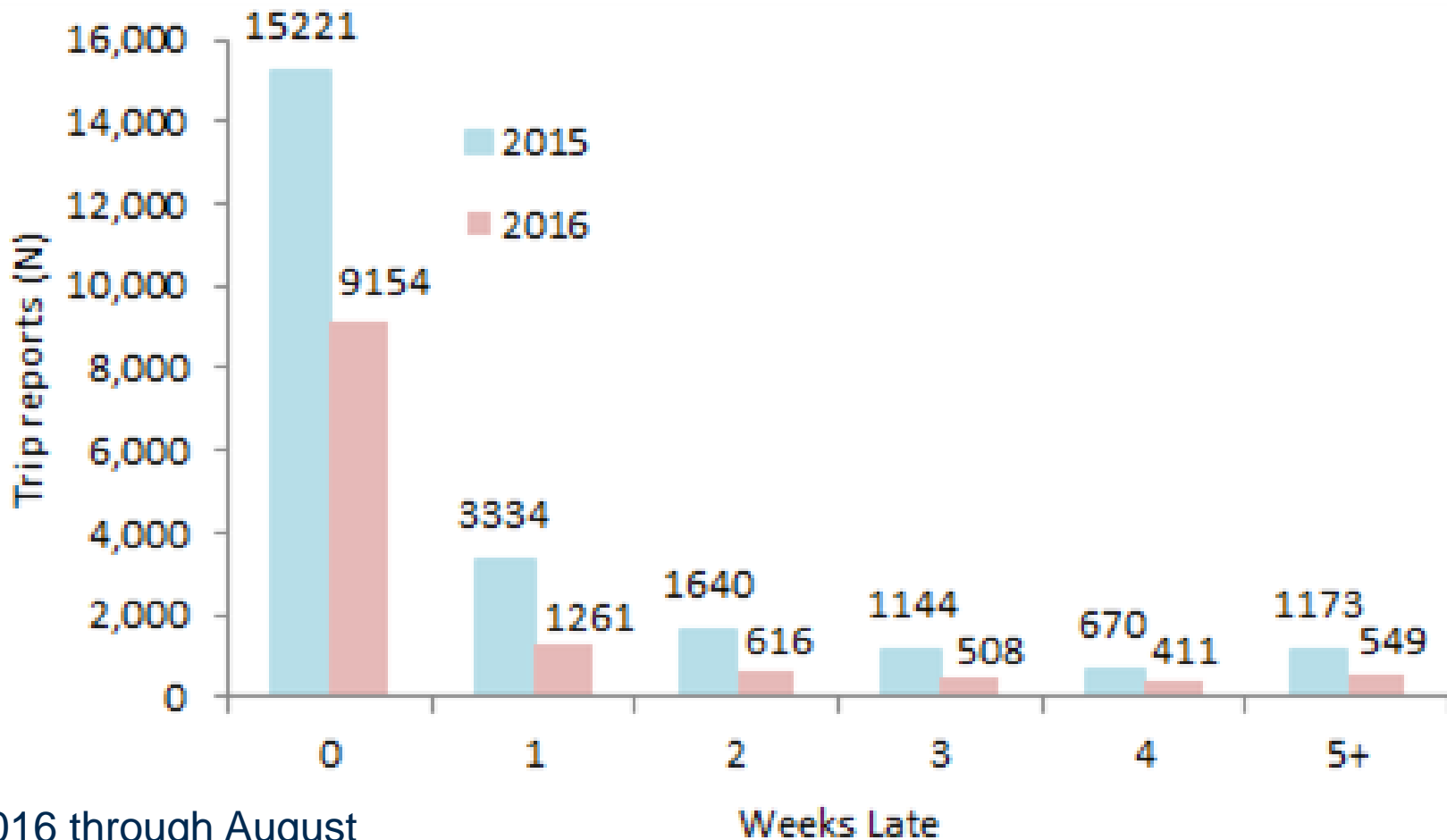


Total SAT Headboat Trip Reports





SAT Late Headboat Trip Reports



*2016 through August



Delinquency Percentage of SAT Headboat Trip Reports

	Weeks Late					
	0	1	2	3	4	5+
2015	66%	14%	7%	5%	3%	5%
2016*	73%	10%	5%	4%	3%	4%
*2016 through August						