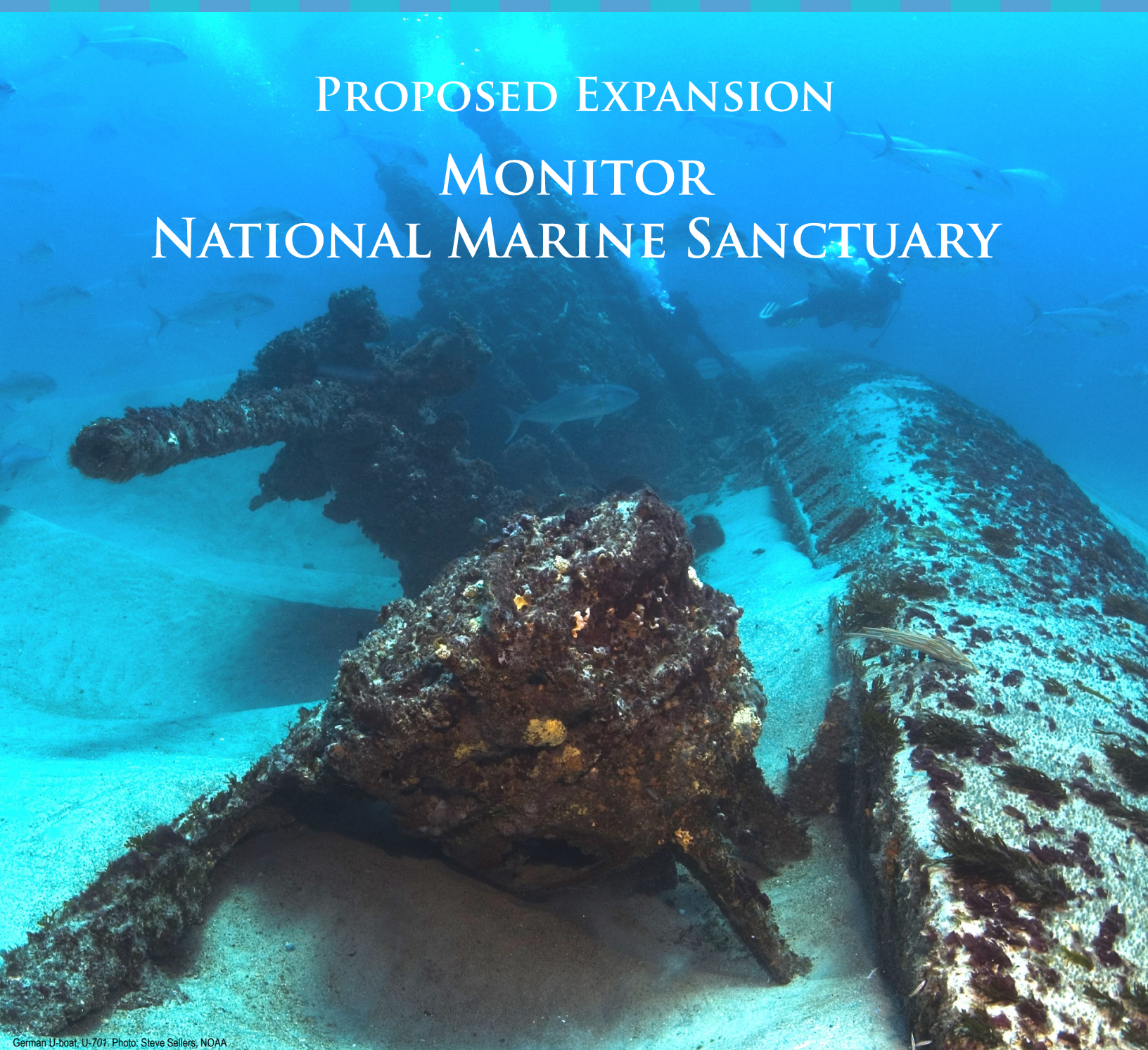


# PROPOSED EXPANSION MONITOR NATIONAL MARINE SANCTUARY



German U-boat, U-701. Photo: Steve Sellers, NOAA

After several years of scientific and archaeological assessment and in coordination with the public, NOAA is proposing to expand Monitor National Marine Sanctuary off North Carolina's Outer Banks to include additional maritime heritage resources. The proposed expansion would protect a nationally significant collection of shipwrecks that currently have little or no legal protection, including one of America's only World War II battlefields.

<http://monitor.noaa.gov/management/expansion.html>

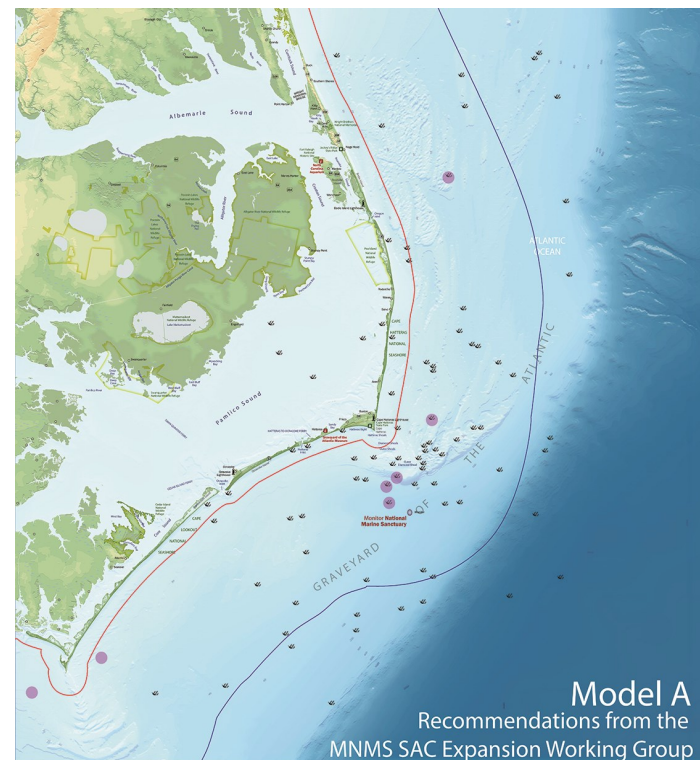


# WHAT IS BEING PROPOSED

Members of the Monitor National Marine Sanctuary Advisory Council Expansion Working Group presented four possible expansion models to the advisory council and the public on June 5, 2014. These models were approved by the advisory council and recommended for public review. Other potential models may arise during the public scoping process. NOAA is seeking public input on these four possible expansion models.

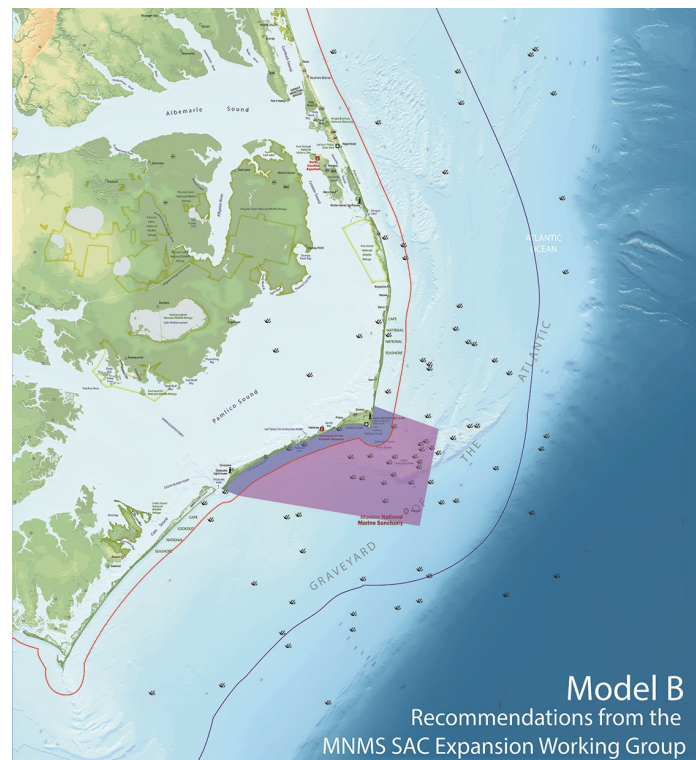


## MODEL A



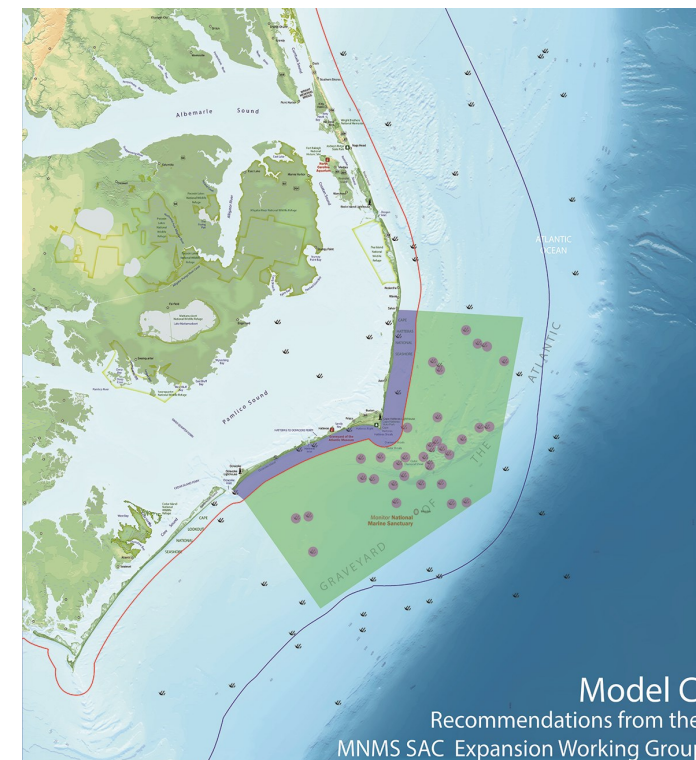
Model A includes isolated shipwreck sites in federal waters only. Boundaries would be restricted to select wreck sites and be discontinuous. Under this model, individual shipwrecks are protected and managed. These include the USS YP-389; the WWII German submarines U-85, U-352, and U-701; the HMT *Bedfordshire*; the *Diamond Shoals Lightship*, and the *E.M. Clark*.

## MODEL B



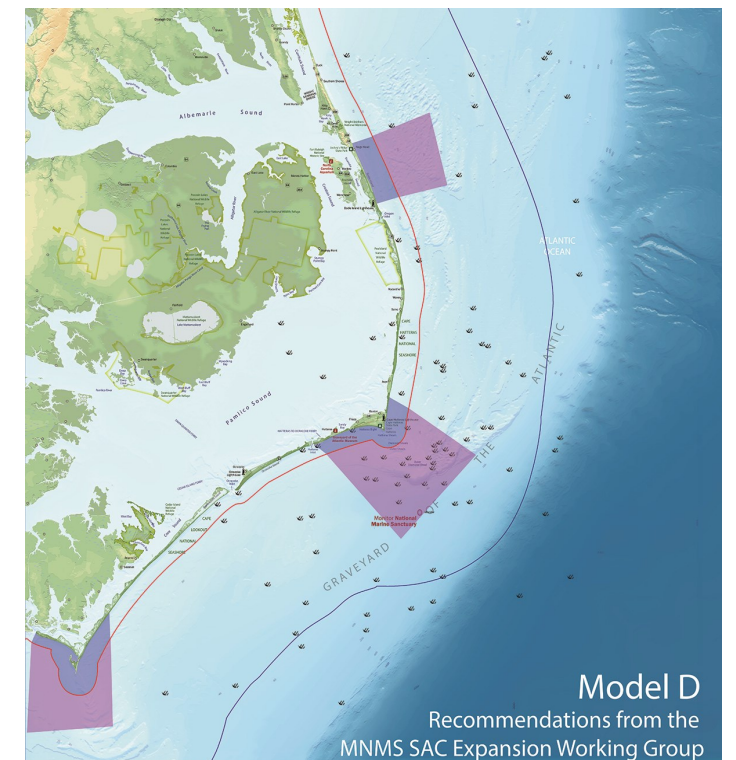
Model B includes a small area centered on the waters off Cape Hatteras. Boundaries are established to include several wrecks and adjacent waters and culturally significant features in the landscape. This model includes at least 65 known shipwrecks within federal waters and, if state waters are added, 150 additional known wrecks. Many historic themes and timeframes are represented, including the period of North American exploration, several armed conflicts and maritime commerce.

## MODEL C



Model C includes a large area centered off Cape Hatteras that includes many historically significant wrecks in federal and potentially state waters. The model includes sanctuary boundaries around individual sites, and designates a non-regulatory study area. This proposed model encompasses the majority of the most culturally valuable wrecks in the waters off Cape Hatteras and several representative wrecks from multiple periods of history.

## MODEL D



Model D includes three designated areas, each "capturing" both a representative collection of wrecks in federal and potentially state waters from many eras and vessel types, and the primary historically significant wrecks off of most of the Outer Banks. This model focuses on the protection and management of at least 100 known shipwrecks representing a wide range of historic and cultural significance in different areas off the Outer Banks.

For more detailed map information including a legend, visit <http://monitor.noaa.gov/management/expansion.html>



# JANUARY 8, 2016



NOAA announces plans to consider expansion of Monitor National Marine Sanctuary.

## PUBLIC COMMENT

The public is invited to submit comments to the agency on the proposed expansion. Comments on the proposal may be submitted via [www.regulations.gov](http://www.regulations.gov) using docket number NOAA-NOS-2015-0165.

# ENDS 3/18

## NEXT STEPS



### PROPOSED EXPANSION

Following the comment period, NOAA prepares a draft expansion proposal that includes potential boundaries and regulations.



### PUBLIC REVIEW

The public, relevant partners, tribes and other stakeholders have an opportunity to review the draft documents. NOAA considers these comments before making a final decision.



### FINAL DECISION

After reviewing the comments on the draft proposal, NOAA makes a final decision and prepares final documents. Before the expansion becomes effective, the Governor reviews the documents if state waters are included in the proposal.

**2-3 year  
process**



The merchant ship, *Dixie Arrow*. Photo: NOAA

For more than 40 years, Monitor National Marine Sanctuary has served as a special place honoring the iconic Civil War ironclad, USS *Monitor*, and the memory and service of Civil War sailors. We now have an opportunity to honor another generation of mariners that helped defend the nation during World War I and World War II. Expansion of Monitor National Marine Sanctuary would elevate the maritime legacy of coastal North Carolina; preserve important historical sites for future generations; promote increased access and stewardship; and provide economic benefits to coastal communities.

More than any other place in the United States, coastal North Carolina serves as a uniquely- accessible underwater museum and memorial to our nation's rich maritime history. It is also an ideal location to study and preserve historic wreck sites dating back to the Age of North American Exploration, the Revolutionary War, the Civil War, and perhaps most prominently, World War II's Battle of the Atlantic. With preservation, these resources offer historians, maritime enthusiasts, recreational divers, fishermen, beachgoers and outdoor adventure seekers the ability to experience this unique region and celebrate our nation's maritime heritage.

### To learn more about the expansion proposal, contact:

David Alberg, sanctuary superintendent  
Phone: 757-591-7326  
Email: [David.Alberg@noaa.gov](mailto:David.Alberg@noaa.gov)  
Web: <http://monitor.noaa.gov>

<http://monitor.noaa.gov/management/expansion.html>