



# NOAA FISHERIES

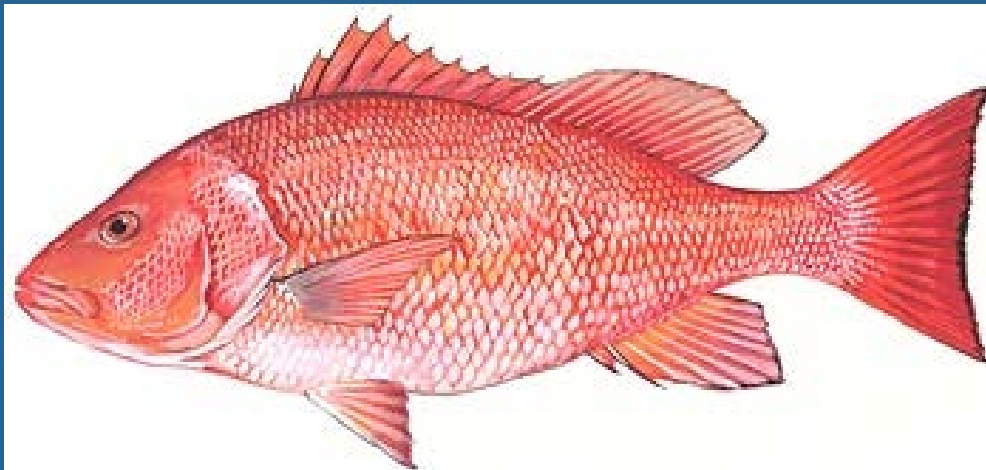
Sustainable  
Fisheries  
Branch,  
Beaufort, NC

# SEDAR 41 – South Atlantic Red Snapper Errata

SSC meeting

Charleston, SC

April, 2017

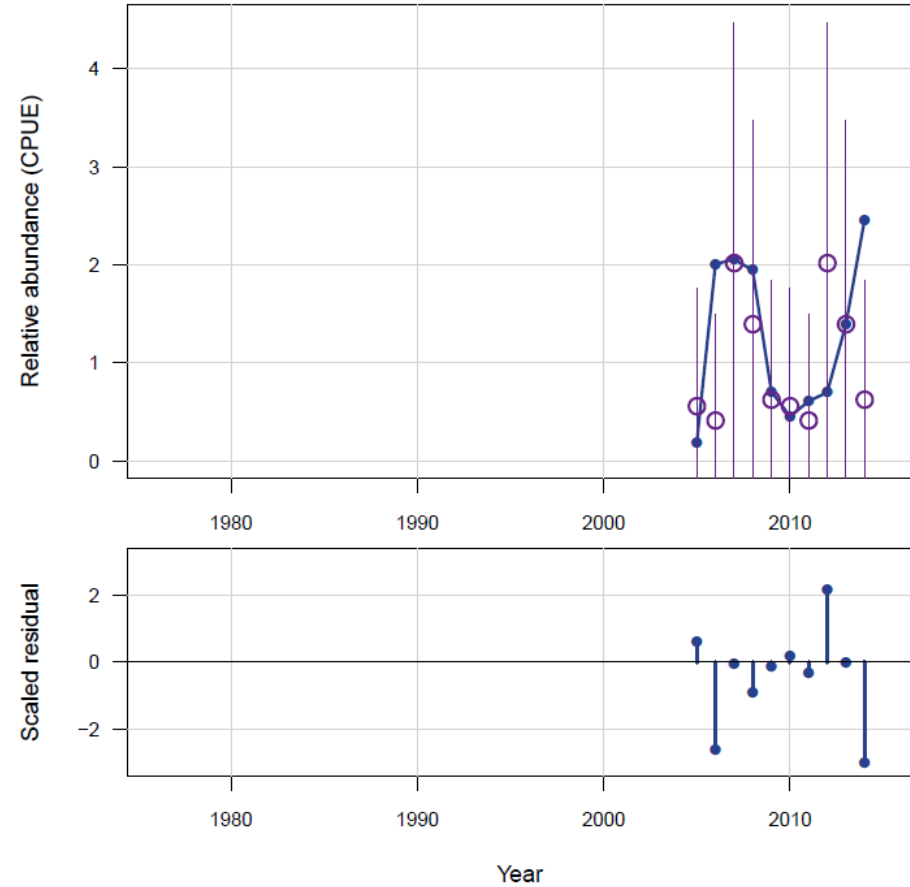
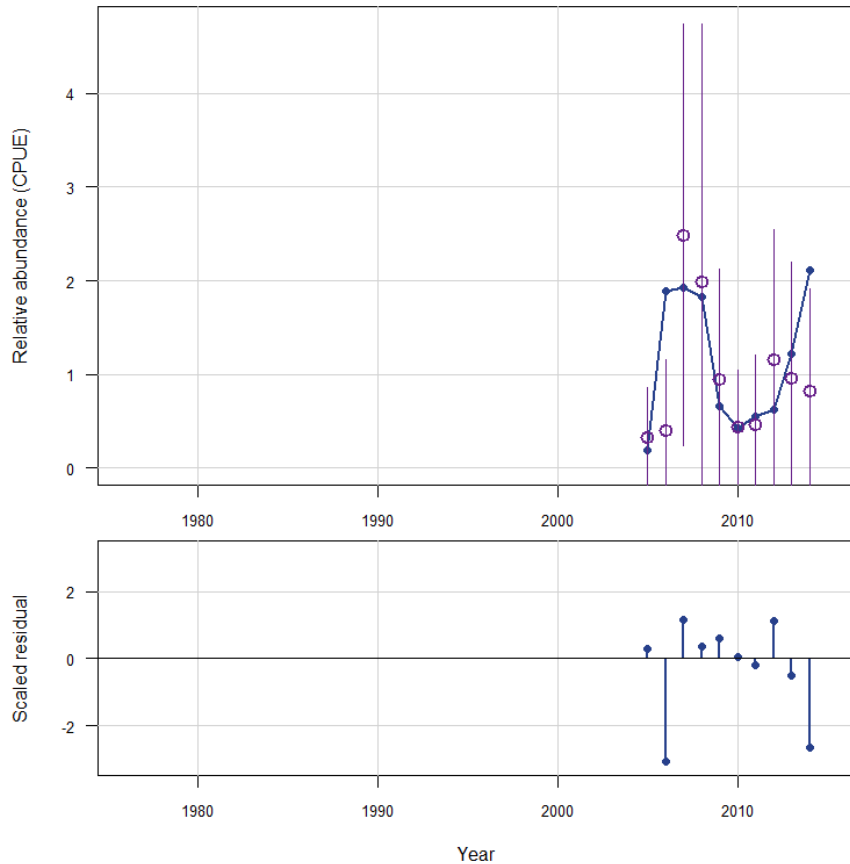


# Background

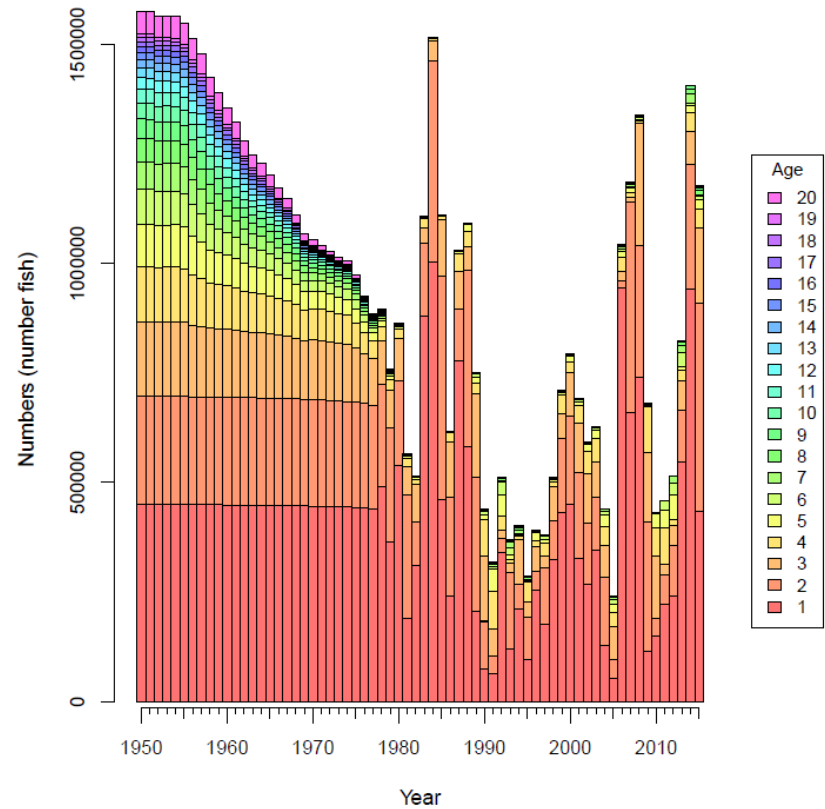
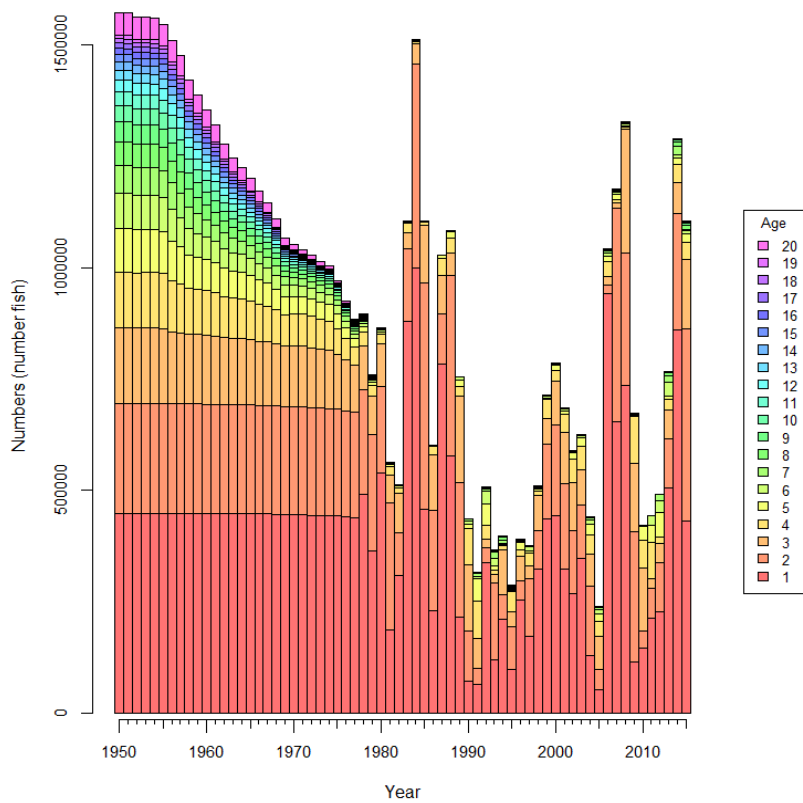
- The SEFSC discovered an error in the Red Snapper Assessment in the Headboat Discard Index input to the model.
- The input data were corrected and the model, iterative reweighting and uncertainty analysis were rerun.
- The difference between the original base run and corrected base run is negligible.

Throughout, corrected run is on the left, and old run is on the right.

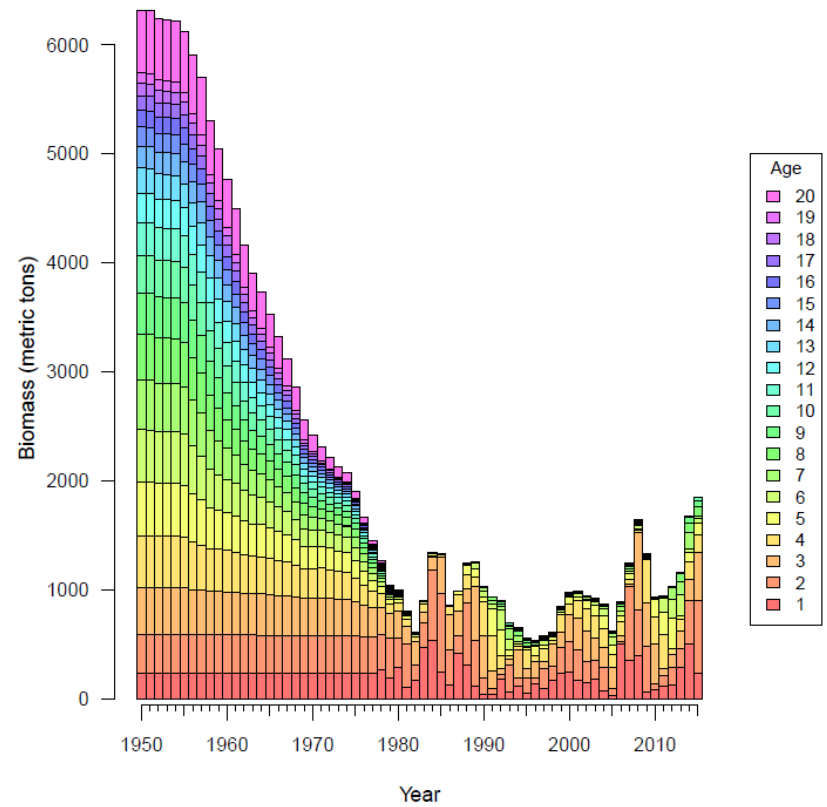
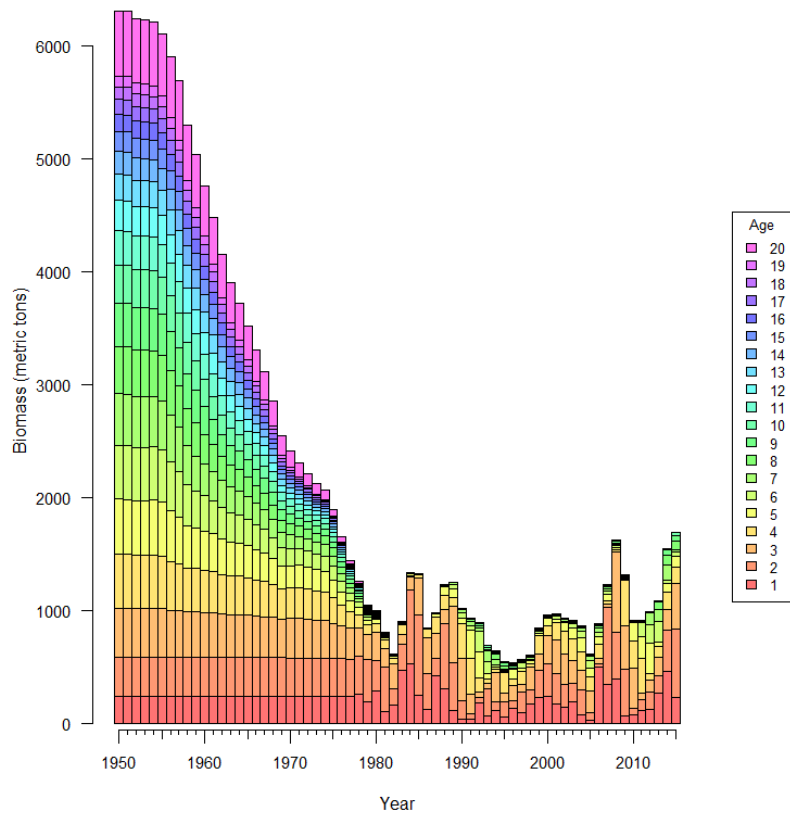
# Indices – Headboat and headboat discard



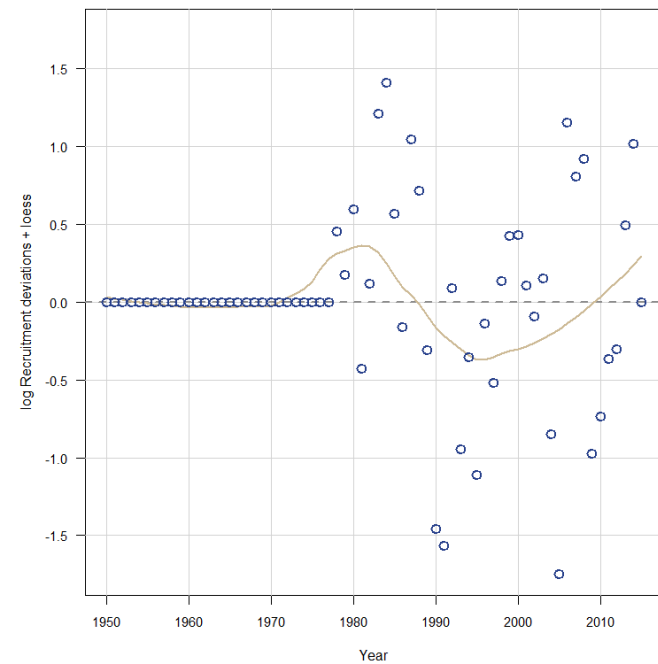
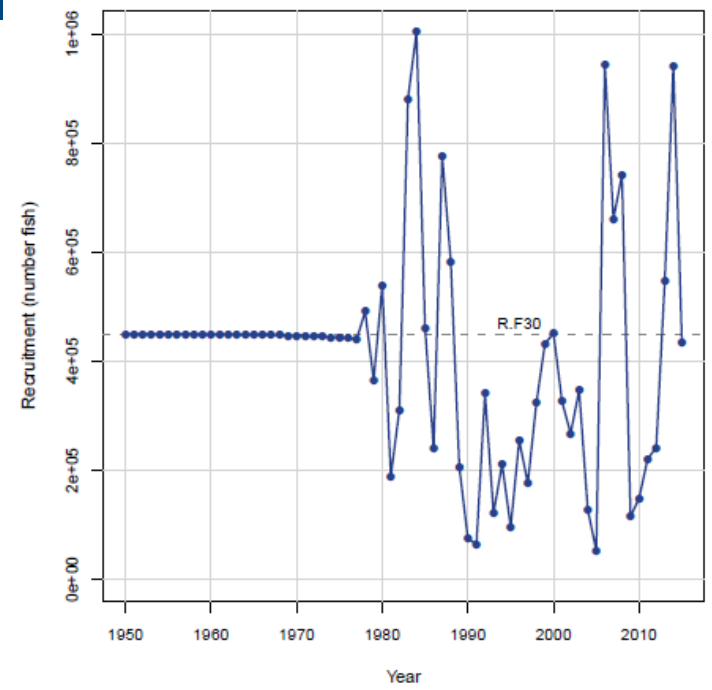
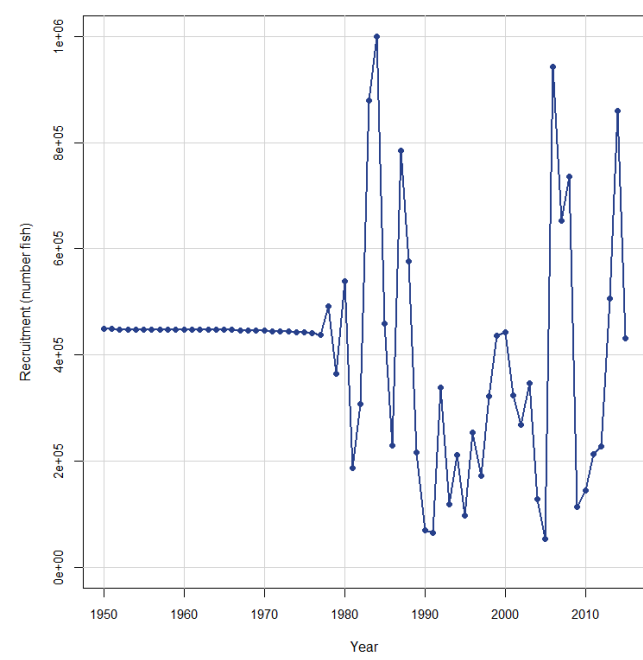
# Numbers at age



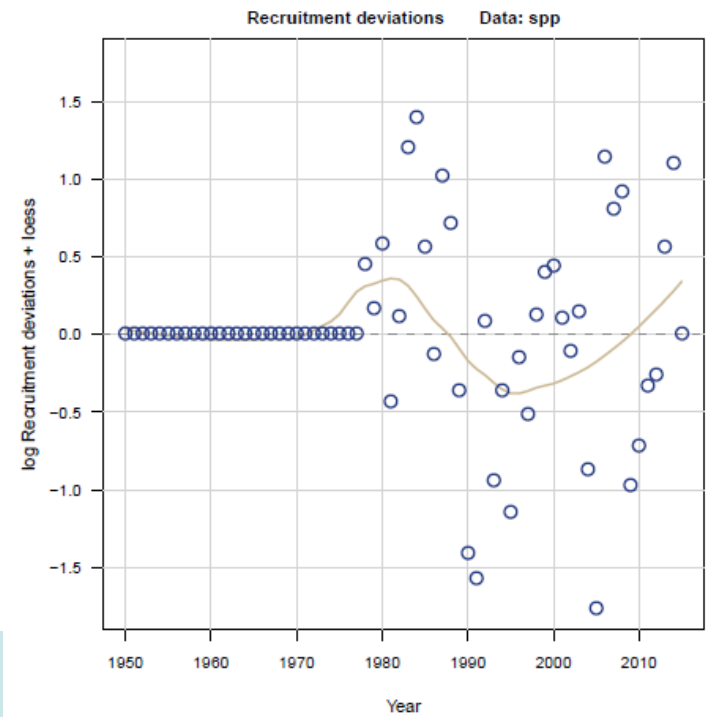
# Biomass at age



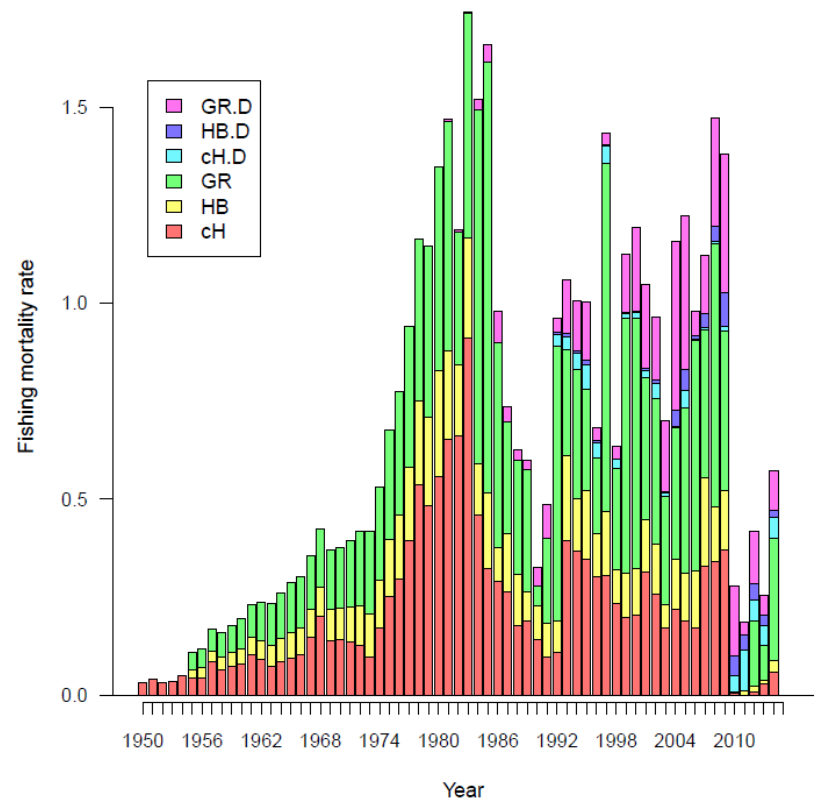
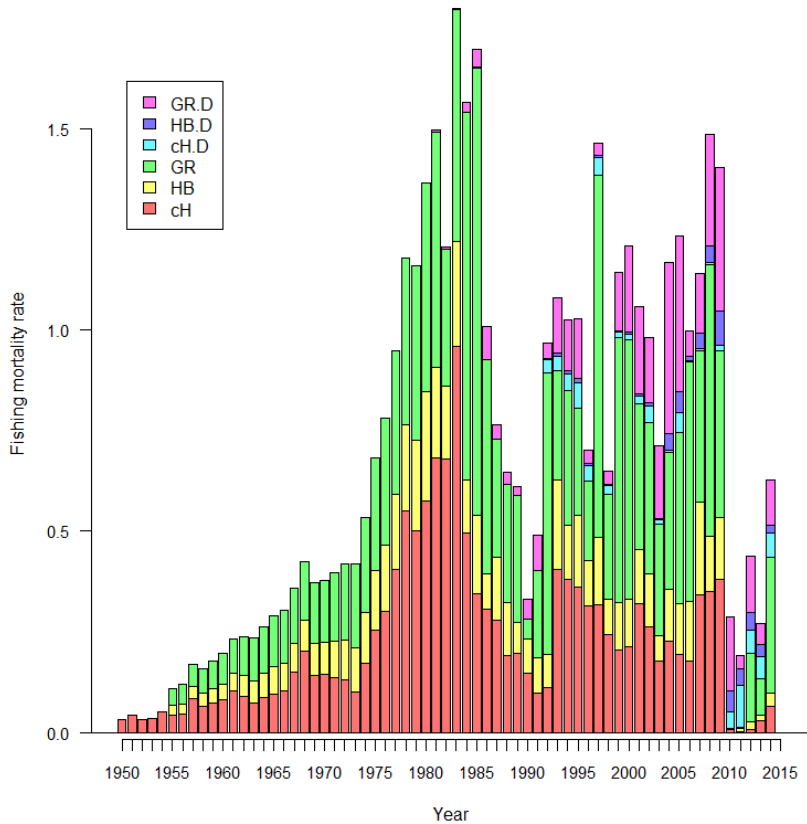
# Recruitment



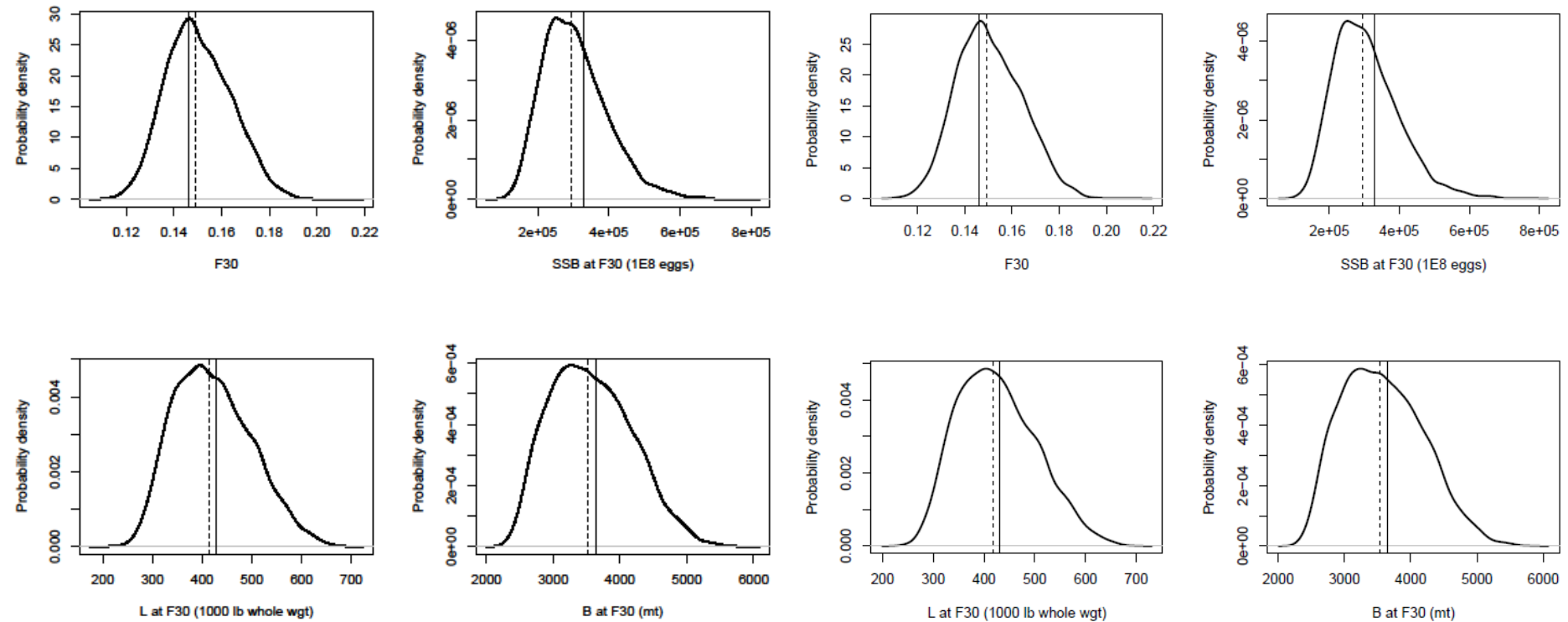
# log recruitment residuals



# Fishing mortality by fleet

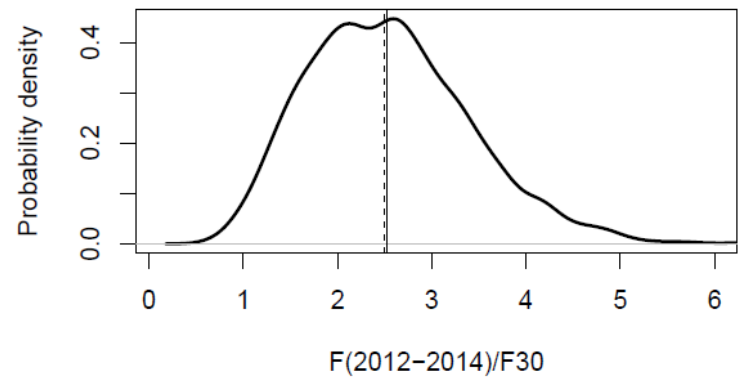
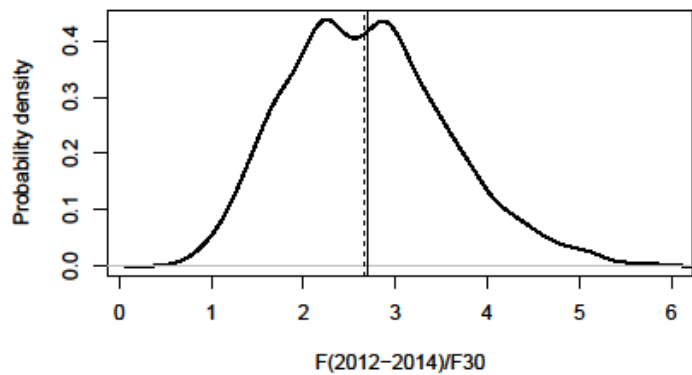
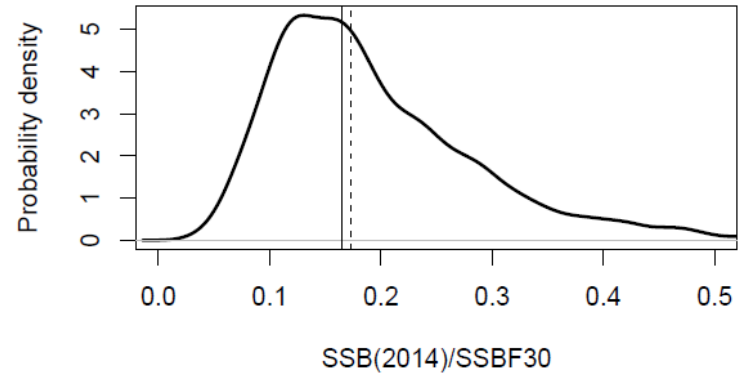
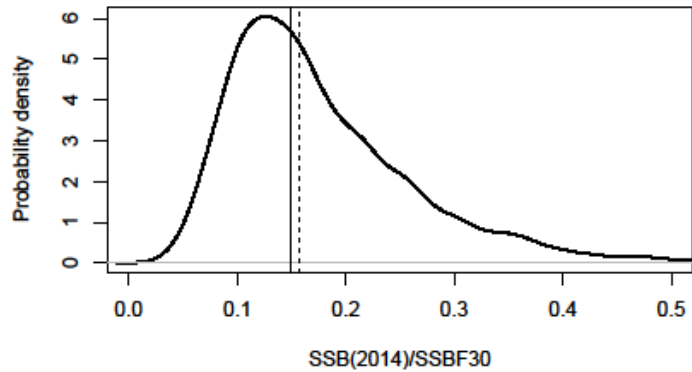


# Benchmarks (solid line is from the base, dashed is MCB median)

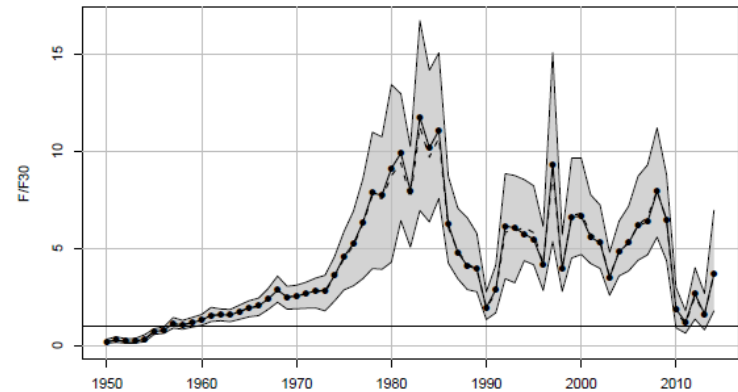
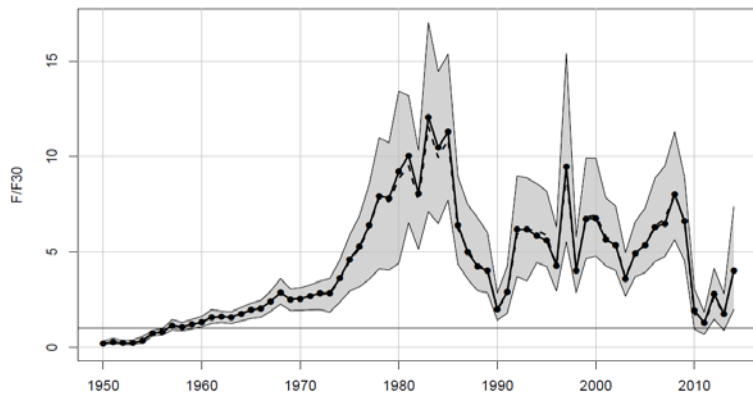
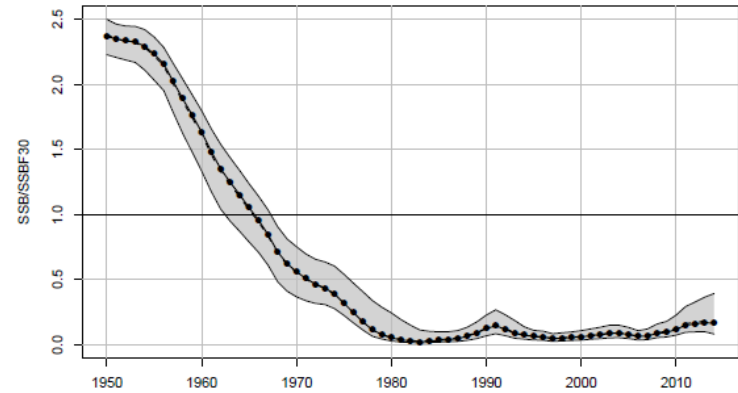
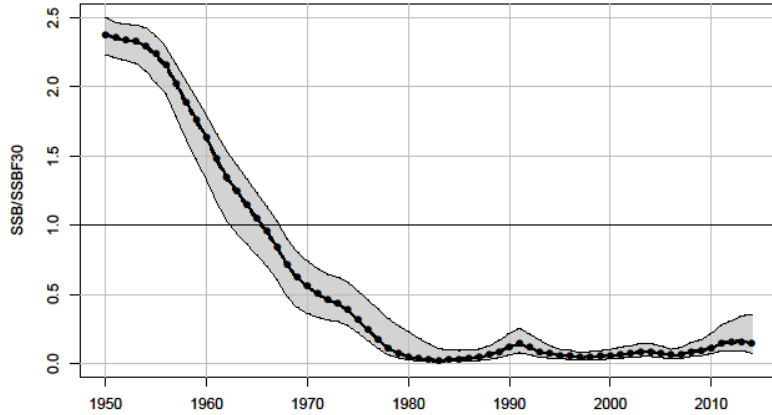




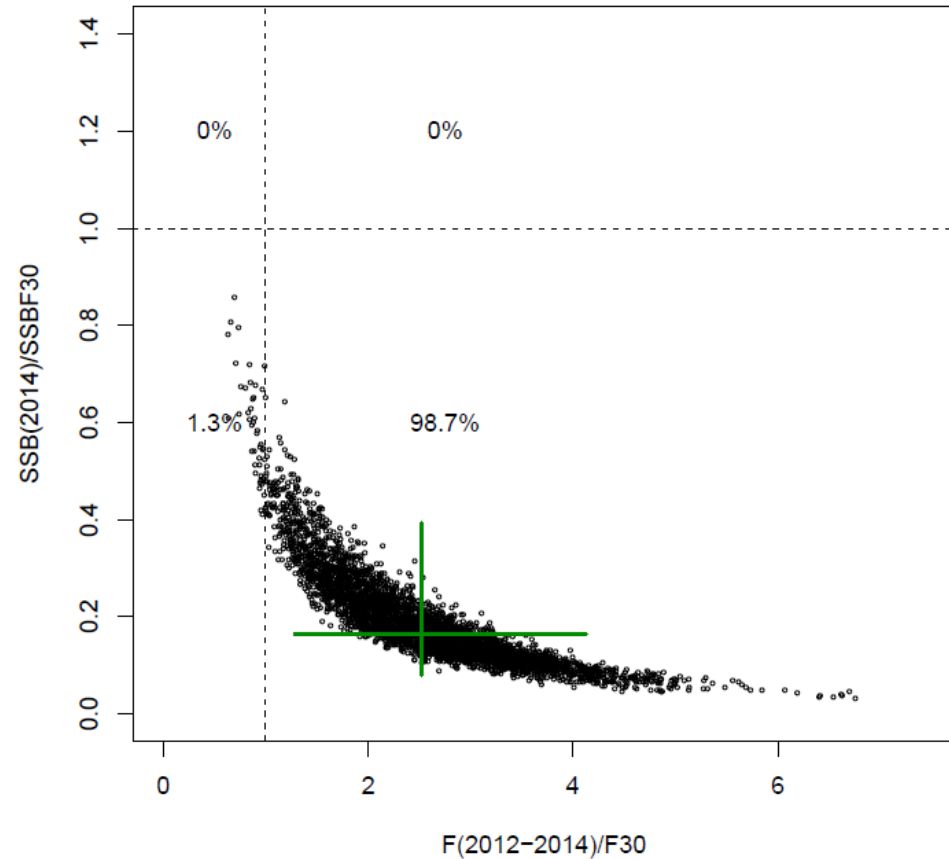
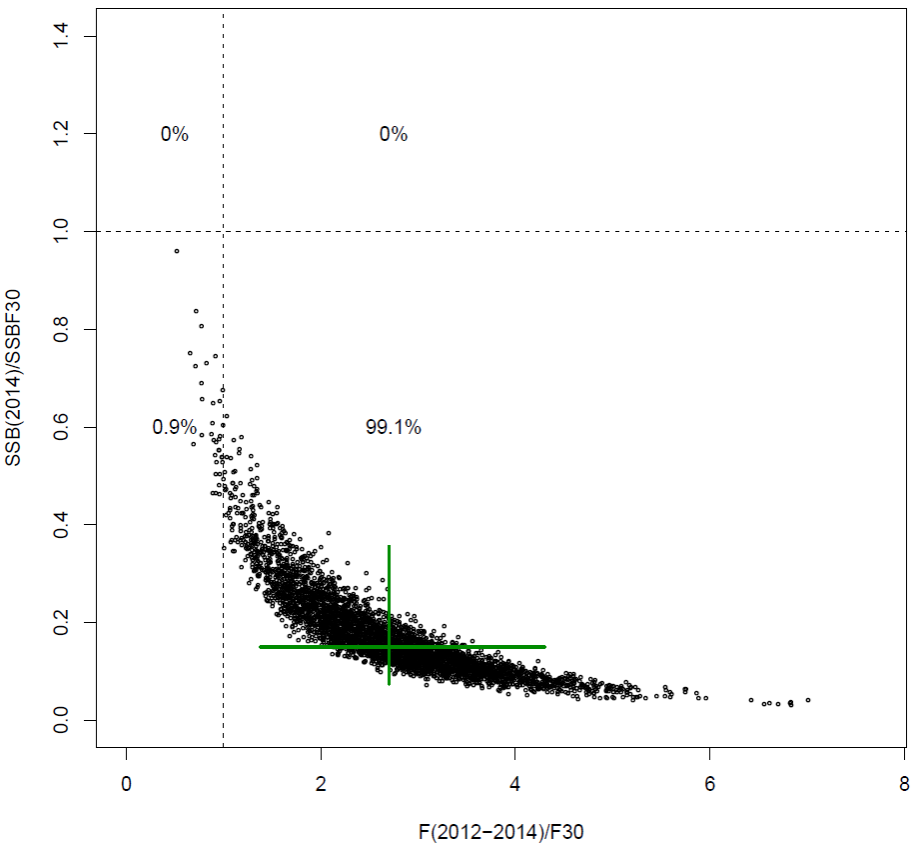
# Status



# Uncertainty in status

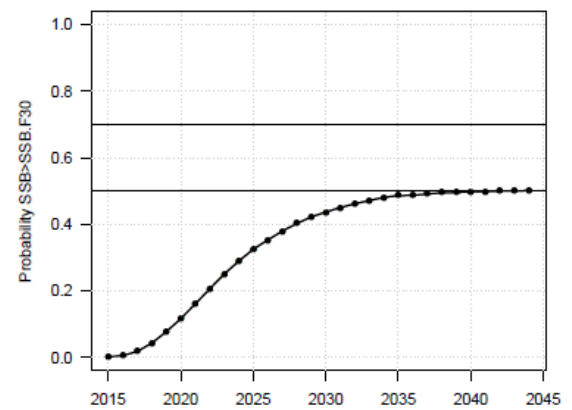
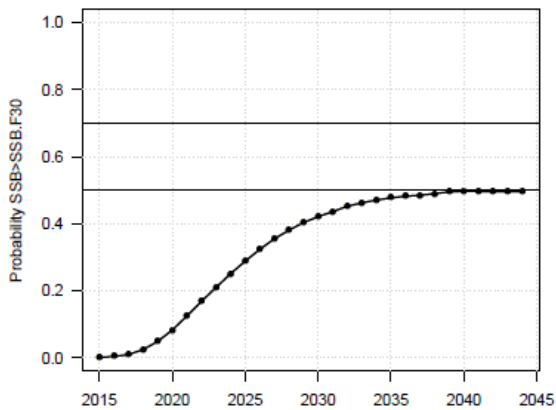
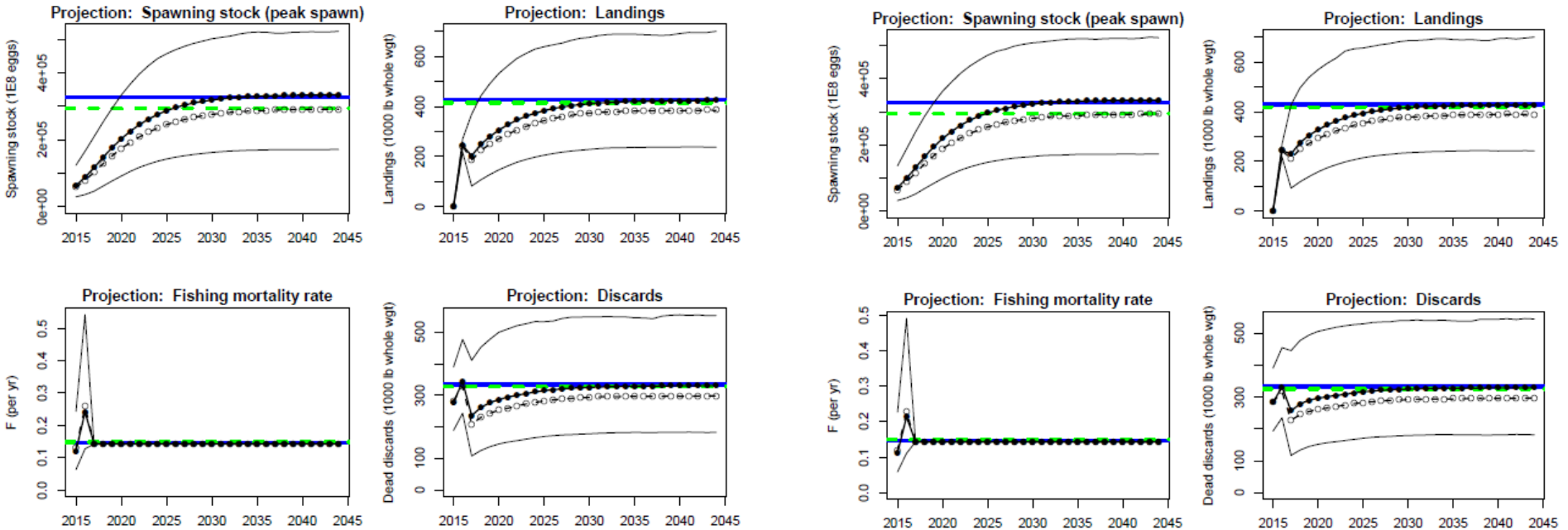


# MCB – Phase plot



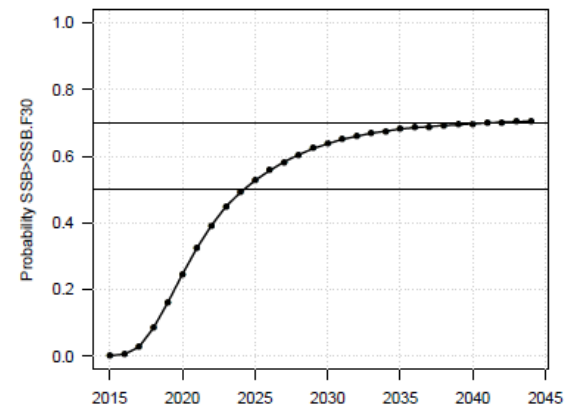
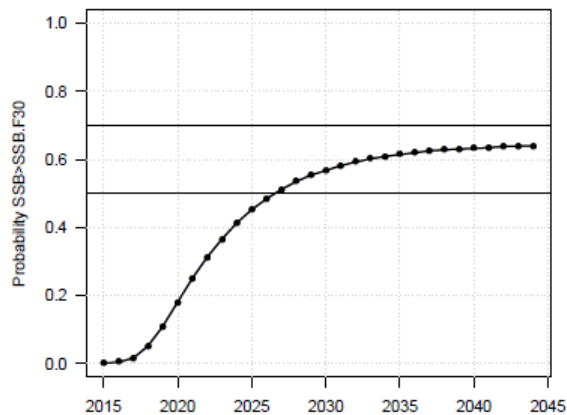
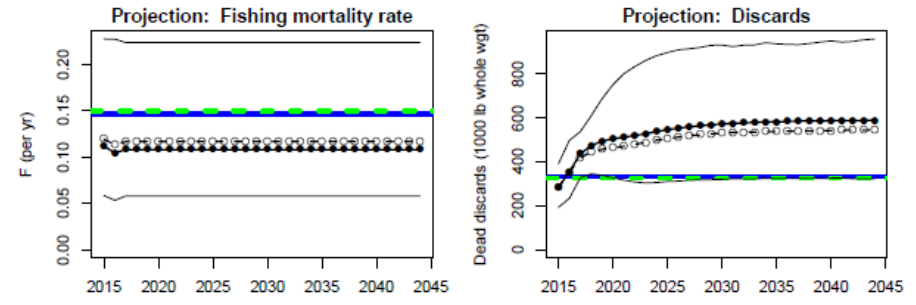
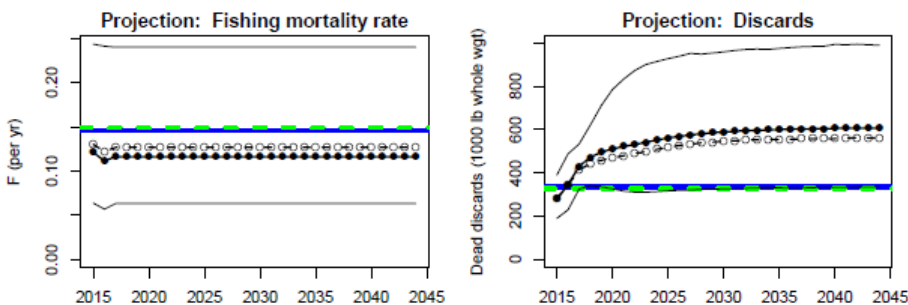
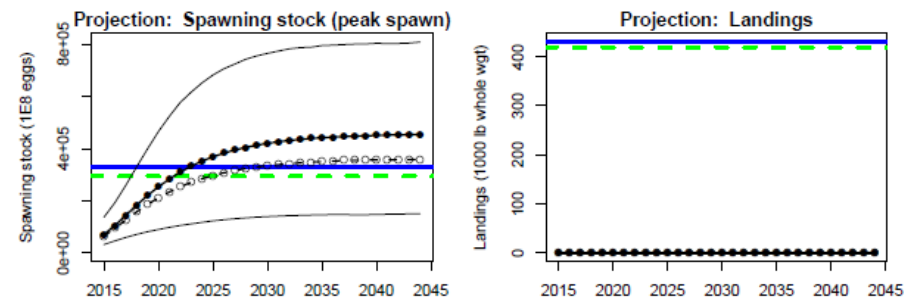
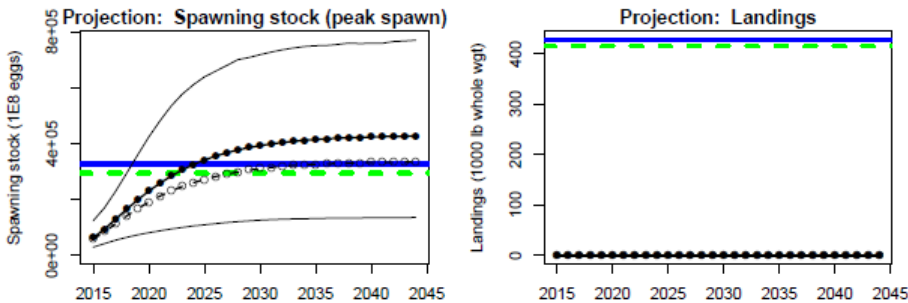
# F rebuild

No difference in rebuilding F until the thousands place, which is negligible for management.



# Discards only

Stock is rebuilt with 50% probability by 2025 (old run) and 2027 (corrected run).



# Questions?