

Science, Service, Stewardship

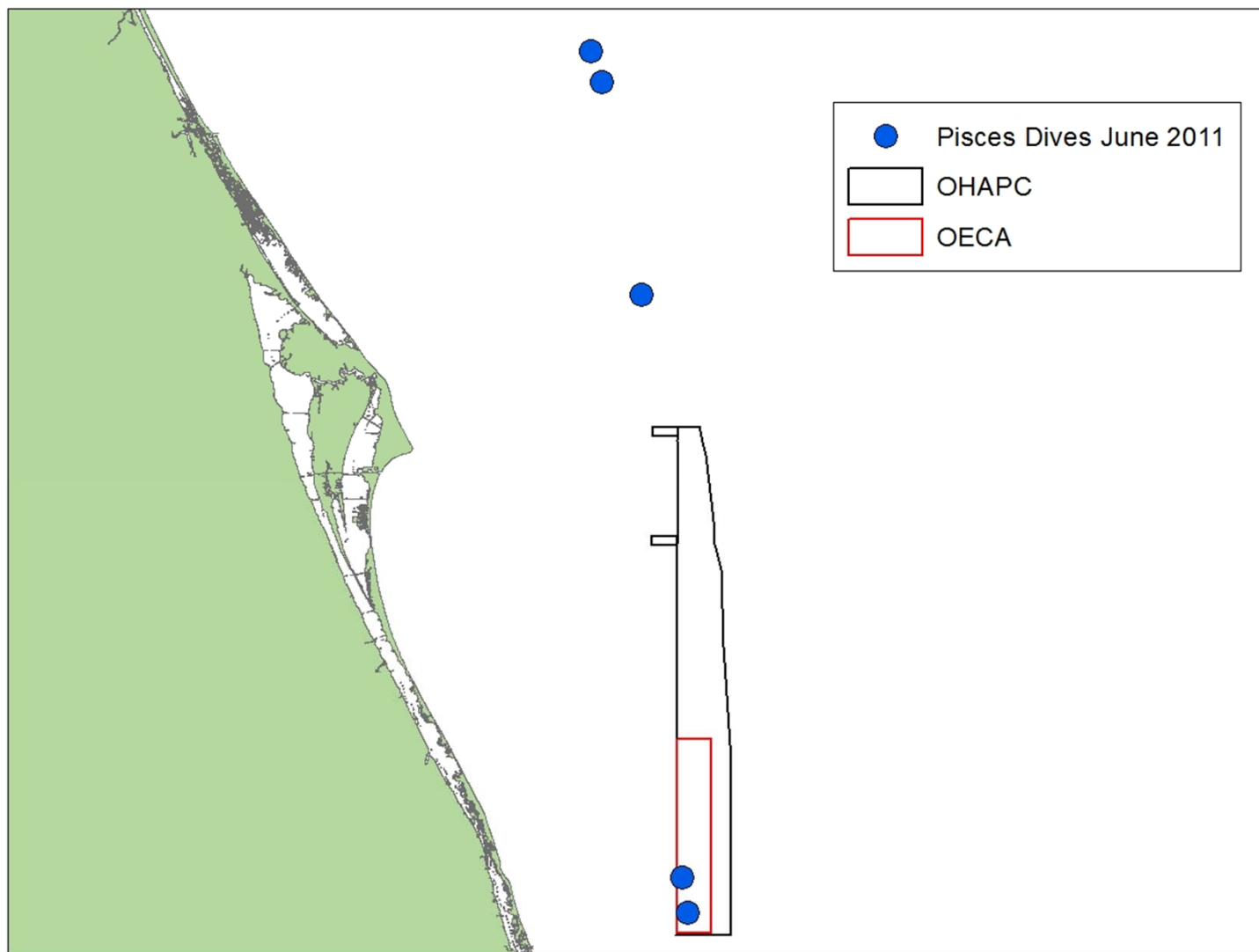


Oculina Research Update

Stacey Harter, Andrew David, John Reed

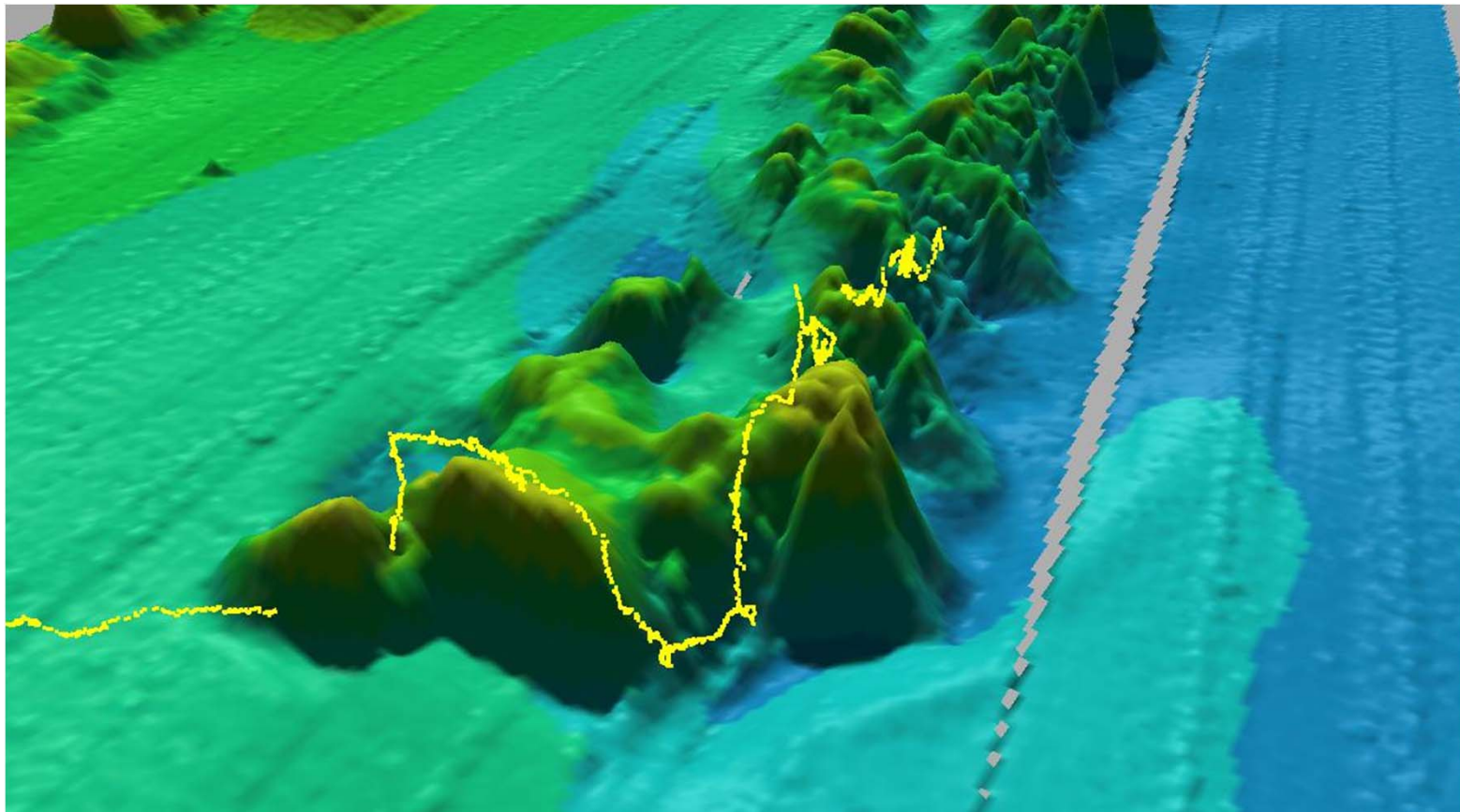
**NOAA
FISHERIES
SERVICE**

NOAA FISHERIES SERVICE



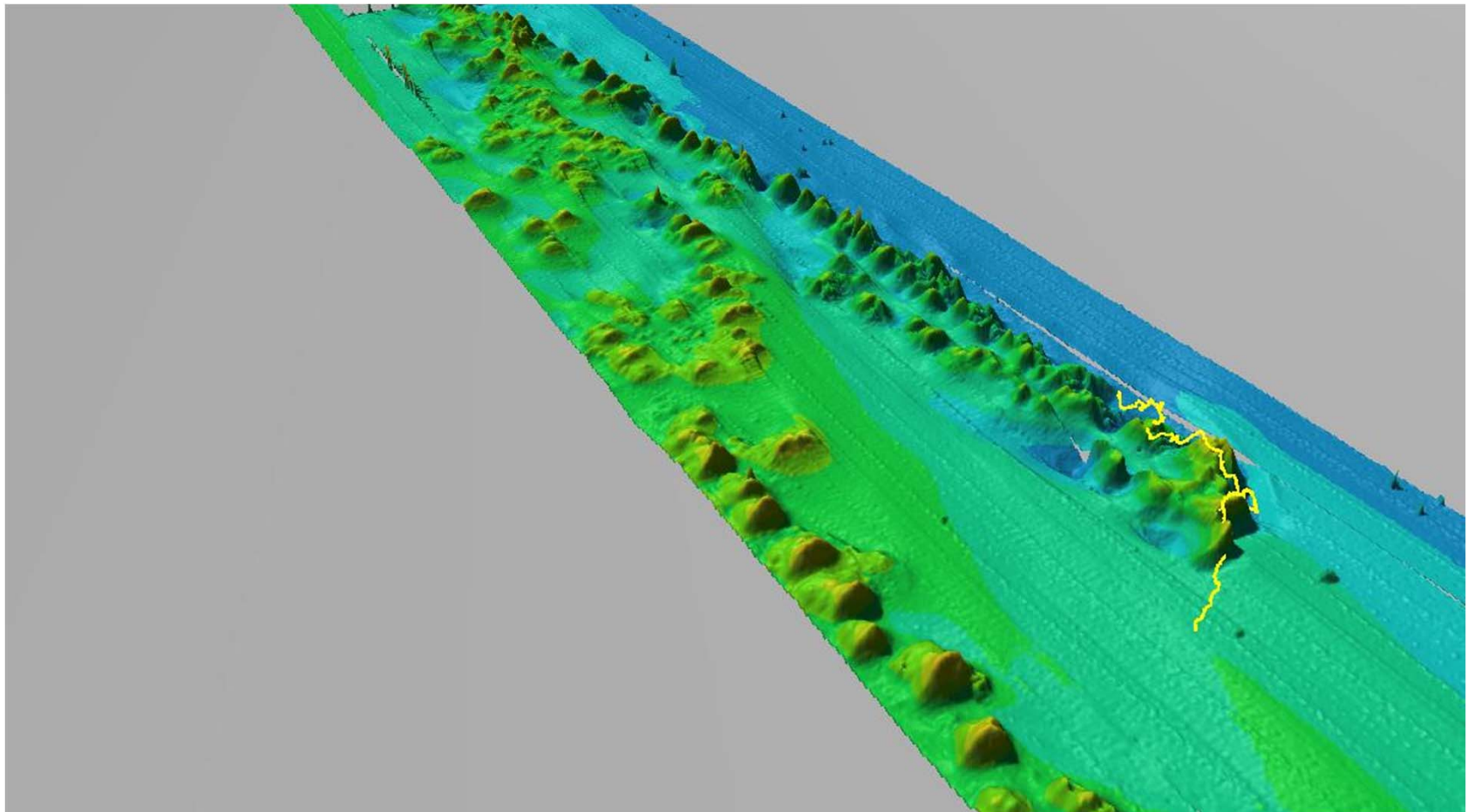


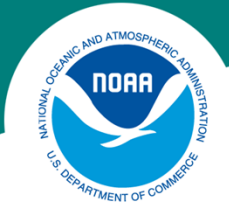
Daytona ROV Dive Track





Daytona Pinnacles





Oculina Density

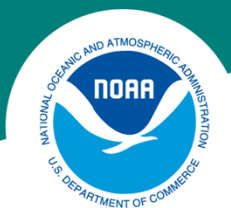
Dive Site	Live <i>Oculina</i> Density (#/m²)	Standing Dead <i>Oculina</i> Density (#/m²)	Est. Total # Live <i>Oculina</i> Colonies
Daytona North	0.09-0.29 (0.14)	0.34-0.89 (0.72)	217.8
Daytona South	0.09-0.47 (0.25)	0.74-2.32 (1.83)	107.0
Titusville	0.04-0.21 (0.14)	0.55-2.65 (0.68)	114.1
Chapman's Reef	7.32-4.23 (6.12)	1.00-1.45 (1.18)	Abundant
Jeff's Reef	4.12-4.19 (4.13)	1.09-1.98 (1.22)	Abundant

**NOAA
FISHERIES
SERVICE**



Images from sites
north of HAPC

**NOAA
FISHERIES
SERVICE**



Images from OECA sites





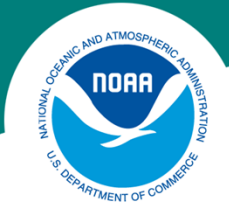
Summary of Fish from Sites North of the HAPC

Common Name	Count	Dive Distance (km)	Density (#/km)
Sea Bass - <i>Centropristis</i> sp.	2851	7.609	374.7
Black Sea Bass	631	7.609	82.9
Anthiids	354	7.609	46.5
Bank Sea Bass	318	7.609	41.8
Amberjack	23	7.609	3.0
Red Porgy	22	7.609	2.9
Scamp	19	7.609	2.5
Snowy Grouper	14	7.609	1.8

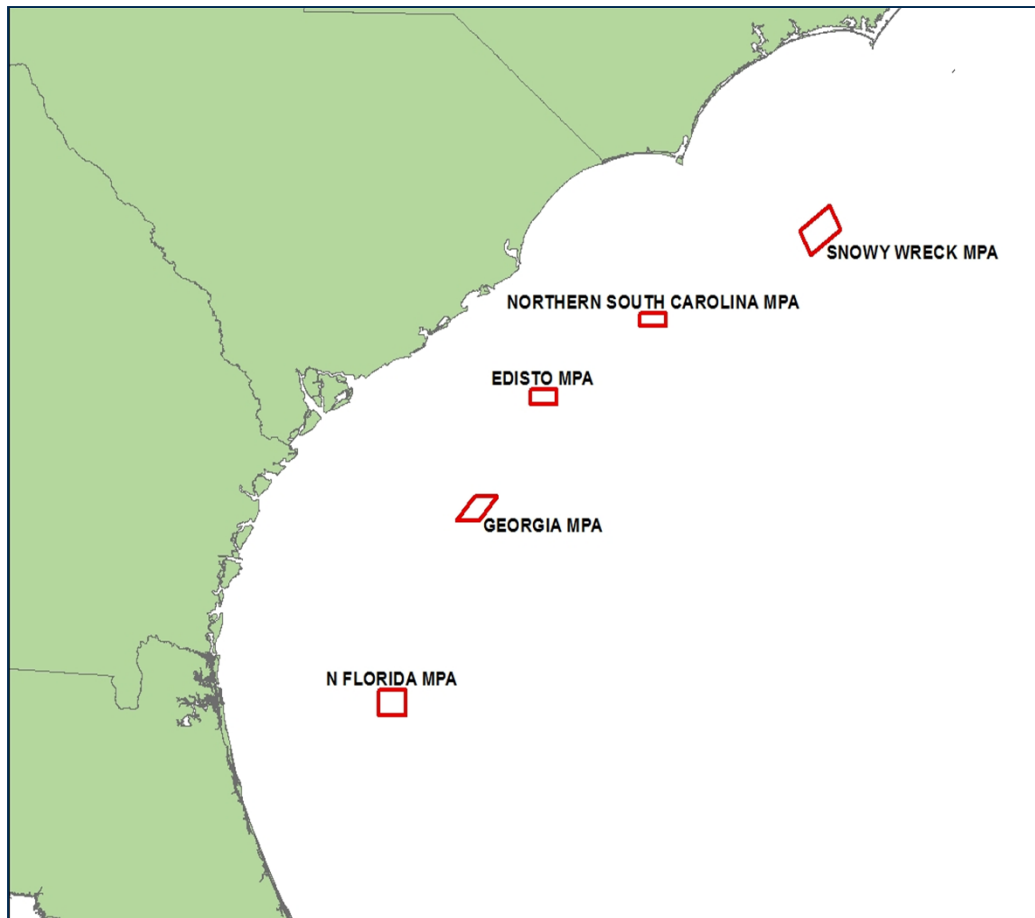


Summary of Fish from OECA Sites

Common Name	Count	Dive Distance (km)	Density (#/km)
Anthiids	6420	3.659	1754.6
Sea Bass - <i>Centropristis</i> sp.	124	3.659	33.9
Bank Sea Bass	54	3.659	14.8
Scamp	25	3.659	6.8
Black Sea Bass	23	3.659	6.3
Amberjack	6	3.659	1.6
Tilefish - <i>Caulolatilus</i> sp.	2	3.659	0.5
Snowy Grouper	2	3.659	0.5
Gag Grouper	1	3.659	0.3
Vermilion Snapper	1	3.659	0.3



South Atlantic MPA Survey

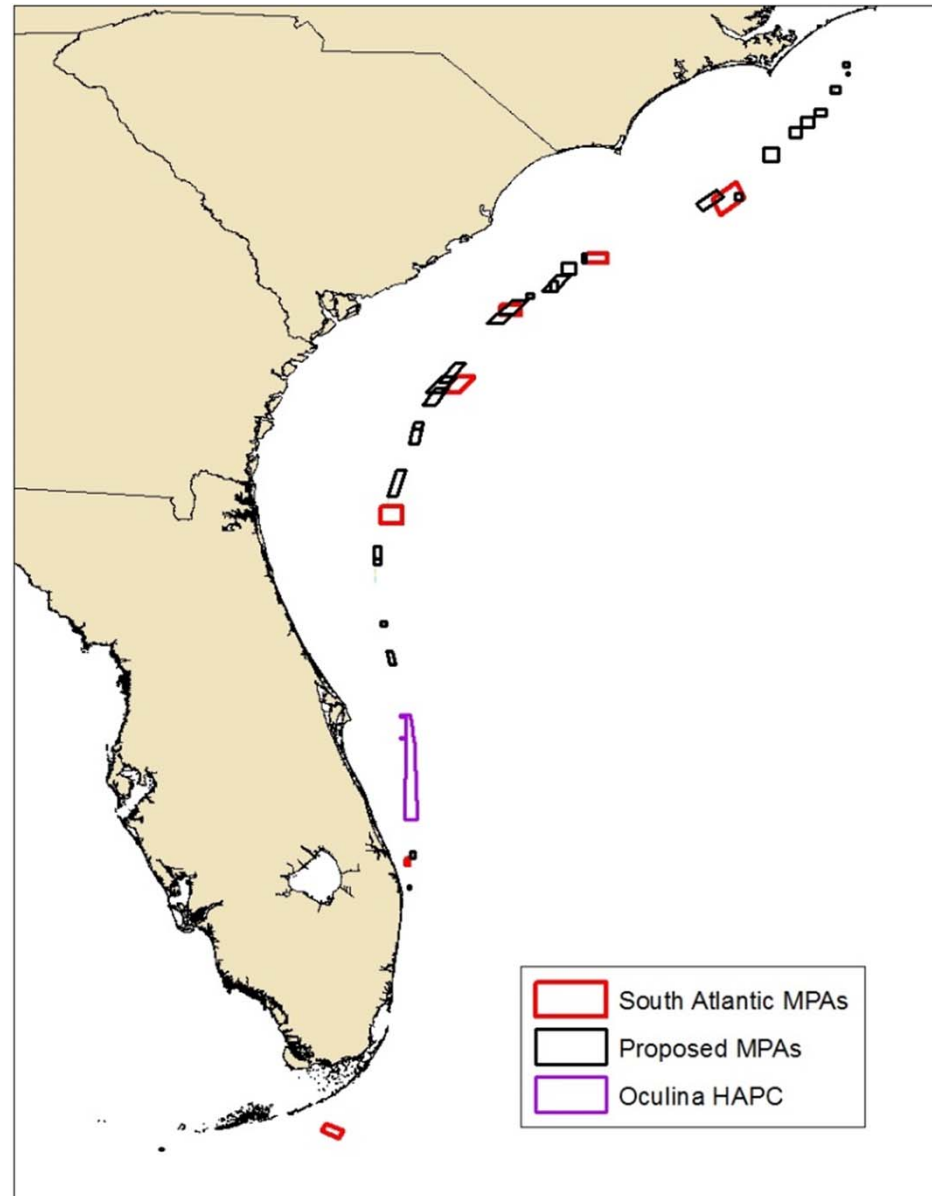


- SAFMC Amendment 14, 8 MPAs established, we are focusing on 5 of them
- Surveyed 2004 – 2013, MPAs established in 2009
- Collected 4 years of pre-closure & 4 years of post-closure data so far
- ROV Survey
- Survey sites inside and outside each MPA.



SAFMC Amendment 17 Regulations for Speckled Hind & Warsaw Grouper

- SAFMC MPA Expert Working Group met and decided on possible locations for reconfiguration of existing MPAs or additional MPAs to protect speckled hind & warsaw grouper.
- Because of this amendment, we expanded our survey in 2013 both north and south of the existing MPAs to include some of the proposed MPAs.
- We have submitted a grant to extend this survey for 3 more years. If funded, we will expand our survey even further to the south to include the OECA at the request of the Council.





Oculina Survey 2015-2017

Objectives:

1. Complete multibeam mapping of the OECA
2. Conduct ROV dives inside the OECA to complete a species and habitat characterization of the area

