



Wilmington East Leasing Overview

November 3, 2021

Casey Reeves, Project Coordinator

Brian Hooker, Lead Biologist

Office Of Renewable Energy Programs

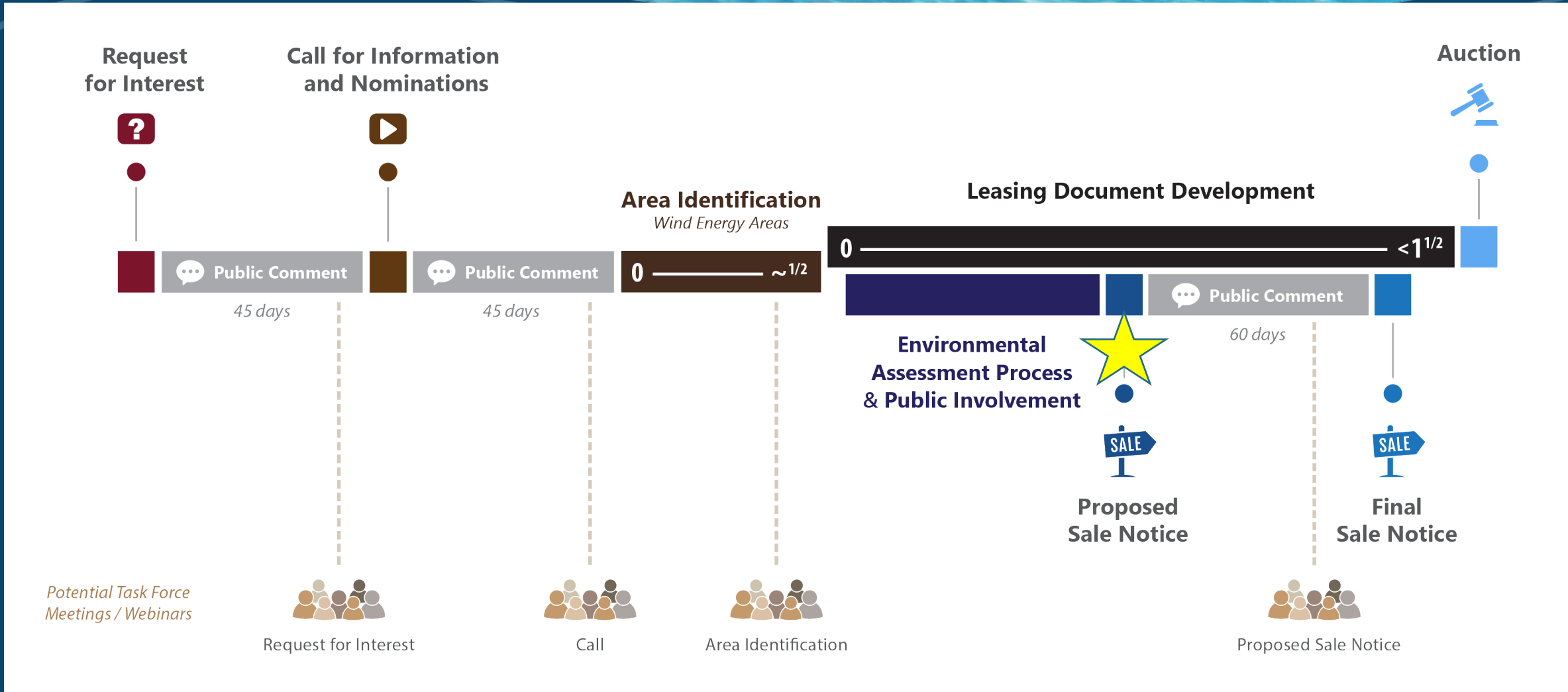


Agenda

- BOEM Leasing Process
- Leasing Strategy
- PSN
 - Areas in the PSN
 - Environmental Considerations
 - Auction Elements



Renewable Energy Leasing Process



Call for Information and Nominations

- Areas for special consideration and analysis
- Conditions in the Call Area
- Areas to be considered for leasing

Call Area

Wind Energy Area

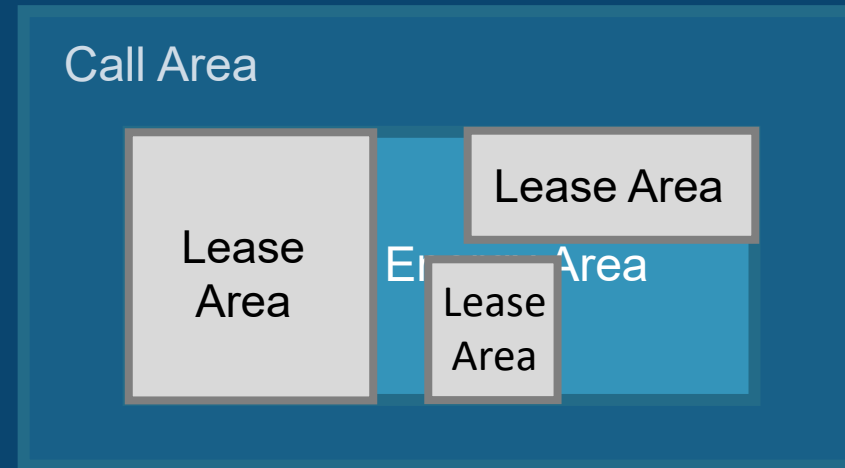
- A portion of the Outer Continental Shelf (OCS) identified by BOEM for NEPA analysis (Environmental Assessment)
- The basis for a Lease Area

Call Area

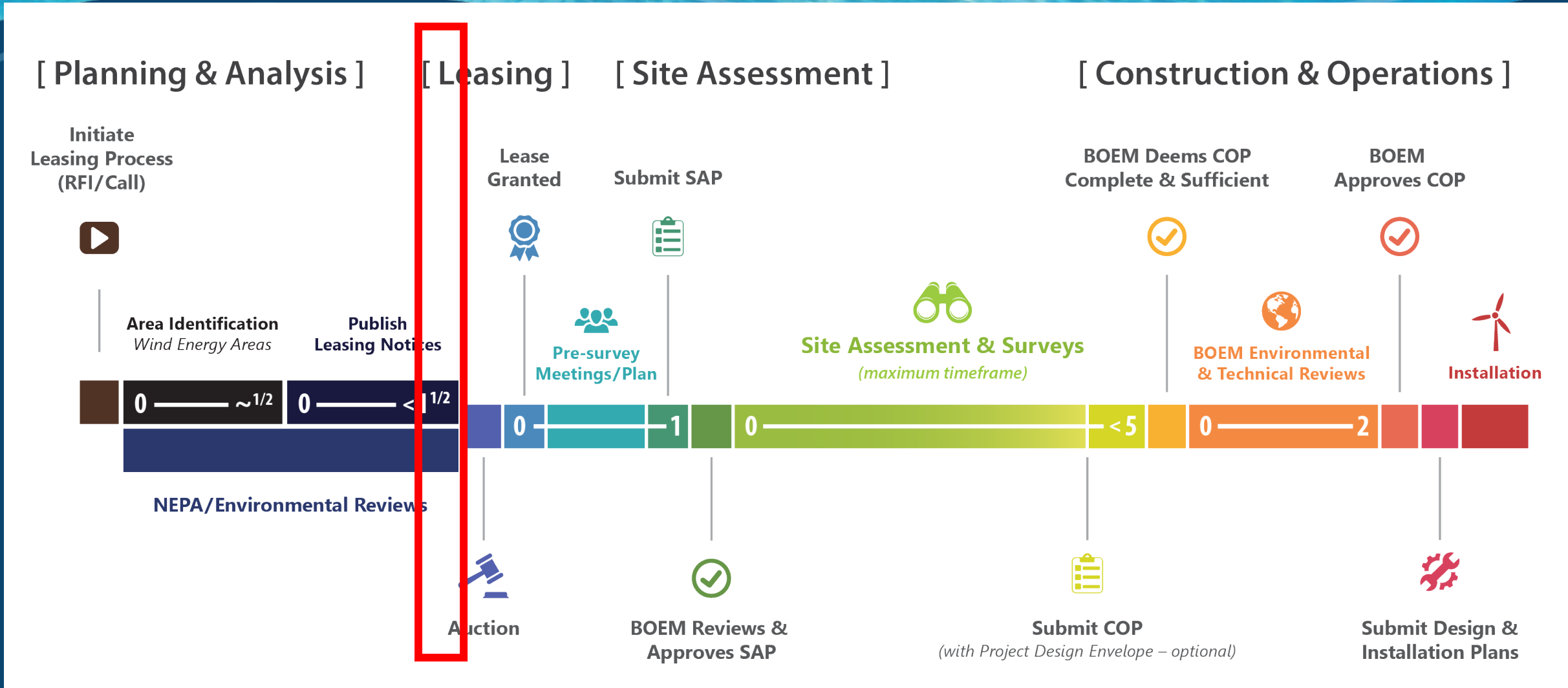
Wind Energy Area

Lease Areas

- Wind Energy Areas have the potential for further division into Lease Areas



Renewable Energy Process: From RFI/Call to Operation



Stakeholder Outreach in the Carolina Long Bay

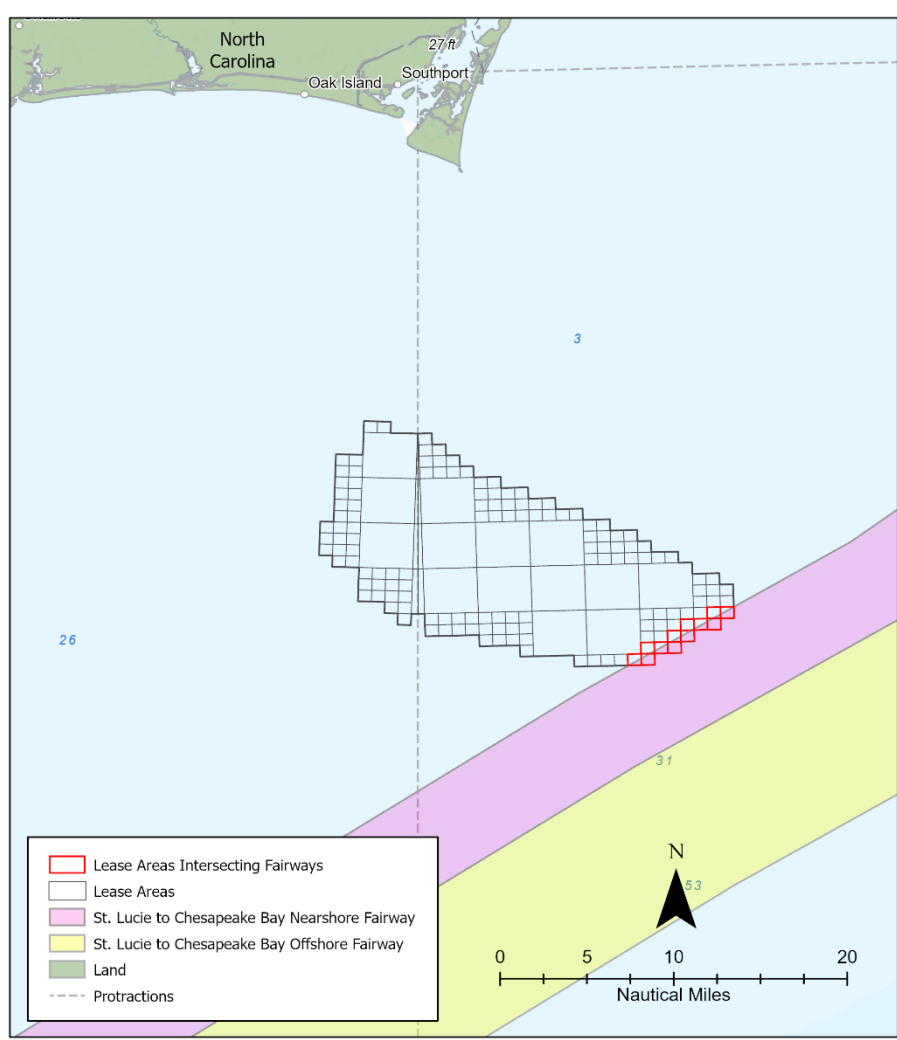
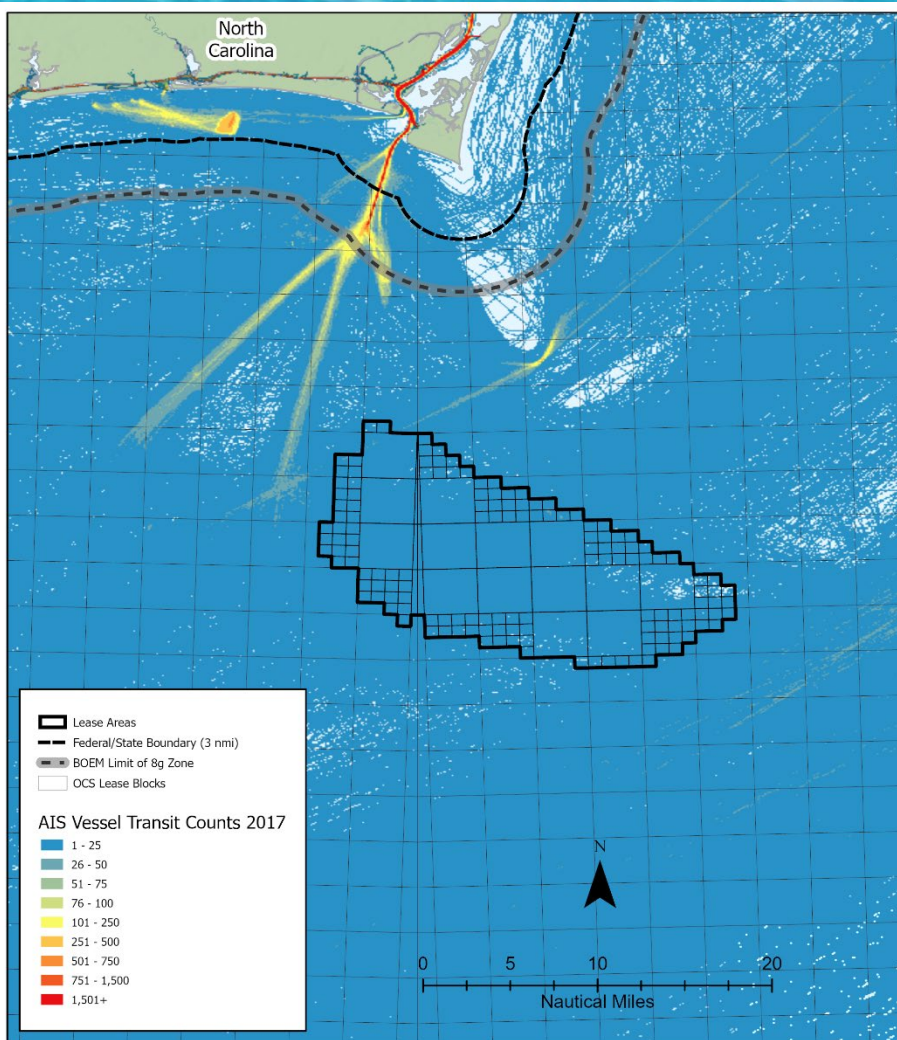
- 12 Task Force Meetings
 - 6 North Carolina
 - 5 South Carolina
 - First meeting July 2012
 - Joint meetings began in April 2016
- 3 Public Meetings
 - Informational, Public Scoping, Environmental Assessment meetings
- Engagement with Stakeholder Groups
- Last Task Force Meeting: July 21, 2021



Background Navigation

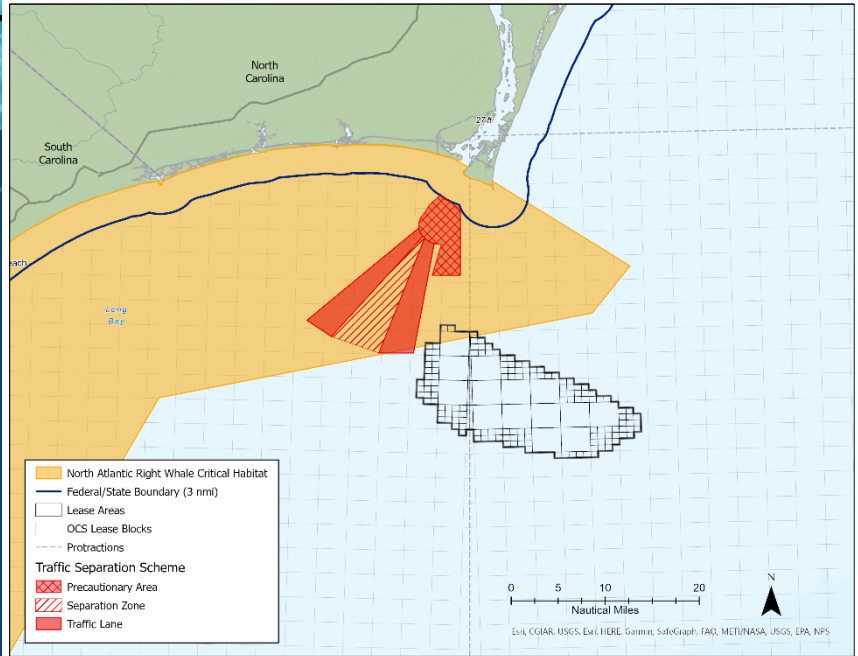
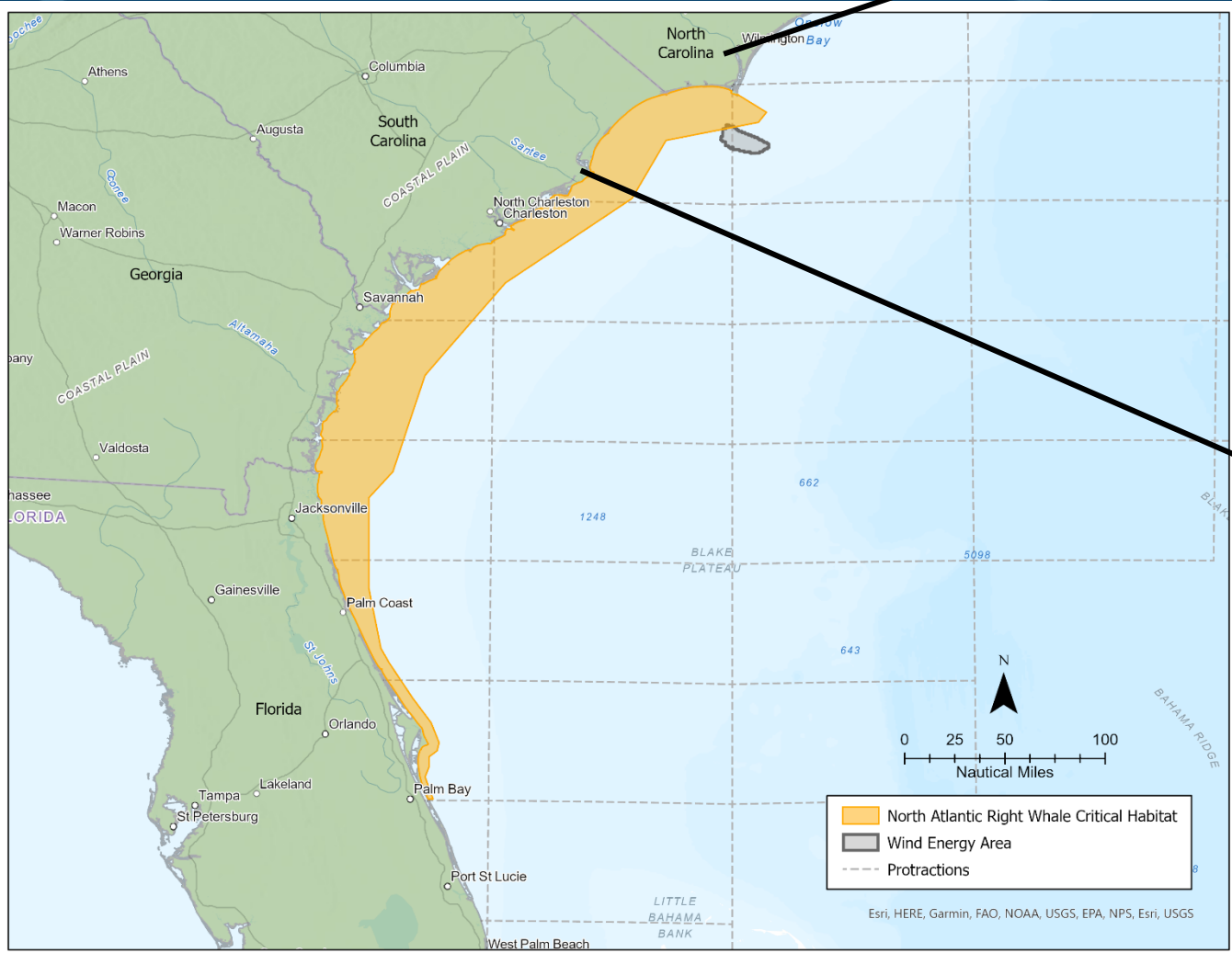


2015 Deepwater Vessels
(Cargo and Tankers)



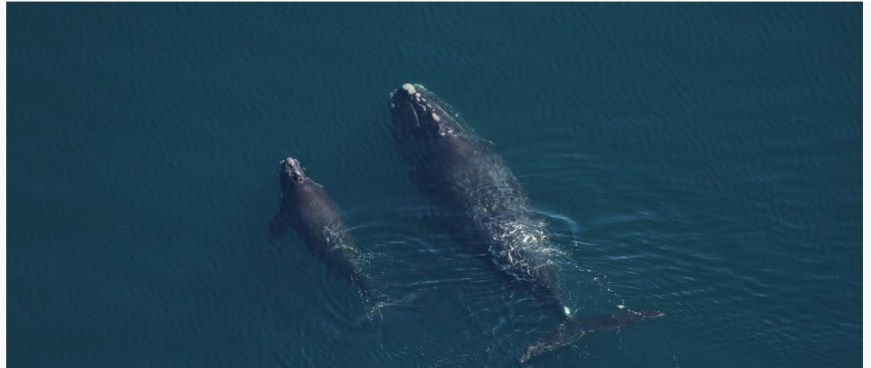
2020 Fairway (proposed)

Background NARWCH Expansion 2016



Oh, baby! New right whale calf spotted off the coast of North Carolina

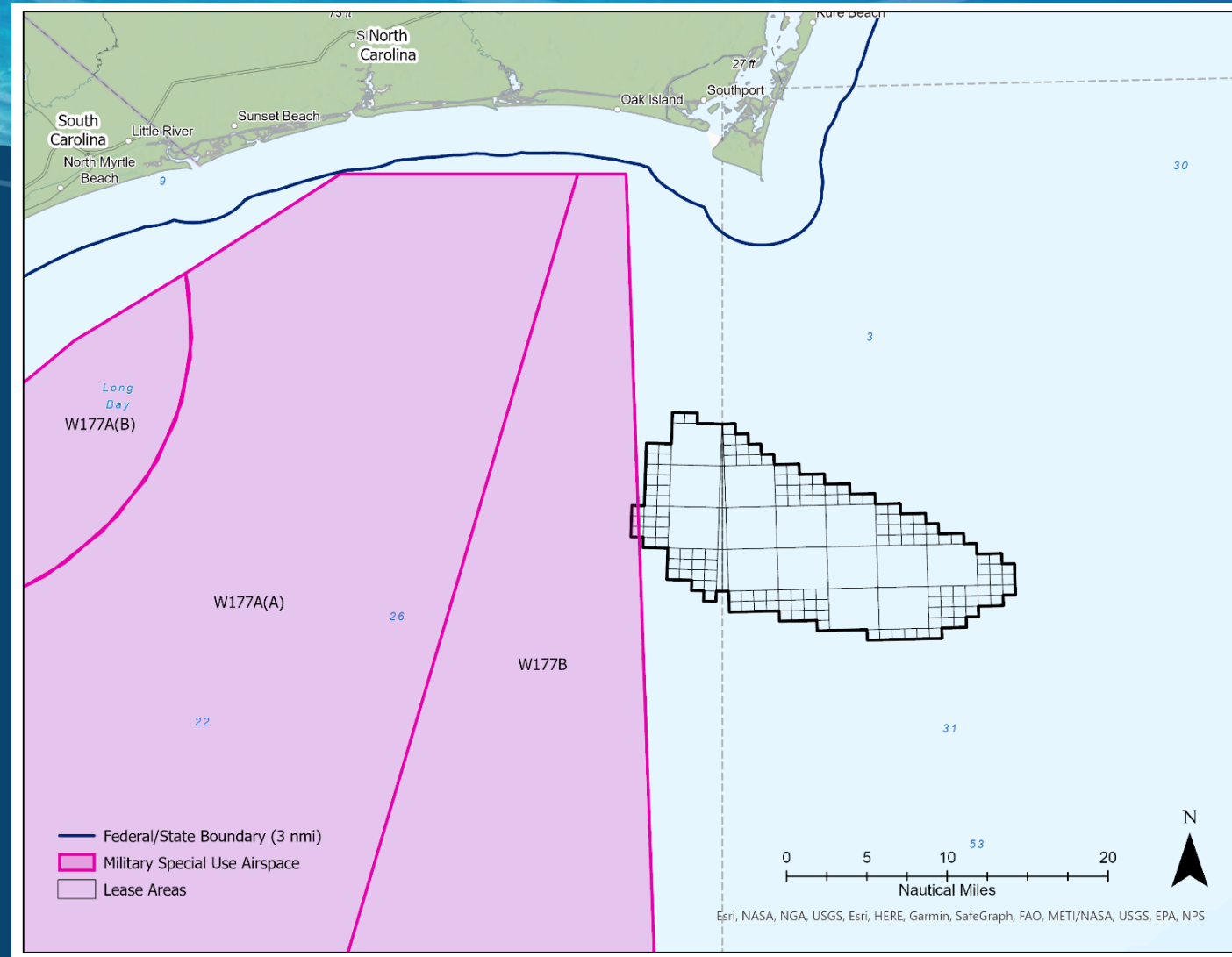
The endangered right whale calf is the 17th documented calf of the 2020-2021 calving season



- This designation impacts ~16 aliquots of the Wilmington East Lease area



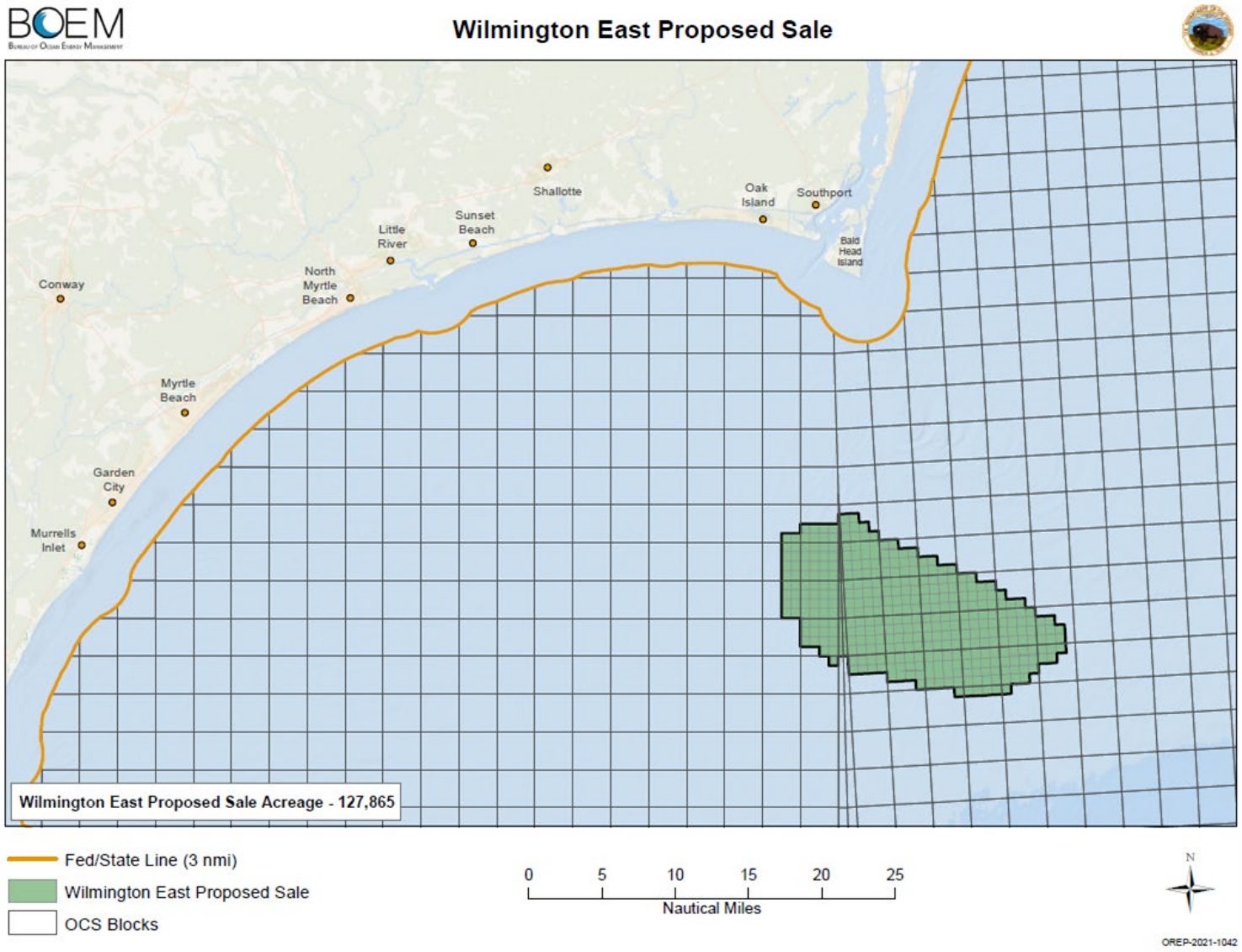
Background Military



- The 20th Fighter Wing, Shaw Air Force Base, and the 169th Fighter Wing a unit of the South Carolina Air National Guard, stationed at McEntire Joint National Guard Base, South Carolina currently conducts combat aerial combat sorties and defensive countermeasures (i.e., chaff and flares) training in overwater warning areas W177A/B.

OREP Proposed Sale Notice Area

Planning Area Name	Acres	MW	Closest Distance to Shore (nmi)
Wilmington East	127,865	1,500	~15



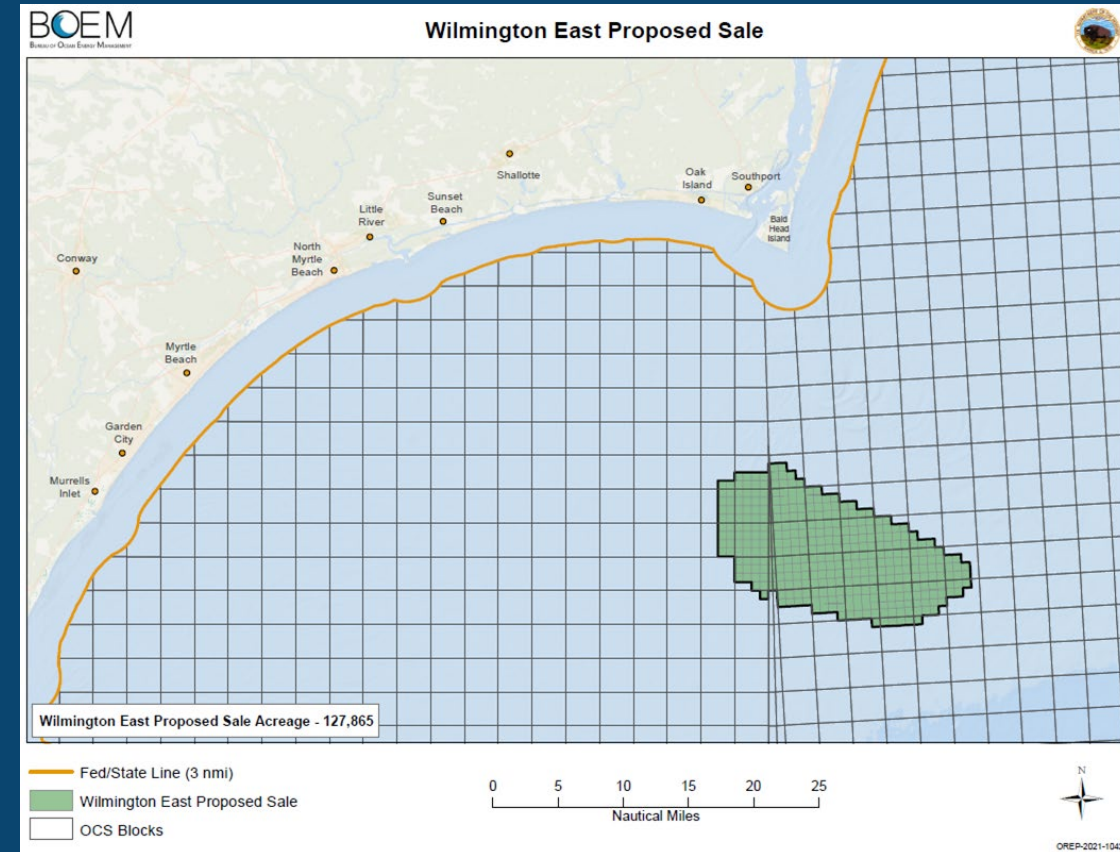
OREP Leasing Strategy/Schedule

Milestone	Action	Date	Notes
Area ID	Completed		ATLW-9 <ul style="list-style-type: none"> OCS-A 0545 (WE)
Environmental Assessment	Review underway	Updates In Process	Review EA concurrent w/ consultations and updates to lease conditions in Addendum C
Proposed Sale Notice			
	Draft PSN/RFI to Task Force	July 8, 2021	
	TF Meeting	July 21, 2021	
	Review and incorporate Comments and new information received from TF into PSN	August- October 2021	
	Publish PSN	November 1, 2021	
	60-Day Comment Period	November 1, 2021- January 3, 2022	Public auction seminar, process qualifications
Final Sale Notice	Publish FSN	NLT March 31, 2022	
	Minimum 30-Day Waiting Period (45 days recommended)	April 2022	Receive bidder financial forms, bid deposits, non-monetary packages, hold mock auction
Lease Sale	Sale Date	NLT May 15, 2022	
	Lease Execution	NLT June 30, 2022	



Proposed Sale Notice

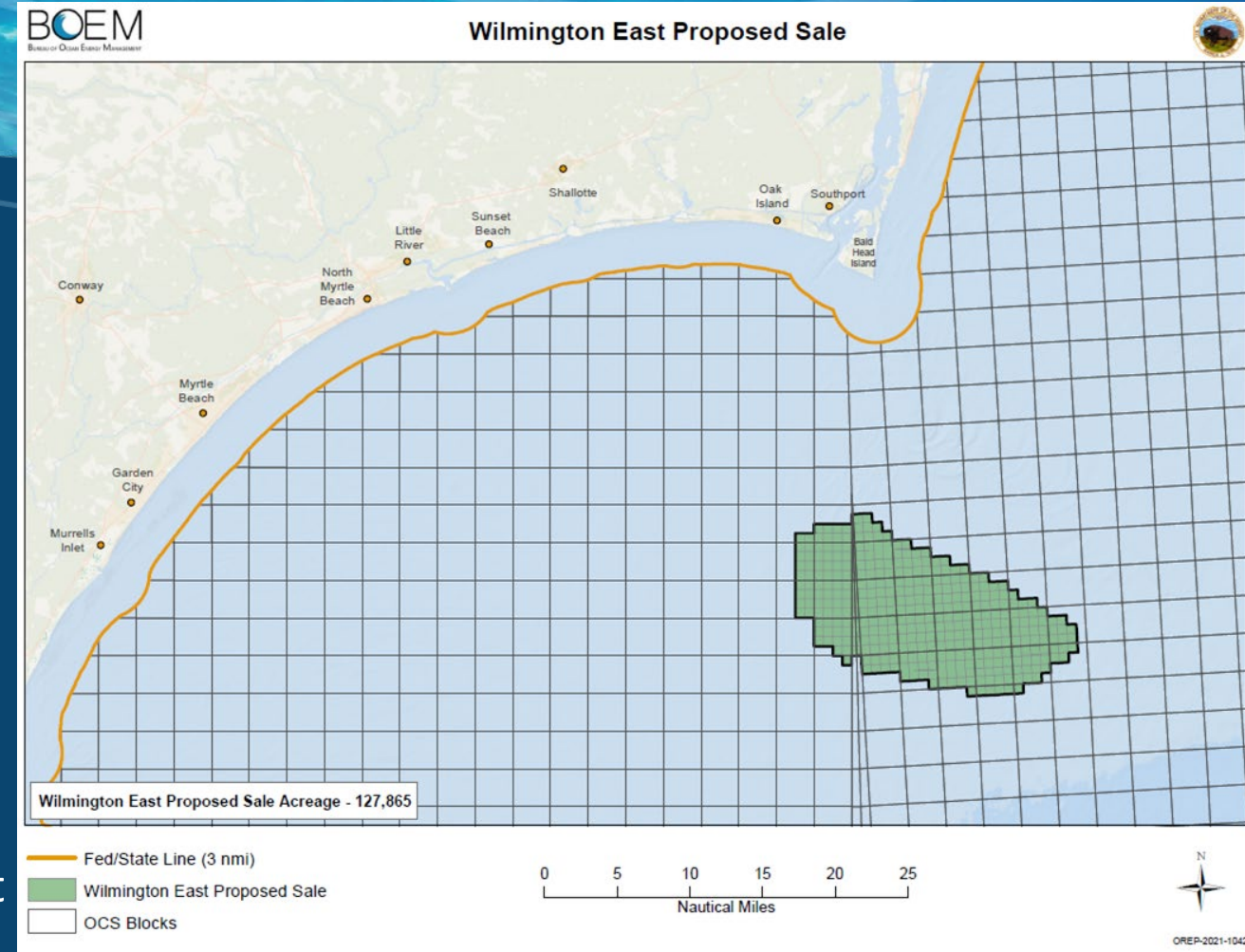
- The leasing phase results in the issuance of a commercial wind energy lease. OCS-A 0545
- Leases may be issued either through a competitive or noncompetitive process.
- A commercial lease gives the lessee the exclusive right to subsequently seek BOEM approval for the development of the leasehold.
- The lease does not grant the lessee the right to construct any facilities; rather, the lease grants the right to use the lease area to develop its plans, which must be approved by BOEM before the lessee can move on to the next stage of the process.



Proposed Sale Notice

- Identifies proposed sale area
- Announces Lease OCS-A 0545 and Addenda
- Identifies proposed auction methodology
- Invites potential bidders to qualify
 - Legal, financial, technical requirements
- Initiates 60-day comment period for stakeholder input

Start
Mon 10/1/18



Proposed Sale Notice

- **BOEM published the Commercial Wind Lease Issuance and Site Assessment Activities on the Atlantic Outer Continental Shelf Offshore North Carolina - Revised Environmental Assessment (EA) in 2015**
 - <https://www.boem.gov/sites/default/files/renewable-energy-program/State-Activities/NC/NC-EA-Camera-FONSI.pdf>
 - Considered the environmental impacts of lease issuance, associated site characterization surveys and approving site assessment plans (e.g., construction and operation of meteorological towers and/or buoys) within the Kitty Hawk, Wilmington East and West WEAs
 - BOEM's preferred alternative included the leasing of all three WEAs, but BOEM only moved forward with the Kitty Hawk WEA

Start
Mon 10/1/10



Proposed Sale Notice

- **On August 13, 2021, BOEM issued a Note to Stakeholders on the Draft Supplemental Environmental Assessment (SEA) for Carolina Long Bay**
 - The announcement initiated a 30-day public comment period that ended on September 12, 2021 (Docket Number BOEM-2021-0055)
 - The SEA will evaluate the 2015 EA and FONSI in concert with current science, studies, circumstances and information relevant to reasonably foreseeable environmental impacts that would occur from site characterization activities and site assessment activities associated with issuing wind energy leases in the Wilmington East WEA



Proposed Sale Notice

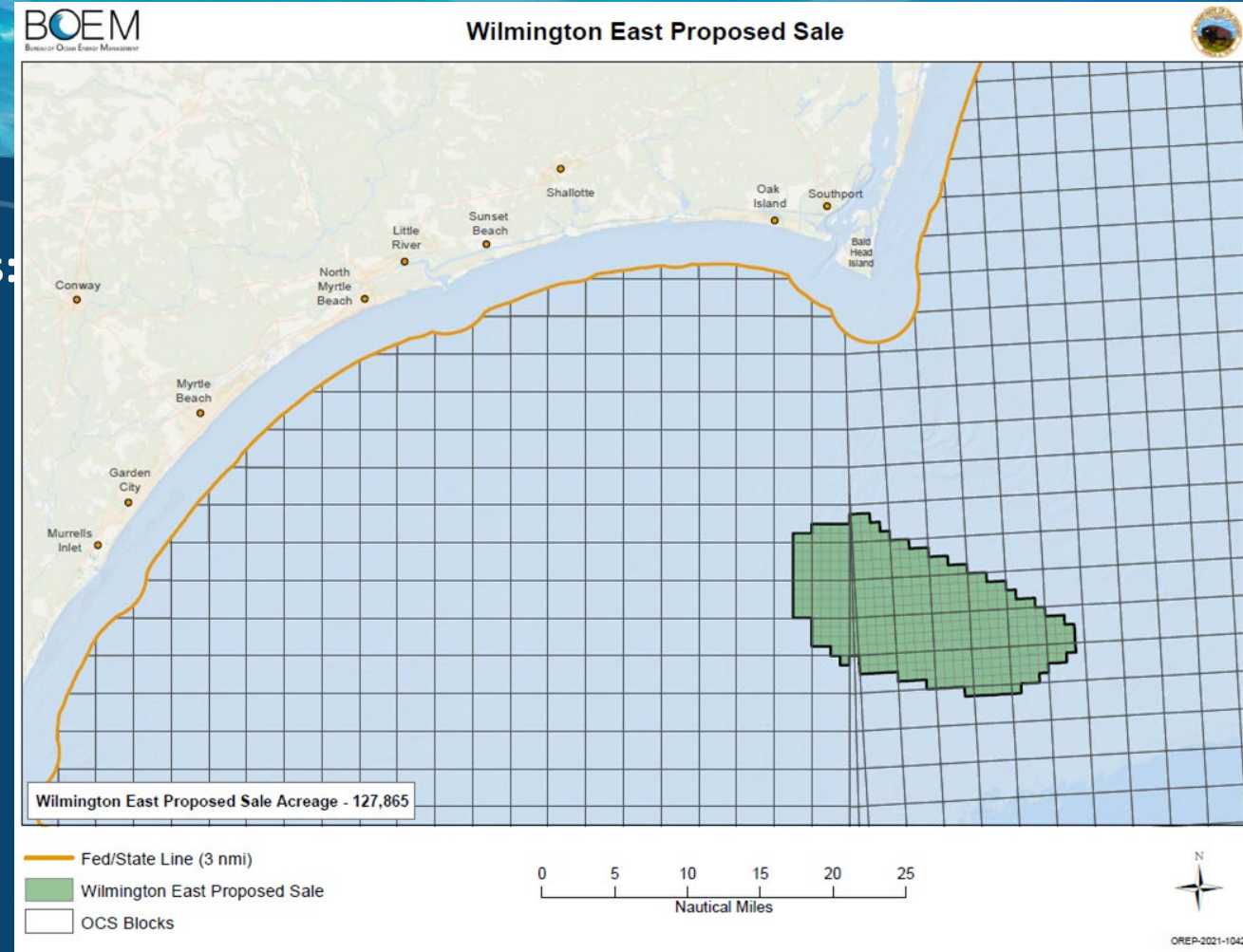
- **Consultations**

- During the 2015 EA, consultation under Section 7 of the Endangered Species Act was covered by a biological opinion (BO) issued in 2013 and valid until 2020
- Before the BO expired in 2020, BOEM requested a new consultation in 2018, with publication in June 2021
- The new BO includes project design criteria (PDCs) and best management practices (BMPs) that reduce the potential for adverse effects to discountable levels. These PDCs can be found in Appendix A of the biological assessment
Mon 10/1/18
(<https://www.boem.gov/sites/default/files/documents/renewable-energy/OREP-Data-Collection-BA-Final.pdf>).

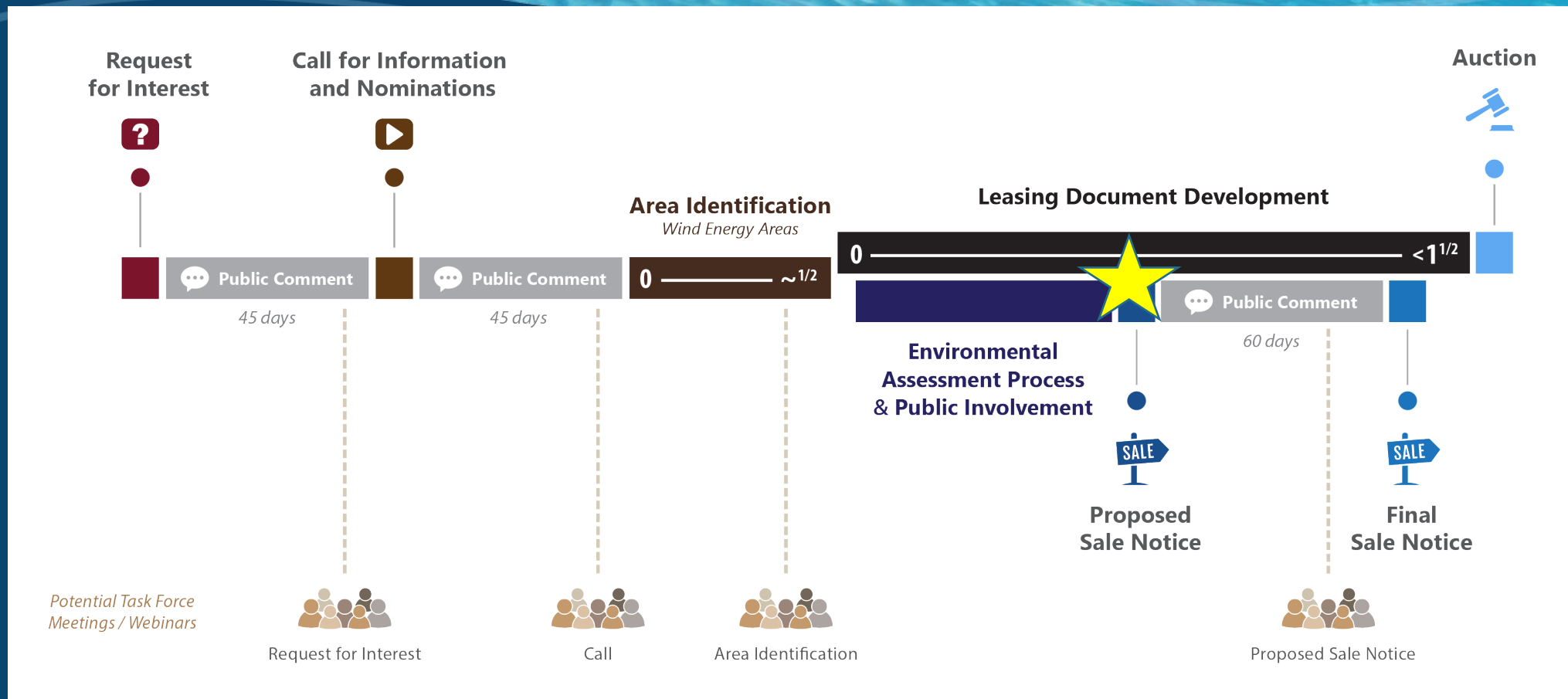


Proposed Sale Notice

- PSN highlights and seeks input on several provisions:
 - Project Labor Agreements
 - Commercial fishing engagement
 - Tribal nations consultations
 - Auction and leasing procedures
- Supports Implementation of EO 13985 & EO 14008



Renewable Energy Leasing Process



- Federal Register publication of PSN is the last formal public comment period prior to an FSN



Bureau of Ocean Energy Management
U.S. Department of the Interior

BOEM.gov

