

COMPREHENSIVE ECOSYSTEM AMENDMENT PUBLIC HEARING SUPPLEMENT May 2008

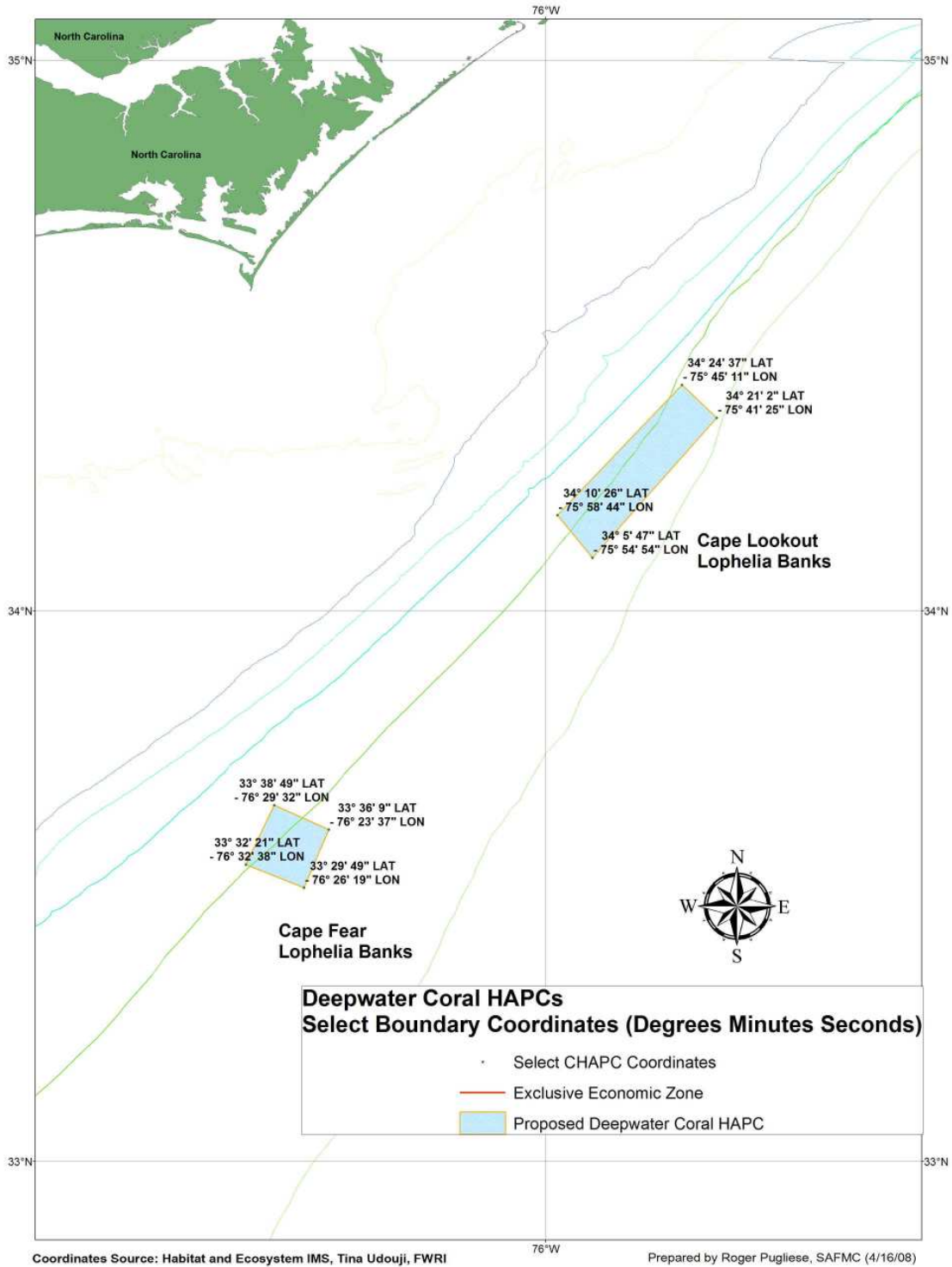


Figure A. Select location points for the proposed North Carolina Deepwater Coral HAPC.

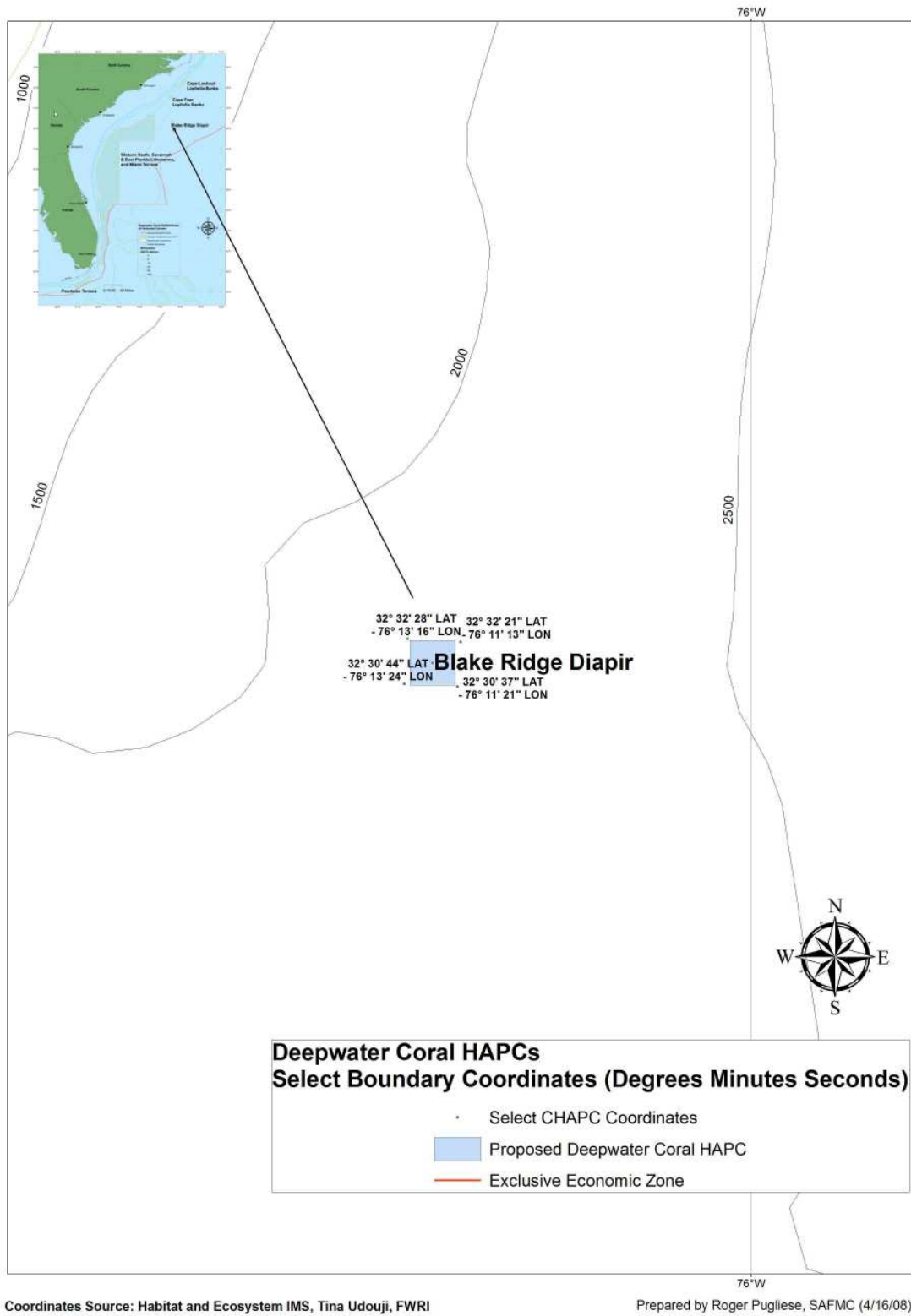


Figure B. Select location points for the proposed Blake Ridge Diapir Deepwater Coral HAPC.

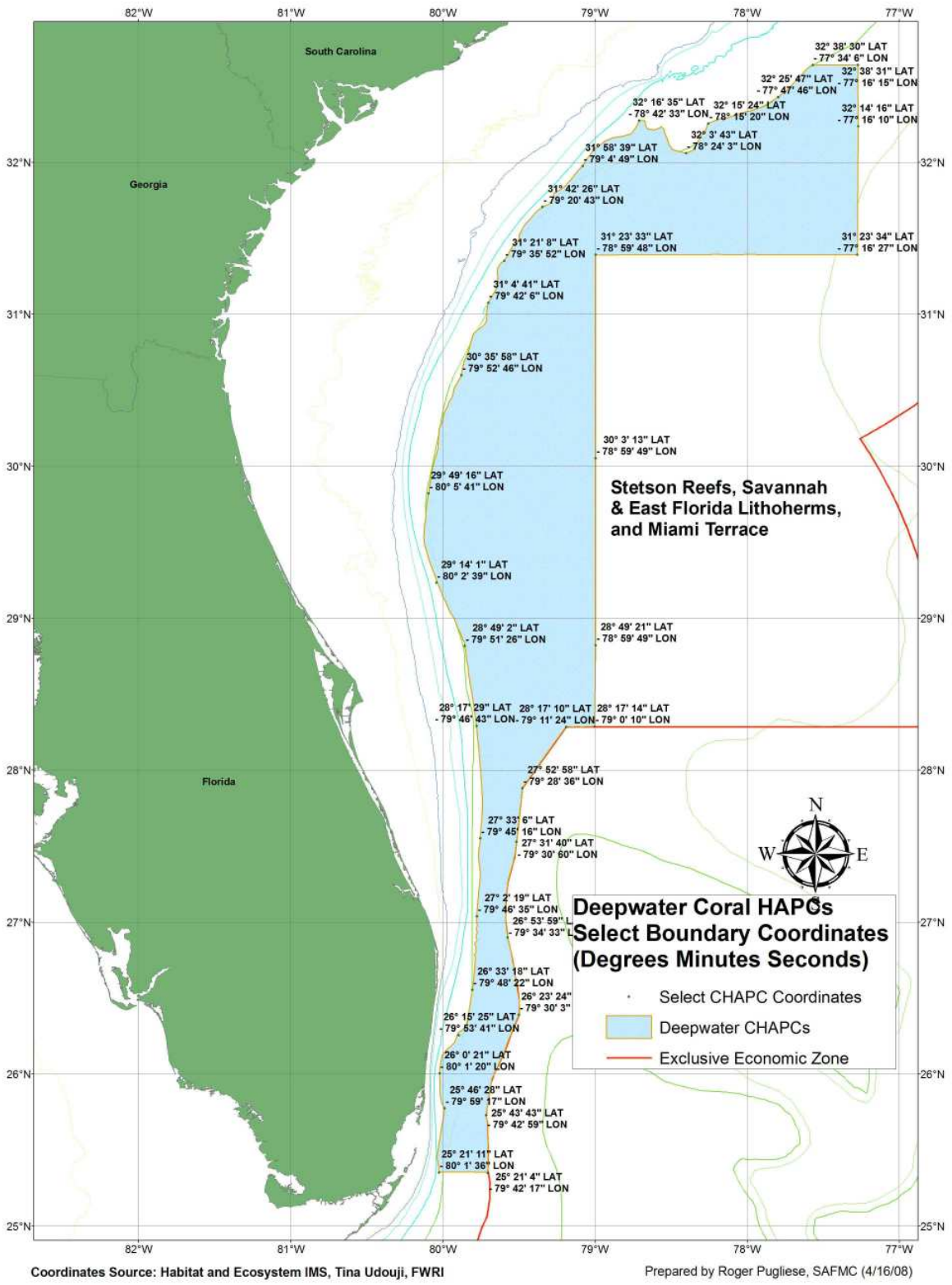


Figure C. Select location points for the proposed Stetson-Miami Deepwater Coral HAPC.

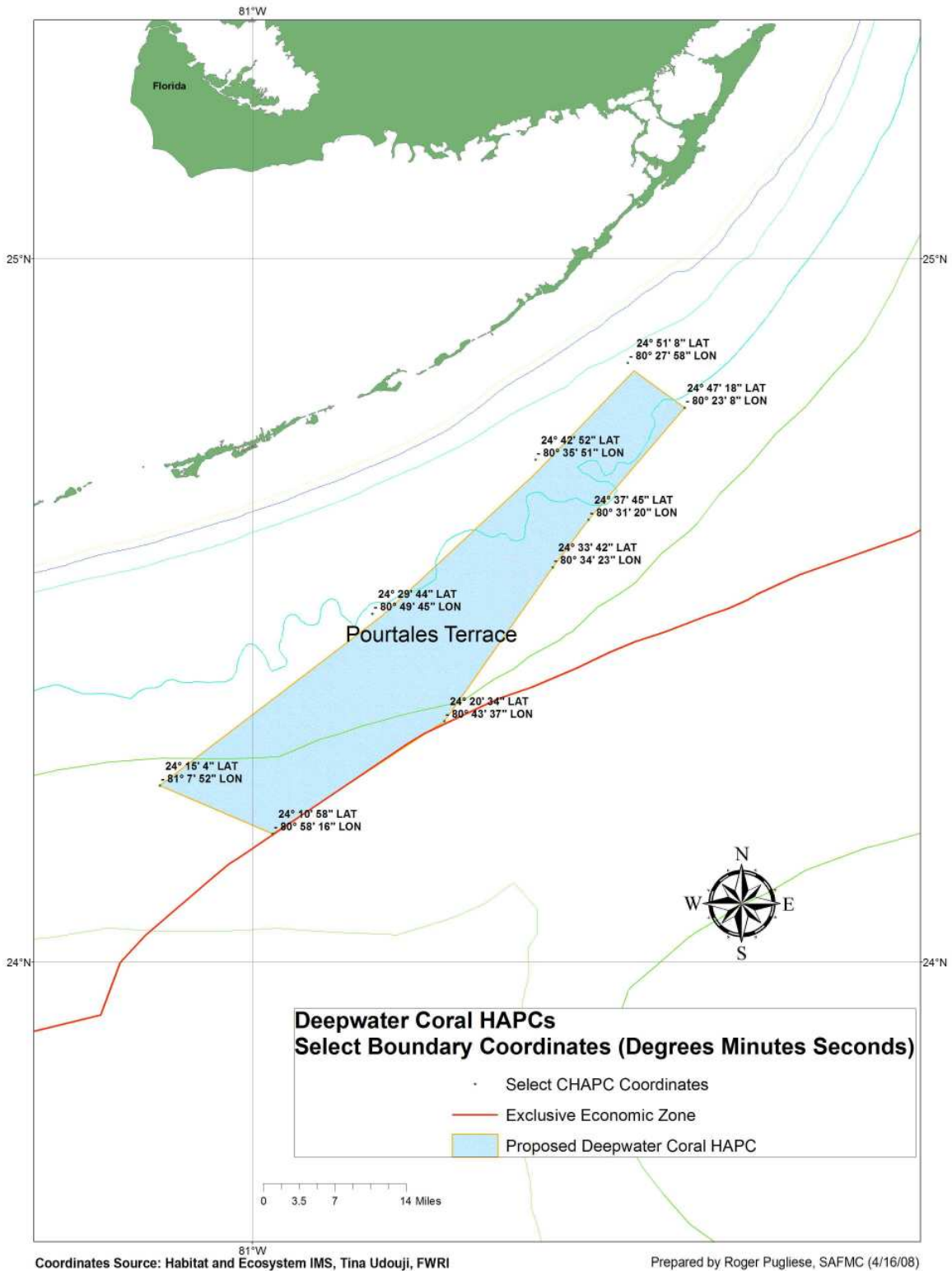


Figure D. Select location points for the proposed Pourtales Terrace Deepwater Coral HAPC.

Table A. Select location points for proposed CHAPC, (Source: FWRI/SAFMC).



CHAPC Coordinates in Minutes Degrees Seconds May 2008

FID	Shape	ID	NAME	LAT_DMS	LON_DMS
0	Point	1	Cape Lookout Lophelia Banks	34° 10' 26"	- 75° 58' 44"
1	Point	2	Cape Lookout Lophelia Banks	34° 24' 37"	- 75° 45' 11"
2	Point	3	Cape Lookout Lophelia Banks	34° 21' 2"	- 75° 41' 25"
3	Point	4	Cape Lookout Lophelia Banks	34° 5' 47"	- 75° 54' 54"
4	Point	5	Cape Fear Lophelia Banks	33° 32' 21"	- 76° 32' 38"
5	Point	6	Cape Fear Lophelia Banks	33° 38' 49"	- 76° 29' 32"
6	Point	7	Cape Fear Lophelia Banks	33° 36' 9"	- 76° 23' 37"
7	Point	8	Cape Fear Lophelia Banks	33° 29' 49"	- 76° 26' 19"
8	Point	9	Stetson/Savannah and East Florida Lithoherms/Miami	27° 52' 58"	- 79° 28' 36"
9	Point	10	Stetson/Savannah and East Florida Lithoherms/Miami	27° 31' 40"	- 79° 30' 60"
10	Point	11	Stetson/Savannah and East Florida Lithoherms/Miami	26° 53' 59"	- 79° 34' 33"
11	Point	12	Stetson/Savannah and East Florida Lithoherms/Miami	26° 23' 24"	- 79° 30' 3"
12	Point	13	Stetson/Savannah and East Florida Lithoherms/Miami	26° 7' 46"	- 79° 36' 9"
13	Point	14	Stetson/Savannah and East Florida Lithoherms/Miami	25° 43' 43"	- 79° 42' 59"
14	Point	15	Stetson/Savannah and East Florida Lithoherms/Miami	25° 21' 4"	- 79° 42' 17"
15	Point	16	Stetson/Savannah and East Florida Lithoherms/Miami	25° 21' 11"	- 80° 1' 36"
16	Point	17	Stetson/Savannah and East Florida Lithoherms/Miami	25° 46' 28"	- 79° 59' 17"
17	Point	18	Stetson/Savannah and East Florida Lithoherms/Miami	26° 0' 21"	- 80° 1' 20"
18	Point	19	Stetson/Savannah and East Florida Lithoherms/Miami	26° 15' 25"	- 79° 53' 41"
19	Point	20	Stetson/Savannah and East Florida Lithoherms/Miami	26° 33' 18"	- 79° 48' 22"
20	Point	21	Stetson/Savannah and East Florida Lithoherms/Miami	27° 2' 19"	- 79° 46' 35"
21	Point	22	Stetson/Savannah and East Florida Lithoherms/Miami	27° 33' 6"	- 79° 45' 16"
22	Point	23	Stetson/Savannah and East Florida Lithoherms/Miami	28° 17' 29"	- 79° 46' 43"
23	Point	24	Stetson/Savannah and East Florida Lithoherms/Miami	28° 49' 2"	- 79° 51' 26"
24	Point	25	Stetson/Savannah and East Florida Lithoherms/Miami	29° 14' 1"	- 80° 2' 39"
25	Point	26	Stetson/Savannah and East Florida Lithoherms/Miami	29° 49' 16"	- 80° 5' 41"
26	Point	27	Stetson/Savannah and East Florida Lithoherms/Miami	30° 35' 58"	- 79° 52' 46"
27	Point	28	Stetson/Savannah and East Florida Lithoherms/Miami	31° 4' 41"	- 79° 42' 6"
28	Point	29	Stetson/Savannah and East Florida Lithoherms/Miami	31° 21' 8"	- 79° 35' 52"
29	Point	30	Stetson/Savannah and East Florida Lithoherms/Miami	31° 42' 26"	- 79° 20' 43"
30	Point	31	Stetson/Savannah and East Florida Lithoherms/Miami	31° 58' 39"	- 79° 4' 49"
31	Point	32	Stetson/Savannah and East Florida Lithoherms/Miami	32° 16' 35"	- 78° 42' 33"
32	Point	33	Stetson/Savannah and East Florida Lithoherms/Miami	32° 3' 43"	- 78° 24' 3"
33	Point	34	Stetson/Savannah and East Florida Lithoherms/Miami	32° 15' 24"	- 78° 15' 20"
34	Point	35	Stetson/Savannah and East Florida Lithoherms/Miami	32° 25' 47"	- 77° 47' 46"
35	Point	36	Stetson/Savannah and East Florida Lithoherms/Miami	32° 38' 30"	- 77° 34' 6"
36	Point	37	Stetson/Savannah and East Florida Lithoherms/Miami	32° 38' 31"	- 77° 16' 15"
37	Point	38	Stetson/Savannah and East Florida Lithoherms/Miami	32° 14' 16"	- 77° 16' 10"
38	Point	39	Stetson/Savannah and East Florida Lithoherms/Miami	31° 23' 34"	- 77° 16' 27"
39	Point	40	Stetson/Savannah and East Florida Lithoherms/Miami	31° 23' 33"	- 78° 59' 48"
40	Point	41	Stetson/Savannah and East Florida Lithoherms/Miami	30° 3' 13"	- 78° 59' 49"
41	Point	42	Stetson/Savannah and East Florida Lithoherms/Miami	28° 49' 21"	- 78° 59' 49"
42	Point	43	Stetson/Savannah and East Florida Lithoherms/Miami	28° 17' 14"	- 79° 0' 10"
43	Point	44	Stetson/Savannah and East Florida Lithoherms/Miami	28° 17' 10"	- 79° 11' 24"
44	Point	45	Pourtales Terrace	24° 15' 4"	- 81° 7' 52"
45	Point	46	Pourtales Terrace	24° 29' 44"	- 80° 49' 45"
46	Point	47	Pourtales Terrace	24° 42' 52"	- 80° 35' 51"
47	Point	48	Pourtales Terrace	24° 51' 8"	- 80° 27' 58"
48	Point	49	Pourtales Terrace	24° 47' 18"	- 80° 23' 8"
49	Point	50	Pourtales Terrace	24° 37' 45"	- 80° 31' 20"
50	Point	51	Pourtales Terrace	24° 33' 42"	- 80° 34' 23"
51	Point	52	Pourtales Terrace	24° 20' 34"	- 80° 43' 37"
52	Point	53	Pourtales Terrace	24° 10' 58"	- 80° 58' 16"
53	Point	54	Blake Ridge Diapir	32° 30' 44"	- 76° 13' 24"
54	Point	55	Blake Ridge Diapir	32° 32' 28"	- 76° 13' 16"
55	Point	56	Blake Ridge Diapir	32° 32' 21"	- 76° 11' 13"
56	Point	57	Blake Ridge Diapir	32° 30' 37"	- 76° 11' 21"

Location Points and Chart for Fishermen Proposal for Golden Crab Allowable Gear Areas

Table GC1. Location points for Middle Zone Golden Crab Allowable Gear Areas (Source: GC Fishermen).

Location Points		Golden Crab Allowable Gear Area Proposal				Middle Zone
FID	Shape	Zone	Lat_DecDe	Lon_DecDe	LatDegMinSec	LongDegMinSec
1		East B	25.35	-79.97	25° 21' 0"	- 79° 58' 12"
2		East B	25.38	-79.97	25° 22' 48"	- 79° 58' 12"
3		East B	25.43	-79.95	25° 25' 48"	- 79° 57' 0"
4		East B	25.54	-79.91	25° 32' 24"	- 79° 54' 36"
5		East B	25.62	-79.91	25° 37' 12"	- 79° 54' 36"
6		East B	25.62	-79.93	25° 37' 12"	- 79° 55' 48"
7		East B	25.82	-79.93	25° 49' 12"	- 79° 55' 48"
8		West A	25.82	-79.99	25° 49' 12"	- 79° 59' 24"
9		West A	25.35	-79.93	25° 21' 0"	- 79° 55' 48"
10		West A	25.43	-79.89	25° 25' 48"	- 79° 53' 24"
11		West A	25.53	-79.83	25° 31' 48"	- 79° 49' 48"
12		West A	25.64	-79.79	25° 38' 24"	- 79° 47' 24"
13		West A	25.73	-79.78	25° 43' 48"	- 79° 46' 48"
14		West A	25.93	-79.77	25° 55' 48"	- 79° 46' 12"
15		West A	26.00	-79.77	26° 0' 0"	- 79° 46' 12"
16		West A	26.07	-79.77	26° 4' 12"	- 79° 46' 12"
17		West A	26.07	-79.81	26° 4' 12"	- 79° 48' 36"
18		West A	26.29	-79.80	26° 17' 24"	- 79° 47' 60"
19		West A	26.29	-79.88	26° 17' 24"	- 79° 52' 48"
20		East A	26.11	-79.61	26° 6' 36"	- 79° 36' 36"
21		East A	26.98	-79.60	26° 58' 48"	- 79° 35' 60"
22		East A	27.00	-79.60	27° 0' 0"	- 79° 35' 60"
23		East A	27.13	-79.62	27° 7' 48"	- 79° 37' 12"
24		East A	27.24	-79.63	27° 14' 24"	- 79° 37' 48"
25		East A	27.48	-79.62	27° 28' 48"	- 79° 37' 12"
26		East A	27.55	-79.62	27° 33' 0"	- 79° 37' 12"
27		East A	27.81	-79.62	27° 48' 36"	- 79° 37' 12"
28		East A	27.94	-79.62	27° 56' 24"	- 79° 37' 12"
29		East A	28.00	-79.62	28° 0' 0"	- 79° 37' 12"

Note: Allowable Gear Area Boundaries for Area A and Area B

Industry Proposed Area A-

Northern Boundary of 28 Degrees N. Latitude

Western boundary following the CHAPC boundary connecting to points 19 to 9

Southern boundary of the CHAPC boundary

Eastern boundary points 29 to 20 then following the CHAPC boundary to where it intersects the southern CHAPC boundary.

Industry Proposed Area B-

Northern Boundary of points 8 to 7

Western boundary following the Western CHAPC boundary

Southern boundary of the CHAPC boundary to point 1

Eastern boundary of points 1 to 7

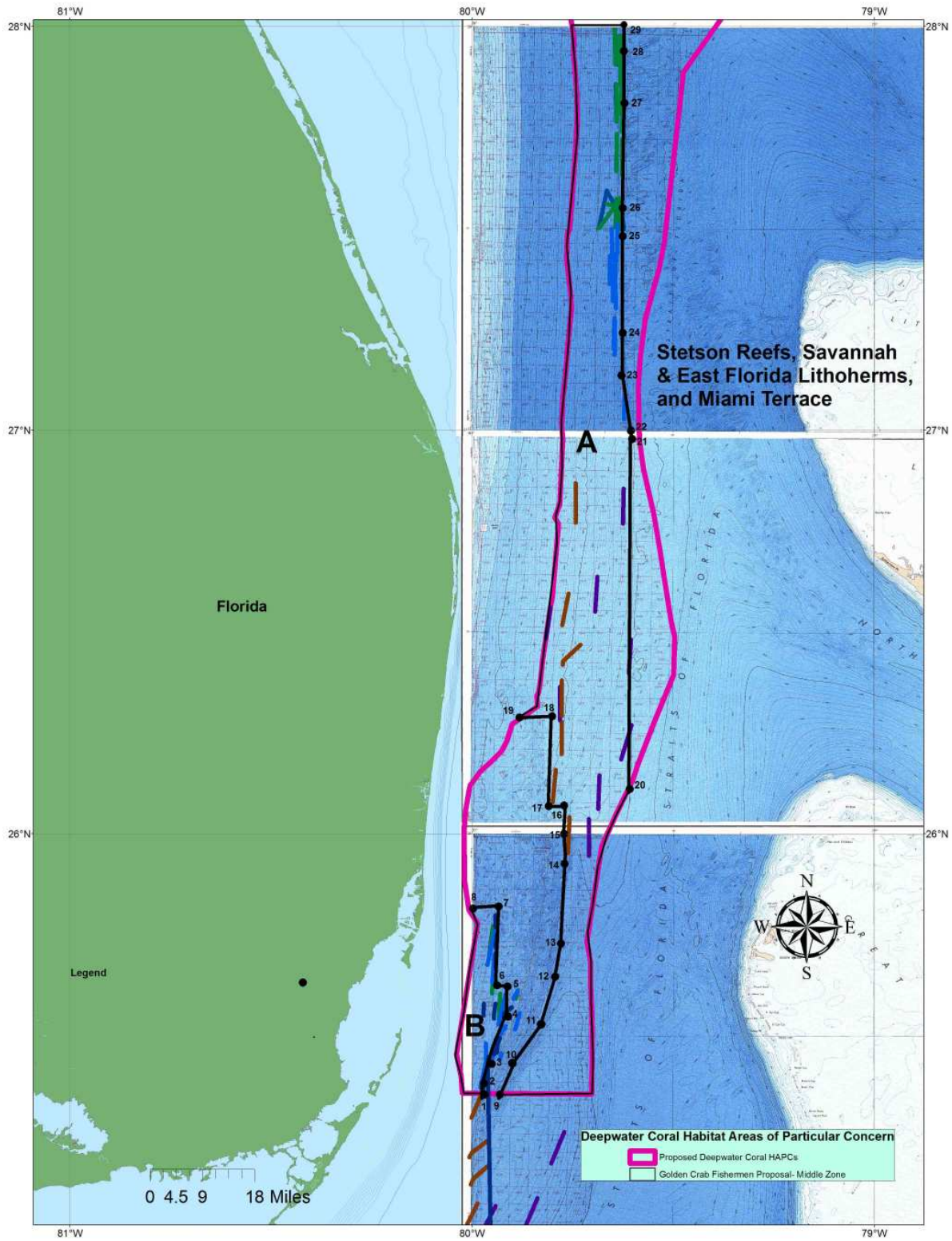


Figure GC1. Golden Crab Fishermen Proposal for Middle Zone Allowable Gear Area (Note: Points correspond to Table GC1 of location points provided by industry - Prepared by Roger Pugliese SAFMC).

Table GC2. Location points for Southern Zone Golden Crab Allowable Gear Areas (Source: GC Fishermen).

Location Points		Golden Crab Allowable Gear Area Proposal		Southern Zone
FID	Shape	Zone	LatDegMinSec	LongDegMinSec
1	Point	GCSZ	24° 13' 45.73"	- 79° 4' 53.89"
2	Point	GCSZ	24° 14' 7.25"	- 80° 53' 26.48"
3	Point	GCSZ	24° 10' 57.35"	- 80° 58' 17.65"

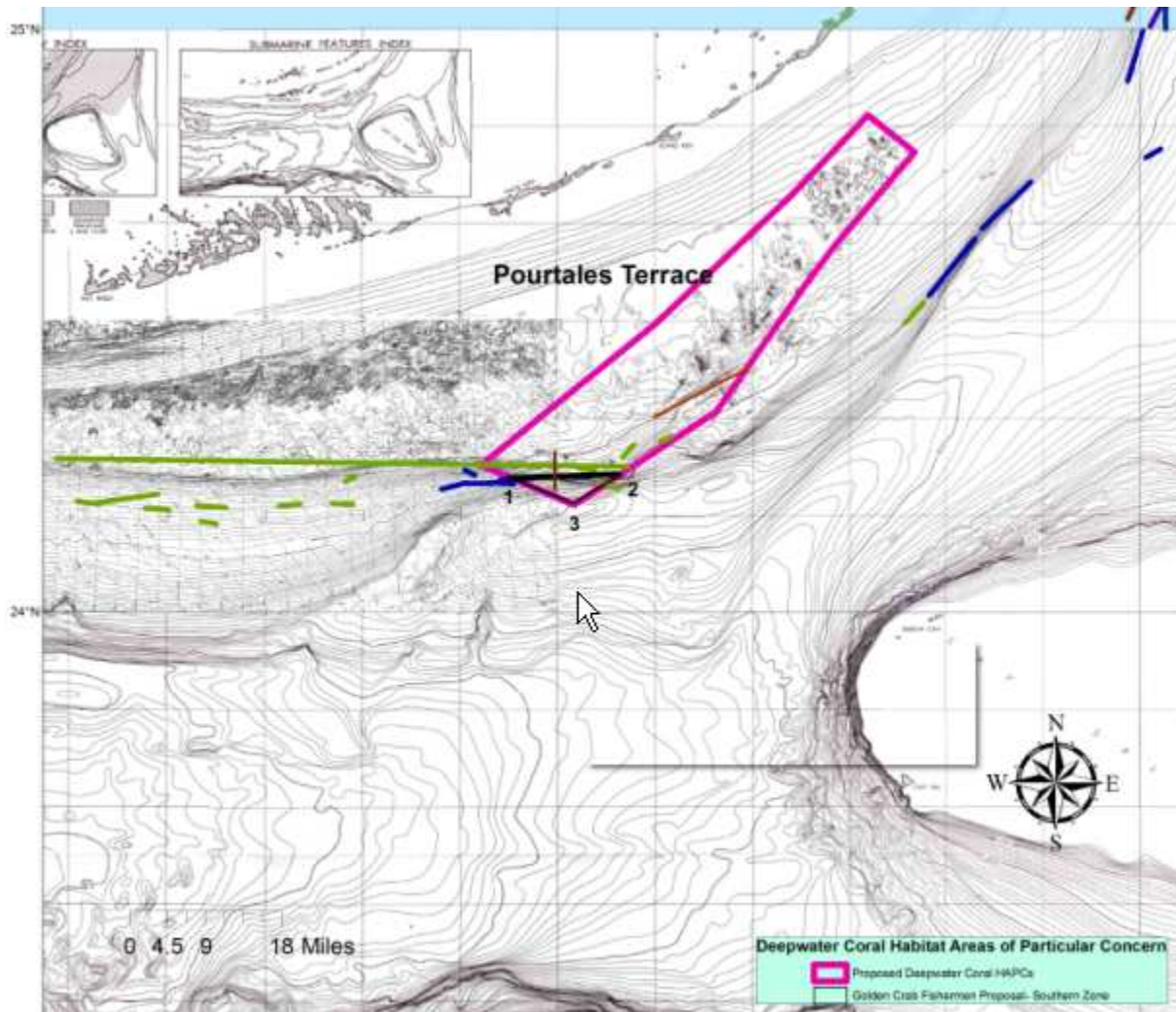


Figure GC2. Golden Crab Fishermen Proposal for Southern Zone Allowable Gear Area (Note: Points correspond to Table GC2 area developed with industry - Prepared by Roger Pugliese SAFMC).

Table GC3. Location points for Northern Zone Golden Crab Allowable Gear Areas (Source: GC Fishermen).

Location Points		Golden Crab Allowable Gear Area Proposal		Northern Zone
FID	Shape	Zone	LatDegMinSec	LongDegMinSec
1	Point	GCNZ	29° 00' 00"	-79° 52' 47.53"
2	Point	GCNZ	29° 00' 00"	-79° 48' 58.82"
3	Point	GCNZ	28° 38' 00"	-79° 43' 6.03"
4	Point	GCNZ	28° 00' 00"	-79° 37' 52.77"
5	Point	GCNZ	28° 00' 00"	-79° 41' 30.51"
6	Point	GCNZ	28° 38' 00"	-79° 45' 36.88"

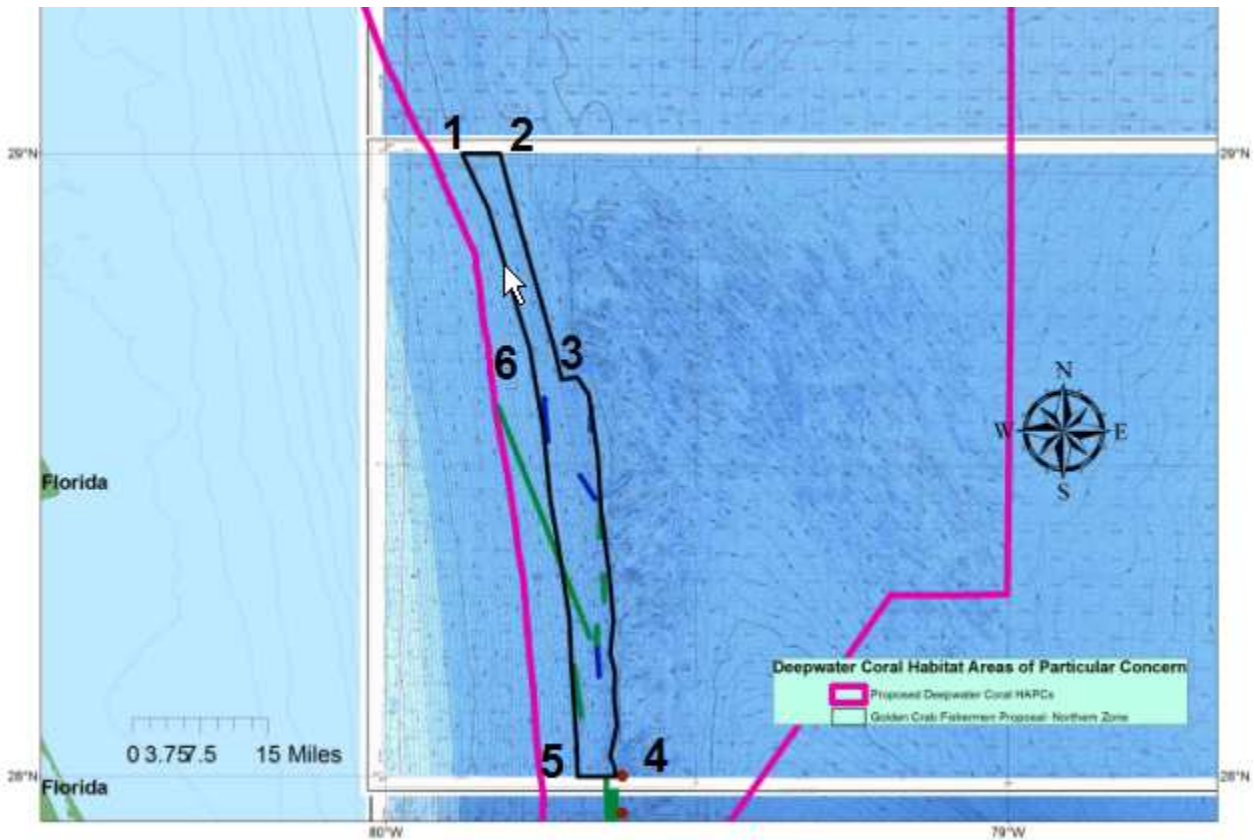


Figure GC3. Golden Crab Fishermen Proposal for Northern Zone Allowable Gear Area (Note: Points correspond to Table GC3 of location points approximating bathymetry and points provided by industry - Prepared by Roger Pugliese SAFMC).