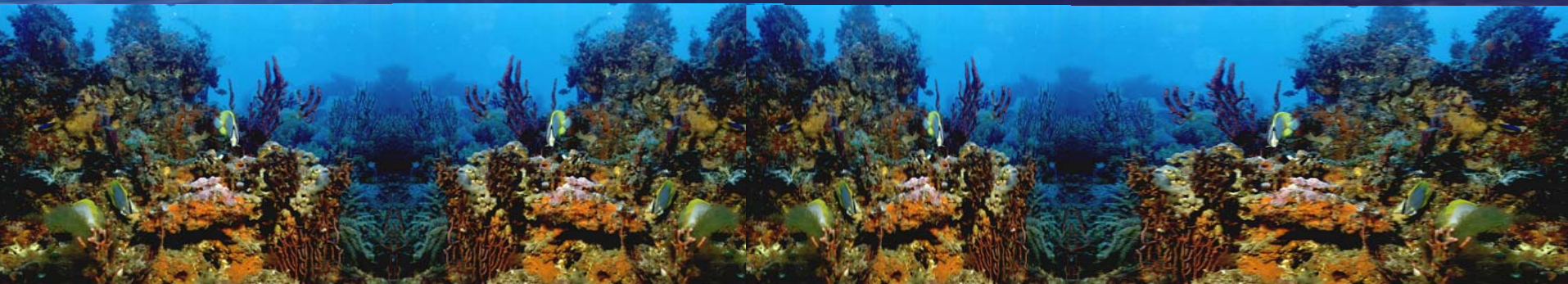


Fishery Ecosystem Plan and Comprehensive Ecosystem Amendment of The South Atlantic Region

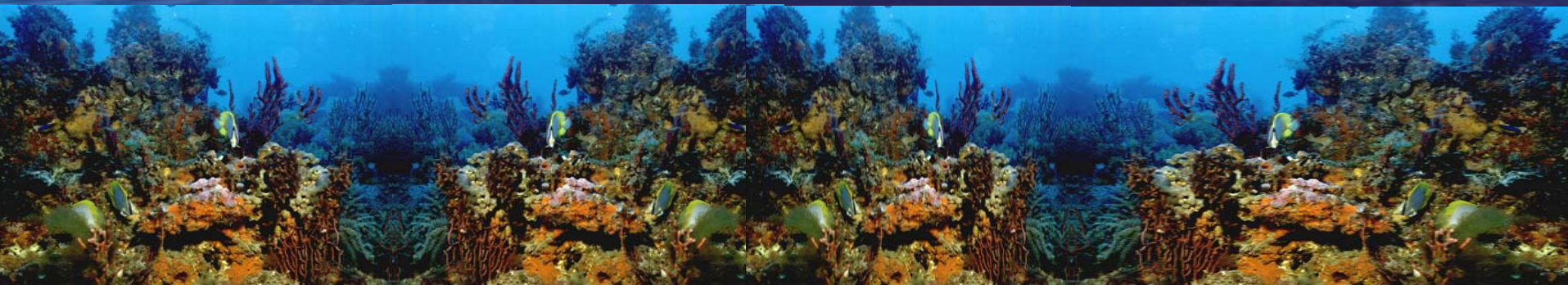
Public Hearings May, 2008

Roger Pugliese
Senior Fishery Biologist
Fishery Ecosystem Plan and
Comprehensive Ecosystem Amendment Coordinator



Overview

- Fishery Ecosystem Plan
- Comprehensive Ecosystem Amendment and Proposed Management Actions and Alternatives



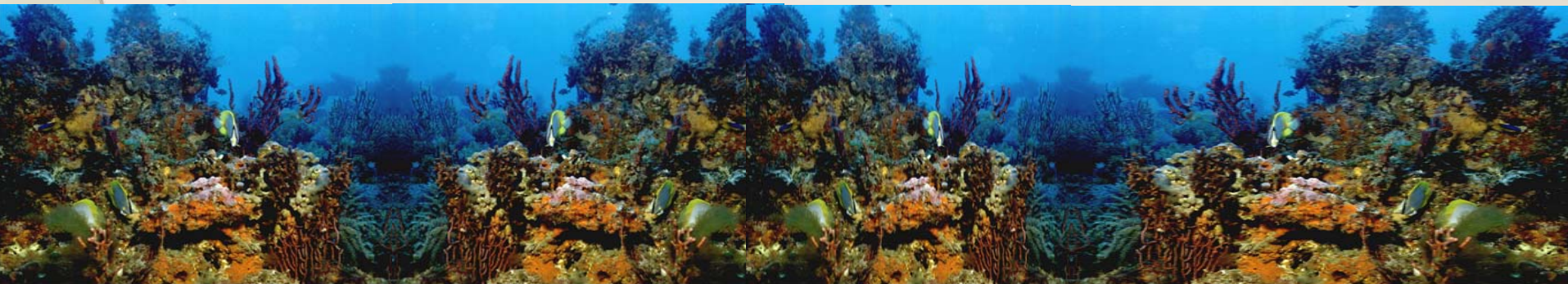
Fishery Ecosystem Plan Background and Development Process

Core Document is the SAFMC Habitat Plan

Section, Species and Habitat Writing Teams established reviewed and provided revisions and updates based on FEP outline provided by the Council

Other Key Documents

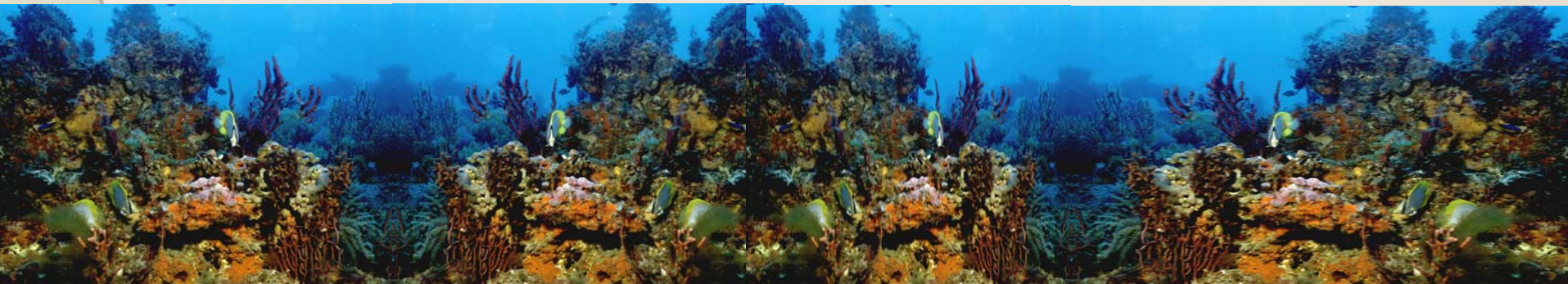
- **South Atlantic Stock Assessment and Fishery Evaluation Reports**
- **SAFMC, ASMFC HMS Fishery Management Plans**
- **North Carolina Habitat Plan**
- **Southeast Aquatic Resource Partnership Aquatic Habitat Plan**



Fishery Ecosystem Plan of the South Atlantic Region

Volume structure:

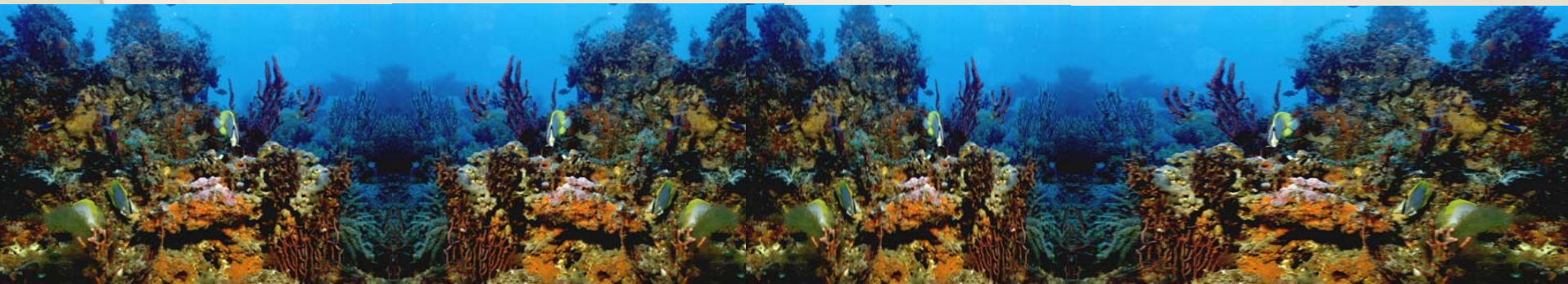
- **FEP Volume I Introduction and Overview of FEP for the South Atlantic Region**
- **FEP Volume II South Atlantic Habitats and Species**
- **FEP Volume III South Atlantic Human and Institutional Environment**
- **FEP Volume IV Threats to South Atlantic Ecosystem and Recommendations**
- **FEP Volume V South Atlantic Research Programs and Data Needs**
- **FEP Volume VI References and Appendices**



Fishery Ecosystem Plan for the South Atlantic Region

This FEP:

- **Provides a comprehensive view of the Biological, Social and Economic characteristics of the South Atlantic Ecosystem**
- **Updates Essential Fish Habitat (EFH) and EFH -HAPC information**
- **Serves as a Source Document for this first (and future) Comprehensive Ecosystem Amendments (CEA)**



The CEA Development Process

- Serves as the vehicle to move the Council to ecosystem-based management
- Draws from and builds on the biological, economic, and social information presented in the FEP and where possible, address issues identified in the FEP
- Provides the Council with a mechanism to fully review and evaluate needed actions across multiple fisheries, evaluate the impacts of management, and facilitate development of a new CEA with measures that could apply to an individual fishery or across FMPs.

Comprehensive Ecosystem Amendment

- **The underlying need for the proposed actions in this amendment is to protect the deepwater coral ecosystems in the South Atlantic Fishery Management Council's jurisdiction . These proposed actions would: establish five Deepwater Coral HAPCs to protect what is thought to be the largest continuous distribution of pristine, untouched, deepwater coral ecosystems in the world.**
- **Addresses Essential Fish Habitat (EFH) mandates in the EFH Final Rule highlighting**
 - **spatial presentations of designated EFH and EFH-HAPCs presented through Council Internet Map Server**
 - **The FEP presentation of updated habitat information supporting EFH designations.**

Sample screen shot of spatial presentation of EFH-HAPCs on South Atlantic Habitat and Ecosystem Internet Map Server

The screenshot displays the South Atlantic Habitat and Ecosystem Internet Map Server (SAHEIMS) interface. The main map shows the South Atlantic region with various features. A query results window is overlaid on the map, displaying the following data:

Rec ID	NAME	ECO_FUNC	SENSITIV	THREAT	RARITY	AREA_METR2	AREA_MILE2	#SHAPE#	#ID#
1	10 Fathom Ledge	High	Medium	Low	Medium	293837907.0186	113.4515	[polygon]	2
2	Big Rock	High	Medium	Medium	High	70465729.9747	27.207	[polygon]	3

Below the table, there is a link: [Zoom to these records](#). The map shows two yellow rectangles highlighting the locations of the 10 Fathom Ledge and Big Rock. A legend on the right side of the map identifies the symbols used: Selected Features (yellow rectangle), Dolphin-Wahoo EFH-HAPC (blue rectangle), Cities and Places (black dot), and States - Land Shading (light blue). The interface includes a toolbar on the left with various map navigation tools and a status bar at the bottom.

Management Alternatives Under Consideration in the Comprehensive Ecosystem Amendment

- **Alternative 1. No Action.** Do not establish additional Coral HAPCs.

Management Alternatives

- **Alternative 2.** Establish Deepwater Coral Habitat Areas of Particular Concern:

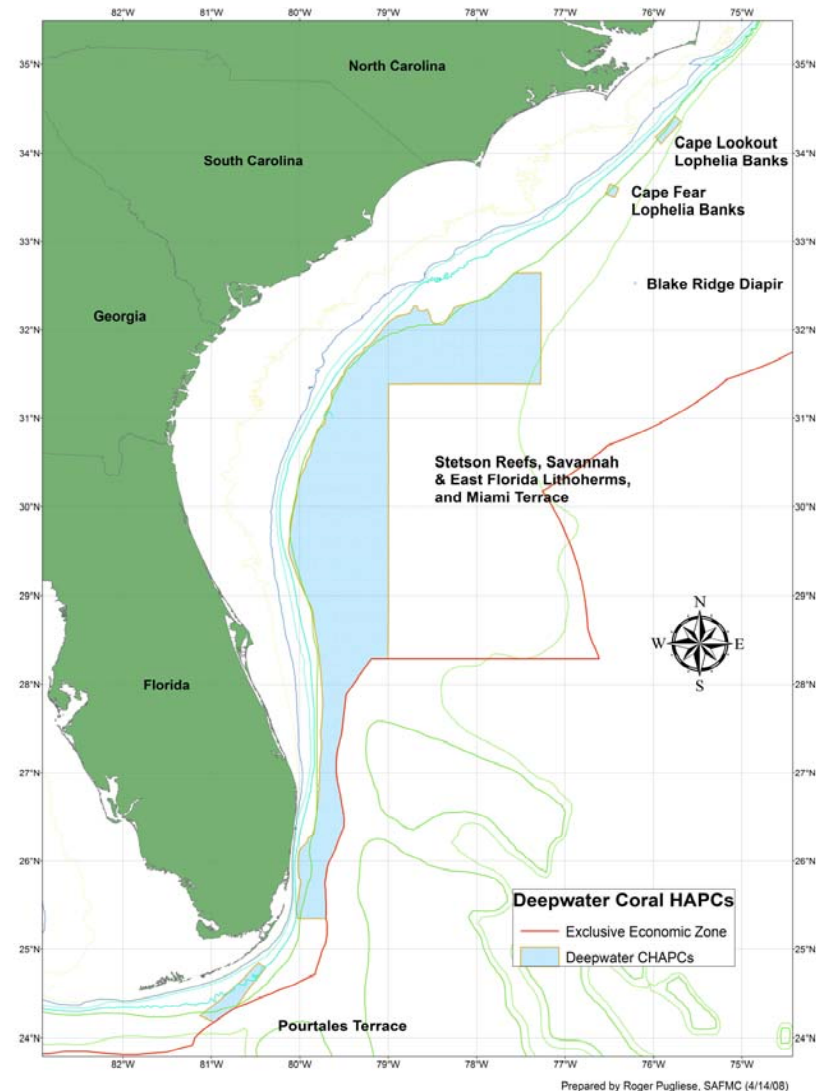
In the deepwater coral HAPCs, no person may:

- 1. Use a bottom longline, trawls (mid-water and bottom), dredge, pot or trap.
- 2. If aboard a fishing vessel, anchor, use an anchor and chain, or use a grapple and chain.
- 3. Possess any species regulated by the coral FMP.
- 4. Fish for golden crab in designated areas without an approved VMS

Deepwater Coral Habitat Areas of Particular Concern

- Proposal developed through Habitat and Environmental Protection Advisory Panel and Coral Advisory Panel deliberations
 - Technical support documents prepared for the South Atlantic Council 2004 and 2006
 - 2004, 2006 and 2007 Joint Habitat and Coral Advisory Panel Reports to Council
 - Updated deepwater habitat distribution and characterization provided at the November 2007 Advisory Panel meeting and to the Council in March 2008

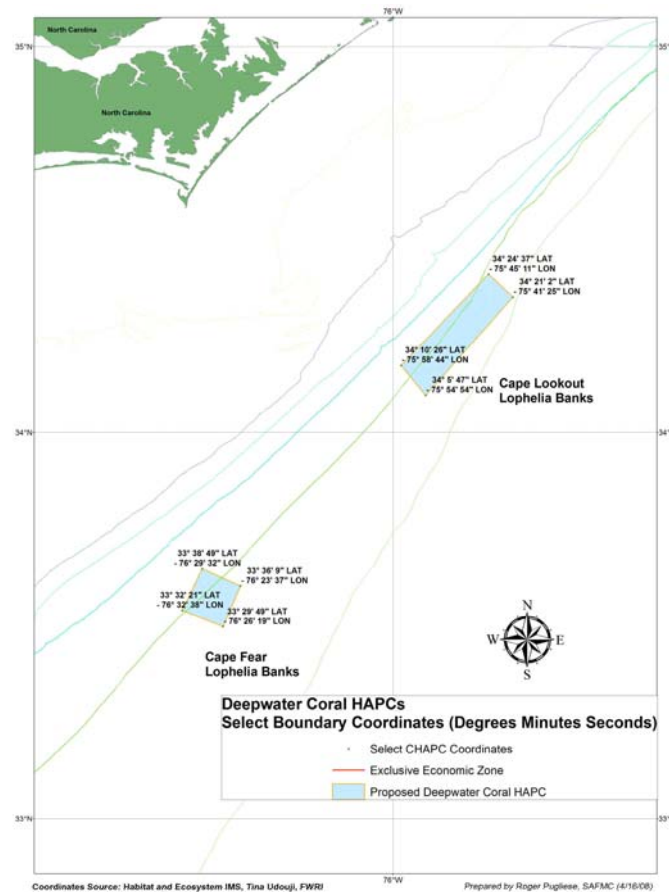
Alternative 2. Establish Deepwater Coral Habitat Areas of Particular Concern:



Alternative 2. Establish Deepwater Coral Habitat Areas of Particular Concern:

Sub-Alternative 2a. Cape Lookout Lophelia Banks HAPC;

Sub-Alternative 2b. Cape Fear Lophelia Banks HAPC;



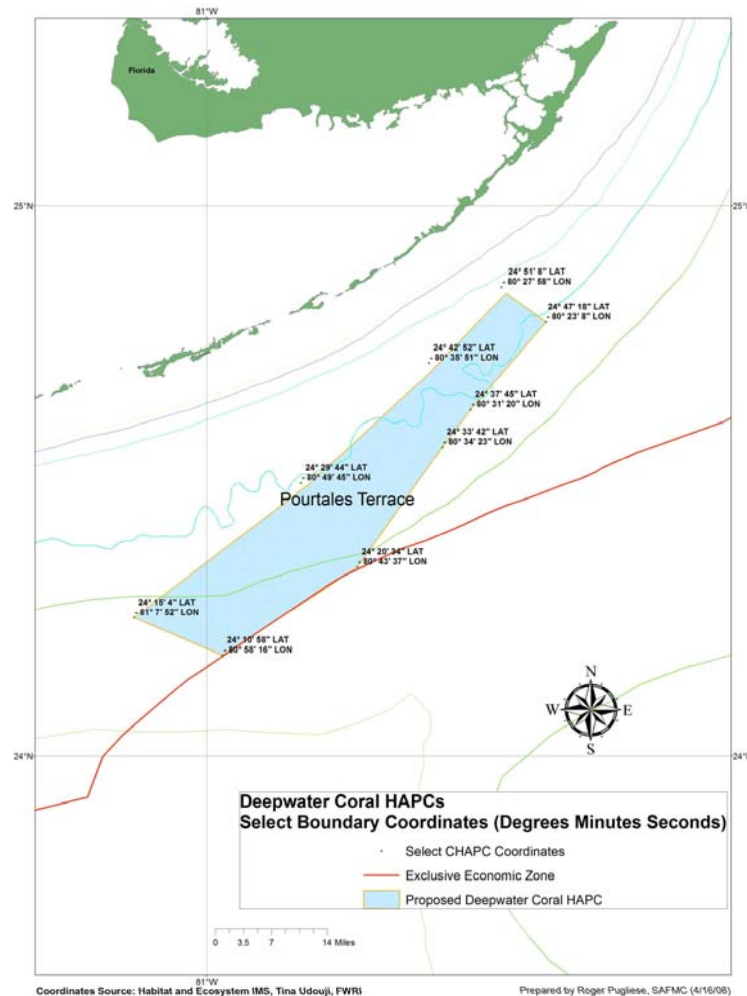
Alternative 2. Establish Deepwater Coral Habitat Areas of Particular Concern:

- Sub-Alternative 2c. Stetson Reefs, Savannah and East Florida Lithoherms, and Miami Terrace HAPC



Alternative 2. Establish Deepwater Coral Habitat Areas of Particular Concern:

Sub-Alternative 2d. Pourtales Terrace HAPC; and



Alternative 2. Establish Deepwater Coral Habitat Areas of Particular Concern:

Sub-Alternative 2e. The Blake Ridge Diapir Methane Seep HAPC.



Coordinates Source: Habitat and Ecosystem IMS, Tina Udouji, FWRI

Prepared by Roger Pugliese, SAFMC (4/16/08)

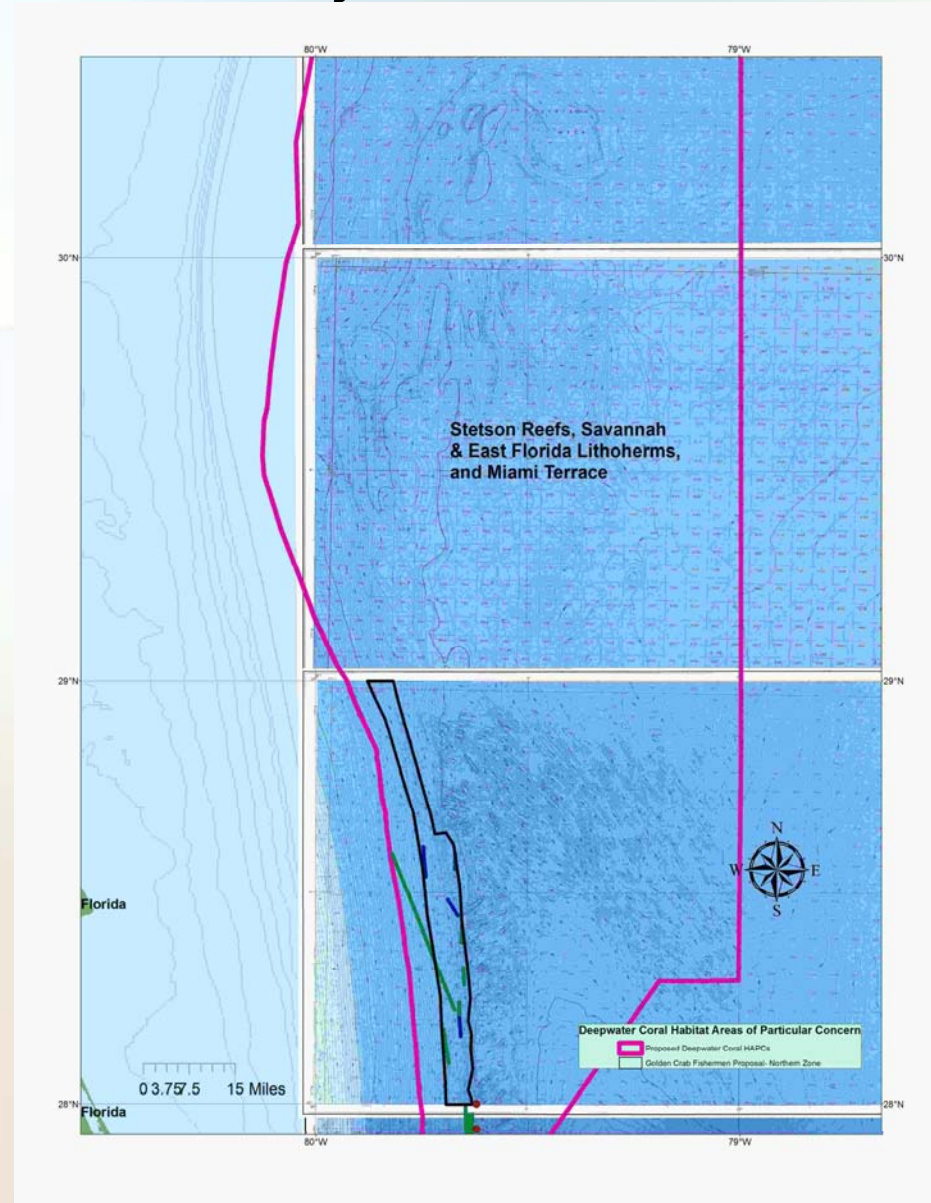
Alternative 3. Establish Allowable Gear Areas for the Golden Crab Fishery

Alternative 3a. Create an allowable golden crab fishing area in the Northern Zone within the CHAPC boundaries.

Alternative 3b. Create an allowable golden crab fishing area in the Middle Zone within the CHAPC boundaries.

Alternative 3c. Create an allowable golden crab fishing area in the Southern Zone within the CHAPC boundaries.

Golden Crab Advisory Panel Northern Zone Proposal



Golden Crab Advisory Panel Middle Zone Proposal



Golden Crab Advisory Panel Southern Zone Proposal



Habitat Distribution Associated with the Stetson-Miami CHAPC and Golden Crab Fishermen Proposal for the Northern Zone



Habitat Distribution Associated with the Stetson-Miami CHAPC and Golden Crab Fishermen Proposal for the Middle Zone



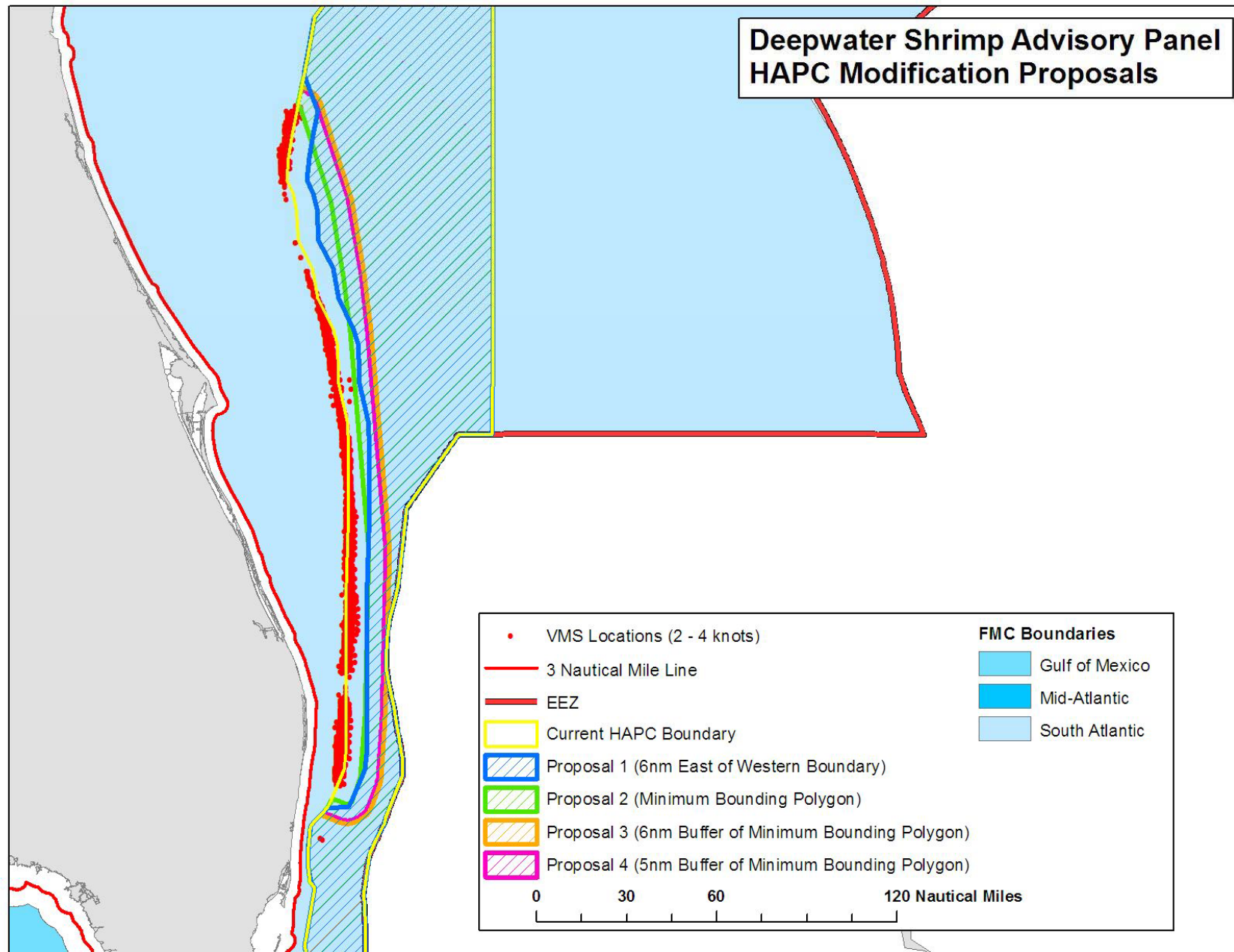
Habitat Distribution Associated with the Pourtales CHAPC and Golden Crab Fishermen Proposal for the Southern Zone



Alternative 4. Move the Western boundary of the Middle C-HAPC east to exclude royal red fishing areas represented by the Vessel Monitoring System (Alternatives developed by Deepwater Shrimp Advisory Panel):

- **Sub-Alternative 4a. Move the west boundary of the proposed C-HAPC 6 nautical miles to the east between the following points: (a) 30 degrees 16 minutes 35.354 seconds N and (b) 26 degrees 12 minutes 56.273 seconds N.;**
- **Sub-Alternative 4b. Move the west boundary of the proposed C-HAPC eastward to exclude all VMS points from the C-HAPC;**
- **Sub-Alternative 4c. Move the west boundary of the proposed C-HAPC eastward 5 nautical miles from the eastern boundary of the polygon from Alternative 2; and**
- **Sub-Alternative 4d. Move the west boundary of the proposed C-HAPC eastward 6 nautical miles from the eastern boundary of the polygon from Alternative 2.**

Deepwater Shrimp Advisory Panel HAPC Modification Proposals

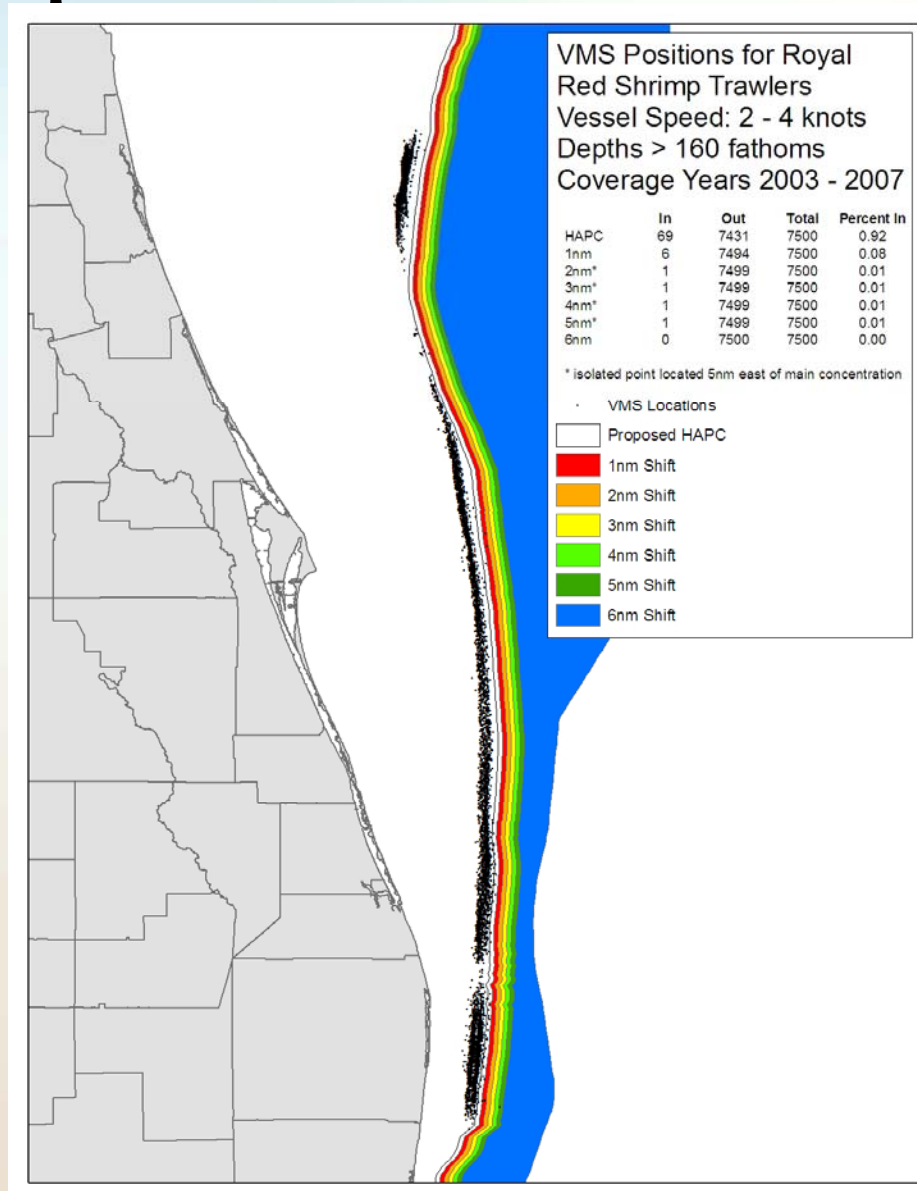


Royal Red Fishing Vessel Monitoring System



Vessel Monitoring System Positions for Royal Red Shrimp Trawlers 2003-2007

NMFS SEFSC analyses of royal red shrimp trawl locations from the VMS in relationship to the Western boundary of the proposed Stetson-Miami CHAPC and 1-6 mile Eastern shift of that Boundary.



Habitat Distribution Associated with the Stetson-Miami CHAPC and Royal Red Shrimp fishing



Amend the Golden Crab FMP to Require Vessel Monitoring

- **Alternative 1.** No action. Would not require use of an approved vessel monitoring system (VMS) by any vessel with a limited access golden crab permit and approved crustacean traps fishing for golden crab within designated areas in the Stetson-Miami Terrace HAPC and Pourtales Terrace HAPC where fishing has occurred historically and does not impact deepwater coral habitats.

Amend the Golden Crab FMP to Require Vessel Monitoring

- **Alternative 2.** Require use of an approved vessel monitoring system (VMS) by any vessel with a limited access golden crab permit and approved crustacean traps fishing for golden crab within designated areas in the Stetson-Miami Terrace HAPC and Pourtales Terrace HAPC where fishing has occurred historically and does not impact deepwater coral habitats.

Amend the Golden Crab FMP to Require Vessel Monitoring

- **Alternative 3.** Require use of an approved vessel monitoring system (VMS) by any vessel fishing with a limited access golden crab permit in the South Atlantic Council's area of jurisdiction.

Amend the Golden Crab FMP to Require Vessel Monitoring

- **Alternative 4.** Require monitoring of golden crab vessels using acoustic monitoring.

The monitoring of vessels and/or trap sets using acoustics was discussed with the Advisory Panel recommending it be considered for public hearing. Present acoustic devices could potentially provide monitoring of vessels and/or traps. However, the network of fixed buoys to hold such monitors and transmission capabilities necessary to monitor the fishery does not exist at this time.

South Atlantic Habitat and Ecosystem Partners



NOAA's

Undersea Research Center
University of North Carolina Wilmington



e
ENVIRONMENTAL DEFENSE
finding the ways that work



The Nature Conservancy
SAVING THE LAST GREAT PLACES ON EARTH



Observing Regional Ocean Conditions
In the Southeastern United States



Cooperation, Collaboration, and Partnerships are the Foundation
of the Fishery Ecosystem Plan and Comprehensive Ecosystem
Amendment supporting the Evolution to Ecosystem-Based
Fishery Management in the South Atlantic Region



Nicholas School of the Environment
and Earth Sciences at Duke University



Albemarle-Pamlico
national estuary program



UNCW
UNIVERSITY OF NORTH CAROLINA WILMINGTON
CENTER FOR MARINE SCIENCE



Fishery Ecosystem Plan and Comprehensive Ecosystem Amendment

Public Comments Accepted two doors
down.