



JOINT MEETING OF THE LAW ENFORCEMENT COMMITTEE AND ADVISORY PANEL

Jekyll Island, GA
March 2010

Overview

- ◆ Background on waypoints issue for Coral HAPCs
- ◆ NE Region
- ◆ NW Region
- ◆ SAFMC Internet Mapping System
- ◆ Snapper Grouper 17A alternatives

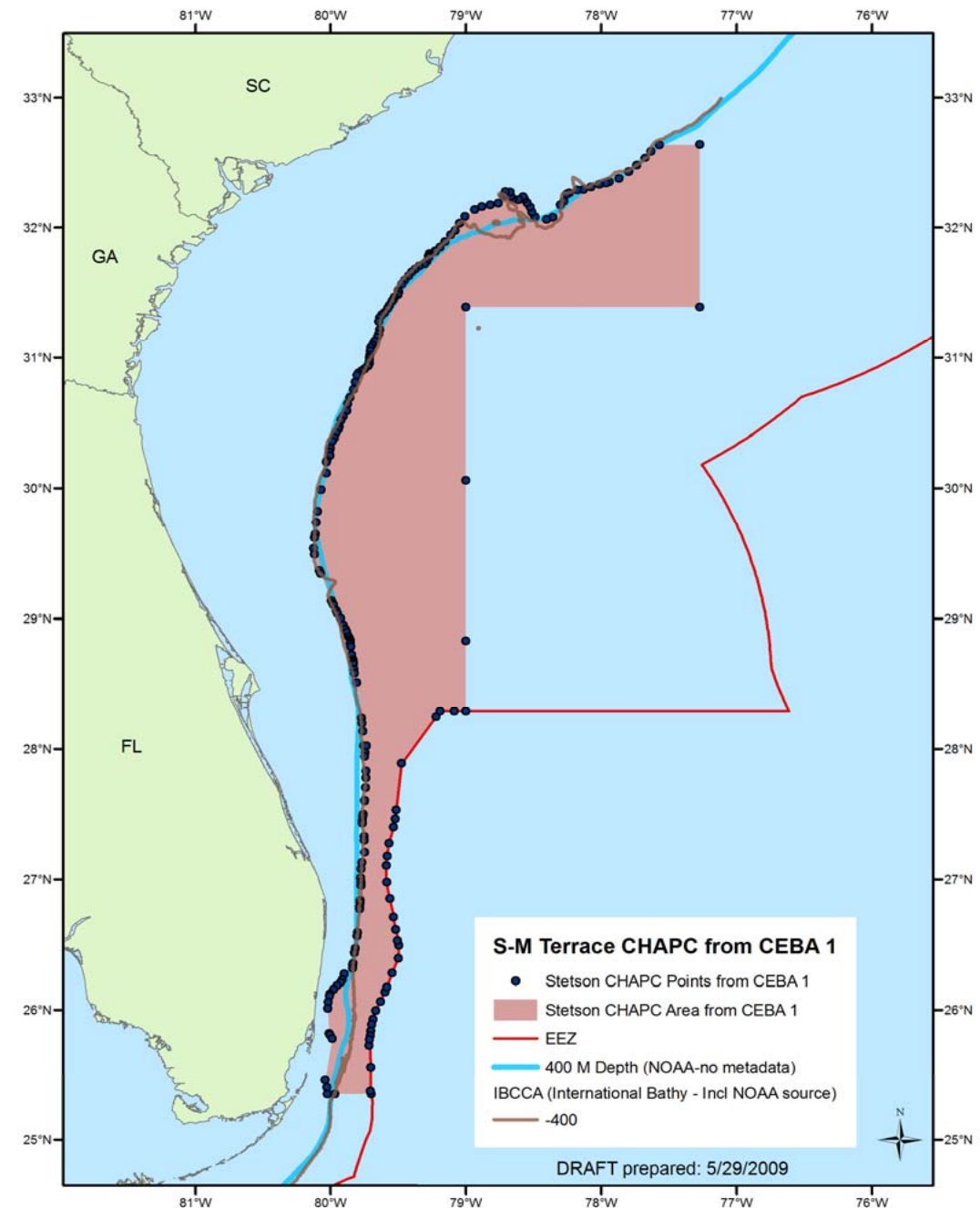
Stetson Miami Terrace CHAPC Coordinate Simplification Issue

- Spring 2009 – NOAA OLE indicated that the 220-waypoint boundary created an enforceability issue.
- June 2009 -- SERO presented 60-waypoint and 19-waypoint alternatives to Council.
- Council chose not to make any changes but recommended consultation with APs and NGOs to consider minimizing the number of waypoints.

- August 2009 – LEAP recommended that the Council present SERO's 19-point alternative to other APs for consideration.
- September 2009 – CE-BA 1 approved for submission to Secretary.
- December 2009 – NOA for FEIS published on December 11. Comment period ended January 11, 2010.
- February 2010 – NOA for Amendment and Proposed Rule pending

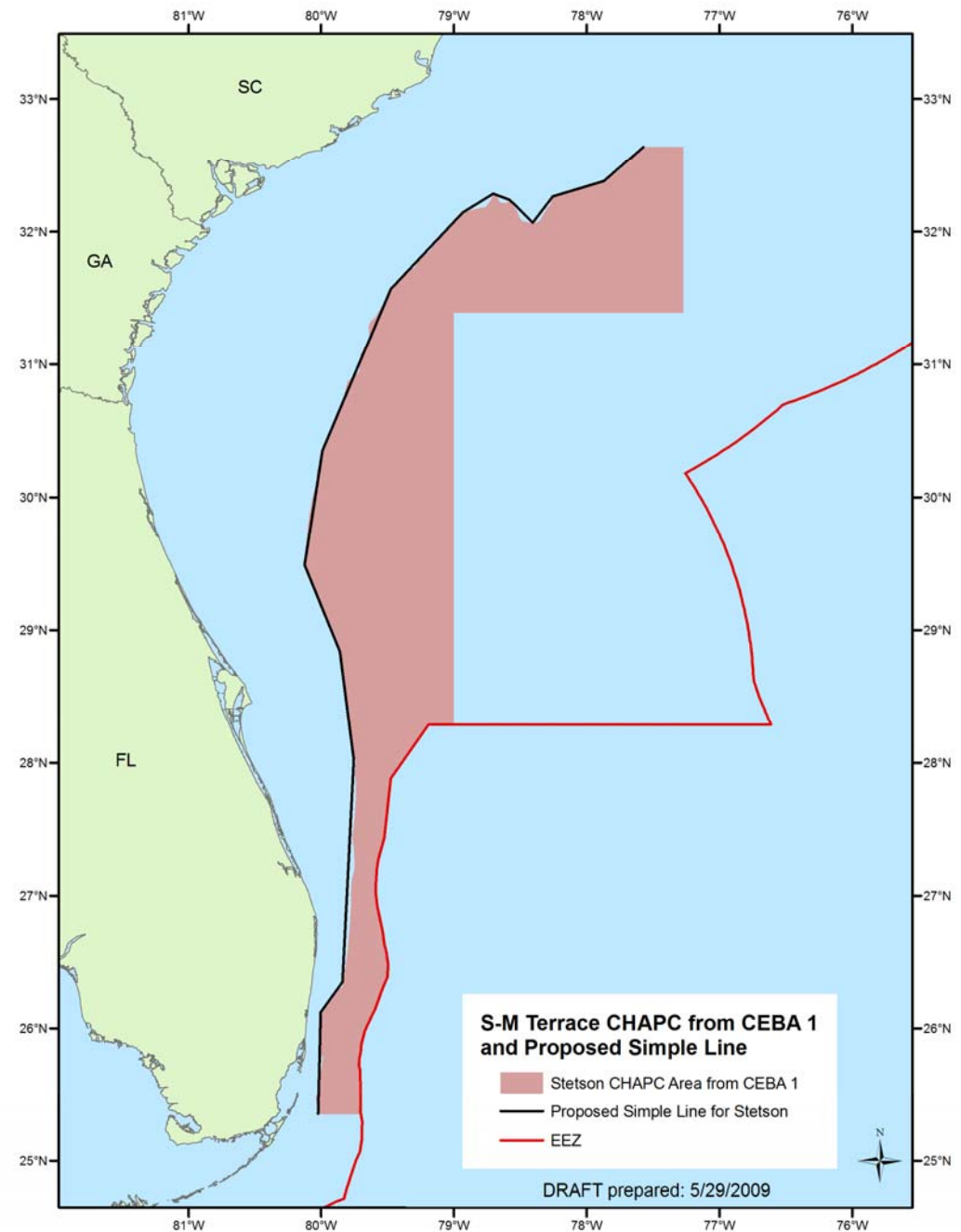
Original 220-point boundary

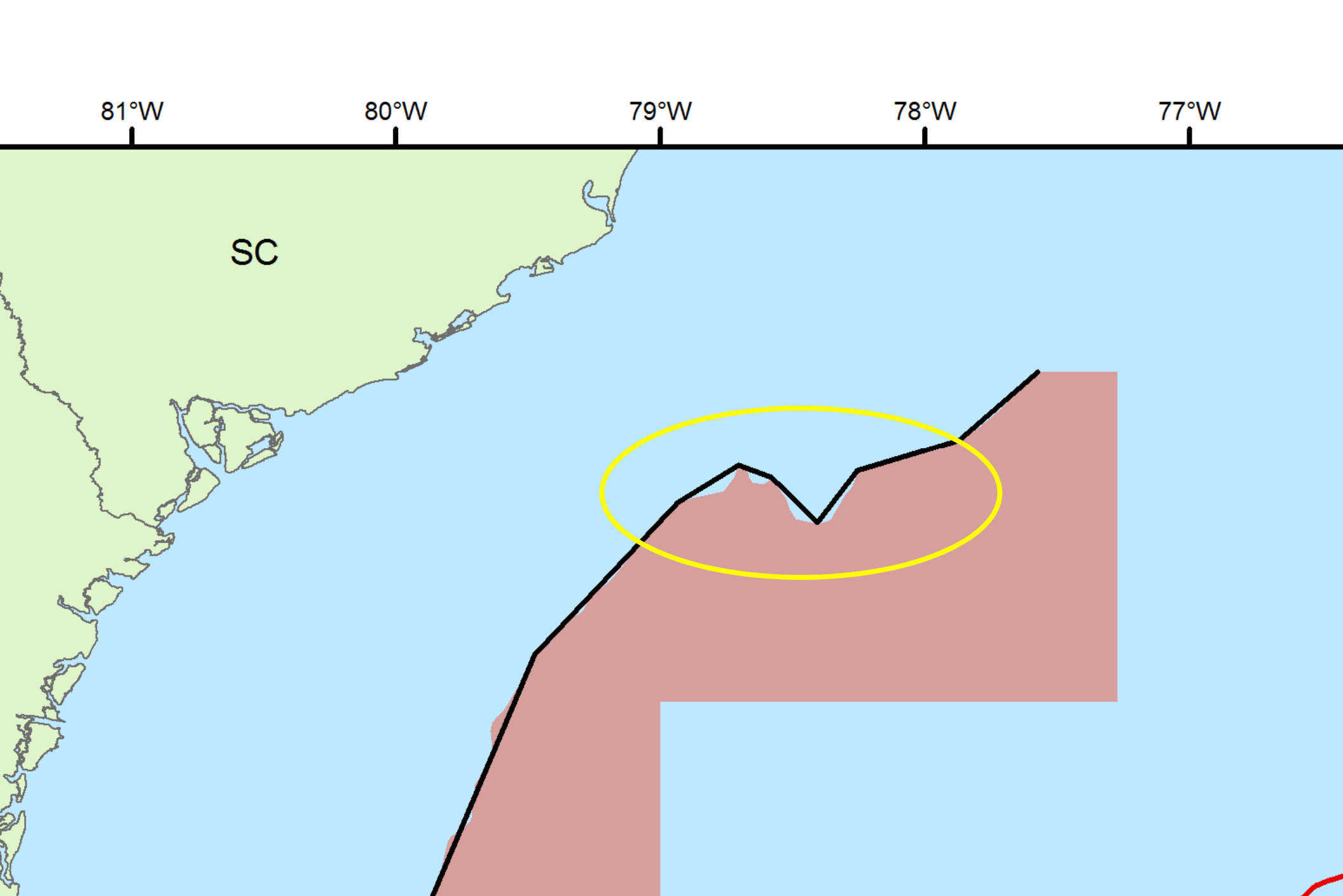
Points along the EEZ were removed after June 2009 meeting

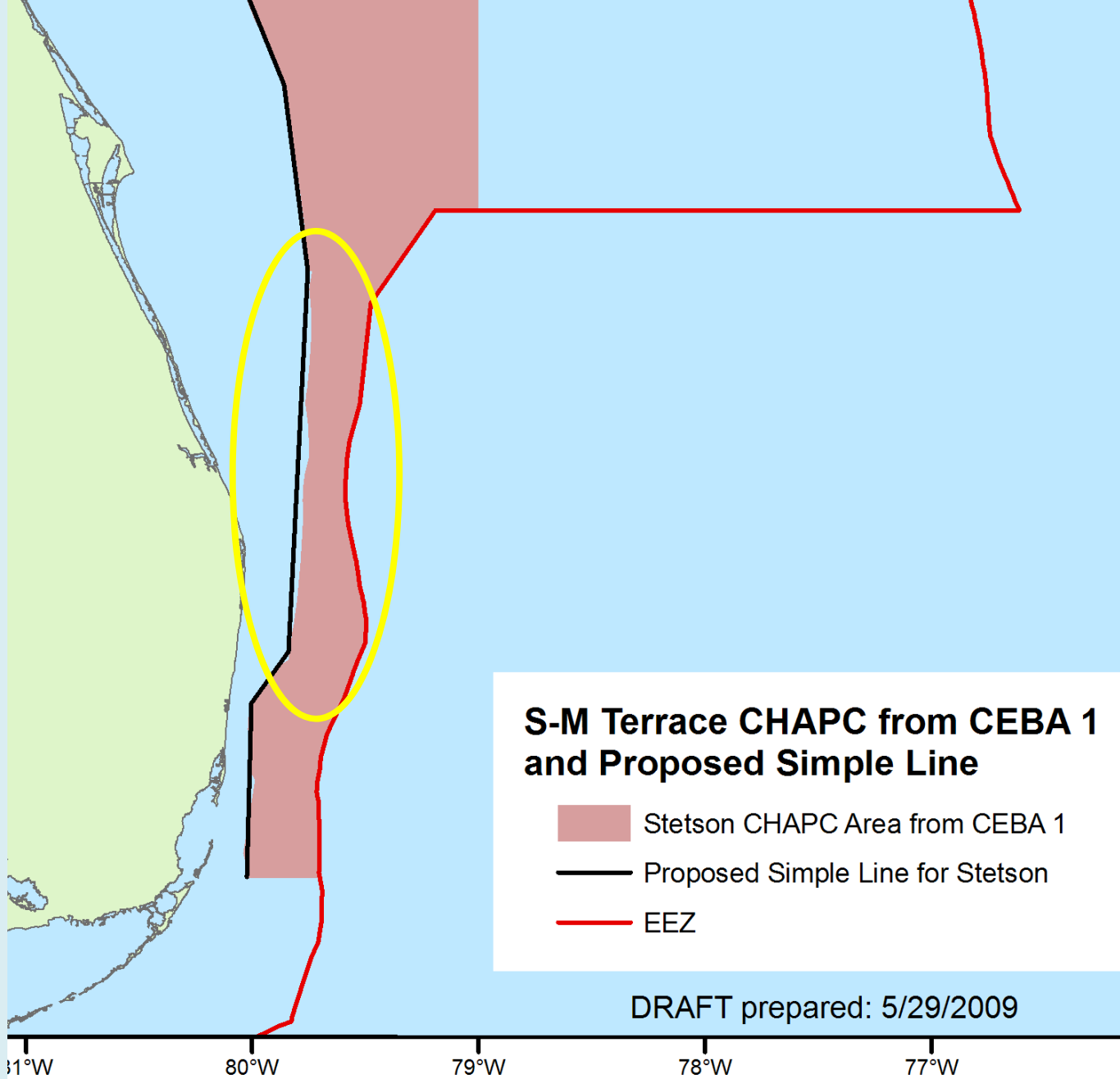


Proposed 19-point line
deviates from original

Loss and gain of habitat,
especially to North and
South







Northeast Region

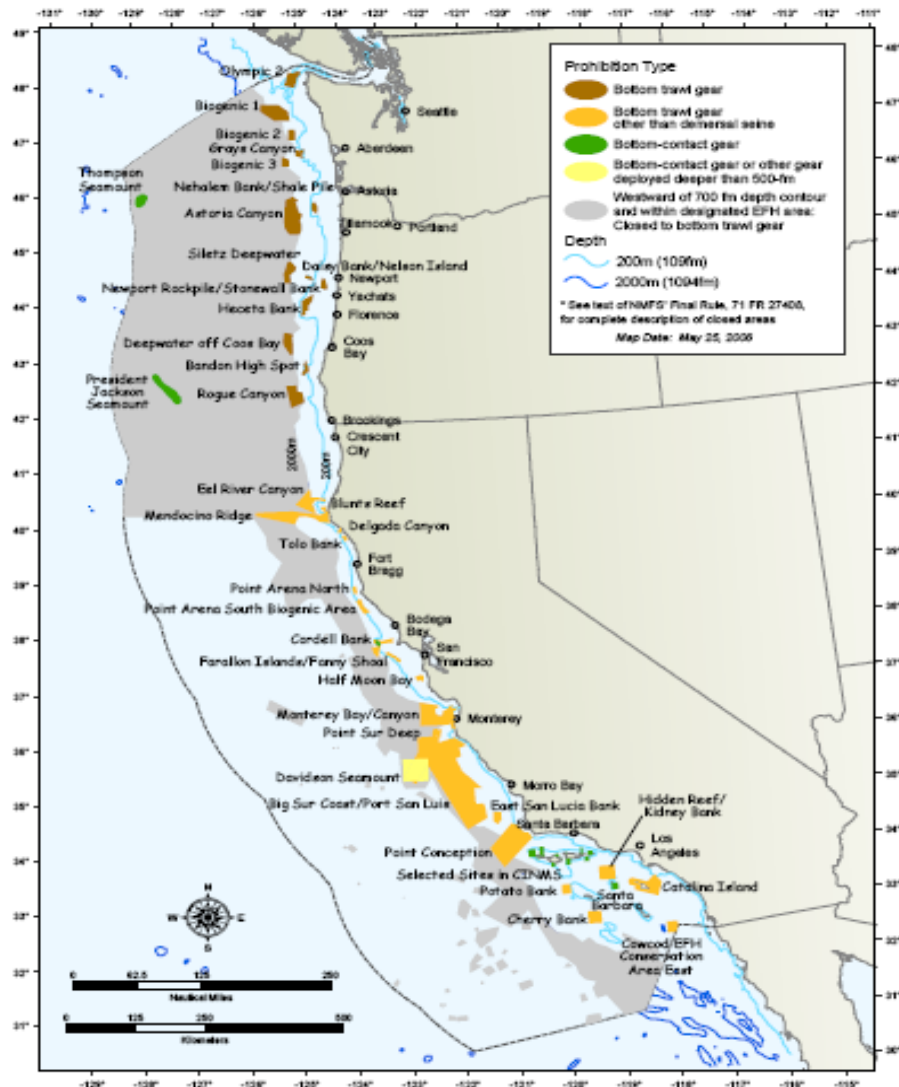
- Several area closures whose boundaries are defined by multiple waypoints (i.e., Sea Scallop Harvest Areas).
- **Vessels are required to carry VMS.**
- NOAA Fisheries staff develops shapefile and provide to VMS office. The GIS information is entered into the VMS system by a contractor.
- Enforcement of closed areas is effective and cases have been made based on VMS information.

Northwest Region

- In 2002 Rockfish Conservations Areas were established and discussions about expanding the number of areas took place.
- The Council approved establishing two closed areas (rectangular polygons with few waypoints) and agreed to establish additional areas contingent on a VMS requirement for the limited entry fleet. The Council formed an Ad Hoc VMS Committee.
- NMFS, in consultation with the Council and the Ad Hoc VMS Committee, prepared an EA for a pilot VMS program for 2003.

- **VMS was implemented in 2004 for the limited entry fleet.**
More RCAs were established thereafter, including the depth-based closures defined by hundreds of waypoints (i.e., 125 fm contour defined by 350 points).
- VMS program has since been expanded for the open access portion of the fishery (*Attachment 2*).
- There are different closures for rec and commercial sectors. Recreational vessels are not required to carry VMS but they do not operate in the same areas as the commercial fleets.
- Coordinates are now available online in comma-delimited files that can be downloaded into a vessel's GPS system

Pacific Groundfish Closed Areas



EFH area closures to protect Pacific Coast groundfish habitat - Coastwide.

Boundary	Number of
Samples	Coordinates
Depth Contours	Canada to Mexico
• 20fm (37m)	112
• 30fm (55m)	333
• 40 fm (75m)	212
• 50 fm (91m)	195

(Note: hundreds of of additional pages of published coordinates for Closed Areas including EFH Closures)

Monument is the single largest area in the US and one of the largest marine conservation areas in the world, covering 139,797 square miles around the Northwestern Hawaiian Islands, an area larger than all of our national parks combined.

th Pacific Ocean

Midway Islands

Pearl and Hermes Atoll

Naifeh Seamount

Lisianski Island

Laysan Island

Maro Reef

Gardner Pinnacles

Tamana Seamount

French Frigate Shoals

Necker Island

Nihoa Island

Honopu Canyon

◆ Base 148

◆ Nihoa Island SPA 368

◆ Ecological Reserve 62

(23 pages of additional coordinates)

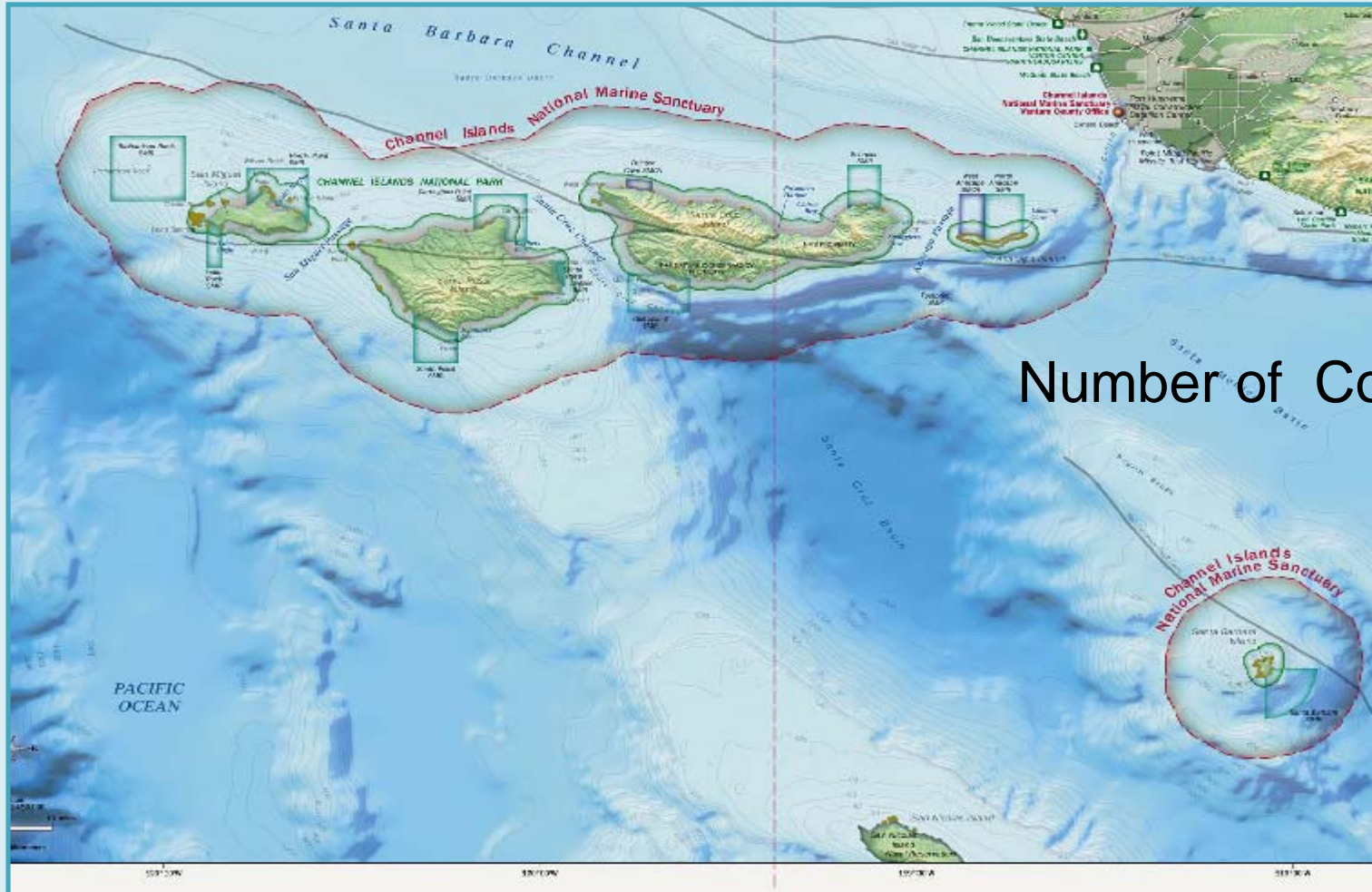
NWHI National Monument

Hess Tablemount

Watkins Seamount

Seafloor Watch

Channel Islands National Marine Sanctuary



Number of Coordinates: 113

Habitat and Ecosystem IMS



South Atlantic Fishery Management Council

Habitat and Ecosystem Section



Home - About Us - Ecosystem Management - Habitat Management - Ecosystem Library

Friday, February 19, 2010

...: Ecosystem Management » Ecosystem Boundaries » Mapping and GIS Data ...

Search

Login

Quick Links

[Regulations by Species](#)
[Council Meetings](#)
[NMFS Permits](#)
[Fishery Management Plans](#)
[Stock Assessments \(SEDAR\)](#)
[Mapping/GIS](#)
[Deepwater Coral \(Lophelia and Oculina Bank\)](#)
[Marine Protected Areas](#)
[Protected Resources](#)
[Ocean Observing Systems](#)
[Limited Access Privileges](#)

Geographic Information Systems

In cooperation with the Florida Fish and Wildlife Research Institute, the Council has developed an Internet Map Server (IMS) to provide access to spatial data, imagery, videography and documents related to coral and other habitats of the South Atlantic ecosystem including Essential Fish Habitat and Essential Fish Habitat -Habitat Areas of Particular Concern. The IMS is a living repository of historic and current information to be used by the general public, recreational and commercial fishermen, researchers and resource managers.

This project is ongoing and incorporates GIS data from a variety of federal, state, academic and private sources. Example datasets include fish and habitat distributions (MARMAP/SEAMAP), environmental sensitivity indexes (NOAA ESI), deepwater coral (Oculina and Lophelia), proposed deepwater marine protected areas (MPA), special management zones (SMZ) and artificial reefs. The IMS also serves video and still imagery of coral reefs providing users a unique opportunity to observe coral health, abundance, and habitat dynamics in the South Atlantic region.

Users may access the "[GIS Data](#)" page which provides a short description of each layer with links to metadata and zipped shapefiles for download. Many GIS data layers served through this application have also been converted to Google Earth KMZ files for easy viewing within the free Google Earth viewer.

South Atlantic Habitat and Ecosystem Internet Map Server



[Start the map server application](#)

Note: Please allow pop-ups on this site for this application to function correctly.

Visit our [Map Catalog](#) for downloadable ready-made maps.

The information is FGDC compliant and presented in formats accepted in GIS community.

- View and download maps of existing and proposed managed areas including Deepwater CHAPCs, MPAs, etc.
- Downloadable Arc GIS Shapefiles, KMZ files (viewable in Google earth), and tables of coordinates
- Existing and proposed regulations are also provided through a new ArcGIS Service - SAFMC Regulations

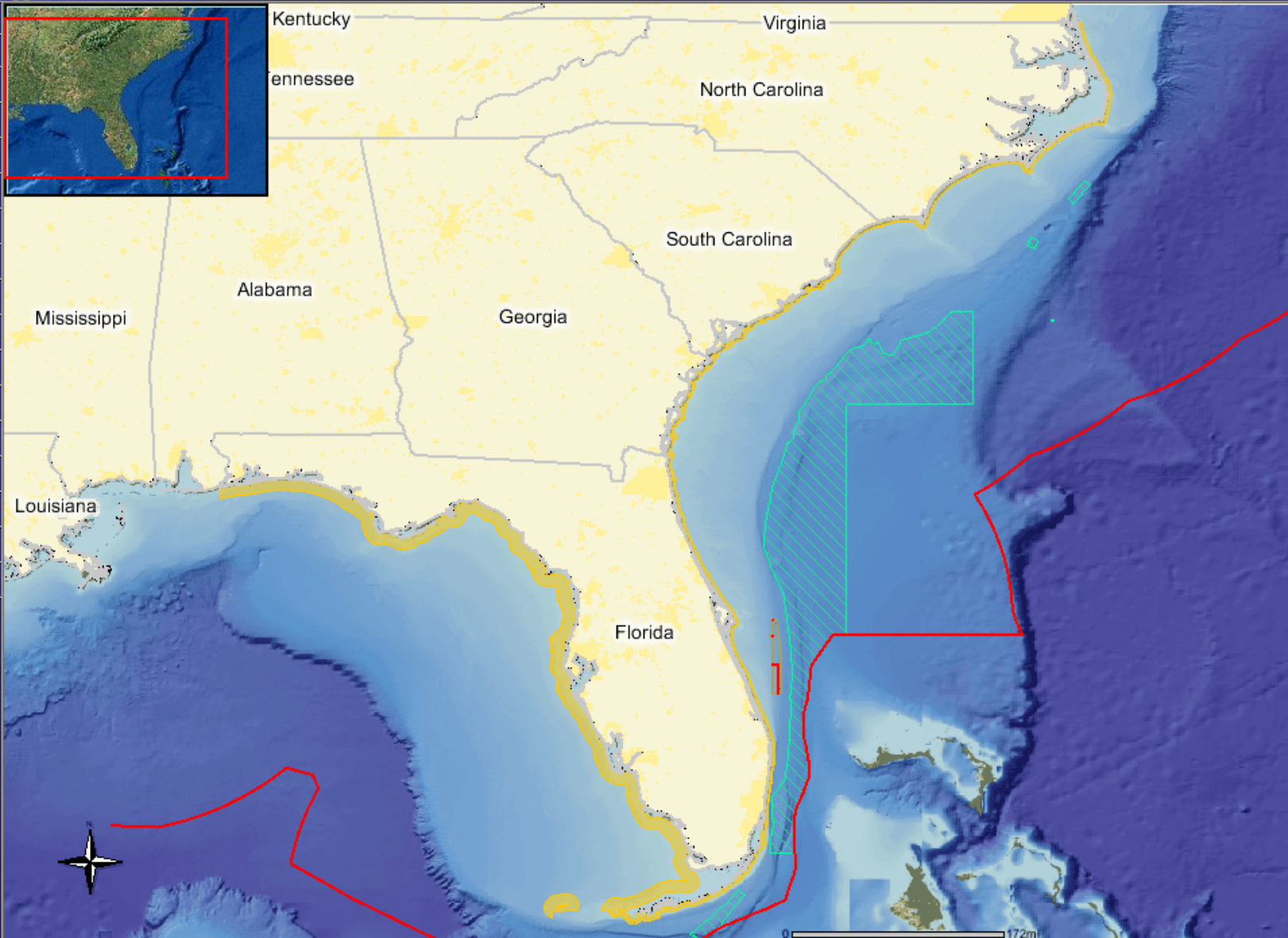
South Atlantic Habitat and Ecosystem IMS

An integrated approach for management and research

[SAFMC](#)

[FWC FWRI](#)

- Legend
- Zoom In
- Zoom Out
- Zoom Full Extent
- Zoom Active Layer
- Zoom Last Extent
- Pan
- Hotlink
- Identify
- Query
- Find
- Buffer
- Select By Rectangle
- Select By Line/Polygon
- Clear Selection
- Print
- Download



Legend Refresh Map Layers GIS Data

- Legend
- State Boundaries
- Exclusive Economic Zone
- State Waters
- Oculina HAPC Boundaries
- Proposed Deepwater Lophelia Coral HAPCs
- Cities and Places
- States - Land Shading
- 3D Bathymetry Image

South Atlantic Habitat and Ecosystem IMS

An integrated approach for management and research

SAFMC

FWC FWRI

- Legend
- Zoom In
- Zoom Out
- Zoom Full Extent
- Zoom Active Layer
- Zoom Last Extent
- Pan
- Hotlink
- Identify
- Query
- Find
- Buffer
- Select By Rectangle
- Select By Line/Polygon
- Clear Selection
- Print
- Download

Query/Selection Results - Windows Internet Explorer

http://ocean.floridamarine.org/efh_coral/ims/displayAttributeData.htm

Alternative 3D Bathy

Rec	OBJECTID	ID	PERIMETER	AREA	ACRES	HECTARES	NAME	SQ_MILES	#SHAPE#	#ID#
1	1	0	971581.74538	16990736593.9	4198502.44744	1699073.65939	Red Snapper Alternative 3D (Bathy)	6560.16007	[polygon]	1

Waiting for http://ocean.floridamarine.org/efh_coral/ims/displayAttributeData.htm

Internet

100%

Provides user ability to create and view maps showing exiting and proposed managed areas simultaneously. Also user can use identify function to show estimates of area in square miles

- Legend
- Refresh Map
- Layers
- GIS Data
- Help
- Alternative 4C Bathy
- Alternative 4C General
- Alternative 4D Bathy
- Alternative 4D General
- SFAA_1
- SFAA_2
- SFAA_3
- SFAA_4
- Crab_A
- Crab_B
- Crab_C
- Crab_Northern
- Crab_Southern
- Logbook Catch Grid
- 240ft Bathymetric Contour
- SAFMC Essential Fish Habitat
- Marine Sanctuaries
- MARMAP Data
- Unique Habitats
- Coral HAPCs
- Oculina Experimental Closure
- Oculina HAPC Boundaries
- Oculina Multibeam
- Oculina Benthic Habitats
- Oculina Videos
- Oculina Dives
- Proposed Deepwater Logbook
- SEAMAP Bottom Mapping
- General Habitats
- Estuaries
- Imagery
- 3D Bathymetry Image

Refresh Map

☒ Auto Refresh

Legend Help

OGC Backgrounds

Visible

- ☐ MODIS RGB Composite(USF)
- ☐ Optimal Interpolation SST (USF)

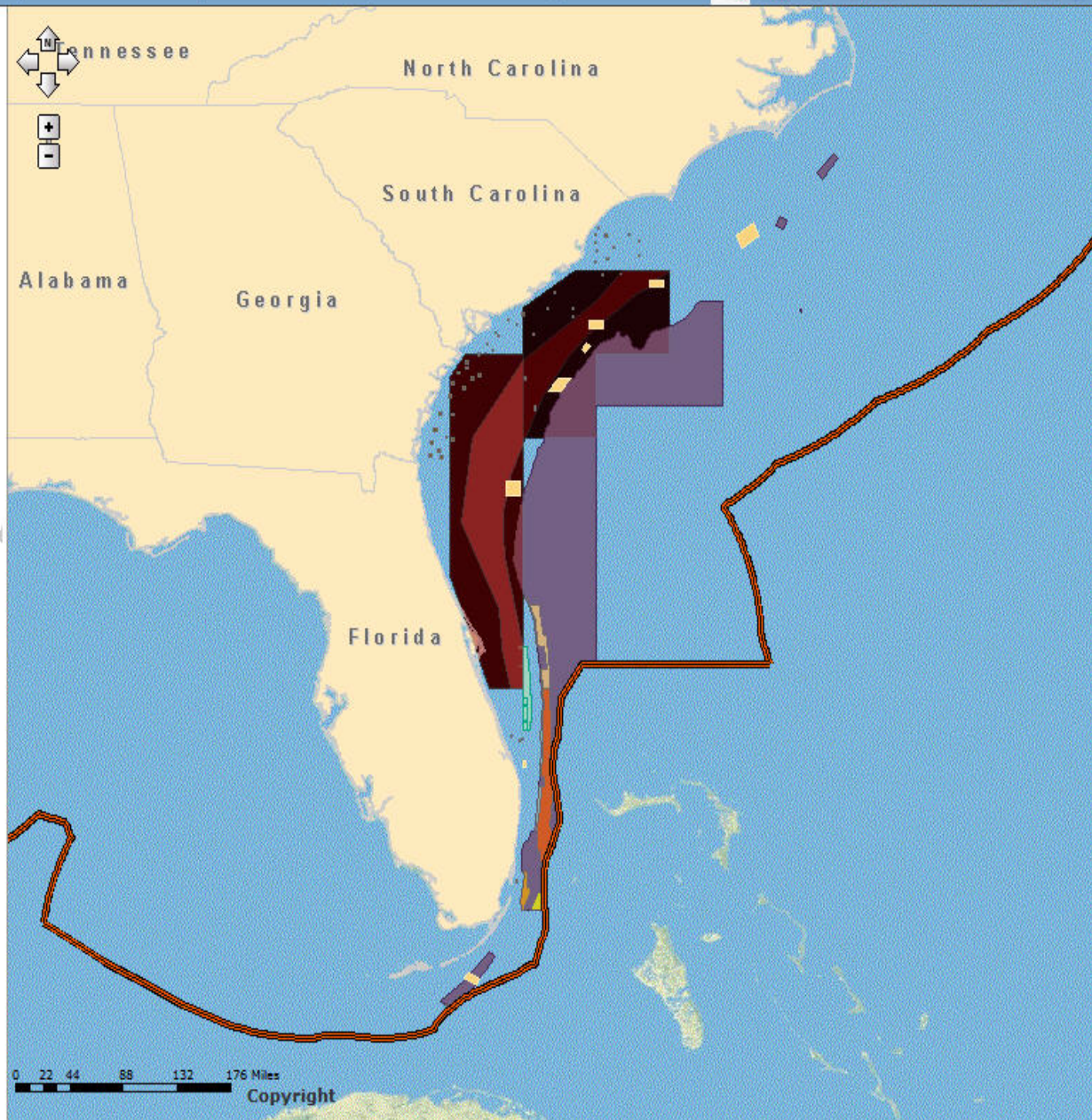
Identify

[Print](#) | [Search SAFMC Regulations](#) | [Search SAFMC Proposed Action](#) | [Search Federal Regulations](#)

Results

Map Contents

- ☒ SAFMC_REGULATIONS_SERVICE
 - ☐ 240ft Bathymetric Contour
 - ☒ Exclusive Economic Zone
 - ☐ Southeast Bathymetry
 - ☒ Marine Protected Areas
 - ☒ Special Management Zones in
 - ☒ SAFMC Proposed Actions
 - ☐ SAFMC Restrictions
 - ☐ ProtectedAreas
 - ☐ National Marine Sanctuaries
 - ☒ Oculina CHAPC
 - ☐ Danger Zones and Restricted
 - ☐ Federal Marine Managed Area
 - ☐ State Seaward Boundary (SS
 - ☒ United States
 - ☐ Logbook Catch Grid
- ☐ ESRI_StreetMap_World_2D
 - ☐ World Street Map
- ☒ Topo Maps
 - ☐ NGS USA Topographic Maps



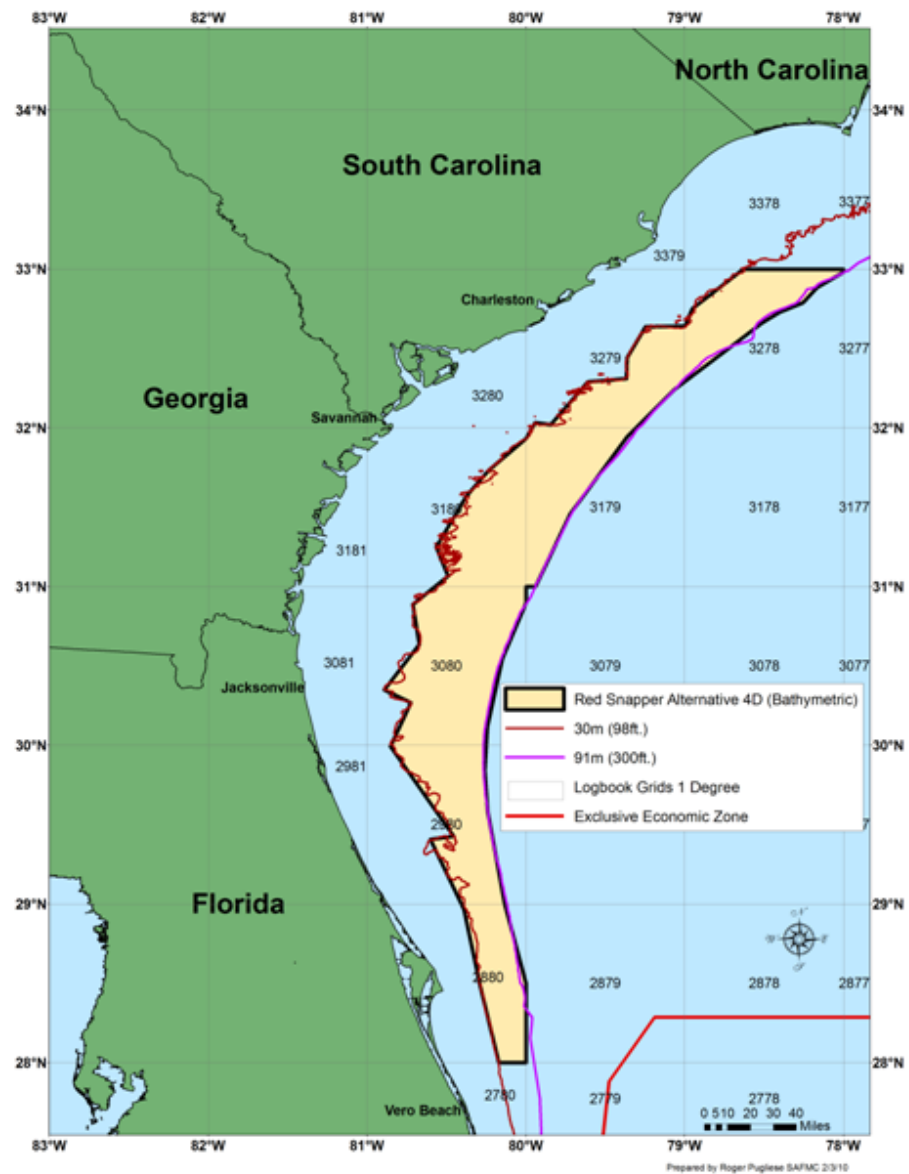


Figure 25. Red Snapper Alternative 4D (98ft-300ft/Bathymetric).

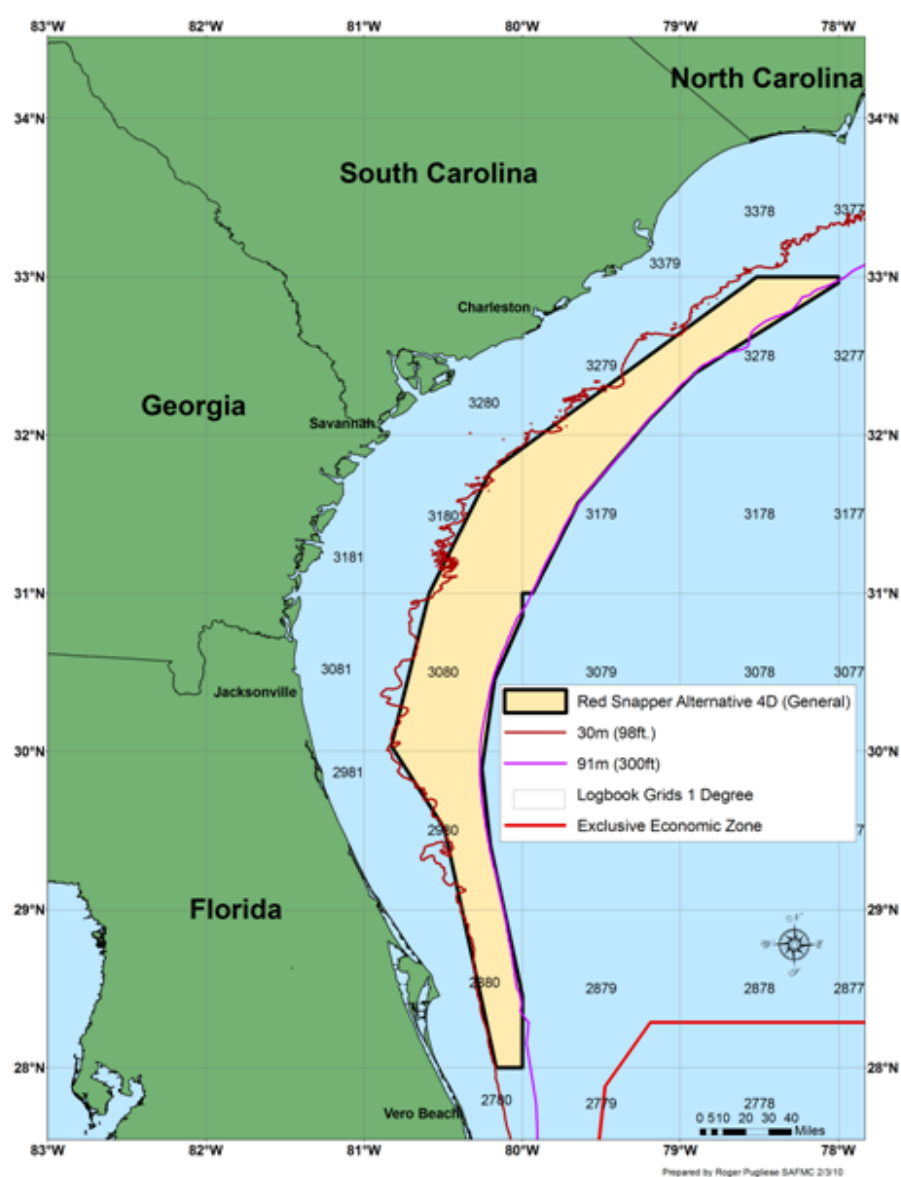


Figure 27. Red Snapper Alternative 4D (98ft-300ft/Generalized).

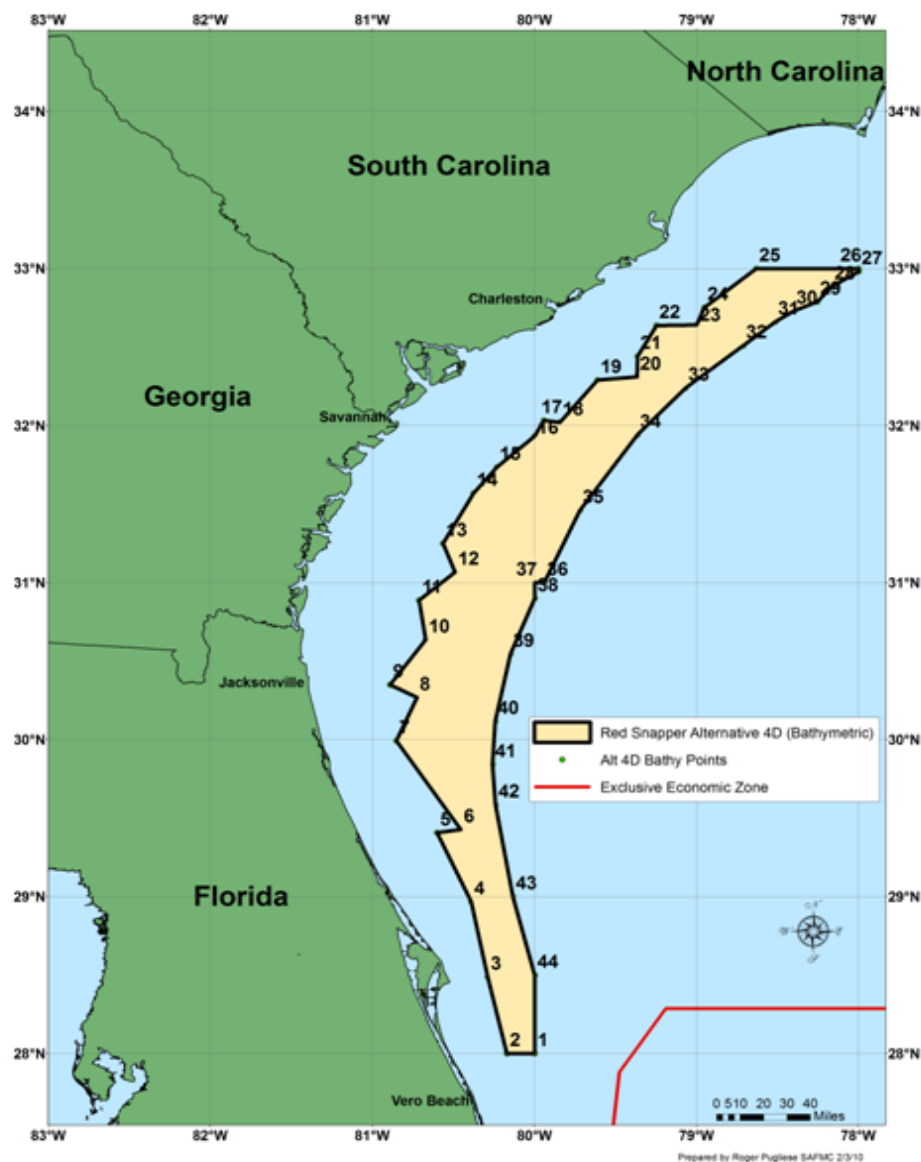


Figure 26. Red Snapper Alternative 4D (98ft-300ft/Bathymetric) with Point Coordinates.

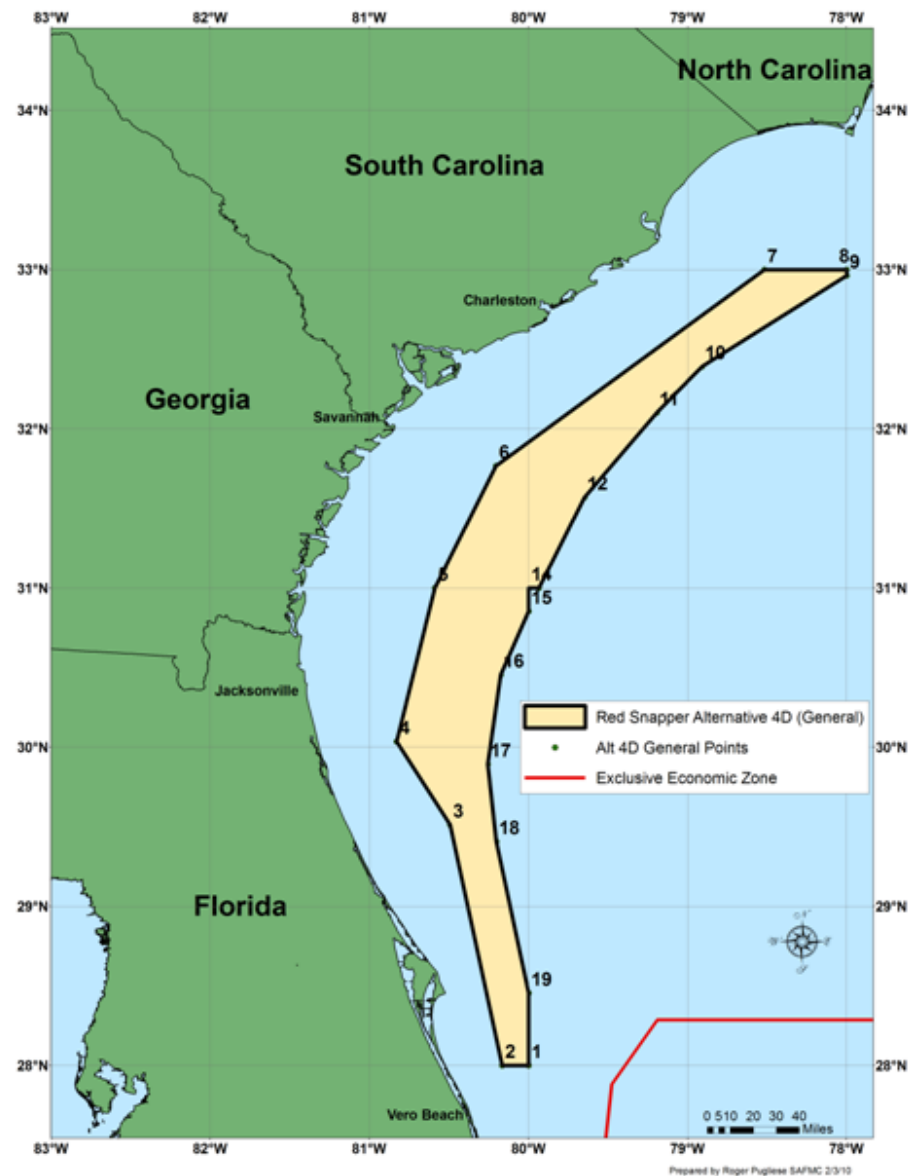


Figure 28. Red Snapper Alternative 4D (98ft-300ft/Generalized) with Point Coordinates.

Comparison between red
snapper alt 4D
bathymetric (green)and
alt 4D general (pink)

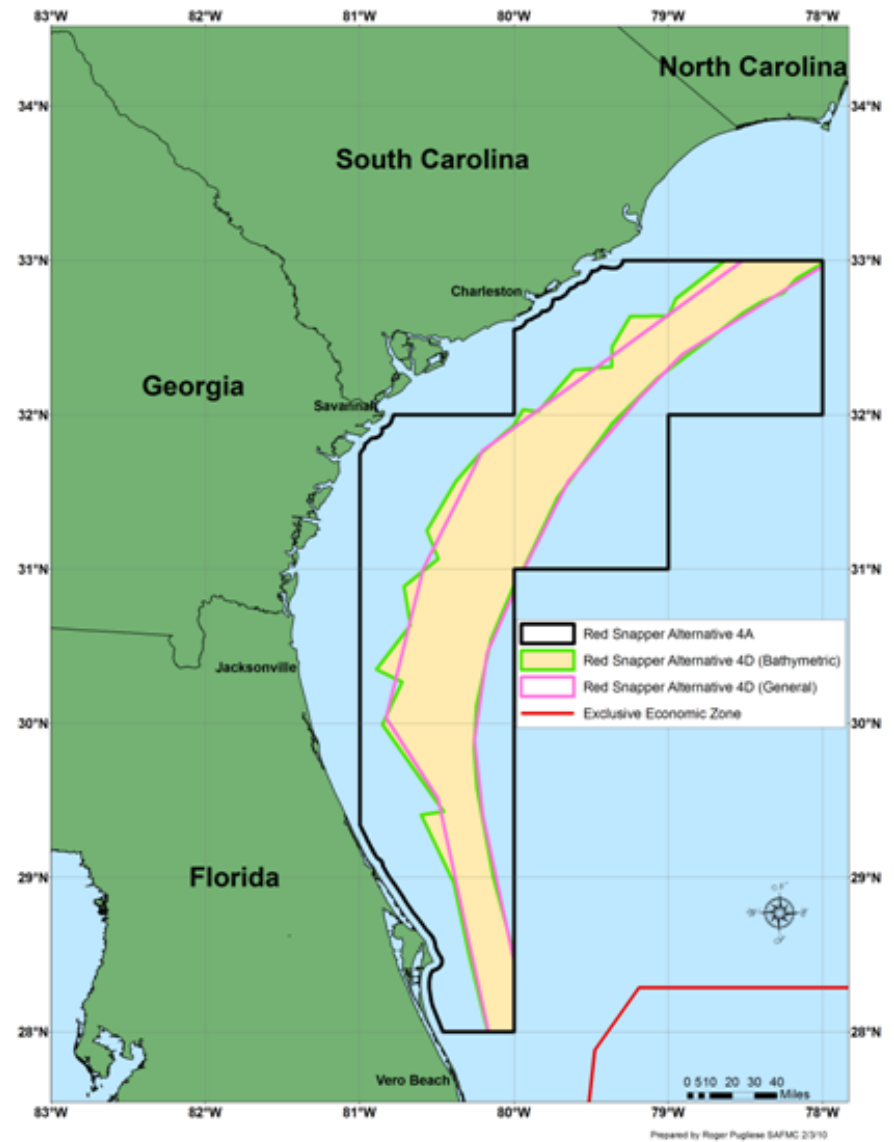


Figure 38. Comparison of Red Snapper Alternatives 4D (98-300ft/Bathymetric) and 4D (98-300ft/General).