



Outreach Update

Oculina Experimental Closed Area Evaluation Plan

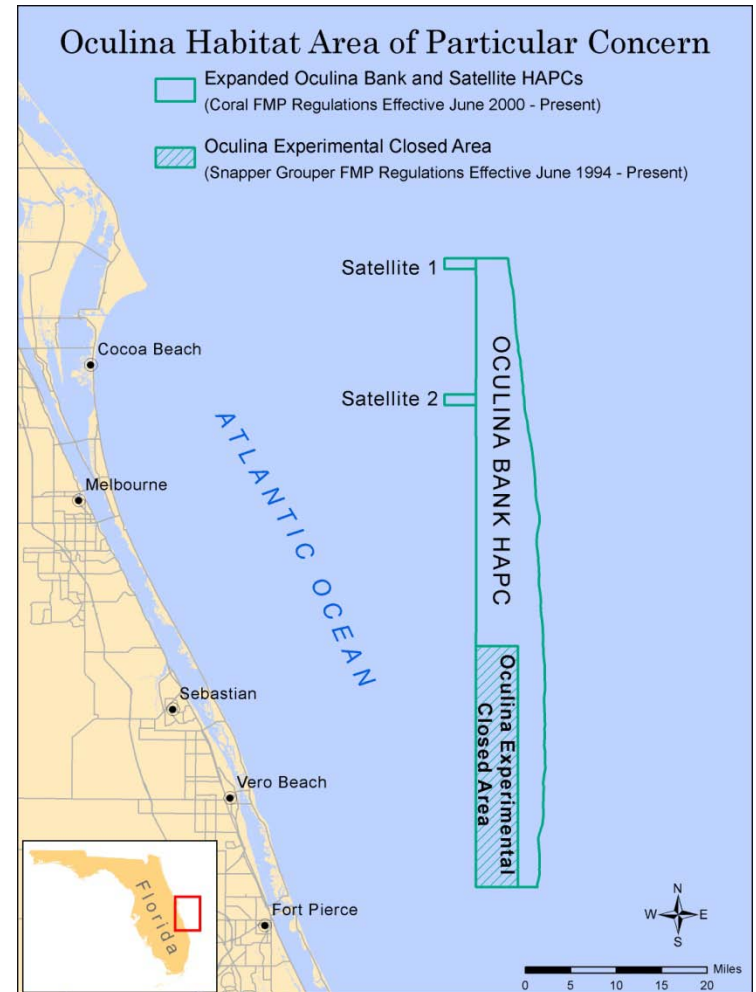
Kim Iverson

December 2013 Council Meeting

Wilmington, NC

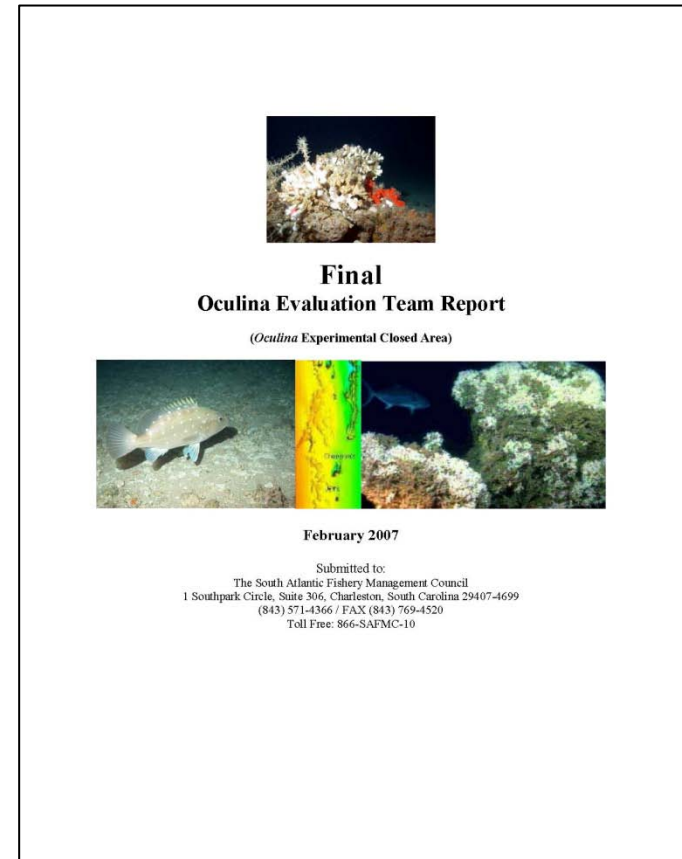
Oculina Bank Experimental Closed Area

- **1984** 92 sq. mi. area designated as EFH – bottom tending gear prohibited
- **1994** HAPC becomes Experimental Closed Area – snapper grouper fishing prohibited
- **1996** Anchoring restrictions expanded and larger area closed to rock shrimp trawling
- **2000** HAPC expanded to 300 sq. mi.
- **2004** ECA extended indefinitely with periodic review



Oculina Bank Experimental Closed Area

- **Amendment 13A:** effective April 26, 2004 required OECA Evaluation Plan that includes:
 - **Outreach**
 - Research and Monitoring
 - Law Enforcement
 - **2007:** Evaluation of Size and Configuration – Oculina Evaluation Team Report
 - **2014:** Re-evaluation of all regulations



Outreach Overview 2004 - 2007

- **2004** – Oculina outreach constituent meetings held in Cape Canaveral and Ft. Pierce
- Informal canvas meetings with area businesses, marinas



2004 Planning Meetings

- Harbor Branch Oceanographic Institute
- NOAA Fisheries
- Port Canaveral Space Authority

Allowed Interaction and Discussion with local:

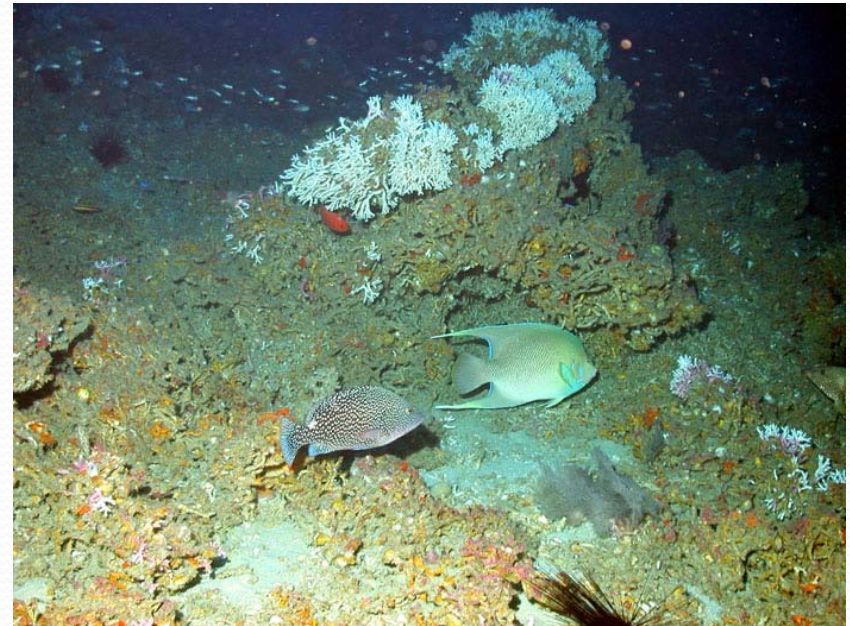
- Scientists
- Outreach specialists
- Managers





Result: Outreach Plan

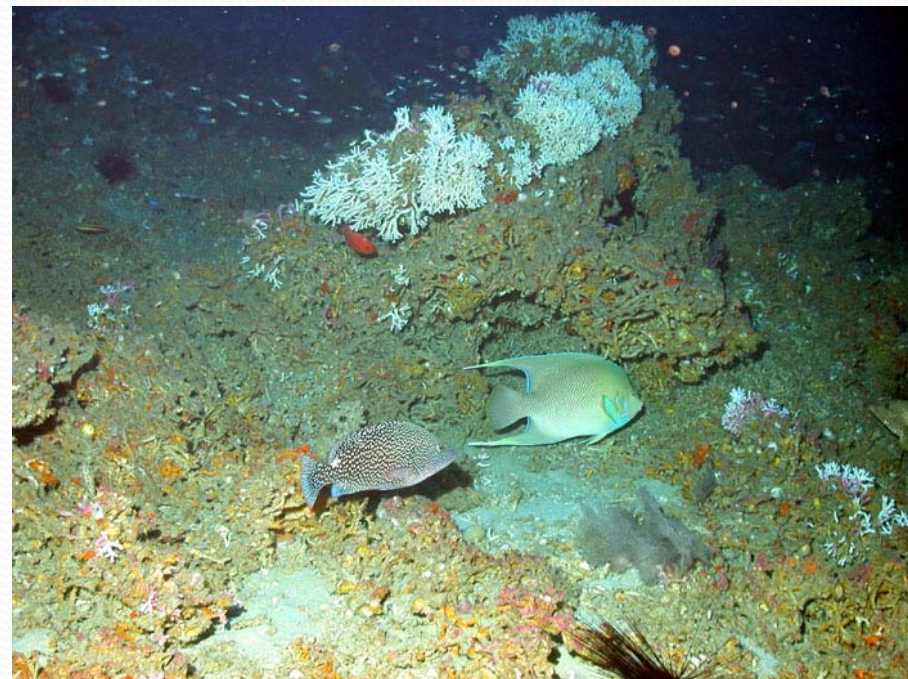
- **Goal:** *Increase awareness and understanding of the OECA to the fishermen, citizens, and visitors of central eastern Florida and the U.S. Public.*
- **Objectives**
 - Assist in development of OECA Evaluation Plan
 - Campaign targeting fishermen
 - Broader media campaign through partnerships
 - Evaluation





OECA Outreach Plan

- **OECA Evaluation Plan**
completed in 2005
- **Approach**
 - Objective 2: focus campaign Council initiated projects
 - Partnership projects



Council Initiated Projects

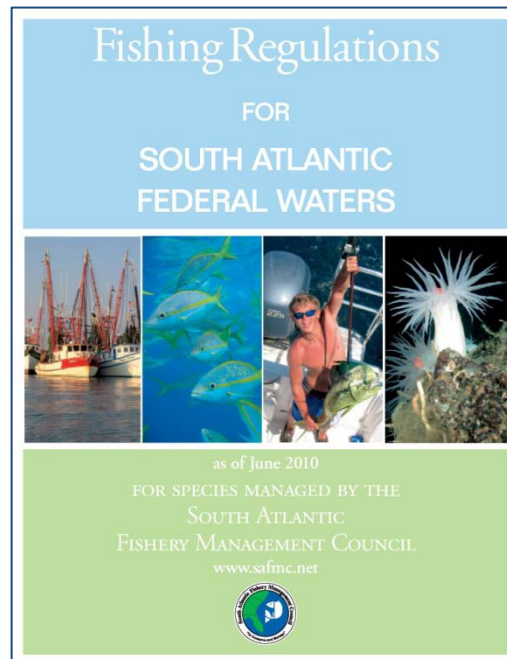
Objective 2: Campaign targeting fishermen

1. Reprint SAFMC Regulations Brochure
2. Work with fishing chart manufacturers
3. Partner with FWC for publications, mailings
4. News releases
5. Develop powerpoint presentation
6. Oculina poster and rack cards



Project 1: Regulation Brochures

- *SAFMC Federal Fishing Regulations* reprinted in 2007 – 40,000 copies distributed.



Managed Areas/Oculina Bank and SMZs

Oculina Bank/Managed Areas

The Oculina Bank
Oculina varicosa, or ivory tree coral, is distributed along the South Atlantic shelf with concentrations occurring off the central east coast of Florida. The deepwater form of this species provides essential habitat to numerous fish species including many managed under the Snapper Grouper Fishery Management Plan.

The Oculina Bank, located approximately 15 nautical miles off the coast of Ft. Pierce, Florida has been designated a Habitat Area of Particular Concern (HAPC) by the Council. Restrictions are in place to protect fragile *Oculina* coral found in the area. Within the HAPC is an Experimental Closed Area with further restrictions to provide protection of snapper grouper populations and associated *Oculina* coral.

Habitat Area of Particular Concern (HAPC):
Coordinates
 The Oculina Bank HAPC encompasses an area bounded on the north by 28°30' N., on the south by 27°30' N., on the east by the 100-fathom (183-meter) contour, as shown on the latest edition of NOAA chart 11460, and on the west by 80°00' W. long.

Restrictions
 In the HAPC, no person may:
 1. Use a bottom longline, bottom trawl, dredge, pot or trap.
 2. If aboard a fishing vessel, anchor, use an anchor and chain, or use a grapple and chain.
 3. Fish for rock shrimp or possess rock shrimp in or from the area on board a fishing vessel.
 4. Possess *Oculina* coral.

Special Management Zones
 In the Council's Special Management Zone (SMZ) program, a person or agency possessing a Corps of Engineers permit for any artificial reef or fish attraction device for other modification of habitat for the purpose of fishing may request that the Council designate the modified area and an appropriate surrounding area as an SMZ. This zone may prohibit or restrict the use of specific types of fishing gear that are not compatible with the intent of the permittee for the artificial reef or fish attraction device.

Oculina Habitat Area of Particular Concern
 Expanded Oculina Bank and Satellite HAPCs (Over 100' Depth Line June 2010 - Present)
 Oculina Experimental Closed Area (Snapper Grouper FMP Regulations Effective June 1984 - Present)

Experimental Closed Area Inside the HAPC:
Coordinates
 Located within the Oculina Bank HAPC, the experimental closed area is bounded on the north by 27°53' N., on the south by 27°30' N., on the east by 79°56' W., and on the west by 80°00' W. This area is designed to aid in the protection of snapper grouper species and their associated habitat, while providing researchers with an area to describe the effects of prohibiting fishing for snapper grouper species and the characteristics of an unfished resource area protected from habitat damage.

Restrictions
All restrictions within the HAPC apply. In addition, no person may fish for snapper grouper species in the area or retain snapper grouper in or from the area. Any snapper grouper taken incidentally by hook-and-line gear must be released immediately by cutting the line without removing the fish from water.

Visit www.safmc.net for more information.

Offshore artificial reef deployment off of South Carolina

Regulation Information

- Inclusion in Deepwater MPA Brochure
- 2013 Smartphone Regulations App with Oculina Bank Regulations

Know Before You Go!



Photo: Richard DeLizza

FREE South Atlantic Federal Fishing Regulations App

*Heading offshore to fish in the South Atlantic region?
Don't get caught without the latest regulations.*

Download your free App today!

Includes both commercial and recreational federal fishing regulations

To download the SA Fish Regs App, use one of the free QR Code Reader Apps available in App Stores to scan the appropriate QR code below or search for "SA Fish Regs" in either App store.



ANDROID
available in
Google Play Store

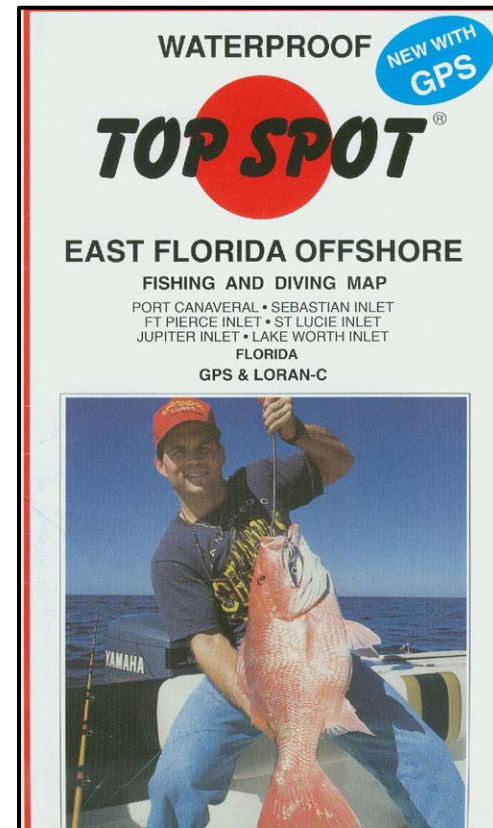


iPhone/iPad
available in
Apple Store



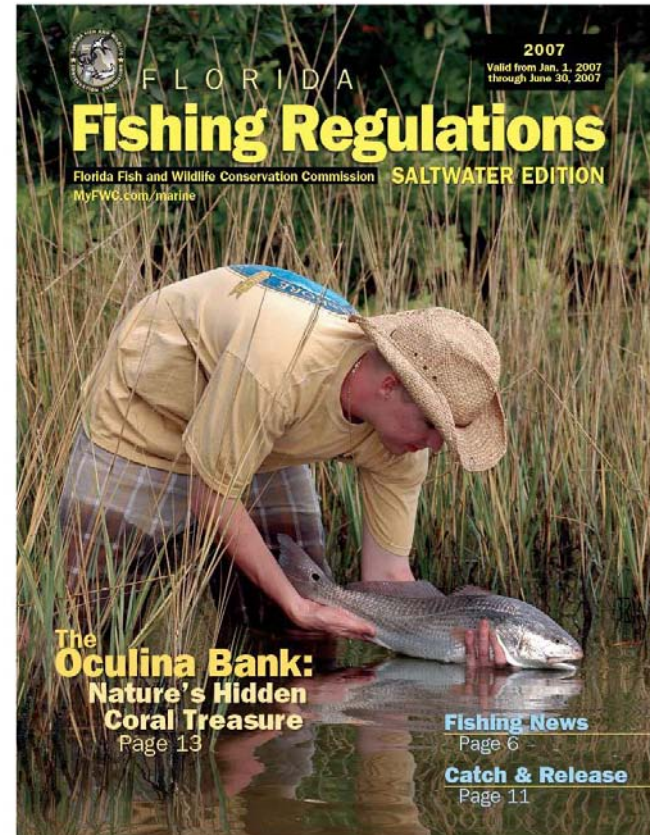
Project 2: Fishing Charts

- Contacted local chart manufacturers and improved references to OECA on printed charts.
- Need: Follow up with electronic chart manufacturers.



Project 3: Work with FWC

- Feature article in 2007 FWC Saltwater Fishing Regulations
- Need: Follow up with additional feature articles.



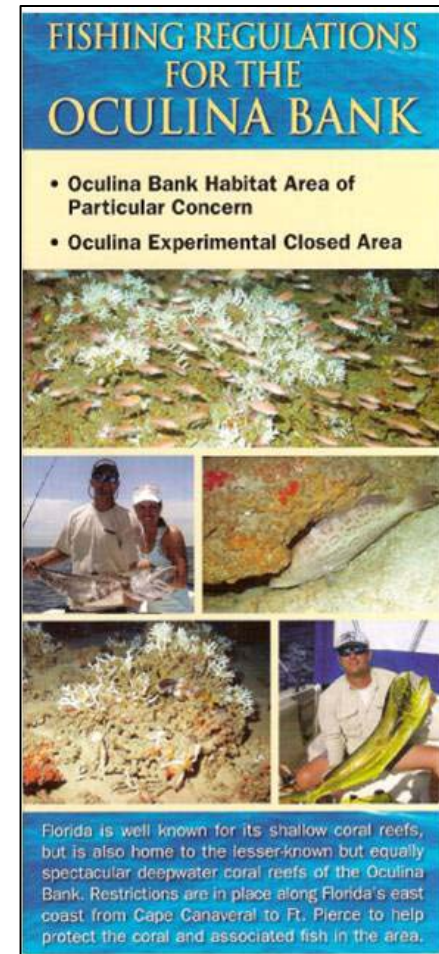
Projects 4 and 5: News Releases and Powerpoint Presentation

- News releases following Council action and media stories associated with research and monitoring
- Newsletter articles on research and law enforcement activities
- Need: Additional releases and articles and Powerpoint presentation



Project 6: Rack Cards and Poster

- Over 10,000 copies of the rack cards have been distributed:
 - Area marinas, businesses
 - FWC and NOAA OLE Enforcement offices
 - Smithsonian Marine Station
 - Public hearings and Council meetings
 - Available for download





Partnership Projects

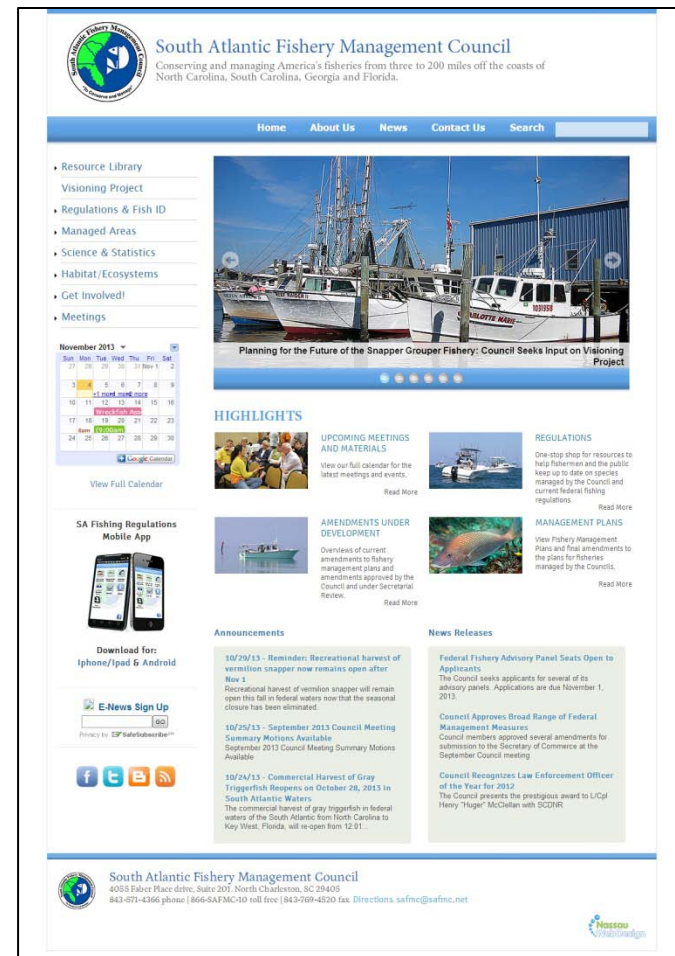
Objective 3: Broader media campaign with partners

- NOAA Undersea Research Center – UNC-W
- NOAA Fisheries
- Harbor Branch Oceanographic Institute
- FL Fish & Wildlife Commission
- Smithsonian Marine Station



Joint Project 1: Website Development

- Oculina Bank information was added to the SAFMC website
- HBOI@Sea website
- NOAA Teacher@Sea
- New SAFMC website includes Oculina information
- Need: Continue updates



Joint Project 2: Educational Products for Teachers

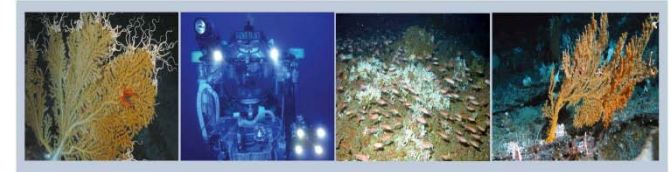
Deepwater Coral Teacher Workshops

- **2005 Teacher Workshop**
 - NOAA, HBOI, NURC and SAFMC
- **2007 DW Coral Teacher Workshop**
 - NOAA led workshop
- **2008 Teacher Workshop** – built upon earlier workshop materials and partnerships.



2008 Teacher Workshop

- Held at HBOI and Smithsonian Marine Station
- Scheduled in conjunction with scheduled research cruise
- Included tour of Smithsonian Marine Station
- Materials available online



2008 South Atlantic Deepwater Coral Teacher Workshop

Saturday, April 19th
Harbor Branch Oceanographic Institute
at Florida Atlantic University
Ft. Pierce, Florida



Joint Project 4: Portable Exhibit

- Developed in 2009
- Includes kiosk and video monitor – “Revealing the Deep” film featured
- Used at Council meetings, limited use by outside organizations
- Need: Update as needed and promote availability



Joint Projects 3 and 5: Media Kits and Excursions

- 2005 Media Excursion scheduled in conjunction with research cruise
- In cooperation with FWC *C.T. Randall*
- Cancelled due to weather conditions



Media Excursion August 2009

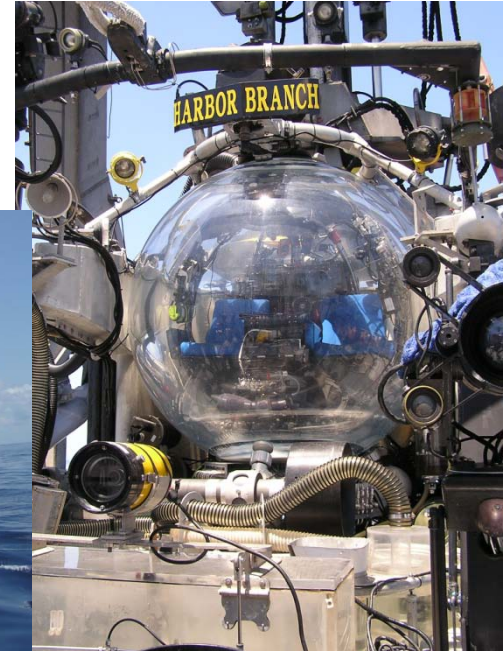
- VIP and Media Excursion to HBOI
R/V Seward Johnson
- Deployment of submersible
- Information stations onboard



Media Excursion 2009



Media Excursion



Media Stories

charlotteobserver.com

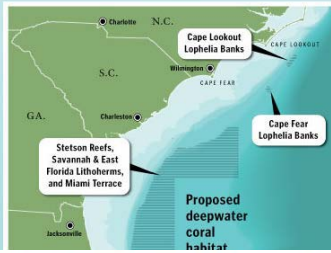
Observer Interactive Graphics

TREASURE UNDER THE SEA

DIVE TO THE DEEP FRONTIER

Ancient coral reefs, many of them hundreds of feet tall, lie in pockets along the Atlantic seafloor where they form the backbone of an intricate ecosystem that is home to hundreds of marine animals.

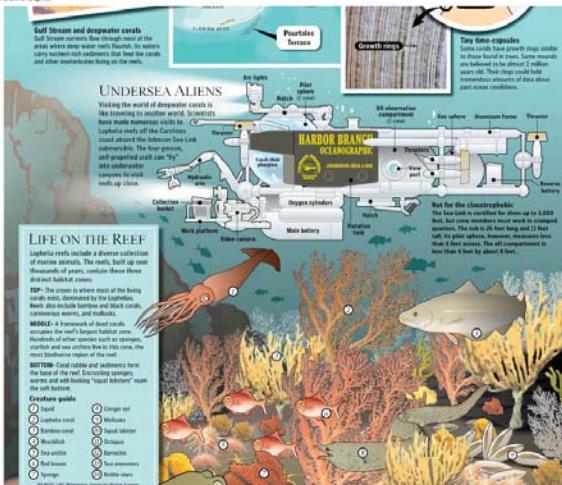
Scientists are only beginning to unravel the mysteries of deep-sea coral reefs off the Atlantic coast from Cape Lookout to the Florida keys. Formed over thousands to millions of years in cold, dark waters 1,000 to 3,000 feet deep, coral mounds host unique communities of deep-sea animals. The Bush administration is considering naming the reefs a national monument, a move that scientists say is needed to permanently protect them from



LOPHELIA CORAL

Most of the deepwater reefs along the Carolina coast are dominated by Lophelia pertusa corals. Lophelias form branched colonies of polyps that spread tree-like limbs. The polyps of live corals have tentacles with stinging cells that allow them to catch passing prey. When the polyps die, their limestone skeleton remains and new polyps continue to grow and branch off, forming larger colonies. The corals grow slowly, but over time form intricate, interconnected communities in their mounds. Old skeletons trap sediments that attract and nourish other species in a fragile, yet vigorous, ecosystem.

Lophelia branch



http://www.char

The world at your fingertips at OrlandoSentinel.com

Friday, August 14, 2009 \$1

Orlando Sentinel

REACHING 1.3 MILLION PEOPLE WEEKLY IN PRINT AND ONLINE

• Drink plenty of water.
• Drink normally; don't gulp.
• Wear light-colored, loose clothing to deflect the heat.

"We're watering them early and often," Ocoee

PLEASE SEE HEAT, A15

children on the playing field at school? A15

All high schools, all the time: OrlandoSentinel.com/varsity

Discoveries from the deep — off Florida



ART HOWARD FOR THE ASSOCIATED PRESS

By Ludmilla Lelis | SENTINEL STAFF WRITER

ABOARD THE SEWARD JOHNSON They are among the most mysterious habitats on Earth: vast stretches of white, tree-like coral forests teeming with fish and other marine animals in the dark, bitterly cold depths of the Atlantic off the Florida coast.

Only in the past decade have scientists realized how extensive the deep-water reefs are — and what a diversity of life they host. About 50 miles east of Cape Canaveral, a team of scientists is on a 10-day mission to study the coral reefs at depths greater than 1,300 feet, in the hope that learning more about them will bolster efforts to protect the reefs from future exploitation.

During a Wednesday media tour of the research vessel Seward Johnson, biologists and other researchers said they are trying to unlock the mysteries of deep reefs by

PLEASE SEE REEFS, A11

This 1,400-foot-deep reef is east of Cape Canaveral.

to a nuclear power plant that more than three decades ago to generate electricity for as many as a half-million Central Florida homes will soon shut down their reactor. Once they do, the Progress Energy unit — on the Gulf of Mexico near Crystal River and about 85 miles from Orlando — will remain cold for an unusually long time, until Christmas. An army of welders, electricians and nuclear technicians will insert 76 new bundles of fuel into the reactor, each one costing \$1 million and weighing 1,536 pounds. More significantly, workers will perform what amount to major organ transplants on the plant.

The price of the overhaul will approach \$300 million, or as much as it costs to build a smaller, non-nuclear power plant.

But once it's restarted, the reactor

PLEASE SEE NUCLEAR, A4



Beth Kassab
Sentinel columnist
It's when, not if, for nuclear, B5

Please recycle. Newsprint is a renewable resource.

©2009 Orlando Sentinel Communications Company 7 49538 50500 6

The Daytona Beach
News-Journal
news-journalonline.com



South Atlantic Fishery Management Council

Joint Project 7: Data Buoy

- Information added to NOAA National Data Buoy Center Station 41114 – Ft. Pierce, FL
- Direct Link to SAFMC website and Oculina Bank regulations

National Oceanic and Atmospheric Administration's
National Data Buoy Center
Center of Excellence in Marine Technology

Station ID Search

Station List

Observations
Mobile Access
Obs via Google Maps

Classic Maps
Recent
Historical
DART®
Oil & Gas

ADCP
Obs Search
Ship Obs Report
Glider
APEX
TAO
DOPs
HF Radar
OSMC
Dial-A-Buoy
RSS Feeds
Obs Web Widget
Email Access

Station Status
NDBC
Maintenance
NDBC Platforms
Partner Platforms

Program Info
Find us on Facebook

NDBC on Facebook

About NDBC
MetOcean
Moored Buoy
C-MAN
TAO
DART®
VOS
CSP
IOOS® Program
IOOS® DAC

Publications
NDBC DQC
Handbook
Hurricane Data
Plots
Mariners

BuoyCAMS: See recent photos from NDBC weather buoy 44013 near Boston, DART station 46410 in the Gulf of Alaska, 46029 near the Oregon/Washington coastline and the following TAO stations: [2N 155W](#) [5N 155W](#)

Station 41114 - Fort Pierce, FL (134)


Information submitted by [Scripts](#)
[Institution of Oceanography](#)
Waverider Buoy
27.551 N 80.225 W (27°33'5" N 80°13'31" W)

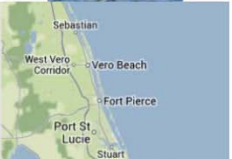
Site elevation: sea level
Water depth: 16.15 m

[Going to Oculina Bank? Please review Oculina fishing regulations.](#)

[Search And Rescue \(SAR\) Data](#)

[Meteorological Observations from Nearby Stations and Ships](#)







Large icon indicates selected station.
♦ Stations with recent data
♦ Stations with no data in last 8 hours (24 hours for tsunami stations)
[Disclaimer](#)

Conditions at 41114 as of
(8:36 pm EST on 11/11/2013)
0136 GMT on 11/12/2013:

Unit of Measure: Time
Zone:

Click on the graph icon in the table below to see a time series plot of the last five days of that observation.

	Wave Height (WVHT):	3.0 ft
	Dominant Wave Period (DPD):	5 sec



Project 8: Work with Smithsonian Marine Station



Original Oculina Bank
interpretive display



Smithsonian Marine Station Oculina Coral Exhibit







Objective 4: Evaluation

Project 1. Survey Tool

- 2005 Informal survey conducted by FL Sea Grant
- Limited distribution and results
- Need: Use survey and other tools to evaluate outreach efforts


UNIVERSITY OF
FLORIDA
IFAS EXTENSION


Sea Grant Extension Program, Broward County
1455 Treadwell Blvd. SE
Palm Bay, FL 32909-2212
TEL: 321-952-4536 ext. 28
E-mail: smc@sea-grant.org
<http://sea-grant.org>

OCULINA BANK OUTREACH SURVEY (6/30/05)

Florida Sea Grant is developing new outreach materials to help fishermen better understand fisheries management and the regulations affecting their fishing activities. Please take a minute to answer the following questions so we can better serve you! All answers are confidential and anonymous.

- Check the following that best describes yourself:
☐ Recreational Fisherman ☐ Charter Captain ☐ Charter Mate
☐ Commercial Fisherman ☐ Boat Tackle Business Owner
☐ Marina Operator/Employer ☐ Other (please specify) _____
- Do you know about the Oculina Bank Habitat Area of Particular Concern (HAPC)?
☐ Yes ☐ No ☐ Unsure
- Do you know that there is an area inside the Oculina Bank HAPC that is closed to fishing for snapper/grouper species?
☐ Yes ☐ No ☐ Unsure
- Do you have the coordinates for the boundaries for the Oculina HAPC and the Oculina Experimental Closed Area?
☐ Yes ☐ No ☐ Unsure
- Oculina coral is found only in the deep waters off the central East Coast of Florida and nowhere else in the world. ☐ True ☐ False
- How do you prefer to get your fishing information? (Number your top 3 choices, #1 being your first choice.)
☐ Magazines ☐ Newsletters ☐ Television ☐ Internet
☐ Tackle Shop ☐ E-mail ☐ Radio Shows ☐ Newspaper
☐ Other Fishermen ☐ Other (please specify) _____
- If you own a boat, what size boat do you own?
☐ Under 17 ft. ☐ 17-24 ft. ☐ 25-32 ft. ☐ Greater than 32 ft.
☐ I don't own a boat (skip to Q. 9)
- Where do you keep your boat?
☐ On a trailer ☐ Marina/Dry Storage ☐ Other (please specify) _____

PLEASE TURN PAGE OVER TO CONTINUE

The Institute of Food and Agricultural Sciences (IFAS) is an Equal Opportunity - Affirmative Action Employer authorized to provide research, educational information and other services only to individuals and institutions that function without regard to race, color, sex, age, disability or national origin. U.S. Department of Agriculture, Cooperative Extension Service, University of Florida, IFAS, Florida A & M University Cooperative Extension Program, and Boards of County Commissioners Cooperating.

Objective 4: Evaluation

Project 2: Continued Community Input

- Continued contact with Smithsonian Marine Station
- Contact with Cape Canaveral Charter Captain's Association
- Oculina Bank business collaboration
- Need: Better utilize community contacts



Oculina Outreach Summary

- Good cooperation with Partners to achieve the projects defined under each objective
- Several projects are ongoing and others are dependent upon research and monitoring activities



Ongoing Outreach Needs

- Continue distribution of regulation information
- Continue to work with fishing chart manufacturers – assess available information and improve if necessary
- Coordinate additional distribution of regulation information with FWC
- Additional news releases and newsletter articles in conjunction with law enforcement and research and monitoring activities



Ongoing Outreach Needs

- Develop powerpoint presentation and provide on SAFMC website and for use at fishing clubs, etc.
- Continue to distribute rack cards/printed materials and coordinate with local fishing tournaments for distribution
- Add teacher workshop/educational materials to SAFMC website



Ongoing Outreach Needs

- Continue to conduct teacher workshops and develop/update educational materials
- Offer media excursions and develop media packets in conjunction with ongoing research and monitoring activities
- Update portable display and increase use



Outreach Needs

- **Evaluation:**
- Surveys
- Additional community involvement
- Other methods?





Questions?