

**Spatial Information on Habitat and Fishery Operations Associated with the Proposed Extension of the Oculina CHAPC and Deepwater CHAPCs - April 2013 (Roger Pugliese, SAFMC)**

	Page
Figures 1 & 2. Oculina CHAPC Proposed Northern Extension Associated Habitat Mapping and Bathymetry	2-3
Figure 3. Deepwater Shrimp Vessel Monitoring (2003-2013)	4
Figure 4. Oculina CHAPC Proposed Northern Extension: Rock Shrimp VMS (Alternative 2a)	5
Figure 5. Oculina CHAPC Proposed Northern Extension: Rock Shrimp VMS (Alternative 2b)	6
Figure 6. Oculina CHAPC Proposed Western Extension, Rock Shrimp VMS and Bathymetry (Alternative 3)	7
Tables 1& 2. Deepwater Shrimp Fishing (VMS) Associated with Proposed Alternatives for Northern and Western Extension of the Oculina CHAPC	8
Figure 7. Stetson-Miami Terrace CHAPC Proposed Extension, Mapped Habitat and Royal Red Fishing (VMS) (Alternative 2)	9
Figure 8. Stetson-Miami Terrace CHAPC Proposed Extension, Mapped Habitat and Royal Red Fishing VMS (Alternative 3)	10
Table 3. Deepwater Shrimp Fishing (VMS) Associated with Stetson-Miami Terrace CHAPC Scoping Alternative	11
Figure 9. Cape Lookout Proposed Extension, Mapped Habitat (Alternative 2)	12
Table 4. List of Coordinates: Alternative 2a Oculina CHAPC Proposed Northern Extension	13
Table 5. List of Coordinates: Alternative 2b Oculina CHAPC Proposed Northern Extension	14
Table 6. List of Coordinates: Alternative 3 Oculina CHAPC Proposed Western Extension	14
Table 7. List of Coordinates: Alternative 2 Stetson-Miami Terrace CHAPC Proposed Extension	15
Table 8. List of Coordinates: Alternative 3 Stetson-Miami Terrace CHAPC Proposed Extension	15
Table 9. List of Coordinates: Alternative 2 Cape Lookout CHAPC Proposed Extension	16

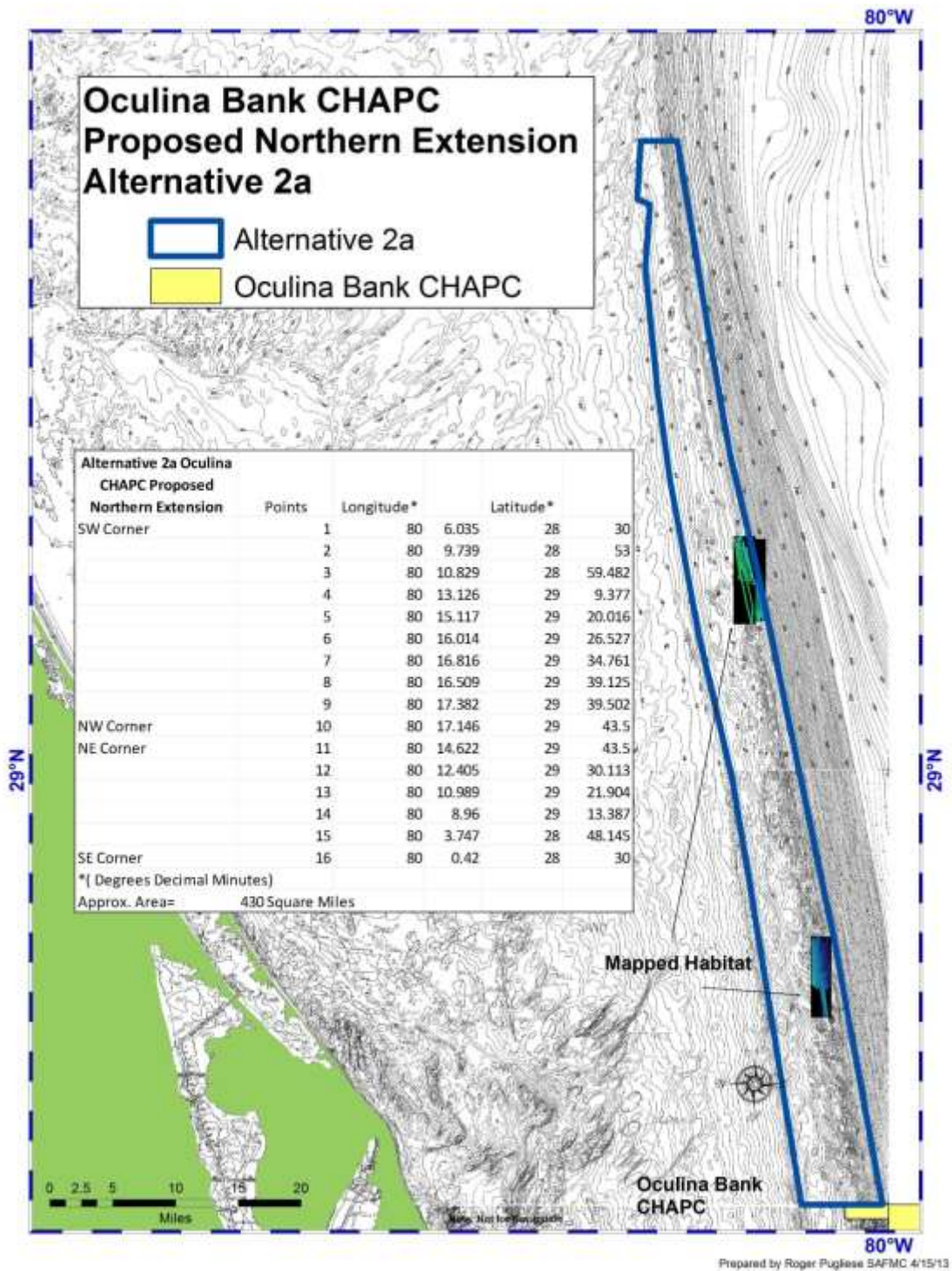


Figure 1. Oculina CHAPC Proposed Northern Extension Alternative 2a and Associated Habitat Mapping and Bathymetry.

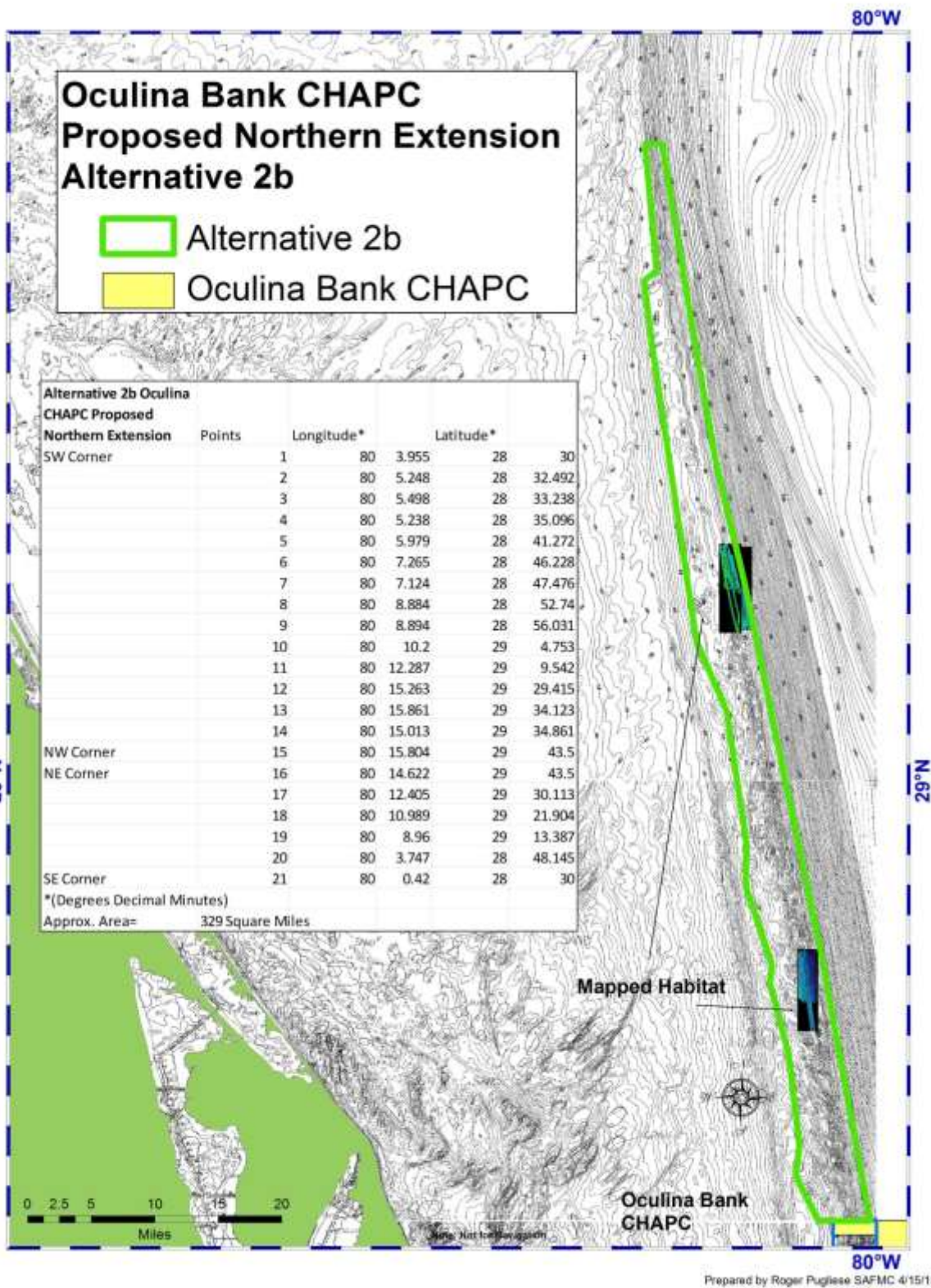


Figure 2. Oculina CHAPC Proposed Northern Extension Alternative 2b and Associated Habitat Mapping and Bathymetry.

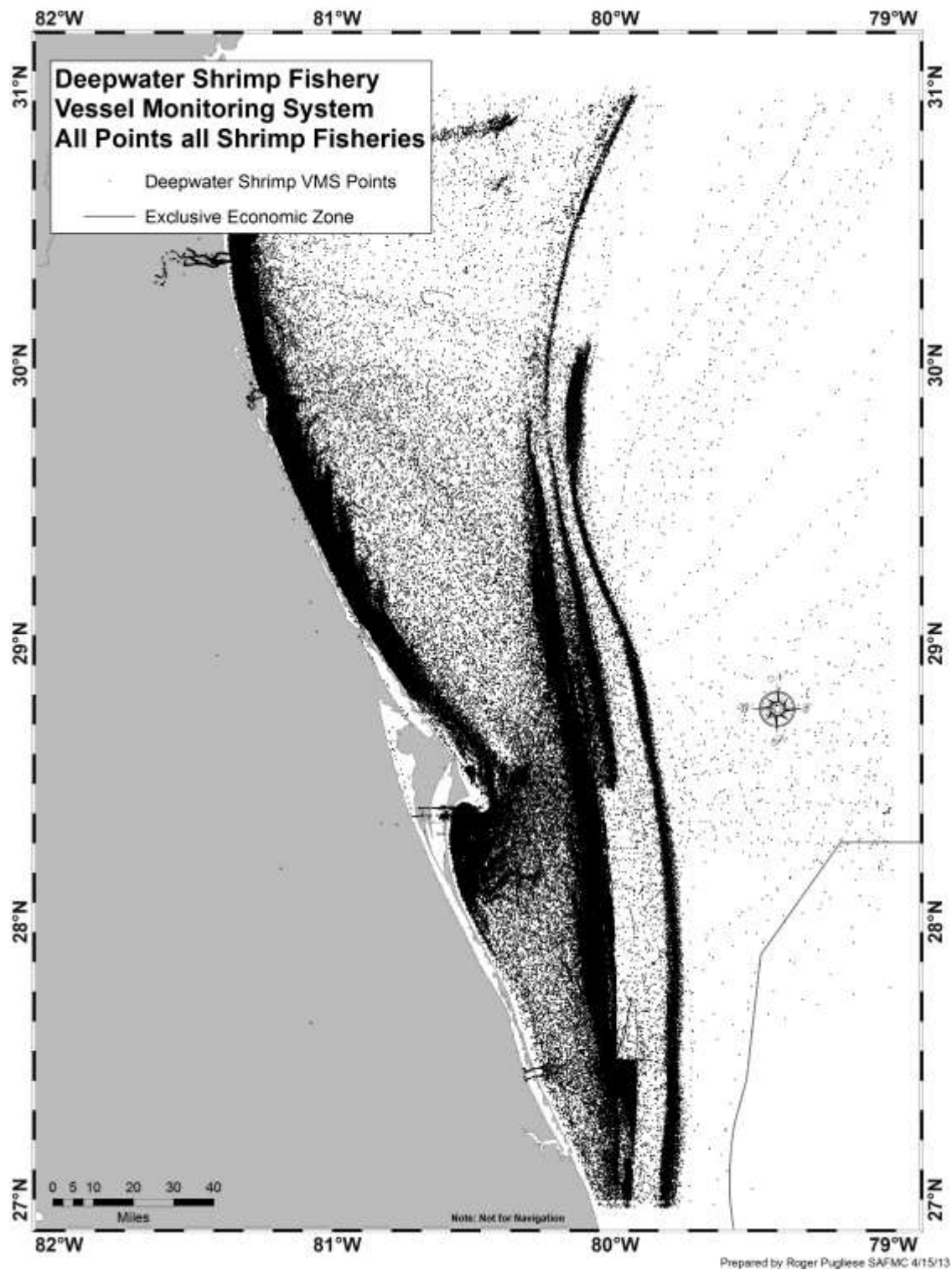


Figure 3. Deepwater Shrimp Fishery Vessel Monitoring, 2003-2013. (Data Source: NOAA OLE/Carlos Rivero, NOAA Fisheries SEFSC).

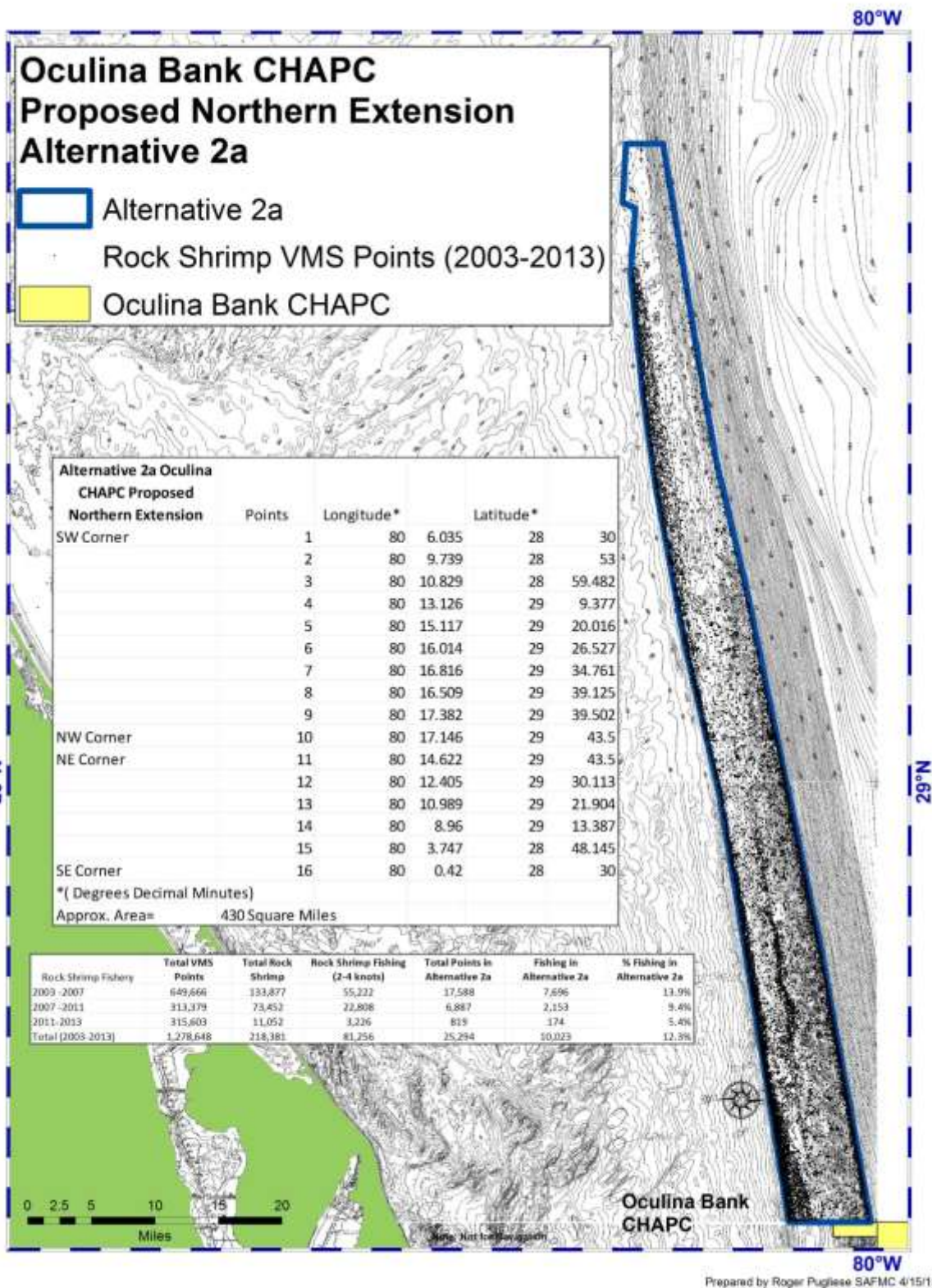


Figure 4. Oculina CHAPC Proposed Northern Extension Alternative 2a and Deepwater Shrimp VMS (2003-2013).

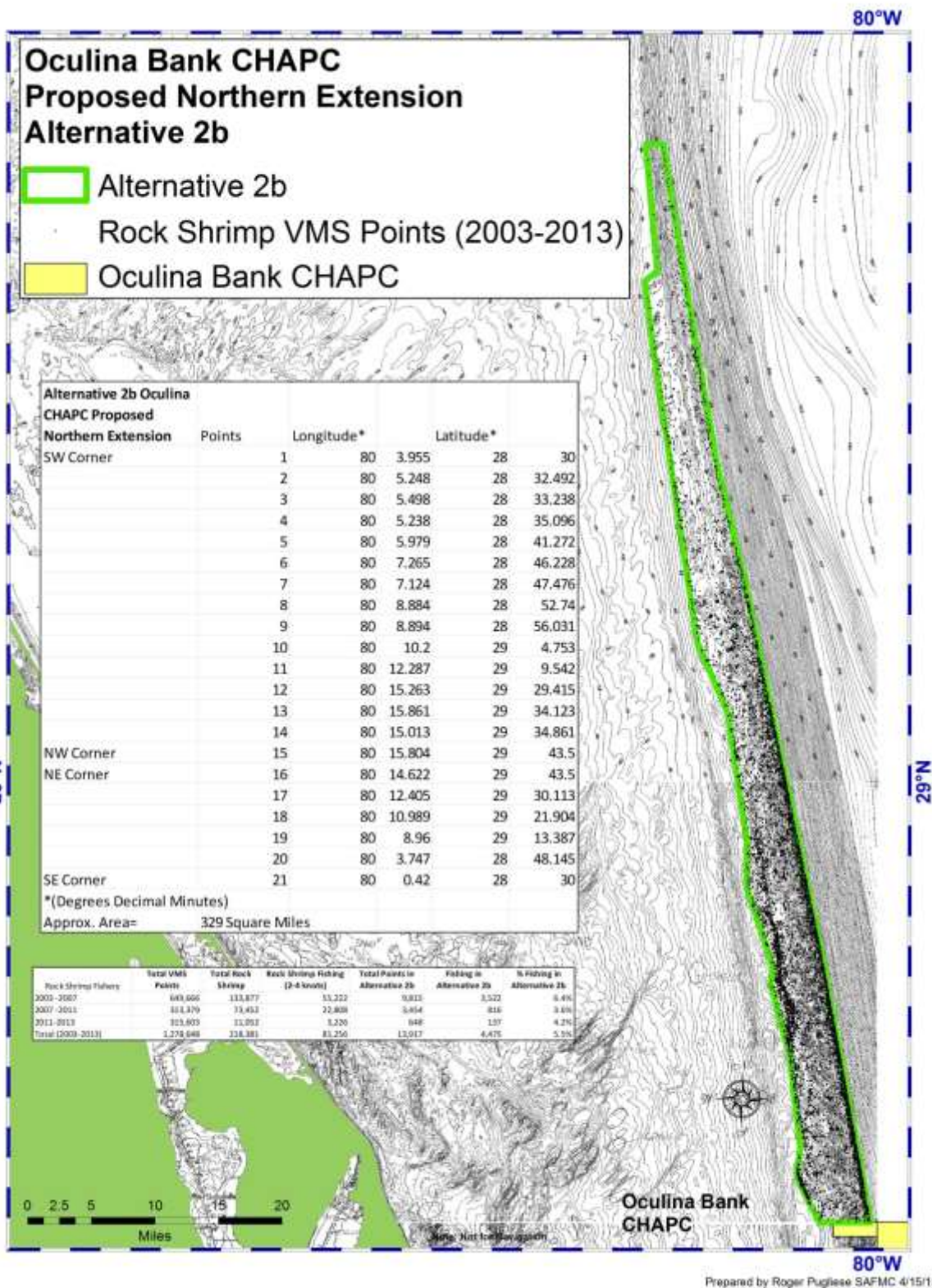


Figure 5. Oculina CHAPC Proposed Northern Extension Alternative 2b and Deepwater Shrimp VMS (2003-2013).

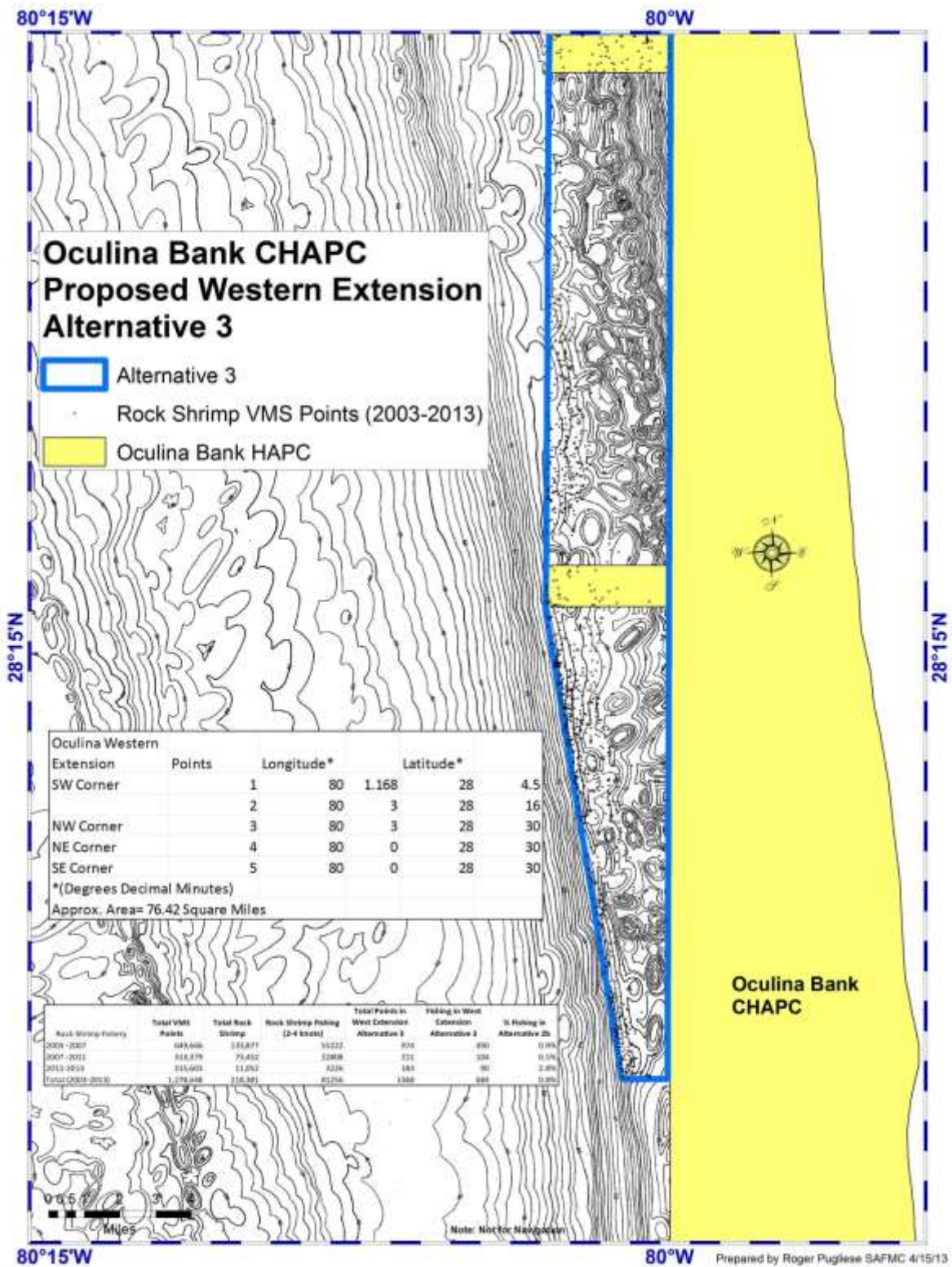


Figure 6. Oculina CHAPC Proposed Western Extension Alternative 3 and Deepwater Shrimp VMS (2003-2013).

**Table 1. Fishing Associated with Oculina CHAPC Proposed Northern Extension Alternative 2a and Alternative2b (Rock Shrimp VMS: 2003-2013).**

Rock Shrimp Fishery	Total VMS Points	Total Rock Shrimp	Rock Shrimp Fishing (2-4 knots)	Total Points in Alternative 2a	Fishing in Alternative 2a	% Fishing in Alternative 2a
2003 -2007	649,666	133,877	55,222	17,588	7,696	13.9%
2007 -2011	313,379	73,452	22,808	6,887	2,153	9.4%
2011-2013	315,603	11,052	3,226	819	174	5.4%
Total (2003-2013)	1,278,648	218,381	81,256	25,294	10,023	12.3%
Rock Shrimp Fishery	Total VMS Points	Total Rock Shrimp	Rock Shrimp Fishing (2-4 knots)	Total Points in Alternative 2b	Fishing in Alternative 2b	% Fishing in Alternative 2b
2003 -2007	649,666	133,877	55,222	9,815	3,522	6.4%
2007 -2011	313,379	73,452	22,808	3,454	816	3.6%
2011-2013	315,603	11,052	3,226	648	137	4.2%
Total (2003-2013)	1,278,648	218,381	81,256	13,917	4,475	5.5%

(Note: Time Series Represented Oct 2003-March 2013)

**Table 2. Fishing Associated with Oculina CHAPC Proposed Western Extension Alternative 3 (Rock Shrimp VMS: 2003-2013).**

Rock Shrimp Fishery	Total VMS Points	Total Rock Shrimp	Rock Shrimp Fishing (2-4 knots)	Total Points in West Extension Alternative 3	Fishing in West Extension Alternative 3	% Fishing in Alternative 2b
2003 -2007	649,666	133,877	55222	974	490	0.9%
2007 -2011	313,379	73,452	22808	211	104	0.5%
2011-2013	315,603	11,052	3226	183	90	2.8%
Total (2003-2013)	1,278,648	218,381	81256	1368	684	0.8%



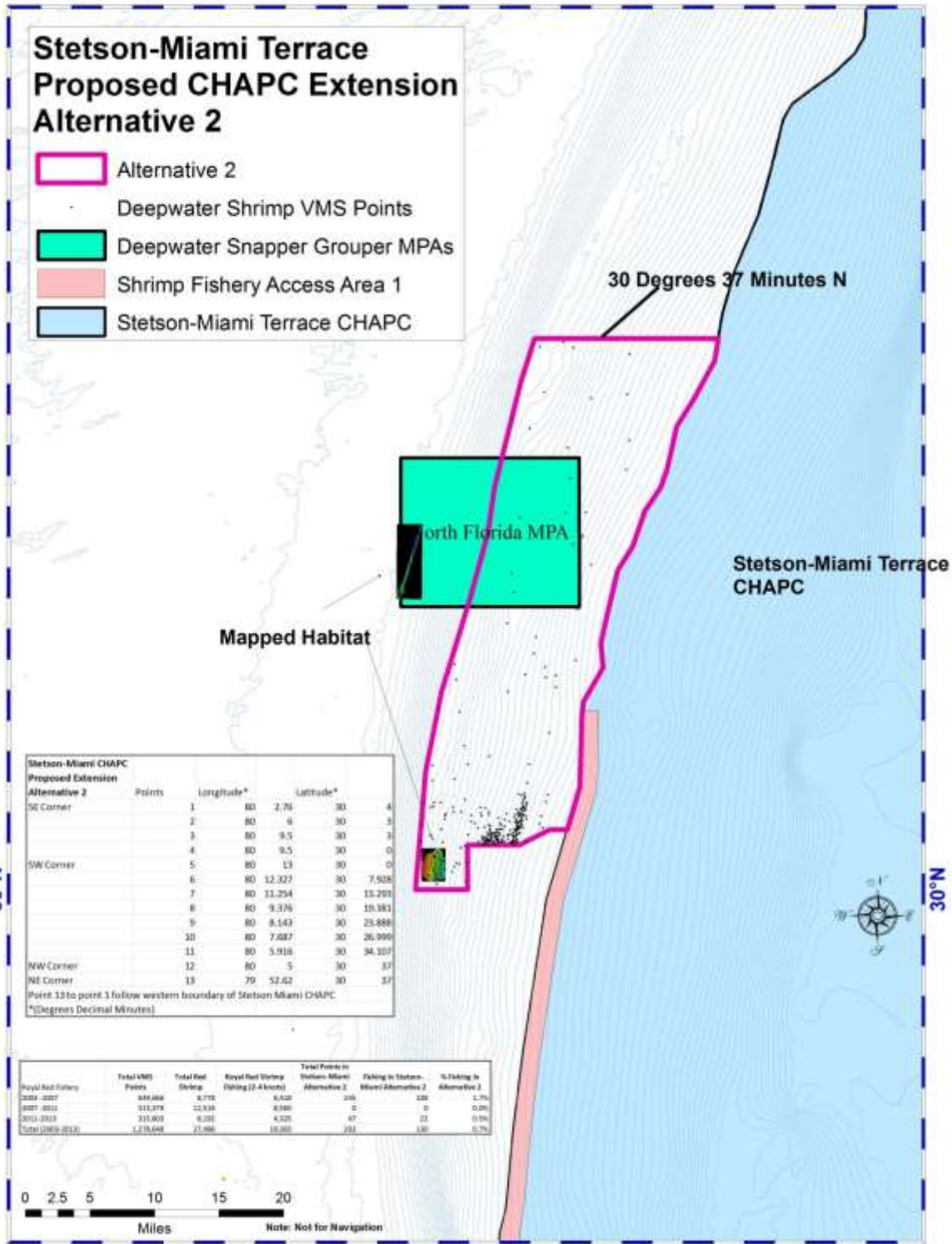


Figure 7. Stetson-Miami Terrace CHAPC Proposed Extension Alternative 2 and Deepwater Shrimp VMS (2003-2013).

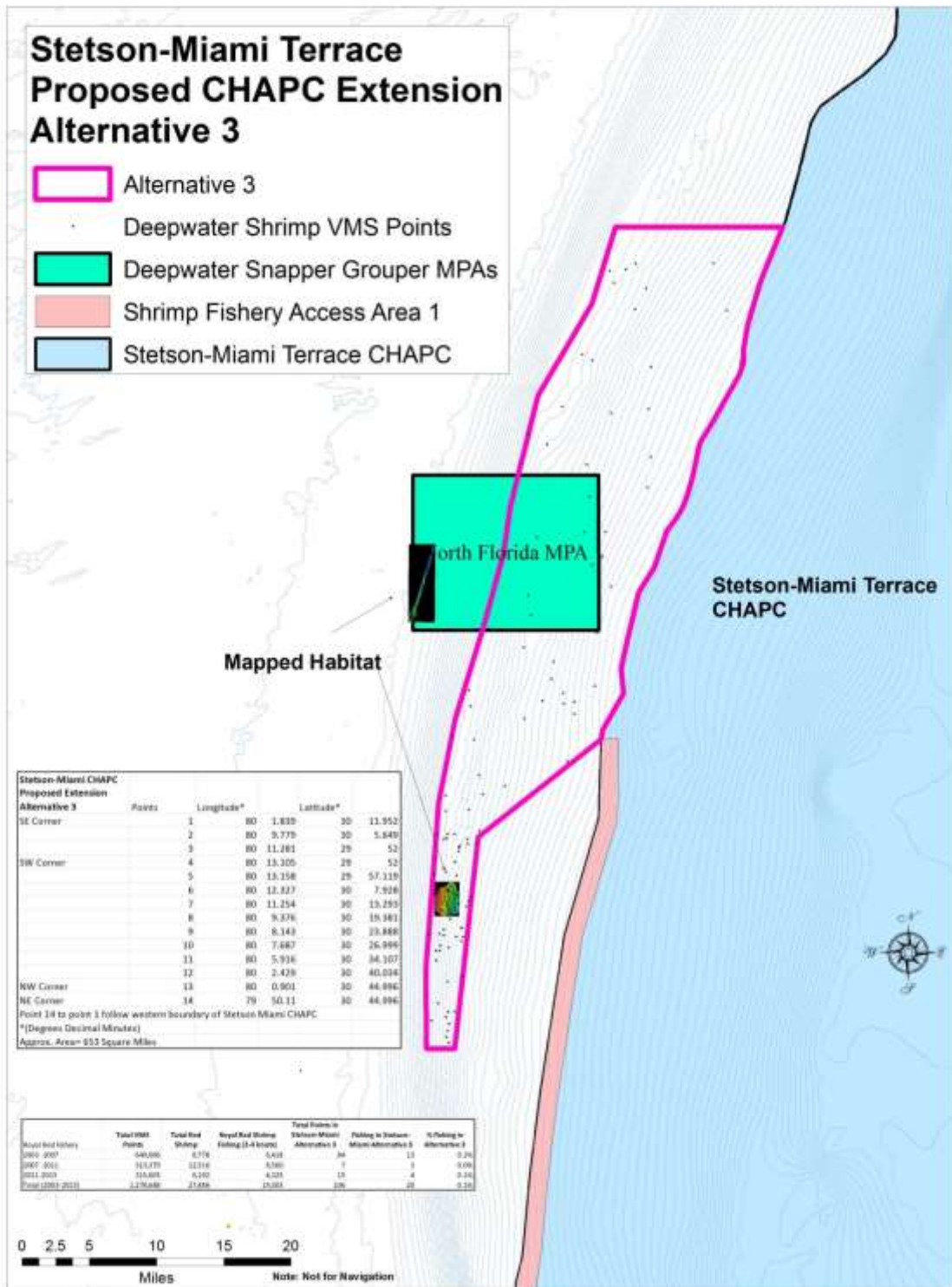


Figure 8. Stetson-Miami Terrace CHAPC Proposed Extension Alternative 3 and Deepwater Shrimp VMS (2003-2013).

Table 3. Fishing Associated with Stetson-Miami Terrace CHAPC Alternative 2 and Alternative 3 (Rock Shrimp VMS: 2003-2013).

Royal Red Fishery	Total VMS Points	Total Red Shrimp	Royal Red Shrimp Fishing (2-4 knots)	Total Points in Stetson-Miami Alternative 2	Fishing in Stetson-Miami Alternative 2	% Fishing in Alternative 2
2003 -2007	649,666	8,778	6,418	245	108	1.7%
2007 -2011	313,379	12,516	8,560	0	0	0.0%
2011-2013	315,603	6,192	4,325	47	22	0.5%
Total (2003-2013)	1,278,648	27,486	19,303	292	130	0.7%
Royal Red Fishery	Total VMS Points	Total Red Shrimp	Royal Red Shrimp Fishing (2-4 knots)	Total Points in Stetson-Miami Alternative 3	Fishing in Stetson-Miami Alternative 3	% Fishing in Alternative 3
2003 -2007	649,666	8,778	6,418	84	13	0.2%
2007 -2011	313,379	12,516	8,560	7	3	0.0%
2011-2013	315,603	6,192	4,325	15	4	0.1%
Total (2003-2013)	1,278,648	27,486	19,303	106	20	0.1%

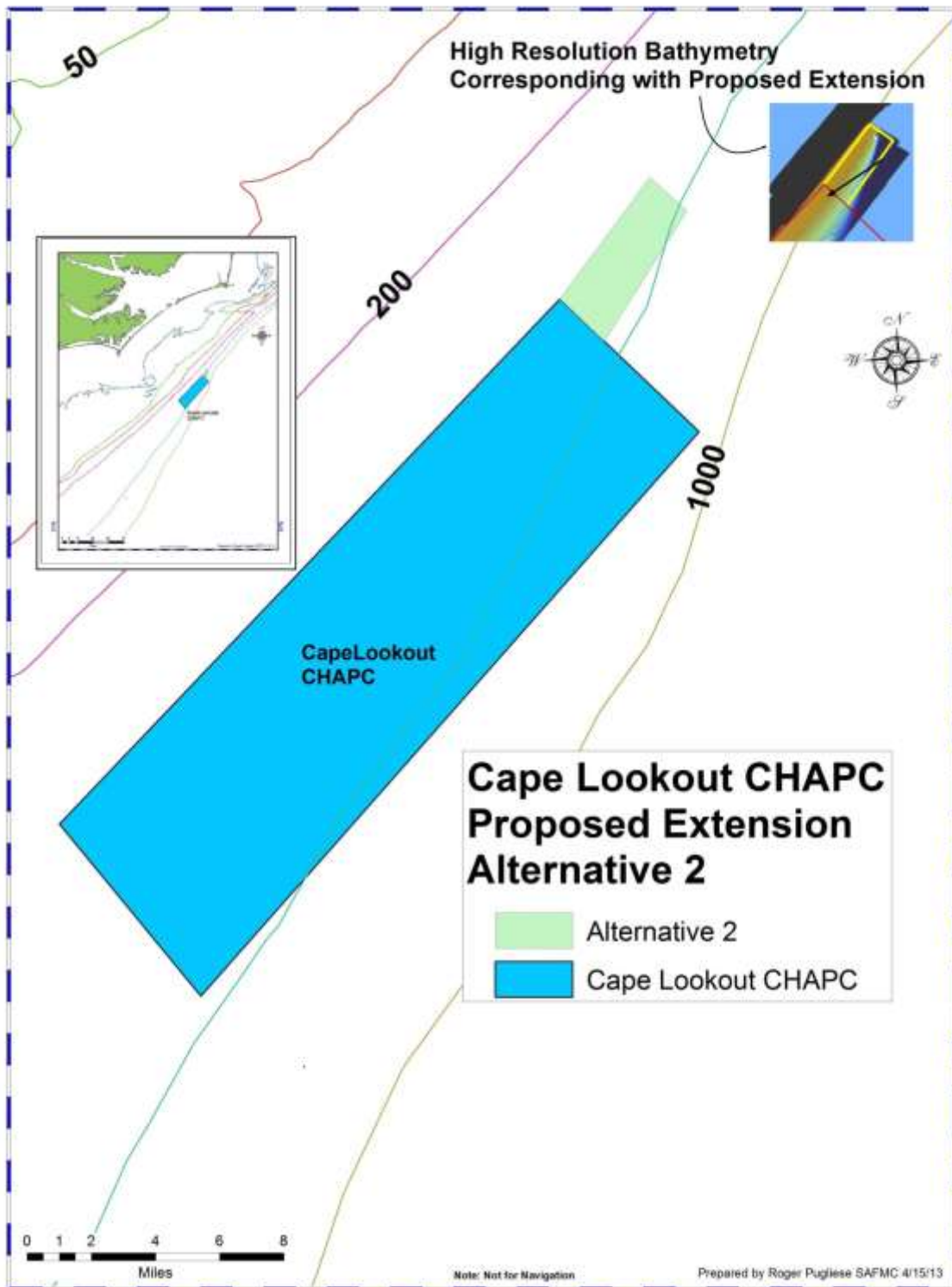


Figure 9. Cape Lookout CHAPC Proposed Extension Alternative 2 and Habitat Mapping.

Table 4. List of Coordinates for Alternative 2a Oculina CHAPC Proposed Northern Extension.

<b>Alternative 2a Oculina CHAPC Proposed Northern Extension</b>	<b>Points</b>	<b>Longitude*</b>		<b>Latitude*</b>		
SW Corner	1	80	6.035	28	30	
	2	80	9.739	28	53	
	3	80	10.829	28	59.482	
	4	80	13.126	29	9.377	
	5	80	15.117	29	20.016	
	6	80	16.014	29	26.527	
	7	80	16.816	29	34.761	
	8	80	16.509	29	39.125	
	9	80	17.382	29	39.502	
NW Corner	10	80	17.146	29	43.5	
NE Corner	11	80	14.622	29	43.5	
	12	80	12.405	29	30.113	
	13	80	10.989	29	21.904	
	14	80	8.96	29	13.387	
	15	80	3.747	28	48.145	
SE Corner	16	80	0.42	28	30	
*( Degrees Decimal Minutes)						
Approx. Area=	430 Square Miles					

Table 5. List of Coordinates for Alternative 2b Oculina CHAPC Proposed Northern Extension.

<b>Alternative 2b Oculina CHAPC Proposed Northern Extension</b>						
	Points	Longitude*			Latitude*	
SW Corner	1	80	3.955	28	30	
	2	80	5.248	28	32.492	
	3	80	5.498	28	33.238	
	4	80	5.238	28	35.096	
	5	80	5.979	28	41.272	
	6	80	7.265	28	46.228	
	7	80	7.124	28	47.476	
	8	80	8.884	28	52.74	
	9	80	8.894	28	56.031	
	10	80	10.2	29	4.753	
	11	80	12.287	29	9.542	
	12	80	15.263	29	29.415	
	13	80	15.861	29	34.123	
	14	80	15.013	29	34.861	
NW Corner	15	80	15.804	29	43.5	
NE Corner	16	80	14.622	29	43.5	
	17	80	12.405	29	30.113	
	18	80	10.989	29	21.904	
	19	80	8.96	29	13.387	
	20	80	3.747	28	48.145	
SE Corner	21	80	0.42	28	30	
*(Degrees Decimal Minutes)						
Approx. Area=		329 Square Miles				

Table 6. List of Coordinates for Alternative 3 Oculina CHAPC Proposed Western Extension.

<b>Oculina CHAPC Proposed Western Extension Alternative 3</b>						
	Points	Longitude*			Latitude*	
SW Corner	1	80	1.168	28	4.5	
	2	80	3	28	16	
NW Corner	3	80	3	28	30	
NE Corner	4	80	0	28	30	
SE Corner	5	80	0	28	30	
*(Degrees Decimal Minutes)						
Approx. Area=		76.42 Square Miles				

Table 7. List of Coordinates for Alternative 2 Stetson-Miami CHAPC Proposed Extension.

<b>Stetson-Miami CHAPC Proposed Extension Alternative 2</b>	Points	Longitude*		Latitude*	
SE Corner	1	80	2.76	30	4
	2	80	6	30	3
	3	80	9.5	30	3
	4	80	9.5	30	0
SW Corner	5	80	13	30	0
	6	80	12.327	30	7.928
	7	80	11.254	30	13.293
	8	80	9.376	30	19.381
	9	80	8.143	30	23.888
	10	80	7.687	30	26.999
	11	80	5.916	30	34.107
NW Corner	12	80	5	30	37
NE Corner	13	79	52.62	30	37
Point 13 to point 1 follow western boundary of Stetson Miami CHAPC					
*(Degrees Decimal Minutes)					
Approx. Area= 490 Square Miles					

Table 8. List of Coordinates for Alternative 3 Stetson-Miami CHAPC Proposed Extension.

<b>Stetson-Miami CHAPC Proposed Extension Alternative 3</b>						
	Points	Longitude*		Latitude*		
SE Corner	1	80	1.839	30	11.952	
	2	80	9.779	30	5.649	
	3	80	11.281	29	52	
SW Corner	4	80	13.105	29	52	
	5	80	13.158	29	57.119	
	6	80	12.327	30	7.928	
	7	80	11.254	30	13.293	
	8	80	9.376	30	19.381	
	9	80	8.143	30	23.888	
	10	80	7.687	30	26.999	
	11	80	5.916	30	34.107	
	12	80	2.429	30	40.034	
NW Corner	13	80	0.901	30	44.996	
NE Corner	14	79	50.11	30	44.996	
Point 14 to point 1 follow western boundary of Stetson Miami CHAPC						
*(Degrees Decimal Minutes)						
Approx. Area= 653 Square Miles						

Table 9. List of Coordinates for Alternative 2 Cape Lookout Proposed Extension.

<b>Cape Lookout CHAPC Proposed Extension Alternative 2</b>						
	Points	Longitude*		Latitude*		
SE Corner	1	75	45.183	34	24.6166	
SW Corner	2	75	43.967	34	23.4833	
NW Corner	3	75	42.75	34	27.9	
NE Corner	4	75	41.75	34	27	
*(Degrees Decimal Minutes)						
Approx. Area= 10 Square Miles						