



Marine Resources Education Program - Southeast Update

Partners:

Gulf of Maine Research Institute

NOAA Fisheries

South Atlantic Fishery Management Council

Gulf of Mexico Fishery Management Council

Caribbean Fishery Management Council

June 2013



Marine Resources Education Program (MREP)

- Gulf of Maine Research Institute
 - Administrative partner and facilitator
- Workshop-based Program
 - Originated in New England
- Designed to foster new relationships and increase knowledge and understanding of:
 - **Fisheries Science**
 - **Fisheries Management**

“A program developed by fishermen for fishermen”



MREP Goals

- To bring fishermen, scientists and managers together in a neutral setting outside the regulatory process.
- To increase the number of people at work in the region's fisheries who are comfortable working with the fishery data and management systems.
- To help policy makers and scientists become more familiar with the inner working of the fishing community.
- To increase the number of fishermen involved in collaborative research and pursuit of best available science.
- To develop leadership and promote trust.





MREP Southeast

- **Program Funding 2012**
 - Start up funding secured by GMRI through NMFS, NFWF
- **Steering Committee**
 - First meeting in September 2012
 - Involved in 2013 workshops
 - Will provide ongoing program direction and evaluation
- **2013 Workshops**



New Logo!



MREP Southeast Workshops

- Joint SA/Gulf/Caribbean Workshops in 2013:
 - *Introduction to Fishery Science* - April
 - *Introduction to Management* - September
- Regional Workshops in 2014 and beyond



MREP Southeast 2013:

Participants

- Publicized in early 2013 by GMRI via:
 - Steering Committee
 - Post card mailings to permit holders
 - Councils
- Great response!
 - 60 applications for 20 seats; increased # of seats to 32



Intro to Fishery Science Workshop

- **Held April 2-4, 2013**
- **FWC – Fish and Wildlife Resources Institute**
- **Gulf, South Atlantic and Caribbean Participants:**
 - Recreational fishermen
 - Charter/for-hire
 - Commercial fishermen
 - Industry representatives
 - Media





Science Workshop Curriculum

- **Sampling and Survey Methods**

Luiz Barbieri and Gordon Colvin

- Fishery Dependent and Independent Data
- Data Collection
- Data Sources



Workshop Curriculum

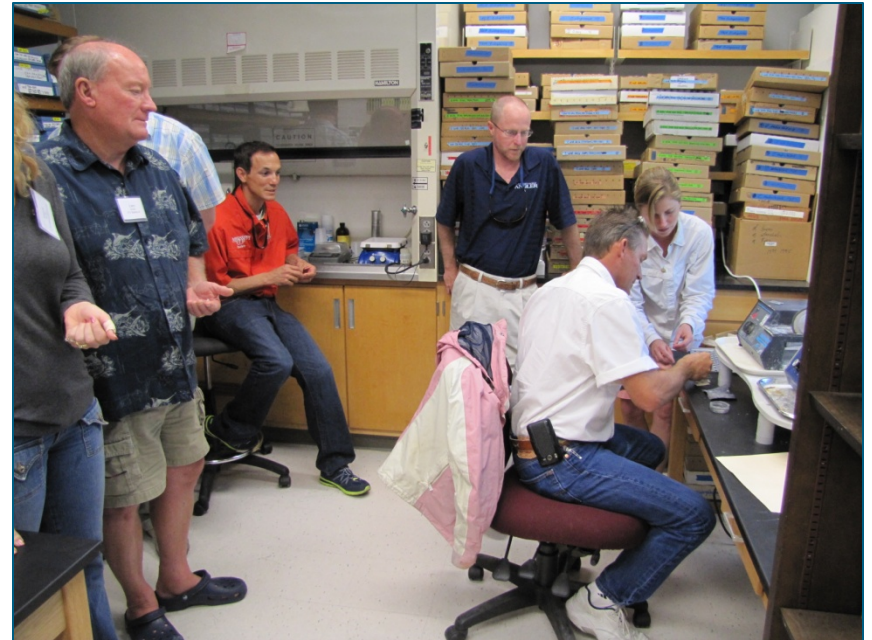
- **Population Biology**

Rotate Stations at FWRI

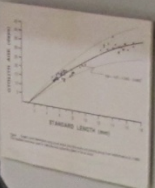
- **Wet Lab**
- **Age and Growth**
- **Sampling Gear**
- **Research Vessel Tour**



Wet Lab – Aging and Otoliths







Age and growth
estimation of s.
dates.

Research Vessel Tour

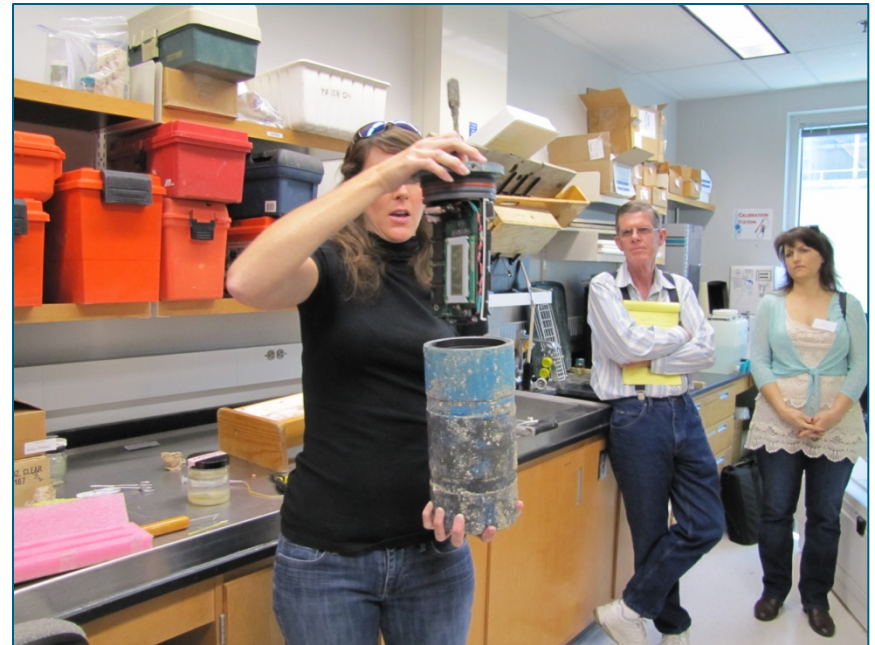




Wet Lab – Otolith Collection



Wet Lab – Tagging and Acoustical Monitoring



Sampling Tools – Gear and Monitoring



Chevron Traps and Video Monitoring





Back to the Classroom

- **SEDAR Process**
John Carmichael
- **Stock Assessment and Modeling**
John Carmichael, Clay Porch and Brian Litton
- **Cooperative Research**
Frank Heiles



Classroom Continued

- Conservation Engineering and Gear
- Cooperative Research
- Oceanography and Climate Drivers
- Ecosystem-Based Management



Evaluations

- Evaluations were distributed at the end of the workshop
- Positive Evaluations!
 - Instructors ranked highly
 - Majority found workshop “Valuable or Very Valuable”

Marine Resource Education Program
St. Petersburg, Florida
April 2 – 4, 2013

Evaluation Questionnaire

Please take a few moments to provide feedback on the Science Workshop. Your comments and suggestions are greatly appreciated and will help to ensure that we can continue to improve and evolve the program.

1. Please rate how valuable the following portions of the program were in enhancing your overall understanding and knowledge of fisheries science, based on a scale of 1 to 5 (1 = not valuable, 5 = very valuable). Circle your answer for both the content, and the presenter's ability to communicate the content.

	Part 1: Content Rating	Part 2: Presenter Rating
DAY 1 - Tuesday		
Sampling and Survey Overview (Lutz Barbieri)	1 2 3 4 <u>5</u>	1 2 3 4 <u>5</u>
Fishery Dependent Data Collection (Gordon Colvin)	1 2 3 4 <u>5</u>	1 2 3 4 <u>5</u>
Population Biology Introduction (John Carmichael)	1 2 3 4 <u>5</u>	1 2 3 4 <u>5</u>
FWRI Labs/Stations 1. Reproductive Biology Lab	1 2 3 4 <u>5</u>	1 2 3 4 <u>5</u>
FWRI Labs/Stations 2. Age & Growth Lab	1 2 3 4 <u>5</u>	1 2 3 4 <u>5</u>
FWRI Labs/Stations 3. Sampling gear	1 2 3 4 <u>5</u>	1 2 3 4 <u>5</u>
FWRI Labs/Stations 4. Research vessel Tour	1 2 3 4 <u>5</u>	1 2 3 4 <u>5</u>
DAY 2 - Wednesday		
Stock Assessment Overview - SEDAR (John Carmichael)	1 2 3 4 <u>5</u>	1 2 3 4 <u>5</u>
Stock Assessment Modeling (Clay Porch)	1 2 3 4 <u>5</u>	1 2 3 4 <u>5</u>
Bycatch Reduction Technology (John Mitchell)	1 2 3 4 <u>5</u>	1 2 3 4 <u>5</u>
Conservation Engineering & Gear (Steve Theberge)	1 2 3 4 <u>5</u>	1 2 3 4 <u>5</u>
Cooperative Research (Frank Helies)	1 2 3 4 <u>5</u>	1 2 3 4 <u>5</u>
DAY 3 - Thursday		
Oceanography Overview (Mandy Karnauskas)	1 2 3 4 <u>5</u>	1 2 3 4 <u>5</u>
Ecosystem Based Management (Steve Murawski)	1 2 3 4 <u>5</u>	1 2 3 4 <u>5</u>





Management Workshop

- **September 2013**
- **Planning Underway**
- **Location**
- **Curriculum**
- **Instructors**





Questions?

Additional Program Information

www.gmri.org



South Atlantic Fishery Management Council