

# USCG Enforcement in MPAs

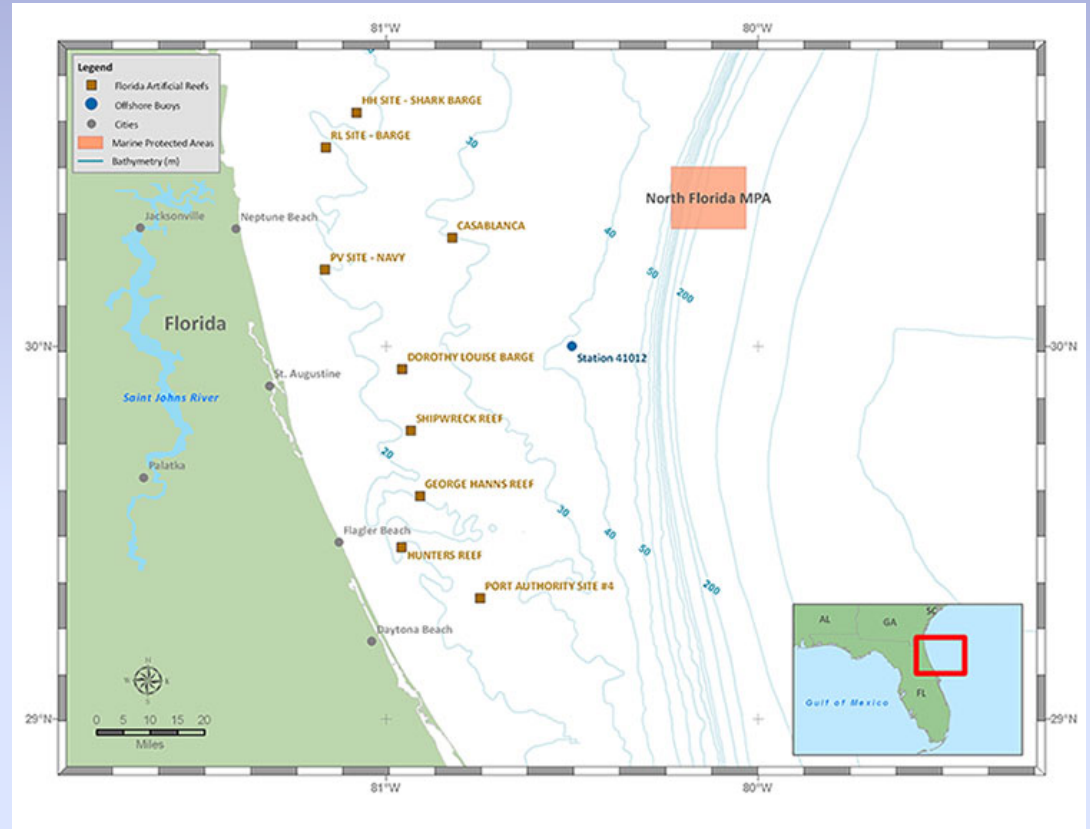
SAFMC MTG

DEC 2-6, 2013

# NORTH FLORIDA MPA

APPROXIMATELY  
80NM OFFSHORE  
FROM JACKSONVILLE,  
FL.

PATROL BOAT  
OPERATING AT TOP  
SPEED TAKES 8 HOURS  
FOR A ROUND-TRIP  
TRANSIT



(--FOR PURPOSE OF EXAMPLE--)  
THIS MPA AND THE GA MPA ARE THE  
FARTHEST, WITH GA 95NM OFFSHORE

# ENFORCEMENT ISSUES

- LMR hours in FY 13 were:
  - 6930 for cutters
  - 1500 for boats
  - Cutters are anything over 65'. Boats refers to small boat (Station) assets, which do not have the capability to go far offshore.

With sequestration, these hours were reduced to 4643 for cutters, and 1245 for boats

# FY 14 ALLOTMENTS

- Cutter Hours—5033
- Boat Hours—1182
- Transit time to the MPAs takes a big chunk of available hours, but can normally be logged as “Training” in our tracking system.

# Other Options

- Aircraft patrols of the closed areas
  - LT Mastrianni at Southeast Regional Fisheries Training Center in Charleston, SC, is developing training for pilots to be able to recognize fishing vessel activity.
  - Complications: Some areas allow some types of fishing but not others, so for an aircraft to decipher what a vessel is fishing for may be difficult.

- Major Cutter patrols enroute to Florida Straits patrols.
  - Cutters on their way south for migrant and counterdrug operations will be asked to route through these MPAs and report whether they see vessels, take pictures, etc.
  - If these cutters see vessels in the area, it may motivate patrol boats to visit MPAs more often.