



Renewable Energy and Environmental Studies Program Update

SAFMC Habitat Advisory Panel
May 2019

BOEM Office of Renewable Energy Programs



Leasing and Development Process



Planning & Analysis

~ 2 YEARS

- Intergovernmental Task Force
- Request for Information or Call for Information and Nominations
- Area Identification
- Environmental Reviews



Leasing

~ 1-2 YEARS

- Publish Leasing Notices
- Conduct Auction or Negotiate Lease Terms
- Issue Lease(s)



Site Assessment

UP TO 5 YEARS

- Site Characterization
- Site Assessment Plan



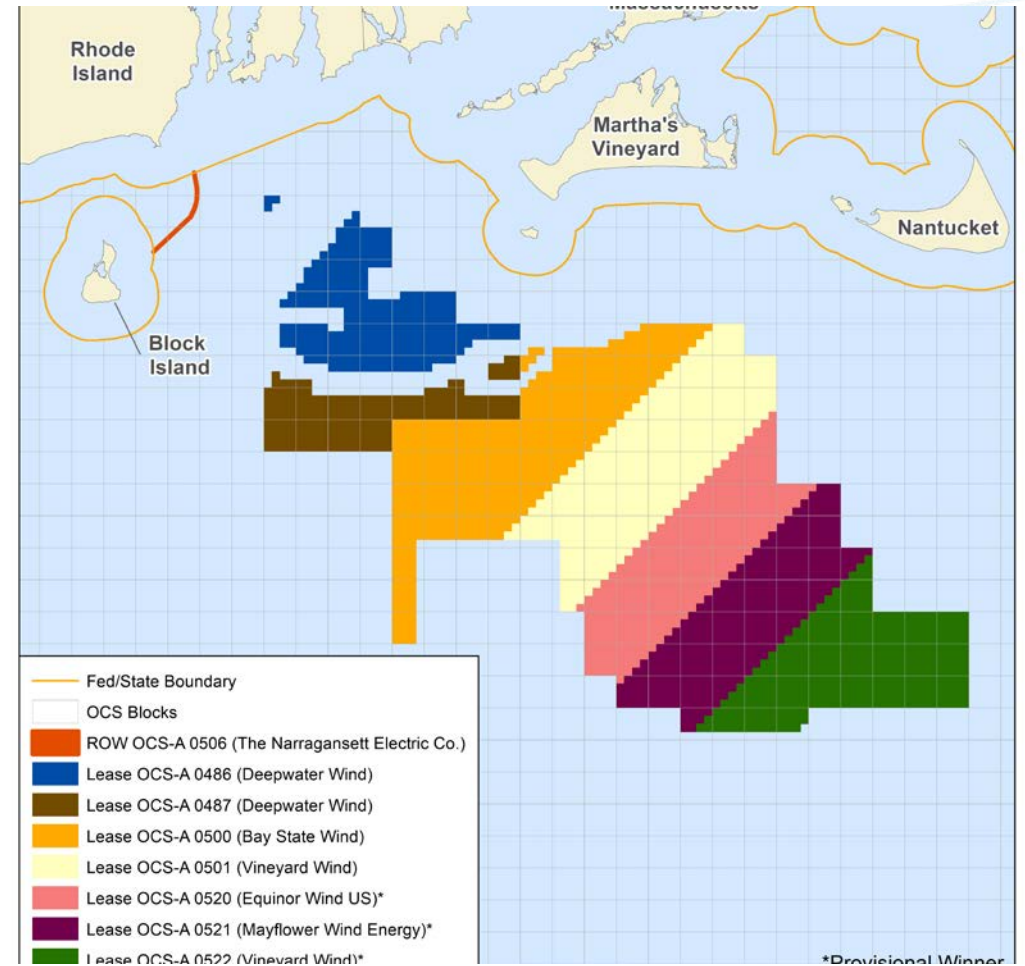
Construction & Operations

~ 2 YEARS (+25)

- Construction & Operations Plan
- Facility Design Report and Fabrication & Installation Report
- Decommissioning
- Environmental and Technical Reviews

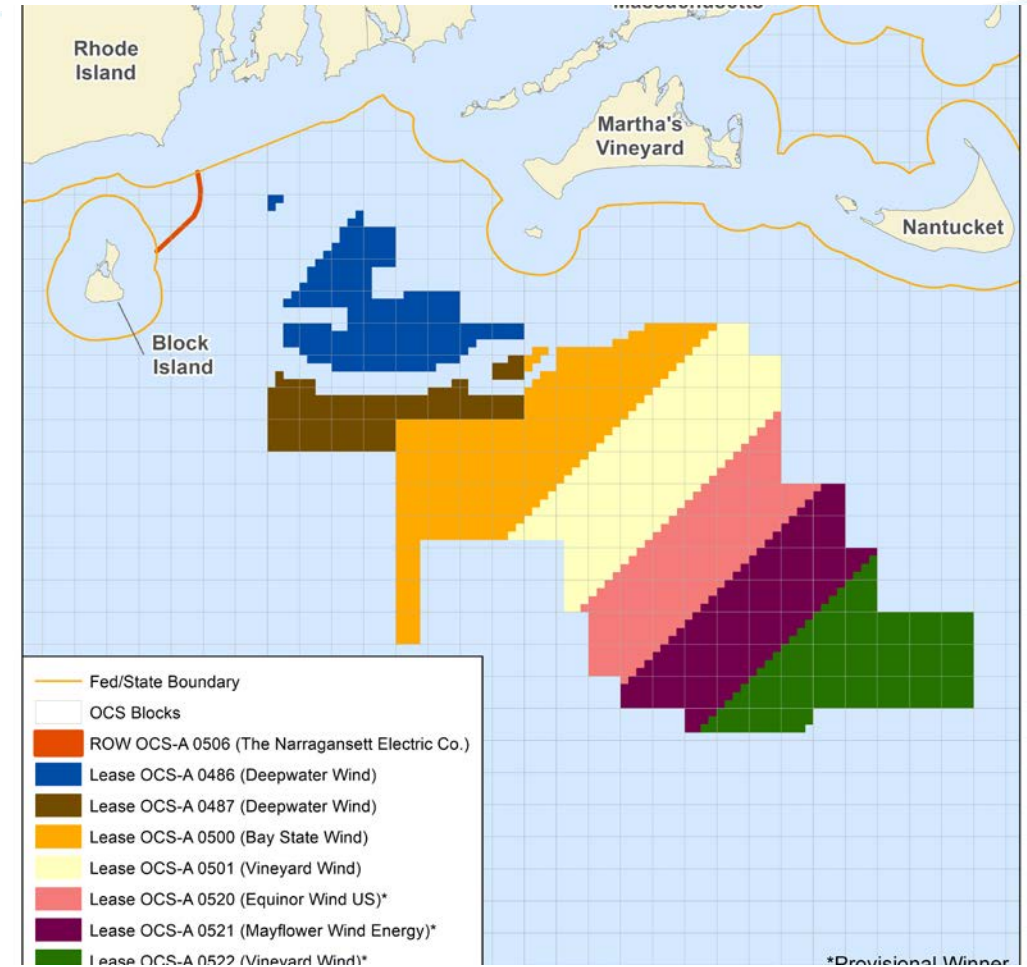
Project Status Updates 1

- **Atlantic Link (Emera):** Next step is a request for competitive interest to determine the leasing path.
- **Vineyard Liberty:** Lease OCS-A 0522 executed in March 2019.
- **Mayflower (Shell/EDPR):** Lease OCS-A 0521 executed in March 2019.
- **Equinor:** Lease OCS-A 0520 executed in March 2019



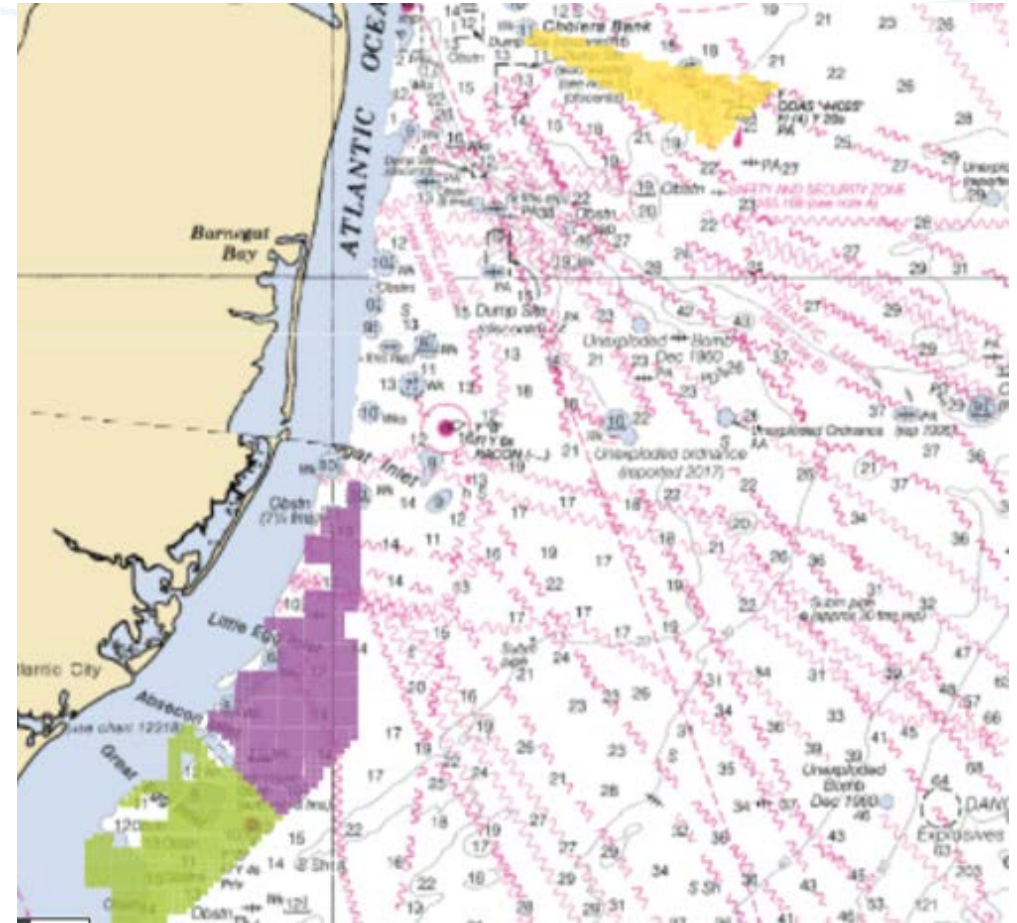
Project Status Updates 2

- **Vineyard Wind:** COP submitted, DEIS Published, drafting of FEIS/response to comments underway.
- **Bay State Wind:** Surveys ongoing, COP submitted in March, review underway.
- **South Fork Wind Farm:** COP submitted, Scoping meetings held, DEIS under development. (Project on Pause)
- **Revolution Wind Farm**
- **Sunrise Wind Farm**



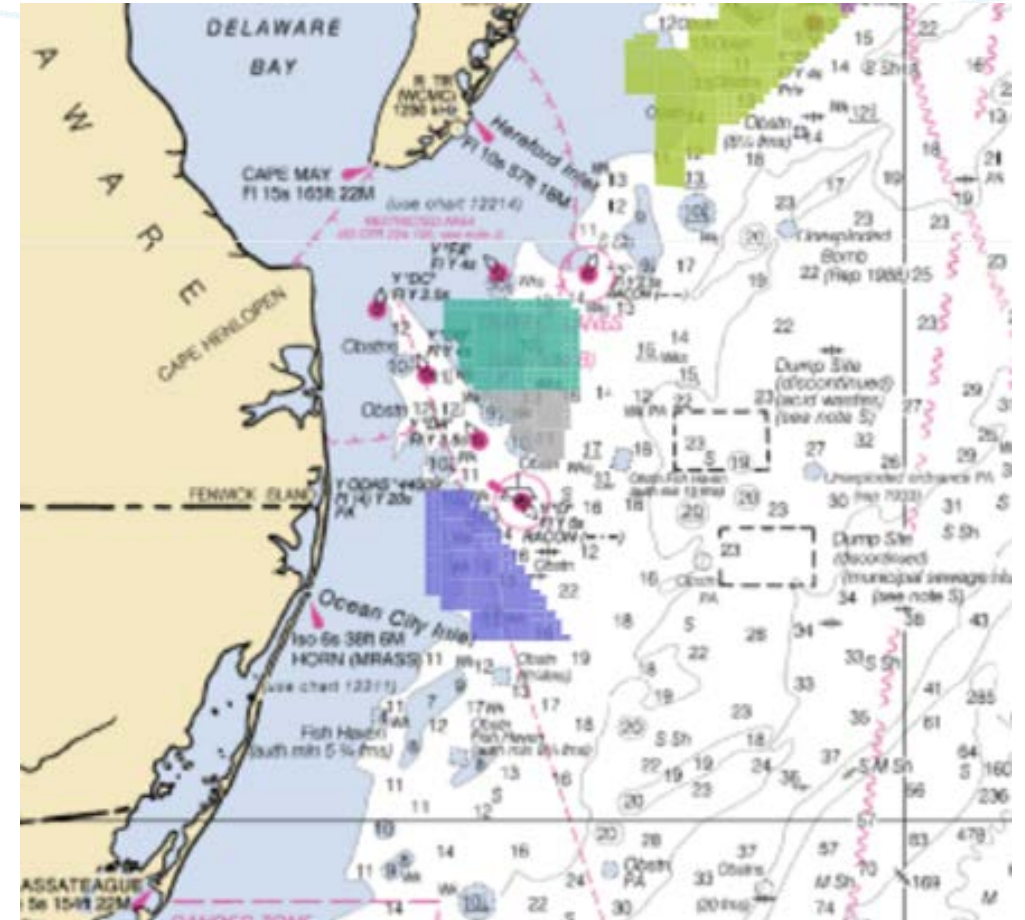
Project Status Updates 3

- **Empire Wind (Equinor):** SAP approved November 2018. COP expected fall 2019.
- **Atlantic Shores (EDF/Shell):** SAP expected in 2020.
- **Ocean Wind NJ (Orsted):** SAP approved May 2018. Waiting on COP.
- **Anbaric NY/NJ Ocean Grid (transmission):** Next step is Request for Competitive Interest.



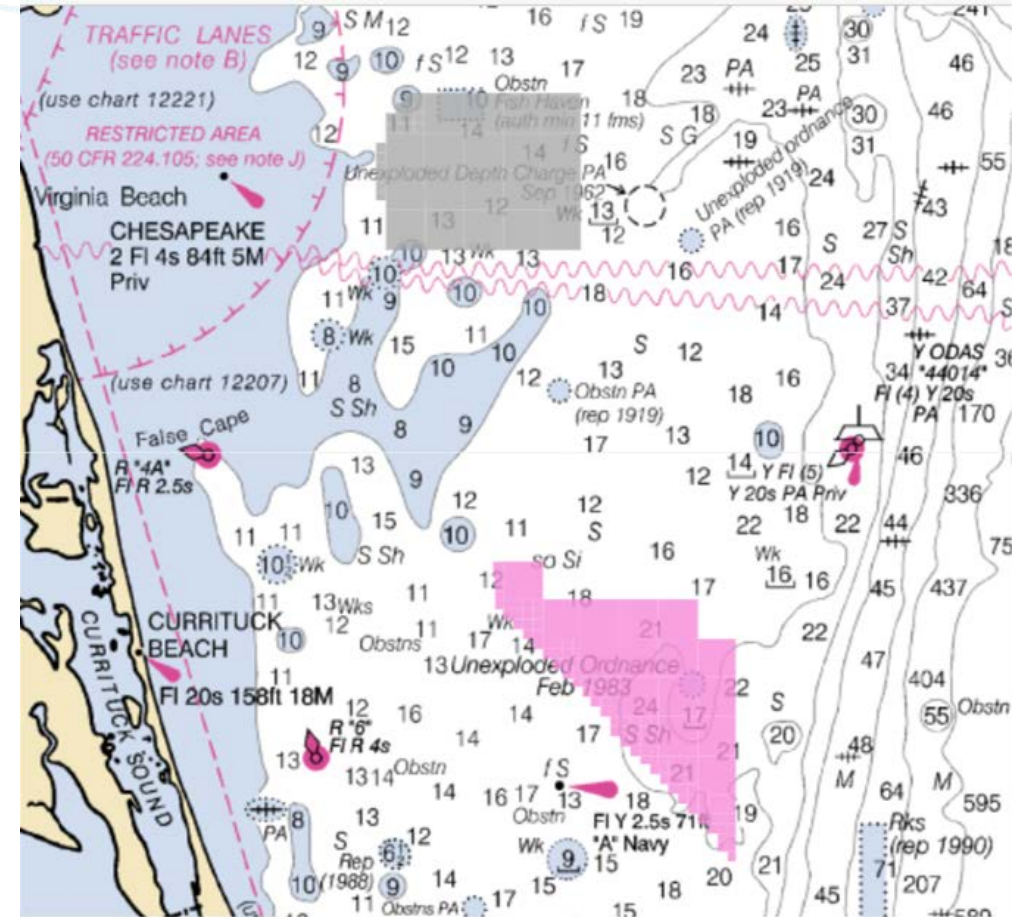
Project Status Updates 4

- **Skipjack Wind Farm (Orsted):** Received COP 4/2019.
- **US Wind MD (Toto/Renexia):** SAP approved. COP expected 2019.



Project Status Updates 5

- **Coastal Virginia Offshore Wind Project (demonstration scale with VA DMME/Orsted/Dominion):** Revised RAP under review. Construction may begin in early 2020.
- **Virginia (Dominion):** SAP approved.
- **Commercial Lease OCS-A 0508 (aka Kitty Hawk):** Surveys anticipated beginning in June.
- **South Atlantic Regional Task Forces**
 - VA/NC Task Force meeting being scheduled for summer 2019
 - NC/SC Task Force still under discussion.

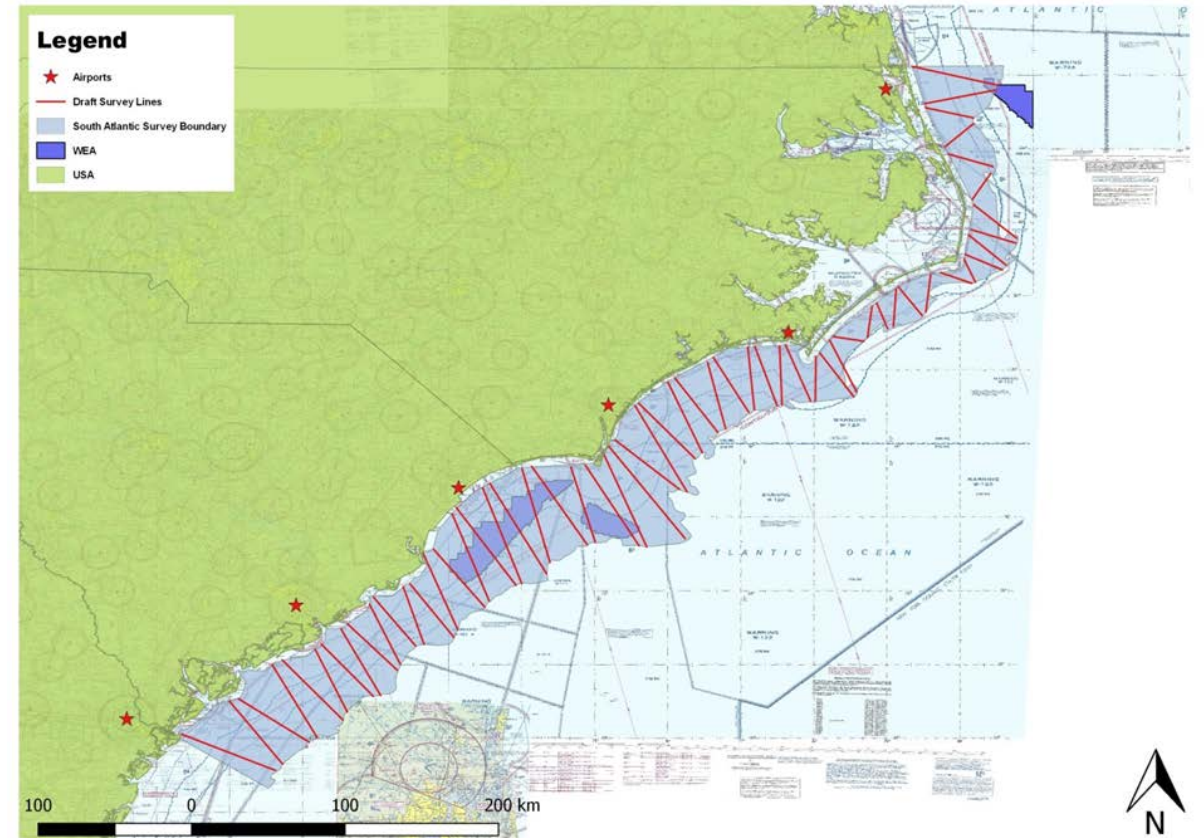


Other Program Notes

- BOEM is has paused work on 2010-2025 proposed program for oil and gas lease sales.
- Atlantic G&G Seismic Survey Permits. There are 5 permits for Incidental Harassment Authorizations that were issued 12/2018. (see: <https://www.boem.gov/Atlantic-G-and-G-Permitting/>)
- Marine Minerals Program progressing on EFH mapper tool and tail end of study at Canaveral Shoals, FL.

South Atlantic High Resolution Aerial Wildlife Surveys

- Four surveys flown (Feb, June, Oct, Dec)
- February and June data on portal
- Cumulative detections to date:
 - 1,732 large bony fish
 - 1,155 sharks
 - 4,611 rays
 - 38,247 sargassum
- Next survey to occur in June
- Final Report 2020



- Data available: https://remote.normandeau.com/boem_overview.php

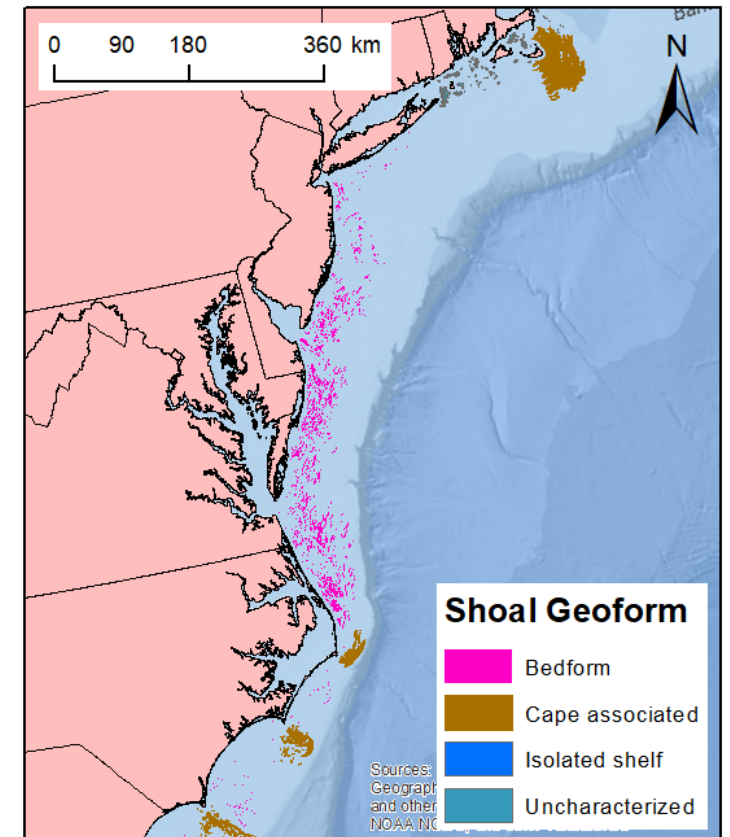
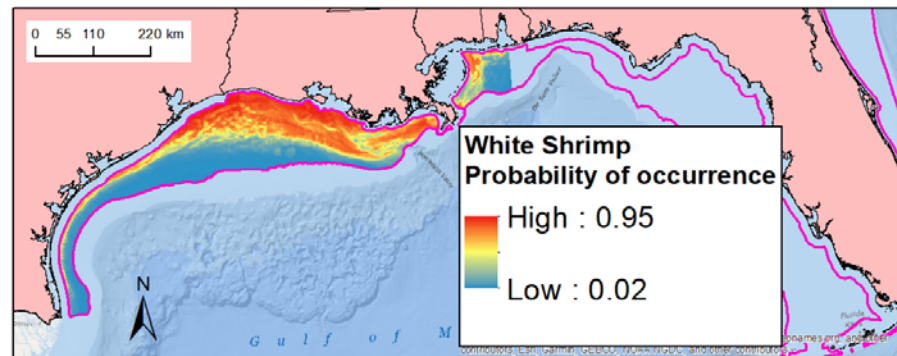
ShoalMATE – Shoal Map and Assessment Tool for EFH

Ongoing

- Review literature for dredging impacts and fish habitat associations
- Model fish density (for representative fish) to identify predictive environmental variables
- Develop full interactive mapping tool
- Finalize EFH Assessment template and contents

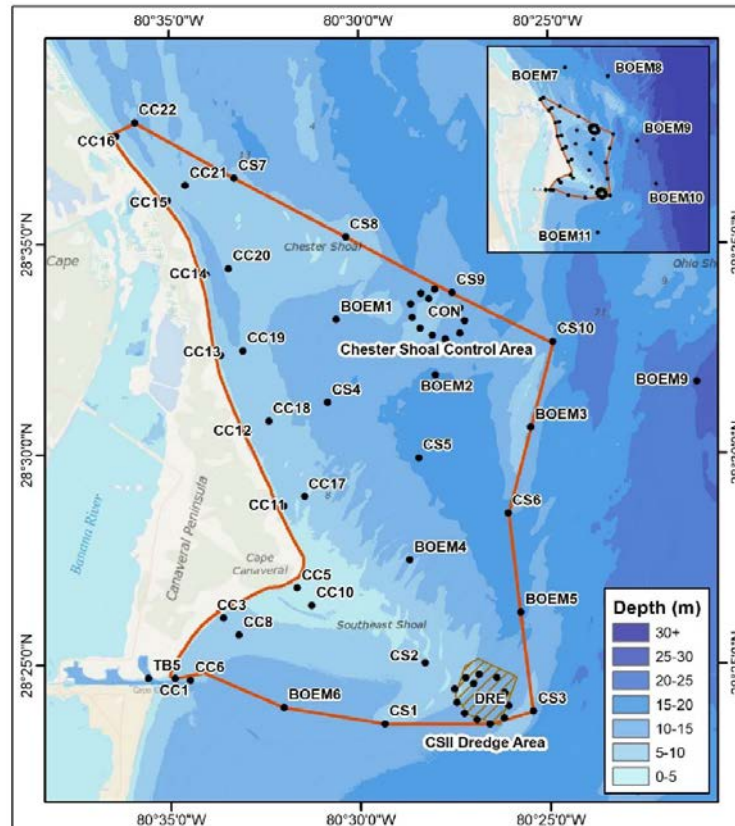
Complete

- Spatially integrated borrow areas, EFH, substrate, and abiotic info
- Classified and mapped shoals



Behavior, Habitat Preferences, and Seasonality of Mobile Fishes and Sea Turtles within a Large Sand Shoal Complex: Insights from Traditional Sampling and Emerging Technologies

- Goal is to determine use of offshore sand shoals by fishes and sea turtles
- Acoustic telemetry efforts involved tagging of 747 fishes from 14 target species including:
 - blacknose, finetooth, sharpnose, lemon.
 - and scalloped hammerhead sharks
 - roughtail stingray
 - red drum
 - bluefish
 - Spanish mackerel
 - king mackerel
 - cobia
 - red snapper
 - spot
 - Atlantic croaker



Behavior, Habitat Preferences, and Seasonality of Mobile Fishes and Sea Turtles within a Large Sand Shoal Complex: Insights from Traditional Sampling and Emerging Technologies

- 2013-2018 - 923 fish from 39 species were detected.
- Most species were widely distributed in the study area.
- Overall community structure and diversity was influenced by season, water depth, and distance from shore.
- Differences in use between the dredge and control sites were modest.
- High mobility was consistently observed across species.
- Coastal migrations with a general northward migration in spring and with many animals returning to east-central Florida in fall.
- Seasonal presence of Atlantic sturgeon and smalltooth sawfish (manta ray).
- First Report June 2019.





Bureau of Ocean Energy
Management

BOEM.gov



Jennifer Bucatari | jennifer.bucatari@boem.gov | 703-787-1742