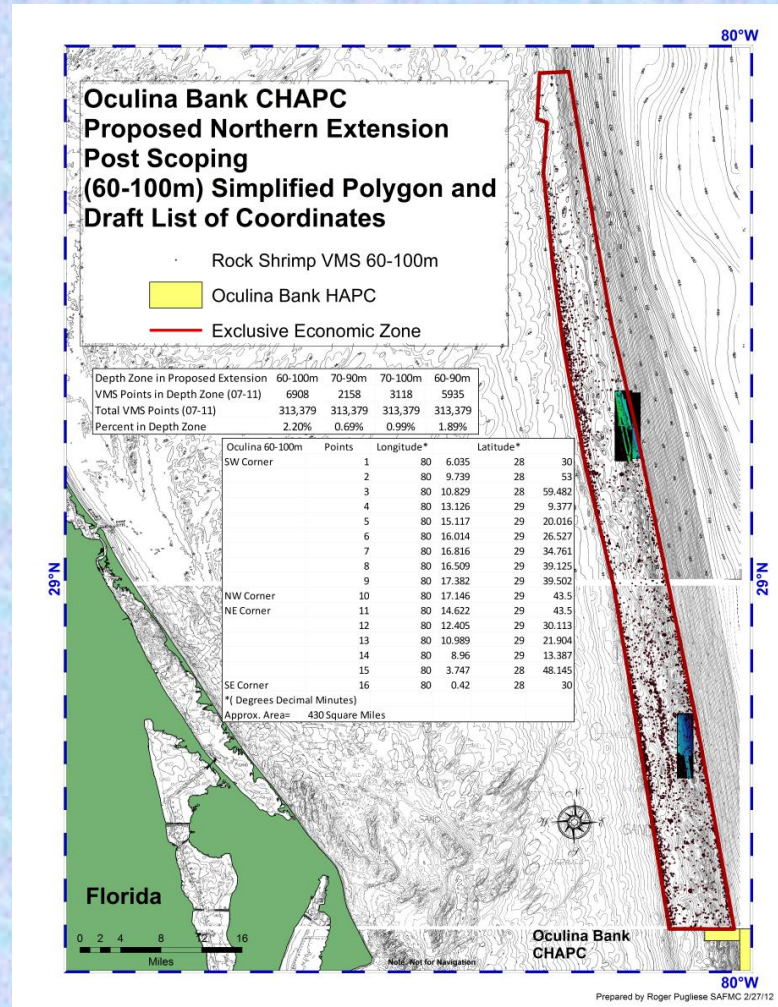




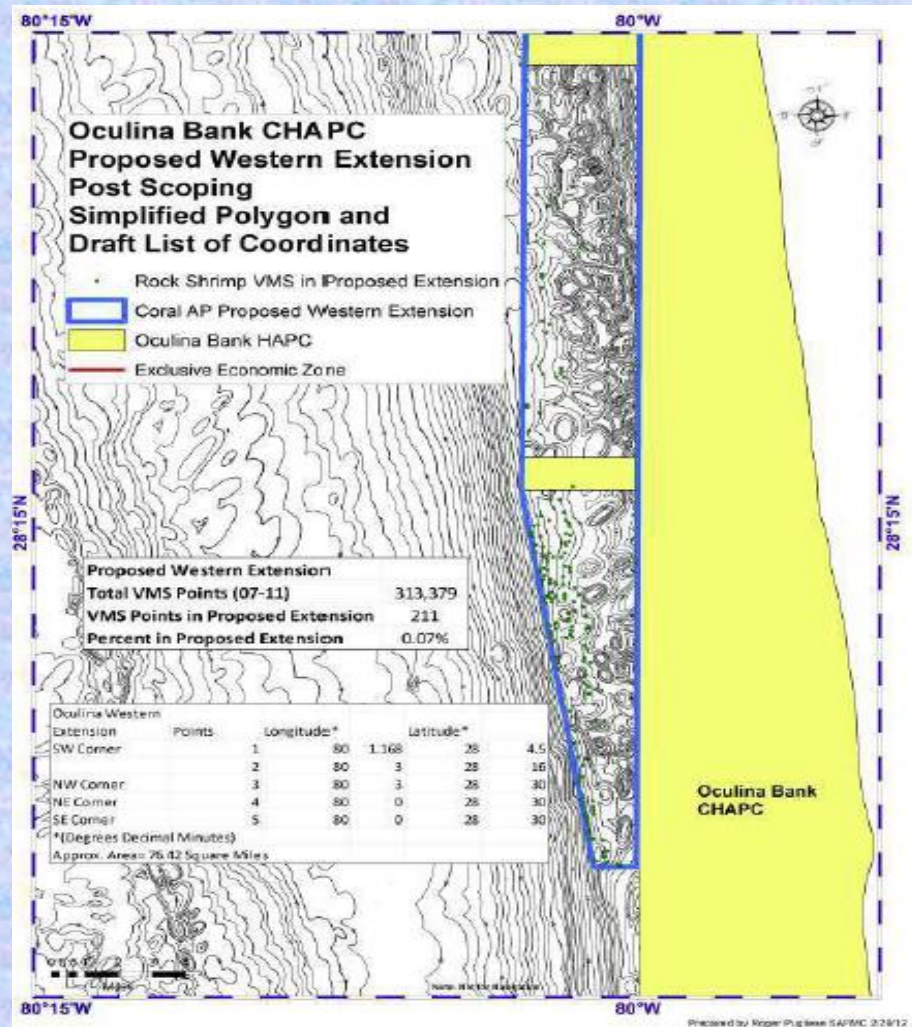
**Actions Voted Upon By the
SAFMC
Habitat and Environmental Protection Advisory Panel
Webinar
May 15, 2012**

Action 1. Expand boundaries of the Oculina Bank HAPC. Motion was made by to recommend to the Council that Alternative 2a (map and text below from briefing the AP's materials) for public scoping. The motion was seconded and passed without a dissenting vote.



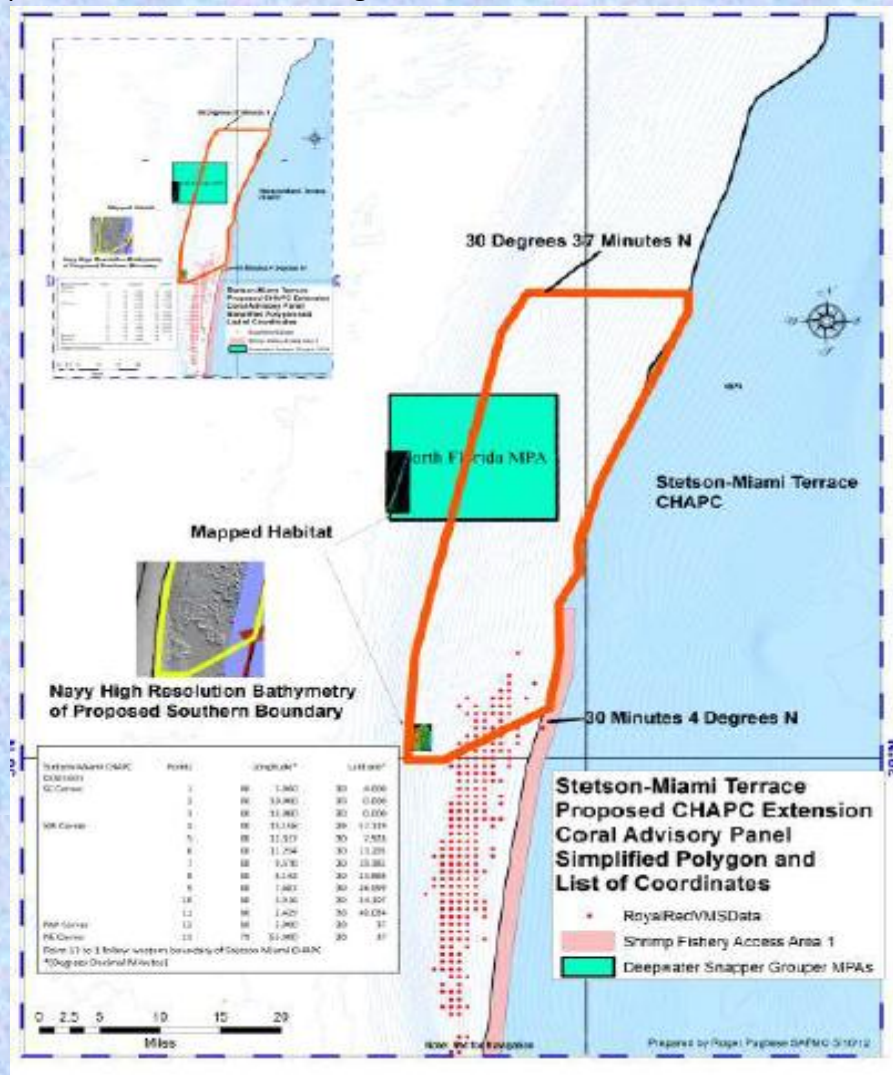
**Sub-Alternative 2a. Modify the northern boundary of the Oculina Bank HAPC: from the current northern boundary of the Oculina HAPC (28° 30'N) to 29° 43.5'N. The west and east boundaries would follow the 60 meter and 100 meter depth contour lines, as represented in the simplified polygon in Figure 1. Total area = 430 square nautical miles.
(Coral AP Recommendation - May 10, 2012)**

Action 1. Expand boundaries of the Oculina Bank HAPC. Motion was made by Anne Deaton to recommend to the Council that Alternative 3 (map and text below from briefing the AP's materials) for public scoping. The motion was seconded by Dr. Chris Elkins Ellis and passed without a dissenting vote.



Alternative 3. Modify the western boundary of the Oculina Bank HAPC from 28° 4.5'N to the north boundary of the current Oculina HAPC (28° 30'N). The east boundary would coincide with the current western boundary of the Oculina HAPC (80° W). The west boundary would follow the 80° 03'W longitude between 28° 30'N and 28° 16'N which is the west border of the Oculina HAPC satellite regions then follow approximately the 60 meter contour as represented in the simplified polygon in Figure 5. Total area = 76 square nautical miles. (Coral AP recommendation - May 10, 2012)

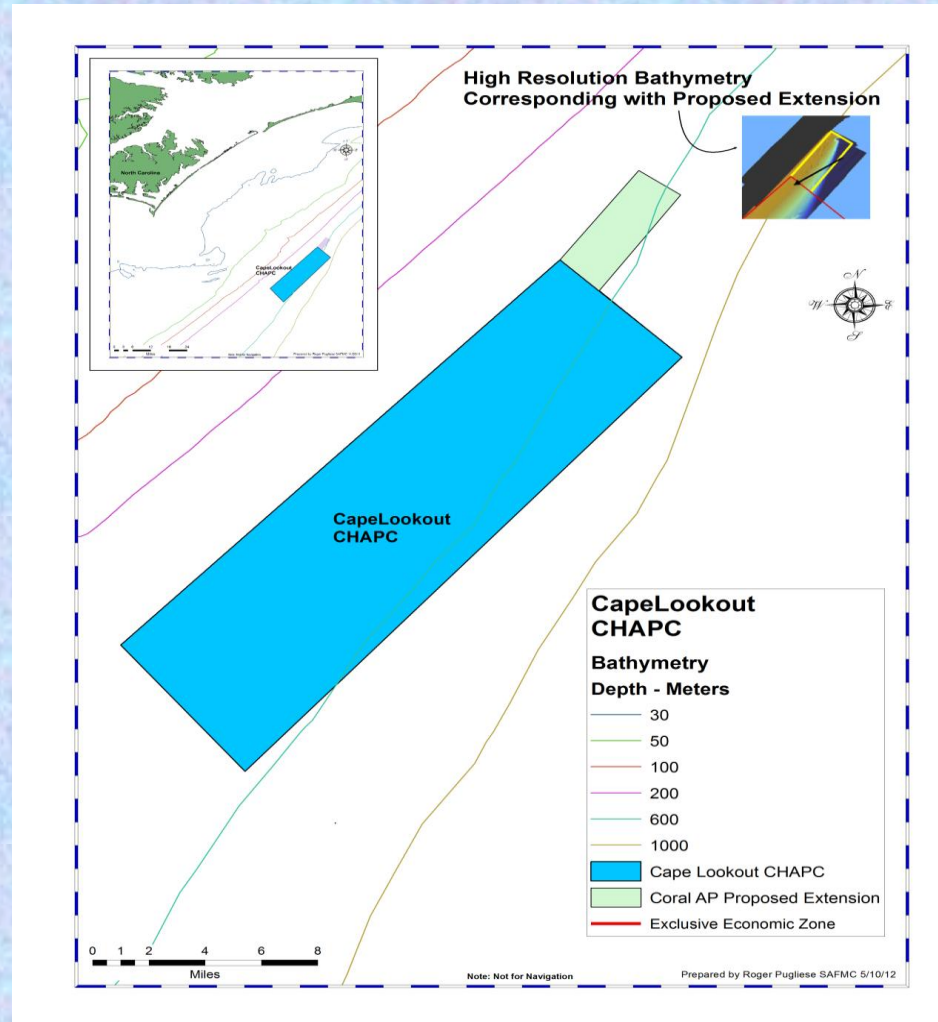
Action 2. Expand Stetson-Miami Terrace Coral HAPC to incorporate a Lophelia site off Jacksonville. Motion was made to recommend to the Council that Alternative 3 as amended by the Coral Advisory Panel (map and text below from briefing the AP's materials) for public scoping. The motion was seconded and passed without a dissenting vote.



(Coral AP Recommendation May 10, 2012)

Alternative 3. Modify the Coral AP recommendation for expanding the Stetson-Miami Terrace Coral HAPC to include area of mapped habitat within the expansion, and exclude areas of royal red fishery activity based on VMS data (Figure 6b).

Action 3. Expand the northern boundary of the Cape Lookout HAPC. Motion was made by to recommend to the Council that Alternative 2 (map and text below from briefing the AP's materials) for public scoping. The motion was seconded and passed without a dissenting vote.



Alternative 2. Extend the northern boundary to encompass the area identified by the following coordinates (**Figure 7**):

Latitude	Longitude
34°24.6166'	75°45.1833'
34°23.4833'	75°43.9667'
34°27.9'	75°42.75'
34°27.0'	75°41.5'

Habitat AP Member Input Post Webinar: Navy Bathymetry and Habitat Characterization

