

**NOAA**  
**FISHERIES**

Office of Law  
Enforcement  
Southeast  
Division

# Oculina Evaluation Team Enforcement Update

2007 – 2013

Special Agent Richard Chesler, MS  
Port Orange, FL Field Office

February 13, 2014

# Enforcement Update Overview

Review Oculina Evaluation Plan, Section 3.0 Law Enforcement Plan

Present updated enforcement data for the period of 2007 - 2013

Provide recommendations to the Oculina Closed Area Evaluation Team

---

# Overview: Strategy and Efforts

Enforcement Principle 1 – Vessel Monitoring System (VMS)

Principle 2 – Cooperative Enforcement

Principle 3 – Increase Enforcement Presence

Principle 4 – Enforcement Reports

Principle 5 – Outreach and Education

# principle 1 - VMS

monitor

Incursions

- Interdictions

intelligence

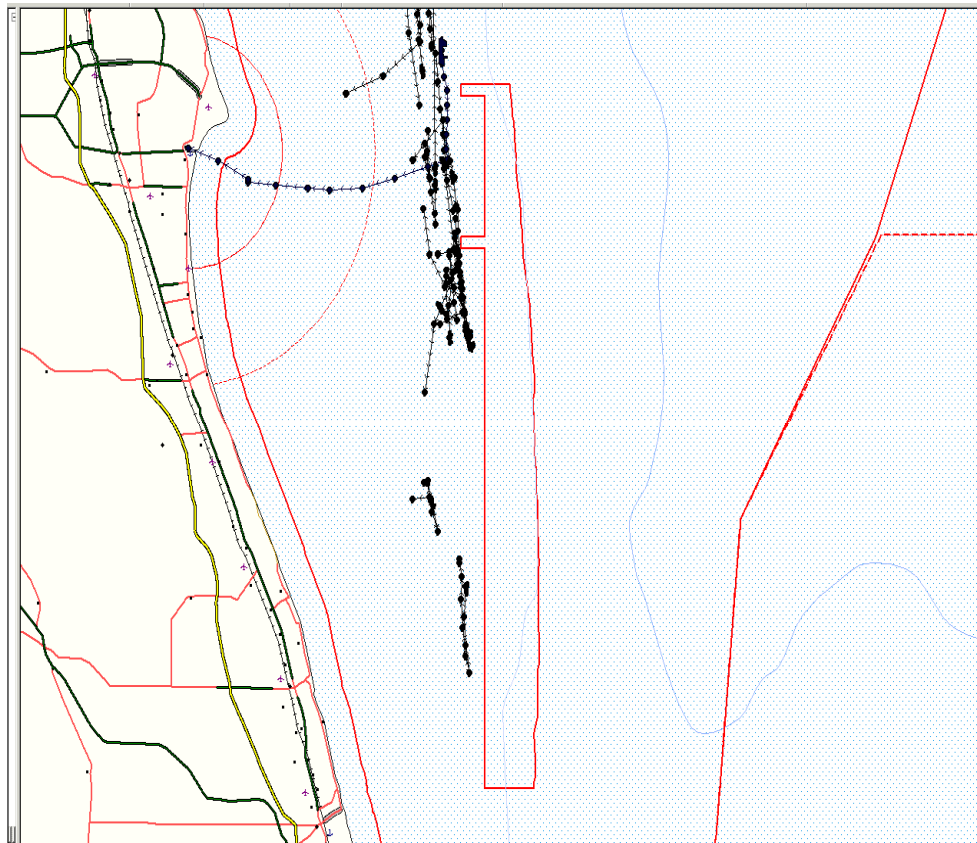
Increased fishing activity

planning

Patrol activities

investigations

Follow-up inspections and  
interviews



# Principle 2 – Cooperative Enforcement

## Patrol

- USCG and FWC

## Investigations

- NOAA OLE (OLE)

## Intelligence

- VMS
- Contacts

## Training



# Principle 3 – Increase Enforcement Presence

## Surge operations

- USCG, FWC, OLE
- Cooperative enforcement utilizing each agency's assets and personnel

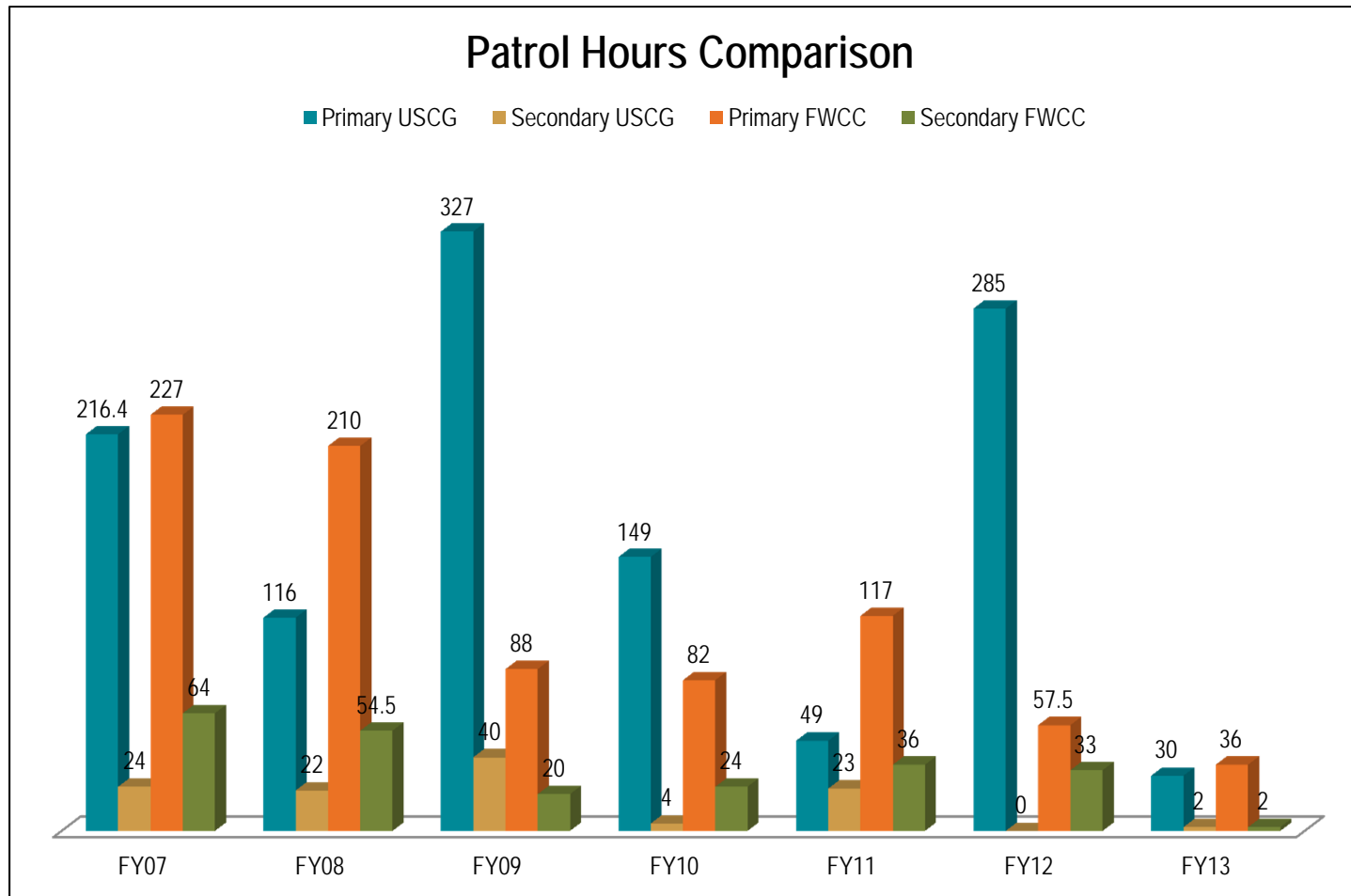


## Patrol activity

- USCG and FWC
- Vessels, boats, and aircraft



# Patrol Statistics



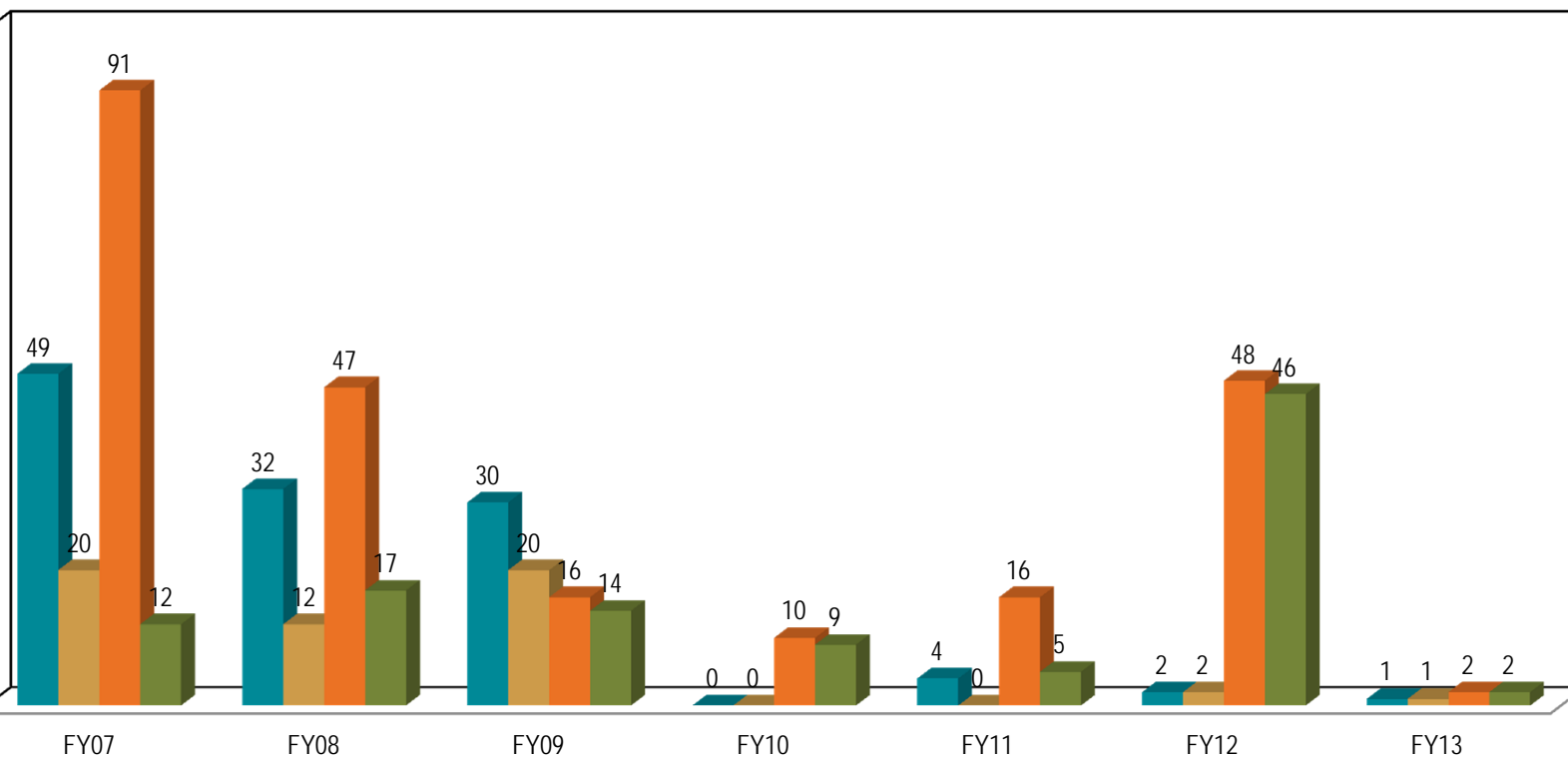
S: FY07 – FY13

Secondary – USCG asset in OHAPC/ECA on other mission, FWC asset in transit to OHAPC/ECA

# Detections and Boardings Statistics

## OHAPC Detections and Boardings

■ Comm FV Det. ■ Comm FV Board ■ Rec FV Det. ■ Rec FV Board



NOTES: FY07 – FY 13

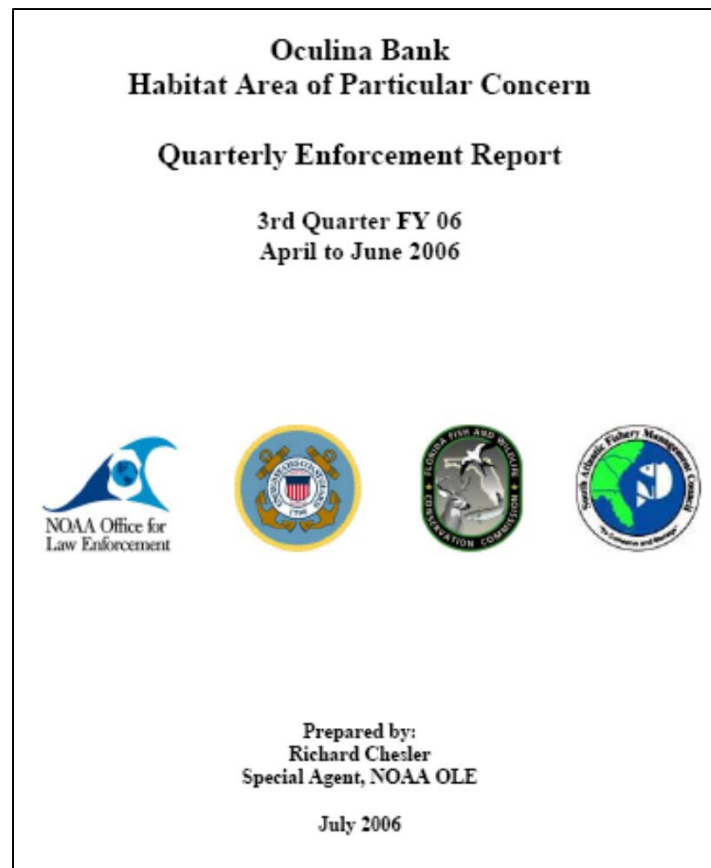


# Principle 4 – Enforcement Reports

OLE agent collects patrol, sightings, boardings, and violations data and prepares quarterly report

Report highlights case dispositions, media stories, outreach activities, training, and patrol activities

Quarterly report presented to SAFMC at each meeting



# Principle 5 – Outreach and Education

Enforcement partners support outreach and education efforts

Distribute SAFMC and Oculina regulations

- Outreach Events
  - Fishing shows and tournament meetings
- On patrol
  - Recreational anglers in or near OECA
  - Commercial fishermen




# Outreach and Education continued

Participate in  
outreach/education activities

Issue news releases for  
Oculina enforcement cases  
and patrol activities



 **NOAA FISHERIES:**  
Office for Law Enforcement

[Office Home](#) | [Northeast](#) | [Southeast](#) | [Alaska](#) | [Northwest](#) | [Southwest](#) | [Pacific Islands](#)

Department of Commerce  
National Oceanic and Atmospheric Administration  
NOAA Fisheries Service  
- Office for Law Enforcement

**FOR IMMEDIATE RELEASE**  
November 3, 2005

**CONTACT:**  
Mark Oswell  
(301) 427-2300

**RECREATIONAL FISHERMAN FINED FOR OCULINA BANK CLOSED AREA VIOLATION**

On August 20, 2005, a joint NOAA Fisheries Service - Office for Law Enforcement (OLE) and U.S. Coast Guard patrol within the Oculina Bank Experimental Closed Area netted a 25' sport fishing vessel fishing within the closed area.

A Coast Guard boat from Station Fort Pierce, Fla. intercepted the vessel over a mile inside the Closed Area. Upon being boarded by an OLE agent and USCG officer, Jeffrey Johnson (owner/operator), admitted to having snapper-grouper onboard. Fishing for or possessing snapper-grouper within the closed area is prohibited.

The Port St. Lucie (FL) fisherman was subsequently assessed a \$2,500 civil penalty for possessing snapper-grouper within the Experimental Closed Area. Johnson has 60 days from the date he is notified of this penalty to: pay the penalty, seek to have the assessment modified, or request a hearing before an administrative law judge to deny or contest the charge and the penalty assessed.

Six other sport fishing vessels were checked during the patrol of the closed area, and no other violations were detected. Vessel operators were provided snapper-grouper regulations brochures as part of ongoing OLE outreach and education efforts regarding Oculina Bank regulations.

---

## Areas for Improvement

### VMS

- Effective

### Cooperative Enforcement

- Improve patrol coordination between FL FWCC and USCG
- Increase inter-agency “ride-alongs”
- Establish semi-annual Oculina specific enforcement meeting/training

# Areas for Improvement

## Increase Enforcement Presence

- Utilize covert patrols in conjunction with overt patrols
- Obtain LMR mission hours or patrol under secondary mission (USCG)
- Patrol "Smarter"
  - Weather
  - Ramp/Marina checks



---

## Areas for Improvement continued

### Reporting

- Better recordkeeping by source agency
- Timely submission of reports

### Outreach

- Engagement of tournaments in Sebastian and Fort Pierce
  - Include Oculina rack card in captain's bags

---

## Recommendations

Adapt current law enforcement plan to Project Management format

- Establishes resources, outputs, outcomes, constraints, risks, reporting, and accountability

Determine enforcement burden with transit provision

- Mitigation strategies

Establish enforcement expectations

- Compliance metric

---

# Project Management Format

## Define Objective

- E.g., To increase compliance with Oculina Regulations

## Target Outcomes

- Increased compliance with Oculina Regulations

## Performance Metric

- Linked to Target Outcomes

## Outputs

- Linked to Outcomes, deliverables
  - Patrols and Monitoring
  - Compliance Assistance



---

## Project Management Format continued

### Reporting Requirements

- Frequency, format, to whom (Quarterly Report)

### Resources

- Assets, personnel

### Risks and Risk Management

- Identify risks and mitigation strategies
  - E.g., rock shrimp trawling, recreational SNG poaching

### Quality Control

- Reviews, frequency

A large school of blue fish, possibly mackerels, swimming in the ocean. The fish are densely packed and moving in a coordinated manner. The word "Questions?" is overlaid in white text in the center of the image.

Questions?