

Measures to Consider in Comprehensive Ecosystem-Based Amendment 3 (CE-BA 3)



Anna Martin
SAFMC staff

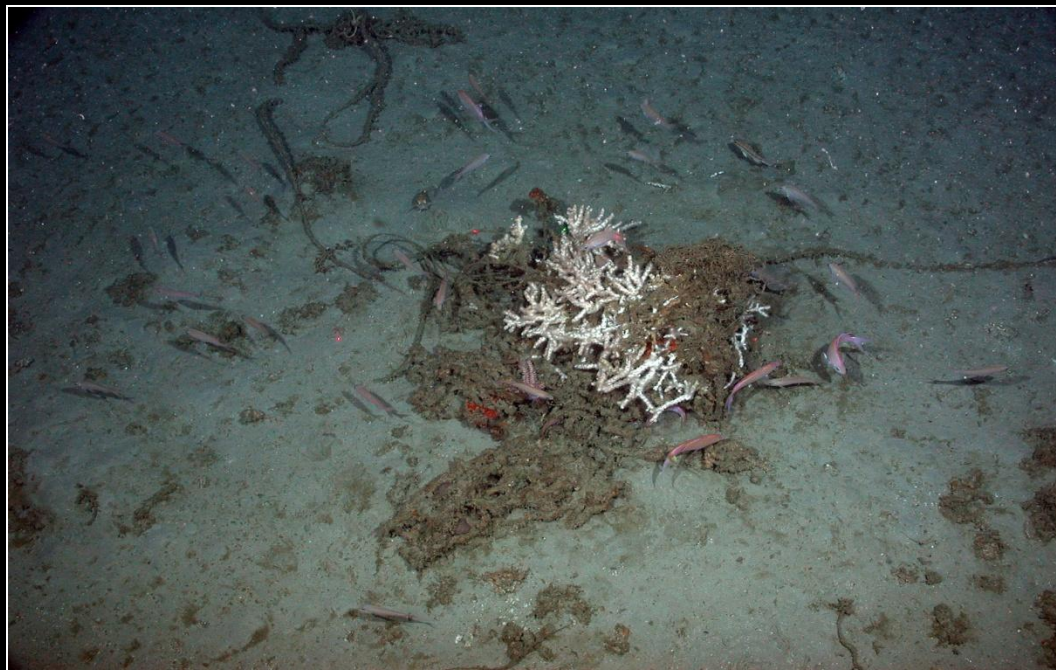


- ◆ HAPC Expansion
 - ◆ Oculina Bank
 - ◆ Jacksonville *Lophelia* site
 - ◆ Cape Lookout
- ◆ Snowy MPA Observations
- ◆ Bangsticking Prohibition – NC EEZ
- ◆ Wreckfish Fishery Impacts on Bottom Habitat
- ◆ Speckled Hind and Warsaw protections



Oculina HAPC

- ◆ June 2011 DSC Expedition – discovery of new mounds (~75 mounds) north of HAPC
- ◆ New sonar maps and ROV dives explore areas 260-328' depths
- ◆ Outer continental shelf-edge between St. Augustine and Cape Canaveral



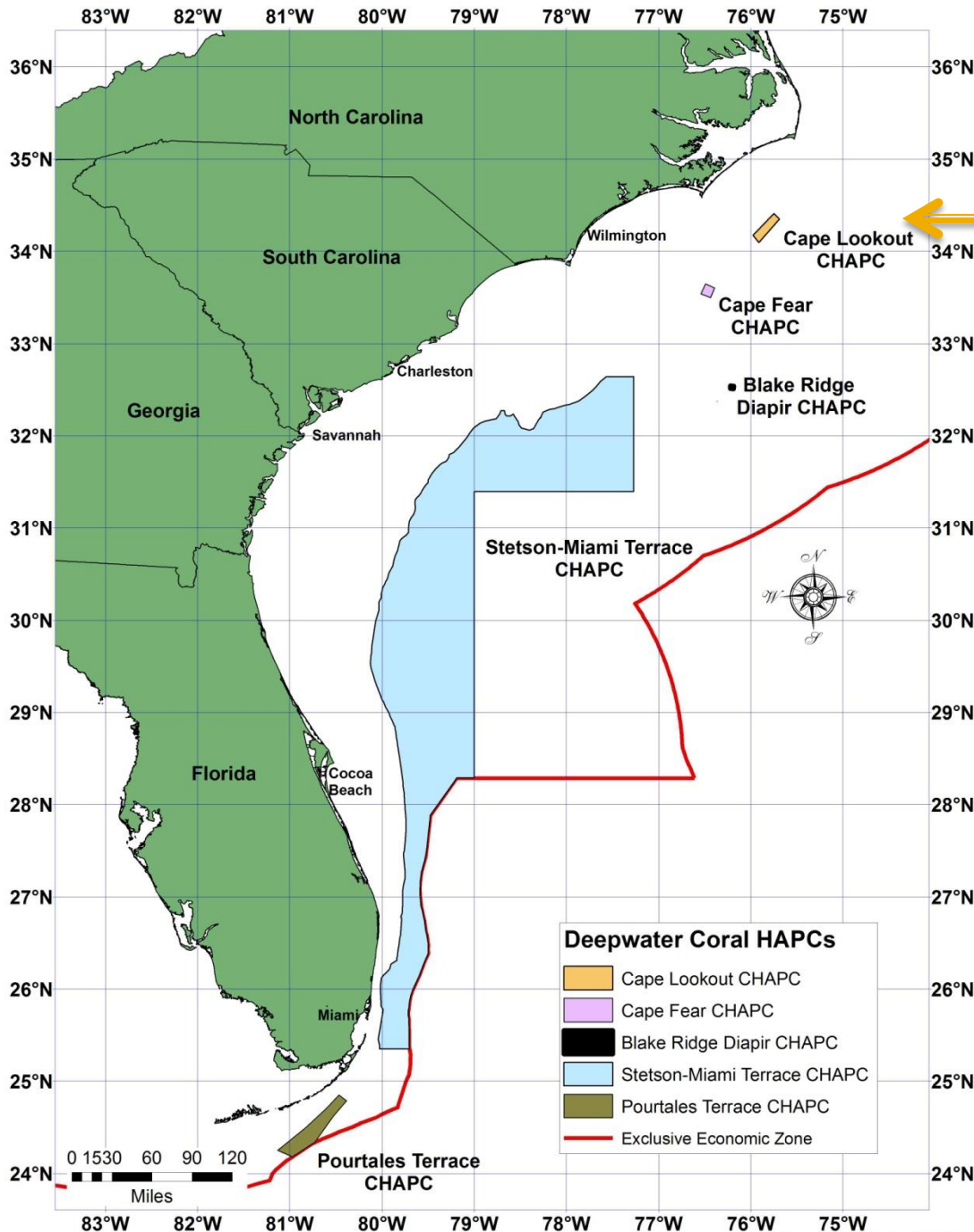
Lophelia site off Jacksonville

- ◆ DSC Expeditions 2010 and 2011
- ◆ Discovery of site in 656' depths represents shallowest known community in SE region (typically found in 980-13,000' depths)
- ◆ Exists outside of Stetson Miami Terrace HAPC



Steve Ross

Cape Lookout HAPC



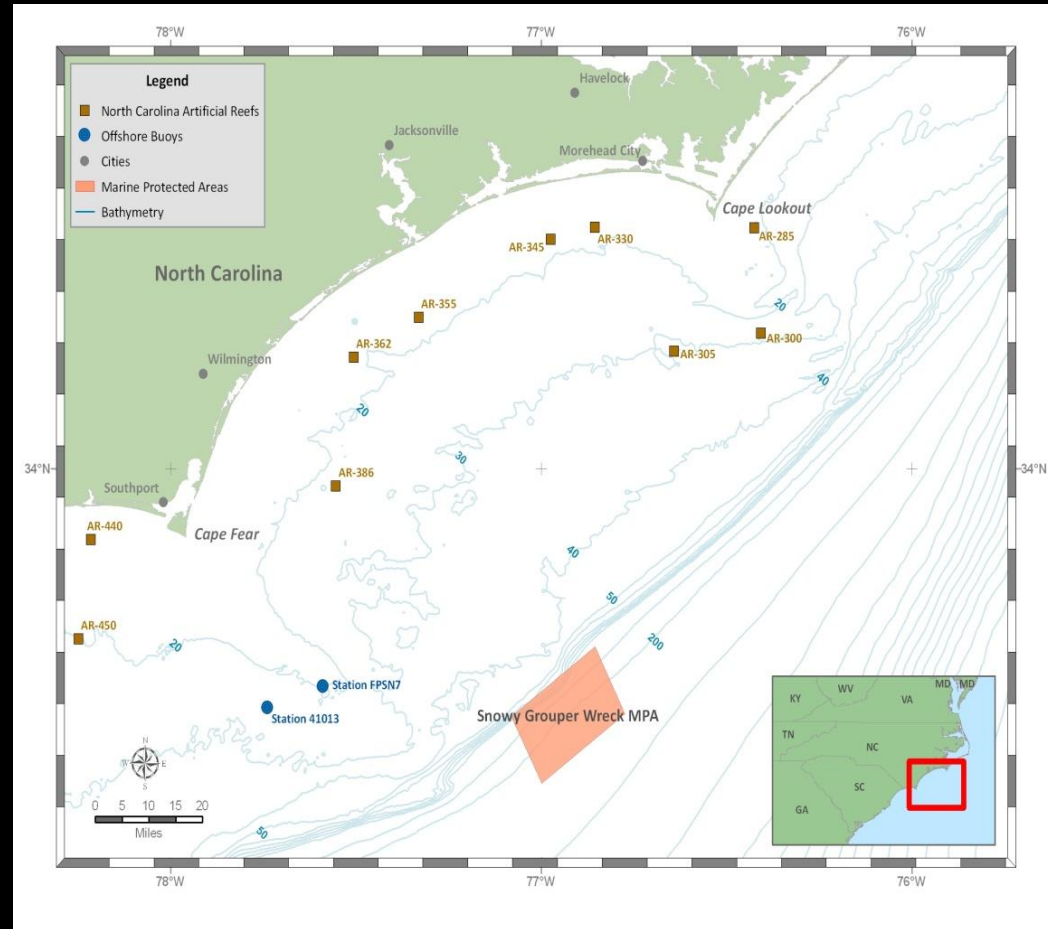
- DSC Expedition 2010 (Ross, Brooke)

- *Lophelia* presence in areas north of current HAPC

- Coral AP, October 25-26th

Snowy Wreck MPA

- ◆ 2011 Nancy Foster multi-beam cruise
- ◆ Wreck larger than current designation affords
- ◆ *Lophelia* occurrence, extent unknown
- ◆ Larger survey, ROV analysis of area recommended



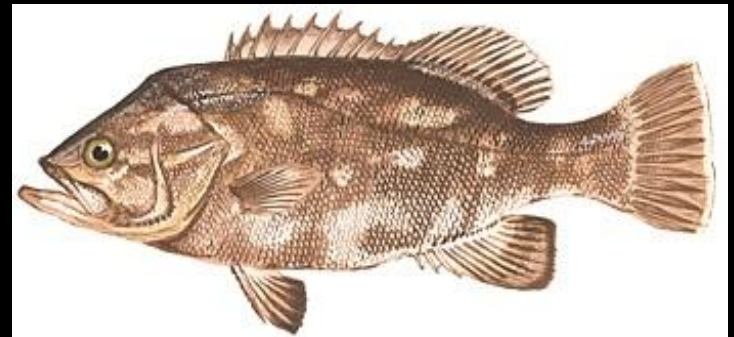
Bangsticking Prohibition

- ◆ NC DMF Issues Paper (January 2011), concern over localized depletion of SG species
- ◆ NC Marine Fisheries Commission letter to Council (March 2011)
- ◆ SG Amendment 7 (1994) prohibited use of bangsticks in EEZ off SC
- ◆ Consideration of prohibition off other SA states?
- ◆ SG AP, October 5-6th



Wreckfish Fishery – Impacts on Bottom Habitat

- ◆ CE-BA 1 issue: Do gear impacts from commercial wreckfish fishery jeopardize integrity of deepwater coral habitat?
- ◆ Association with coral mounds, *Lophelia* colonies, spawning aggregations documented on Miami Terrace HAPC
- ◆ Impacts from recreational deep drop fisheries?



Speckled Hind, Warsaw Grouper Protections

- ◆ Regulatory Amendment 11 analysis, removal of 240' closure
- ◆ Targeted measures for speckled hind and Warsaw grouper (undergoing overfishing)
 - ◆ Expansion of current MPAs
 - ◆ Spawning area closures for speckled hind
- ◆ SEFSC MPA study

