

Science, Service, Stewardship



Overview of Port of Miami Coral, Coral Reef, and Hardbottom Impacts

SAFMC Meeting in Charleston, SC

Habitat and Ecosystem-Based Management Committees

September 18, 2014

**NOAA
FISHERIES
SERVICE**



Government Cut

South Pointe Park

A1A

Government Cut

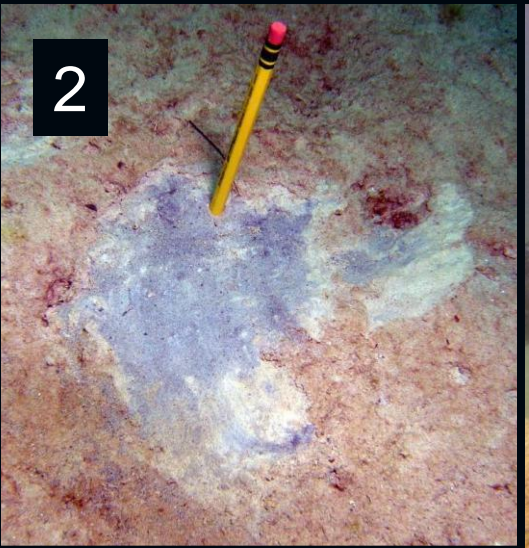
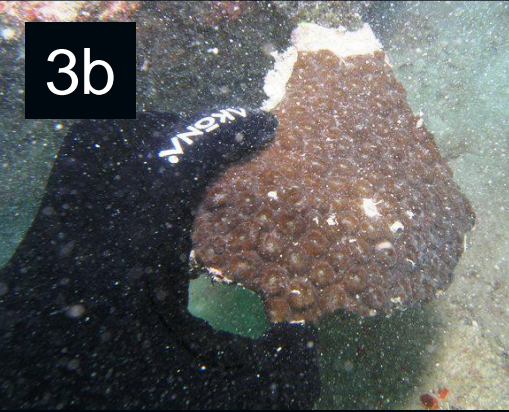
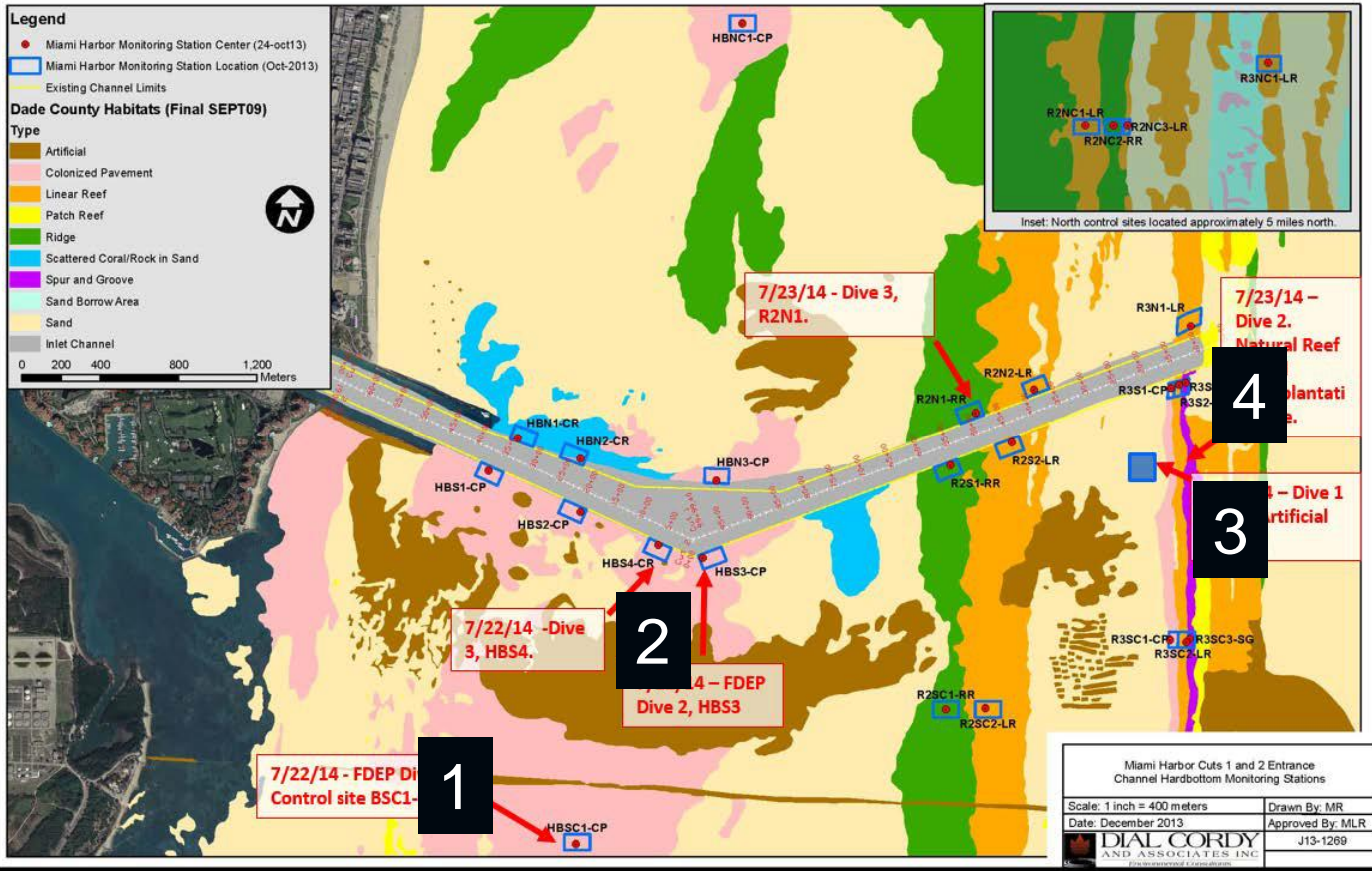
Dredge Texas

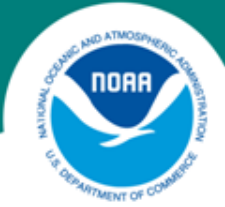
Hopper Barge

Spider Barge

1 mile

1000 ft
500 m





Observations Reported

- Large areas of hardbottom covered with 1 to 14 cm, stress indices have high values, area impacted still TBD
- Fine sediment over hardbottom and sea fans may have stimulated cyanobacterial growth
- Sponges detach when base covered by sediments
- Survival of smaller buried scleractinian corals and octocorals unlikely, hopeful about the larger corals



Potential EFH Responses

- “If NMFS becomes aware of a Federal action that would adversely affect EFH, but for which a Federal agency has not initiated an EFH consultation, NMFS may request that the Federal agency initiate EFH consultation, or NMFS will provide EFH Conservation Recommendations based on the information available.” 50 CFR 600.925(b)
- “Under section 305(b)(3) of the Magnuson-Stevens Act, Councils may comment on and make recommendations to the Secretary and any Federal or state agency concerning any activity or proposed activity authorized, funded, or undertaken by the agency that, in the view of the Council, may affect the habitat, including EFH, of a fishery resource under its authority.” 50 CFR 600.930