



**NOAA**  
**FISHERIES**  
SEFSC

# Discard Reliability Update from SEFSC

October 2023

# Discard Reporting Rates

- 20% of the Coastal fleet is randomly selected each year to report discards to the Discard Logbook Program, in addition to effort and landed catch to the Coastal Logbook Program
- Over the years, many vessels have reported ‘No Discards’ for an overwhelming amount of trips
  - In the South Atlantic, no discard trips account for 72% of all Discard Logbook trips
  - The average over the last 5 years has increased to 77% of reports



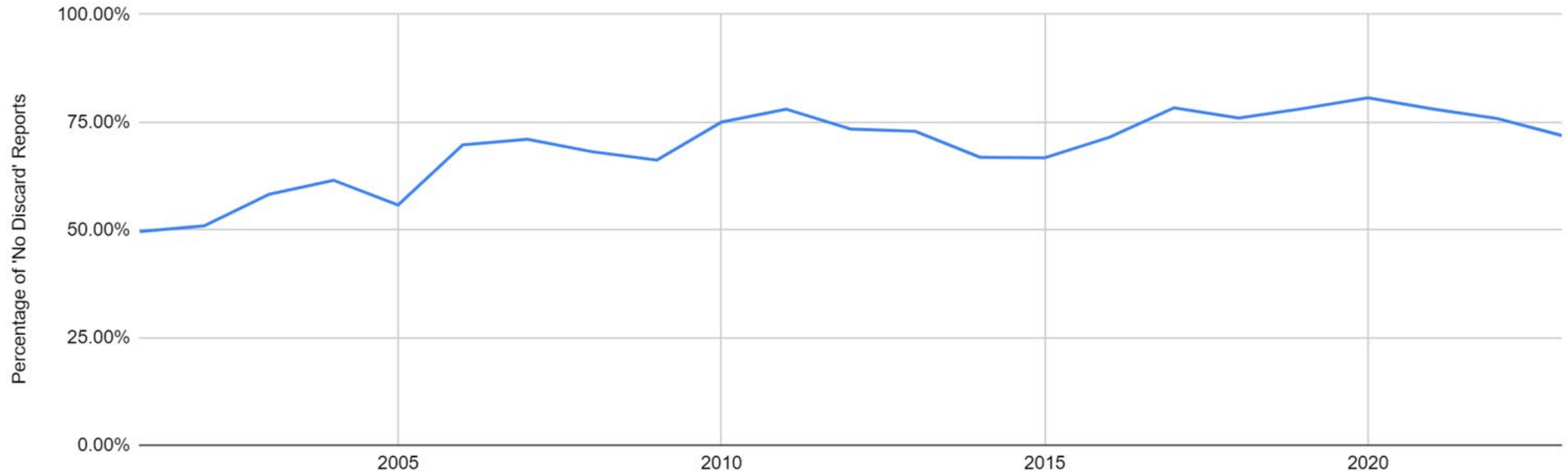
## Total Discard Reports and Percentage of Discard vs No Discard Trips for Selected Vessels by Year in the South Atlantic

| Land year | Total discard reports | Number of discard reports that reported no discards and were selected | Number of discard reports that reported discards and were selected | Percentage of discard reports of no discards and selected | Percentage of discard reports that reported discards and were selected |
|-----------|-----------------------|---|--|---|--|
| 2001      | 1,097                 | 544   | 553  | 49.59%  | 50.41%   |
| 2002      | 2,457                 | 1,251   | 1,206  | 50.92%  | 49.08%   |
| 2003      | 2,947                 | 1,716   | 1,231  | 58.23%  | 41.77%   |
| 2004      | 1,792                 | 1,102   | 690  | 61.50%  | 38.50%   |
| 2005      | 1,740                 | 970   | 770  | 55.75%  | 44.25%   |
| 2006      | 1,450                 | 1,011   | 439  | 69.72%  | 30.28%   |
| 2007      | 4,382                 | 3,112   | 1,270  | 71.02%  | 28.98%   |
| 2008      | 8,206                 | 5,590   | 2,616  | 68.12%  | 31.88%   |
| 2009      | 3,800                 | 2,515   | 1,285  | 66.18%  | 33.82%   |
| 2010      | 9,708                 | 7,281   | 2,427  | 75.00%  | 25.00%   |
| 2011      | 9,893                 | 7,717   | 2,176  | 78.00%  | 22.00%   |
| 2012      | 8,398                 | 6,162   | 2,236  | 73.37%  | 26.63%   |
| 2013      | 7,959                 | 5,800   | 2,159  | 72.87%  | 27.13%   |
| 2014      | 8,250                 | 5,514   | 2,736  | 66.84%  | 33.16%   |
| 2015      | 7,320                 | 4,883   | 2,437  | 66.71%  | 33.29%   |
| 2016      | 9,500                 | 6,790   | 2,710  | 71.47%  | 28.53%   |
| 2017      | 9,708                 | 7,604   | 2,104  | 78.33%  | 21.67%   |
| 2018      | 7,131                 | 5,415   | 1,716  | 75.94%  | 24.06%   |
| 2019      | 7,081                 | 5,534   | 1,547  | 78.15%  | 21.85%   |
| 2020      | 6,265                 | 5,052   | 1,213  | 80.64%  | 19.36%   |
| 2021      | 6,472                 | 5,051   | 1,421  | 78.04%  | 21.96%   |
| 2022      | 4,766                 | 3,614   | 1,152  | 75.83%  | 24.17%   |

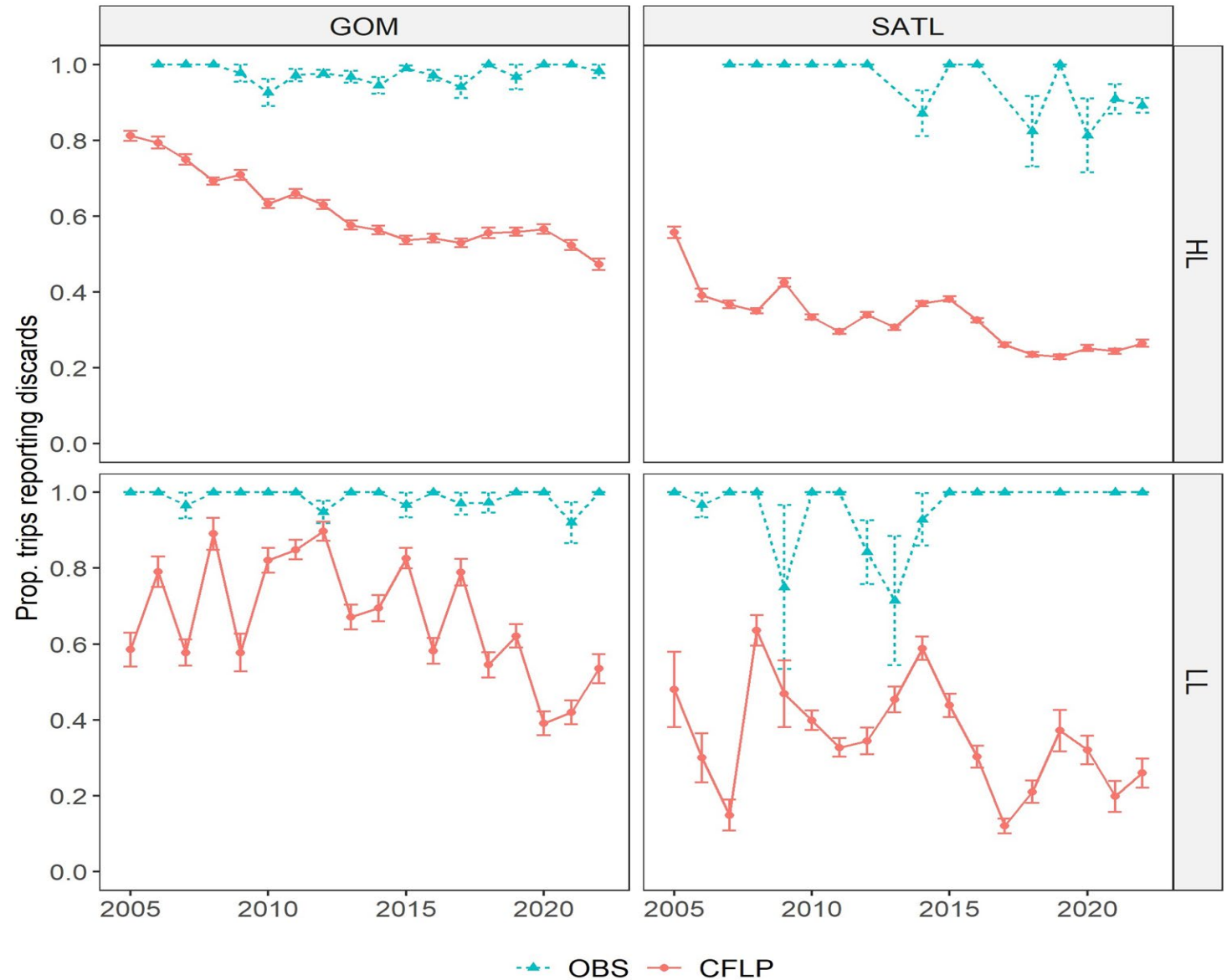


# Zero Discard Reporting Rates

Percentage of 'No Discard' Reports Over Time in the South Atlantic



# Proportion of trips reporting discards: Observer vs Logbook



# Discard Logbook vs Observer Data

- The proportion of trips reporting discards in the discard logbook has steadily been decreasing over time.
- Whereas in the observer data, often a trip will report a discard of some species with the percentage of trips reporting a discard at over 80%.
- The percentage of logbook reported trips with discards is consistently lower, and has declined to less than 40% of trips in recent years for both handline and longline gear.



# Discard Reliability

- NOAA's SEFSC has formed a Discard Reliability Work Group to address these issues
- **Current and future work include:**
  - Investigating zero discard reporting
  - Documenting historic discard methodology
  - Improving the discard estimation methodology using discard logbook data
  - Investigating the feasibility of using observer data to estimate discards in the South Atlantic

