



March 6, 2020

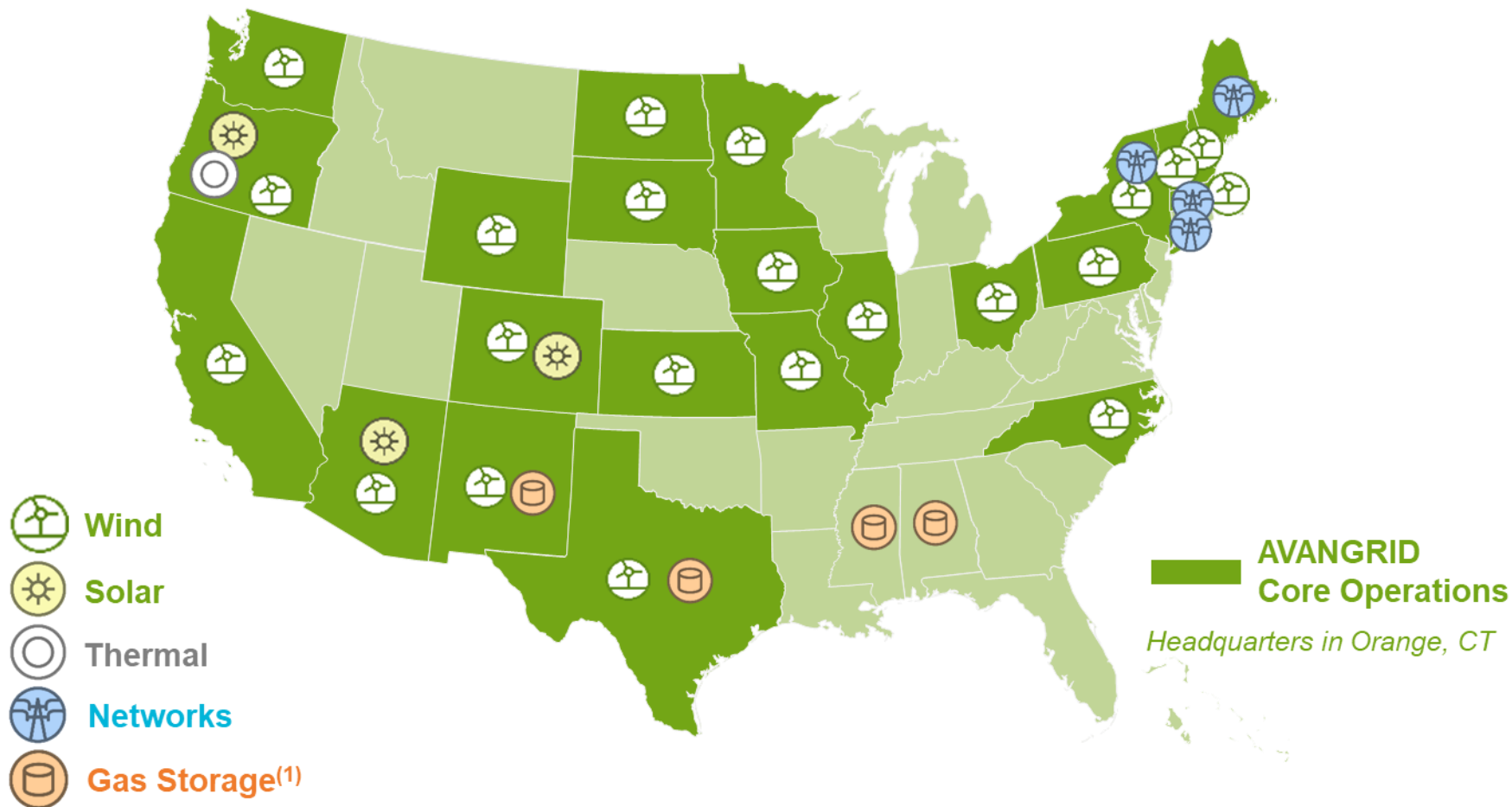
Kitty Hawk Offshore Wind

AVANGRID's Geographic Presence

~ \$32 billion in assets with a presence in 27 states

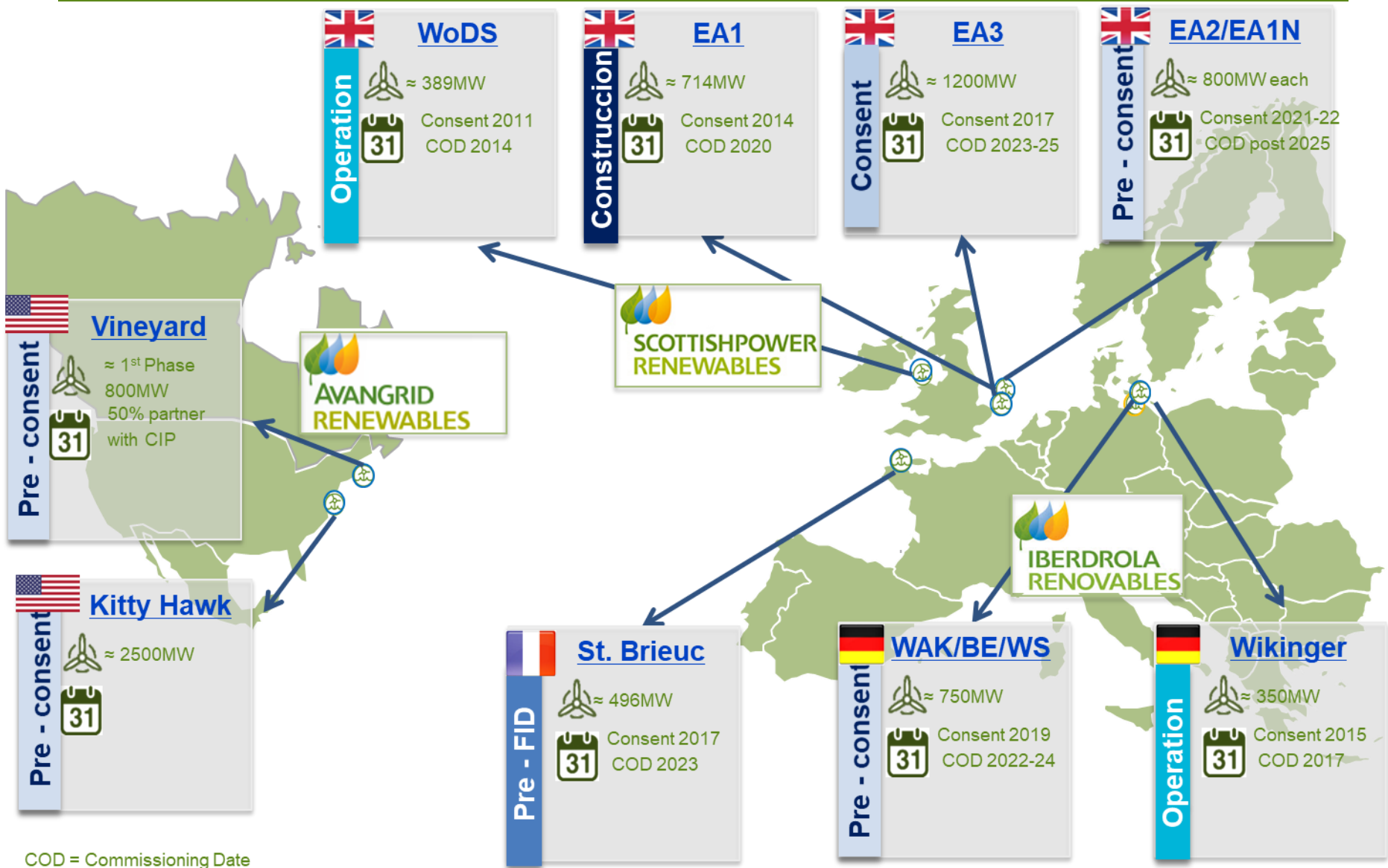
3rd largest wind operator in the U.S.

> 6 GW wind & solar in operation



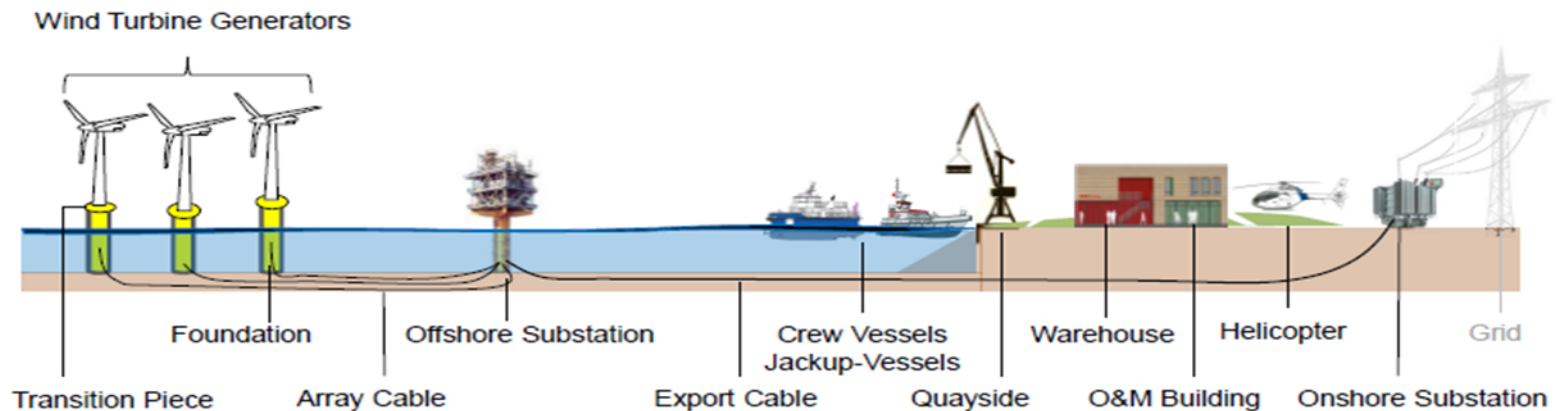
(1) Under strategic review

Offshore pipeline overview Iberdrola Group



Anatomy of an Offshore project

Complex power plants located far from shore



- Marine environment: sea waves, seabed mobility, corrosion, weather downtime
- Specific Health and Safety risks and requirements
- Huge scale of operations

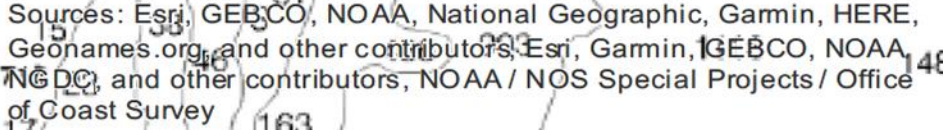
Key technological decisions are taken 3 to 5 years before actually implemented

The map displays the proposed 230 kV transmission line route from the Kitty Hawk area northward. Key locations and distances are indicated:

- Rudee Inlet VA:** 36nm (68km) from Project
- Corolla, NC:** 24nm (44km) from Project

Other locations shown include Virginia Beach, Landstown, Shawboro, Aydtetz, and Kitty Hawk. The map also features the Atlantic Ocean and various local roads and landmarks.

Sources: Esri, HERE, DeLorme, Intermap, increment P Corp., GEBCO, USGS, FAO, NPS, NRCAN, GeoBase, IGN, Kadaster NL, Ordnance Survey, Esri Japan, METI, Esri China (Hong Kong), swisstopo, MapmyIndia, © OpenStreetMap contributors, and the GIS User Community

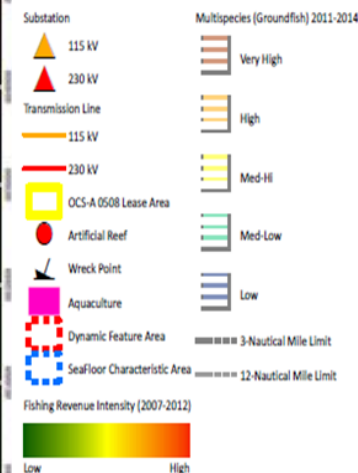


Kitty Hawk Offshore Wind Project Avangrid Renewables

CIA: Fishing



DRAFT



REFERENCE MAP



Planned activities offshore NC & VA

2018

Planning, assessment & stakeholder outreach

2019

Planning, assessment & stakeholder outreach

Aerial Surveys of wind energy area – Avian, Marine Mammals, Sea Turtles, Fish

Marine geophysical, geotechnical, & benthic reconnaissance surveys

SAP submittal

2020

Planning, assessment & stakeholder outreach

Aerial Surveys of wind energy area – Avian, Marine Mammals, Sea Turtles, Fish

Marine geophysical, geotechnical, & benthic surveys of potential project area(s) & cable routes

SAP Approval/Buoy deployment

Potential

2021-2022

Planning, assessment & stakeholder outreach

Project permitting

2023 Onshore construction

2024-2025 Offshore construction

Targeted Fisheries Outreach

Communications Network and Nodes

- HMS Tournaments
- Marina Operators
- Regional Fishery Management Councils & Commission
- State Marine Fisheries Agencies (NC & VA)
- NMFS HMS
- Commercial Fleet Owners/Operators
- Commercial Fishery Associations & Recreational Leaders
- NMFS RAs

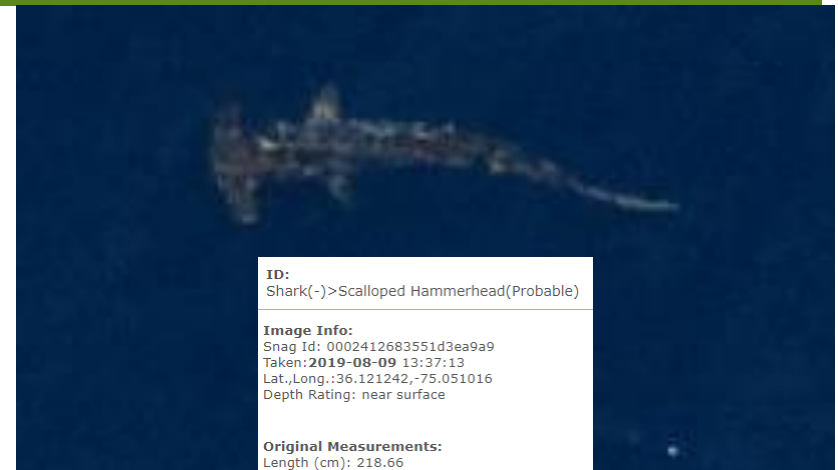
Targeted Fisheries Engagement

Oral History Interviews

- Description of historical fishing
- Gear types and operating modalities
- Seasonal movement of fish
- Historical characterization and trends
- Ecological and environmental observations
- Identification of other fisheries in the area

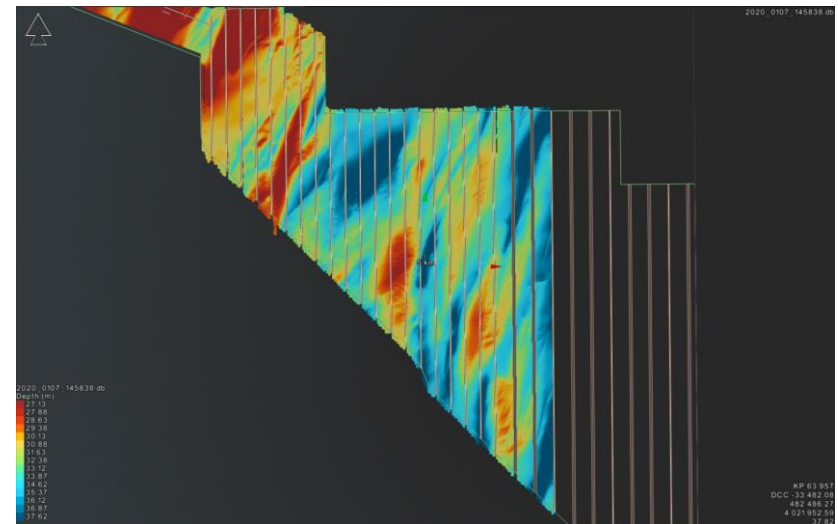
Developing Fisheries Baseline

- Characterizing fisheries transits
- Fisheries data requests-
Federal/State
 - Fisheries independent data (e.g. Surveys)
 - Fisheries dependent data (e.g. VTR, NEFOP)



Ongoing Survey Work

- Continued communication and coordination between survey vessels and fishing fleet



Benthic Grab Sampling



- Silty sand with medium to high compaction based on the SSS.
- Confirmed by the benthic grab sampling- fine sand (>96.5%)
- Total organic carbon was low, ranging from non detect to 3,400 mg/kg (0.34 percent).
- A total of 585 organisms were collected in BDA1, lowest practical taxonomic level (LPTL).
 - Primarily consisted of polychaete worms, amphipods, bivalves, and forams.
 - Species of anthropogenic importance observed included Atlantic rock crab, Atlantic jackknife clam, scallops, ocean quahog, and Atlantic surf clam.

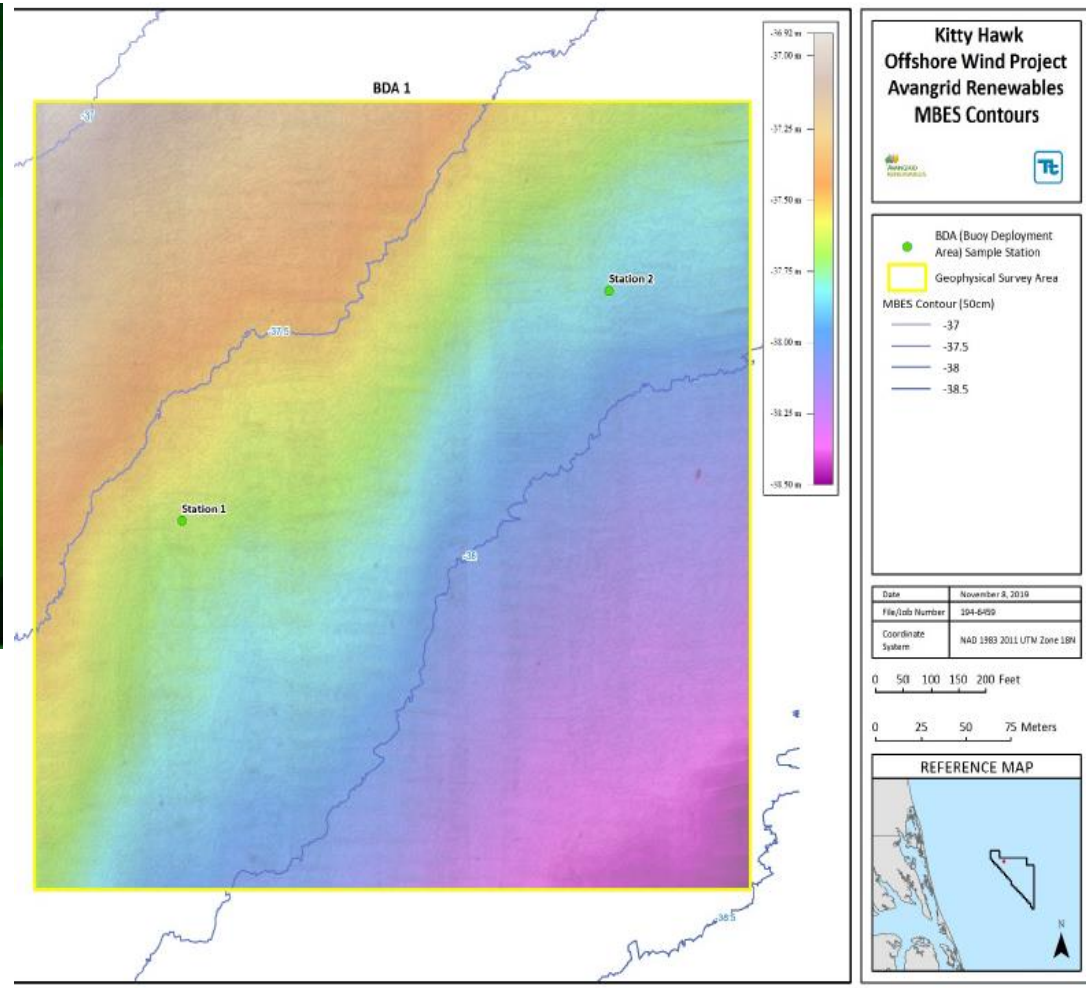
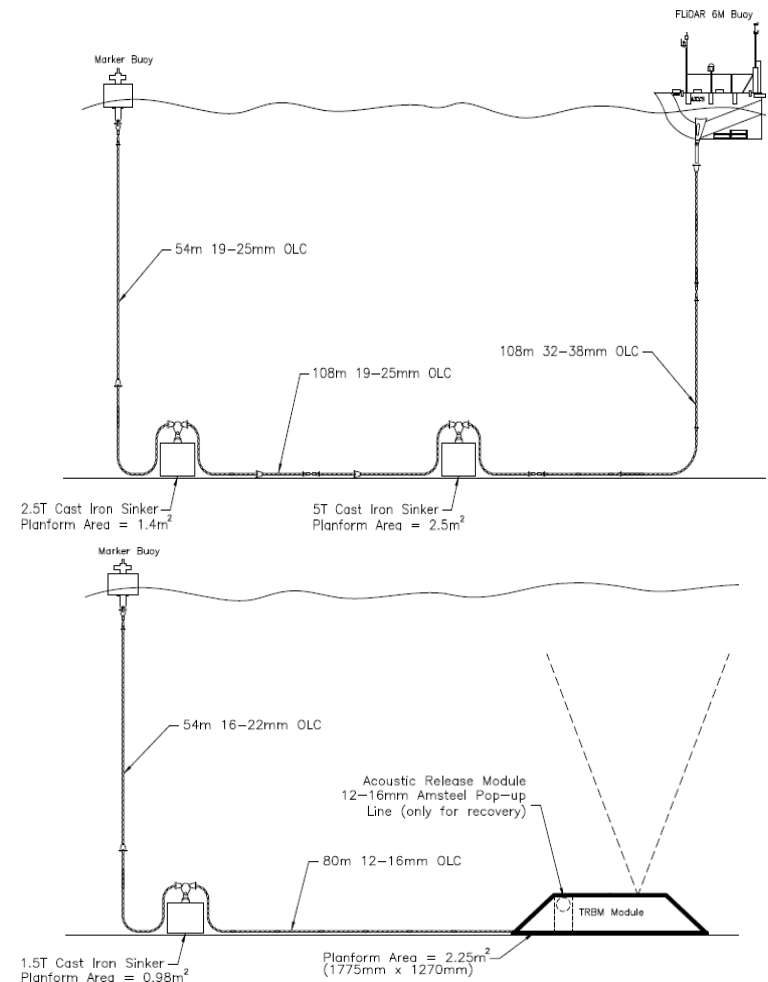
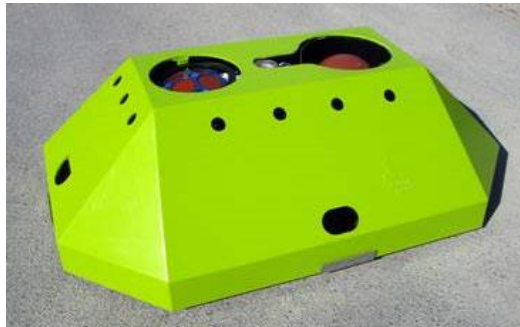


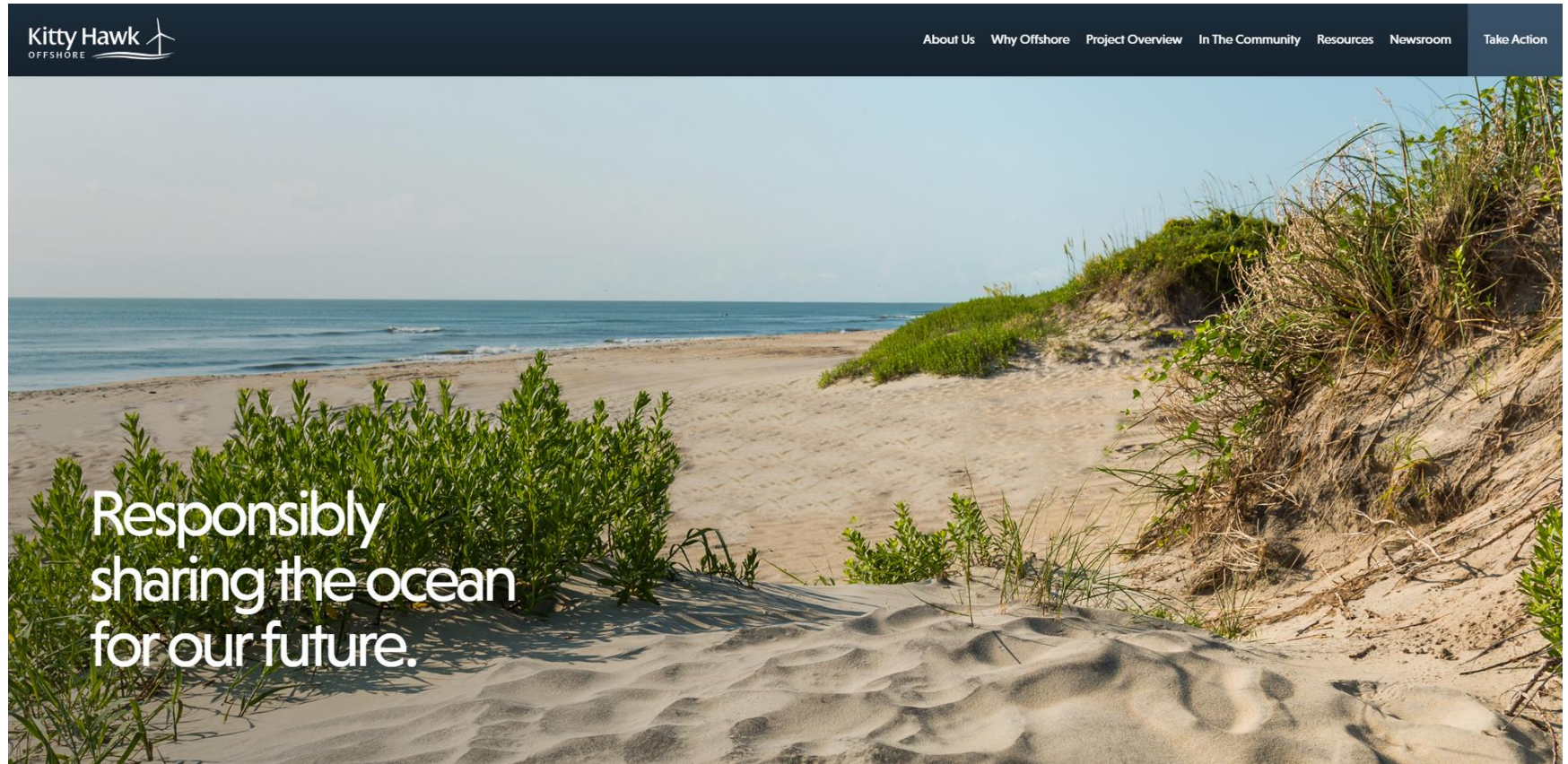
Figure 6-2 BDA1 MBES/SSS Mosaic

MetBuoy Deployment

- **MetBuoy Deployment – MAR/APR 2020**, pending Site Assessment Plan approval
- Communication and coordination with the fleet operating in the area



Project Updates



Updates available at www.avangridrenewables.com/kittyhawk

Preparing to launch new website in Q1 2020 at www.kittyhawkoffshore.com

Questions?

Craig Poff- Director of Development

craig.poff@avangrid.com

610.230.0332

Brian Benito Jr.- Permitting Manger

brian.benito@avangrid.com

503.382.0107

Rick Robins- Fisheries Liaison

757.876.3778

rick@fathomedgelimited.com

Dewey Hemilright- Fisheries Representative

252.473.0135