



NOAA
FISHERIES

HCD South Atlantic and Caribbean Branch

SAFMC Habitat and Environmental Protection
Advisory Panel Meeting

November 1, 2022

HCD South Atlantic and Caribbean Branch



Beaufort

--Fritz Rohde (FERC) --Twyla Cheatwood (FERC)
--Vacant

Charleston

--Cindy Cooksey --Kevin Mack (FERC)
--Pace Wilber --Jordy Wolfe (CRCP)

West Palm Beach

--Jocelyn Karazsia --Kurtis Gregg (FDOT)
--Xaymara Serrano (CRCP)

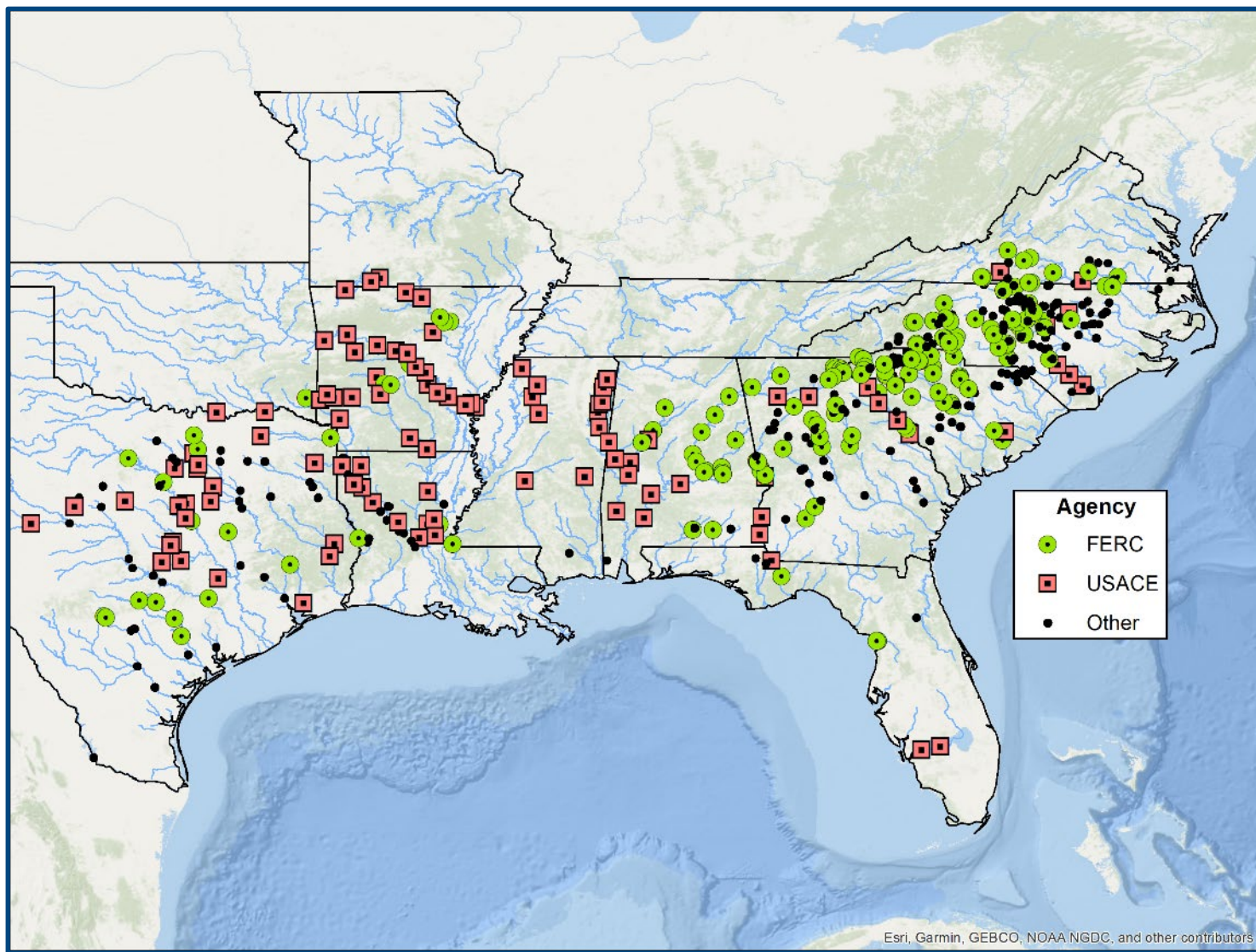
Puerto Rico

--Jose A. Rivera

St Croix

--Dinorah Chacin (CRCP)

Not Just EFH, We also Do Fish Passage . . .



Focal Species . . .

Gulf of Mexico Watersheds

Gulf Sturgeon **



Alabama Shad ***



American Eel ***



- ESA listed and under NMFS purview *
- ESA listed and under NMFS and FWS purview **
- Previously petitioned for ESA protection ***
- ESA Candidate Species ****

Atlantic Sturgeon *



Shortnose Sturgeon *



American Shad



Blueback Herring ****



Alewife ****

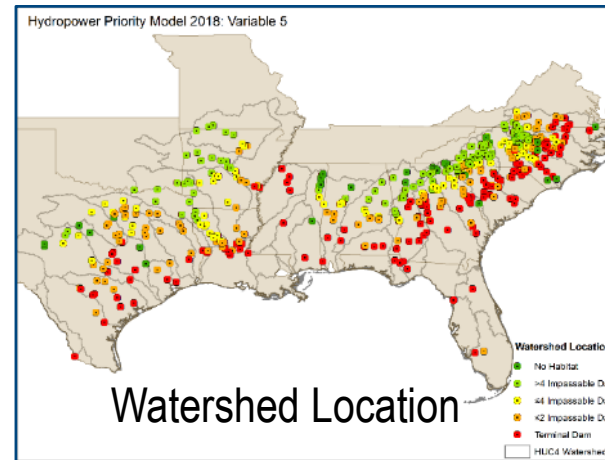
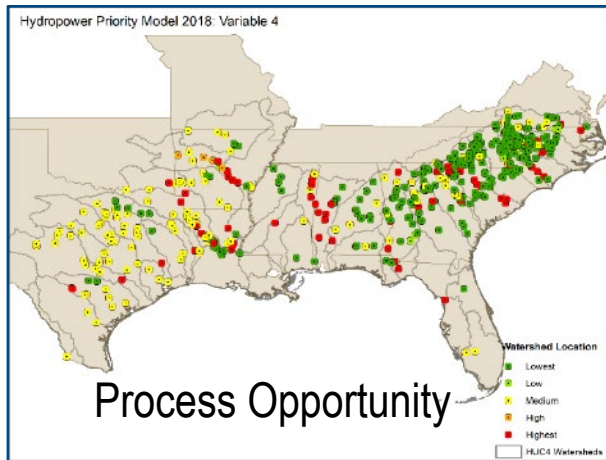
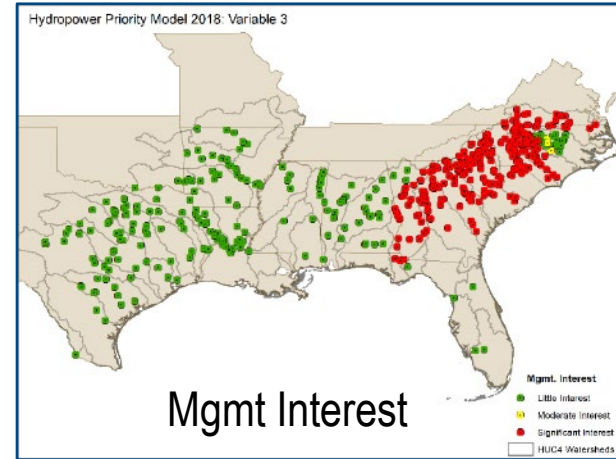
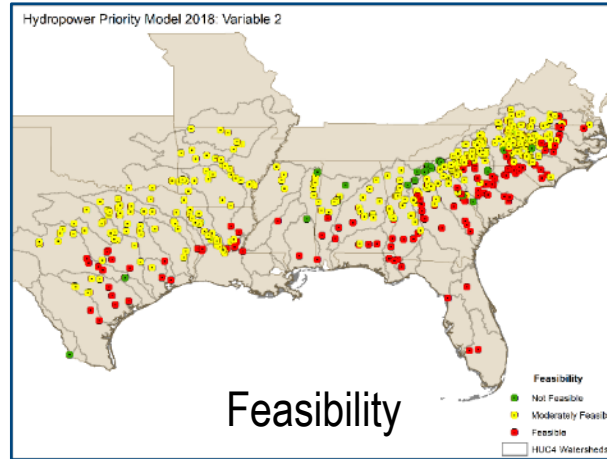
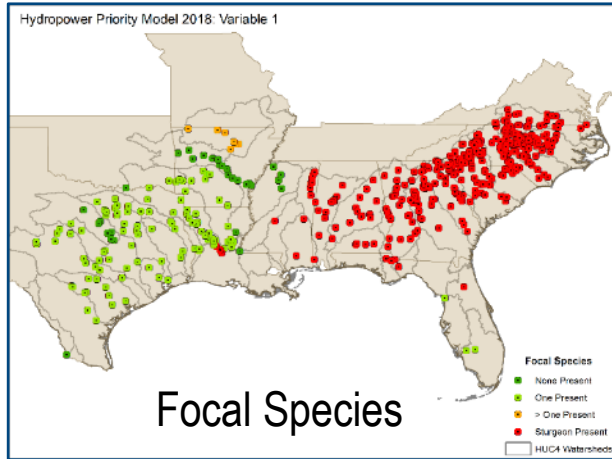


American Eel ***

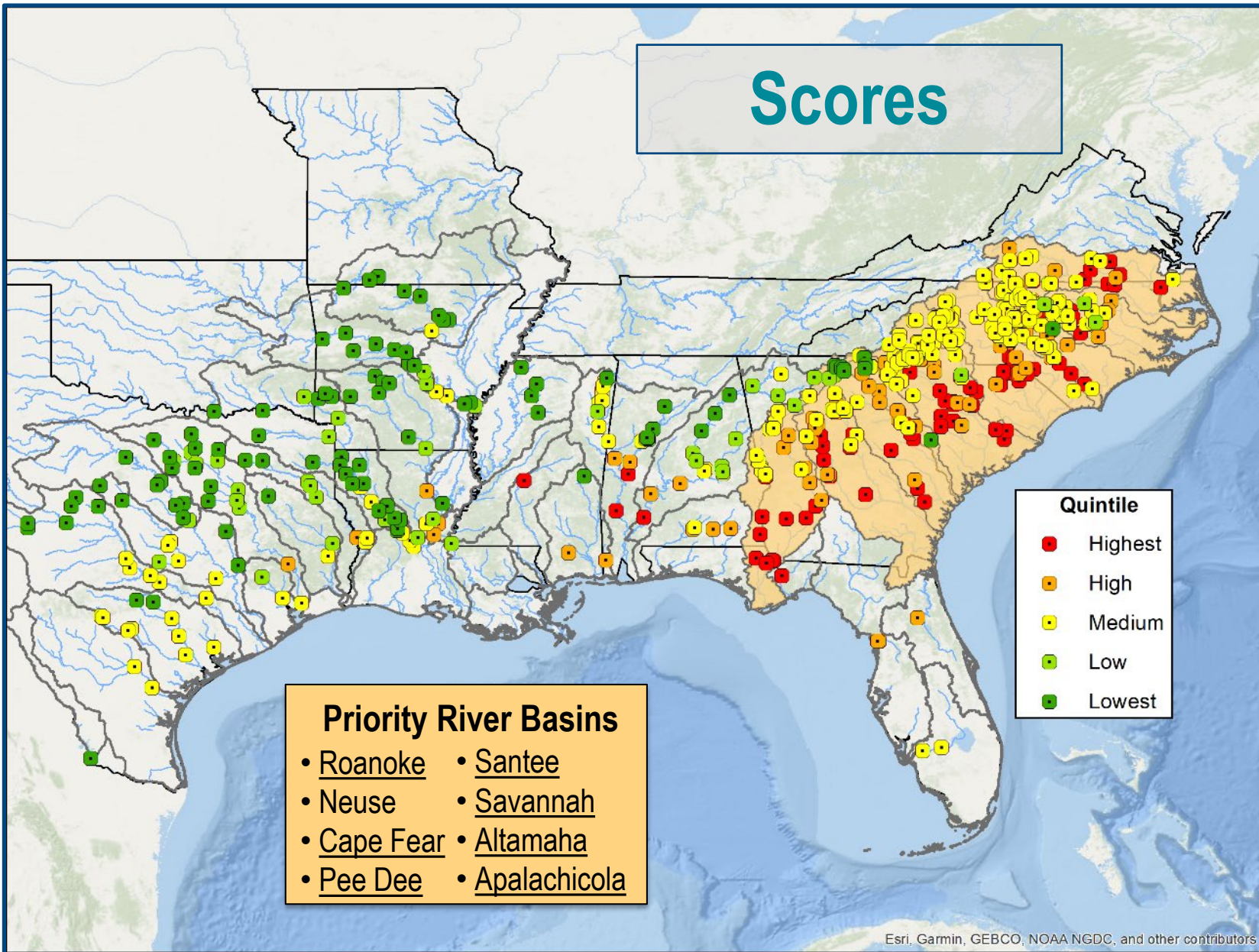


South Atlantic Watersheds

Scores by Variable



Scores

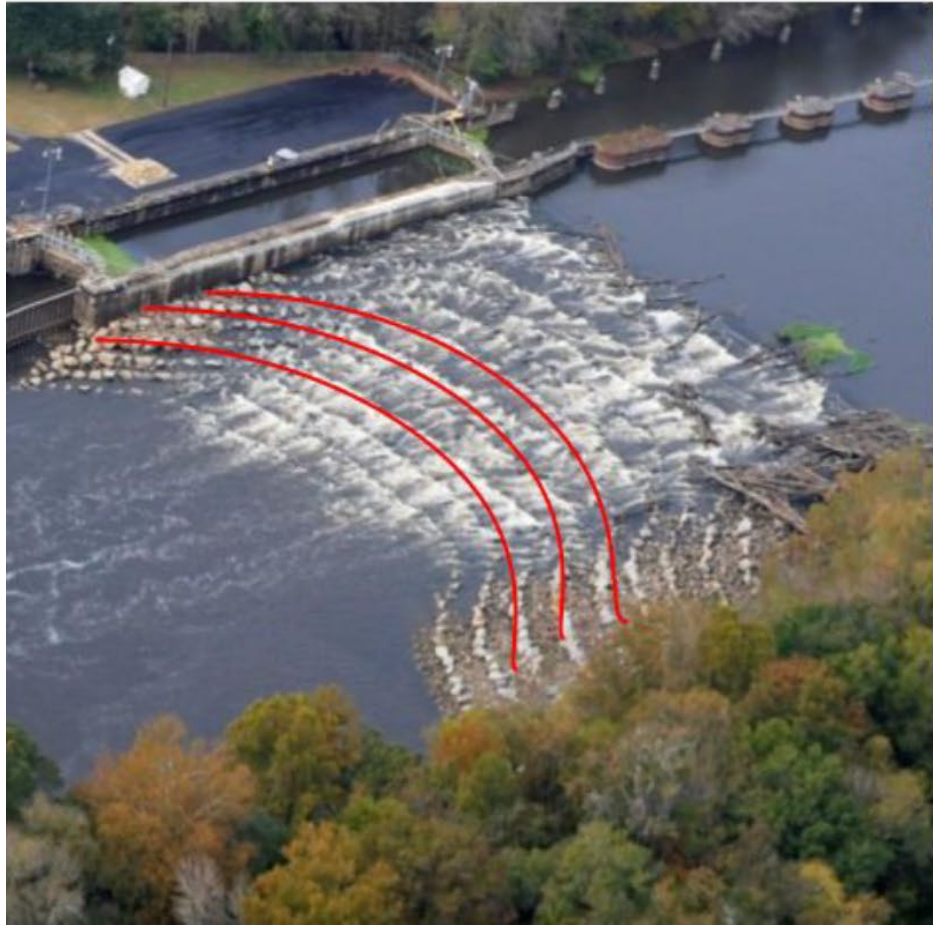


Tracking Success ...

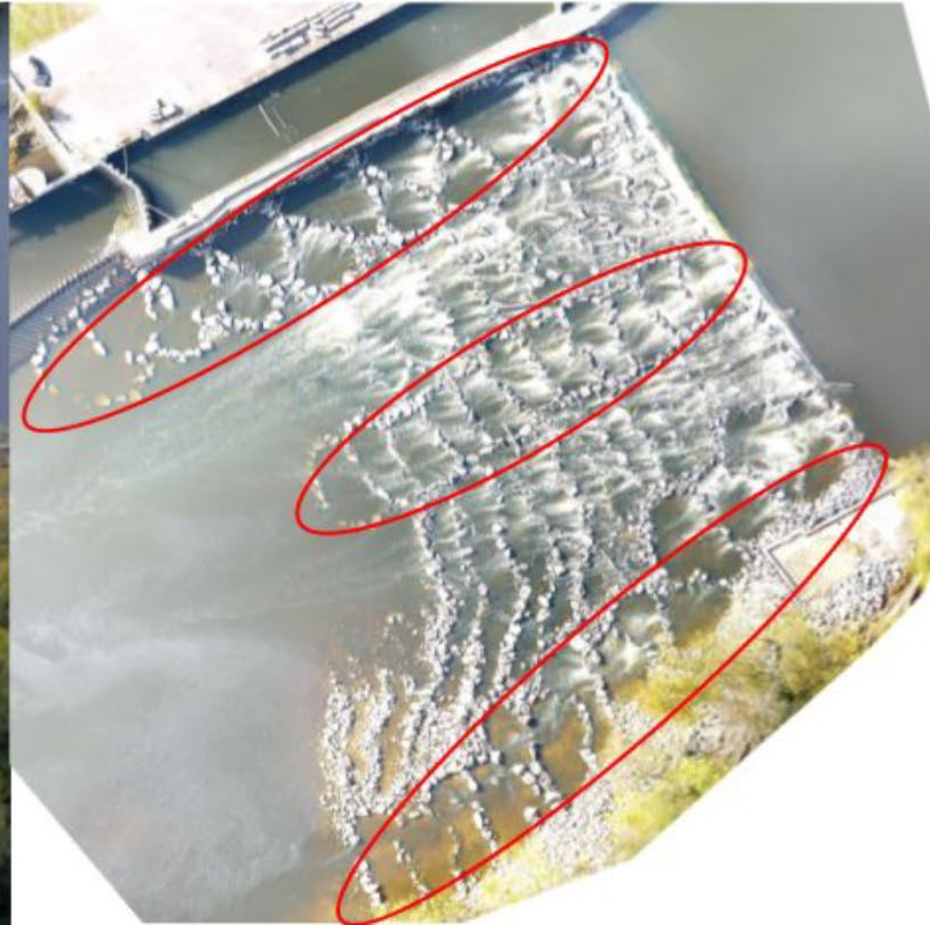
Priority River Basin	Basin Plan	Passage Prescribed	Passage In Place	Passage Optimized	Upstream
Roanoke (Roanoke Rapids Dam)	2016	2004	2009	Ongoing	Gaston, Kerr, Smith Mountain
Neuse (Milburnie Dam)	TBD	TBD	2018	TBD	Falls Lake
Cape Fear (Lock & Dam 1)	2013	2000*	2012	(2021)	LD2, LD3
Yadkin-Pee Dee (Blewett Falls)	2006	2008	2022	TBD	Tillery
Santee (Pinopolis/St Stephen/Wilson)	2001 2017	2007 2020	1950s/1985 TBD	TBD/Ongoing/ TBD	Columbia, Parr, Wateree
Savannah (NSBLD)	2005	2012*	TBD	TBD	Augusta, Stevens Creek
Altamaha (East Juliette Dam)	2013	2002	TBD	TBD	Lloyd Shoals
Apalachicola (JWLD)	2012	2012**	(2012)	TBD	Flint River, Lake Blackshear

Good News on Cape Fear Lock & Dam #1

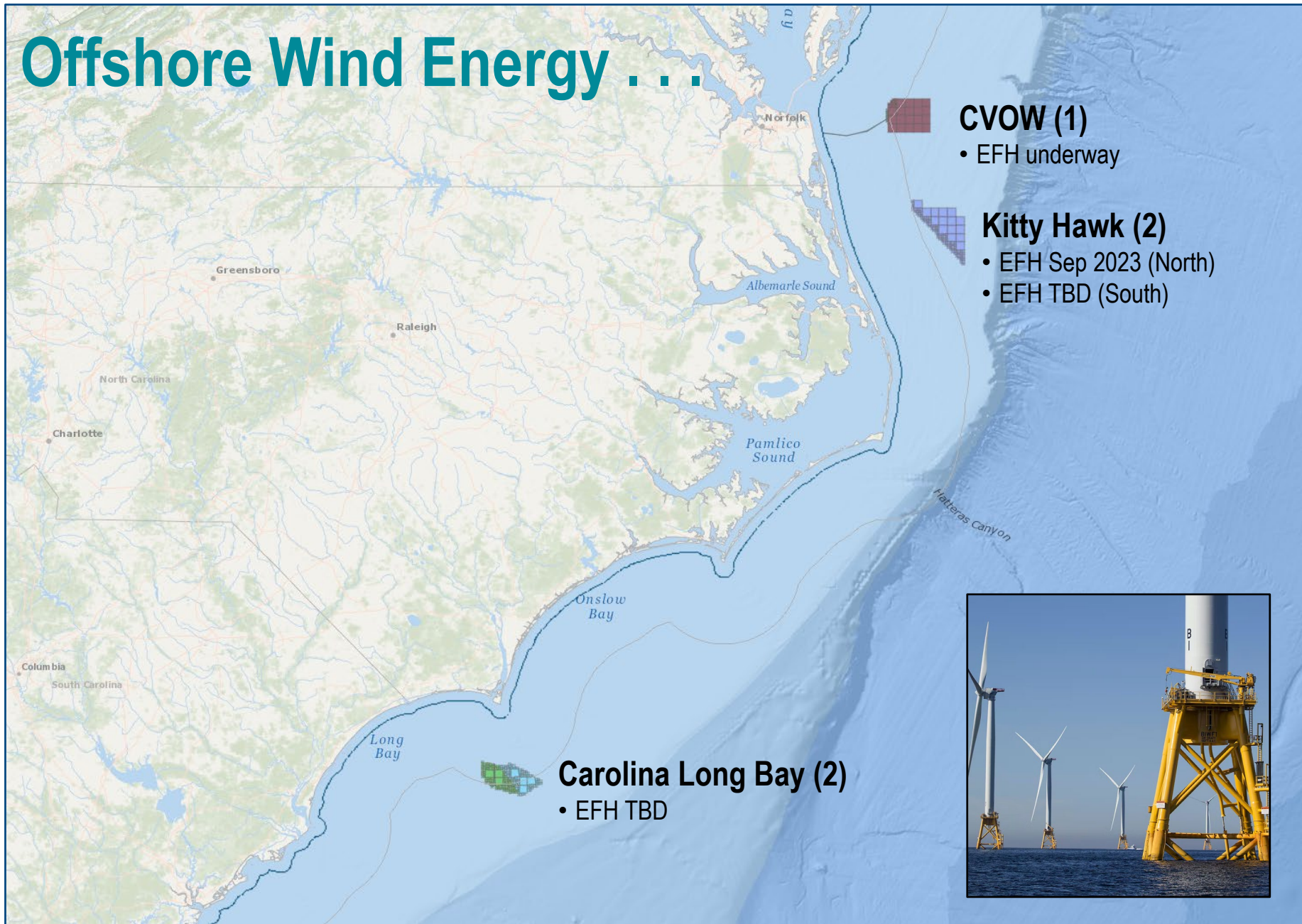
AERIAL VIEW OF THE NATURE-LIKE FISHWAY 2013



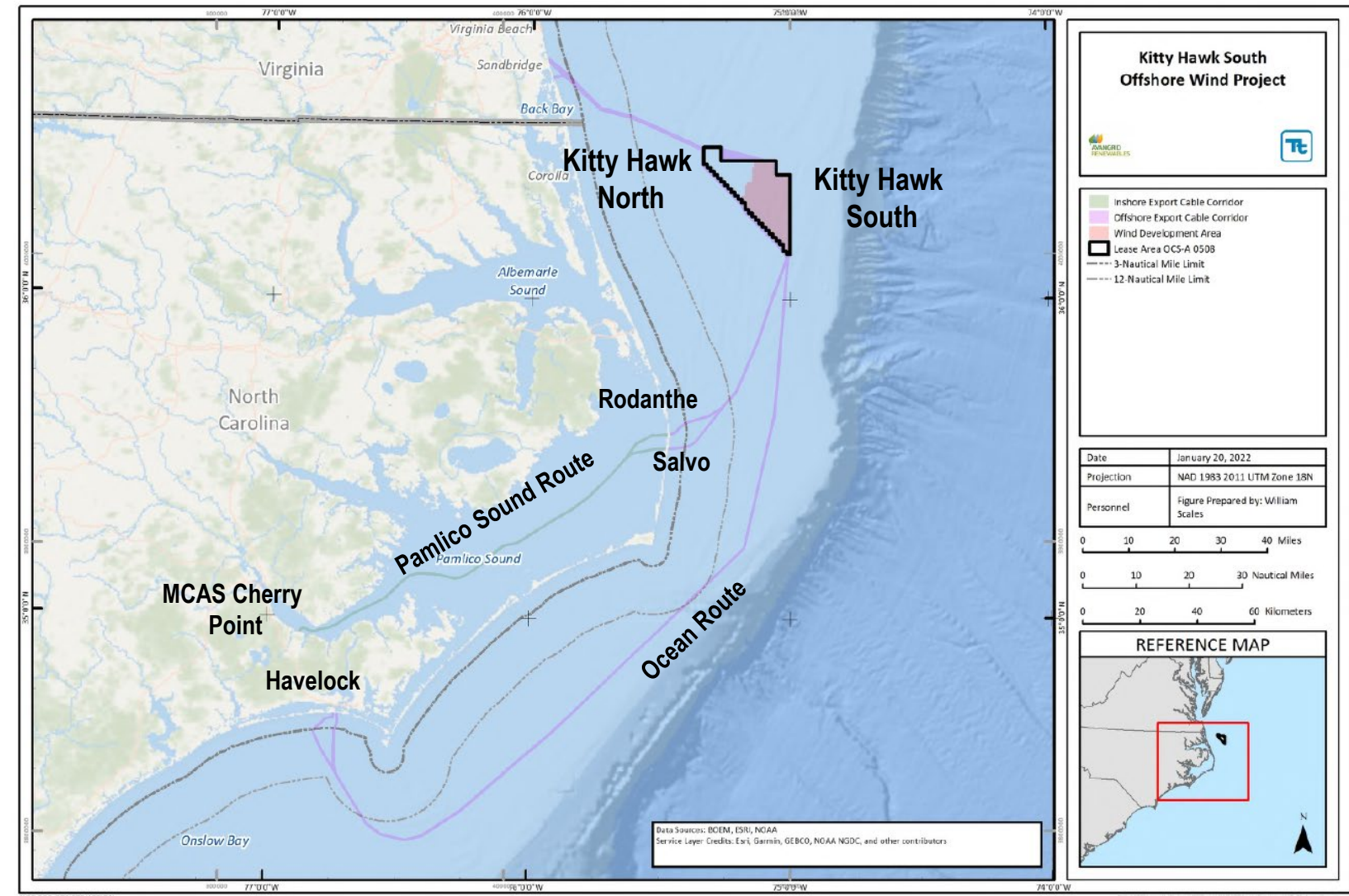
DRONE VIEW OF MODIFIED NATURE-LIKE FISHWAY 2021



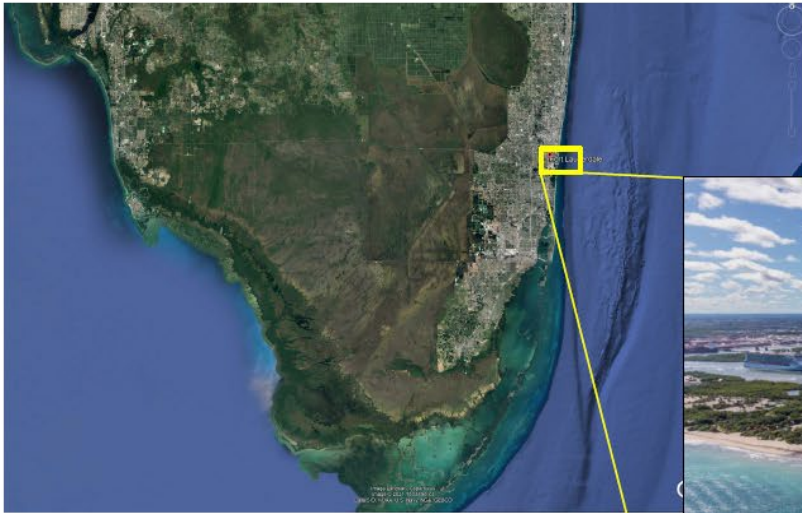
Offshore Wind Energy . . .



Kitty Hawk South Export Cable Potential Routes

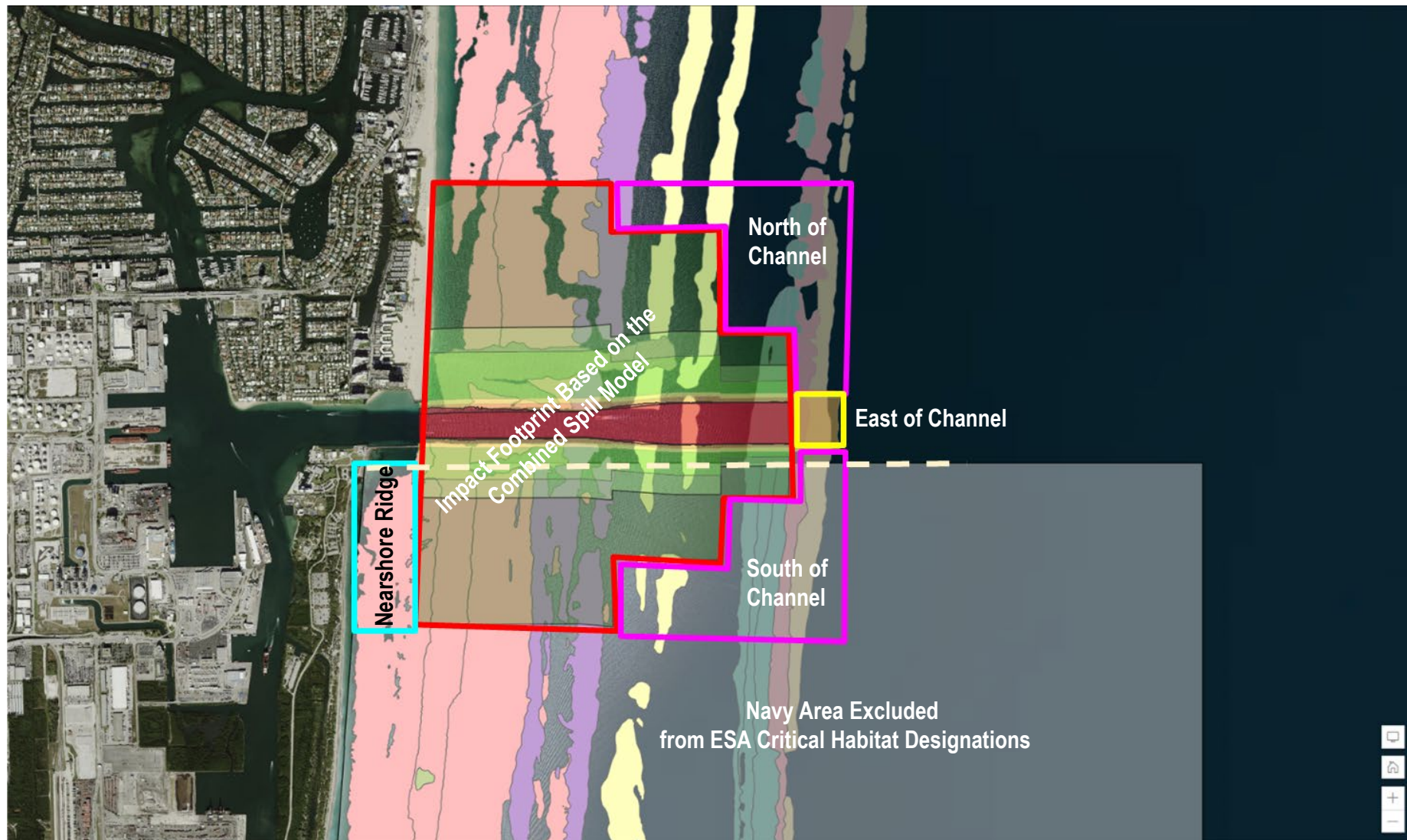


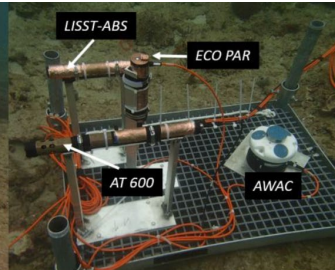
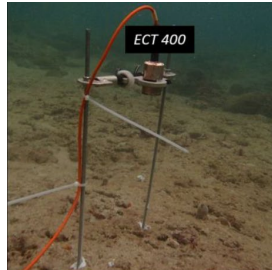
PORT EVERGLADES DEEPENING PROJECT



Source: porteverglades.net

Port Everglades Coral Impact Analysis

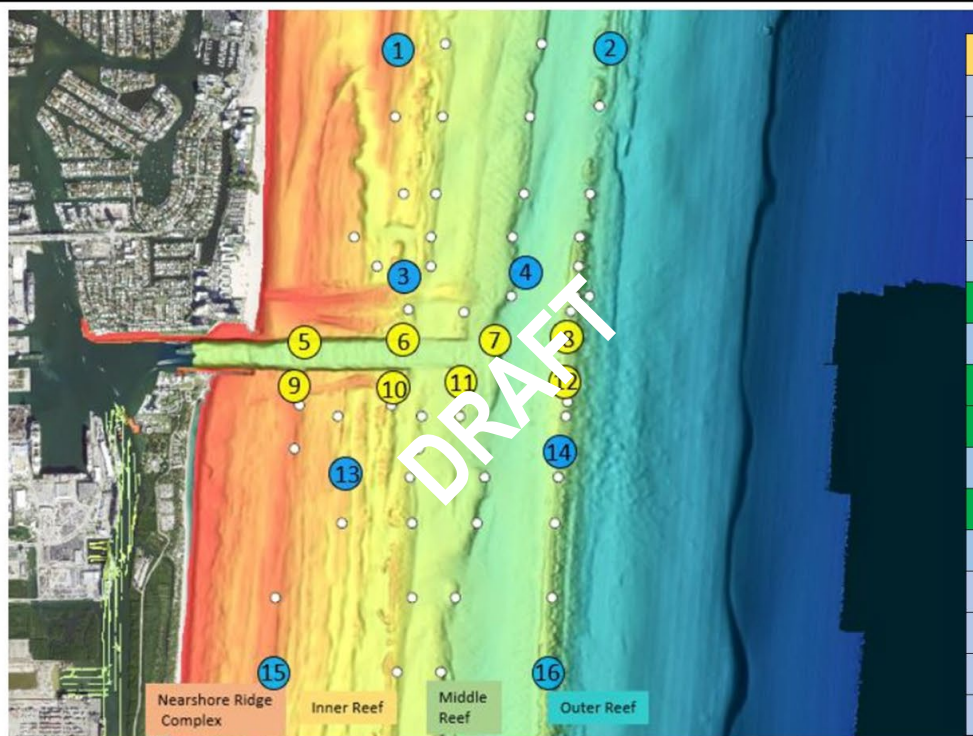




Near real-time water quality & oceanographic data



BUILDING STRONG



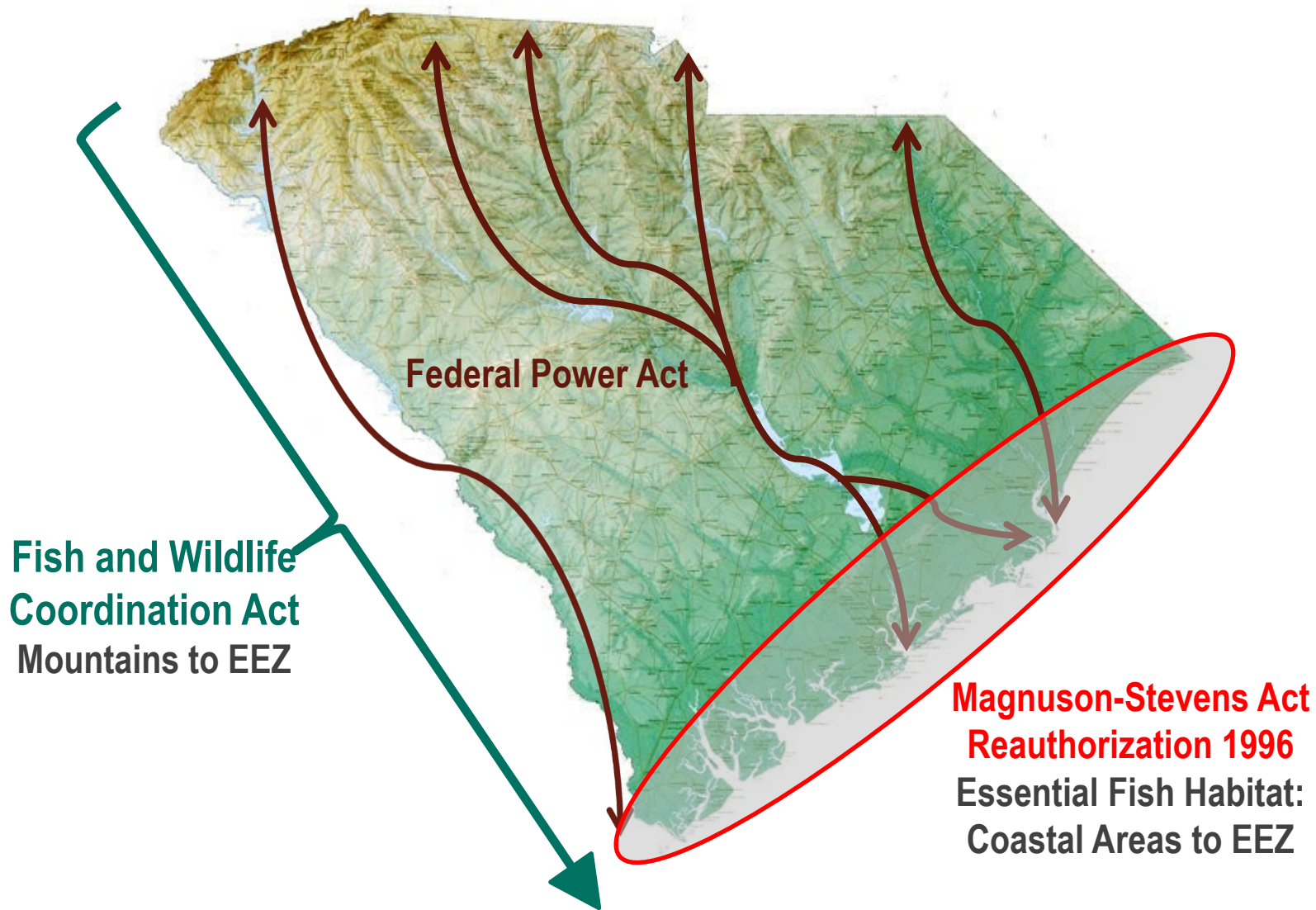
Station	Capabilities
1	TST
2	TST
3	TST
4	TST
5	TST
6	TST, SSC, L, SD, C, W
7	TST
8	TST, SSC, L, SD, C, W
9	TST, SSC, L, SD, C, W
10	TST
11	TST, SSC, L, SD, C, W
12	TST
13	TST
14	TST
15	TST
16	TST

SSC = Acoustic Backscatter Sediment Sensor-Suspended Sediment Concentration-LIST ABS

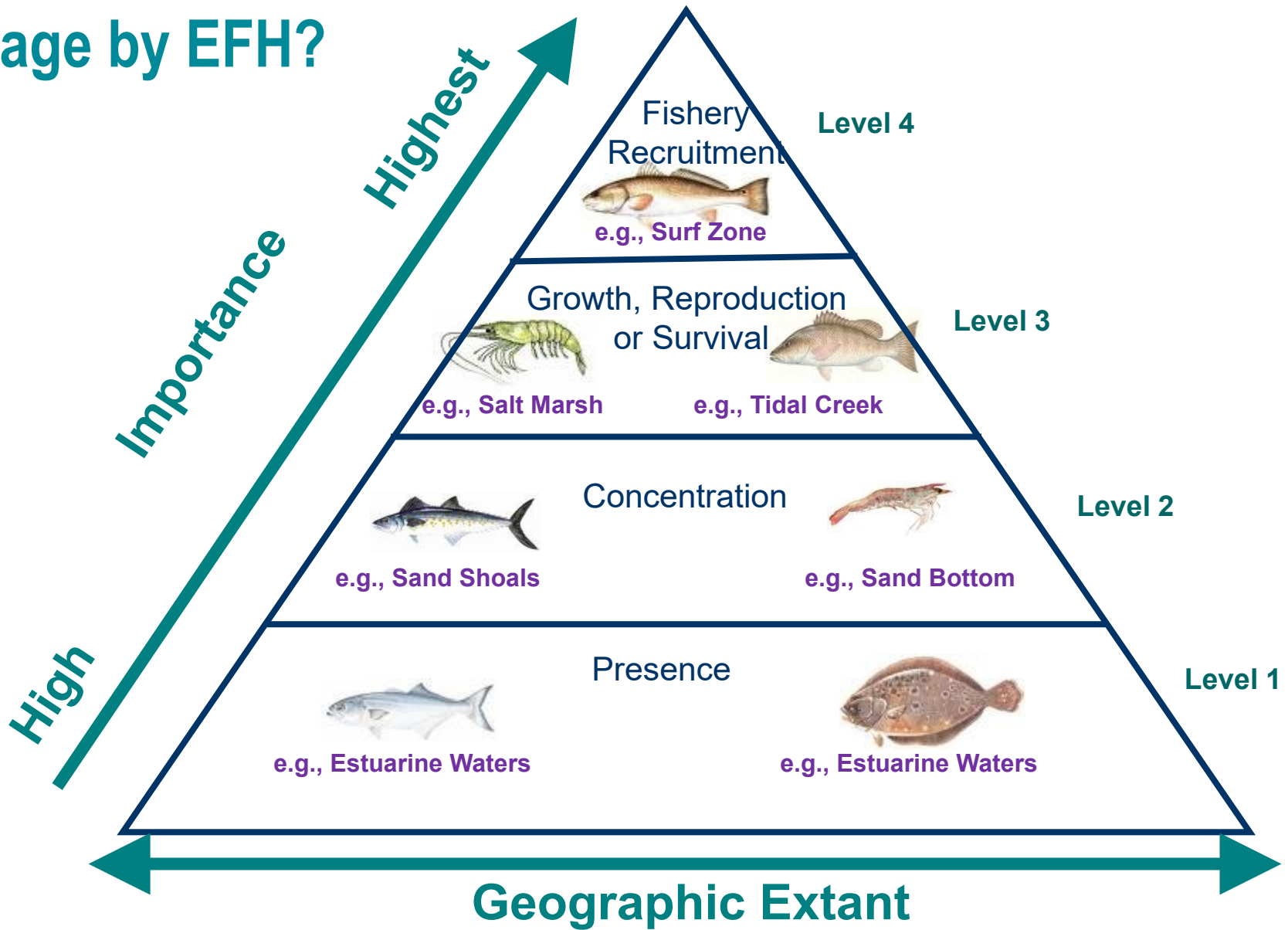
TST = Turbidity/Salinity/Temperature, L = Light (PAR), SD = Sediment deposition, C = Currents (ADCP or tilt meter), W = Waves

Data collection methods

EFH and FWCA Triage



Triage by EFH?



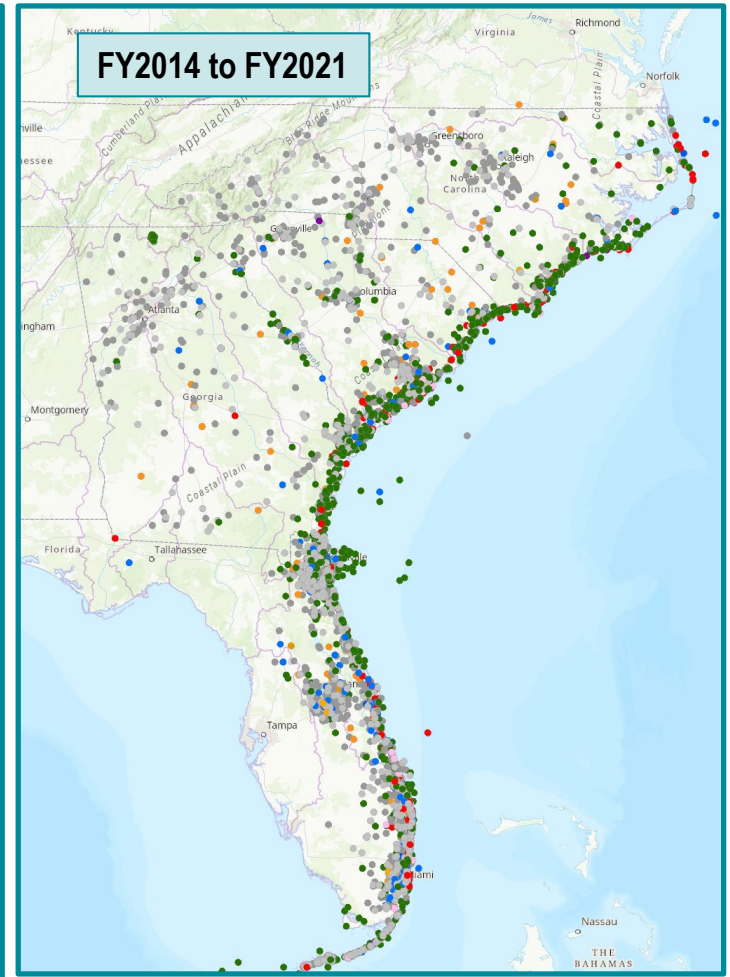
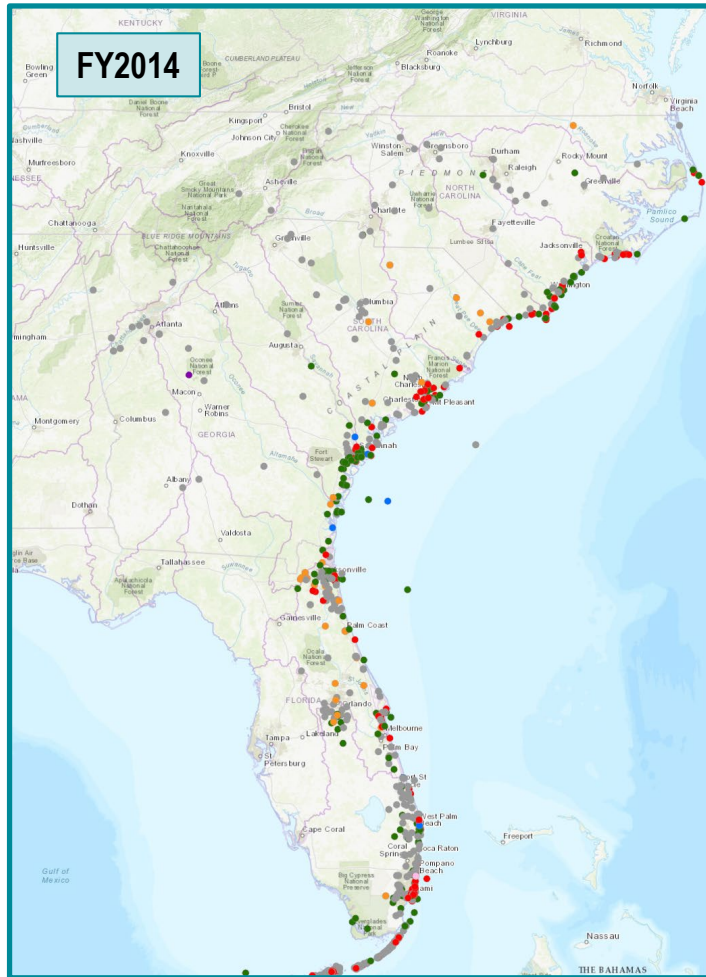
EFH and FWCA Consultations

Consultation Requests Received During 2014 and 2014 to 2021.

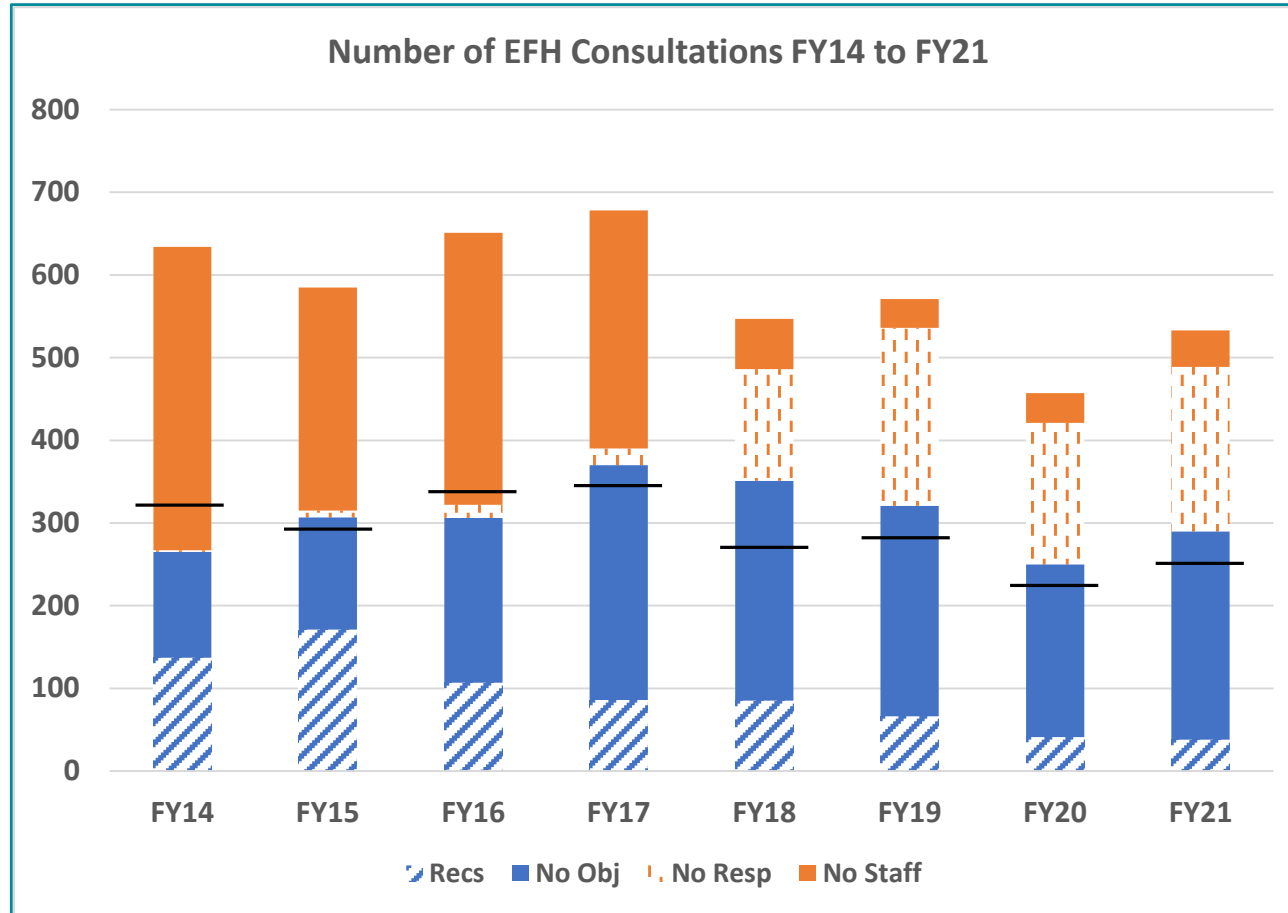
Depending on requesting agency, consultation requests are made via public notices (e.g., USACE) or letter (e.g., FHWA).

HCD Response

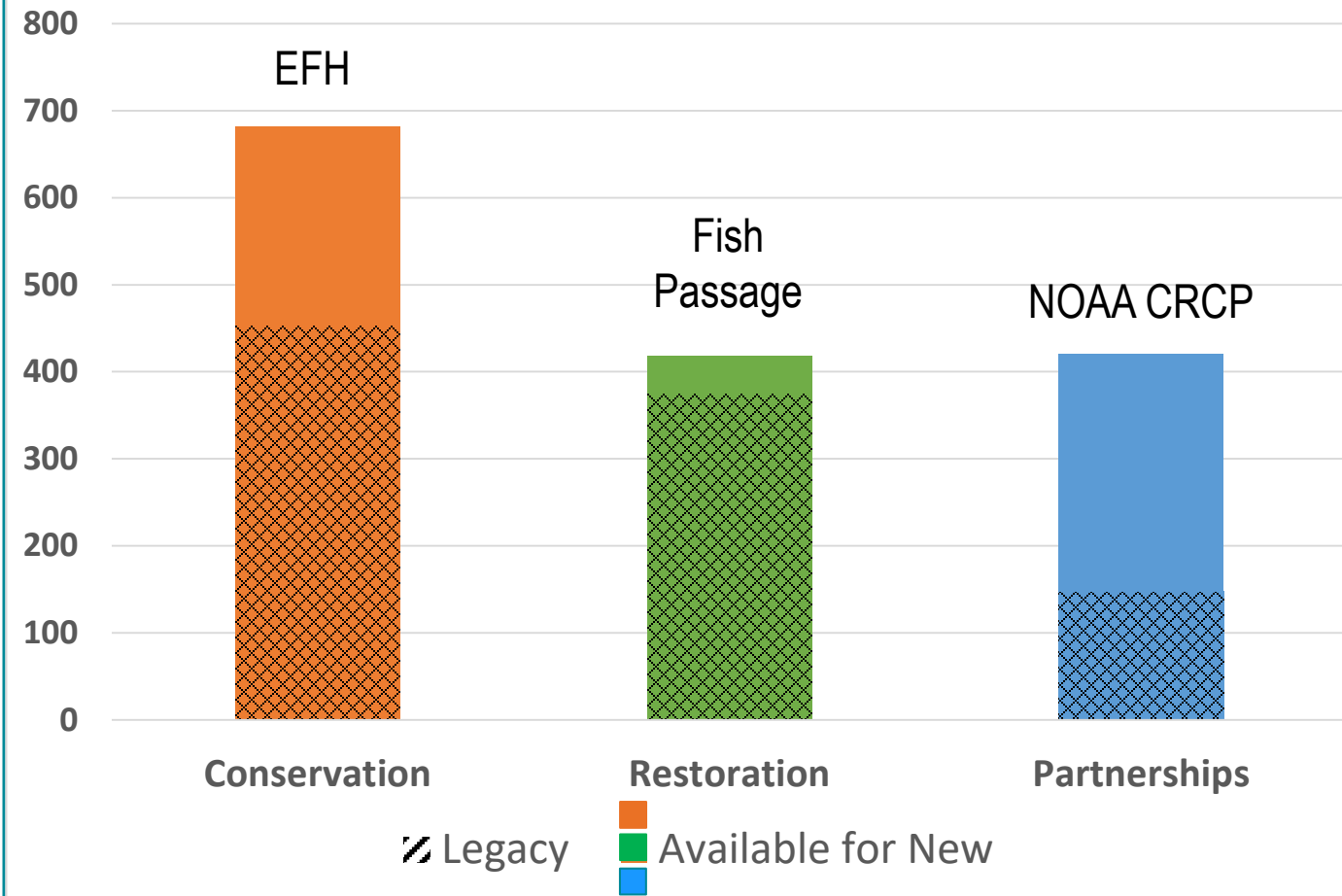
- EFH CRs
- FWCA Recs
- No Objection
- Tech Assistance
- 10-day Response
- Not Reviewed



EFH Consultations Conducted



Level of Effort Forecast for FY23 (labor days)



Habitat Reviews

- **Almost exclusively limited to projects affecting tidal waters**
- **Number of projects receiving detailed reviews declining**
 - **Especially in Florida**
 - **Trend expected to continue**
- **Large projects get the most attention**
 - **Beach nourishment**
 - **Ports**
 - **Infrastructure**





Triage by Acres?

