

# **Southeast Marine Mapping Tool:**

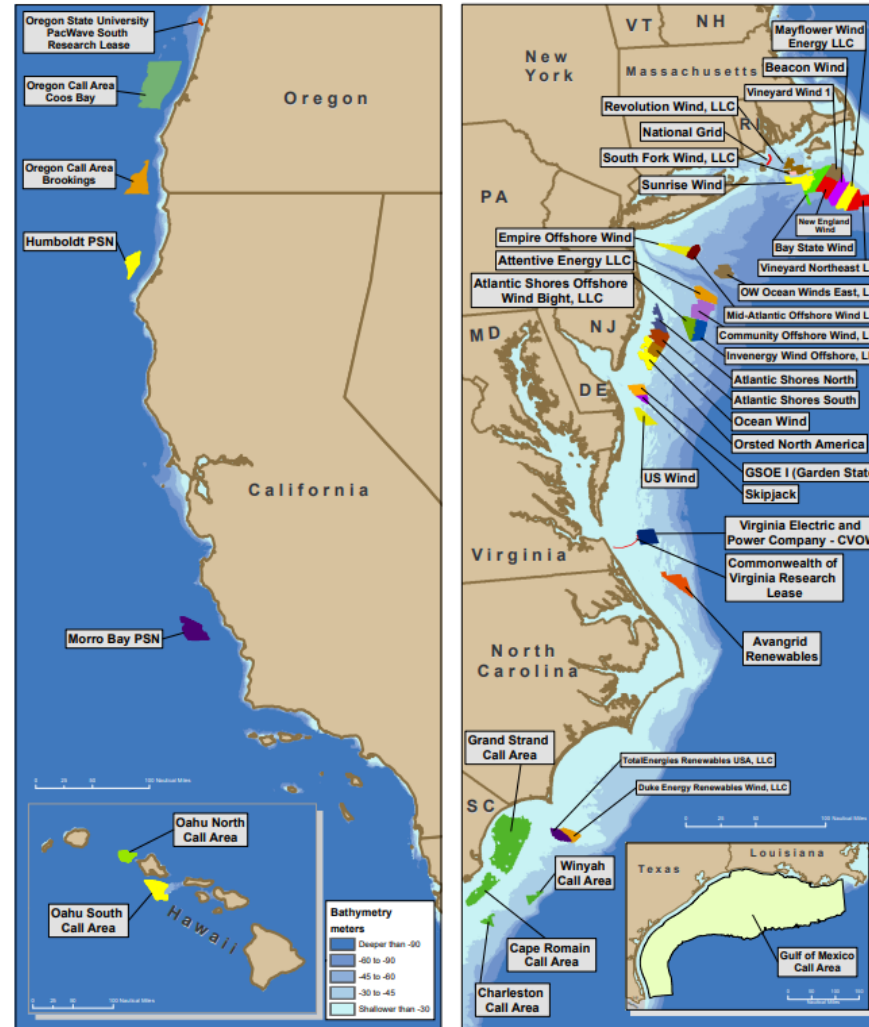
**Increasing access to regional ecological data to  
help inform offshore ocean use decisions**

**Mary Conley, Marta Ribera, Erik Martin, Mark Anderson**



# OFFSHORE DEVELOPMENT IN US

## THE CHALLENGE:



Source: BOEM

How do we make sure that **key habitats and species** are taken into consideration when making decisions, and that decisions are made using **best science and data** available?



# CHALLENGES IN THE SOUTHEAST

## Sediment Management

- Between 2008-2018, South Atlantic states completed 208 beach nourishment projects using over 105 million cubic yards of sand
- Meeting demand has required the identification of sand resources further from the coast

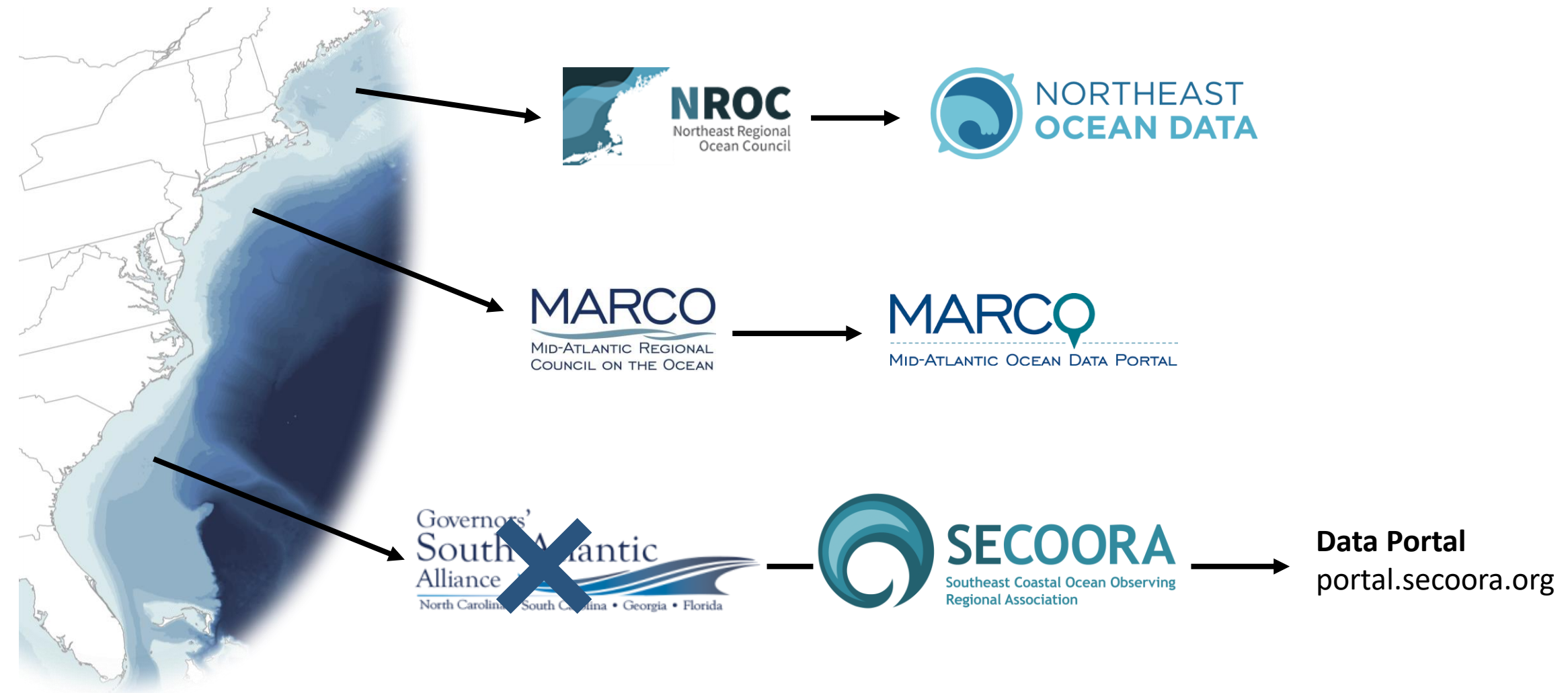


## Area-based Marine Management

- Live hardbottom habitats are hotspots for biodiversity and valued fishing locations
- Conservation tools to conserve these areas in marine protected areas alongside gear/use restrictions

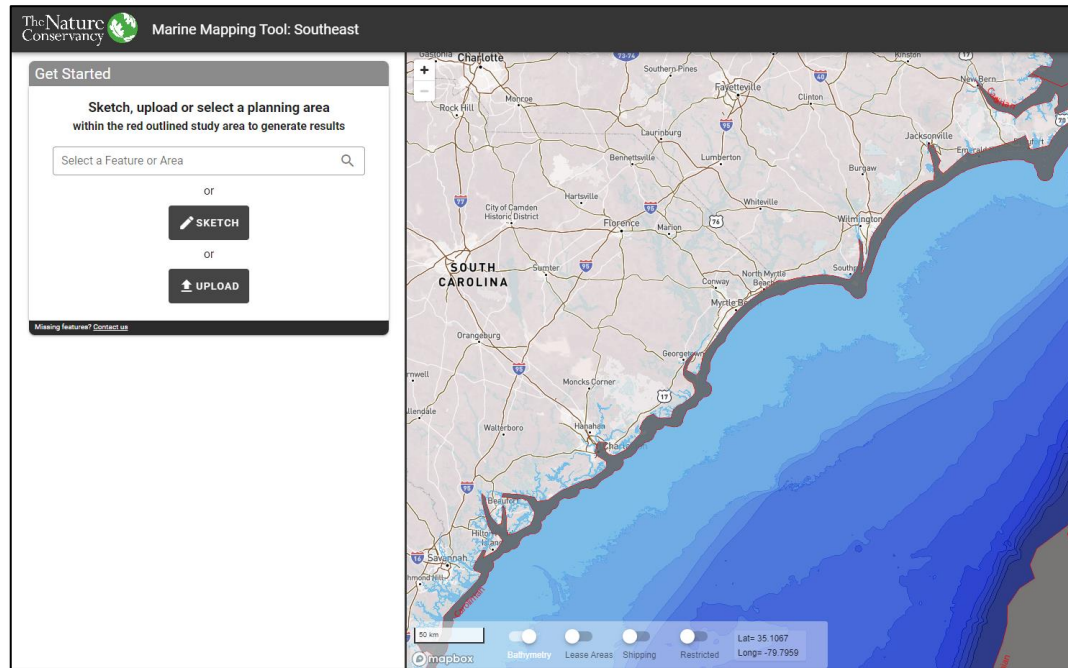


# CHALLENGES IN THE SOUTHEAST



# THE MARINE MAPPING TOOL

**OUR PROJECT:** Leverage marine-life, habitat, and use data available to provide guidance so all users can be part of decision-making process. Tool now available for NE and SE regions.



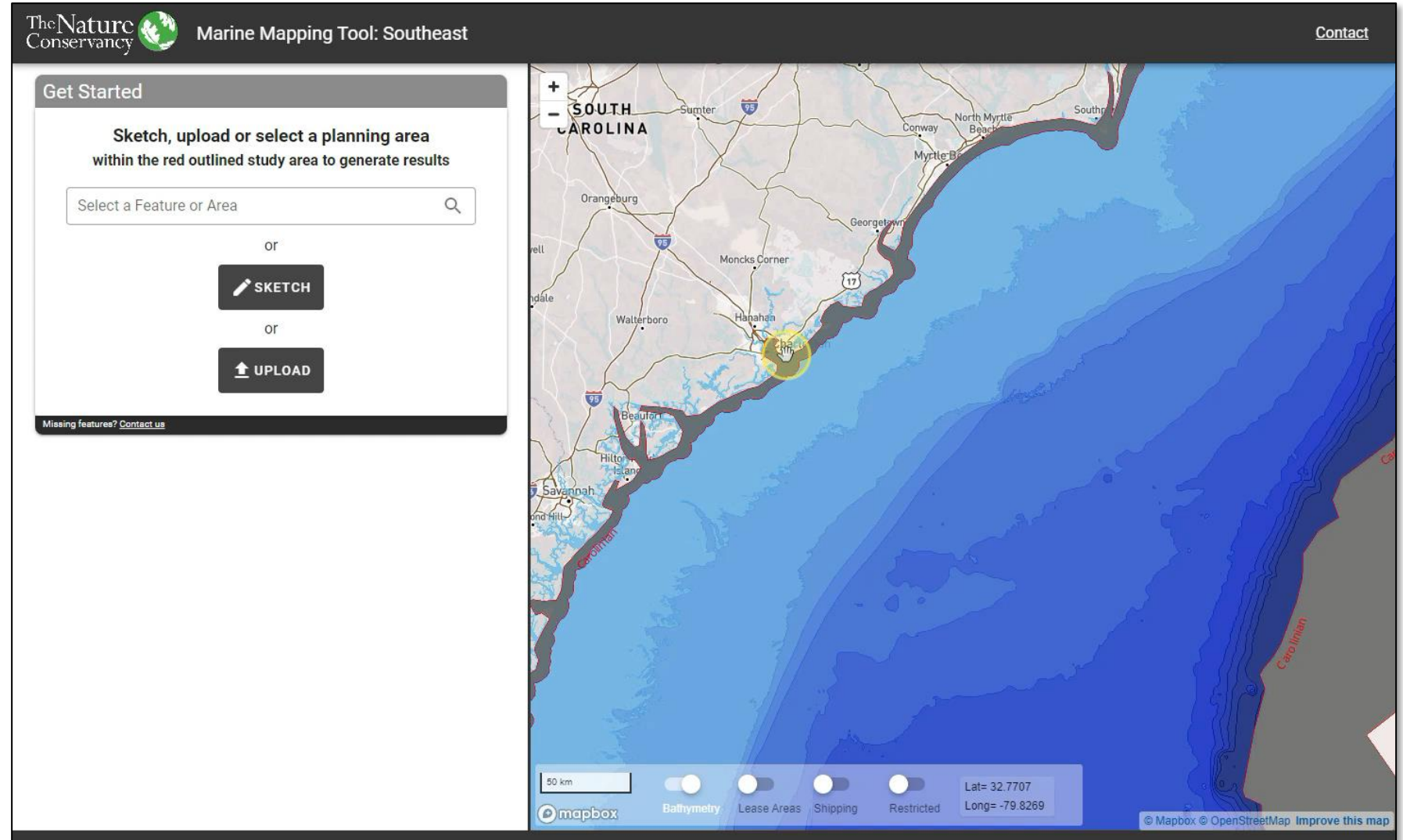
<https://maps.tnc.org/marinemap/>





# KEY FEATURES

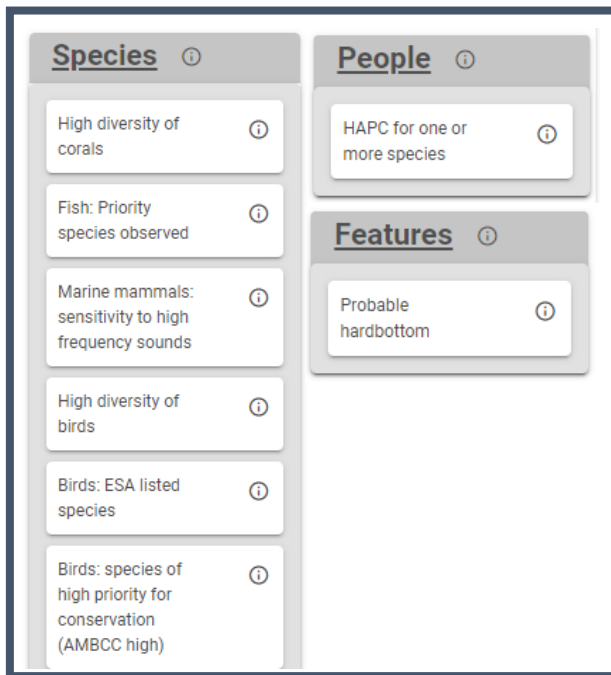
## 1 Quantitative summary of a specific area



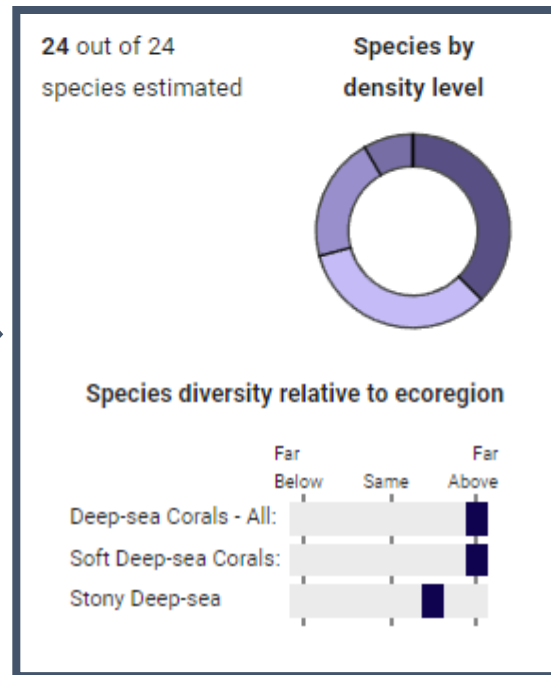
# KEY FEATURES

## 2 Unpacking the information, from broad to specific

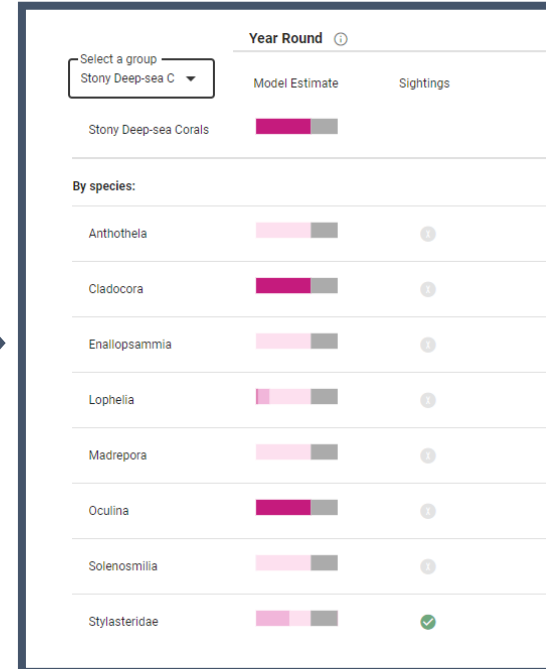
### OVERALL “FLAGS”



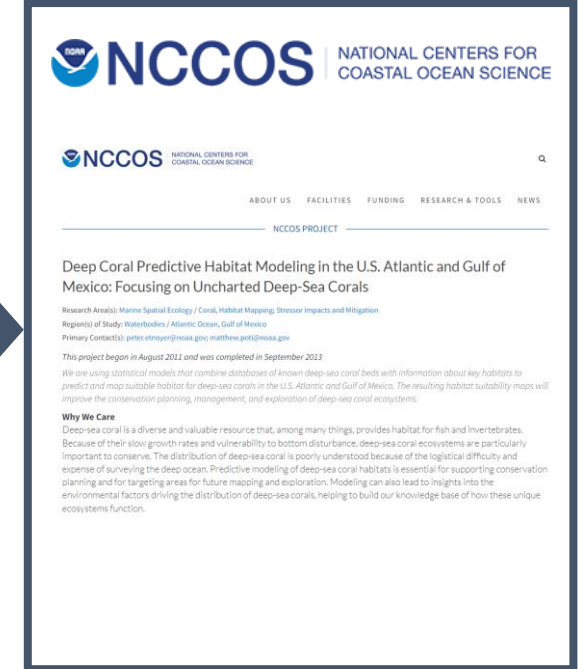
### ECOLOGICAL GROUPINGS



### SPECIES DATA



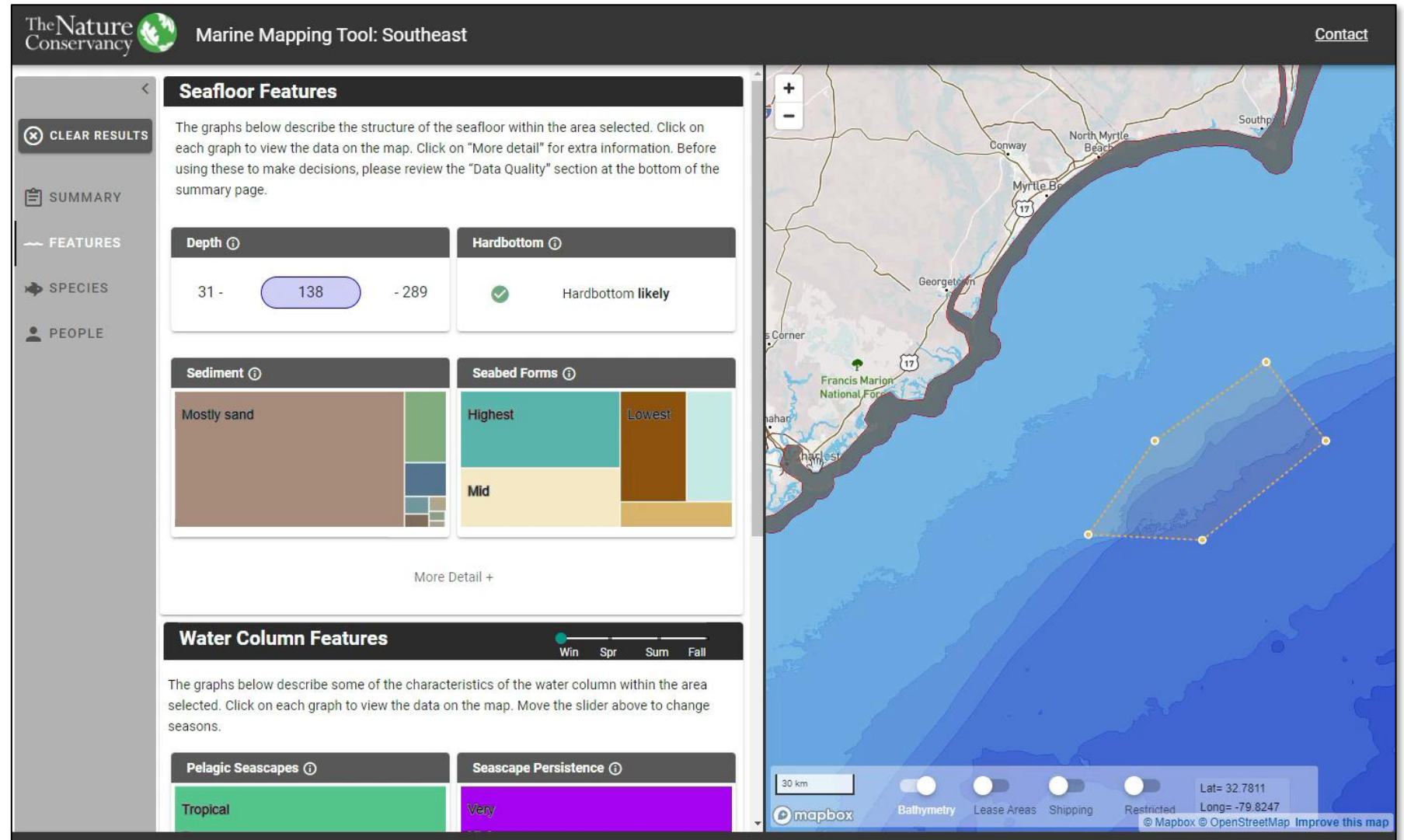
### DATA SOURCES



# KEY FEATURES

3

Interactive tool, using both maps and graphs



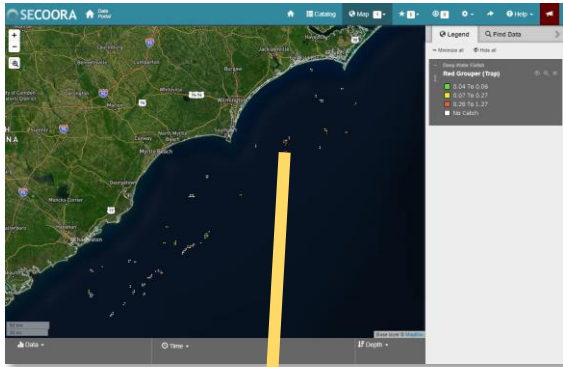


# KEY FEATURES

4

## Provides context to the numbers

Currently, we can say this about an area:



**“In this location and at this point in time, Red Grouper had a CPUE of 1”.**

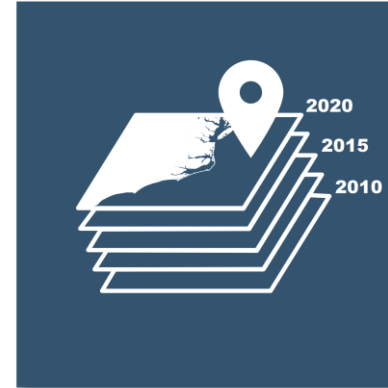
With the Marine Mapping tool, we can start answering the following questions:

### WITHIN A REGION



Does this location have a higher number of species than the whole region?

### ACROSS TIME



Is this location known to aggregate species persistently over time?

### APPLIED TO ACTIVITY

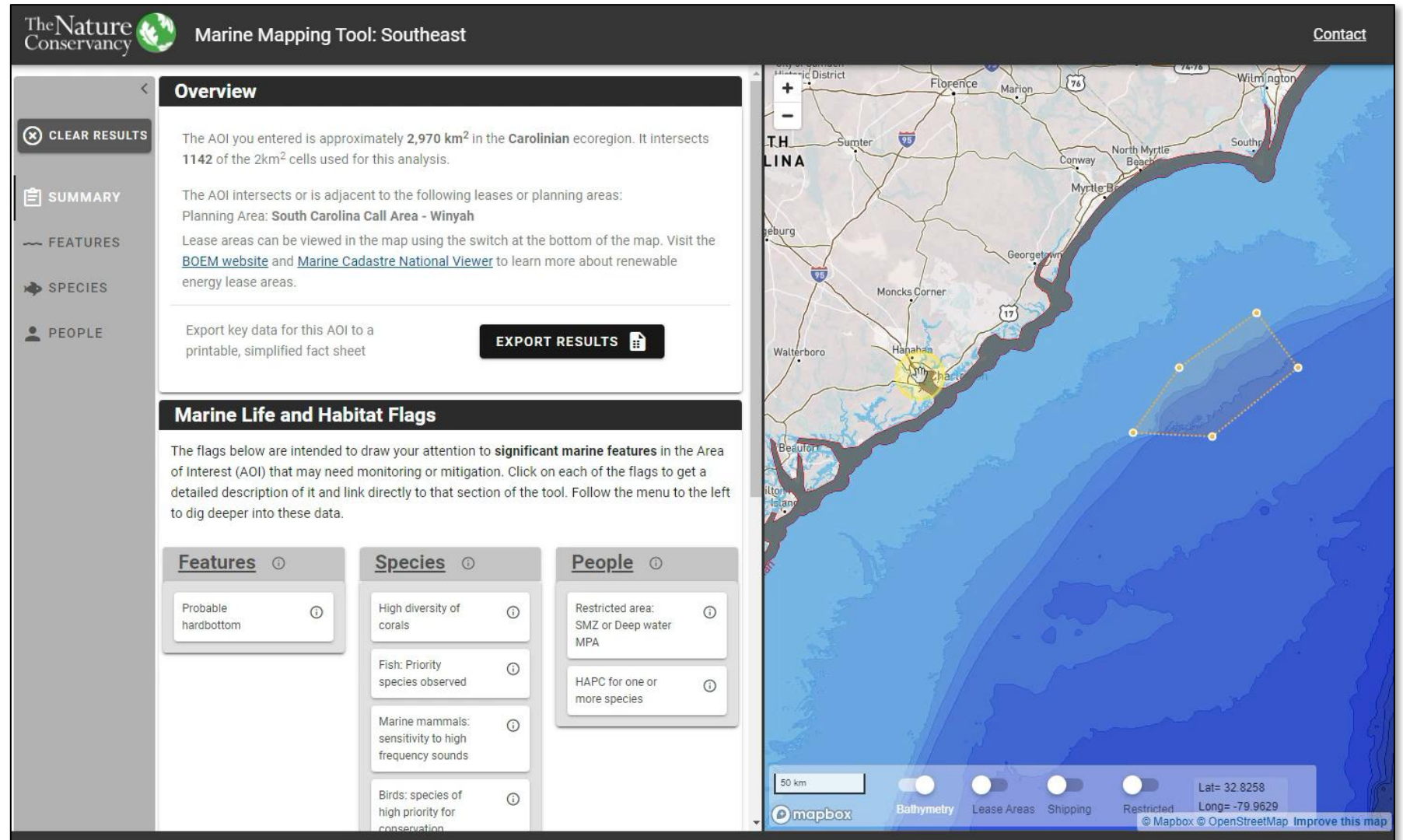


Are the species in this location likely to be impacted by wind development?

# KEY FEATURES

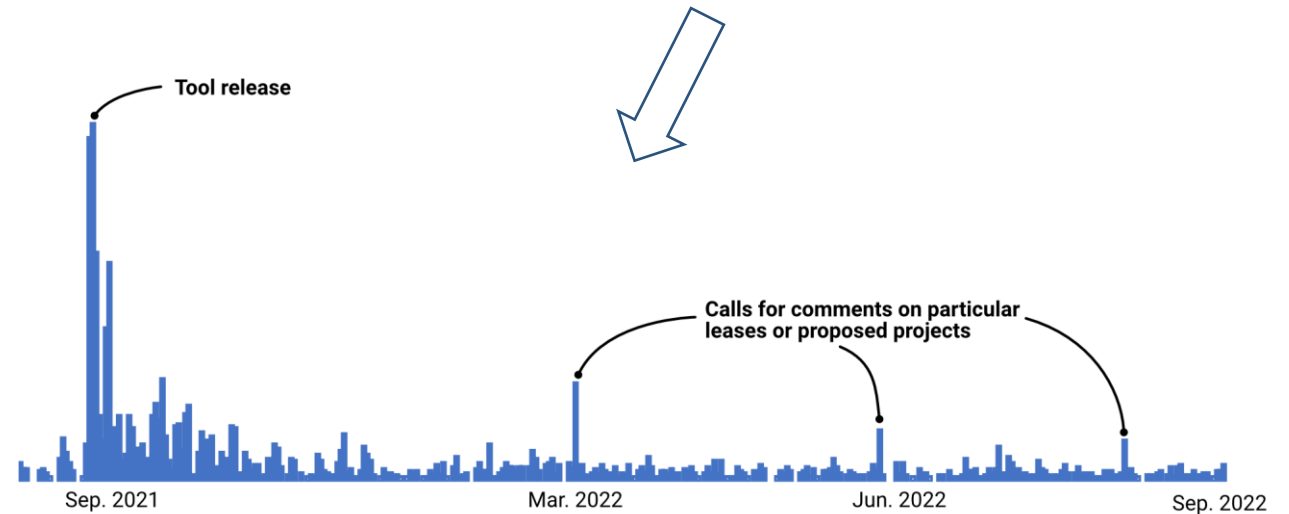
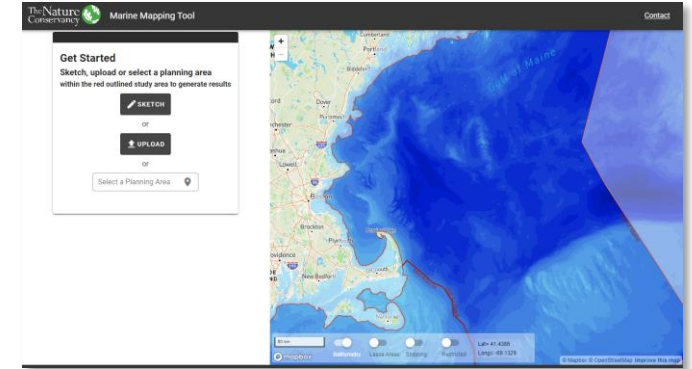
5

## Transparent link to data sources



# OUR USERS

- Steering committee and expert groups guide decisions on content and functionality
- So far, in the NE usage has focused on offshore wind demonstrated by traffic patterns
- SE Tool just released with phase two, focused on outreach and refinement of tool, starting soon





# THE SOUTHEAST MARINE MAPPING TOOL

