



# South Atlantic Salt Marsh Initiative



- Began in May 2021 as a collaborative effort between SERPPAS and The Pew Charitable Trusts
- Partners from local, state, and federal agencies; NGOs; academics; military; cultural and community leaders
- Voluntary, non-regulatory partnership
- Regional – North Carolina through east-central Florida

Source: NOAA C-CAP, USGS PAD 3.0



*Goal: To enhance the long-term abundance, health and resilience of the approximately 1 million acres of salt marshes within the South Atlantic states to ensure no overall loss of the benefits these wetlands provide to fish, wildlife and people.*

# Why Salt Marsh?

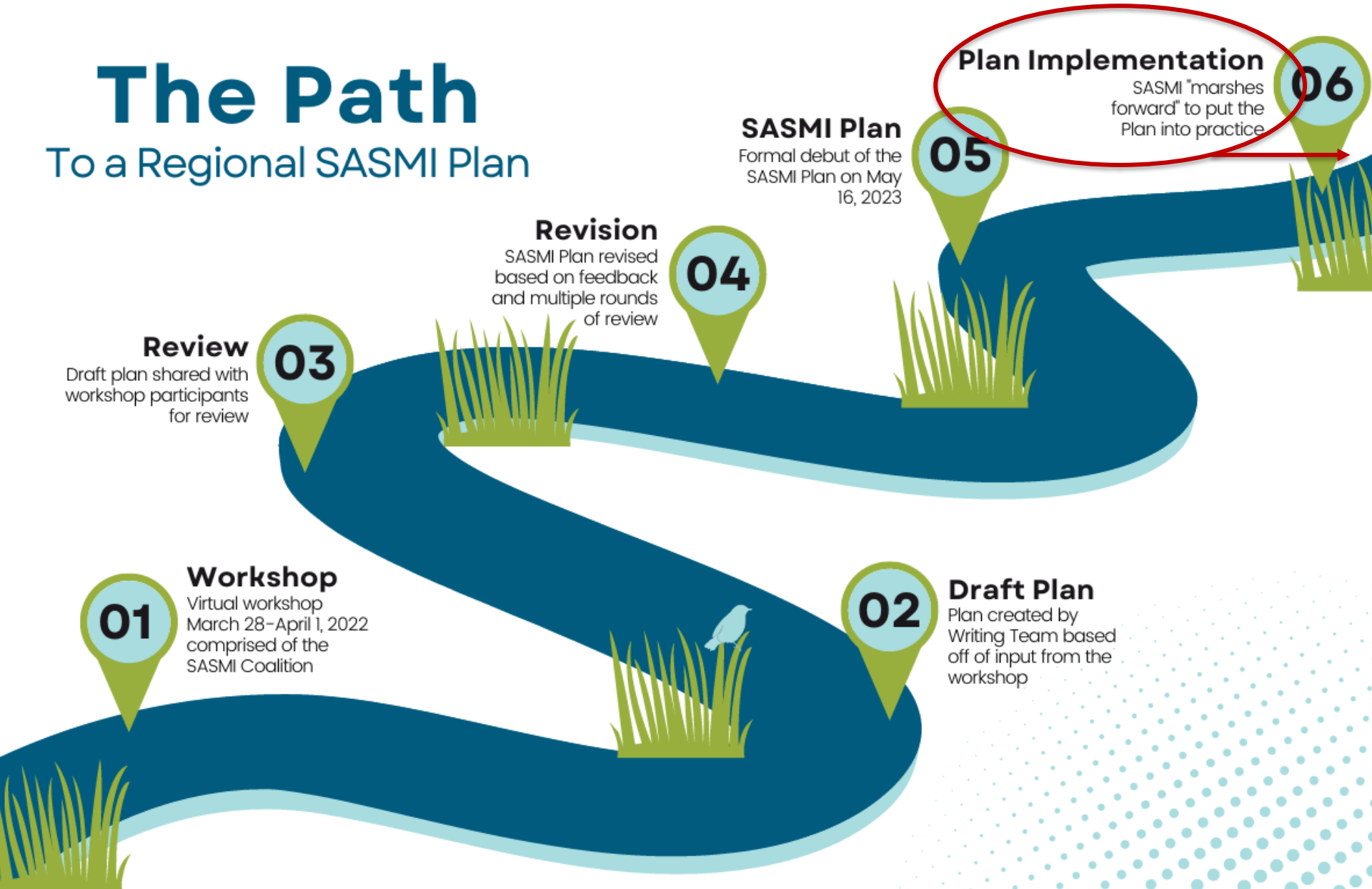
*Between land and sea lie the ecological guardians of the coast – salt marshes.*

- 
- Protect coastlines from flooding, erosion and storm surges
  - Filter runoff and support water quality
  - House sites of cultural and spiritual significance
  - Provide habitat for a variety of ecologically, recreationally, and commercially important species
  - Sequester carbon and mitigate climate change



# The Path

## To a Regional SASMI Plan



# SASMI Plan

1. Protect and restore the health and functions of existing salt marshes.



## MARSH FORWARD

**A REGIONAL PLAN FOR THE FUTURE  
OF THE SOUTH ATLANTIC COAST'S  
MILLION-ACRE SALT MARSH ECOSYSTEM**





# Protect and Restore





# SASMI Plan

2. Conserve marsh migration corridors and remove or retrofit barriers to ensure salt marshes can shift as sea levels rise.



## MARSH FORWARD

**A REGIONAL PLAN FOR THE FUTURE  
OF THE SOUTH ATLANTIC COAST'S  
MILLION-ACRE SALT MARSH ECOSYSTEM**

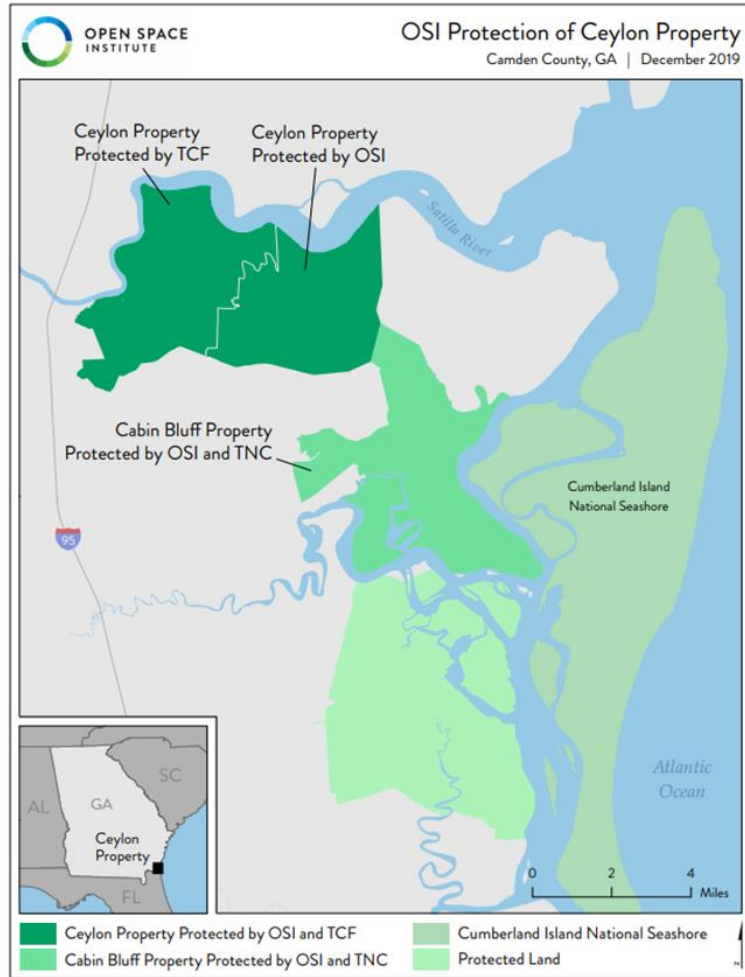
A COLLABORATIVE  
EFFORT OF THE



**SOUTH  
ATLANTIC  
SALT  
MARSH  
INITIATIVE**



# Conserve Marsh Migration Corridors and Remove or Retrofit Barriers



# Marshing Forward into Implementation

- 
- Moving SASMI from planning to implementation
  - Regional and collaborative approaches to funding
  - Addressing capacity challenges
  - Increasing stakeholder engagement



# Funding Pursuits

- **NFWF National Coastal Resilience Fund for Community Planning and Capacity Building**
- **NOAA Climate Resilience Regional Challenge**
  - Track 2 Letter of Intent submitted
  - Regional effort with 17 partners
- **(Tentative) NOAA Transformational Habitat Restoration and Coastal Resilience**

Mac Stone





# Marsh Forward!

For more info: [marshforward.org](http://marshforward.org)

Amanda Gobeli, SASMI coordinator: [amanda.gobeli@ag.tamu.edu](mailto:amanda.gobeli@ag.tamu.edu)