

A complex network diagram with various sized nodes (black, blue, and grey) connected by thin grey lines. Some nodes are highlighted with larger circles. The background is light grey with faint circular patterns.

# SEAMAP-SA DATA MANAGEMENT

Current and Future Online Data Systems  
Tracey Smart  
South Carolina Dept. of Natural Resources  
[smartt@dnr.sc.gov](mailto:smartt@dnr.sc.gov)

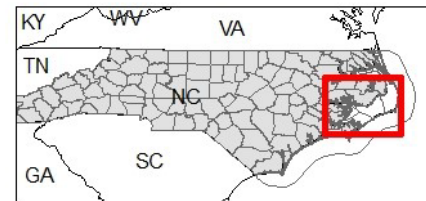
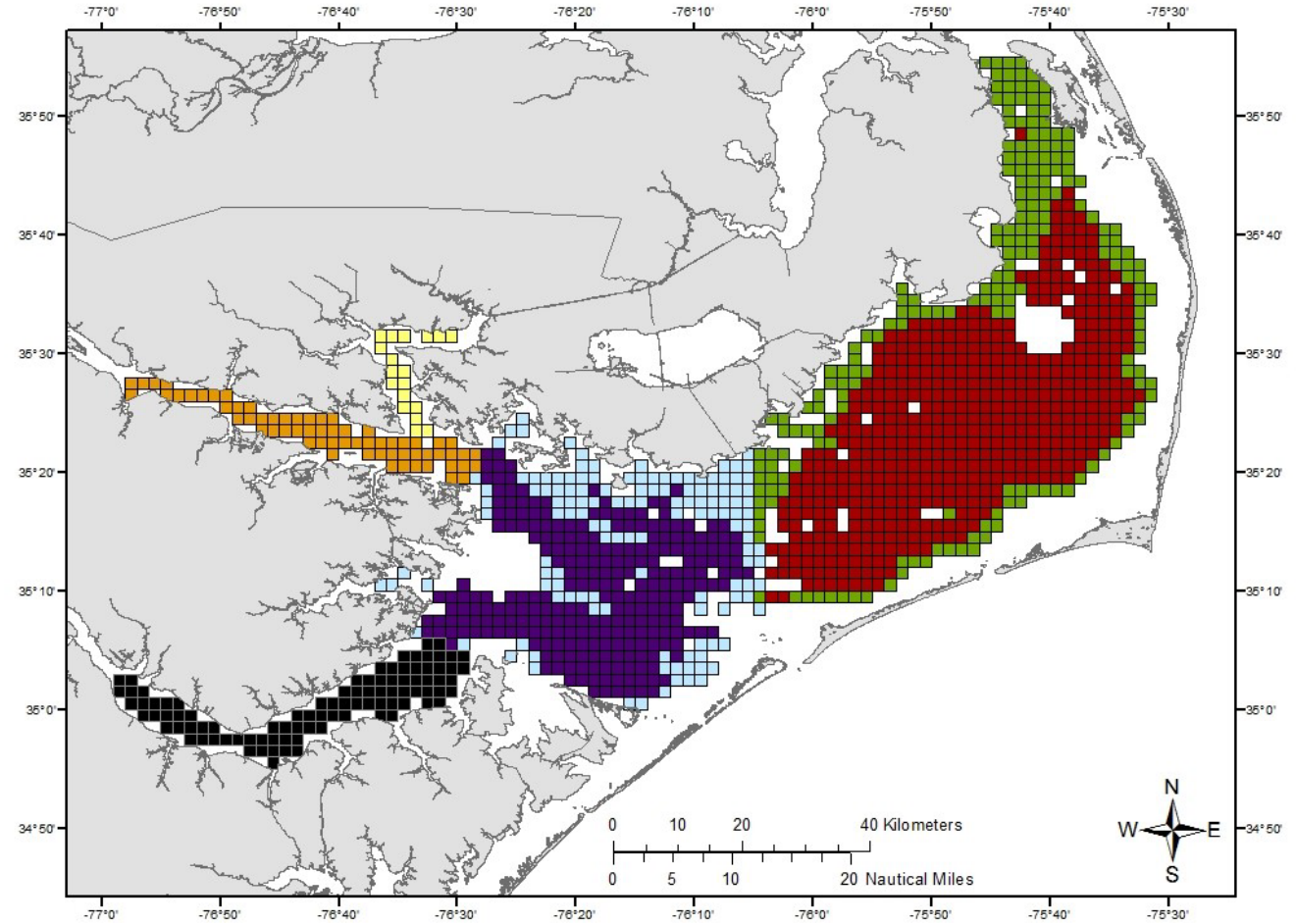
# SURVEYS INCLUDED

Coastal Trawl Survey (SCDNR)

Coastal Longline Survey (GADNR, SCDNR, NCDMF)

Pamlico Sound Survey (NCDMF)

Southeast Reef Fish Survey (SCDNR & SEFSC)



## Pamlico Sound Survey Strata



# TARGETED DATA PRODUCTS

Abundance & Biomass by Species

Multispecies Downloads

Length Frequency

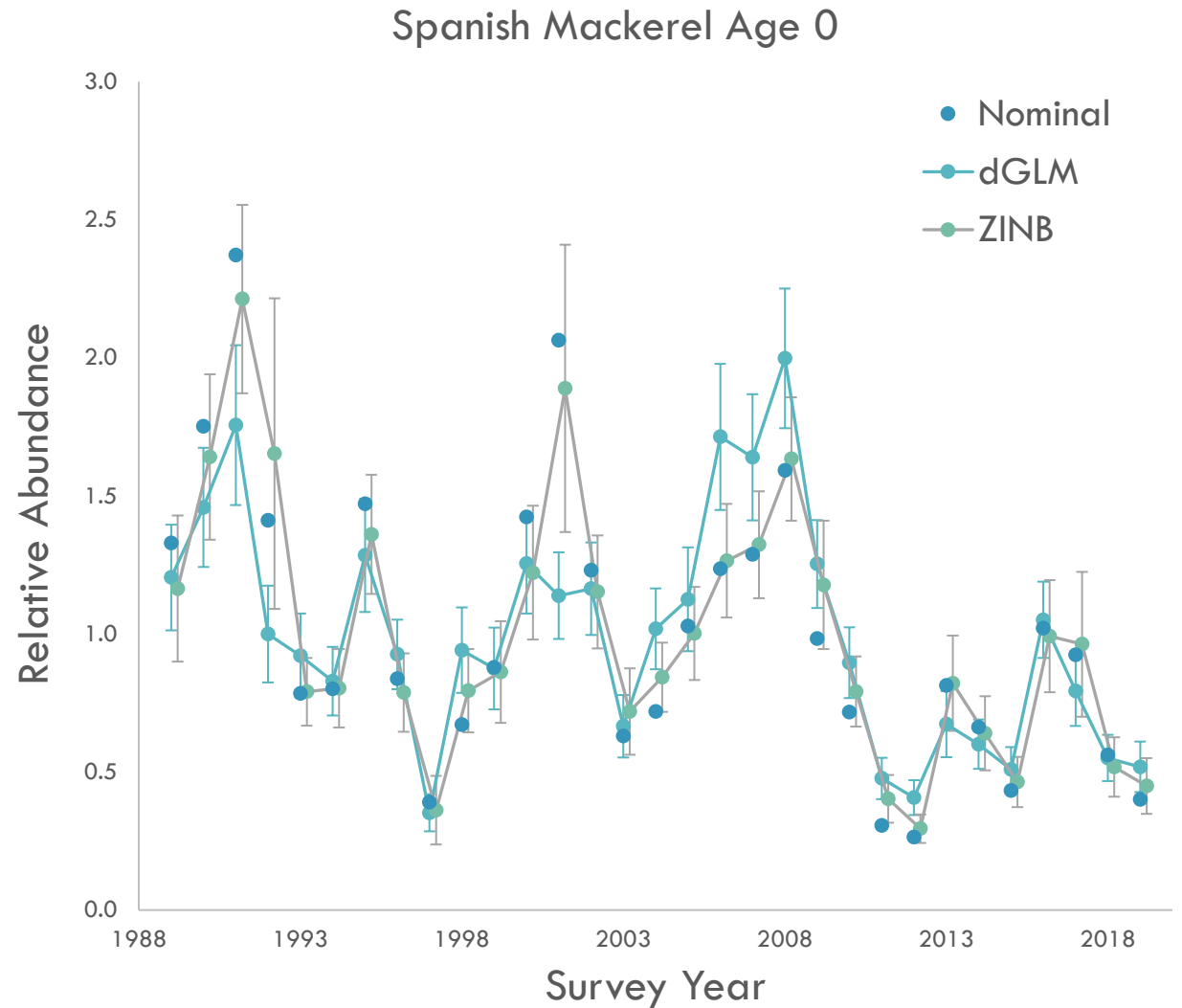
Life History (age, repro, etc.)

New Data System:

Tagging

Sea Turtles

Diet



# SEAMAP-SA ONLINE DATABASE

Iteration 1 (Active)

Developed and maintained by SCDNR IT

All funded SEAMAP-SA Surveys

One shared structure

Administrator Interface for data & code  
table importation & deletion

User-driven queries by Survey and Data  
Type

Metadata on SEAMAP.org

User tracking

**Type of Data:**  
Choose Data to Download [Data Types](#)  
Choose Data to Download  
Event Information  
Abundance and Biomass  
Length Frequency  
Individual Specimen  
Tagging Information  
no selected option 32 available options  
1989  
1990  
1991

**States:**  
no selected option 4 available options  
FL  
GA  
NC

**Latitude Range:**  
no selected option 428 available options  
28.75  
28.76  
28.77

**Seasons:**  
no selected option 3 available options

# SEAMAP-SA ONLINE DATABASE

Iteration 2 (Under Development)

Developed and maintained by Axiom DS

Hosted within SECOORA Data Portal

All funded SEAMAP-SA Surveys

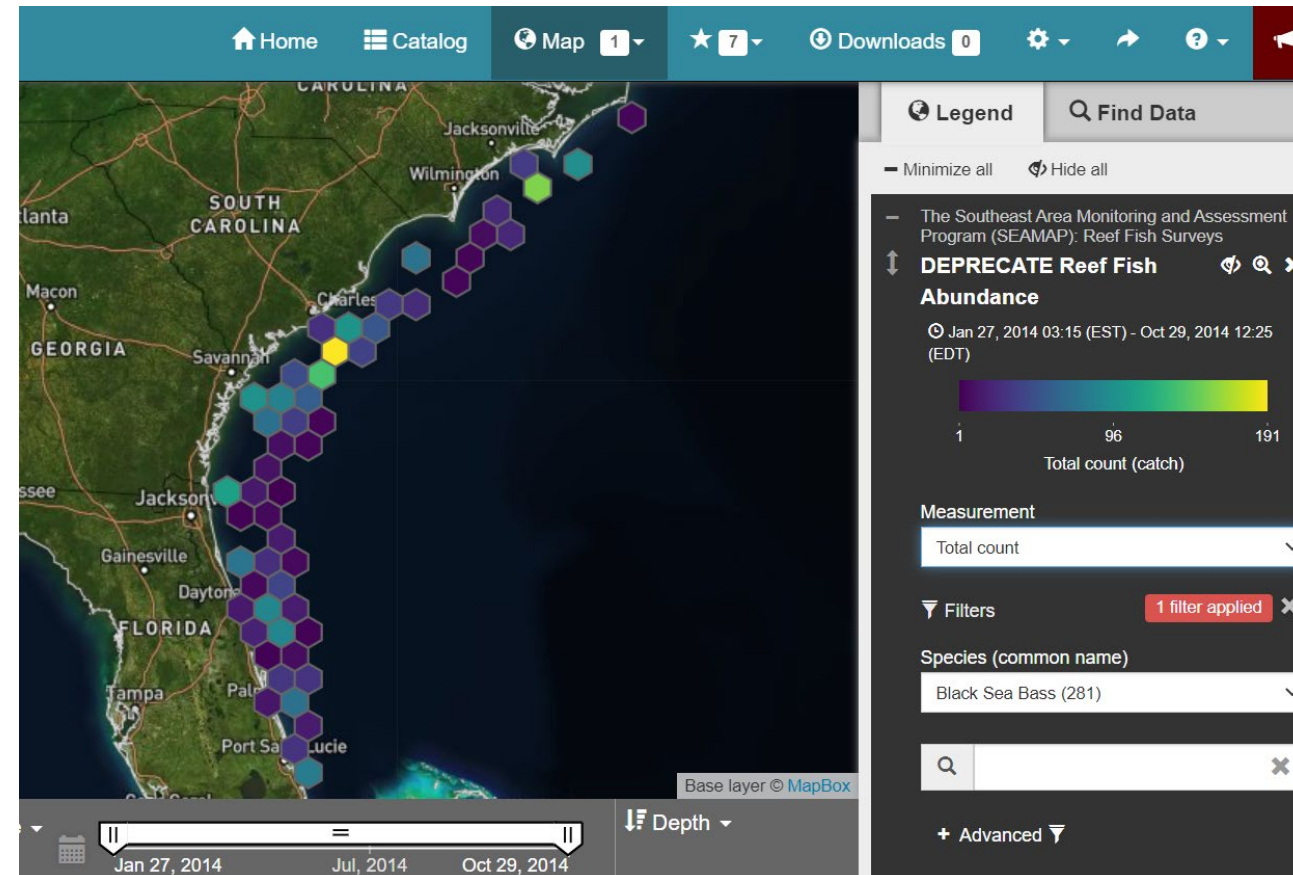
Administrator Interface for data & code table importation & deletion

User-driven queries by Survey and Data Type

User-driven data summaries and comparisons among SEAMAP-SA Surveys & other SECOORA data

Metadata zipped with data download

User tracking



# WHY MIGRATE?

SECOORA mostly physical data  
limited biological data

## Capabilities:

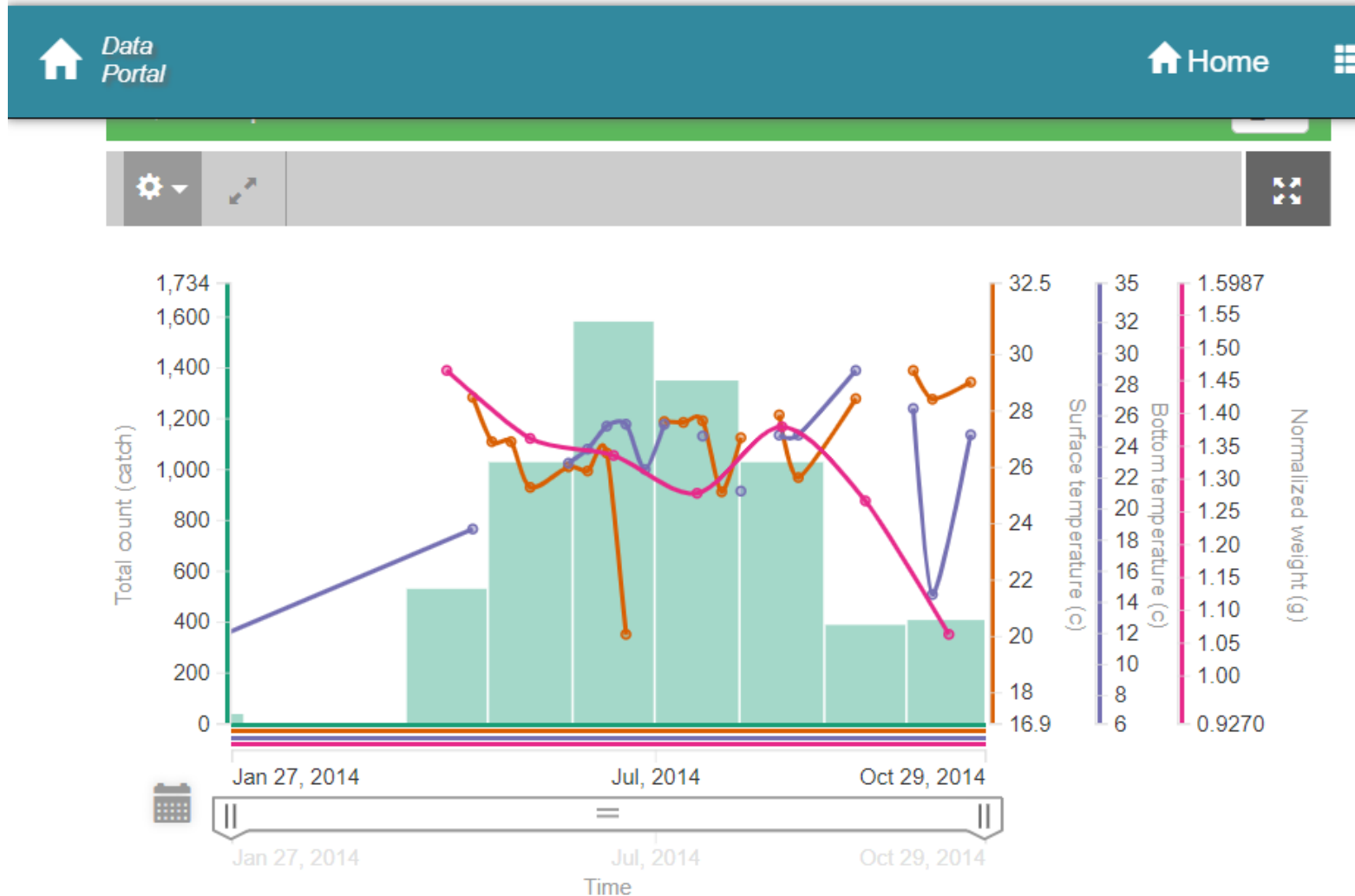
summarization

visualization

mapping

download raw data

**cross comparison of data sets**



# DATA PROCESSING RESPONSIBILITIES

Each survey maintains and provides their data annually (Spring)

- Queries or programs to translate to SEAMAP-SA formats

SCDNR checks format data for online system compatibility

SCDNR uploads and imports into online system

SCDNR deletes and replaces as needed for corrections

Metadata:

Each survey provides updates as needed to SCDNR/ASMFC for website  
(or download package in new system)

# CHALLENGES

Ownership and Branding

Responsibility for Updates

Programmers in Demand