

Overview

Council Member Habitat and Ecosystem Workshop

Renaissance Orlando Airport Hotel
5445 Forbes Place, Orlando

Monday, June 11, 2012

Background: An interactive Habitat and Ecosystem workshop is being conducted to make it easier for Council members to use the online capabilities to enhance Council conservation and management directives. In addition, the developing Council Web Services and Digital Dashboard will highlight and connect regional activities so information on South Atlantic fish species, fish habitat, and fisheries are better represented and understood.

Building from the November 2011 Eco-Regional Coordination Meeting:

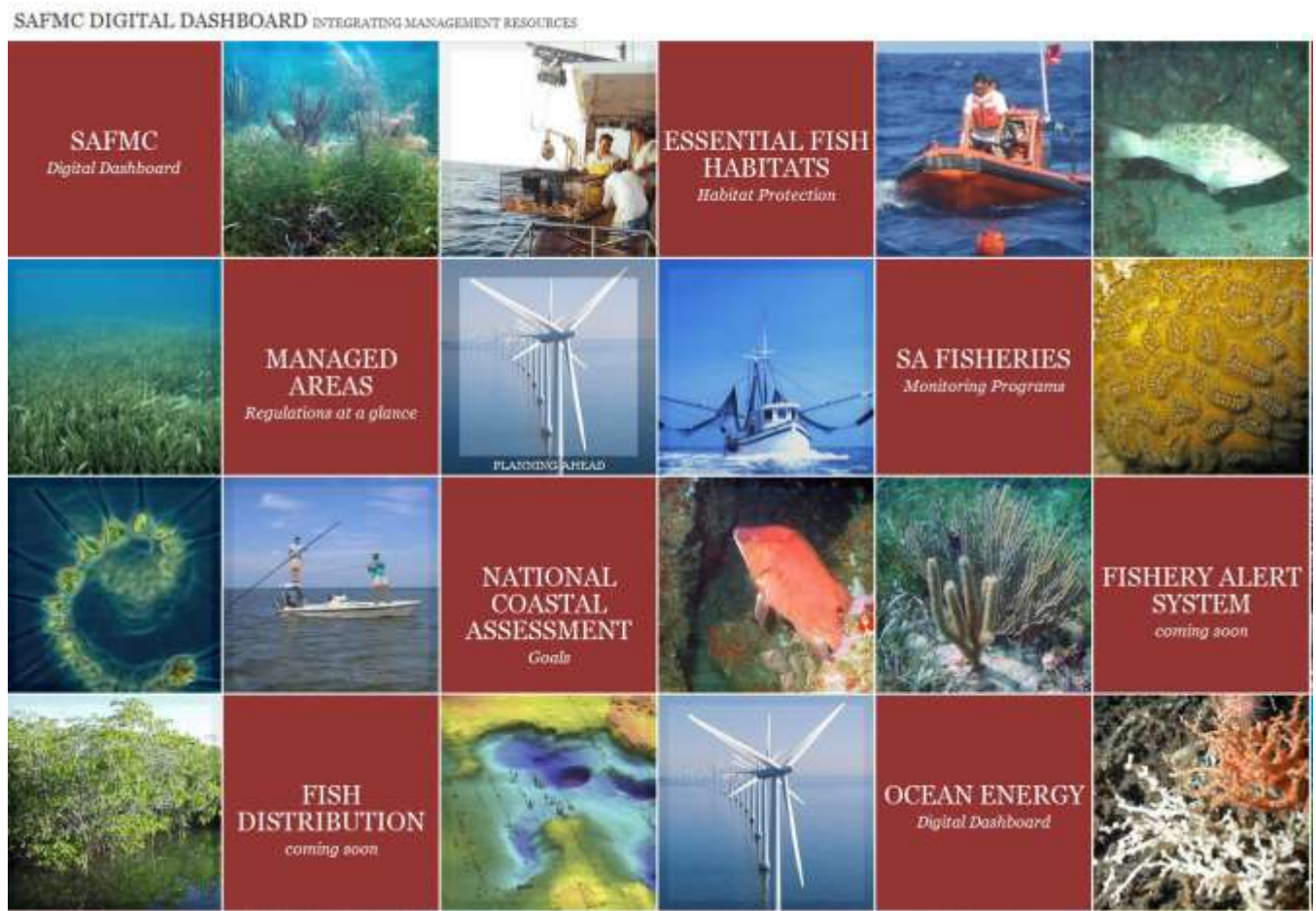
In November 2012, the first South Atlantic Eco-Regional Coordination meeting was held in conjunction with our Habitat and Environmental Protection Advisory Panel meeting to highlight ongoing regional programs and activities. The intent of this meeting was to review efforts and identify opportunities for enhancing regional collaboration and cooperation with partners and the Council in meeting habitat and ecosystem conservation and management directives. The Council Web Services and Digital Dashboard address this intent.

South Atlantic Habitat and Ecosystem GIS Integration and Availability: Since 2003, the State of Florida's Fish and Wildlife Research Institute (FWRI) has worked closely with SAFMC staff to compile, create, and host GIS data through the SAFMC Habitat and Ecosystem Internet Map Server. ESRI's ArcIMS provided the initial solution for the SAFMC to distribute coral, habitat, fisheries, and other relevant data via the Web. As the SAFMC's technological requirements have expanded, FWRI is transitioning to ArcGIS Server (AGS), a cutting edge technology that will enable collaboration among various federal, state, and local agencies to evaluate and analyze fisheries-related information in a new way. By transitioning to the AGS platform, the SAFMC will enhance their online suite of tools to support fisheries management in their region. The transition to AGS leverages FWRI's hardware, software, and personnel to publish and promote SAFMC ecosystem data in the form of shared maps. This approach reduces software deployment costs for SAFMC and disseminates the geographic knowledge needed to improve decision making.

The AGS web applications for the SAFMC are each based on a particular management issue including:

- Essential Fish Habitat
- Managed Areas
- Fisheries Data
- Regulations
- Habitat and Ocean Energy Development

FWRI continues to refine and expand capabilities including a developing EcoSpecies profile and habitat information system. In addition, the regional habitat and ecosystem spatial information systems developed in cooperation with the FWRI (with links to regional partner's efforts) are being integrated into a developing Digital Dashboard for Habitat Conservation, Ecosystem-Based Management, and Spatial Management. The digital dashboard will enhance the accessibility, ease of use, and visibility of collaborative projects. The dashboard will also be useful for highlighting and building connections to other state and regional efforts. The dashboard can be accessed via the following URL
<http://ocean.floridamarine.org/safmc_dashboard>



System Development and Present and Future Capabilities Highlighted During Workshop

SAFMC Fisheries

The SAFMC Fisheries viewer, based on the Flex API, is customized to display fishery independent data collected by the SEAMAP - South Atlantic (SA) component and the Marine Resources Monitoring, Assessment, and Prediction (MARMAP) program. The viewer also serves MARMAP gear types, focal species distributions, bathymetry, and boundaries for the continental shelf, US Federal State and US Territorial Seas. The viewer accessible via the following URL: <http://ocean.floridamarine.org/SA_Fisheries/>

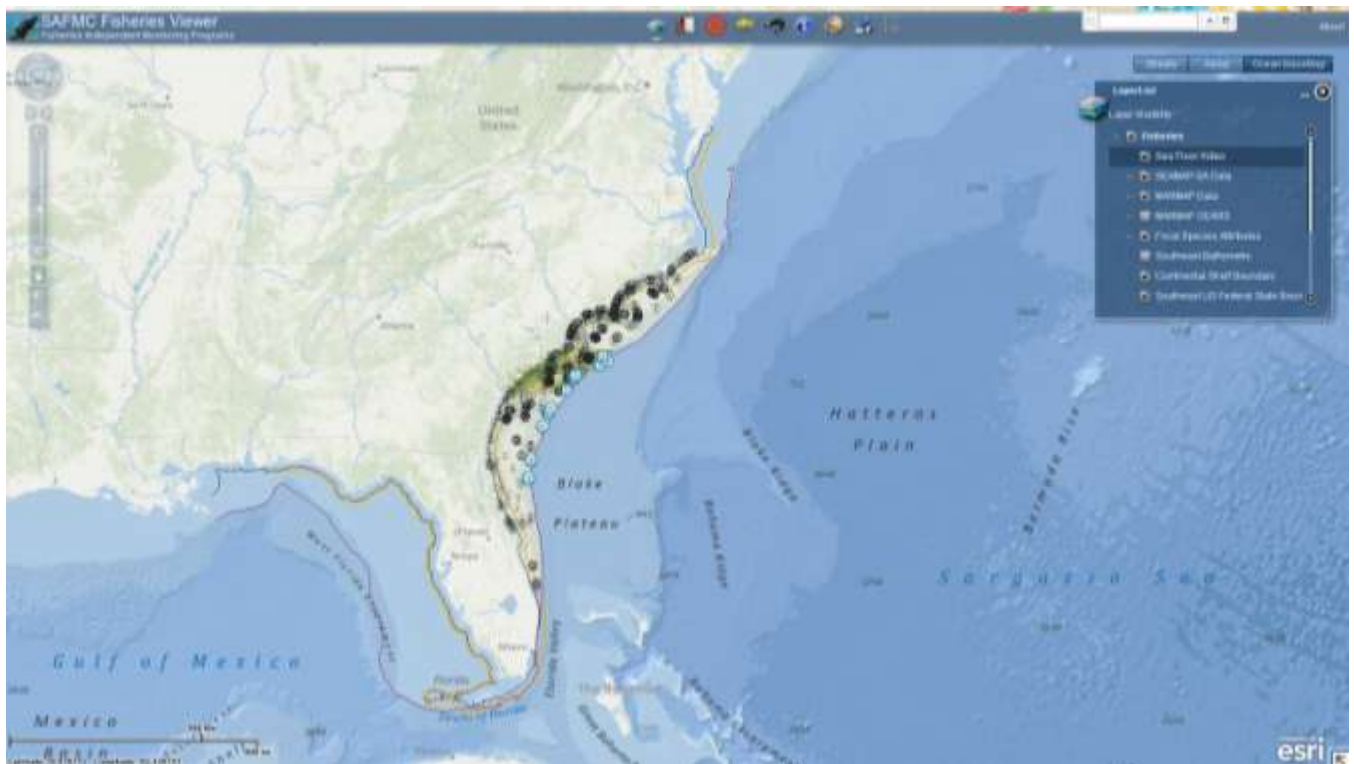


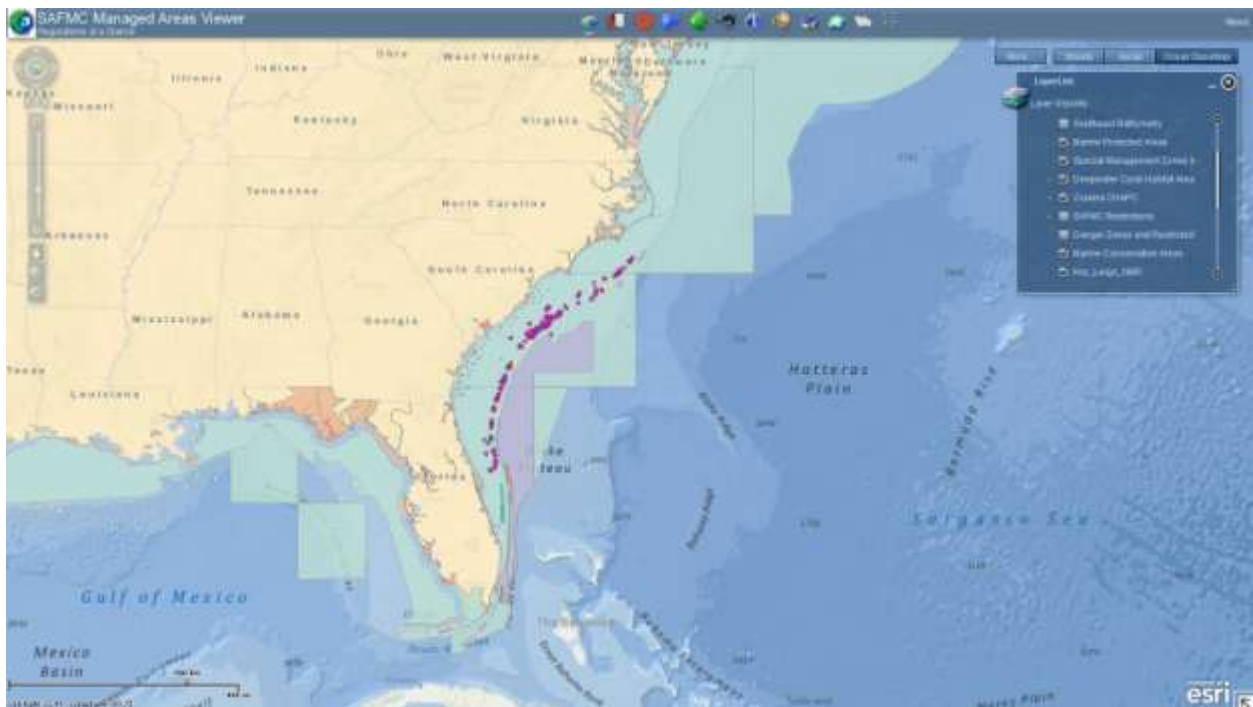
Figure 1. Initial display of the SAFMC Fisheries Flex Viewer.

SAFMC Managed Areas Viewer

This application displays Deepwater Snapper Grouper MPAs, Deepwater Coral Habitat Areas of Particular Concern, Special Management Zones, SAFMC Restrictions, and Proposed Actions. The application also contains several base layers and Federal Marine Conservation Areas.

The viewer is accessible via the following URL:

< http://ocean.floridamarine.org/safmc_managedareas/ >



SAFMC EFH Viewer

This application displays Essential Fish Habitat (EFH) and Essential Fish Habitat-Habitat Areas of Particular Concern (EFH-HAPCs) for several species under SAFMC's jurisdiction. It also displays EFH for Highly Migratory Species (HMS) managed by NOAA Fisheries.

The viewer is accessible via the following URL:

< http://ocean.floridamarine.org/SA_EFH >

