



Kathleen Howington
Kathleen.Howington@
safmc.net

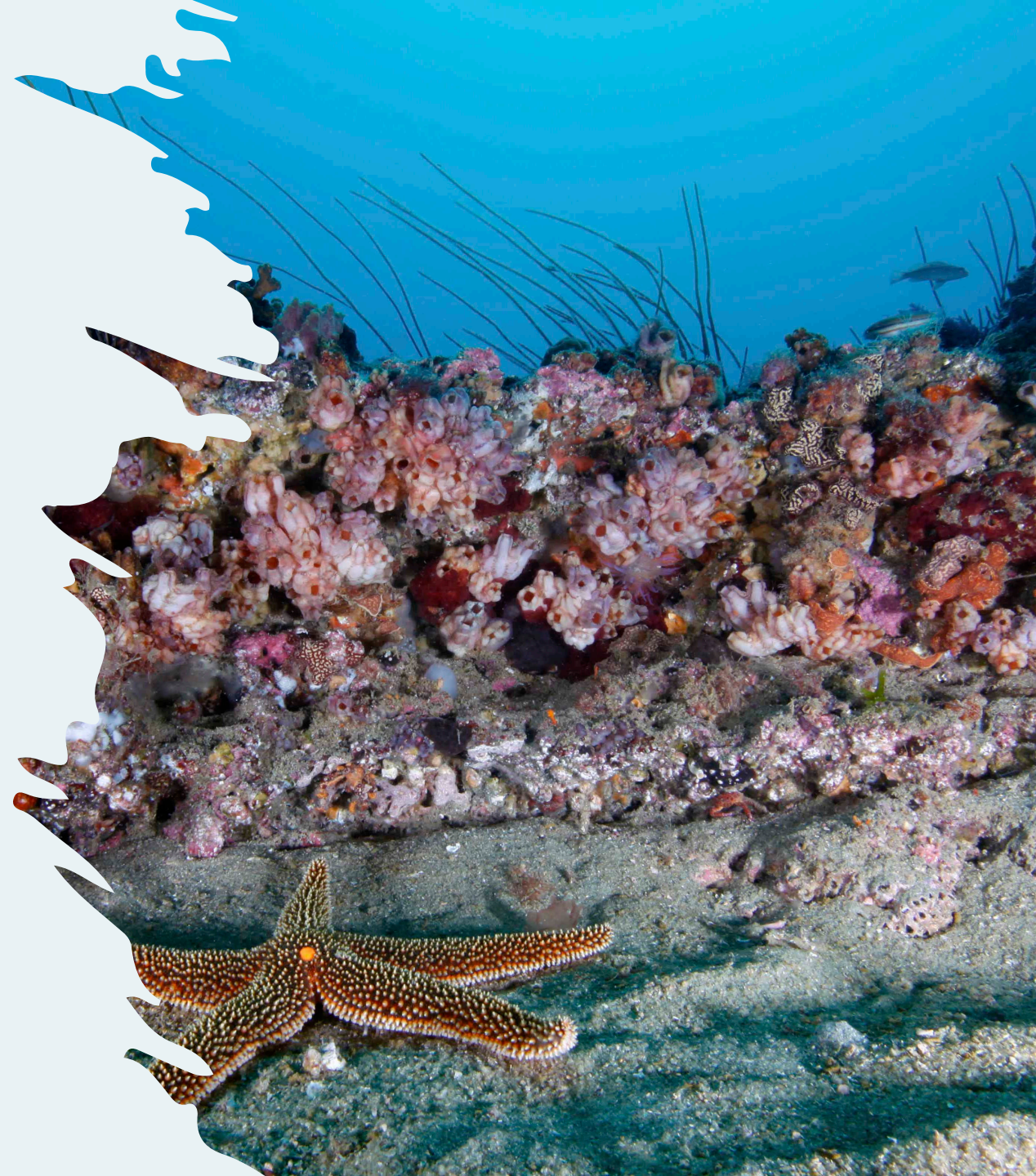
THE SOUTH ATLANTIC FISHERY MANAGEMENT COUNCIL

Next EFH Five-year Review

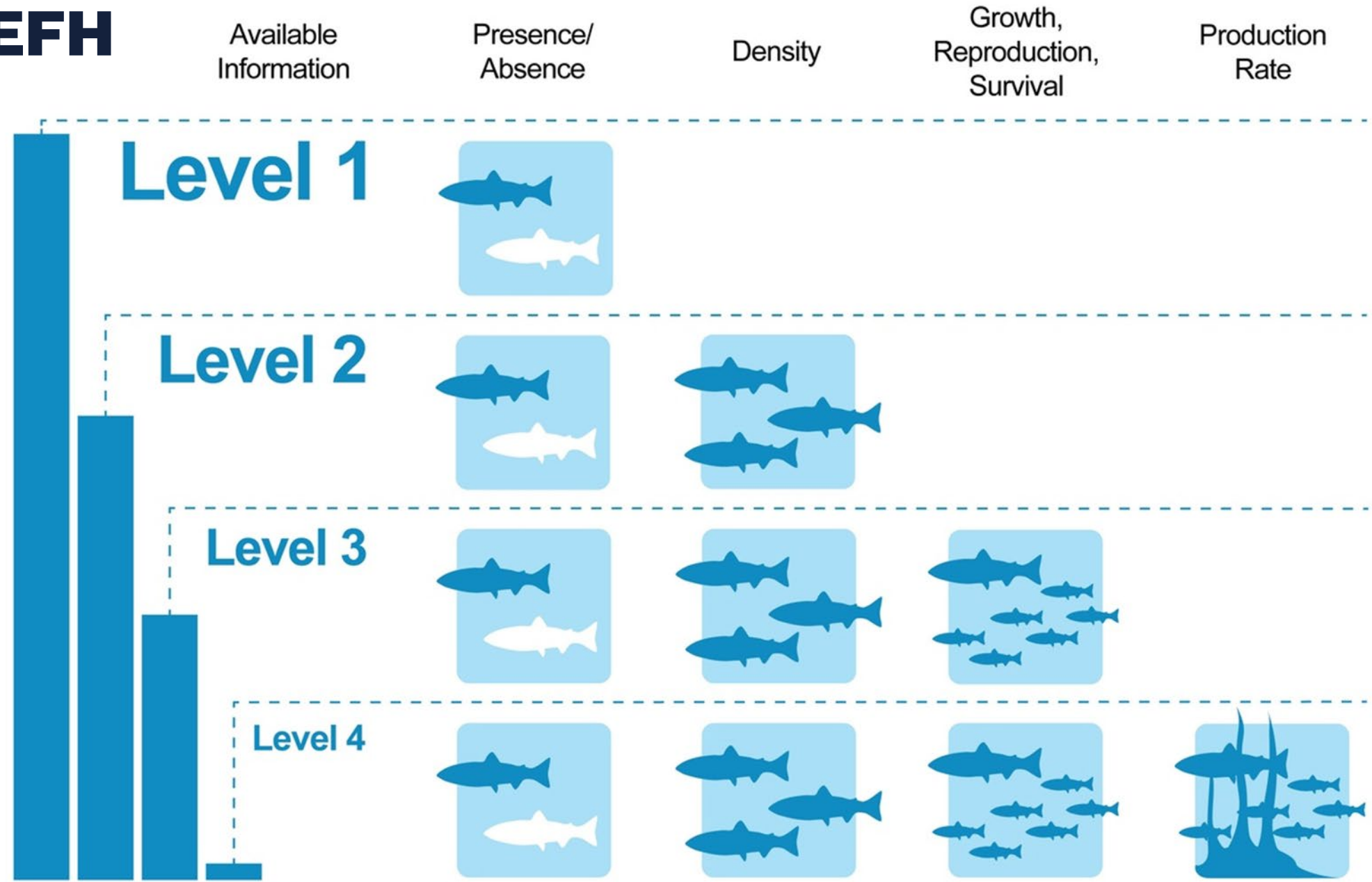


Food Web Working Group Recommendation

- 1) The working group recommends further analysis of the information in Appendix A to identify:
 - A. Total importance of prey or percent overlap across all FMPs
 - B. Number of times prey species are identified as a top prey item
 - C. The EFH by life stage of identified important prey
 - D. Other indicators that a prey item is highly necessary to a species diet
- 2) The working group recommends investigating the integration of the habitat utilized by important prey species into the EFH User Guide for the next 5-year review.



Improving EFH Level

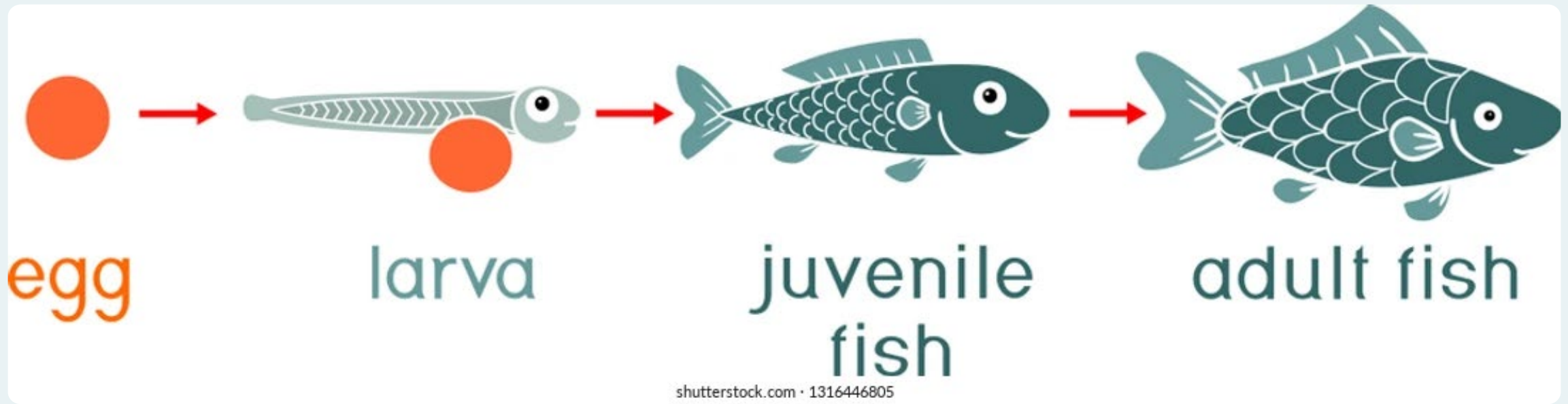


LEVEL 1 - DISTRIBUTION DATA ARE AVAILABLE FOR SOME OR ALL PORTIONS OF THE GEOGRAPHIC RANGE.
LEVEL 2 - HABITAT-RELATED DENSITIES ARE AVAILABLE.
LEVEL 3 - GROWTH, REPRODUCTION, OR SURVIVAL RATES WITHIN HABITATS ARE AVAILABLE.
LEVEL 4 - PRODUCTION RATES BY HABITAT TYPE ARE AVAILABLE.

IRA support

- IRA project 3 funded
 - Updated information on species and fishery spatial distribution
 - Comparisons between existing EFH designations to updated species distributions
 - Recommendations for potential future EFH changes in response to climate change
 - Improved display of EFH information on the Council website
- RFP sent out awaiting responses





Improving Life Stage information

- Required by MSA
- What Data is available?



An underwater photograph showing a large school of small, silvery fish swimming in the upper half of the frame. Below them is a diverse coral reef with various species of coral in shades of red, orange, yellow, and brown. The text "Any other goals?" is overlaid in white, bold font in the center of the image.

Any other goals?