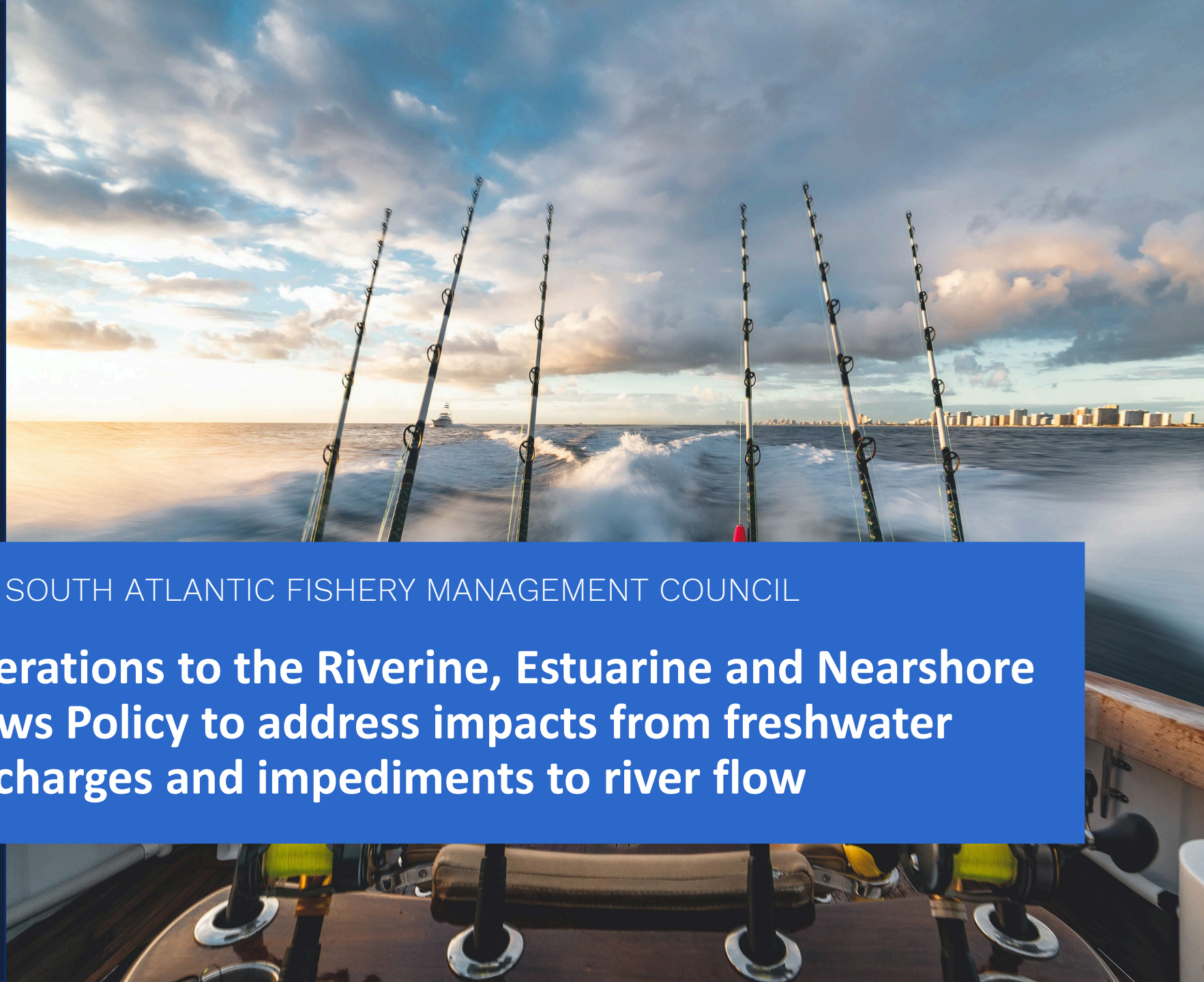




Matt Kenworthy  
matthew.kenworthy@  
myfwc.com

THE SOUTH ATLANTIC FISHERY MANAGEMENT COUNCIL

**Alterations to the Riverine, Estuarine and Nearshore  
Flows Policy to address impacts from freshwater  
discharges and impediments to river flow**





# Flow policy

---

- In April 2024, the HEAP received a presentation on the impacts of flow alterations and storm drainage on the Indian River Lagoon
- In response to this presentation, the HEAP added revisions to the policy to the work plan
- SAFMC agreed to the addition in December 2024
- The working group has met three times



# Edits

1. Added in information on water quality, runoff, and stormwater management
2. Updated and reorganized citations and references
3. Updated state-specific rules
4. Reorganized the policy section to increase efficiency
5. Removed mentions of anadromous and diadromous



# Major changes for more input

- Adding in water quality details
- Expanding projects from mainly dams and water withdrawal to:
  - Dikes
  - Tidal gates
  - Roadway/concrete runoff
  - Wiers
  - Culverts
  - Irrigation
  - Shallow Water Dredging



An aerial photograph of a massive, curling ocean wave. The water is a deep teal color, transitioning to a lighter, frothy white at the crest of the wave. Three birds, likely albatrosses, are captured in flight over the water. One bird is positioned near the top of the wave's crest, another is further to the right, and a third is lower down in the water. The overall scene conveys a sense of vastness and natural power.

**Work Ongoing**

**Volunteers for help in policy  
writing for these projects?**