



NOAA
FISHERIES

HCD South Atlantic and Caribbean Branch

SAFMC Habitat and Environmental Protection
Advisory Panel Meeting

April 3, 2024

Pace.Wilber@noaa.gov

HCD South Atlantic and Caribbean Branch



Fish Passage Restoration

- Fritz Rohde (Beaufort)
- Kevin Mack (Charleston)*
- Vacant (TBD)

Coral Conservation

- Jocelyn Karazsia (West Palm Beach)
- Xaymara Serrano (West Palm Beach)
- Dinorah Chacin (St Croix)

EFH Conservation

- Jordan Wolfe (Charleston)
- Kurtis Gregg (Jacksonville)**
- Jose A. Rivera (Puerto Rico)
- Anne Deaton (Charleston/Beaufort)*
- Lisa Wickliffe (Charleston/Beaufort)*

Branch Chief

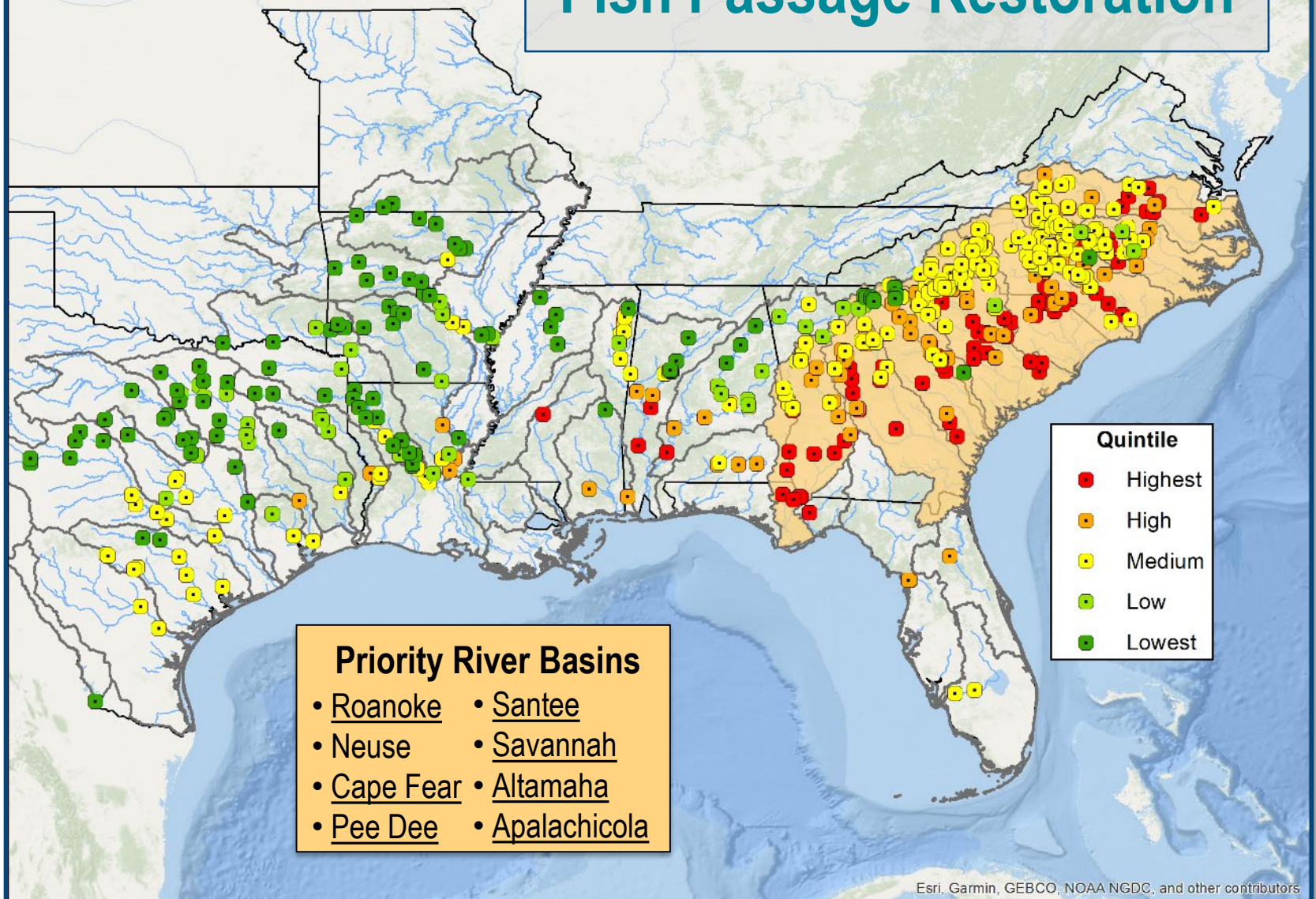
- Pace Wilber (Charleston)

*Wind, BIL, and IRA projects

**FDOT liaison



Fish Passage Restoration

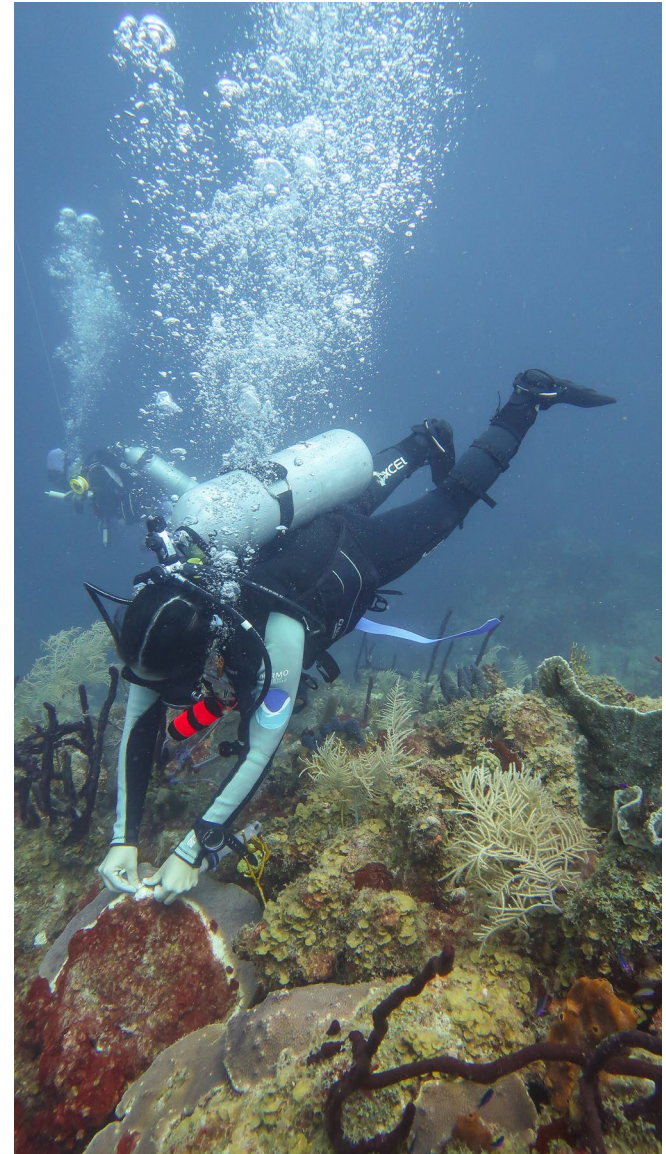


Coral Conservation

- NOAA CRCP Fisheries Liaisons (USVI and FL)
- Assist enactment of Local Action Strategies
- Monitor and treat corals exhibiting SCTLD



- Research to support coral conservation
 - Sediment accumulation on coral habitat at major ports (EPA and FDEP)
 - Herbivory and other factors affecting coral restoration success (SEFSC)
 - Sedimentation effects on wound healing (NCCOS)

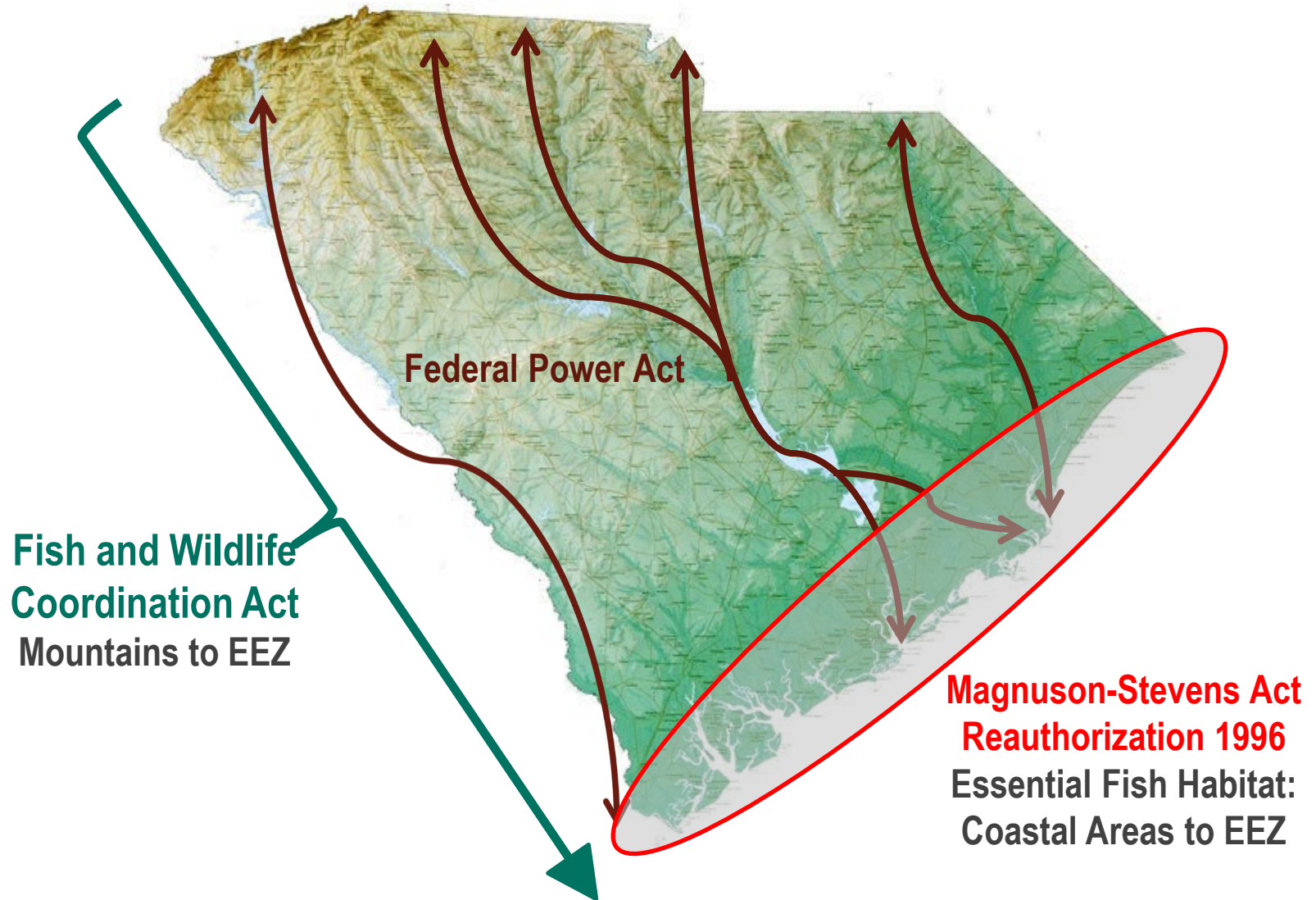


Dr. Dinorah Chacin applies antibiotic paste to *Orbicella* colony infected with SCTLD.

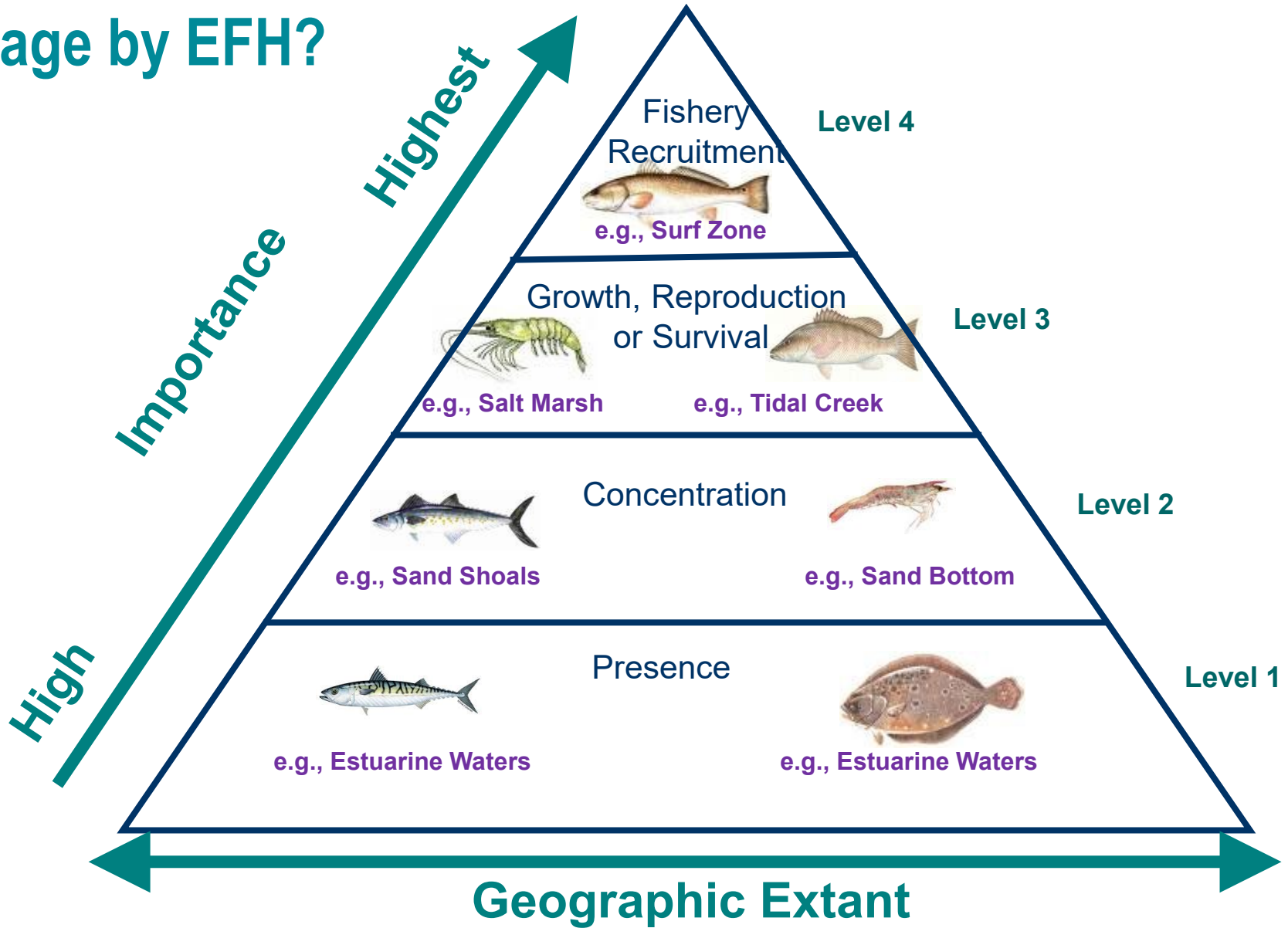
Magnuson-Stevens Act: Essential Fish Habitat

- Each Federal agency shall consult with the Secretary with respect to any action authorized, funded, or undertaken, or proposed to be authorized, funded, or undertaken, by such agency that may adversely affect any essential fish habitat identified under this Act. (MSA Section 305(b)(2))
- If the Secretary receives information . . . that an action authorized, funded, or undertaken, or proposed to be authorized, funded, or undertaken . . . would adversely affect any essential fish habitat identified under this Act, the Secretary shall recommend . . . measures that can be taken . . . to conserve such habitat. (MSA Section 305(b)(4)(A))
- Within 30 days after receiving a recommendation under subparagraph (A), a Federal agency shall provide a detailed response . . . The response shall include a description of measures proposed by the agency for avoiding, mitigating, or offsetting the impact of the activity on such habitat. In the case of a response that is inconsistent with the recommendations of the Secretary, the Federal agency shall explain its reasons for not following the recommendations. (MSA Section 305(b)(4)(B))

Magnuson-Stevens Act, FWCA and FPA



Triage by EFH?



SAFMC Habitat “Policy” Statements

50 CFR 600.815 Contents of Fishery Management Plans

50 CFR 600.815(a) Mandatory contents

50 CFR 600.815(a)(4) Non-fishing related activities that may adversely affect EFH. FMPs must identify activities other than fishing that may adversely affect EFH. Broad categories of such activities include, but are not limited to: dredging, filling, excavation, mining, impoundment, discharge, water diversions, thermal additions, actions that contribute to non-point source pollution and sedimentation, introduction of potentially hazardous materials, conversion of aquatic habitat that may eliminate, diminish, or disrupt the functions of EFH. For each activity, the FMP should describe known and potential adverse effects to EFH.

50 CFR 600.815(a)(6) Conservation and enhancement.

FMPs must identify actions to encourage the conservation and enhancement of EFH, including recommended options to avoid, minimize, or compensate for the adverse effects identified pursuant to paragraphs (a)(3) through (5) of this section, especially in habitat areas of particular concern.

SAFMC Habitat “Policy” Statements

50 CFR 600.815 Contents of Fishery Management Plans

50 CFR 600.815(a) Mandatory contents

50 CFR 600.815(a)(4) Non-fishing related activities that may adversely affect EFH. FMPs must identify activities other than fishing that may adversely affect EFH. Broad categories of such activities include, but are not limited to: dredging, filling, excavation, mining, impoundment, discharge, water diversions, thermal additions, actions that contribute to non-point source pollution and sedimentation, introduction of potentially hazardous materials, conversion of aquatic habitat that may eliminate, diminish, or disrupt the functions of EFH. For each activity, the FMP should describe known and potential adverse effects to EFH.

Current Habitat Policy Statements (* = also in 1998 Habitat Plan)

Food Webs and Connectivity

Climate Variability and Fisheries

Beach Nourishment*

Flow Alterations

Artificial Reefs

Marine Aquaculture*

Marine Submerged Aquatic Vegetation*

Energy Exploration and Hydropower*

Non-native and Invasive Species



Major EFH Conservation Efforts (April 2024)

North Carolina

- Kitty Hawk and Carolina Long Bay Offshore Wind Projects
- Wilmington Harbor Navigation Improvement Project
- Evaluations of Environmental Windows for Dredging

South Carolina

- Charleston Post 45 Monitoring
- Mark Clark Expressway

Georgia

- SHEP Monitoring
- Evaluations of Environmental Windows for Dredging

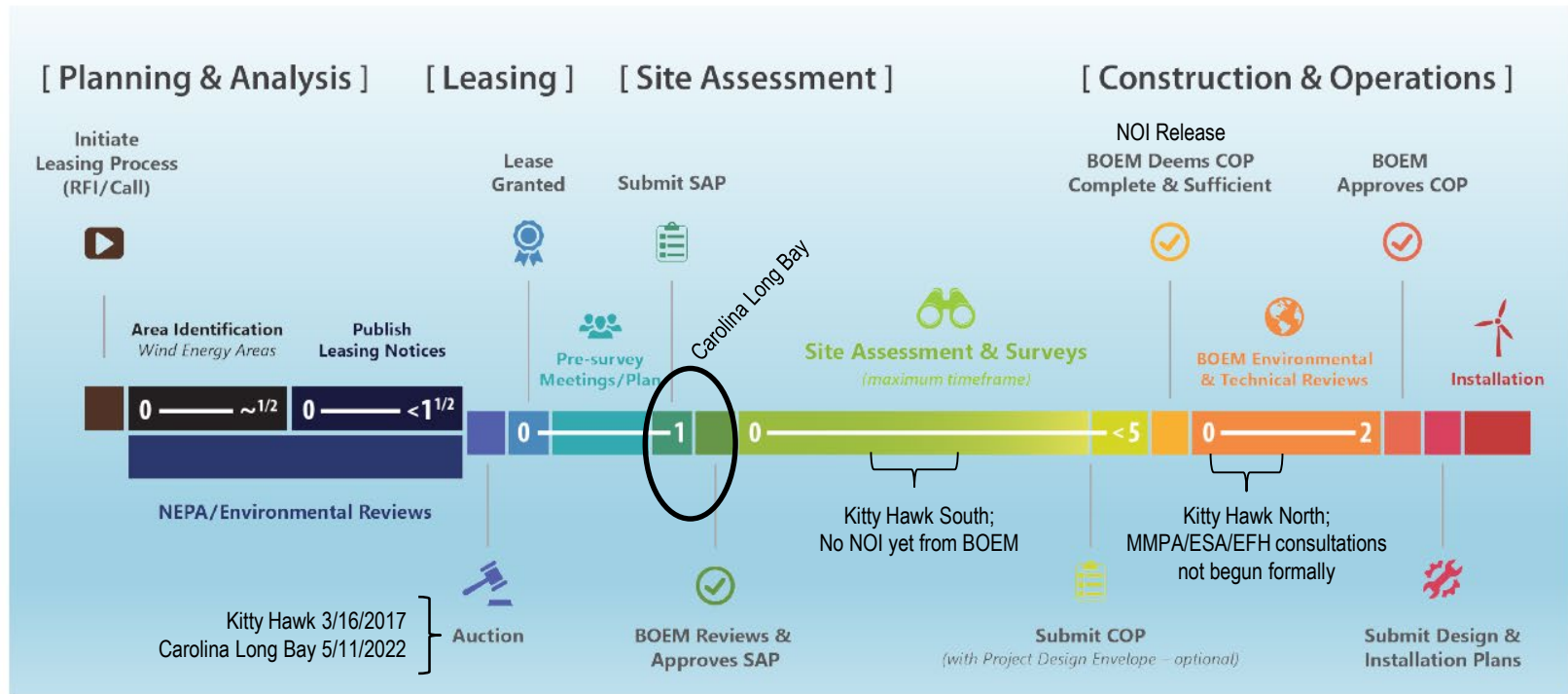
Florida (Atlantic Coast)

- Port Everglades Deepening Project

Caribbean

- Coral Bay Marina (St John), Limetree Bat (St Croix)
- Christiansted Harbor (St Croix)

Renewable Energy Process: From RFI/Call to Operation



BOEM Bureau of Ocean Energy Management

Notes added March 15, 2024

3



NOAA FISHERIES

PORT EVERGLADES DEEPENING PROJECT



Source: porteverglades.net

