



Kathleen Howington
Kathleen.Howington@
safmc.net

THE SOUTH ATLANTIC FISHERY MANAGEMENT COUNCIL


Habitat Blueprint Update



Website Update

<https://safmc.net/fishery-management-plans/habitat/>
Mapper work ongoing





- Home
- Regulations
- Meetings ✓
- Fishery Management ✓
- News & Updates
- About the Council ✓
- Habitat and Ecosystem
- Best Fishing Practices
- Citizen Science Program ✓
- Science & SEDAR
- Public Comment

Search

South Atlantic Fishery Management Council

GET INVOLVED

[f](#) [t](#) [@](#) [v](#)

[Home](#) / [Fishery Management](#) / Habitat and Ecosystem

Habitat and Ecosystem

The South Atlantic Fishery Management Council (SAFMC or Council) works to conserve habitats and their ecosystem functions to ensure the long-term sustainability of fishery resources by identifying and protecting habitats.



Essential Fish Habitat

The Council is required under the Magnuson-Stevens Act to identify and describe Essential Fish Habitat (EFH), minimize adverse effects caused by fishing on EFH, and identify other actions to encourage habitat protection. Priority areas within EFH for conservation and management are called EFH-Habitat Areas of Particular Concern (EFH-HAPCs or HAPCs) and are designated based on ecological importance.

Resources

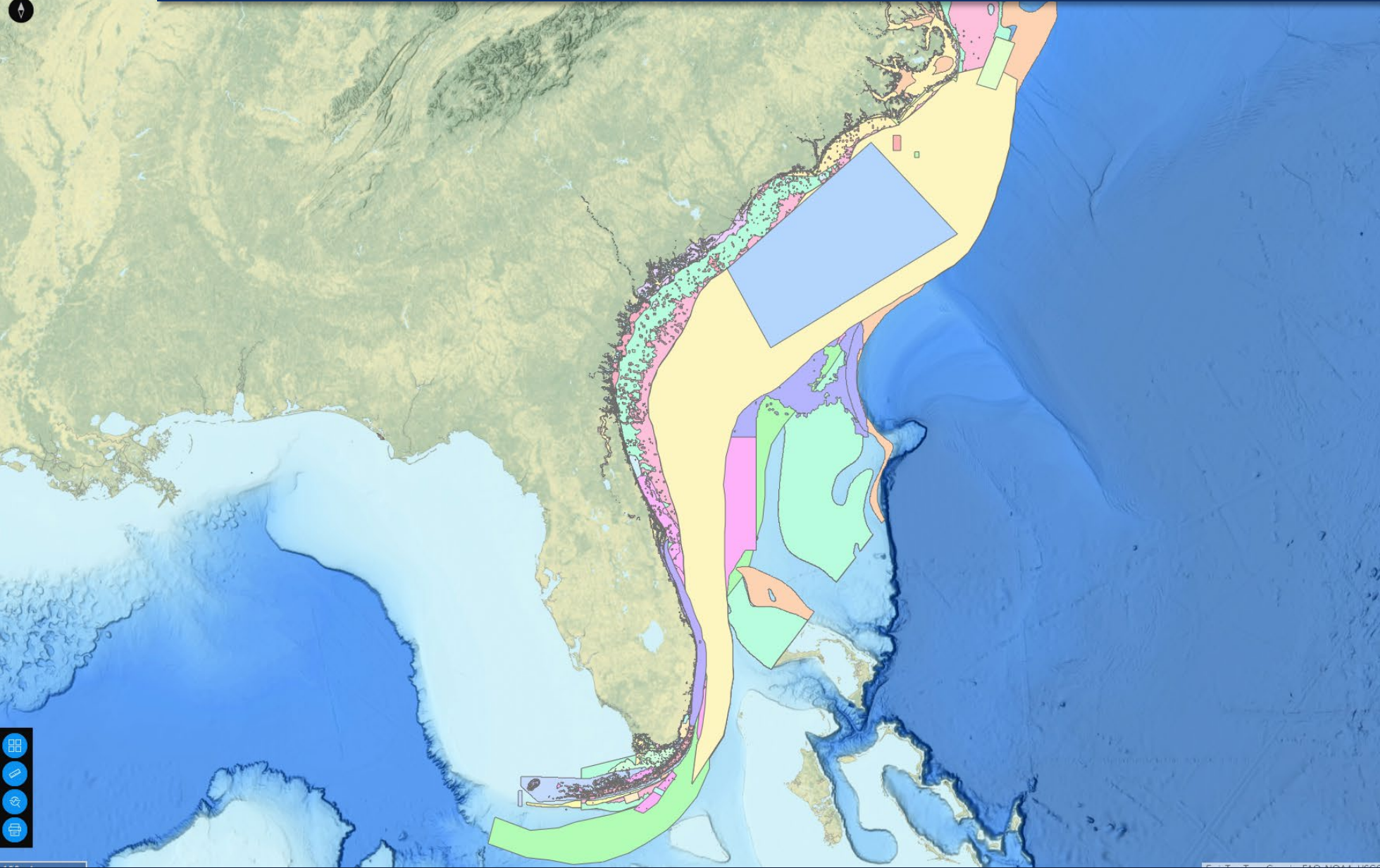
EFH USER GUIDE

MANAGED AREAS

EFH MAPS



EFH Mapper



- ☒ Coral , Coral Reef, Live/Hard bottom EFH
- ☒ Coral, Coral Reef, Live/Hard bottom HAPC
- ☒ Dolphin Wahoo EFH
- ☒ Dolphin Wahoo HAPC
- ☒ Golden Crab EFH
- ☒ Shrimp EFH
- ☒ Shrimp HAPC
- ☒ Snapper Grouper EFH
- ☒ Snapper Grouper HAPC
- ☒ Spiny Lobster EFH
- ☒ Spiny Lobster HAPC
- ☒ Tilefish HAPC



Tools and partner evaluation

- Evaluation goals
 - Identify cost, audiences /users, and information needed for maintaining tools
 - Identify purpose mission and goals for partnerships
 - Benefits and costs to SAFMC
 - Establish communication pathways for partners

Tools

- SAFMC Atlas –
 - SAFMC Digital Dashboard
 - Provides a platform for access to all Council Web Services and all spatial layers.
 - Still exists all layers are downloadable of the new habitat mapper
 - SAFMC Management Areas
 - Provides spatial representations of MPAs, C-HAPCs, SMZs, Spawning SMZs, GCAAs, SFAAs, and Spiny Lobster Trap Gear FMAs.
 - Still exists on the SAFMC-managed area pages

Tools

- SAFMC Atlas –
 - SA Fisheries
 - Provides abundance summaries for managed species.
 - The SEAMAP website requires an annual fee for updating and annual data updates
 - SEAMAP has decided to not move forward with support
 - SAFMC EFH
 - Visual representation of SAFMC
 - Still exists on the SAFMC website

Partners



Partners on the HEAP

- NOAA HCD
- BOEM
- US DOD US Dept navy
- State CZMs
- NOAA NOS
- State fishery Agencies
- Florida Fish and Wildlife Resource Institute (FWRI)
- National Oceanic and Atmospheric Administration (NOAA) Southeast Fisheries Science Center (SEFSC)
- National Marine Sanctuaries (NMS): Grays Reef and/or Florida Keys NMS
- Harbor Branch Oceanographic Institute (HBOI)/Florida Atlantic University (FAU) NOAA Cooperative Institute for Ocean Exploration, Research & Technology (CIOERT)
- North Carolina State University (NCSU) - Department of Marine, Earth, and Atmospheric Sciences
- Atlantic Coast Fish Habitat Partnership

Partners

SEAMAP

- Kathleen Chair of Habitat ID workgroup

National Oceanic and Atmospheric Administration (NOAA) National Ocean Service (NOS) Office of Ocean Exploration

- Kathleen is the Council contact
- Contacts: Heather Coleman, DSCRTP, and Kasey Cantwell, OOE

Southeast Coastal Ocean Observing Regional Association (SECOORA)

- Julia Byrd and Chip Collier are the council contacts
- Contact: Debra Hernandez or Jennifer Dorton

Integrated Ocean Observing Program (IOOS)

- SECOORA is the regional contact

Partners

PEW

- Has recently become more focused on inshore and oyster reef restoration
- Contact: Lora Clarke – she remains engaged and attends SAFMC meetings.

TNC

- Kathleen and Chip are the Council contacts
- Contacts: Mary Conley, David Moss

National Oceanic and Atmospheric Administration (NOAA) Habitat Conservation Division (HCD) Deep Sea Coral Research

- Kathleen and Chip are the Council contacts
- Contact Heather Coleman or Jocelyn Karazia

National Fish Habitat Board Southeast Resource Partnership (SARP)

- The SAFMC is a partner.
- Kathleen is the Council contact

Outreach and Communication strategy

Council role with habitat is not well understood



Outreach and communication efforts should focus on clearly stating the Council's habitat obligations under the MSA and other federal laws, steps taken by the Council to meet its obligations, and the Council's overall approach to habitat issues.

Outreach and Communications Advisory Panel Strategy Recommendations

- Use the website and story maps to increase awareness of the Council's role in habitat protection;
- Consider other Councils' websites and presentation of EFH;
- Highlight habitat protection work separately from ecosystem-based management work;
- Develop a short video on what the Council can and cannot do relevant to habitat;

Outreach and Communications Advisory Panel Strategy Recommendations

- Make a general connection between healthy habitat and healthy fisheries;
- Use an infographic to illustrate the role of the Council;
- Include information on water quality
- Start communication with a focus on public concerns related to habitat,
- Share ways the public can make an active impact.

Outreach and Communication Plan



Who is our audience?



What are our key takeaways?



What are the goals of outreach?



What tools do we have to communicate?



What are key issues we need to address with outreach?



What are the public's concerns?