



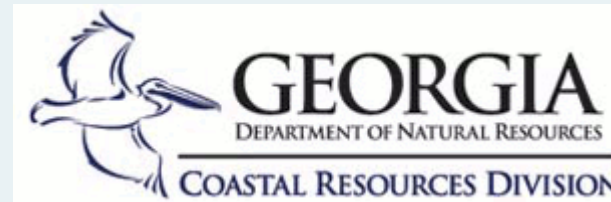
Kathleen Howington
Kathleen.Howington@
safmc.net

THE SOUTH ATLANTIC FISHERY MANAGEMENT COUNCIL

Update on Outstanding Habitat Blueprint Tasks



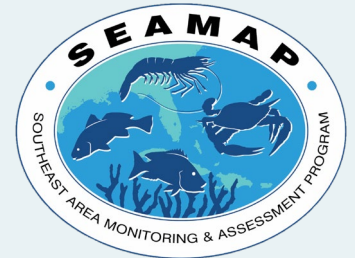
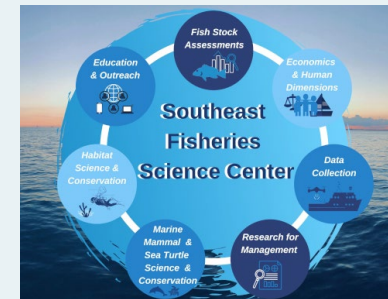
Website update: Partners



NORTH CAROLINA
Environmental Quality



SC DEPARTMENT of
**ENVIRONMENTAL
SERVICES**



<https://safmc.net/fishery-management-plans/habitat/>



Website Examples

Thanks to the Mackerel Cobia Port Meetings Planning Team!



Partners and Data Resources



- [Southeast Fisheries Science Center](#)
- [Southeast Regional Office](#)
- [Office of Science and Technology](#)
- [Marine Recreational Information Program](#)



Stock Status Reports

Reports the current stock status (overfished and/or overfishing) for stock nationwide.

FOSS

Fishery one-stop shop for commercial and recreational datasets.

Stock SMART Tool

Repository for stock assessments.

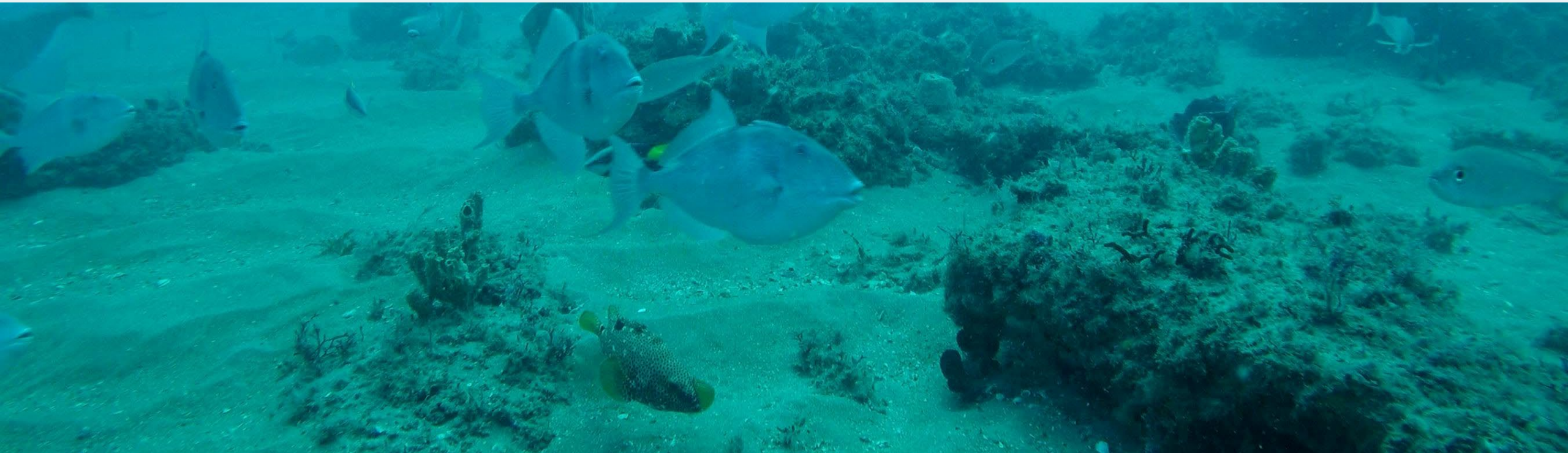
Outreach and Communication strategy: FAQs



- EFH:
 - What is it?
 - Why does it exist
 - How can a federal council designate inshore habitat as EFH?
- Council mandates and responsibilities:
 - Explain what the policies are and how they are used.
 - How do ecosystems get integrated into management decisions?
- Define:
 - CHAPC versus HAPC versus EFH?
 - Explain EBFM versus EBM
- What habitats do we have in our region? What are the percentages?
- What's changing in our habitats?
- What's changing in our ecosystems?
- Who is responsible for managing terrestrial/freshwater/nearshore effects on federal habitats?

Outreach and Communication strategy: FAQs

- How is this information going to be presented?
- On the website, printed material,
- Who else would be interested in this document?



The blueprint tasks are complete.
We will return to it when needed.

