

Atlantic Coast

Recreational Dolphin Catch Statistics

Marine Recreational Statistics Survey (MRFSS), 1989-2003

And

Marine Recreational Information Program (MRIP), 2004-2014

Prepared

8/28/2015

List of Tables

Table 1. North Carolina recreational dolphin catch (number of fish) by catch type, 1989-2014.....1

Table 2. North Carolina recreational dolphin catch (pounds of fish) by mode and %, 1989-2014. ....2

Table 3. North Carolina recreational dolphin catch (number of fish landed) by mode and %, 1989-2014.....2

Table 4. South Atlantic recreational dolphin landings (number of fish) by state, 1989 through 2014. ....4

Table 5. South Atlantic recreational dolphin landings (pounds of fish) by state, 1989 through 2014. ....5

Table 6. Mid-Atlantic dolphin catches (A+B1+B2, number of fish) by state, 1989-2014.....6

Table 7. Mid-Atlantic dolphin catches (pounds of fish) by state, 1989-2014. ....7

Table 8. North Carolina recreational dolphin landings by mode of fishing, 1989-2014. ....8

Table 9. North Carolina recreational dolphin landings (pounds of fish) by wave of fishing, 1989-2014. ....9

Table 10. North Carolina recreational charterboat dolphin catch and trips in EEZ, 1989-2014.....10

Table 11. North Carolina recreational private boat dolphin catch and trips in EEZ, 1989-2014. ....11

Table 12. US Recreational Dolphin Catch by State, 2014. ....12

Table 13. East Florida recreational dolphin catch by area fished, 1989-2014.....15

Table 14. Recreational Dolphin Catch (pounds) in Mid-Atlantic and South Atlantic, 1989-2014. ....16

Table 15. Recreational Dolphin Catch (pounds) in Caribbean and South Atlantic, 1989-2014. ....17

Table 16. Recreational Dolphin Landings (number of fish) North of Cape Hatteras, 2004-2014. ....18

Table 17. Recreational Dolphin Landings (number of fish) South of Cape Hatteras, 2004-2014. ....18

Table 18. Frequency distribution of number of fish caught per successful angler trip. Percent and cumulative percent provided, 1989-1994. ....20

Table 19. Frequency distribution of number of fish caught per successful angler trip. Percent and cumulative percent provided, 1995-2000. ....21

Table 20. Frequency distribution of number of fish caught per successful angler trip. Percent and cumulative percent provided, 2001-2006. ....22

Table 21. Frequency distribution of number of fish caught per successful angler trip. Percent and cumulative percent provided, 2007-2012. ....23

Table 22. Frequency distribution of number of fish caught per successful angler trip. Percent and cumulative percent provided, 2013-2014. ....24

Table 23. North Carolina recreational dolphin mean weight by wave, 1989-2014.....25

Table 24. Number of angler trips in North Carolina by mode in the EEZ, 1989-2014. ....26

Table 25. Directed angler trips in North Carolina for dolphin (when primary target) in the EEZ, 1989-2014...27

Table 26. Directed angler trips by mode in EEZ when dolphin were found in catch (A+B1), 1989-2014.....28

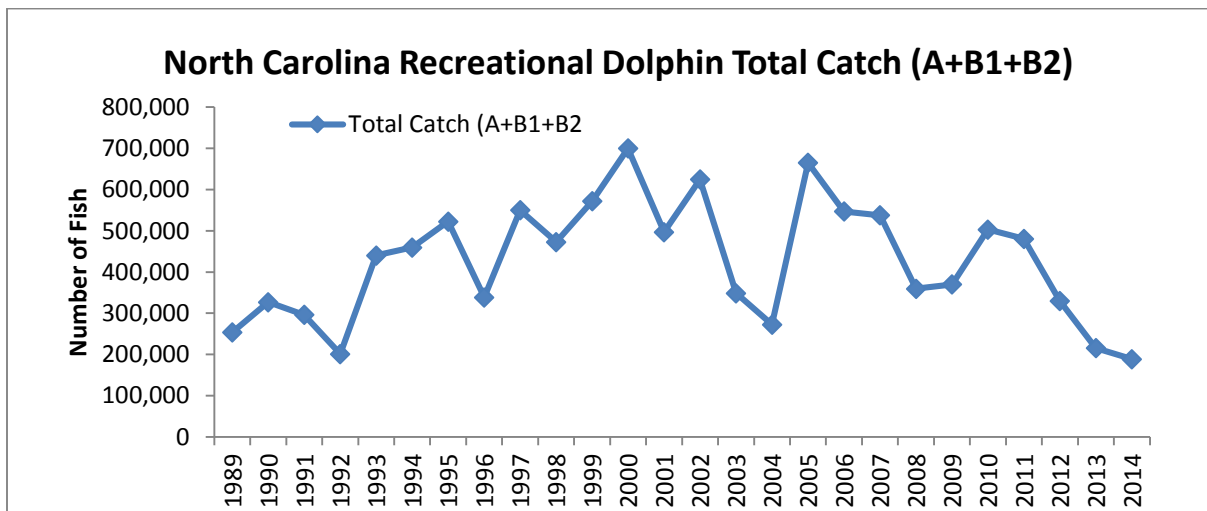
Table 27. North Carolina recreational yellowfin tuna landings along with dolphin landings (pounds), 1989-2014. ....29

## List of Figures

Figure 1. North Carolina recreational dolphin catch (total number of fish including releases), 1989-2014. ....	1
Figure 2. North Carolina recreational dolphin catch (pounds of fish) by mode, 1989-2014. ....	2
Figure 3. North Carolina recreational dolphin catch statistics (percent of catch) by mode, 1989-2014. ....	3
Figure 4. South Atlantic recreational dolphin landings (number of fish) by state, 1989-2014. ....	4
Figure 5. South Atlantic recreational dolphin landings (pounds of fish) by state, 1989 through 2014. ....	5
Figure 6. Mid-Atlantic dolphin catches (number of fish, A+B1+B2) by state, 1989-2014. ....	6
Figure 7. Mid-Atlantic dolphin catches (pounds of fish) by state, 1989-2014. ....	7
Figure 8. North Carolina recreational dolphin landings(number of fish) by mode of fishing, 1989-2014. ....	8
Figure 9. North Carolina recreational dolphin landings (pounds of fish) by wave, 1989-2014. ....	9
Figure 10. North Carolina recreational charterboat dolphin catch and trips in EEZ, 1989-2014. ....	10
Figure 11. North Carolina recreational private boat dolphin catch and trips in EEZ, 1989-2014. ....	11
Figure 12. US Recreational Dolphin Catch by State, 2014. ....	12
Figure 13. EEZ East Florida Recreational Dolphin Catch, Charterboat and Private Boat, 1989-2014. ....	13
Figure 14. EEZ Georgia Recreational Dolphin Catch, Charterboat and Private Boat, 1989-2014. ....	13
Figure 15. EEZ North Carolina Recreational Dolphin Catch, Charterboat and Private Boat, 1989-2014. ....	13
Figure 16. EEZ South Carolina Recreational Dolphin Catch, Charterboat and Private Boat, 1989-2014. ....	14
Figure 17. East Florida recreational dolphin catch by area fished, 1989-2014. ....	15
Figure 18. Recreational Dolphin Catch (pounds) in Mid-Atlantic and South Atlantic, 1989-2014. ....	16
Figure 19. Recreational Dolphin Catch (pounds) in Caribbean and South Atlantic, 1989-2014. ....	17
Figure 20. Recreational Dolphin landings (number of fish) north of Cape Hatteras, 2004-2014. ....	19
Figure 21. Recreational Dolphin landings (pounds of fish) north of Cape Hatteras, 2004-2014. ....	19
Figure 22. North Carolina recreational dolphin mean weight by wave, 1989-2014. ....	25
Figure 23. Number of angler trips in North Carolina by mode in the EEZ, 1989-2014. ....	26
Figure 24. Directed angler trips in North Carolina for dolphin (when primary target) in the EEZ, 1989-2014. ....	27
Figure 25. Directed angler trips by mode in EEZ when dolphin were found in catch (A+B1), 1989-2014. ....	28
Figure 26. North Carolina recreational yellowfin tuna landings along with dolphin landings (lbs), 1989-2014. ....	29
Figure 27. North Carolina Number of Dolphin Caught at Size by Mode, 2014. ....	30
Figure 28. Delaware Number of Fish Caught at Size, 2014. ....	30
Figure 29. East Florida Number of Fish Caught at Size, 2014. ....	30
Figure 30. Georgia Number of Fish Caught at Size, 2014. ....	31
Figure 31. Maryland Number of Fish Caught at Size, 2014. ....	31
Figure 32. Massachusetts Number of Fish Caught at Size, 2014. ....	31
Figure 33. New Jersey Number of Fish Caught at Size, 2014. ....	32
Figure 34. New York Number of Fish Caught at Size, 2014. ....	32
Figure 35. North Carolina Number of Fish Caught at Size, 2014. ....	33
Figure 36. Virginia Number of Fish Caught at Size, 2014. ....	33
Figure 37. Number of dolphin caught in North Carolina at size (inches), 2004-2007. ....	35
Figure 38. Number of dolphin caught in North Carolina at size (inches), 2008-2011. ....	36

**Table 1. North Carolina recreational dolphin catch (number of fish) by catch type, 1989-2014.**

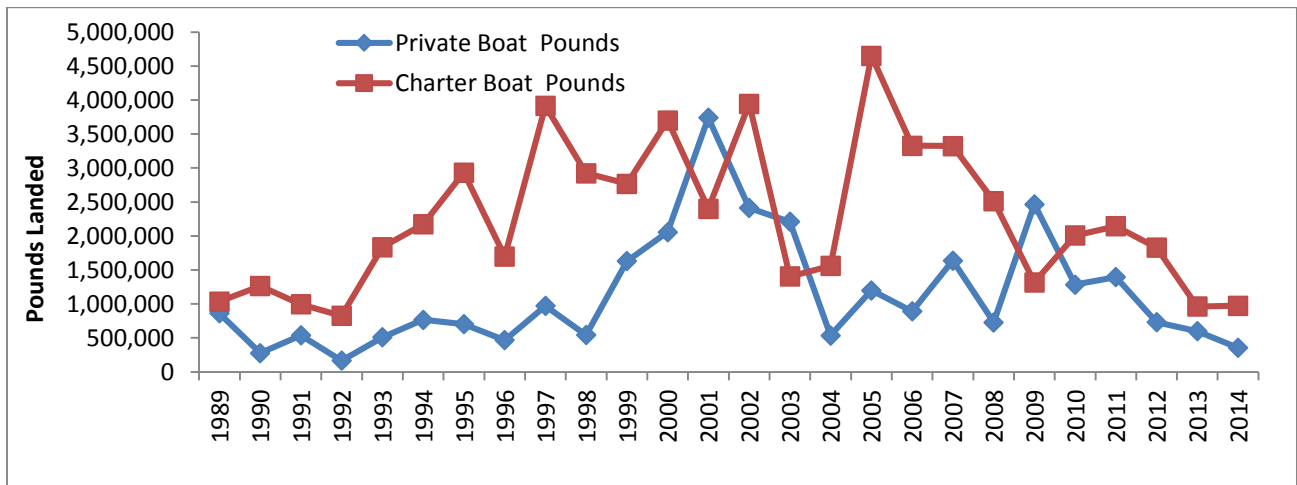
Year	Observed Harvest (A)	Reported Harvest (B1)	Total Harvest (A+B1)	Released Alive (B2)	Total Catch (A+B1+B2)
1989	236,028	15,932	251,960	1,381	253,341
1990	314,393	9,968	324,361	2,607	326,968
1991	267,714	19,979	287,693	8,347	296,040
1992	191,639	179	191,819	9,133	200,952
1993	432,462	3,286	435,749	4,617	440,366
1994	440,853	3,582	444,435	15,340	459,775
1995	501,072	7,580	508,652	13,942	522,594
1996	334,567	1,463	336,031	2,411	338,442
1997	536,201	6,330	542,531	7,506	550,037
1998	422,151	40,196	462,347	10,404	472,751
1999	527,388	33,861	561,249	10,633	571,882
2000	627,812	55,416	683,228	16,485	699,713
2001	462,799	29,496	492,295	4,373	496,668
2002	585,155	35,637	620,792	3,730	624,522
2003	305,954	28,819	334,773	13,835	348,608
2004	238,299	29,148	267,447	5,011	272,458
2005	657,304	5,279	662,583	2,185	664,768
2006	509,434	12,601	522,035	24,989	547,024
2007	530,971	2,123	533,094	4,674	537,768
2008	348,009	9,550	357,559	2,035	359,594
2009	324,785	42,566	367,351	2,731	370,082
2010	414,977	83,650	498,626	4,604	503,230
2011	416,598	55,576	472,174	8,336	480,510
2012	281,444	45,672	327,116	2,553	329,669
2013	160,153	52,235	212,388	2,986	215,374
2014	166,424	18,652	185,077	3,713	188,790



**Figure 1. North Carolina recreational dolphin catch (total number of fish including releases), 1989-2014.**

**Table 2. North Carolina recreational dolphin catch (pounds of fish) by mode and %, 1989-2014.**

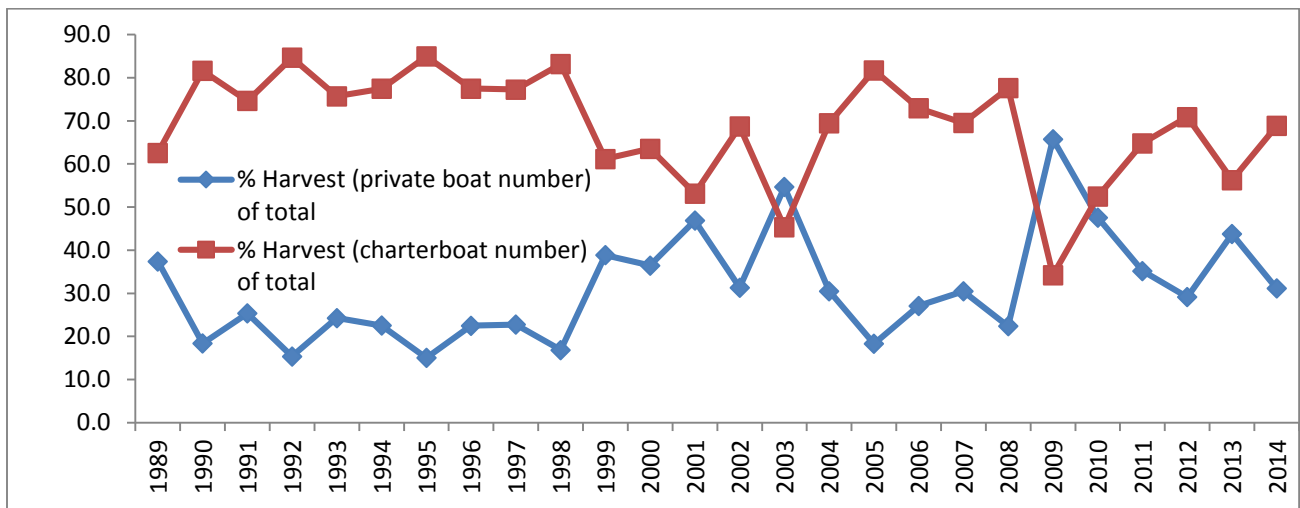
Year	Harvest (A+B1) Total	Private Boat Pounds	% Private Boat Pounds of Total	Charter Boat Pounds	% Charter Boat Pounds of Total
1989	1,898,645	864,292	45.5	1,034,353	54.5
1990	1,553,099	278,312	17.9	1,262,823	81.3
1991	1,535,740	539,720	35.1	996,020	64.9
1992	997,263	166,106	16.7	826,590	82.9
1993	2,348,074	511,509	21.8	1,834,781	78.1
1994	2,939,586	766,741	26.1	2,172,845	73.9
1995	3,638,182	703,907	19.3	2,931,960	80.6
1996	2,168,492	468,290	21.6	1,700,202	78.4
1997	4,886,058	972,069	19.9	3,913,989	80.1
1998	3,466,778	543,308	15.7	2,923,470	84.3
1999	4,397,881	1,630,151	37.1	2,767,730	62.9
2000	5,757,355	2,057,962	35.7	3,699,394	64.3
2001	6,141,217	3,739,750	60.9	2,401,467	39.1
2002	6,355,916	2,411,695	37.9	3,944,221	62.1
2003	3,615,078	2,210,048	61.1	1,405,030	38.9
2004	2,094,799	535,208	25.5	1,559,591	74.5
2005	5,850,339	1,199,940	20.5	4,650,399	79.5
2006	4,220,526	892,008	21.1	3,328,518	78.9
2007	4,960,343	1,637,176	33.0	3,323,166	67.0
2008	3,242,714	730,245	22.5	2,512,469	77.5
2009	3,784,128	2,465,543	65.2	1,318,585	34.8
2010	3,291,521	1,284,441	39.0	2,007,080	61.0
2011	3,538,922	1,395,063	39.4	2,143,860	60.6
2012	2,559,382	731,227	28.6	1,828,156	71.4
2013	1,562,755	600,976	38.5	961,779	61.5
2014	1,329,353	355,296	26.7	974,056	73.3



**Figure 2. North Carolina recreational dolphin catch (pounds of fish) by mode, 1989-2014.**

**Table 3. North Carolina recreational dolphin catch (number of fish landed) by mode and %, 1989-2014.**

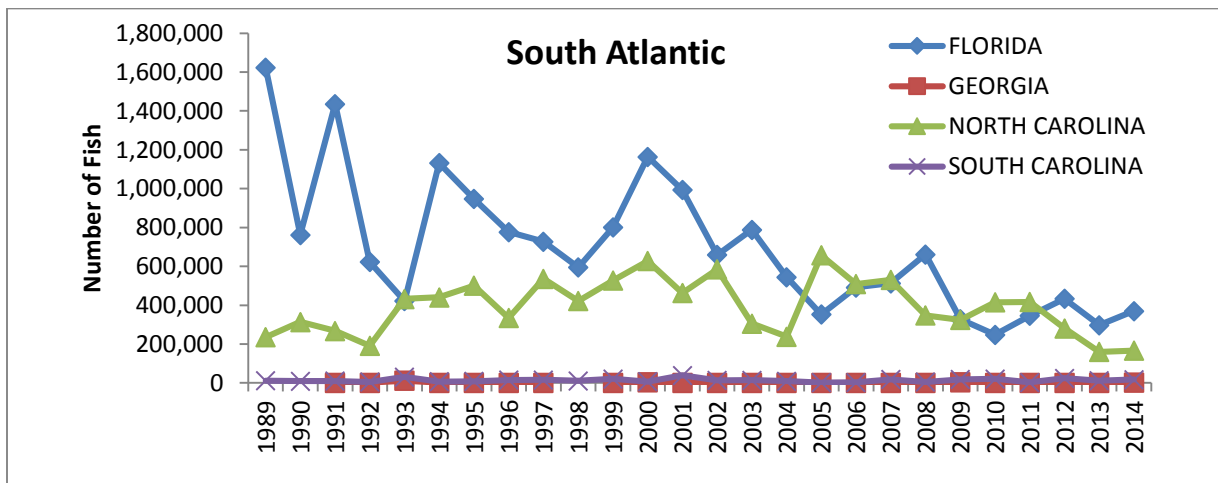
Year	Total Harvest (A+B1, number) Private Boat	% Harvest (private boat number) of total	Total Harvest (A+B1, number) Charterboat	% Harvest (charterboat number) of total	Total Harvest (number of fish)
1989	94,264	37.4	157,696	62.6	251,960
1990	59,091	18.4	262,465	81.6	321,556
1991	72,948	25.4	214,745	74.6	287,693
1992	29,383	15.4	161,922	84.6	191,305
1993	105,555	24.3	328,844	75.7	434,399
1994	100,167	22.5	344,268	77.5	444,435
1995	76,329	15.1	430,573	84.9	506,902
1996	75,650	22.5	260,381	77.5	336,031
1997	123,437	22.8	419,094	77.2	542,531
1998	77,881	16.8	384,466	83.2	462,347
1999	218,074	38.9	343,175	61.1	561,249
2000	249,068	36.5	434,160	63.5	683,228
2001	230,712	46.9	261,583	53.1	492,295
2002	194,441	31.3	426,351	68.7	620,792
2003	183,032	54.7	151,741	45.3	334,773
2004	81,635	30.5	185,812	69.5	267,447
2005	121,227	18.3	541,357	81.7	662,584
2006	141,417	27.1	380,618	72.9	522,035
2007	162,509	30.5	370,585	69.5	533,094
2008	80,078	22.4	277,482	77.6	357,560
2009	241,622	65.8	125,729	34.2	367,351
2010	237,220	47.6	261,407	52.4	498,627
2011	166,161	35.2	306,013	64.8	472,174
2012	95,289	29.1	231,826	70.9	327,115
2013	92,915	43.7	119,473	56.3	212,388
2014	57,647	31.1	127,430	68.9	185,077



**Figure 3. North Carolina recreational dolphin catch statistics (percent of catch) by mode, 1989-2014.**

**Table 4. South Atlantic recreational dolphin landings (number of fish) by state, 1989 through 2014.**

Year	Florida	Georgia	North Carolina	South Carolina	South Atlantic
1989	1,425,511		236,028	12,146	1,673,685
1990	292,281		314,393	9,134	615,808
1991	380,914	580	267,714	9,978	659,186
1992	427,522	923	191,639	5,139	625,223
1993	239,803	11,420	432,462	30,814	714,499
1994	717,969	781	440,853	6,932	1,166,535
1995	637,055	319	501,072	8,243	1,146,689
1996	482,992	424	334,567	15,194	833,177
1997	419,544	87	536,201	16,273	972,105
1998	365,705		422,151	11,025	798,881
1999	698,650	442	527,388	20,749	1,247,229
2000	937,243	4,327	627,812	7,126	1,576,508
2001	835,973	626	462,799	39,342	1,338,740
2002	508,724	43	585,155	13,099	1,107,021
2003	484,061	843	305,954	14,422	805,280
2004	172,621	432	238,299	9,685	421,037
2005	207,680	225	657,304	1,818	867,027
2006	375,203	278	509,434	2,448	887,363
2007	306,066	924	530,971	18,676	856,637
2008	538,201	80	348,009	5,389	891,679
2009	285,763	4,661	324,785	18,318	633,527
2010	155,157	5	414,977	21,135	591,274
2011	216,680	244	416,598	2,439	635,961
2012	343,246	260	281,444	23,828	648,778
2013	221,518	30	160,153	11,977	393,678
2014	303,466	1,805	166,424	17,924	489,619



**Figure 4. South Atlantic recreational dolphin landings (number of fish) by state, 1989-2014.**

Table 5. South Atlantic recreational dolphin landings (pounds of fish) by state, 1989 through 2014.

Year	FLORIDA		GEORGIA		NORTH CAROLINA		SOUTH CAROLINA	
	Harvest (A+B1)		Harvest (A+B1)		Harvest (A+B1)		Harvest (A+B1)	
	Total	PSE	Total	PSE	Total	PSE	Total	PSE
1989	7,779,448	9.5	0	0	1,898,645	20.5	97,265	55.4
1990	5,717,046	15.7	0	0	1,553,099	17.3	56,999	60.6
1991	9,533,120	9.5	7,992	71.8	1,535,740	11.9	119,176	42.8
1992	4,108,845	9.1	2,808		997,263	12	44,545	35
1993	2,551,423	9.6	120,724	66.4	2,348,074	8.6	343,969	33.4
1994	6,583,804	10.9	3,382	91.4	2,939,586	7.9	92,205	39.8
1995	8,531,897	8.8	1,803	96.2	3,638,182	8	89,488	96.3
1996	5,035,964	11.1	3,338	96.5	2,168,492	10.2	148,289	48.5
1997	5,456,469	10.8	606	100.9	4,886,058	9.4	174,479	38.4
1998	3,652,417	9.4	0	0	3,466,778	9.8	123,472	29.9
1999	5,171,409	7.9	17,196	93.2	4,397,881	9.9	193,630	25.3
2000	6,546,942	8.1	21,752	49.6	5,757,355	9.9	85,715	36.4
2001	6,594,534	9.2	7,272	78.8	6,141,217	11.9	682,429	29.3
2002	4,067,631	8.6	556	100	6,355,916	8.9	192,864	27.2
2003	4,850,585	10.3	9,131	68.8	3,615,078	14.9	165,627	27
2004	4,210,832	24.5	3,548	88.6	2,094,799	15.1	237,435	55.9
2005	2,415,764	12.8	2,334	103.6	5,850,339	20.2	41,514	49.6
2006	3,975,154	12	2,395	46.8	4,220,526	13.6	20,350	63
2007	4,060,148	12.9	3,555	54.9	4,960,343	16.8	410,133	37.6
2008	4,353,173	14.1	757	81.6	3,242,714	16.8	41,555	56.8
2009	2,489,870	13.2	60,599	74.3	3,784,128	14.3	388,369	39
2010	1,612,134	19.4	41	101.5	3,291,521	12.5	1,102,466	56.6
2011	2,539,050	14.8	3,316	74	3,538,922	14.2	38,976	64.7
2012	2,706,452	13.8	3,024	99.3	2,559,382	14.2	466,248	30.3
2013	2,333,511	22.4	147	99.1	1,562,755	14.5	78,629	25.2
2014	2,830,063	19.2	24,011	79.6	1,329,353	13.9	130,823	52.3

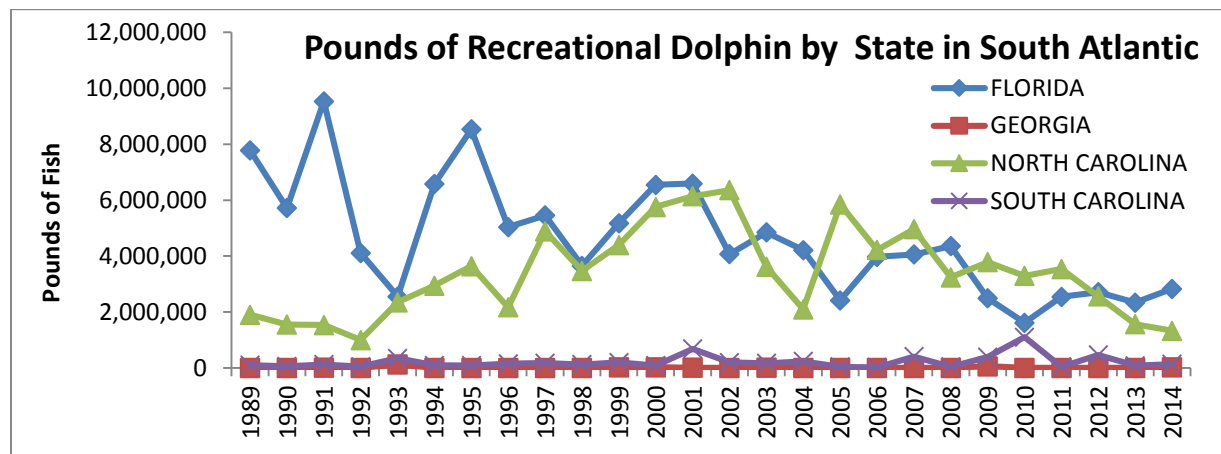
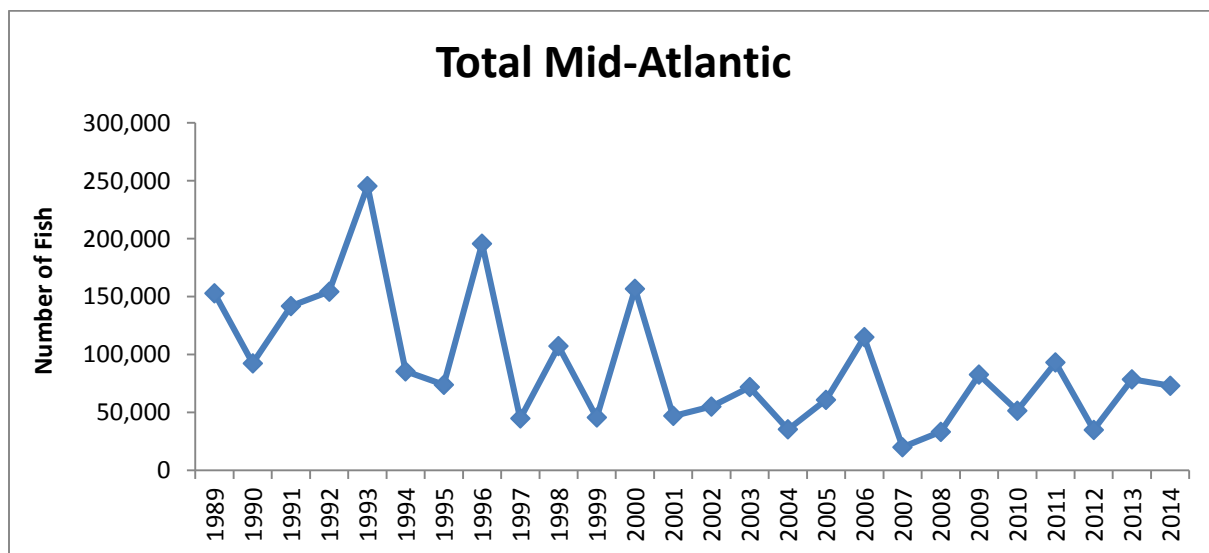


Figure 5. South Atlantic recreational dolphin landings (pounds of fish) by state, 1989 through 2014



**Table 6. Mid-Atlantic dolphin catches (A+B1+B2, number of fish) by state, 1989-2014.**

Year	Delaware	Maryland	New Jersey	New York	Virginia	Total Mid-Atlantic
1989	1,937	27,073	48,855	57,934	17,063	152,862
1990	13,860	5,303	17,836	51,815	3,586	92,400
1991	5,173	59,306	25,693	2,135	49,550	141,857
1992	4,561	40,255	11,509	14,819	83,176	154,320
1993	209	98,316	4,758	21,335	120,922	245,540
1994	6,676	0	21,604	34,705	22,568	85,553
1995	5,698	17,427	11,795	2,801	36,190	73,911
1996	333	23,232	167,542	0	4,678	195,785
1997	249	8,519	2,345	2,796	30,858	44,767
1998	1,062	35,448	12,349	8,024	50,309	107,192
1999	0	12,445	1,262	3,355	28,526	45,588
2000	5,045	2,484	4,813	114,733	29,782	156,857
2001	8,537	4,750	1,923	7,342	24,395	46,947
2002	2,955	16,778	7,749	0	27,628	55,110
2003	1,894	19,631	7,966	41,005	1,294	71,790
2004	1,165	10,483	19,622	1,209	2,904	35,383
2005	24,960	4,005	25,860	896	5,245	60,966
2006	4,715	6,775	46,723	8,906	47,767	114,886
2007	411	2,473	8,549	0	8,533	19,966
2008	4,255	13,497	5,118	0	10,391	33,261
2009	3,725	10,379	31,915	0	36,609	82,628
2010	694	21,285	10,412	2,124	16,971	51,486
2011	94	11,016	1,509	63,991	16,565	93,175
2012	235	6,638	18,928	0	9,149	34,950
2013	1,328	987	64,849	4,140	7,273	78,577
2014	2,632	7,495	49,424	9,430	4,129	73,110



**Figure 6. Mid-Atlantic dolphin catches (number of fish, A+B1+B2) by state, 1989-2014.**

Table 7. Mid-Atlantic dolphin catches (pounds of fish) by state, 1989-2014.

Year	VIRGINIA	NEW YORK	NEW JERSEY	MARYLAND	DELAWARE
1989	73,945	437,878	147,950	125,376	21,124
1990	26,143	146,812	74,204	71,639	30,422
1991	145,729	34,434	210,648	135,345	28,734
1992	415,624	63,694	43,927	158,771	10,186
1993	407,795	209,474	77,521	1,087,638	821
1994	145,021	193,657	24,931	0	29,837
1995	433,066	35,335	158,105	87,726	19,204
1996	13,824	9,370	305,367	146,306	848
1997	131,605	37,850	10,619	54,935	1,408
1998	204,063	35,854	50,732	128,297	8,347
1999	149,190	503,353	9,218	100,215	0
2000	98,533	17,359	29,884	5,142	19,437
2001	80,856	0		32,514	50,875
2002	343,038	203,900	20,021	181,523	29,202
2003	7,029	2,399	16,060	75,496	5,626
2004	20,079	2,469	149,436	108,035	11,313
2005	8,049	49,844	60,350	16,884	87,634
2006	118,195	0	183,234	44,759	49,798
2007	87,403	0	73,708	17,124	3,489
2008	46,766	0	24,279	73,321	22,386
2009	295,977	0	196,184	111,933	33,250
2010	57,756	11,413	72,287	93,317	3,953
2011	74,855	165,621	6,416	44,636	1,101
2012	51,699	0	59,704	28,146	3,185
2013	40,459	39,397	588,319	10,204	8,619
2014	26,973	86,524	403,256	83,289	22,200
Average	134,757	87,948	119,854	116,253	19,346

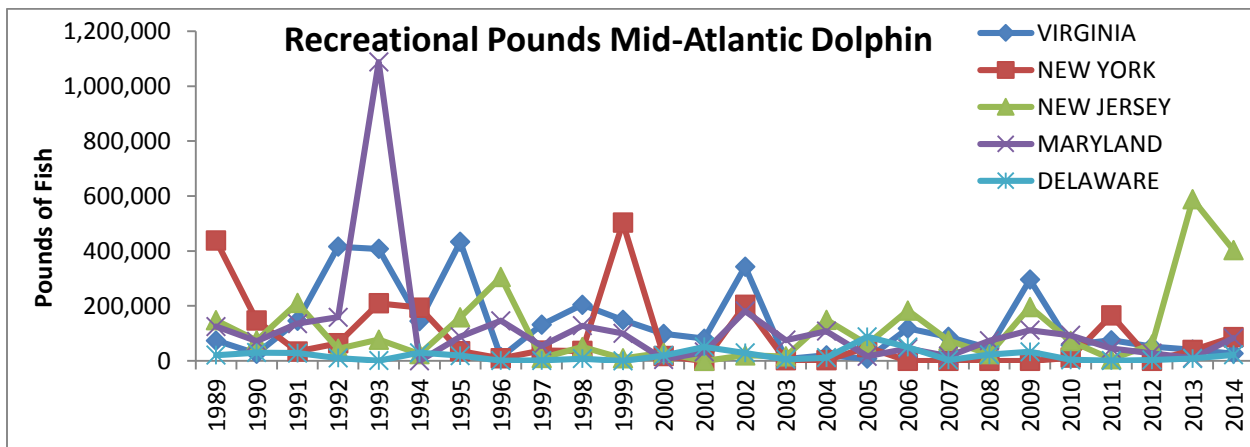
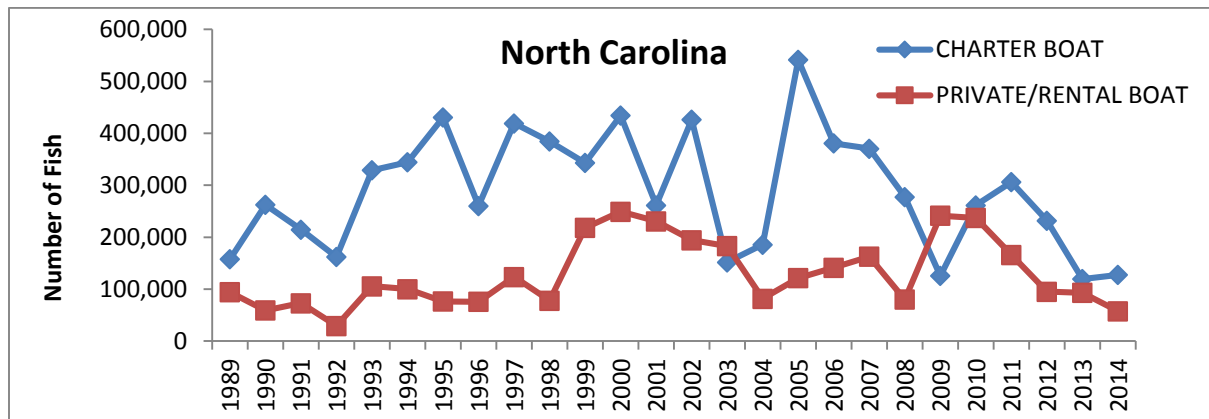


Figure 7. Mid-Atlantic dolphin catches (pounds of fish) by state, 1989-2014.

**Table 8. North Carolina recreational dolphin landings by mode of fishing, 1989-2014.**

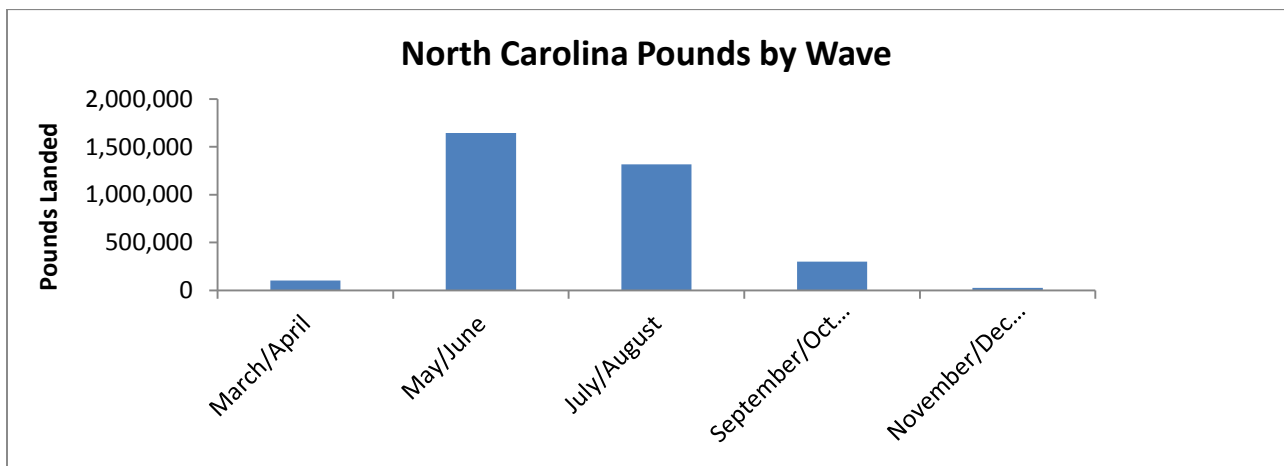
Year	Charter Boat				Private Boat			
	Total Harvest (A+B1, number)	PSE	Harvest (A+B1, pounds) Total	PSE	Total Harvest (A+B1, number)	PSE	Harvest (A+B1, pounds) Total	PSE
1989	157,696	23.6	1,034,353	22.7	94,264	25.1	864,292	36.0
1990	262,465	21.1	1,262,823	20.7	59,091	21.0	278,312	20.8
1991	214,745	15.2	996,020	16.2	72,948	14.6	539,720	16.0
1992	161,922	14.1	826,590	14.1	29,383	15.3	166,106	18.1
1993	328,844	9.8	1,834,781	10.1	105,555	14.2	511,509	15.7
1994	344,268	8.7	2,172,845	9.7	100,167	11.7	766,741	12.9
1995	430,573	8.7	2,931,960	9.3	76,329	13.3	703,907	14.3
1996	260,381	10.5	1,700,202	11.1	75,650	26.9	468,290	24.6
1997	419,094	10.0	3,913,989	10.6	123,437	21.2	972,069	20.9
1998	384,466	9.5	2,923,470	10.0	77,881	28.7	543,308	30.9
1999	343,175	10.1	2,767,730	10.3	218,074	20.4	1,630,151	20.3
2000	434,160	10.5	3,699,394	10.2	249,068	17.8	2,057,962	20.5
2001	261,583	10.9	2,401,467	11.4	230,712	18.0	3,739,750	18.2
2002	426,351	9.3	3,944,221	9.8	194,441	19.5	2,411,695	17.3
2003	151,741	14.1	1,405,030	14.1	183,032	22.3	2,210,048	22.7
2004	185,812	15.2	1,559,591	18.0	81,635	27.9	535,208	27.2
2005	541,357	23.0	4,650,399	24.7	121,227	22.3	1,199,940	22.7
2006	380,618	15.9	3,328,518	16.1	141,417	23.7	892,008	24.1
2007	370,585	20.0	3,323,166	22.9	162,509	19.9	1,637,176	21.3
2008	277,482	16.4	2,512,469	18.8	80,078	32.0	730,245	37.1
2009	125,729	15.7	1,318,585	16.3	241,622	20.0	2,465,543	20.1
2010	261,407	11.6	2,007,080	12.7	237,220	26.6	1,284,441	25.3
2011	306,013	17.8	2,143,860	17.6	166,161	22.2	1,395,063	23.8
2012	231,826	17.3	1,828,156	18.7	95,289	16.4	731,227	16.5
2013	119,473	19.0	961,779	19.6	92,915	24.7	600,976	20.9
2014	127,430	17.5	974,056	17.1	57,647	23.5	355,296	21.9



**Figure 8. North Carolina recreational dolphin landings(number of fish) by mode of fishing, 1989-2014.**

**Table 9. North Carolina recreational dolphin landings (pounds of fish) by wave of fishing, 1989-2014.**

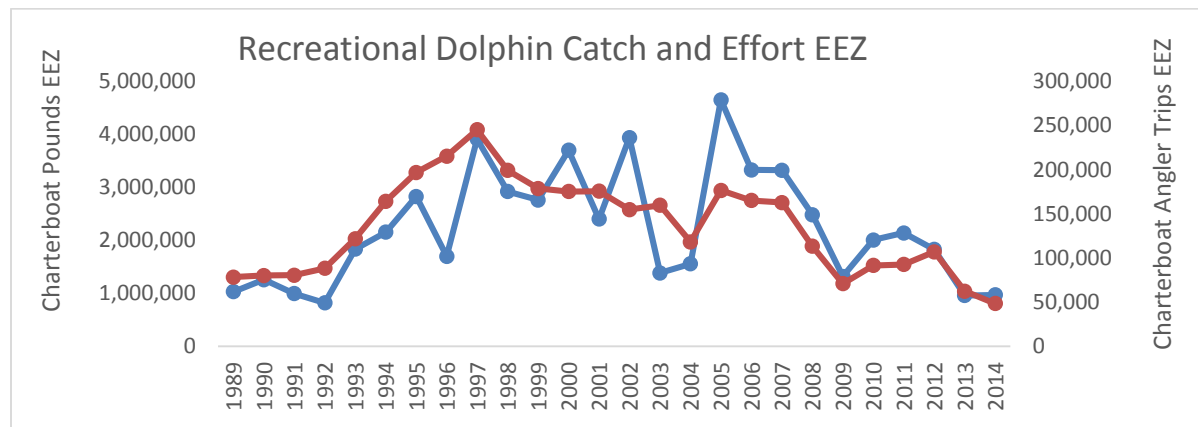
Year	March/April	May/June	July/August	September/October	November/December
1989	40,733	745,275	752,814	59,811	300,012
1990	14,244	531,142	902,248	104,929	536
1991	216,530	655,587	474,637	188,422	564
1992	14,091	322,994	495,602	164,575	0
1993	39,187	1,005,529	1,110,236	190,448	2,674
1994	129,642	1,760,446	720,449	309,199	19,850
1995	153,930	1,849,493	1,212,633	417,518	4,608
1996	47,534	1,268,889	578,743	272,372	954
1997	281,069	2,452,266	1,136,907	1,009,663	6,152
1998	27,625	1,574,394	1,454,592	409,115	1,052
1999	291,070	1,410,105	2,021,416	662,052	13,239
2000	19,904	2,618,220	2,593,584	519,121	6,527
2001	43,543	2,854,090	2,990,295	246,898	6,390
2002	57,607	4,197,255	1,354,371	744,315	2,367
2003	161,523	1,478,857	1,895,058	62,917	16,724
2004	350,943	704,802	932,917	95,155	10,983
2005	119,381	1,681,759	3,712,341	335,883	975
2006	13,850	1,463,859	2,046,937	628,069	67,810
2007	34,762	2,509,523	2,237,996	108,982	69,026
2008	116,322	1,837,679	1,127,466	85,312	75,935
2009	414,256	1,929,266	1,334,744	100,720	5,143
2010	5,934	2,518,186	618,408	140,396	1,324
2011	6,418	1,845,371	1,301,664	383,425	2,045
2012	78,472	1,820,524	385,213	256,558	16,687
2013	5,108	760,796	619,391	175,543	1,676
2014	10,498	957,168	241,270	118,833	1,583
<b>Average</b>	<b>103,622</b>	<b>1,644,364</b>	<b>1,317,382</b>	<b>299,624</b>	<b>24,417</b>



**Figure 9. North Carolina recreational dolphin landings (pounds of fish) by wave, 1989-2014.**

**Table 10. North Carolina recreational charterboat dolphin catch and trips in EEZ, 1989-2014.**

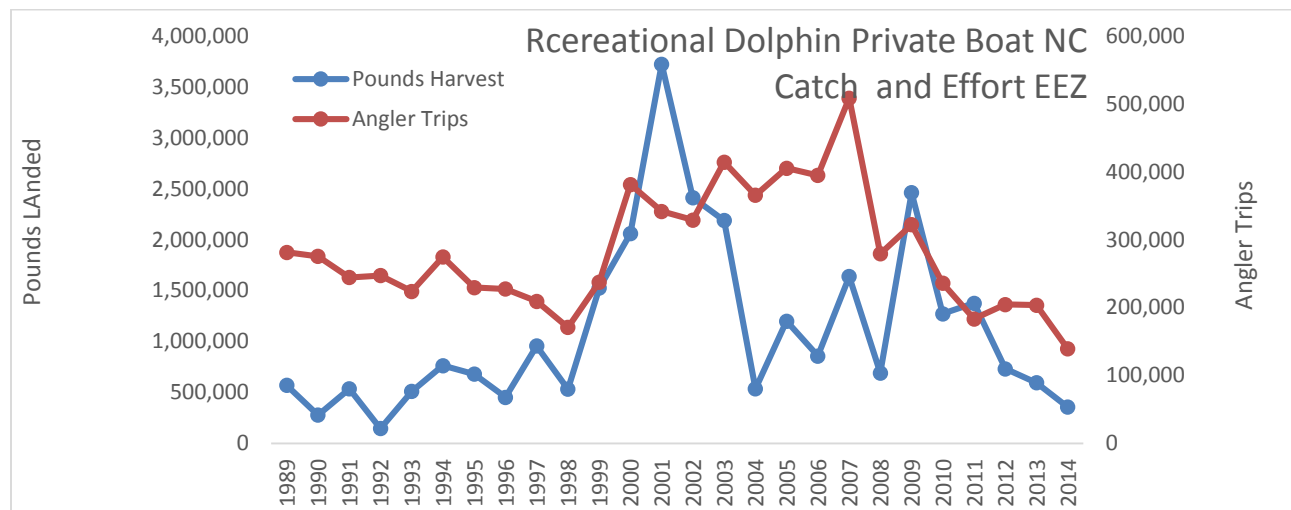
Year	Total Harvest (A+B1, number)	PSE	Harvest (A+B1, pounds) Total	PSE	Angler Trips	PSE
1989	157,696	23.6	1,034,353	22.7	78,439	19.9
1990	261,867	21.2	1,258,789	20.8	80,312	18.1
1991	214,212	15.2	995,441	16.2	80,595	14.0
1992	160,825	14.2	821,787	14.1	88,319	11.8
1993	328,844	9.8	1,834,781	10.1	121,888	8.2
1994	340,644	8.8	2,153,780	9.8	164,173	10.8
1995	415,502	8.9	2,827,745	9.5	196,754	8.0
1996	260,381	10.5	1,700,202	11.1	215,328	9.2
1997	418,633	10.0	3,909,936	10.6	245,078	9.5
1998	384,010	9.5	2,921,657	10.0	199,211	8.0
1999	341,273	10.1	2,761,132	10.3	178,761	8.4
2000	434,160	10.5	3,699,394	10.2	175,221	8.6
2001	261,583	10.9	2,401,467	11.4	175,715	8.6
2002	425,794	9.3	3,936,661	9.8	154,767	8.1
2003	149,309	14.2	1,386,086	14.3	159,638	8.4
2004	185,275	15.3	1,557,933	18.0	118,324	8.4
2005	541,357	23.0	4,650,399	24.7	176,523	14.4
2006	380,618	15.9	3,328,518	16.1	165,086	8.3
2007	370,481	20.0	3,322,775	22.9	162,780	8.4
2008	270,293	16.7	2,485,233	19.0	113,324	11.2
2009	125,729	15.7	1,318,585	16.3	71,008	9.7
2010	261,131	11.6	2,006,168	12.7	91,733	7.4
2011	304,260	17.9	2,141,244	17.6	92,705	13.9
2012	231,826	17.3	1,828,156	18.7	106,956	13.0
2013	119,184	19.0	960,624	19.6	62,445	7.8
2014	126,821	17.5	971,619	17.2	48,509	9.0



**Figure 10. North Carolina recreational charterboat dolphin catch and trips in EEZ, 1989-2014.**

**Table 11. North Carolina recreational private boat dolphin catch and trips in EEZ, 1989-2014.**

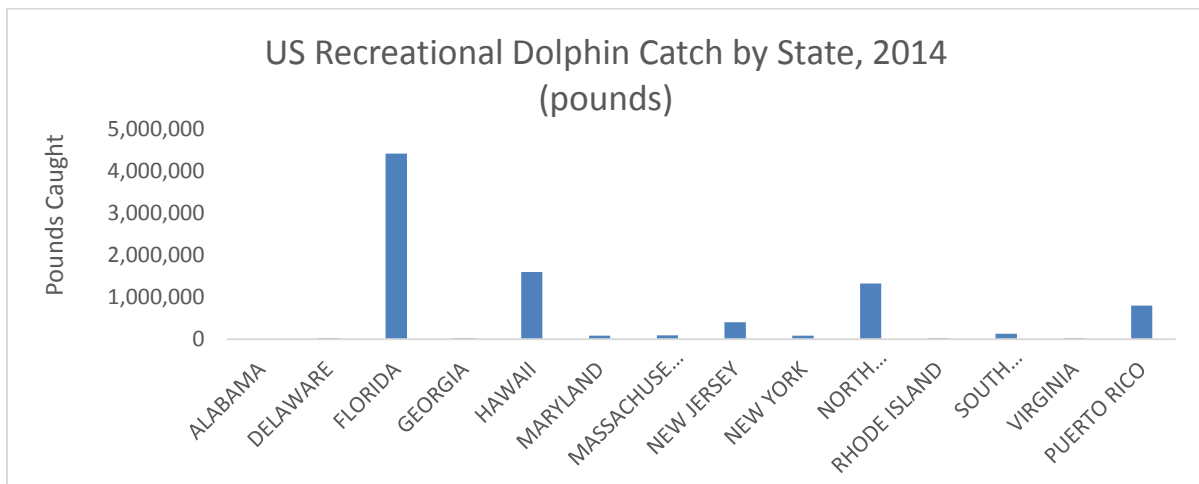
Year	Number Harvest	PSE	Pounds Harvest	PSE	Angler Trips	PSE
1989	66,016	18.1	569,520	22.6	281,085	9.1
1990	58,823	21.1	277,171	20.8	275,357	9.4
1991	71,910	14.8	535,472	16.1	244,126	9.2
1992	24,285	15.7	145,242	18	247,106	5.7
1993	105,237	14.3	510,084	15.7	223,675	6.5
1994	99,336	11.8	762,802	13	274,277	6.2
1995	74,108	13.6	679,249	14.5	229,254	6.1
1996	73,307	27.7	451,793	25.4	227,133	7.3
1997	121,176	21.5	955,847	21.2	209,157	6.9
1998	74,866	29.7	532,014	31.5	170,630	7.4
1999	199,021	20.9	1,524,554	20.8	237,328	7.4
2000	249,068	17.8	2,057,962	20.5	381,071	7.8
2001	228,812	18.1	3,721,720	18.3	341,452	6.6
2002	194,441	19.5	2,411,695	17.3	328,776	6.7
2003	179,746	22.6	2,186,775	22.9	414,101	7.6
2004	81,635	27.9	535,208	27.2	365,191	12
2005	121,227	22.3	1,199,940	22.7	404,952	10.3
2006	139,340	24	856,939	24.8	394,342	10
2007	162,509	19.9	1,637,176	21.3	508,257	9.4
2008	76,634	33.3	690,639	39.1	278,995	11.8
2009	241,075	20	2,459,563	20.2	321,996	11
2010	234,507	26.9	1,271,614	25.5	235,795	12.9
2011	163,605	22.5	1,375,344	24.1	183,144	12.2
2012	95,289	16.4	731,227	16.5	204,477	10.1
2013	92,185	24.9	595,256	21.1	203,530	13.7
2014	57,647	23.5	355,296	21.9	139,117	12.2



**Figure 11. North Carolina recreational private boat dolphin catch and trips in EEZ, 1989-2014.**

**Table 12. US Recreational Dolphin Catch by State, 2014.**

State	Total Harvest (A+B1, number of fish)	PSE	Harvest (A+B1, pounds of fish)	PSE
ALABAMA	287	54.8	1,661	59.3
DELAWARE	2,632	44.4	22,200	42.6
FLORIDA	693,622	11.8	4,416,985	15.4
GEORGIA	1,805	79.6	24,011	79.6
HAWAII	91,698	13.1	1,599,956	13.9
MARYLAND	7,494	52.8	83,289	59
MASSACHUSETTS	7,865	80.6	94,896	80.6
NEW JERSEY	49,183	35.7	403,256	34.4
NEW YORK	9,430	58.3	86,524	61.4
NORTH CAROLINA	185,077	14.1	1,329,353	13.9
RHODE ISLAND	2,083	94.4	27,719	94.4
SOUTH CAROLINA	17,924	52.5	130,823	52.3
VIRGINIA	3,897	45.1	26,973	49.2
PUERTO RICO	85,186	26.7	803,907	9.6



**Figure 12. US Recreational Dolphin Catch by State, 2014.**

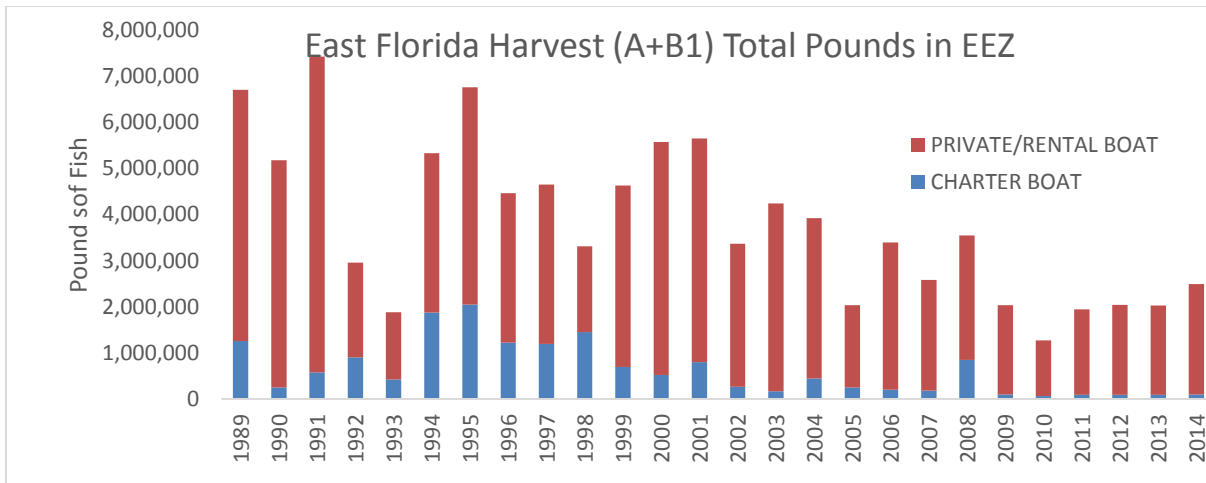


Figure 13. EEZ East Florida Recreational Dolphin Catch, Charterboat and Private Boat, 1989-2014.

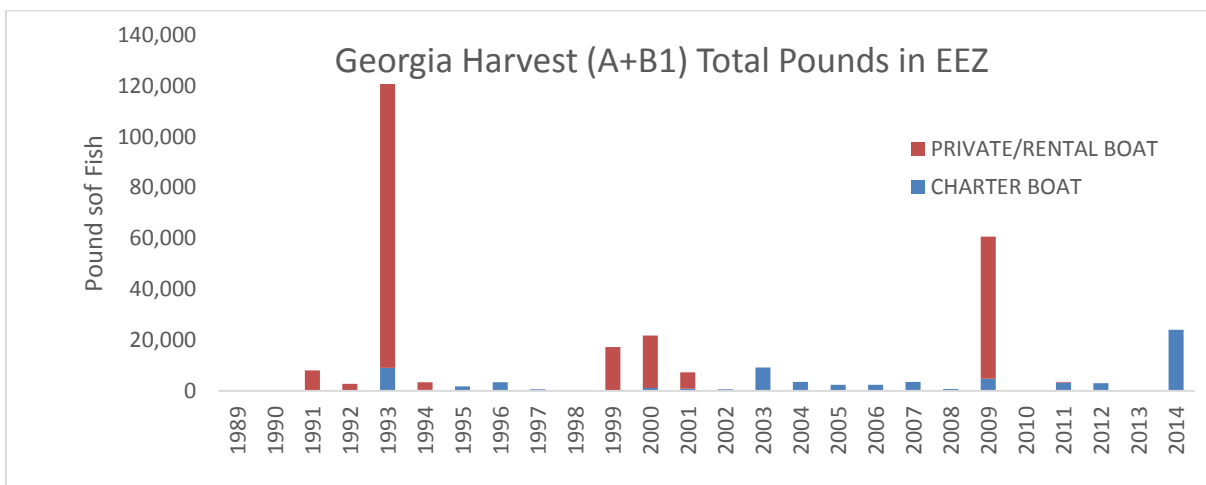


Figure 14. EEZ Georgia Recreational Dolphin Catch, Charterboat and Private Boat, 1989-2014.

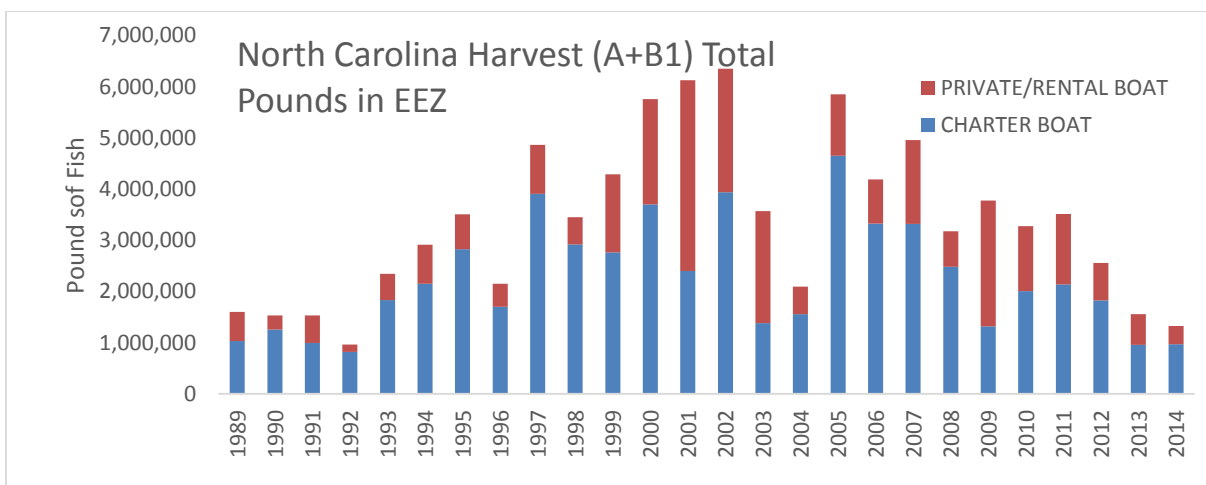


Figure 15. EEZ North Carolina Recreational Dolphin Catch, Charterboat and Private Boat, 1989-2014.



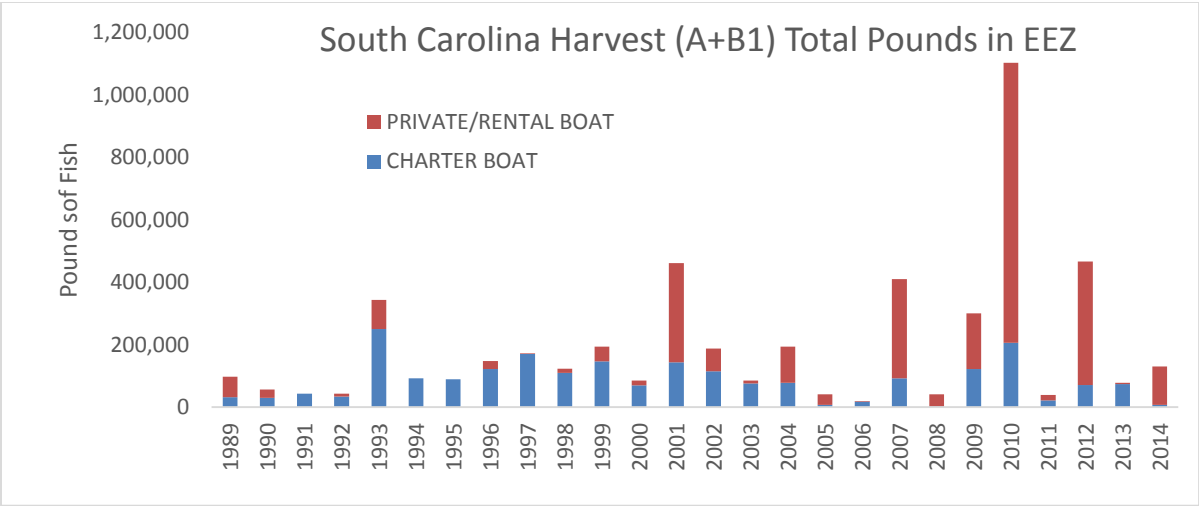
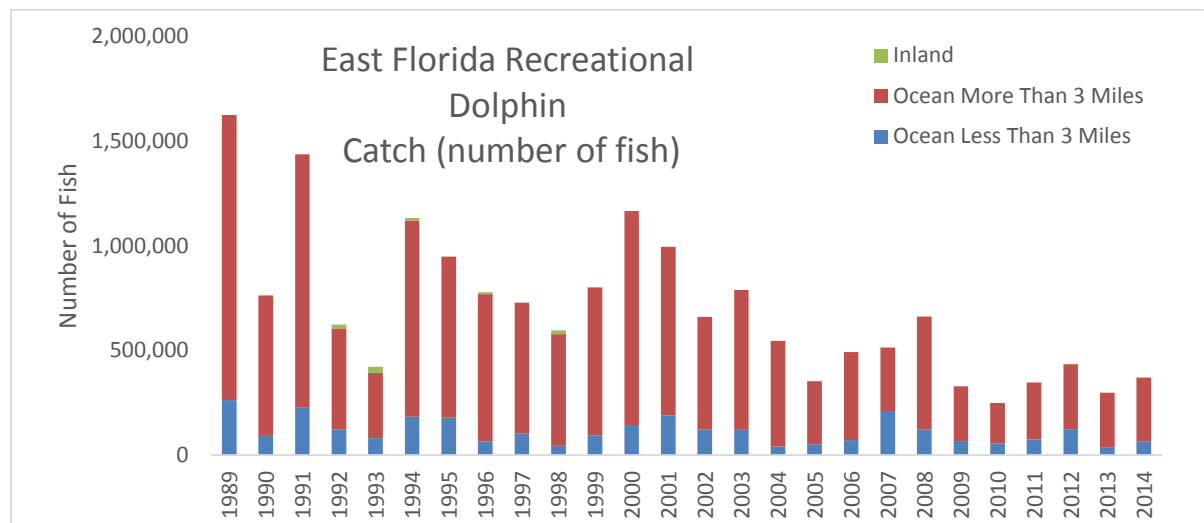


Figure 16. EEZ South Carolina Recreational Dolphin Catch, Charterboat and Private Boat, 1989-2014.

**Table 13. East Florida recreational dolphin catch by area fished, 1989-2014**

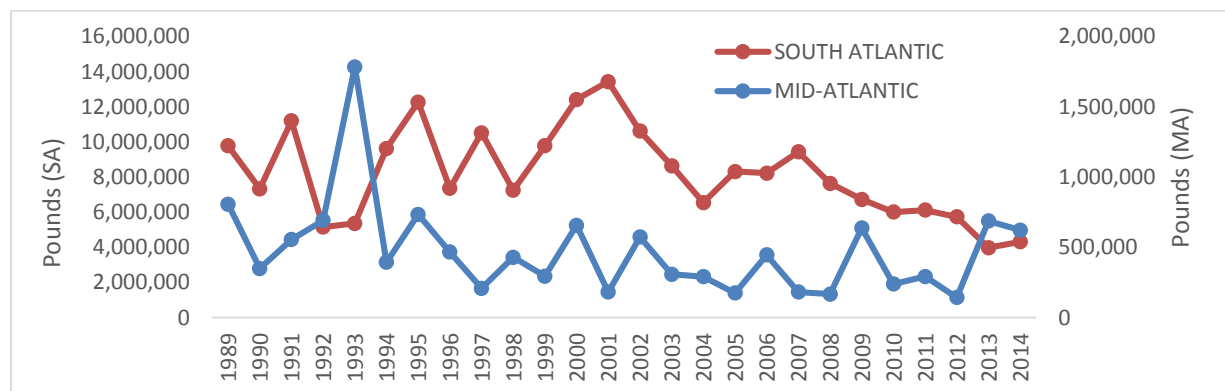
Year	Ocean Less Than 3 Miles		Ocean More Than 3 Miles		Inland	
	Number	PSE	Number	PSE	Number	PSE
1989	261,358	17.6	1,361,173	10.6	0	
1990	95,206	24.3	666,889	14.4	0	
1991	225,696	15.5	1,210,110	8.9	0	
1992	121,385	14.5	482,568	8.7	19,163	44.1
1993	79,901	15.4	311,340	8.9	30,419	38.7
1994	182,394	42.5	936,897	8.3	12,304	41.4
1995	177,423	14.8	769,365	10.5	940	100
1996	65,579	20.8	701,431	10.4	9,973	71.6
1997	101,496	16.4	625,490	10.9	513	100
1998	42,991	21.3	533,056	9.8	19,032	20.8
1999	94,384	15.5	705,476	8.3	1,167	50.5
2000	143,196	16.1	1,021,044	9.6	0	
2001	188,088	14.8	805,223	9.5	0	
2002	121,214	13	537,491	8.9	0	
2003	119,405	22.9	668,583	9.7	0	
2004	40,920	18.8	504,056	28.5	0	
2005	51,625	19.8	300,869	13.8	0	
2006	70,707	22.3	420,866	13.4	0	
2007	204,956	21.6	307,384	13.6	1,099	99.1
2008	121,401	25.3	539,766	15.3	0	
2009	66,251	20.9	261,926	15.8	0	
2010	55,925	27.5	192,210	18.1	0	
2011	73,775	20.3	272,674	17.1	0	
2012	123,369	21.1	310,185	15.7	232	100.6
2013	34,279	37.7	263,273	20.8	0	
2014	63,880	35.6	304,480	17.5	1,414	100.5



**Figure 17. East Florida recreational dolphin catch by area fished, 1989-2014**

**Table 14. Recreational Dolphin Catch (pounds) in Mid-Atlantic and South Atlantic, 1989-2014.**

Year	MID-ATLANTIC				SOUTH ATLANTIC			
	Total Harvest (A+B1, Number)	PSE	Harvest (A+B1, Pounds) Total	PSE	Total Harvest (A+B1, Number)	PSE	Harvest (A+B1, Pounds) Total	PSE
1989	141,871	22.0	806,273	23.7	1,886,637	8.4	9,775,357	8.6
1990	89,658	34.6	349,220	32.1	1,095,590	10.4	7,327,144	12.8
1991	115,165	22.3	554,890	18.0	1,734,057	6.8	11,196,027	8.2
1992	145,761	20.8	692,202	28.6	820,997	6.3	5,153,460	7.6
1993	240,417	22.0	1,783,249	40.2	899,642	5.5	5,364,189	6.5
1994	80,199	21.2	393,446	30.3	1,583,744	7.2	9,618,977	7.9
1995	70,868	25.5	733,436	29.6	1,464,942	6.4	12,261,370	6.6
1996	75,562	54.1	466,345	63.0	1,128,632	7.3	7,356,083	8.2
1997	43,573	54.4	207,938	43.7	1,286,389	6.7	10,517,612	7.1
1998	96,542	24.8	429,288	26.9	1,068,452	6.4	7,242,668	6.7
1999	45,587	30.9	294,477	29.7	1,387,243	6.0	9,780,115	6.2
2000	155,201	76.2	656,349	78.1	1,860,397	6.4	12,411,764	6.3
2001	41,309	23.7	181,604	27.8	1,525,712	6.3	13,425,453	7.3
2002	52,362	21.3	573,784	22.6	1,296,647	5.8	10,616,966	6.3
2003	71,789	34.8	308,111	39.6	1,138,026	7.4	8,640,422	8.5
2004	34,843	30.7	291,261	26.1	839,799	17.8	6,546,614	16.6
2005	55,057	49.4	175,386	47.6	1,018,160	13.2	8,309,951	14.7
2006	106,895	29.9	445,831	23.6	1,016,444	8.9	8,218,424	9.1
2007	19,247	35.2	181,725	33.5	1,078,775	9.4	9,434,178	10.6
2008	27,994	27.4	166,751	30.0	1,025,281	10.0	7,638,199	10.7
2009	75,731	40.6	637,345	39.9	727,628	9.5	6,722,967	9.7
2010	43,106	22.3	238,726	22.6	825,003	10.8	6,006,162	13.5
2011	55,577	48.7	292,629	44.4	823,869	10.0	6,120,264	10.3
2012	34,919	55.2	142,733	47.8	802,316	8.9	5,735,106	9.4
2013	78,576	13.5	686,999	12.3	521,948	12.4	3,975,043	14.4
2014	72,637	26.1	622,243	25.3	574,581	11.2	4,314,250	13.4



**Figure 18. Recreational Dolphin Catch (pounds) in Mid-Atlantic and South Atlantic, 1989-2014.**

Table 15. Recreational Dolphin Catch (pounds) in Caribbean and South Atlantic, 1989-2014.

	CARIBBEAN				SOUTH ATLANTIC			
	Total Harvest (A+B1, Number)	PSE	Harvest (A+B1, Pounds) Total	PSE	Total Harvest (A+B1, Number)	PSE	Harvest (A+B1, Pounds) Total	PSE
1989					1,886,637	8.4	9,775,357	8.6
1990					1,095,590	10.4	7,327,144	12.8
1991					1,734,057	6.8	11,196,027	8.2
1992					820,997	6.3	5,153,460	7.6
1993					899,642	5.5	5,364,189	6.5
1994					1,583,744	7.2	9,618,977	7.9
1995					1,464,942	6.4	12,261,370	6.6
1996					1,128,632	7.3	7,356,083	8.2
1997					1,286,389	6.7	10,517,612	7.1
1998					1,068,452	6.4	7,242,668	6.7
1999					1,387,243	6.0	9,780,115	6.2
2000	187,256	19.1	2,584,960	22.6	1,860,397	6.4	12,411,764	6.3
2001	118,172	23.5	1,639,332	24.0	1,525,712	6.3	13,425,453	7.3
2002	95,011	21.0	1,252,552	22.5	1,296,647	5.8	10,616,966	6.3
2003	151,983	17.6	1,657,820	17.1	1,138,026	7.4	8,640,422	8.5
2004	144,096	21.6	1,338,779	22.0	839,799	17.8	6,546,614	16.6
2005	45,355	33.6	431,738	33.6	1,018,160	13.2	8,309,951	14.7
2006	98,432	23.5	1,314,025	24.4	1,016,444	8.9	8,218,424	9.1
2007	87,141	20.7	1,053,621	21.2	1,078,775	9.4	9,434,178	10.6
2008	101,618	20.9	1,140,037	17.6	1,025,281	10.0	7,638,199	10.7
2009	49,070	23.3	766,198	22.3	727,628	9.5	6,722,967	9.7
2010	42,101	22.4	452,064	21.7	825,003	10.8	6,006,162	13.5
2011	78,288	23.6	582,496	22.9	823,869	10.0	6,120,264	10.3
2012	112,295	21.1	772,504	19.1	802,316	8.9	5,735,106	9.4
2013	18,184	33.4	257,744	22.7	521,948	12.4	3,975,043	14.4
2014	85,186	26.7	803,907	9.6	574,581	11.2	4,314,250	13.4

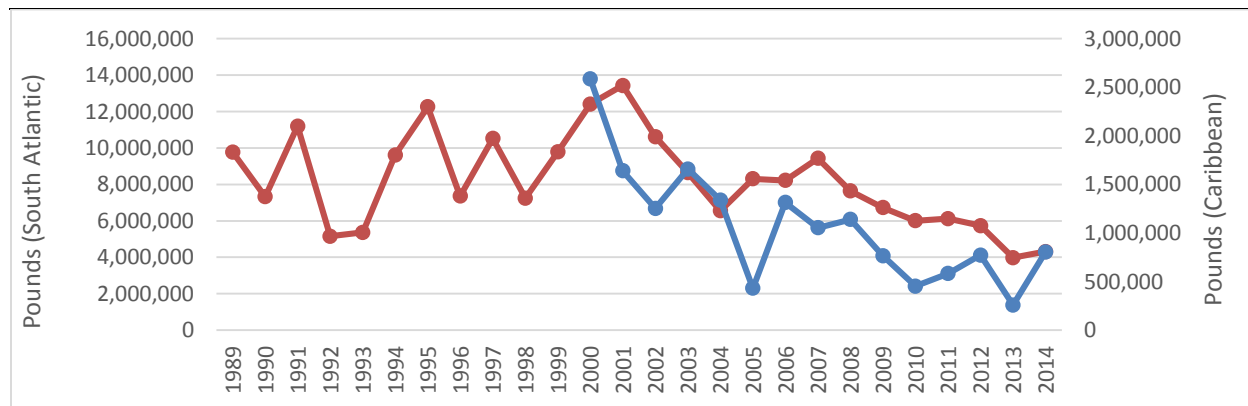


Figure 19. Recreational Dolphin Catch (pounds) in Caribbean and South Atlantic, 1989-2014.

**Table 16. Recreational Dolphin Landings (number of fish) North of Cape Hatteras, 2004-2014.**

Year	Harvest Number (A+B1)	PSE (Num)	Weight (A+B1), lb	PSE (lb)	Released	PSE (REL)	Number Lengths Obtained	Minimum Length, mm	Maximum Lengths, mm	Mean Length, mm	Number of Weights	Minimum Weight, kg	Maximum Weight, kg	Mean Weight, kg
2004	206,204	14.7	1,478,131	11.2	183	100	.	.	.	.	.	.	.	.
2005	532,354	16.1	4,369,106	13.1	2,185	16.4	1700	461	1184	720	1699	0.85	17.75	3.75
2006	420,810	13.1	3,438,052	9.4	10,922	47.7	1564	310	1213	714	1564	0.5	17.75	3.65
2007	427,457	14.3	3,727,654	12.4	3,975	60.2	1573	432	1404	743	1572	0.8	23.5	3.99
2008	251,994	14.4	2,285,881	11.2	935	91.3	1594	311	1404	750	1593	0.7	21	4.21
2009	204,923	17.7	2,179,250	12.6	336	100	1552	438	1193	811	1551	0.7	13.5	4.76
2010	320,383	13.1	2,264,460	10.2	1,301	57.4	1087	403	1725	661	1012	0.6	19.5	2.98
2011	381,390	11.9	2,925,574	9.4	7,338	92.4	1583	298	1296	703	1710	0.25	17.75	3.48
2012	237,939	11.5	1,858,379	8.2	891	55.6	1219	416	1358	724	1434	0.7	24.95	3.38
2013	124,520	19.5	922,355	11.4	1,649	10	350	310	1467	737	354	0.25	17.25	3.71
2014	154,294	15.1	1,114,603	9.2	2,193	15.7	600	307	1314	733	802	0.5	20.5	3.78

**Table 17. Recreational Dolphin Landings (number of fish) South of Cape Hatteras, 2004-2014.**

Year	Harvest Number (A+B1)	PSE (Num)	Weight (A+B1), lb	PSE (lb)	Released	PSE (REL)	Number Lengths Obtained	Minimum Length, mm	Maximum Lengths, mm	Mean Length, mm	Number of Weights	Minimum Weight, kg	Maximum Weight, kg	Mean Weight, kg
2004	61,243	22	616,669	15.8	4,828	42.5	.	.	.	.	.	.	.	.
2005	130,229	25.9	1,481,233	18.2	0	.	134	428	1184	731	130	0.75	12.25	3.99
2006	101,225	24	782,474	17.4	14,067	59.8	95	328	1203	719	86	0.5	12.75	3.73
2007	105,637	20.6	1,232,689	15.2	698	100	89	548	1148	854	86	1.45	12.2	5.56
2008	105,565	21.7	956,833	17.3	1,100	75.4	165	404	1179	751	163	0.6	13.95	4.2
2009	162,427	19.2	1,604,878	12.4	2,395	60	411	392	1290	786	405	0.55	20.9	4.67
2010	178,243	45.5	1,027,060	25	3,303	59.7	445	387	1329	565	431	0.55	15	1.99
2011	90,785	19.8	613,348	13.8	998	57.1	439	359	1117	583	435	0.4	13	2.32
2012	89,176	16.5	701,003	10.5	1,662	47.9	699	380	1232	709	690	0.6	12.1	3.72
2013	87,868	20.1	640,401	13	1,337	55.8	249	299	1122	674	240	0.25	14.25	3.29
2014	30,783	22.2	214,749	18.9	1,520	0	291	365	1091	668	290	0.5	11.2	3.19

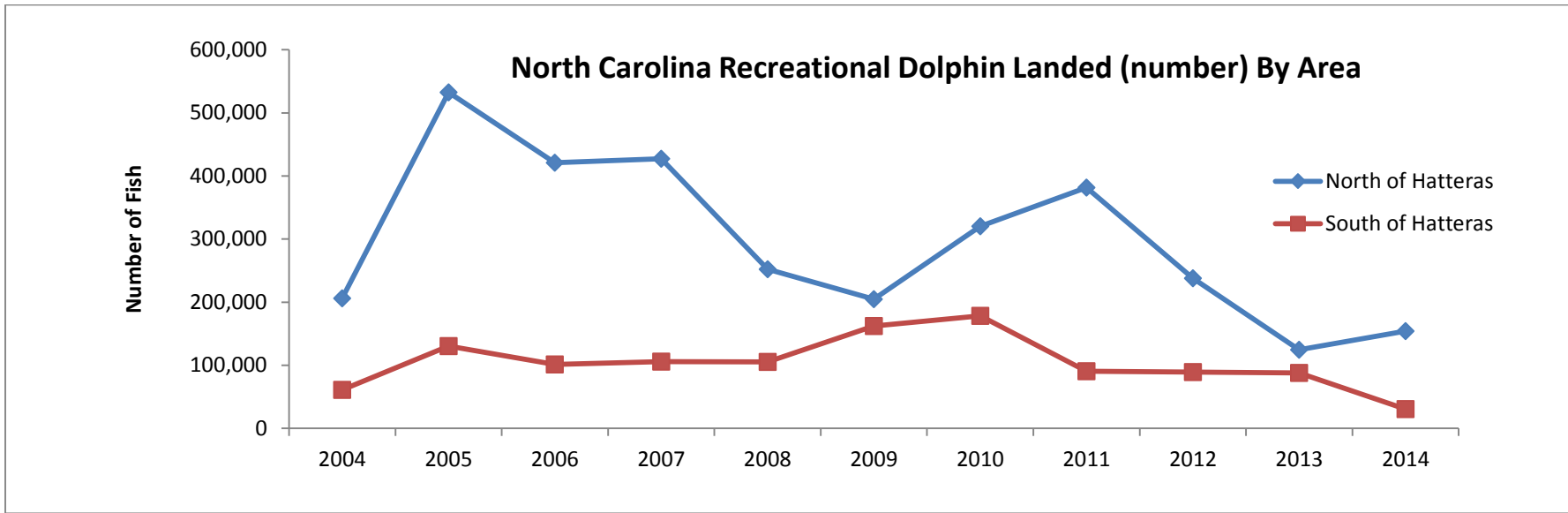


Figure 20. Recreational Dolphin landings (number of fish) north of Cape Hatteras, 2004-2014.

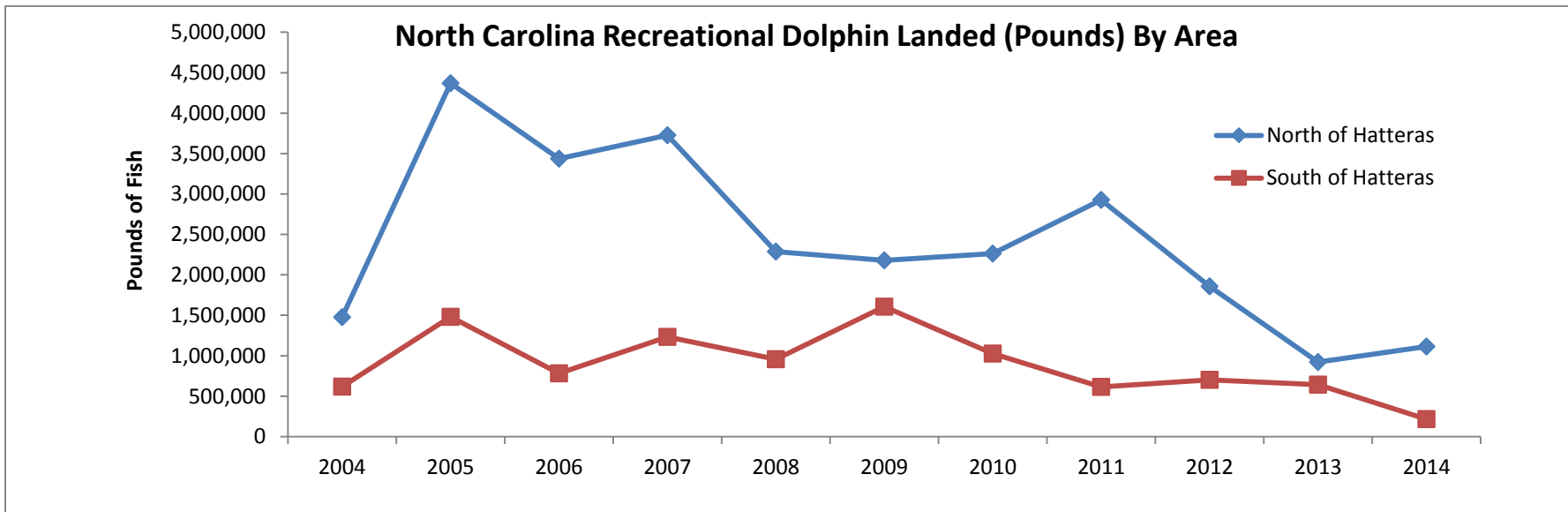


Figure 21. Recreational Dolphin landings (pounds of fish) north of Cape Hatteras, 2004-2014.

Table 18. Frequency distribution of number of fish caught per successful angler trip. Percent and cumulative percent provided, 1989-1994.

Number of Fish	1989		1990		1991		1992		1993		1994	
	%	Cum.%	%	Cum.%	%	Cum.%	%	Cum.%	%	Cum.%	%	Cum.%
1	31.1	31.1	24.3	24.3	23.6	23.6	34.5	34.5	27.3	27.3	29.5	29.5
2	13.7	44.8	8.2	32.4	15.3	38.9	17.2	51.7	15.4	42.7	11.9	41.3
3	8.0	52.8	6.5	38.9	10.1	49.0	9.4	61.1	7.6	50.4	7.9	49.2
4	5.6	58.5	6.1	45.0	4.9	53.9	4.7	65.8	4.9	55.3	7.0	56.2
5	6.0	64.5	5.0	50.0	5.5	59.4	3.1	68.9	3.2	58.5	8.1	64.3
6	5.5	70.0	3.4	53.4	3.8	63.1	2.9	71.8	2.6	61.1	6.0	70.3
7	4.4	74.4	5.3	58.7	2.4	65.5	3.0	74.9	3.1	64.2	5.3	75.5
8	3.7	78.1	5.5	64.2	3.0	68.6	2.5	77.4	8.2	72.4	5.6	81.1
9	3.5	81.6	5.6	69.8	4.0	72.5	3.8	81.1	4.7	77.1	3.6	84.8
10	3.6	85.2	4.1	74.0	16.5	89.1	9.3	90.4	11.4	88.5	8.2	93.0
11	4.9	90.1	3.3	77.3	2.6	91.6	3.0	93.5	1.1	89.5	1.1	94.1
12	2.0	92.2	6.4	83.7	3.9	95.5	3.4	96.9	5.0	94.5	3.0	97.1
13	2.1	94.3	4.0	87.7	0.6	96.1	0.8	97.7	0.8	95.3	0.8	97.9
14	1.2	95.6	1.9	89.6	0.4	96.5	0.5	98.2	0.6	95.9	0.3	98.2
15	0.8	96.4	1.6	91.2	2.3	98.8	0.9	99.1	2.6	98.5	1.3	99.6
16	1.3	97.7	2.0	93.1	0.5	99.3	0.3	99.4	0.0	98.5	0.0	99.6
17	0.6	98.3	1.3	94.4	0.0	99.3	0.0	99.4	0.2	98.8	0.0	99.6
18	0.6	98.9	0.8	95.2	0.0	99.3	0.0	99.4	0.3	99.1	0.0	99.6
19	0.0	98.9	0.8	96.0	0.0	99.3	0.2	99.5	0.5	99.5	0.0	99.6
20	0.3	99.2	0.5	96.5	0.2	99.5	0.4	99.9	0.2	99.8	0.0	99.6

Table 19. Frequency distribution of number of fish caught per successful angler trip. Percent and cumulative percent provided, 1995-2000.

Number of Fish	1995		1996		1997		1998		1999		2000	
	%	Cum.%	%	Cum.%	%	Cum.%	%	Cum.%	%	Cum.%	%	Cum.%
1	29.5	29.5	37.5	37.5	34.5	34.5	28.7	28.7	30.9	30.9	21.2	21.2
2	17.0	46.5	15.2	52.7	16.2	50.8	14.3	43.0	12.3	43.2	14.0	35.2
3	10.5	57.0	8.0	60.7	9.2	60.0	9.4	52.4	8.0	51.3	7.2	42.5
4	9.4	66.4	3.7	64.4	5.0	64.9	4.6	57.0	6.2	57.5	5.6	48.1
5	6.9	73.3	5.4	69.7	5.6	70.5	5.0	62.0	6.7	64.2	3.8	51.9
6	5.1	78.4	6.5	76.3	5.2	75.7	5.3	67.3	6.1	70.3	5.4	57.4
7	4.4	82.8	5.9	82.1	4.1	79.8	4.7	72.0	5.1	75.4	5.4	62.8
8	3.0	85.8	4.1	86.3	3.6	83.5	3.2	75.2	4.1	79.5	7.0	69.8
9	2.3	88.1	1.9	88.2	3.3	86.8	3.0	78.2	2.9	82.4	5.4	75.3
10	6.8	94.9	5.6	93.9	7.3	94.1	10.6	88.8	8.9	91.3	14.8	90.1
11	1.0	95.9	1.2	95.0	0.5	94.5	1.7	90.5	0.8	92.1	1.7	91.9
12	2.3	98.2	2.8	97.8	2.7	97.3	5.3	95.8	3.5	95.6	3.9	95.8
13	0.4	98.5	0.3	98.1	0.1	97.4	0.6	96.4	0.3	95.9	1.1	96.9
14	0.5	99.0	0.2	98.3	0.1	97.5	0.5	96.9	0.4	96.3	0.3	97.2
15	0.6	99.6	1.2	99.5	1.2	98.7	2.1	99.0	2.6	98.9	1.9	99.1
16	0.2	99.8	0.0	99.5	0.3	99.0	0.0	99.0	0.0	98.9	0.0	99.1
17	0.1	99.9	0.1	99.5	0.1	99.1	0.2	99.2	0.0	98.9	0.0	99.1
18	0.0	99.9	0.1	99.6	0.2	99.3	0.0	99.2	0.0	98.9	0.0	99.1
19	0.0	99.9	0.1	99.7	0.2	99.5	0.0	99.2	0.0	98.9	0.0	99.1
20	0.0	99.9	0.3	100.0	0.2	99.7	0.7	99.9	0.7	99.6	0.9	100.0



Table 20. Frequency distribution of number of fish caught per successful angler trip. Percent and cumulative percent provided, 2001-2006.

Number of Fish	2001		2002		2003		2004		2005		2006	
	%	Cum.%	%	Cum.%	%	Cum.%	%	Cum.%	%	Cum.%	%	Cum.%
1	38.3	38.3	25.7	25.7	46.1	46.1	45.4	45.4	30.9	30.9	32.8	32.8
2	17.1	55.4	14.6	40.4	13.9	60.0	17.5	62.9	14.5	45.3	14.7	47.5
3	7.9	63.3	10.1	50.5	7.5	67.5	8.5	71.4	8.1	53.5	12.5	60.0
4	5.0	68.3	7.2	57.7	4.5	72.0	6.5	77.9	4.6	58.1	5.9	66.0
5	5.3	73.6	6.6	64.2	3.1	75.1	2.0	79.9	4.1	62.2	4.3	70.2
6	4.2	77.8	5.9	70.2	5.4	80.4	2.1	82.0	6.4	68.6	4.4	74.6
7	3.2	81.0	5.7	75.9	2.5	82.9	1.3	83.3	5.1	73.7	4.7	79.3
8	2.7	83.7	5.2	81.0	3.7	86.7	2.1	85.4	3.5	77.2	2.6	81.9
9	4.3	88.0	4.8	85.9	3.1	89.8	2.6	88.0	2.0	79.2	3.4	85.3
10	8.9	96.9	8.9	94.8	5.2	95.0	6.3	94.3	16.6	95.8	10.9	96.3
11	0.7	97.5	1.2	96.1	1.1	96.1	0.6	94.9	0.8	96.5	0.4	96.7
12	1.3	98.8	1.8	97.9	2.0	98.1	2.0	96.9	1.8	98.4	0.8	97.4
13	0.0	98.8	0.4	98.3	1.1	99.3	0.1	97.0	0.5	98.8	0.7	98.1
14	0.1	99.0	0.2	98.5	0.5	99.8	0.3	97.3	0.4	99.2	0.4	98.5
15	0.6	99.5	1.1	99.6	0.0	99.8	2.4	99.7	0.8	100.0	1.1	99.5
16	0.0	99.5	0.1	99.7	0.0	99.8	0.0	99.7	0.0	100.0	0.3	99.8
17	0.0	99.5	0.1	99.8	0.0	99.8	0.0	99.7	0.0	100.0	0.2	100.0
18	0.0	99.5	0.0	99.8	0.0	99.8	0.0	99.7	0.0	100.0	0.0	100.0
19	0.0	99.5	0.1	99.9	0.0	99.8	0.0	99.7	0.0	100.0	0.0	100.0
20	0.2	99.7	0.0	99.9	0.0	99.8	0.3	100.0	0.0	100.0	0.0	100.0

Table 21. Frequency distribution of number of fish caught per successful angler trip. Percent and cumulative percent provided, 2007-2012.

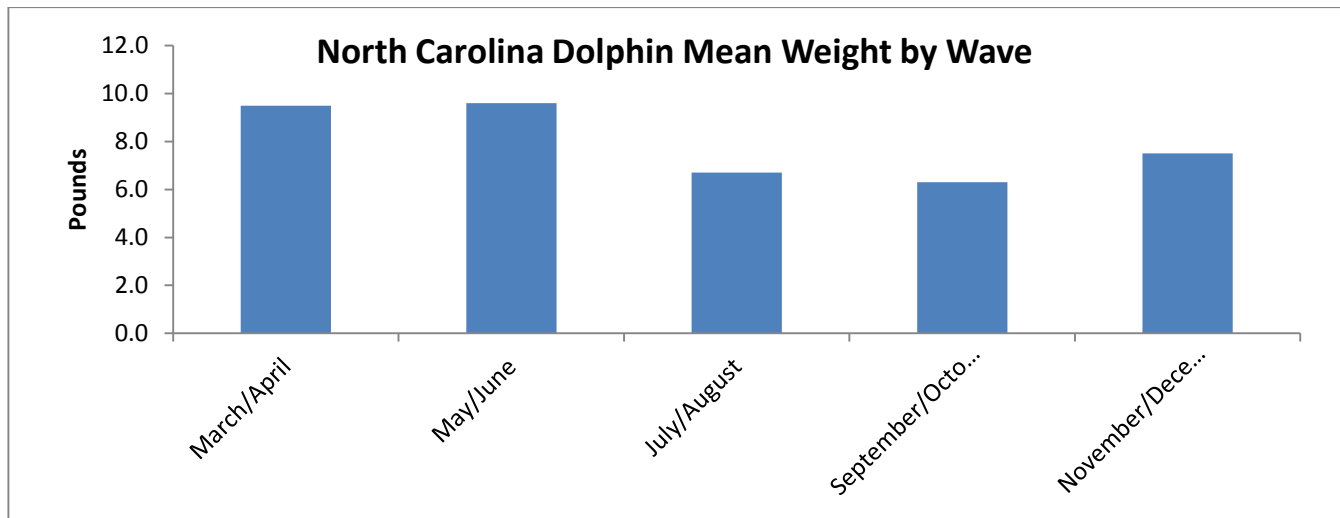
Number of Fish	2007		2008		2009		2010		2011		2012	
	%	Cum.%	%	Cum.%	%	Cum.%	%	Cum.%	%	Cum.%	%	Cum.%
1	32.0	32.0	32.8	32.8	36.6	36.6	25.1	25.1	27.9	27.9	32.2	32.2
2	17.4	49.4	17.9	50.7	22.2	58.8	14.6	39.7	13.3	41.2	19.2	51.4
3	11.1	60.5	6.2	56.9	10.7	69.4	8.3	48.0	11.0	52.2	13.4	64.8
4	7.0	67.5	6.1	63.1	8.5	78.0	6.1	54.1	8.4	60.6	7.9	72.7
5	3.7	71.3	5.0	68.1	8.3	86.3	8.2	62.3	5.4	66.0	6.0	78.6
6	5.0	76.2	4.0	72.0	4.2	90.5	5.1	67.3	5.8	71.8	4.5	83.1
7	4.9	81.1	5.2	77.2	2.2	92.7	2.8	70.1	5.9	77.7	2.0	85.1
8	3.2	84.3	5.5	82.7	2.4	95.1	4.6	74.7	4.8	82.4	3.0	88.1
9	4.5	88.8	4.7	87.4	2.1	97.2	4.2	78.9	2.7	85.1	3.4	91.6
10	6.7	95.4	10.5	97.9	2.1	99.3	16.5	95.4	13.2	98.3	7.6	99.1
11	0.6	96.1	0.7	98.6	0.3	99.7	0.7	96.2	0.6	98.9	0.1	99.2
12	1.8	97.9	0.4	99.0	0.2	99.8	1.9	98.1	0.2	99.1	0.3	99.5
13	0.3	98.2	0.1	99.1	0.0	99.8	0.1	98.1	0.2	99.3	0.2	99.8
14	0.2	98.4	0.2	99.3	0.0	99.8	0.6	98.7	0.2	99.6	0.0	99.8
15	0.7	99.1	0.6	99.9	0.0	99.8	0.8	99.5	0.4	100.0	0.0	99.8
16	0.3	99.4	0.0	99.9	0.2	100.0	0.1	99.6	0.0	100.0	0.1	99.8
17	0.0	99.4	0.0	99.9	0.0	100.0	0.2	99.8	0.0	100.0	0.2	100.0
18	0.0	99.4	0.0	99.9	0.0	100.0	0.0	99.8	0.0	100.0	0.0	100.0
19	0.0	99.4	0.0	99.9	0.0	100.0	0.1	99.8	0.0	100.0	0.0	100.0
20	0.4	99.8	0.0	99.9	0.0	100.0	0.2	100.0	0.0	100.0	0.0	100.0

Table 22. Frequency distribution of number of fish caught per successful angler trip. Percent and cumulative percent provided, 2013-2014.

Number of Fish	2013		2014		Grand Total	
	%	Cum%	%	Cum%	%	Cum%
1	42.3	42.3	26.3	26.3	31.1	31.1
2	19.4	61.7	15.5	41.7	15.4	46.4
3	11.1	72.8	12.9	54.6	9.3	55.8
4	4.4	77.1	10.2	64.9	6.3	62.1
5	3.1	80.2	6.3	71.1	5.5	67.6
6	4.1	84.3	5.4	76.6	4.9	72.5
7	2.1	86.4	5.2	81.8	4.2	76.7
8	2.1	88.5	3.5	85.2	4.1	80.7
9	2.1	90.6	4.2	89.4	3.6	84.3
10	6.9	97.5	5.8	95.2	9.2	93.5
11	1.5	99.0	0.7	95.9	1.2	94.7
12	0.1	99.2	1.6	97.5	2.3	97.0
13	0.4	99.6	0.2	97.7	0.6	97.6
14	0.0	99.6	0.3	98.0	0.4	98.0
15	0.0	99.6	1.3	99.4	1.1	99.1
16	0.0	99.6	0.3	99.7	0.2	99.3
17	0.0	99.6	0.3	100.0	0.1	99.4
18	0.0	99.6	0.0	100.0	0.1	99.5
19	0.0	99.6	0.0	100.0	0.1	99.5
20	0.4	100.0	0.0	100.0	0.2	99.7

**Table 23. North Carolina recreational dolphin mean weight by wave, 1989-2014**

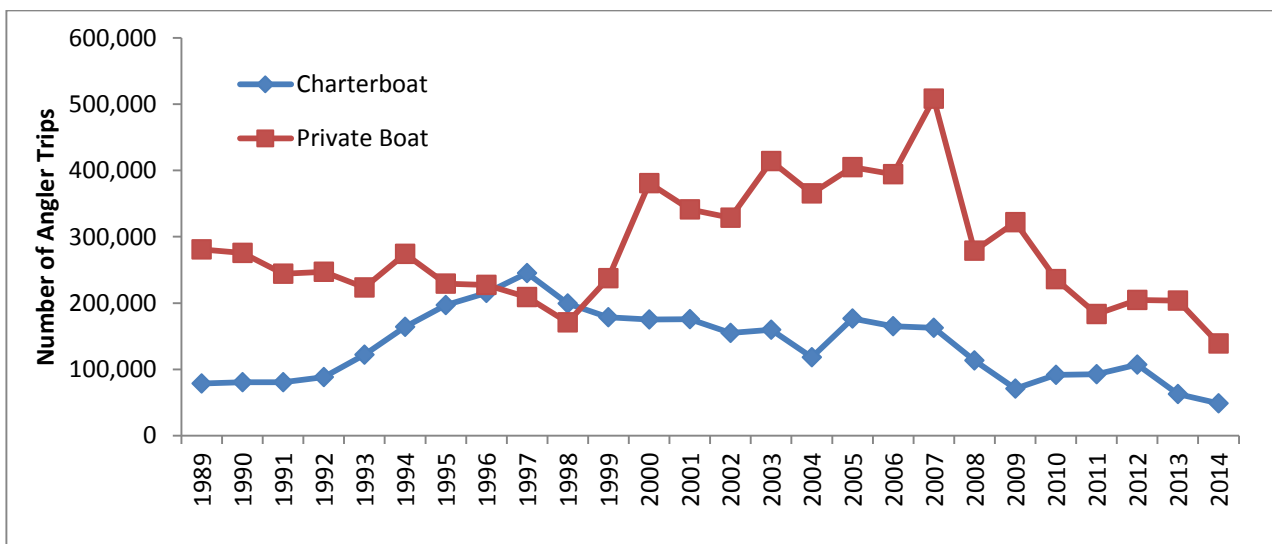
Year	March/April	May/June	July/August	September/ October	November/December
1989	11.2	10.2	5.6	5.2	10.4
1990	8.8	6.3	4.3	4.0	2.7
1991	11.1	6.6	3.8	4.2	7.0
1992	8.5	9.4	4.4	3.7	7.6
1993	8.0	7.8	4.4	3.9	7.0
1994	7.5	8.3	5.2	4.4	3.2
1995	11.5	11.3	5.5	3.7	16.3
1996	13.1	8.1	5.0	4.6	11.7
1997	7.9	10.9	7.2	8.2	8.1
1998	4.8	8.9	6.9	6.0	3.7
1999	8.3	10.1	7.2	6.5	3.3
2000	12.8	11.8	6.7	7.3	11.2
2001	8.2	12.5	12.7	11.3	7.4
2002	10.9	13.9	7.7	5.5	4.4
2003	16.2	10.4	11	7.6	9.4
2004	7.1	10.3	7.1	6.3	4.2
2005	10.2	9.6	8.5	8.8	6.2
2006	10.2	8.6	7.5	9.0	9.6
2007	12.2	11.1	8.1	6.5	6.1
2008	7.3	10.6	8.0	5.8	6.3
2009	9.7	10.5	10.4	8.9	8.9
2010	9.1	7.2	5.2	5.0	9.4
2011	8.6	8.9	6.0	7.9	5.7
2012	10.2	8.6	6.0	6.3	7.5
2013	3.9	10.1	5.6	7.1	11.3
2014	9.7	8.8	4.6	5.3	7.3
Average	9.5	9.6	6.7	6.3	7.5



**Figure 22. North Carolina recreational dolphin mean weight by wave, 1989-2014.**

**Table 24. Number of angler trips in North Carolina by mode in the EEZ, 1989-2014.**

Year	Charterboat	PSE	Private Boat	PSE
1989	78,439	19.9	281,085	9.1
1990	80,312	18.1	275,357	9.4
1991	80,595	14.0	244,126	9.2
1992	88,319	11.8	247,106	5.7
1993	121,888	8.2	223,675	6.5
1994	164,173	10.8	274,277	6.2
1995	196,754	8.0	229,254	6.1
1996	215,328	9.2	227,133	7.3
1997	245,078	9.5	209,157	6.9
1998	199,211	8.0	170,630	7.4
1999	178,761	8.4	237,328	7.4
2000	175,221	8.6	381,071	7.8
2001	175,715	8.6	341,452	6.6
2002	154,767	8.1	328,776	6.7
2003	159,638	8.4	414,101	7.6
2004	118,324	8.4	365,191	12
2005	176,523	14.4	404,952	10.3
2006	165,086	8.3	394,342	10.0
2007	162,780	8.4	508,257	9.4
2008	113,324	11.2	278,995	11.8
2009	71,008	9.7	321,996	11.0
2010	91,733	7.4	235,795	12.9
2011	92,705	13.9	183,144	12.2
2012	106,956	13	204,477	10.1
2013	62,445	7.8	203,530	13.7
2014	48,509	9.0	139,117	12.2



**Figure 23. Number of angler trips in North Carolina by mode in the EEZ, 1989-2014.**

Table 25. Directed angler trips in North Carolina for dolphin (when primary target) in the EEZ, 1989-2014.

Year	Mode of Fishing	
	Charter boat	Private Boat
1989	5,082	7,820
1990	3,694	12,013
1991	3,323	19,204
1992	2,176	8,348
1993	8,154	15,831
1994	5,401	27,487
1995	10,640	25,231
1996	6,696	14,385
1997	4,861	15,830
1998	8,008	13,997
1999	5,798	16,380
2000	6,071	44,387
2001	6,580	28,488
2002	12,347	49,737
2003	5,053	40,165
2004	9,130	22,068
2005	18,403	49,420
2006	19,443	37,187
2007	10,351	53,107
2009	4,364	80,411
2010	16,193	59,798
2011	11,224	42,930
2012	10,862	33,869
2013	6,827	34,583
2014	6,926	29,611

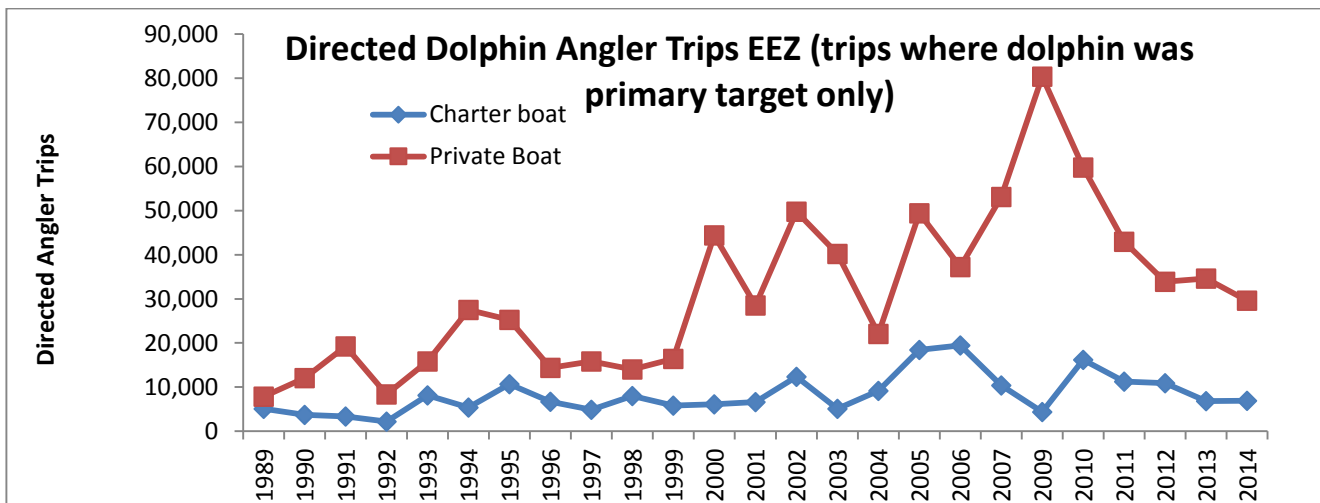
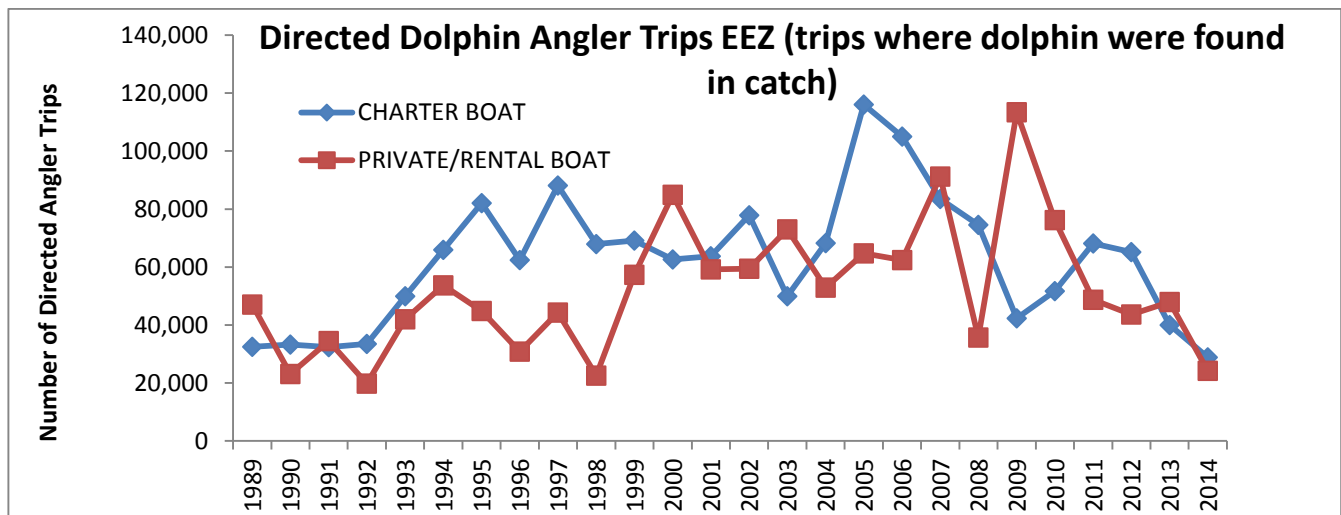


Figure 24. Directed angler trips in North Carolina for dolphin (when primary target) in the EEZ, 1989-2014.

**Table 26. Directed angler trips by mode in EEZ when dolphin were found in catch (A+B1), 1989-2014.**

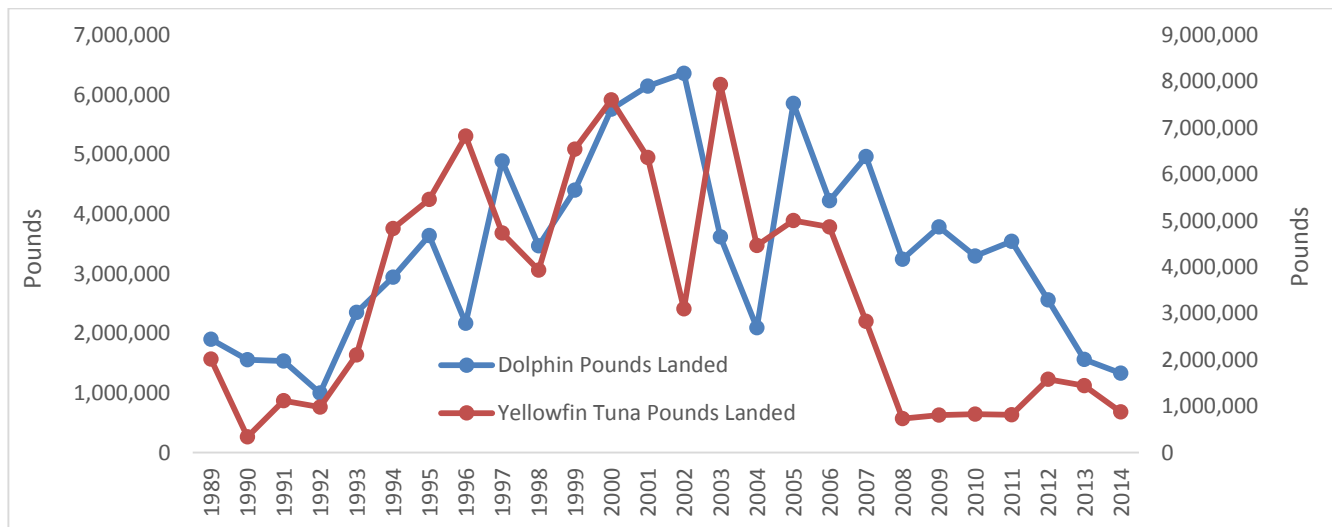
Year	CHARTER BOAT		PRIVATE/RENTAL BOAT	
	Directed Trips	PSE	Directed Trips	PSE
1989	32,469	.	47,083	.
1990	33,236	.	23,172	.
1991	32,389	.	34,477	.
1992	33,515	.	19,822	.
1993	49,900	.	41,992	.
1994	65,968	.	53,748	.
1995	82,032	.	44,821	.
1996	62,419	.	30,826	.
1997	88,163	.	44,301	.
1998	67,879	.	22,581	.
1999	69,129	.	57,369	.
2000	62,632	.	84,881	.
2001	63,764	.	59,200	.
2002	77,902	.	59,434	.
2003	49,966	.	73,023	.
2004	68,242	8.9	52,895	23.5
2005	116,051	10.5	64,732	18.4
2006	105,012	9.6	62,394	23.5
2007	83,518	10.8	91,197	15.9
2008	74,537	10.7	35,677	20.0
2009	42,314	10.5	113,415	16.4
2010	51,744	8.4	76,258	34.0
2011	68,106	7.5	48,690	23.3
2012	65,145	8.5	43,674	18.6
2013	39,996	11.1	47,915	22.1
2014	28,821	12.6	24,245	24.1



**Figure 25. Directed angler trips by mode in EEZ when dolphin were found in catch (A+B1), 1989-2014.**

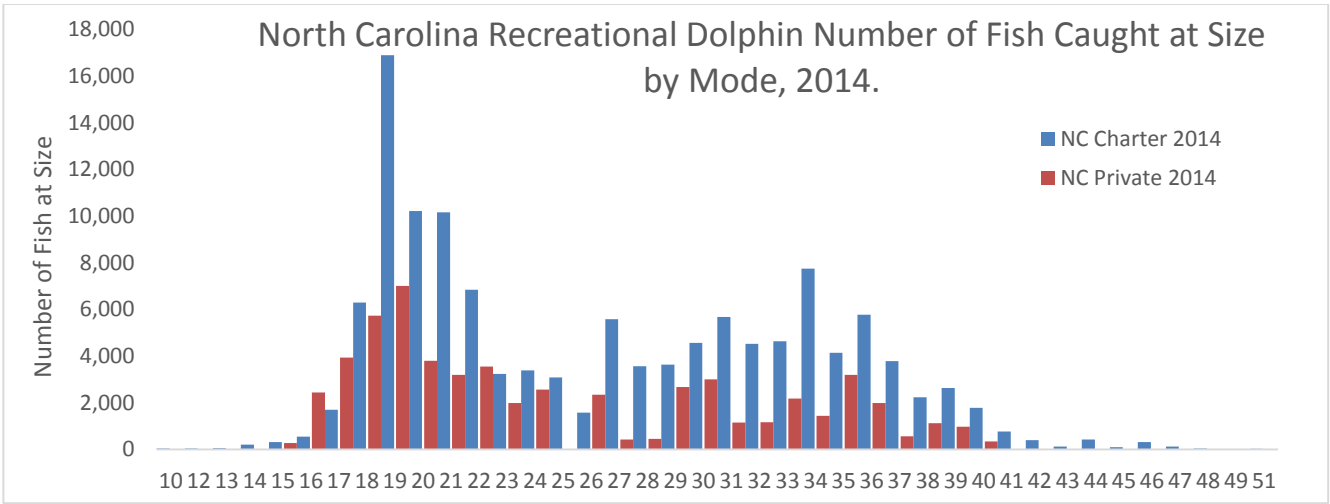
**Table 27. North Carolina recreational yellowfin tuna landings along with dolphin landings (pounds), 1989-2014.**

Year	Dolphin Pounds Landed	PSE	Yellowfin Tuna Pounds Landed	PSE
1989	1,898,645	20.5	2,016,093	17.0
1990	1,553,099	17.3	339,088	24.2
1991	1,535,740	11.9	1,117,057	15.7
1992	997,263	12.0	982,050	14.3
1993	2,348,074	8.6	2,103,526	8.9
1994	2,939,586	7.9	4,830,461	12.9
1995	3,638,182	8.0	5,458,873	14.2
1996	2,168,492	10.2	6,821,542	9.6
1997	4,886,058	9.4	4,731,501	10.0
1998	3,466,778	9.8	3,932,180	10.2
1999	4,397,881	9.9	6,540,324	9.5
2000	5,757,355	9.9	7,601,110	10.0
2001	6,141,217	11.9	6,357,561	9.9
2002	6,355,916	8.9	3,097,945	16.8
2003	3,615,078	14.9	7,932,743	9.4
2004	2,094,799	15.1	4,464,468	16.4
2005	5,850,339	20.2	4,998,292	17.5
2006	4,220,526	13.6	4,863,989	14.0
2007	4,960,343	16.8	2,826,801	17.2
2008	3,242,714	16.8	728,761	30.4
2009	3,784,128	14.3	805,674	17.5
2010	3,291,521	12.5	828,571	17.5
2011	3,538,922	14.2	811,673	22.4
2012	2,559,382	14.2	1,579,260	21.3
2013	1,562,755	14.5	1,441,122	16.6
2014	1,329,353	13.9	873,536	20.4

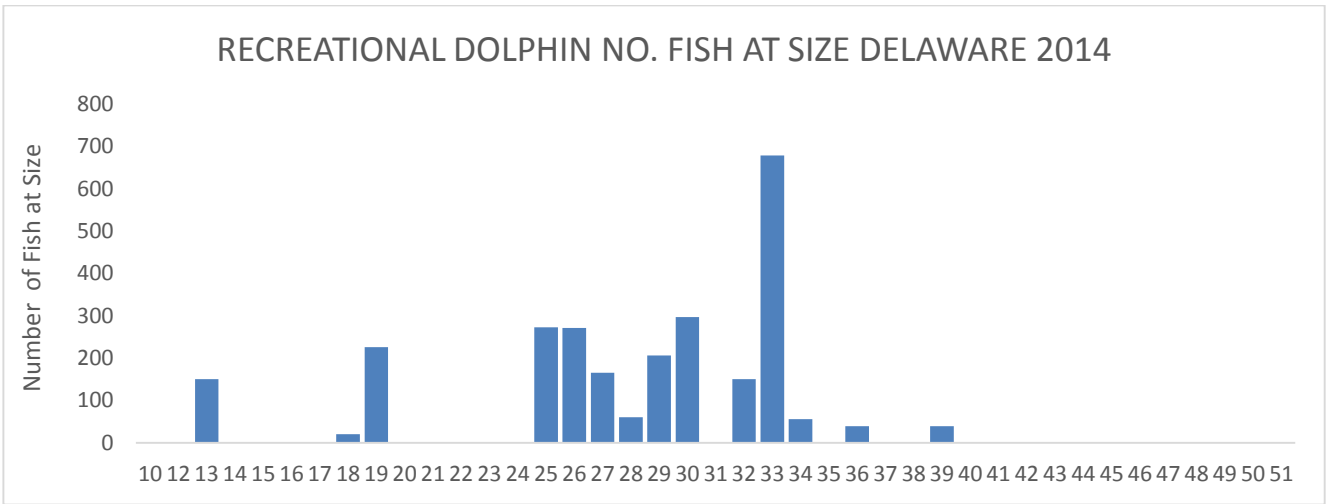


**Figure 26. North Carolina recreational yellowfin tuna landings along with dolphin landings (lbs), 1989-2014.**

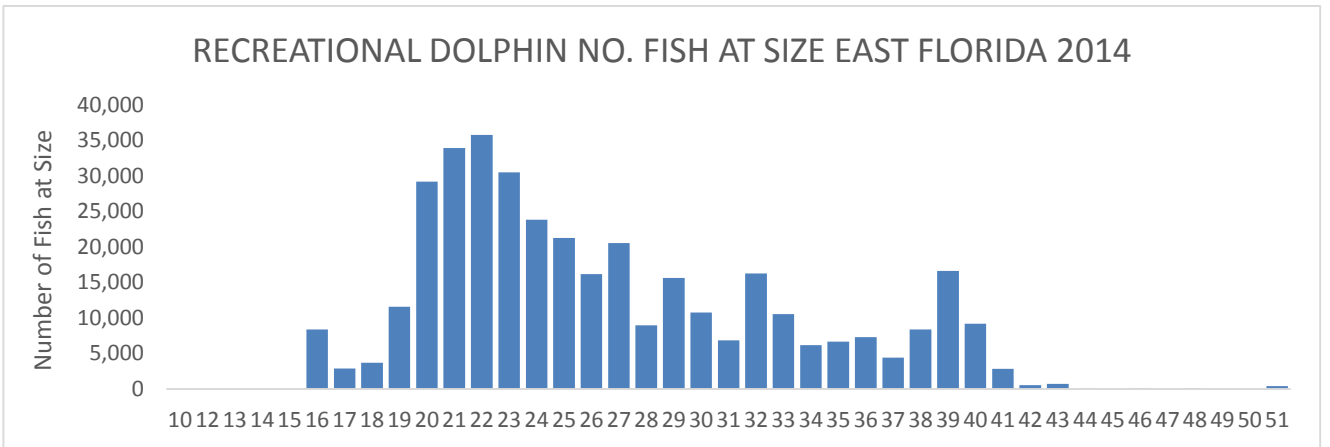




**Figure 27. North Carolina Number of Dolphin Caught at Size by Mode, 2014.**



**Figure 28. Delaware Number of Fish Caught at Size, 2014.**



**Figure 29. East Florida Number of Fish Caught at Size, 2014.**

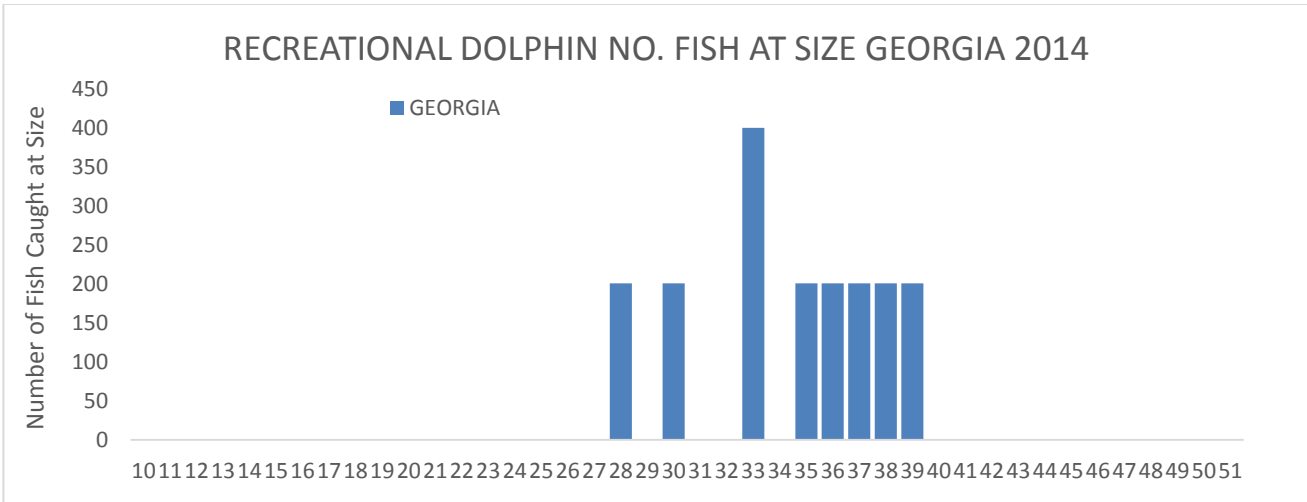


Figure 30. Georgia Number of Fish Caught at Size, 2014.

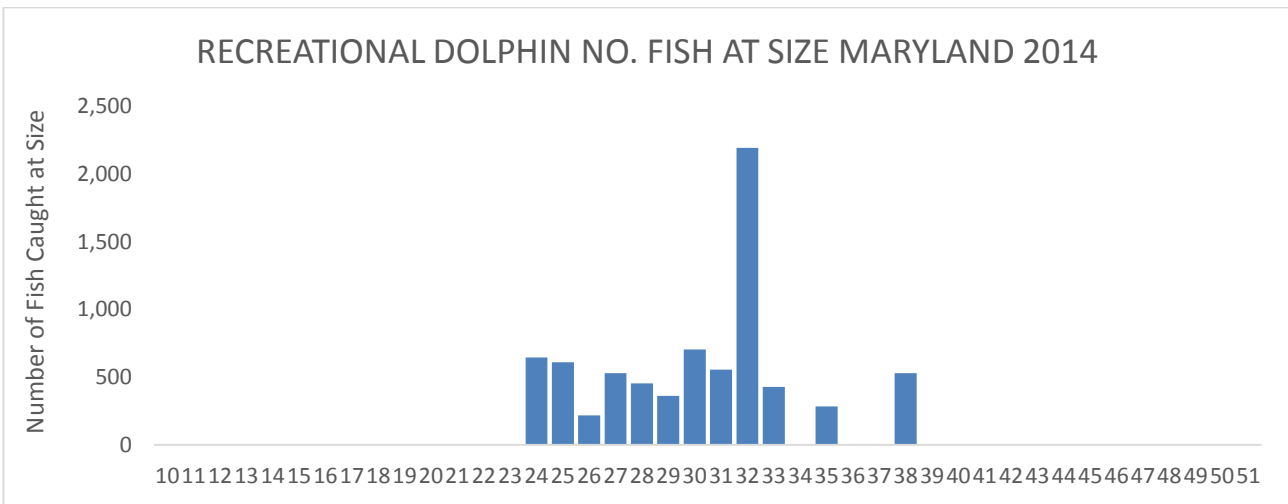


Figure 31. Maryland Number of Fish Caught at Size, 2014.

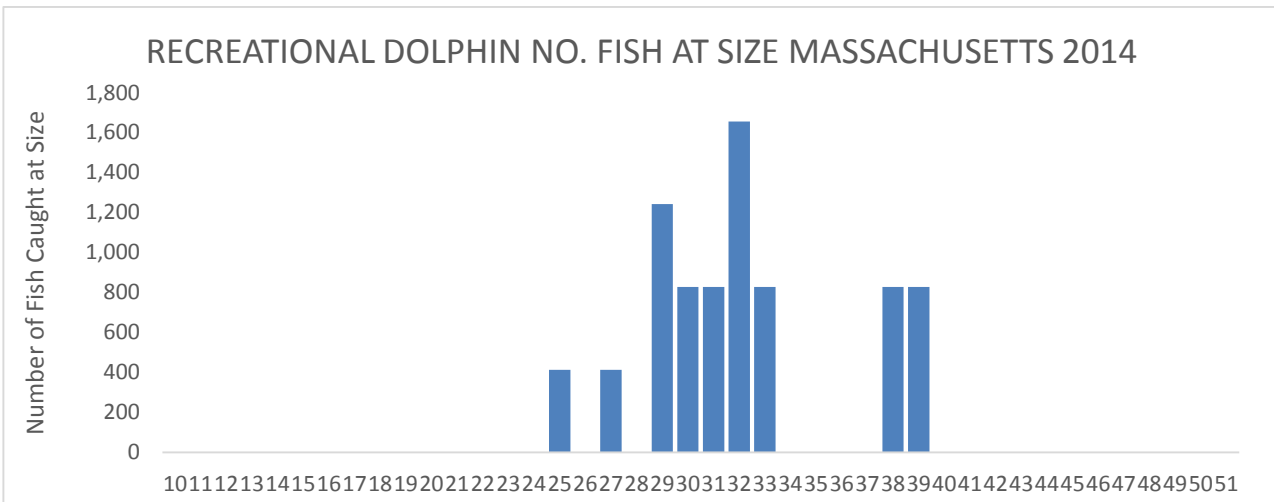


Figure 32. Massachusetts Number of Fish Caught at Size, 2014.

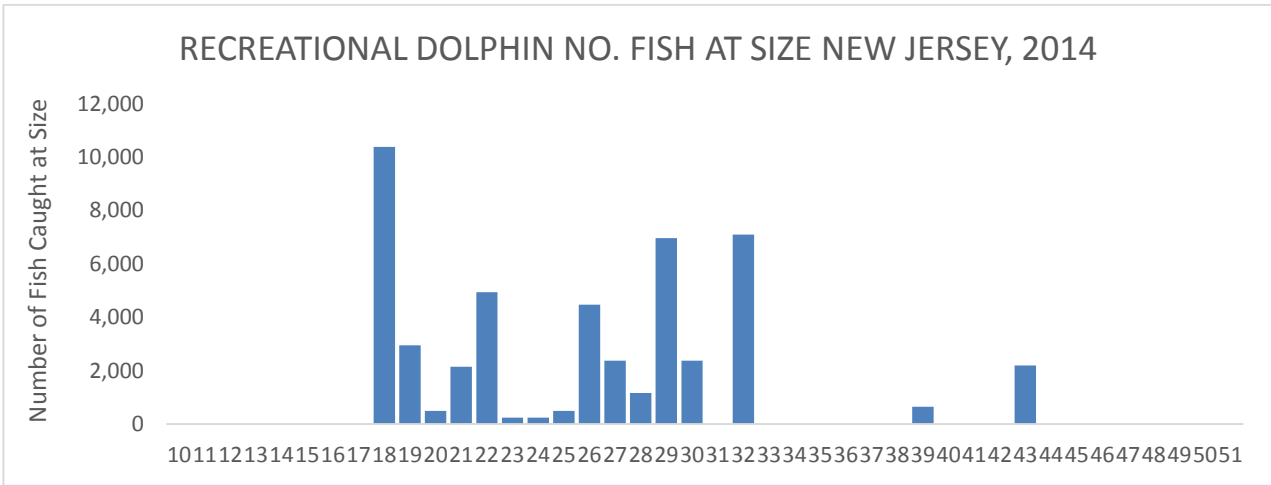


Figure 33. New Jersey Number of Fish Caught at Size, 2014

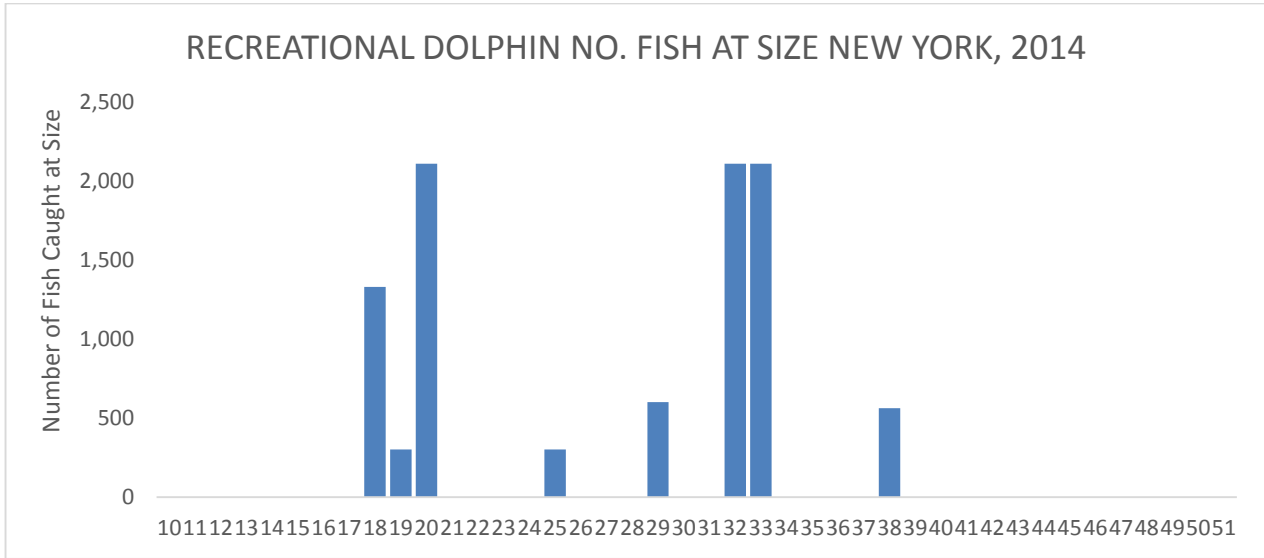
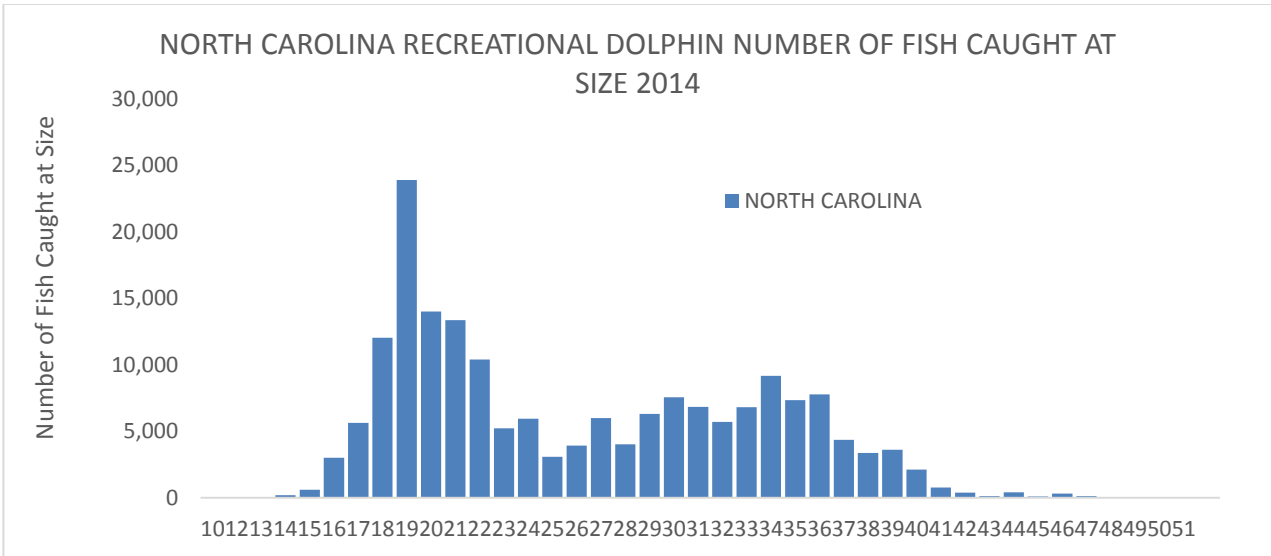
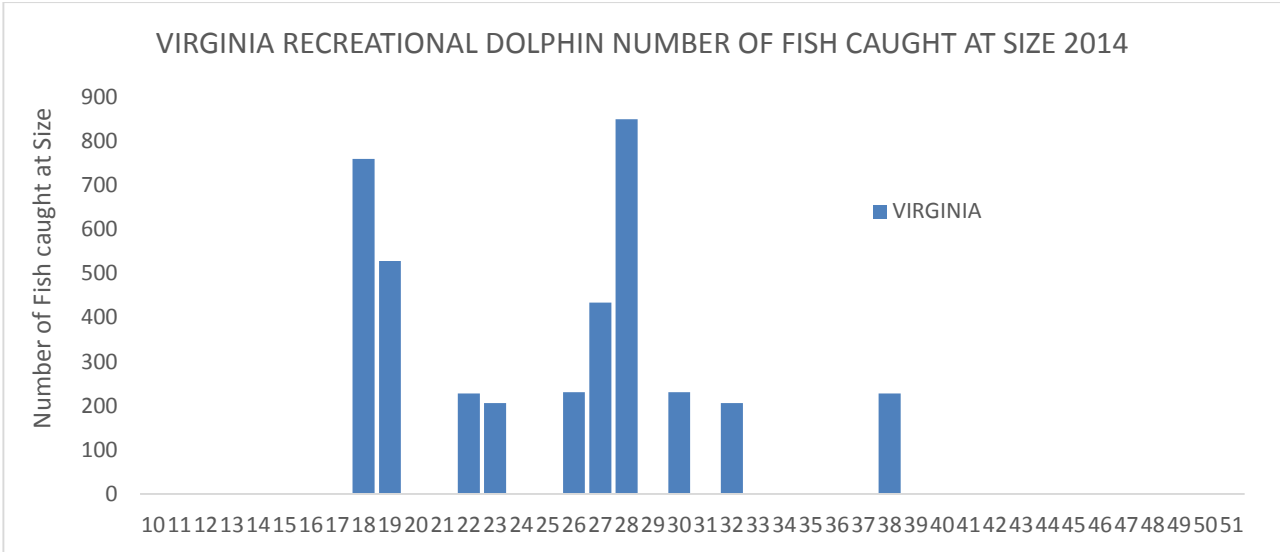


Figure 34. New York Number of Fish Caught at Size, 2014.

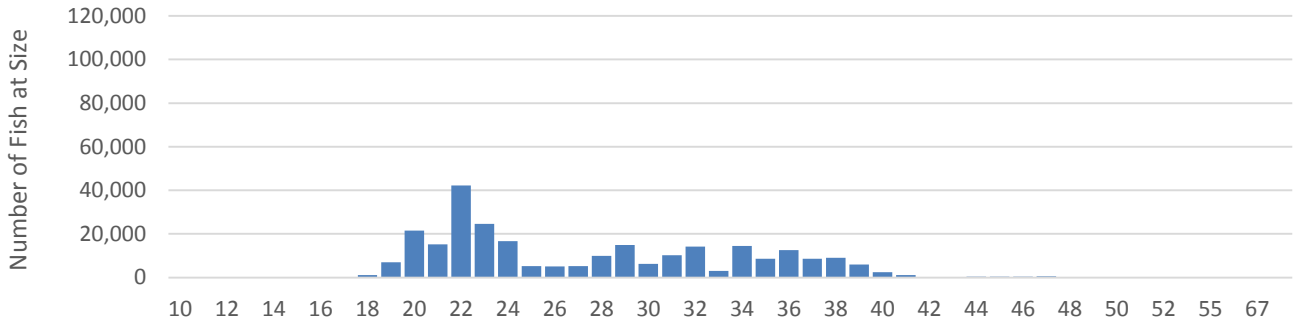


**Figure 35. North Carolina Number of Fish Caught at Size, 2014.**

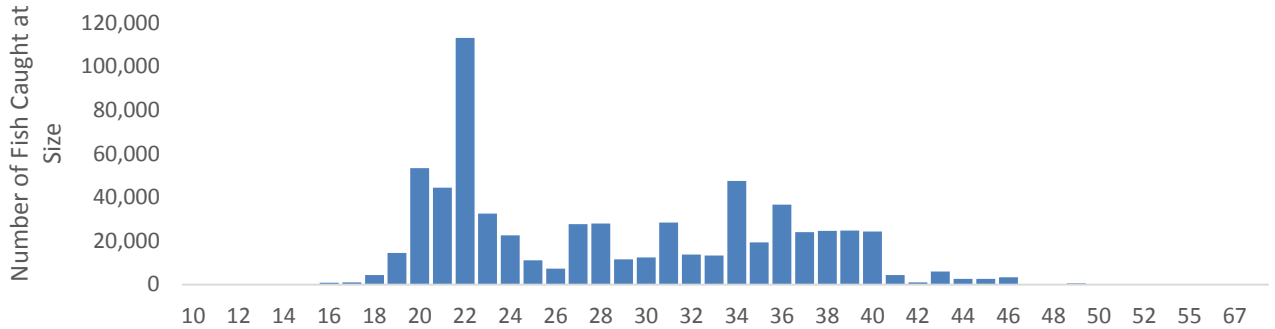


**Figure 36. Virginia Number of Fish Caught at Size, 2014.**

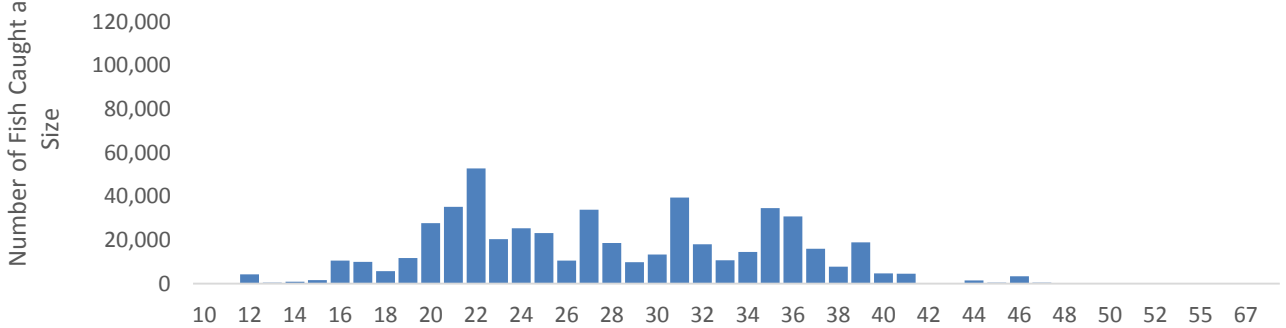
### NC 2004 Number of Fish Caught at Size



### NC 2005 Number of Fish Caught at Size



### NC 2006 Number of Fish Caught at Size



### NC 2007 Number of Fish Caught at Size

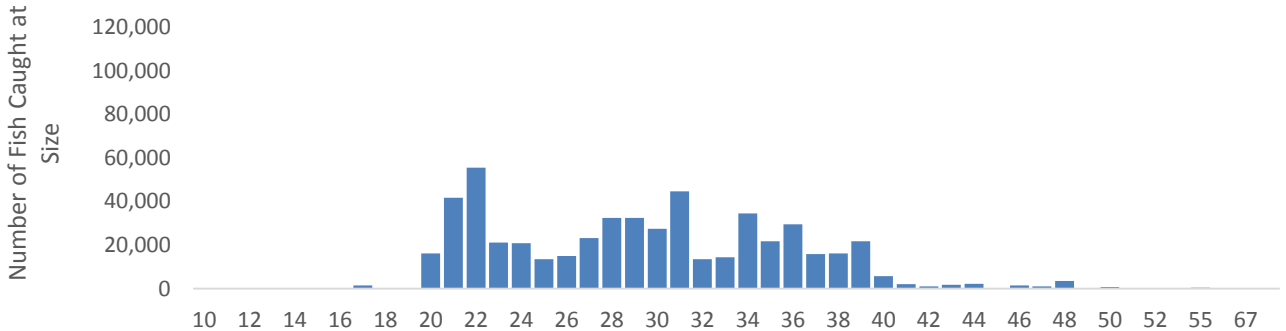
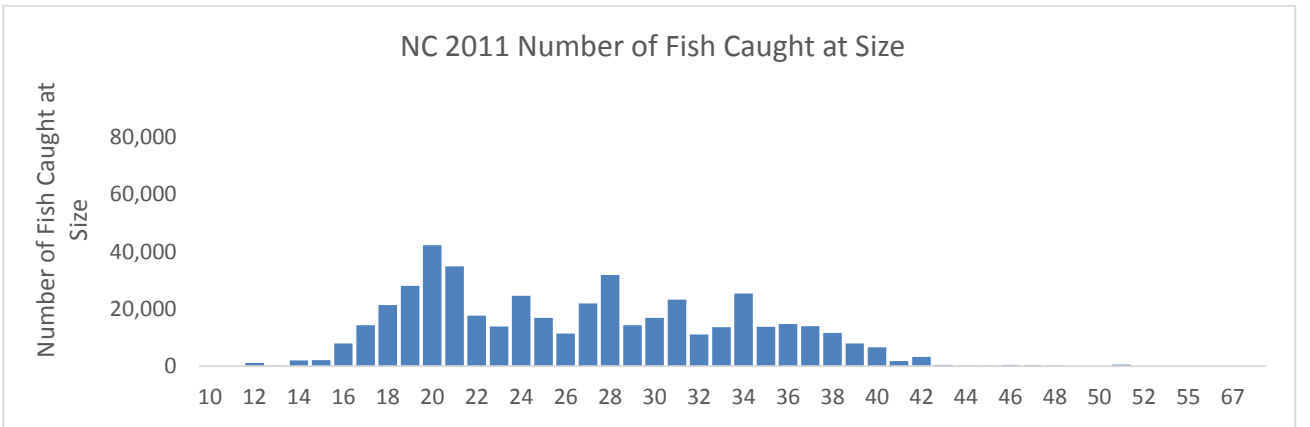
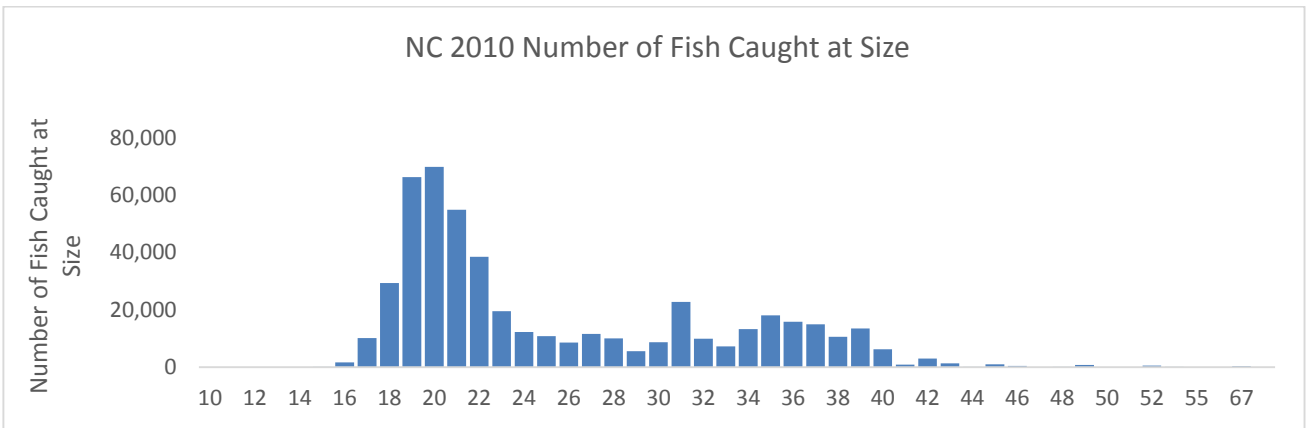
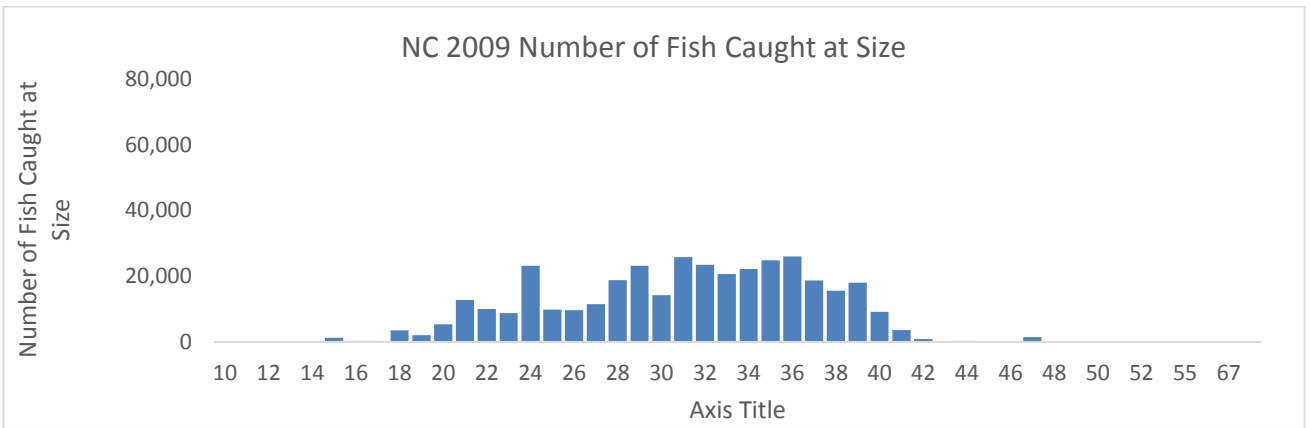
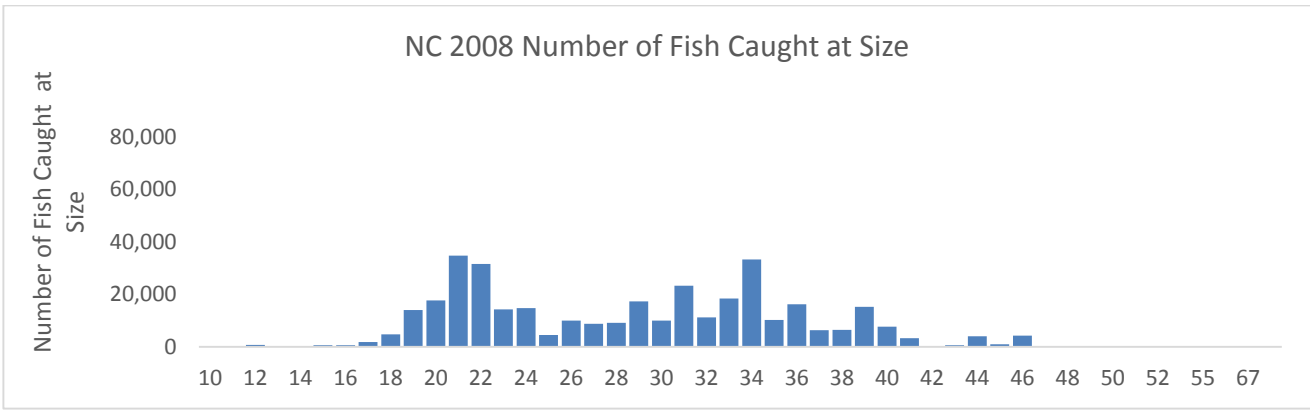
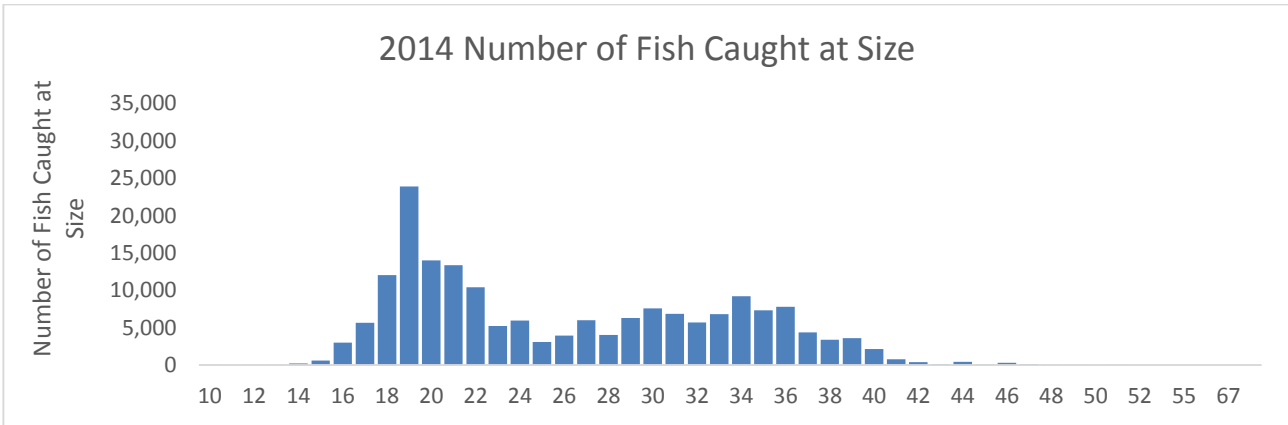
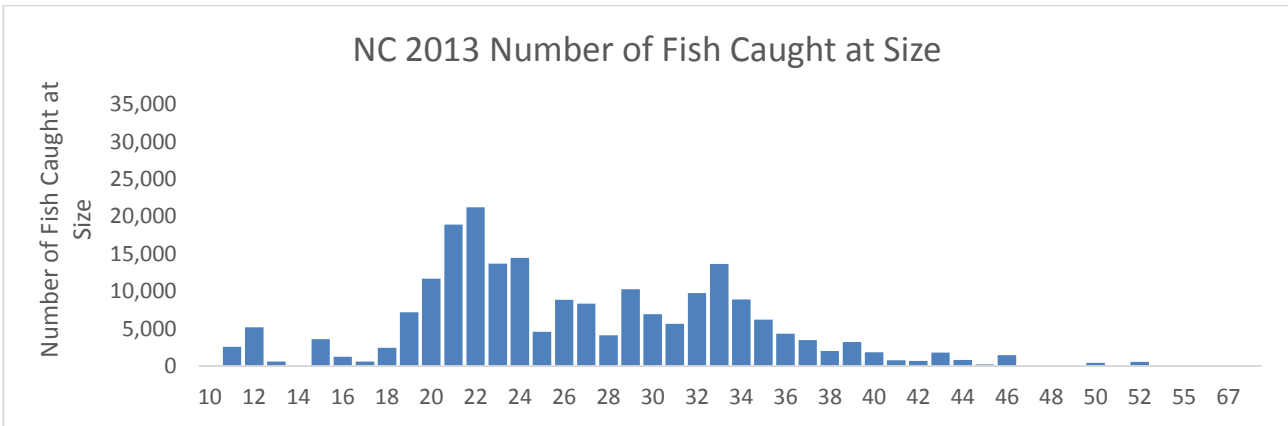
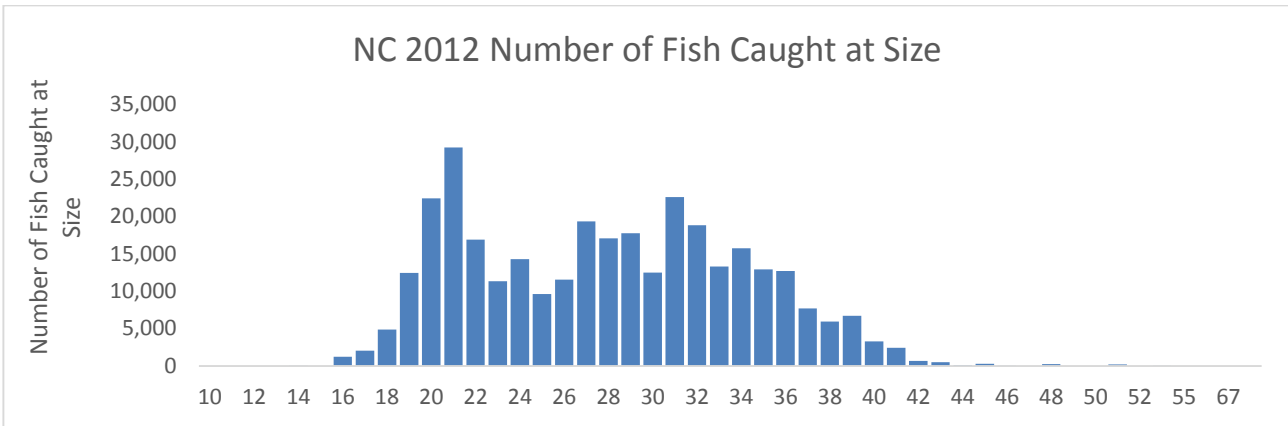


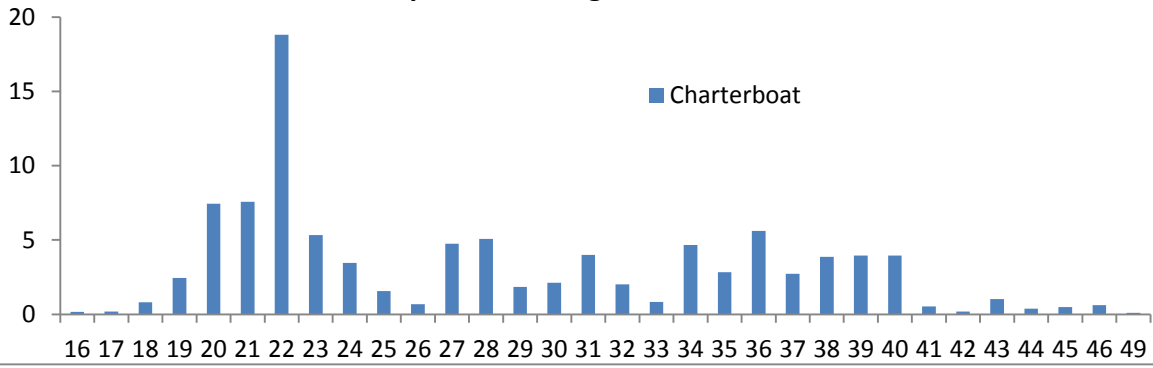
Figure 37. Number of dolphin caught in North Carolina at size (inches), 2004-2007.



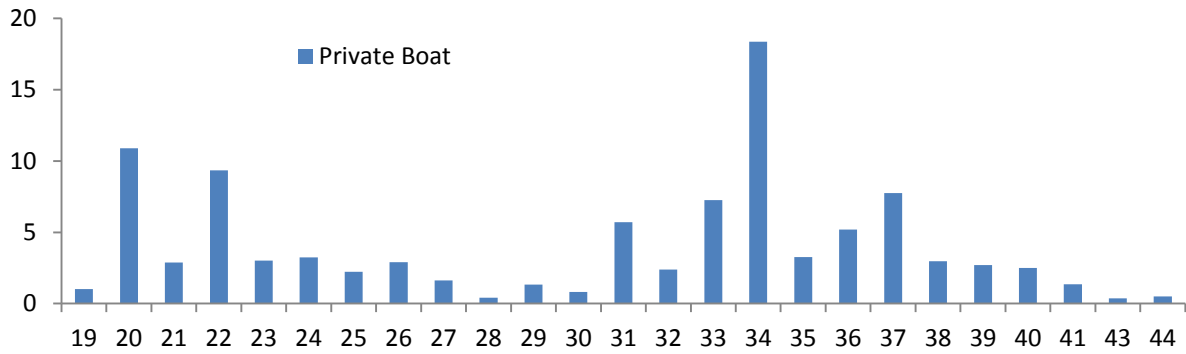
**Figure 38. Number of dolphin caught in North Carolina at size (inches), 2008-2011.**



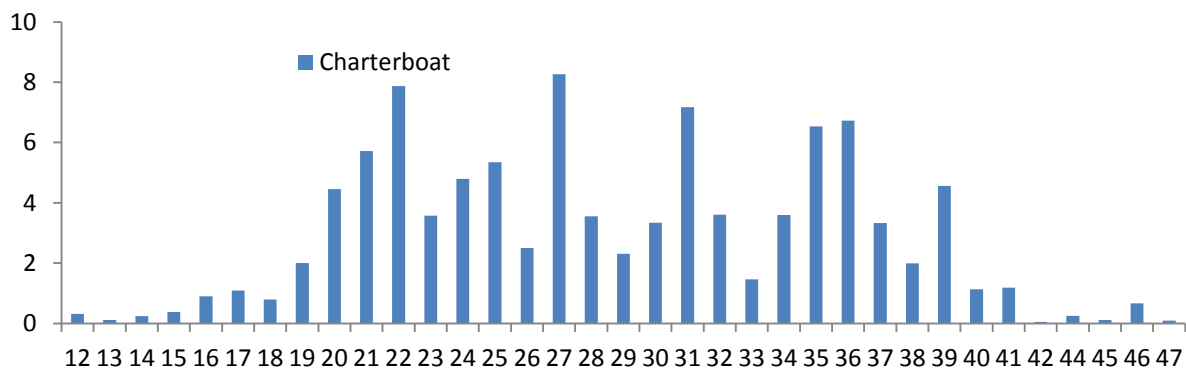
**Dolphin Fork Length Charterboat 2005**



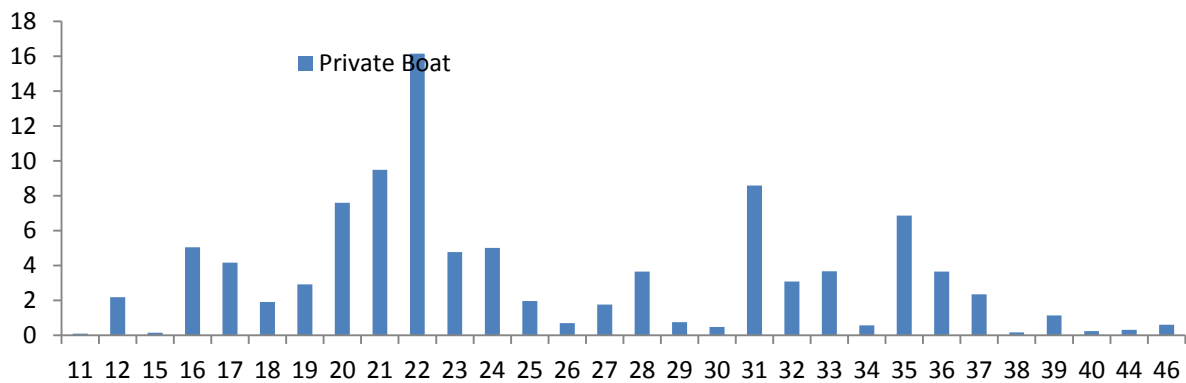
**Dolphin Fork Length Private Boat 2005**



**Dolphin Fork Length Charter Boat 2006**

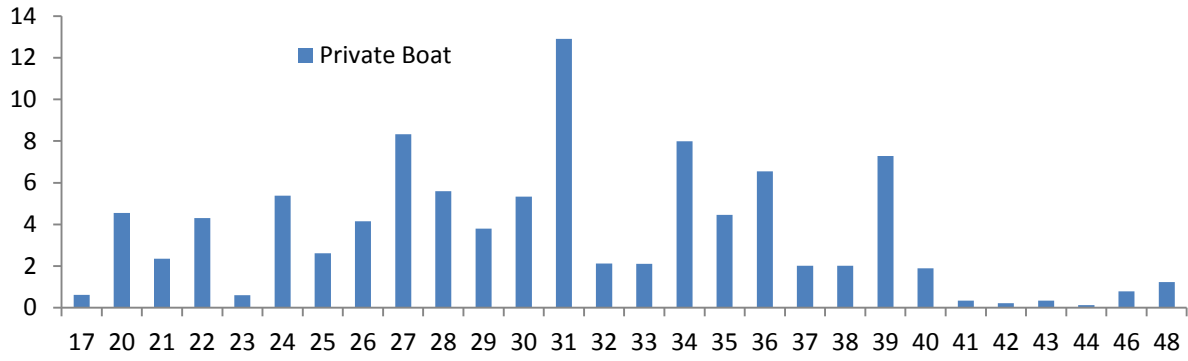


**Dolphin Fork Length Private Boat 2006**

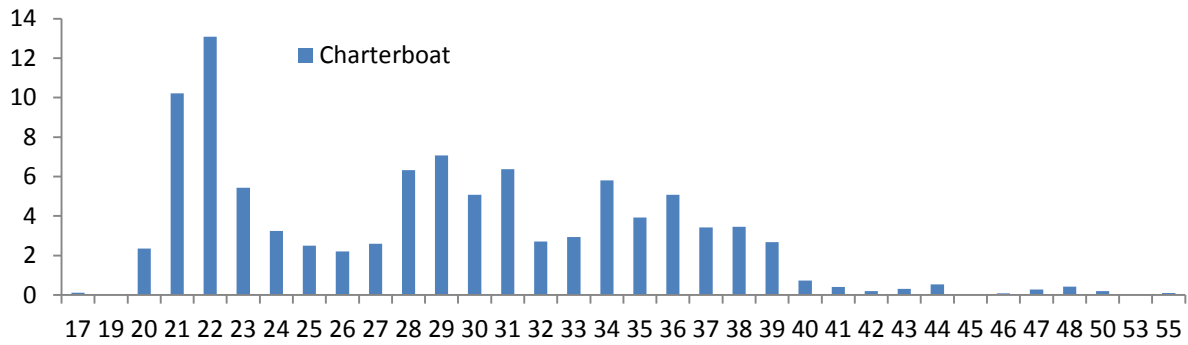




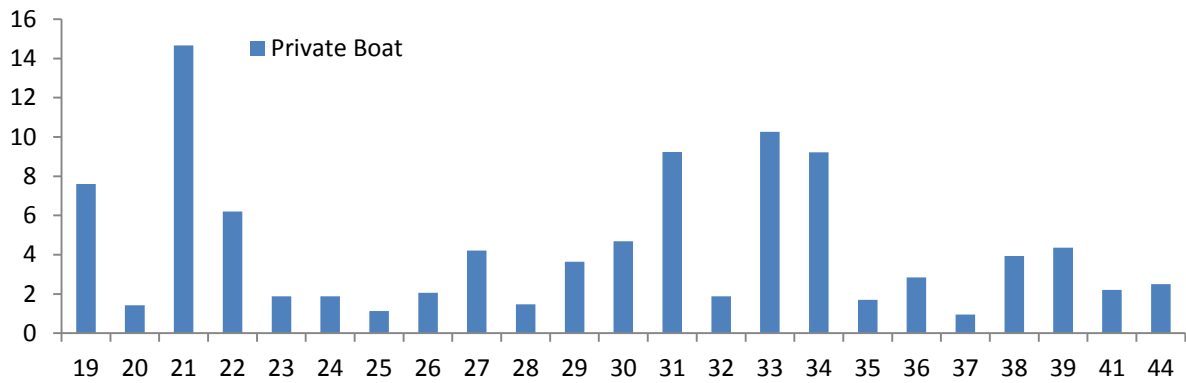
**NC Dolphin Fork Length Private Boat 2007**



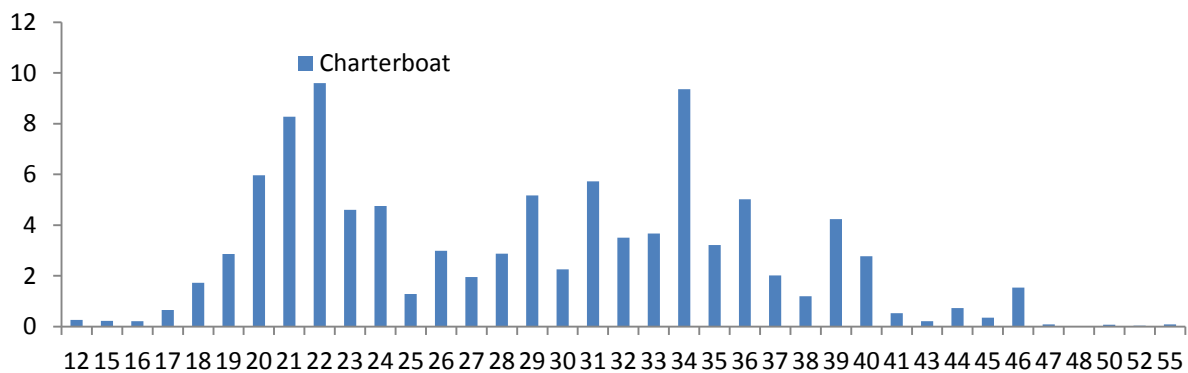
**NC Dolphin Fork Length Charter Boat 2007**



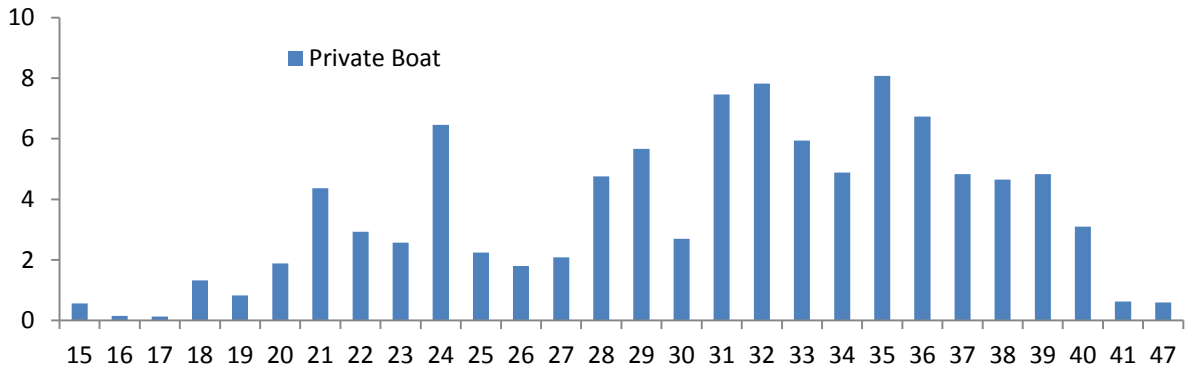
**NC Dolphin Fork Length Private Boat 2008**



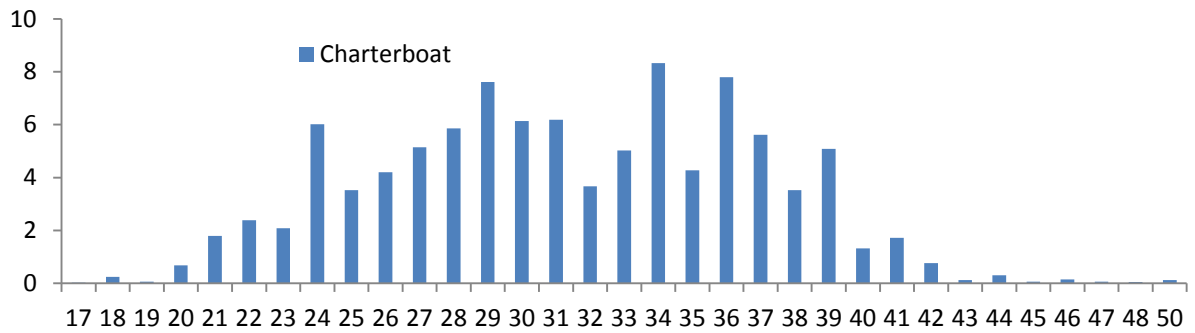
**NC Dolphin Fork Length Charter Boat 2008**



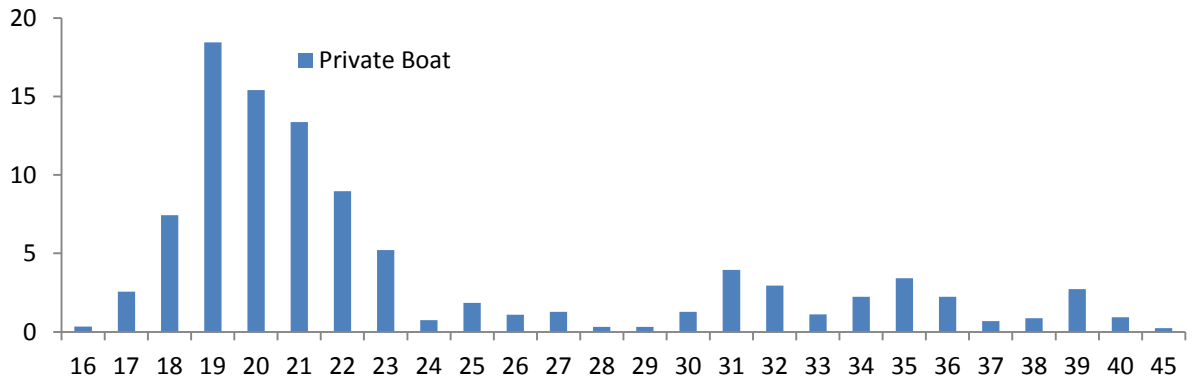
**NC Dolphin Fork Length Private Boat 2009**



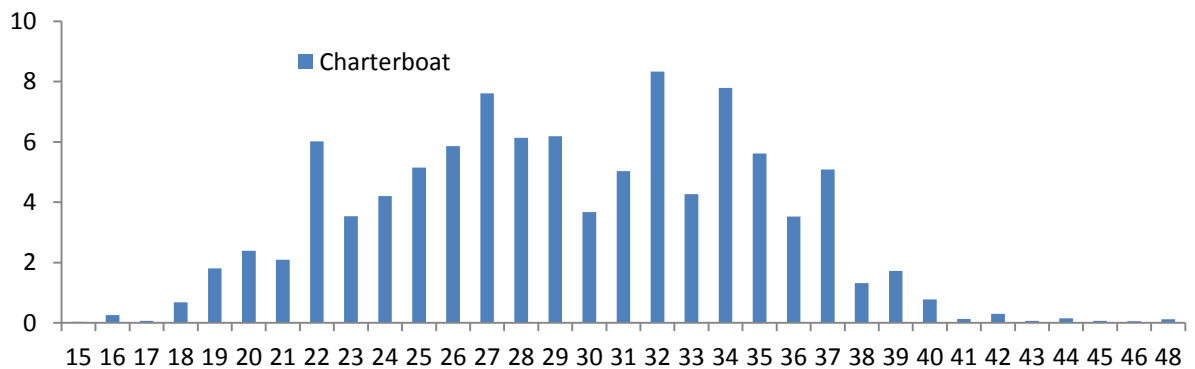
**NC Dolphin Fork Length Charter Boat 2009**



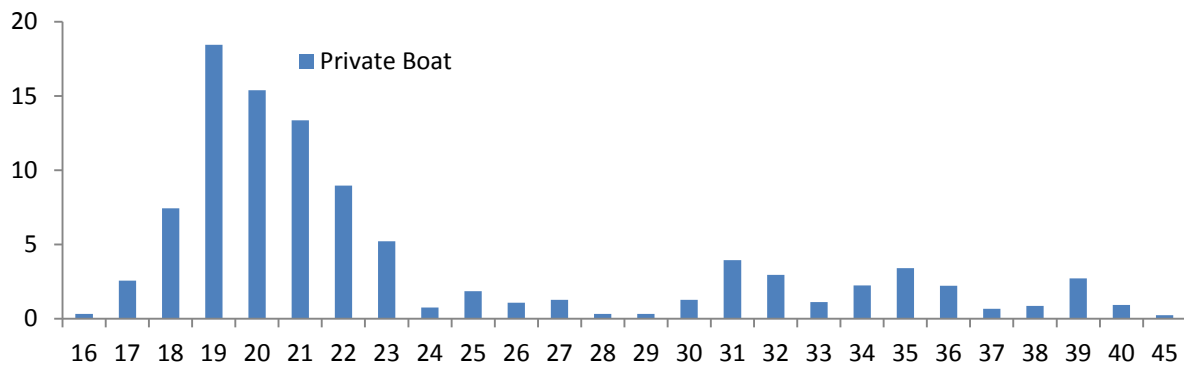
**NC Dolphin Fork Length Private Boat 2010**



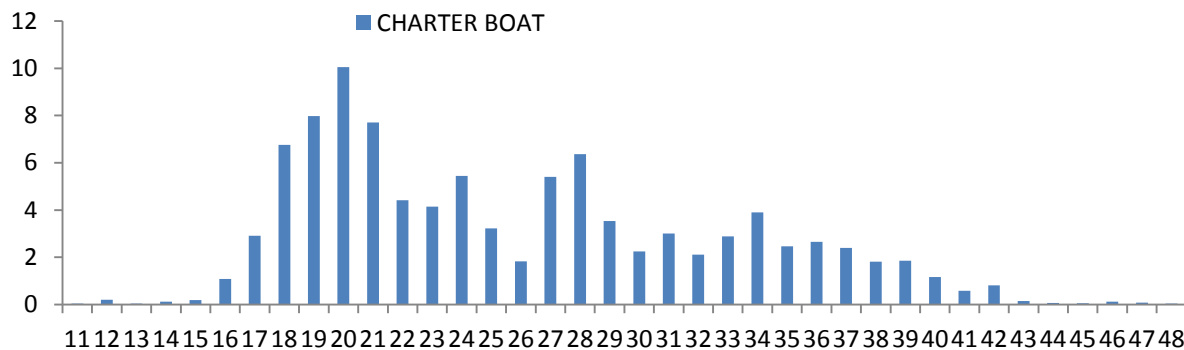
**NC Dolphin Fork Length Charter Boat 2010**



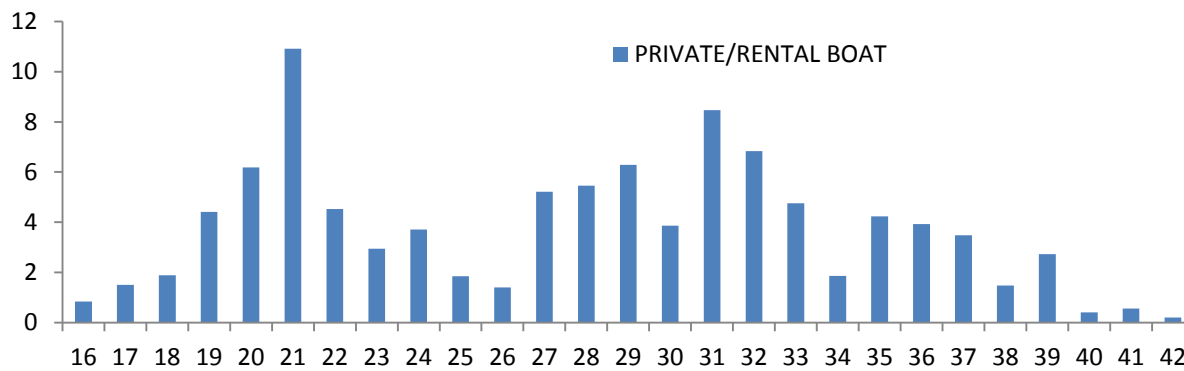
**NC Dolphin Fork Length Private Boat 2011**



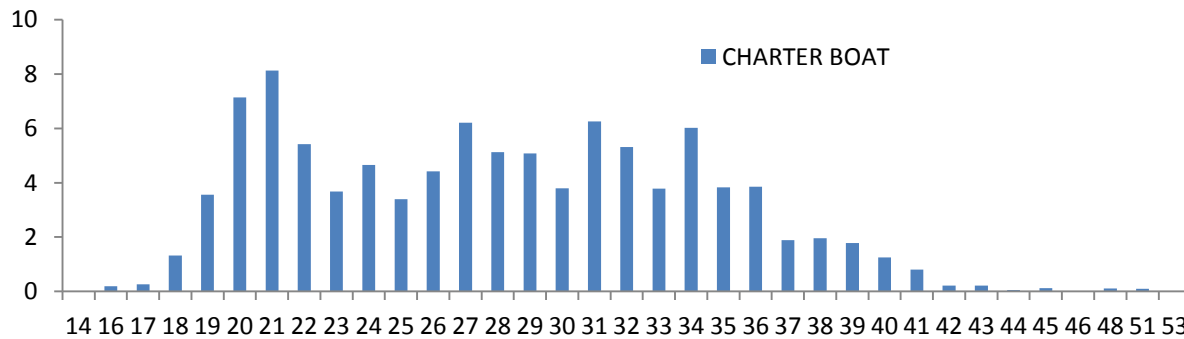
**NC Dolphin Fork Length Charter Boat 2011**



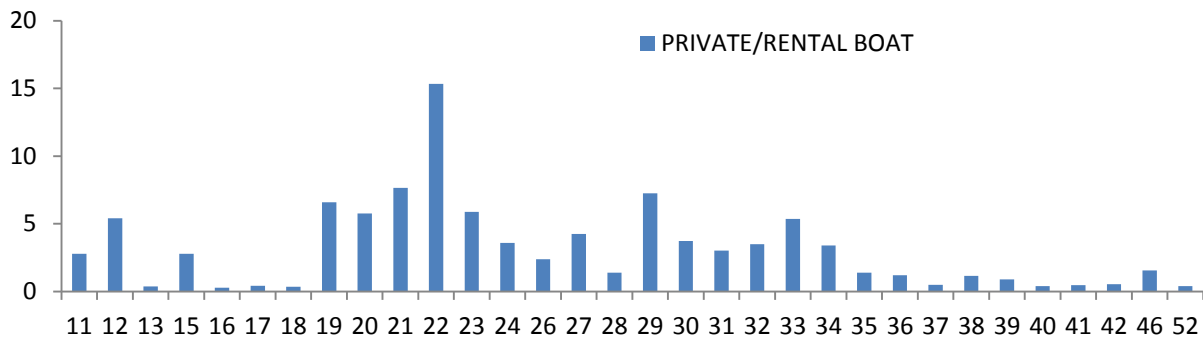
**NC Dolphin Fork Length Private Boat 2012**



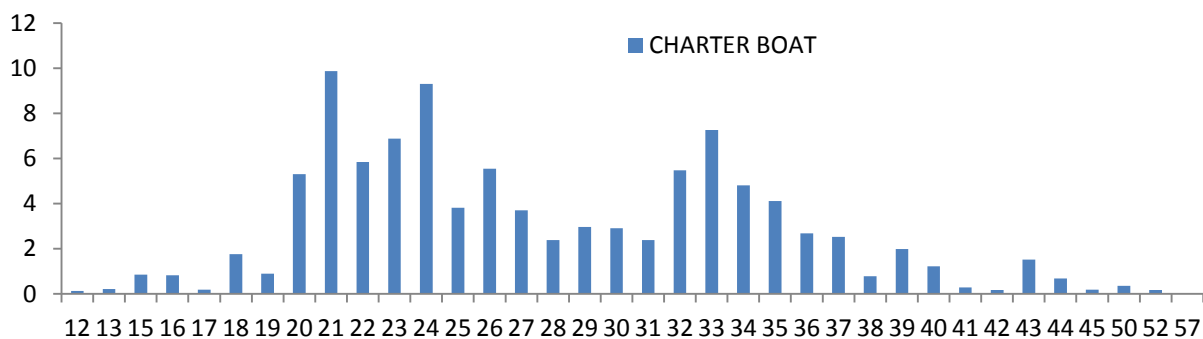
**NC Dolphin Fork Length Charter Boat 2012**



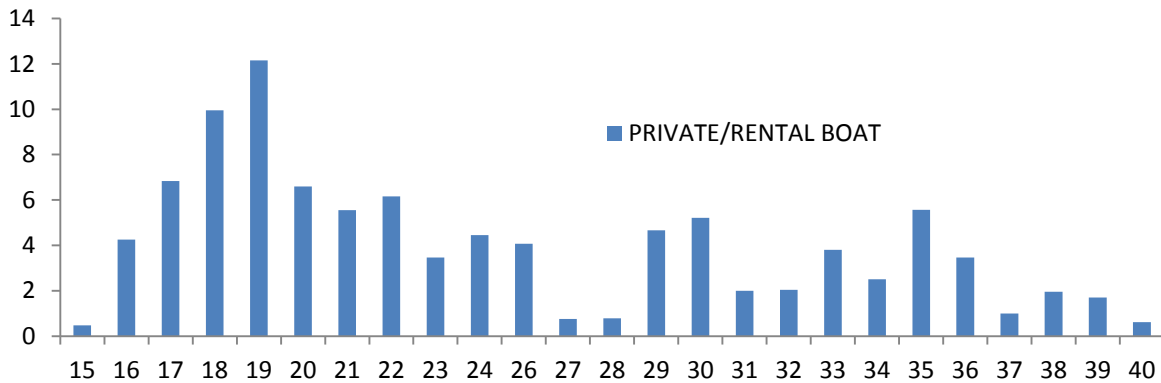
**NC Dolphin Fork Length Private Boat 2013**



**NC Dolphin Fork Length Charter Boat 2013**



**NC Dolphin Fork Length Private Boat 2014**



**NC Dolphin Fork Length Charterboat 2014**

