



**NOAA
FISHERIES**



Enforcement Updates

South Atlantic Fishery Management Council Meeting
December 9, 2025. Compliance Liaison Matt Walia

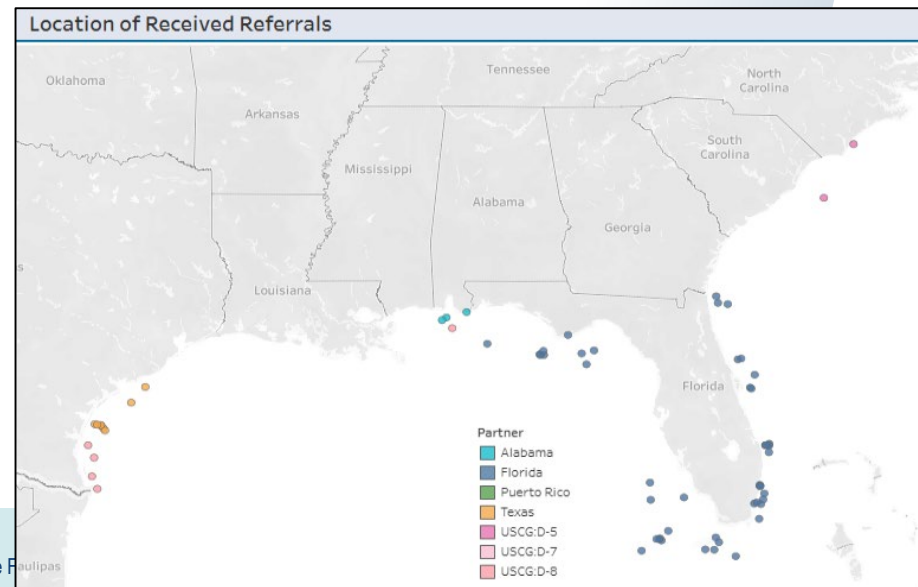
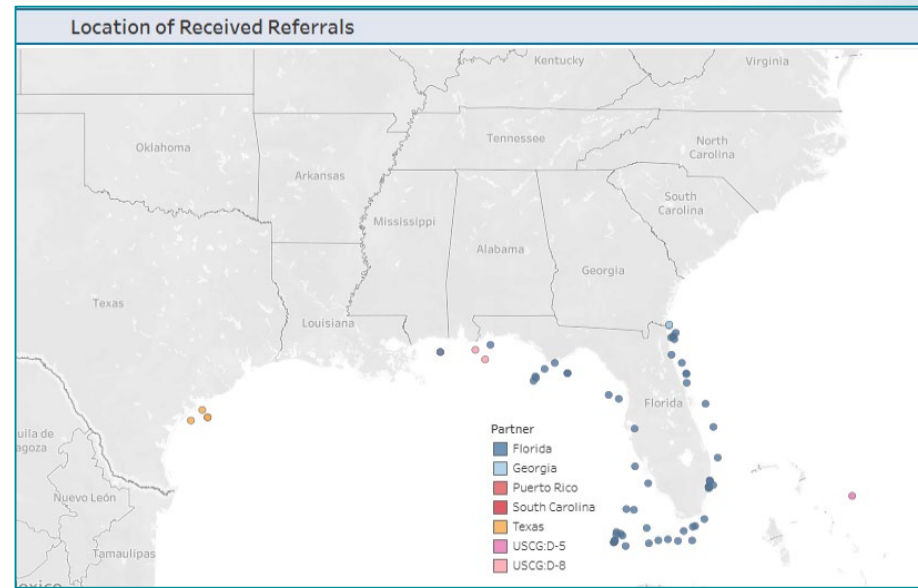


Enforcement Partnerships & Referrals

SAFMC Enforcement Partners

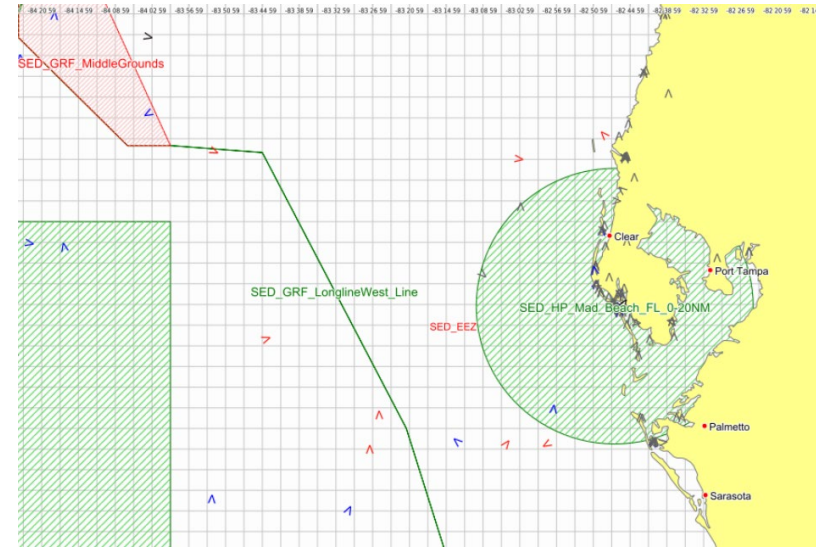


- **167 Overall Enforcement Referrals (QTRs 3- 4)**
 - Encompasses entire SED
 - Within SAFMC Partners:
 - FWC (128), GADNR (3), SCDNR (1), USCG (5)





Enforcement of Regulations



Monitoring



At-Sea Boarding



Dockside

Effective Regulations Should Be:
 ➤ **Simple, Compatible, Accountable**



NOAA
FISHERIES

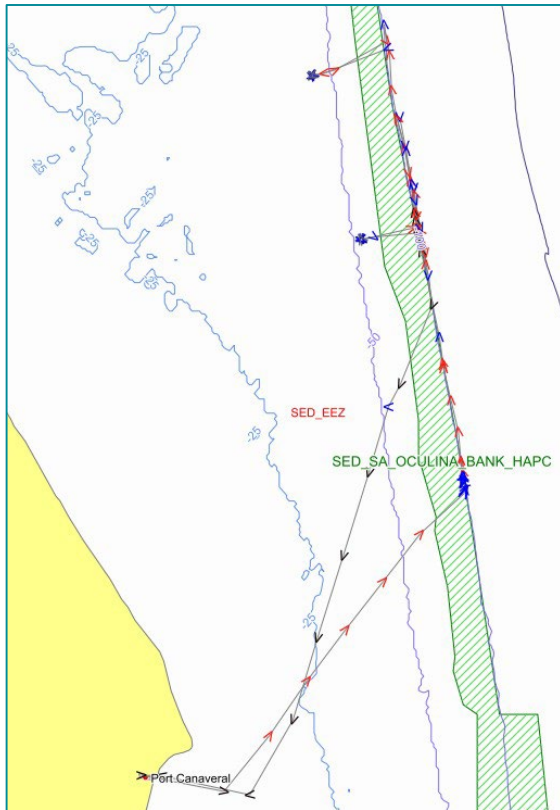


Enforcement Tools

➤ Notification

➤ Identification

➤ Verification



NOAA
FISHERIES



RECENT CASES

FALSE STATEMENTS-Criminal

- Trip Reports/Ignored quotas
- Lied to LEO, 3 day trial/3 felony convictions
- Sentenced to more than 1 year in jail, parole and \$7500 in fines



Trip Limit Exceeded

- Unaccounted Fish (undersized) exceeded 1,000lb trip limit
- Multiple Gear Violations
- 104 undersize vermillion snapper, gray triggerfish, cobia



NOAA
FISHERIES



RECENT CASES

PROTECTED AREAS/SANCTUARY

- Mini-Season Efforts
- Areas To Be Avoided



- Illegal casita joint operations
 - Probation/prohibited from commercial fishing/remove casitas
 - Probation/forfeit vessel/remove casitas

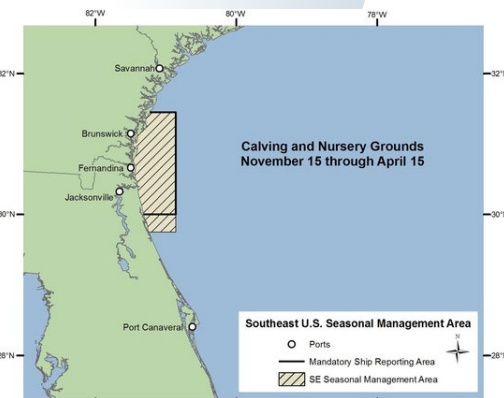
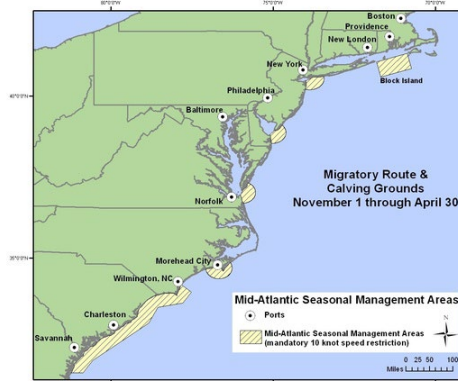
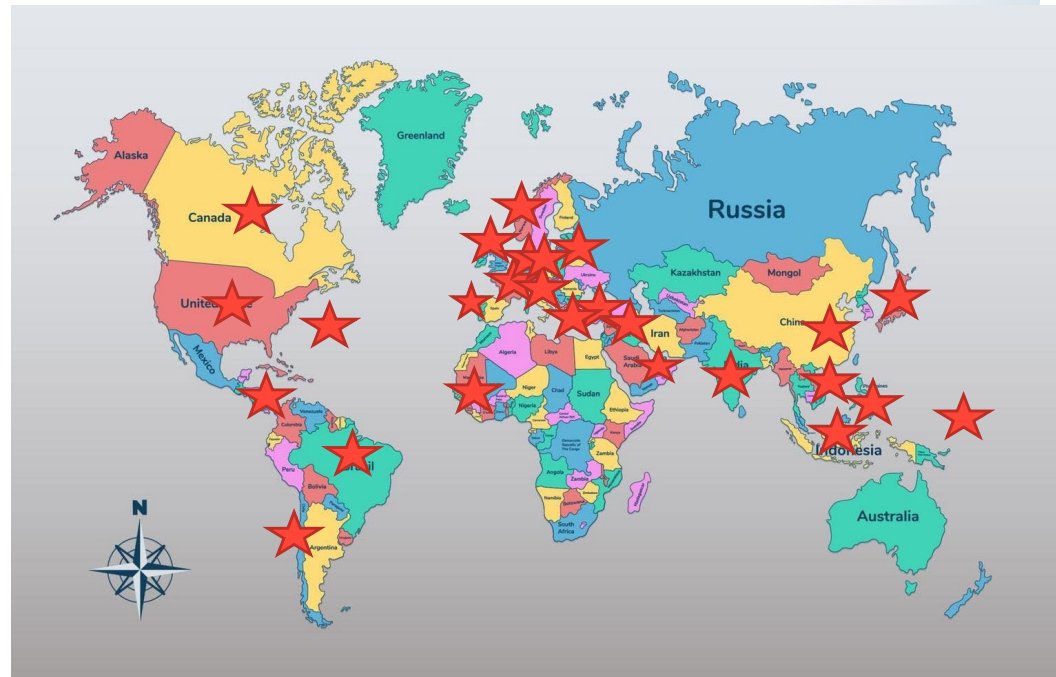




Enforcement Reminders

Northern Right Whales

- November-April
- Speed Restrictions
- 500 Compliance Letters Sent

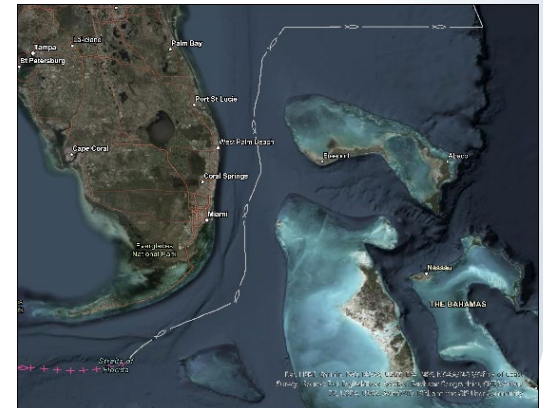


NOAA
FISHERIES



ENFORCEMENT REMINDERS

- Commercial GoldenTilefish
 - Closed **October 17-January 15**
- Bahamas Fishing
 - Declare in w/Bahamians
 - Single day vessel/per person bag limits
 - Transit on return-no stops
 - Skin on fillets



51% Compliance among South Atlantic Incidents



**NOAA
FISHERIES**



Report A Violation

NOAA's Law Enforcement Hotline,
available 24/7 at
(800) 853-1964

- Location, time, and date of the activity.
 - Description of the activity.
- Name(s) of the vessel, owner/operator, captain, crew, or additional witnesses.



NOAA
FISHERIES

QUESTIONS



NOAA
FISHERIES