



NOAA
FISHERIES

Office of Law
Enforcement
Southeast
Division

Oculina Evaluation Plan Enforcement Update

2007 – 2013

Special Agent Richard Chesler, MS
Port Orange, FL Field Office

November 9th 2013

Enforcement Update Overview

- Review Oculina Evaluation Plan, Section 3.0 Law Enforcement Plan
- Present updated enforcement data for the period of 2007 - 2013
- Provide recommendations to the Oculina Closed Area Evaluation Team

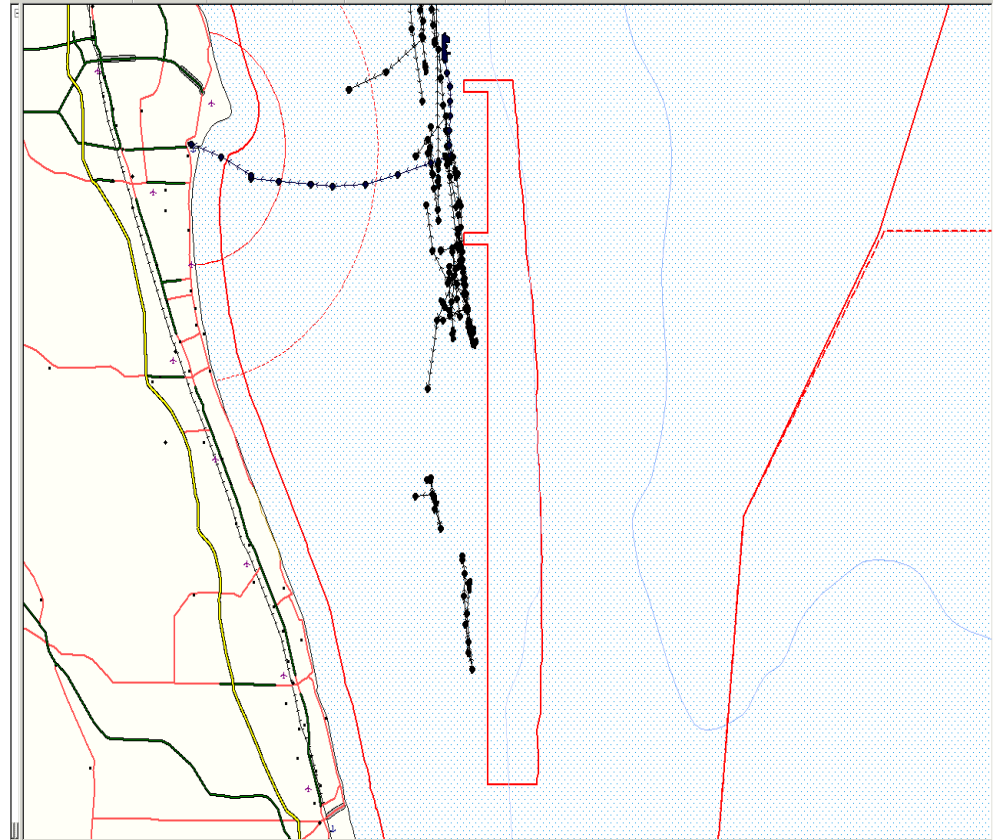


Overview: Strategy and Efforts

- Enforcement Principle 1 – Vessel Monitoring System (VMS)
- Principle 2 – Cooperative Enforcement
- Principle 3 – Increase Enforcement Presence
- Principle 4 – Enforcement Reports
- Principle 5 – Outreach and Education

Principle 1 - VMS

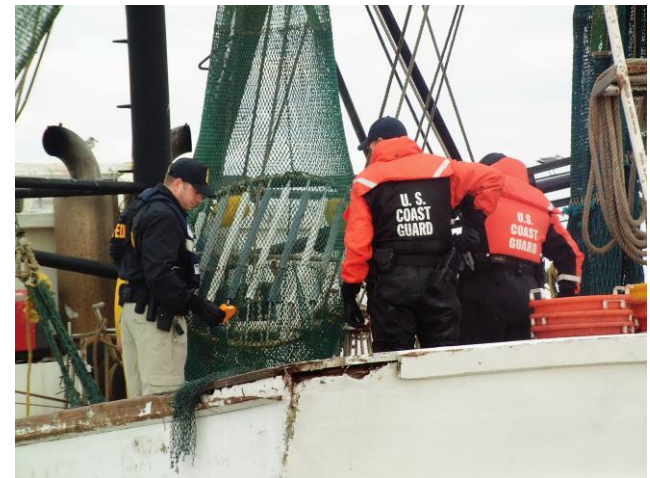
- Monitor
 - Incursions
 - Interdictions
- Intelligence
 - Increased fishing activity
- Planning
 - Patrol activities
- Investigations
 - Follow-up inspections and interviews



VMS – 08/21/06

Principle 2 – Cooperative Enforcement

- Patrol
 - USCG and FWC
- Investigations
 - NOAA OLE (OLE)
- Intelligence
 - VMS
 - Contacts
- Training

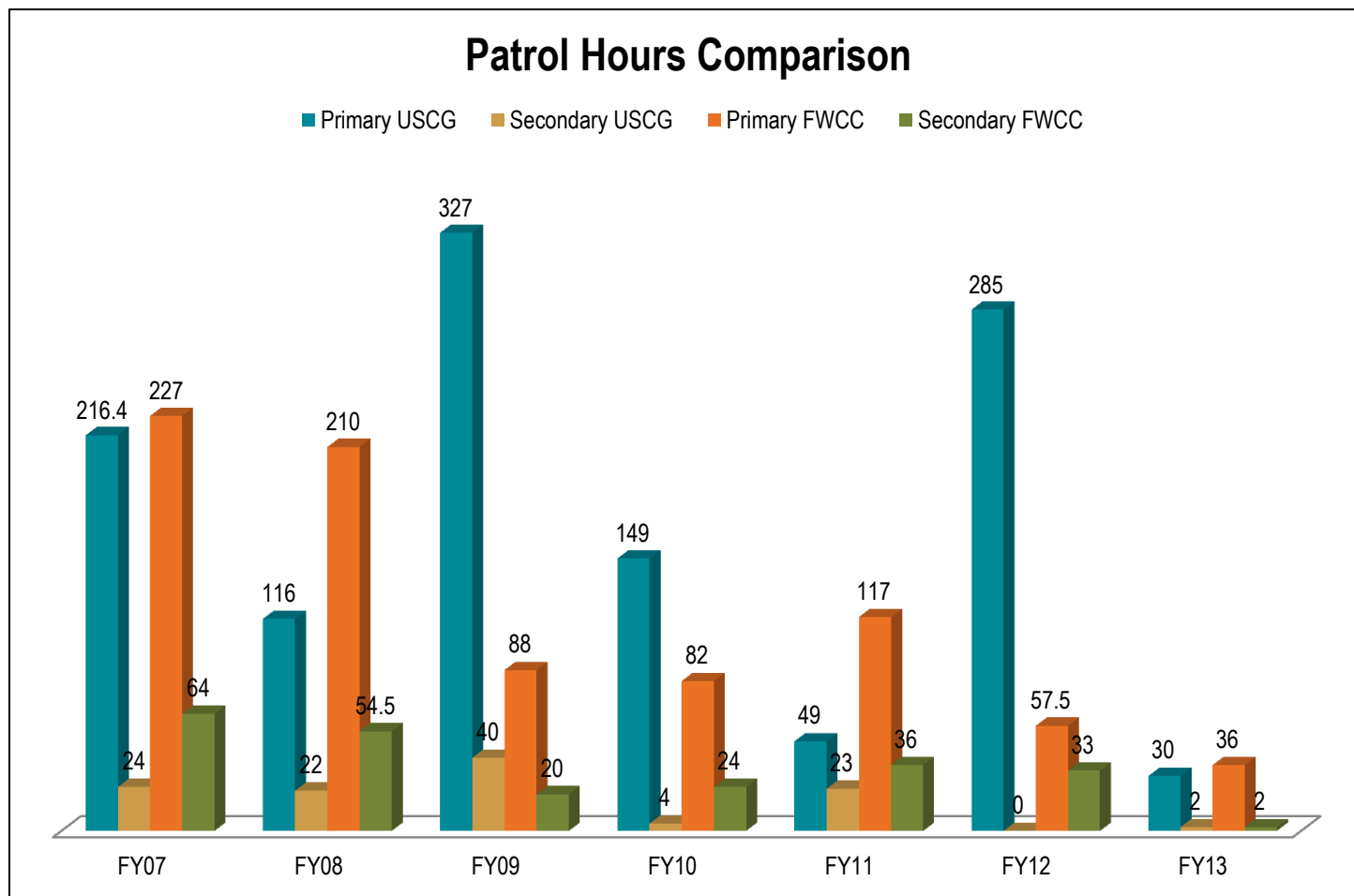


Principle 3 – Increase Enforcement Presence

- Surge operations
 - USCG, FWC, OLE
 - Cooperative enforcement utilizing each agency's assets and personnel
- Patrol activity
 - USCG and FWC
 - Vessels, boats, and aircraft



Patrol Statistics



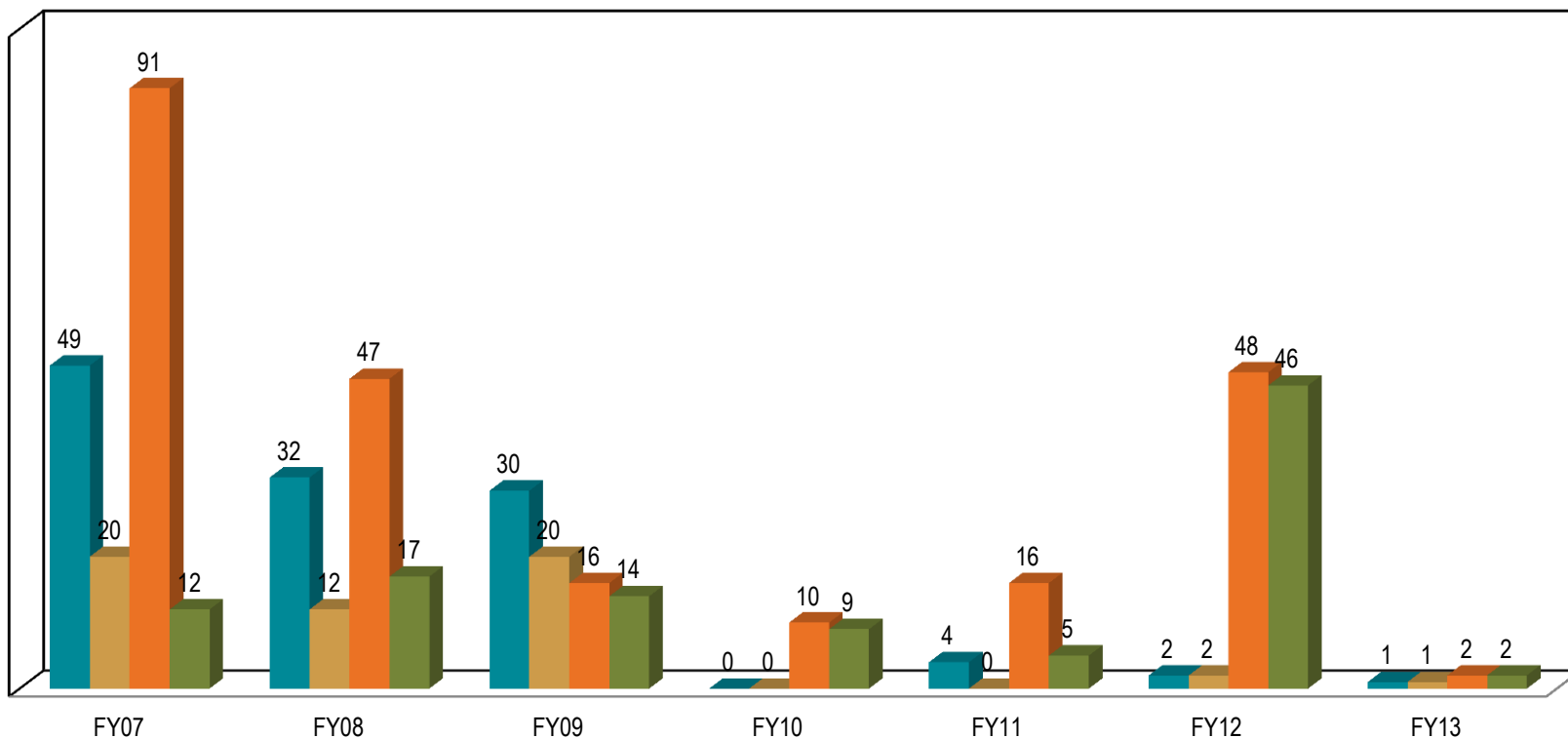
NOTES: FY07 – FY13

Secondary – USCG asset in OHAPC/ECA on other mission, FWC asset in transit to OHAPC/ECA

Detections and Boardings Statistics

OHAPC Detections and Boardings

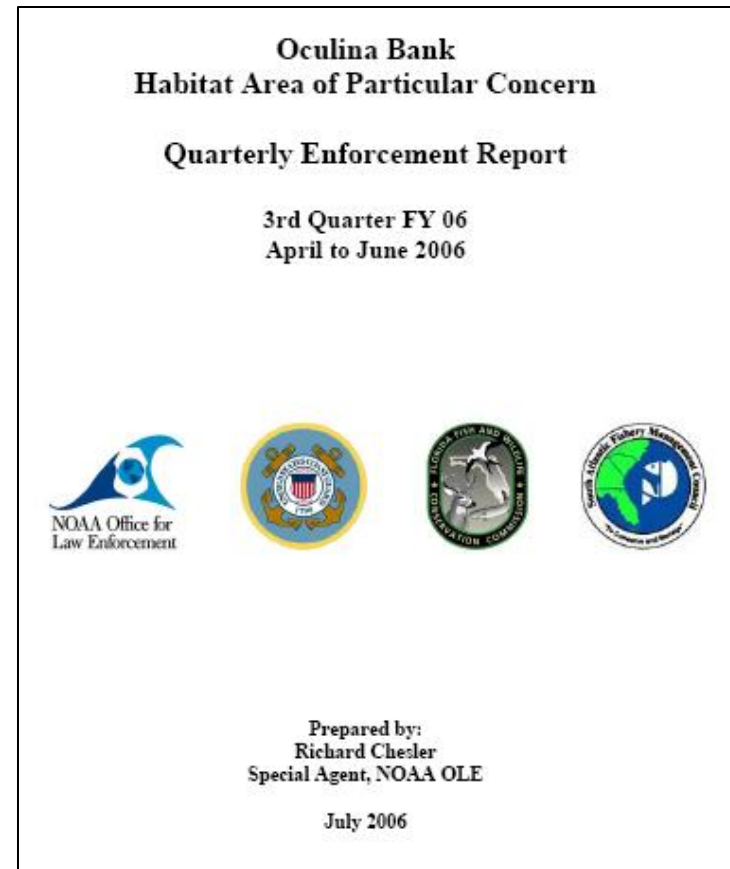
■ Comm FV Det. ■ Comm FV Board ■ Rec FV Det. ■ Rec FV Board



NOTES: FY07 – FY 13

Principle 4 – Enforcement Reports

- OLE agent collects patrol, sightings, boardings, and violations data and prepares quarterly report
- Report highlights case dispositions, media stories, outreach activities, training, and patrol activities
- Quarterly report presented to SAFMC at each meeting



Principle 5 – Outreach and Education


- Enforcement partners support outreach and education efforts
- Distribute SAFMC and Oculina regulations
 - Outreach Events
 - Fishing shows and tournament meetings
 - On patrol
 - Recreational anglers in or near OECA
 - Commercial fishermen



Outreach and Education continued

- Participate in outreach/education activities
- Issue news releases for Oculina enforcement cases and patrol activities



 **NOAA FISHERIES:**
Office for Law Enforcement

Office Home | Northeast | Southeast | Alaska | Northwest | Southwest | Pacific Islands

Department of Commerce
National Oceanic and Atmospheric Administration
NOAA Fisheries Service
- Office for Law Enforcement

FOR IMMEDIATE RELEASE
November 3, 2005

CONTACT:
Mark Oswell
(301) 427-2300

RECREATIONAL FISHERMAN FINED FOR OCULINA BANK CLOSED AREA VIOLATION

On August 20, 2005, a joint NOAA Fisheries Service - Office for Law Enforcement (OLE) and U.S. Coast Guard patrol within the Oculina Bank Experimental Closed Area netted a 25' sport fishing vessel fishing within the closed area.

A Coast Guard boat from Station Fort Pierce, Fla. intercepted the vessel over a mile inside the Closed Area. Upon being boarded by an OLE agent and USCG officer, Jeffrey Johnson (owner/operator), admitted to having snapper-grouper onboard. Fishing for or possessing snapper-grouper within the closed area is prohibited.

The Port St. Lucie (FL) fisherman was subsequently assessed a \$2,500 civil penalty for possessing snapper-grouper within the Experimental Closed Area. Johnson has 60 days from the date he is notified of this penalty to: pay the penalty, seek to have the assessment modified, or request a hearing before an administrative law judge to deny or contest the charge and the penalty assessed.

Six other sport fishing vessels were checked during the patrol of the closed area, and no other violations were detected. Vessel operators were provided snapper-grouper regulations brochures as part of ongoing OLE outreach and education efforts regarding Oculina Bank regulations.



Areas for Improvement

- VMS
 - Effective
- Cooperative Enforcement
 - Improve patrol coordination between FL FWCC and USCG
 - Increase inter-agency “ride-alongs”
 - Establish semi-annual Oculina specific enforcement meeting/training

Areas for Improvement

- Increase Enforcement Presence
 - Utilize covert patrols in conjunction with overt patrols
 - Obtain LMR mission hours or patrol under secondary mission (USCG)
 - Patrol “Smarter”
 - Weather
 - Ramp/Marina checks



Areas for Improvement continued

- Reporting
 - Better recordkeeping by source agency
 - Timely submission of reports
- Outreach
 - Engagement of tournaments in Sebastian and Fort Pierce
 - Include Oculina rack card in captain's bags

Recommendations

- Adapt current law enforcement plan to Project Management format
 - Establishes resources, outputs, outcomes, constraints, risks, reporting, and accountability
- Determine enforcement burden with transit provision
 - Mitigation strategies
- Establish enforcement expectations
 - Compliance metric



Questions?

